

# THE DEFENSE MEDICAL EPIDEMIOLOGY DATABASE



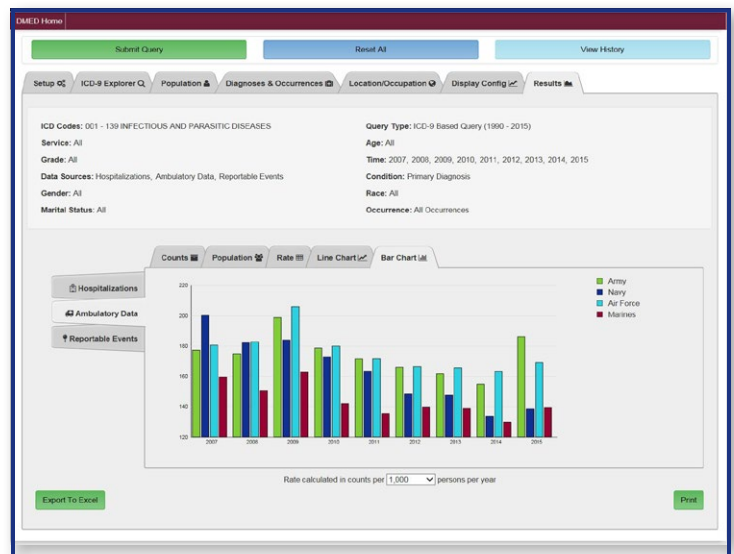
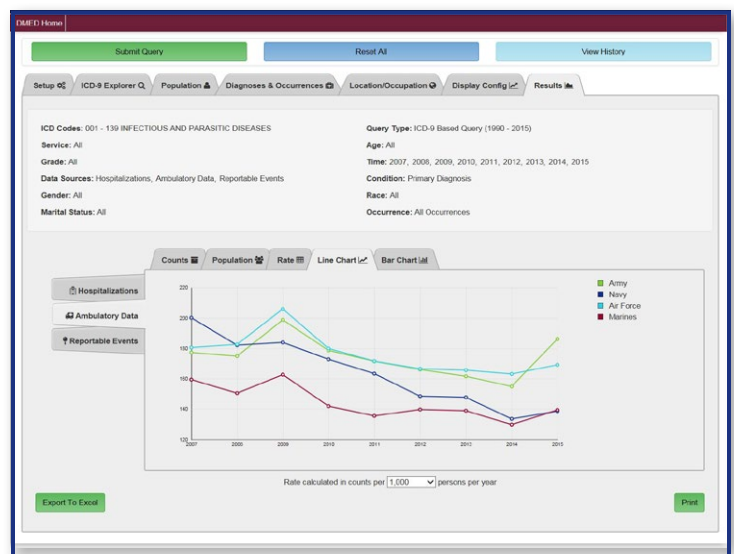
## SYSTEM OVERVIEW

### DESCRIPTION

The Armed Forces Health Surveillance Branch's (AFHSB) Defense Medical Epidemiology Database (DMED) is a web-based tool to remotely query de-identified active component personnel and medical event data contained within the Defense Medical Surveillance System (DMSS). A newly released version of the database provides unprecedented access to tri-service epidemiologic data that allows users to query large amounts of data in a timely and efficient manner. **All existing and new users will need to register to access the new version.**

### KEY FEATURES

- ▶ Provides web-based query access to active component personnel and medical event data
- ▶ Offers remote access to a subset of data contained within DMSS
- ▶ Protects privacy using only de-identified data
- ▶ Contains current data with monthly updates
- ▶ Offers enhanced user-friendly user interface
- ▶ Allows search of multiple databases simultaneously using ICD-9 and ICD-10 diagnostic codes
- ▶ Authorized Users:
  - U.S. Military Personnel (DoD-CAC users)
    - Medical providers
    - Epidemiologists
    - Medical Researchers
    - Safety Officers
    - Medical Operations and Clinical Staff
  - Federal partners and civilian collaborators in military medical research and operations



### ACCESSING THE DATABASE

DMED is accessible from the AFHSB web site at:

<http://www.afhsc.mil/dmed/>. **All existing and new users will need to register to access the new version.**

## KEY INFORMATION

### Data Sources

DMSS contains up-to-date and historical data on diseases and medical events (e.g., hospitalizations, ambulatory visits, reportable diseases, immunizations, HIV tests, etc.) and longitudinal data relevant to personnel characteristics and deployments for all active and reserve component service members. DMED provides remote access to a subset of data contained within the DMSS (only data on active component service members). The DMED application provides a user-friendly interface through which users may perform queries regarding medical health care, including disease and injury rates and relative burdens of disease, for active component service members.

DMED provides access to four types of data: demographic, hospitalization, ambulatory and reportable events data.

**DEMOGRAPHIC DATA** include service, gender, age category, race, pay grade, and marital status.

**HOSPITALIZATION DATA** include information from DoD Medical Treatment Facilities (MTFs) and outsourced (non-DoD) hospitalization healthcare provided to active component service members. For each hospitalization of an active component service member, at the time of discharge, up to eight diagnoses are recorded (using standard diagnostic codes, International Classification of Diseases (ICD) 9th and 10th revision).

**AMBULATORY DATA** include information from MTFs and outsourced (non-DoD) ambulatory healthcare provided to active component service members. A maximum of four diagnoses using ICD-9 and ICD-10 codes are recorded for each ambulatory visit of an active component service member.

**REPORTABLE EVENT DATA** contain information on medical events that are required as defined in the Armed Forces Reportable Medical Events Guidelines and Case Definitions. These data are a subset of information provided by the Disease Reporting System Internet (DRSi).

## CONTACT INFORMATION

### User Guide

The DMED User's Guide is available as an Adobe Portable Document at <http://www.afhsc.mil/dmed/>. It can be printed via the Acrobat Reader's print button on its tool bar. Users may also refer to 'Getting Started' and the online 'Help' for guidance in using DMED. And look for upcoming training videos.

### Troubleshooting DMED

For technical assistance in using DMED contact the administrator at the following email address:

[dha.ncr.health-surv.mbx.afhs-dmed@mail.mil](mailto:dha.ncr.health-surv.mbx.afhs-dmed@mail.mil)