

FACT SHEET

Solution Delivery Division

DELIVERING SOLUTIONS, ADVANCING HEALTH CARE



About Solution Delivery Division

The mission of Solution Delivery Division (SDD) is to deliver information technology solutions to the Military Health System through expert acquisition program management, process reengineering, training and integration activities in order to support and advance the delivery of health care to our patients.

- ▶ Project and program management with enterprise-wide master scheduling, standardized workflow and role-based training development/implementation
- ▶ Organizational change management services and operational systems integration to all military treatment facilities

SDD Portfolio

- ▶ Functional benefits to drive health care to health
- ▶ Real-time global medical surveillance
- ▶ Provider credentials/privileging
- ▶ Patient safety, nutrition services, blood programs, Service Treatment Record, care coordination, occupational health, and more
- ▶ 300+ terabyte global operational data store
 - Daily data feeds to Veterans Health Administration, the Centers for Disease Control and Prevention, and the Services
 - More than 1,000 interfaces worldwide



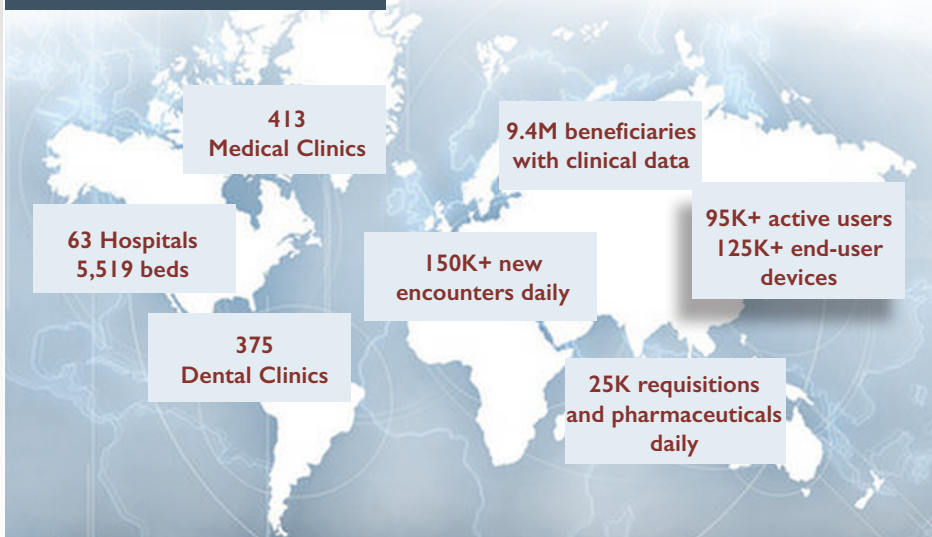
Clinical EHR Solutions

- ▶ AHLTA – outpatient EHR
- ▶ Essentris® – inpatient EHR
- ▶ CHCS – appointing and ancillary
- ▶ Secure Messaging and TOL Patient Portal
- ▶ EHR Sustainment - transition to new, modernized EHR
- ▶ HAIMS - artifacts and imaging
- ▶ EBMS - blood product management

Business & Administrative Solutions

- ▶ DMHRSi - medical human resources
- ▶ ESSENCE - syndromic medical surveillance
- ▶ DMLSS - medical logistics
- ▶ JCCQAS - credentialing
- ▶ iMEDCONSENT - patient consent
- ▶ S3 - surgical scheduling
- ▶ PSR - patient safety
- ▶ eIRB - research support
- ▶ CCE - medical coding assistance

Global Reach in all MTF



SDD is a component of DHA DAD IO (J-6). For more information, visit www.health.mil/SDD. To subscribe for SDD product news, please visit <https://public.govdelivery.com/accounts/USMHS/DHSS/subscriber/new>.