

UF Decision Report FY06-07



Beneficiary Advisory Panel

10 Jan 2008

UF Decisions, May 07

	Class FY05 rank, total \$	Implementation (decision date – implementation date)	Uniform Formulary		BCF / ECF
			On UF	NF	
May 07	Antilipidemics II	24 Jul 07 – 21 Nov 07 (120 days)	Multiple meds (fenofibrate except Antara, Tricor) gemfibrozil cholestyramine colestipol	Micronized and nanocrystallized fenofibrate (Antara, Tricor) colesevelam (Welchol) prescription omega-3 fatty acids (Lovaza, formerly Omacor)	BCF – gemfibrozil IDD-P fenofibrate (Triglide)
	5-ARIs	24 Jul 07 – 24 Oct 07 (90 days)	finasteride	dutasteride (Avodart)	BCF – finasteride
	ARBs	24 Jul 07 – 21 Nov 07 (120 days)	candesartan (Atacand) losartan (Cozaar) telmisartan (Micardis) (& HCTZ combos)	Irbesartan (Avapro) eprosartan (Teveten) olmesartan (Benicar) valsartan (Diovan) (& HCTZ combos)	BCF – telmisartan (Micardis & Micardis HCT)
	PPIs	24 Jul 07 – 24 Oct 07 (90 days)	omeprazole esomeprazole (Nexium)	lansoprazole (Prevacid) omeprazole/sodium bicarb (Zegerid) pantoprazole (Protonix) rabeprazole (Aciphex)	BCF – generic omeprazole esomeprazole
Auto PA – omeprazole or esomeprazole prior to non-formulary PPIs					



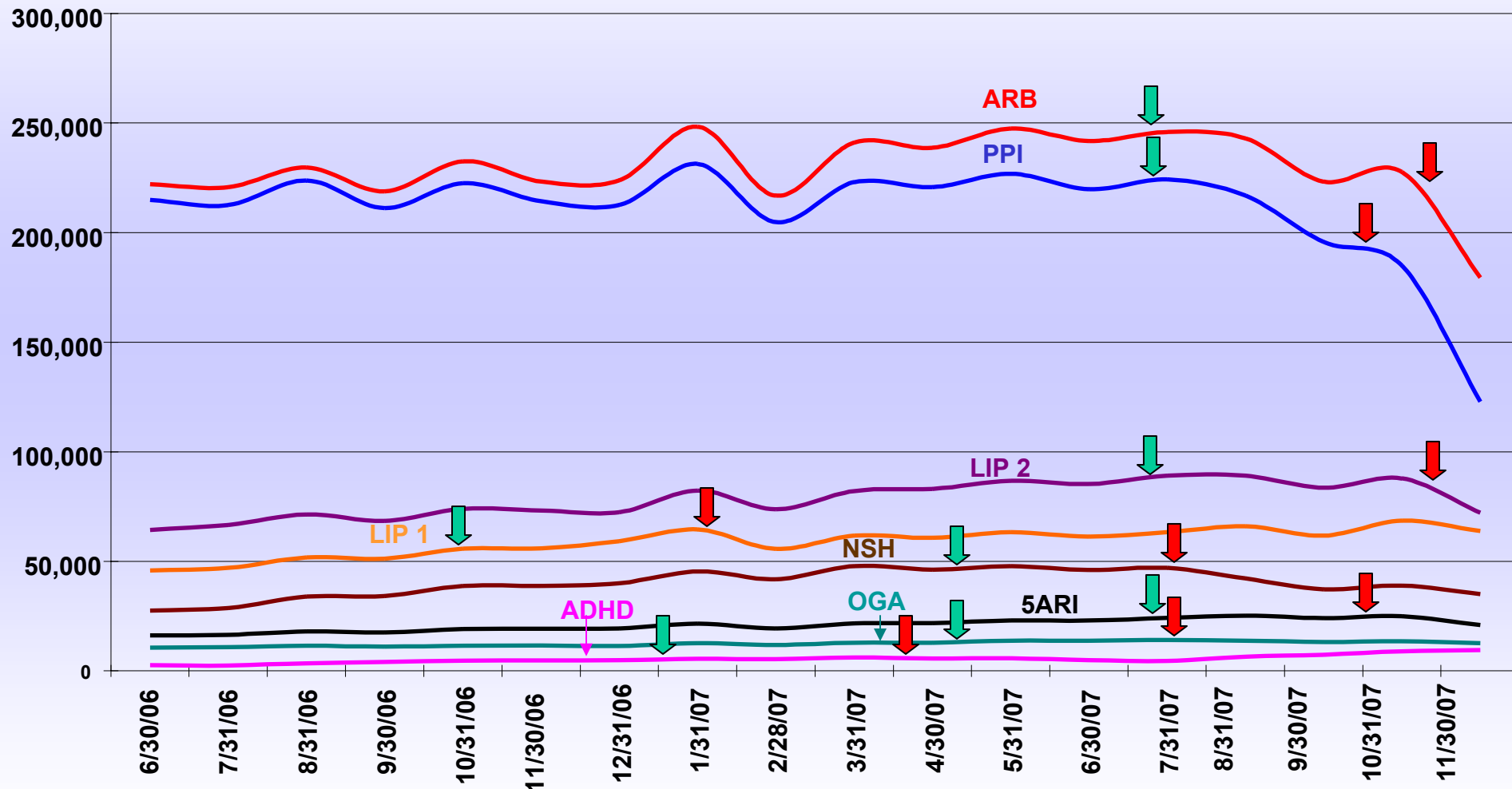
UF Decisions, Feb 07



	Class	Implementation (decision date – implementation date)	Uniform Formulary		BCF / ECF
			On UF	NF	
Feb 07	Ophthalmic Glaucoma Agents	2 May 07 – 1 Aug 07 (90 days)	multiple meds	travoprost (Travatan, Travatan Z); timolol hemihydrate (Betimol); timolol maleate (Istalol); brinzolamide (Azopt)	latanoprost (Xalatan); timolol maleate soln 0.25% and 0.5% soln & gel-forming soln; brimonidine 0.2% & 0.15%; pilocarpine
	Newer Sedative Hypnotics (SED-1s)	2 May 07 – 1 Aug 07 (90 days)	eszopiclone (Lunesta) zolpidem IR	ramelteon (Rozerem) zaleplon (Sonata) zolpidem ER (Ambien CR)	zolpidem IR (Ambien)
Zolpidem IR prior to Ambien CR, Lunesta, Rozerem, Sonata					
Nov 06	ADHD / Narcolepsy Agents	17 Jan 07 – 18 Apr 07 (90 days)	atomoxetine, methyl- phenidate IR & ER, mixed amphetamine salts, IR & ER (Adderall XR), dextroamphetamine, methamphetamine modafinil, Na oxybate	dexmethylphenidate IR and ER (Focalin, Focalin XR) methylphenidate patch (Daytrana)	methylphenidate IR & ER (specifically Concerta) amphetamine salts, ER (Adderall XR)
Aug 06	LIP1s	23 Oct 06 – 1 Feb 07 (90 days)	atorvastatin (Lipitor); ezetimibe/simvastatin (Vytorin); ezetimibe (Zetia); fluvastatin IR & ER (Lescol, Lescol XL); lovastatin IR & ER (Altoprev); niacin ER (Niaspan); niacin IR; niacin ER/lovastatin (Advicor) pravastatin; simvastatin	rosuvastatin (Crestor) atorvastatin/ amlodipine (Caduet)	simvastatin; pravastatin; niacin ER (Niaspan); ezetimibe/ simvastatin (Vytorin)

- **Definitions**
 - **30 day equivalent (30d equiv)**
 - **Automated prior authorization (Auto PA)**
 - **UF VARR**
- **18 month look back**
 - **Arbitrary for 6 months prior to statin decision**



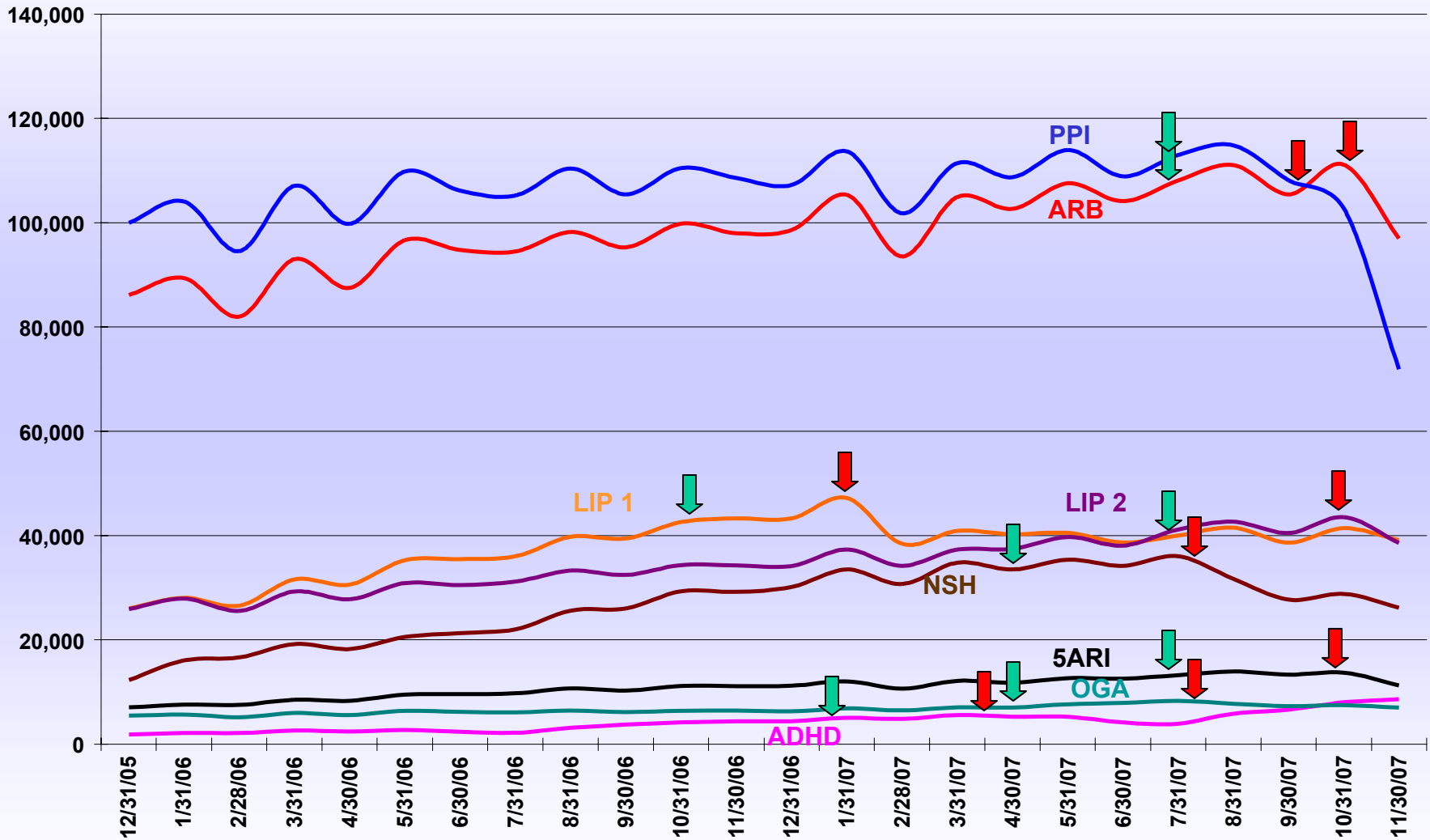
NF/3rd Tier 30d equiv All POS





 Signing date
 Implementation date



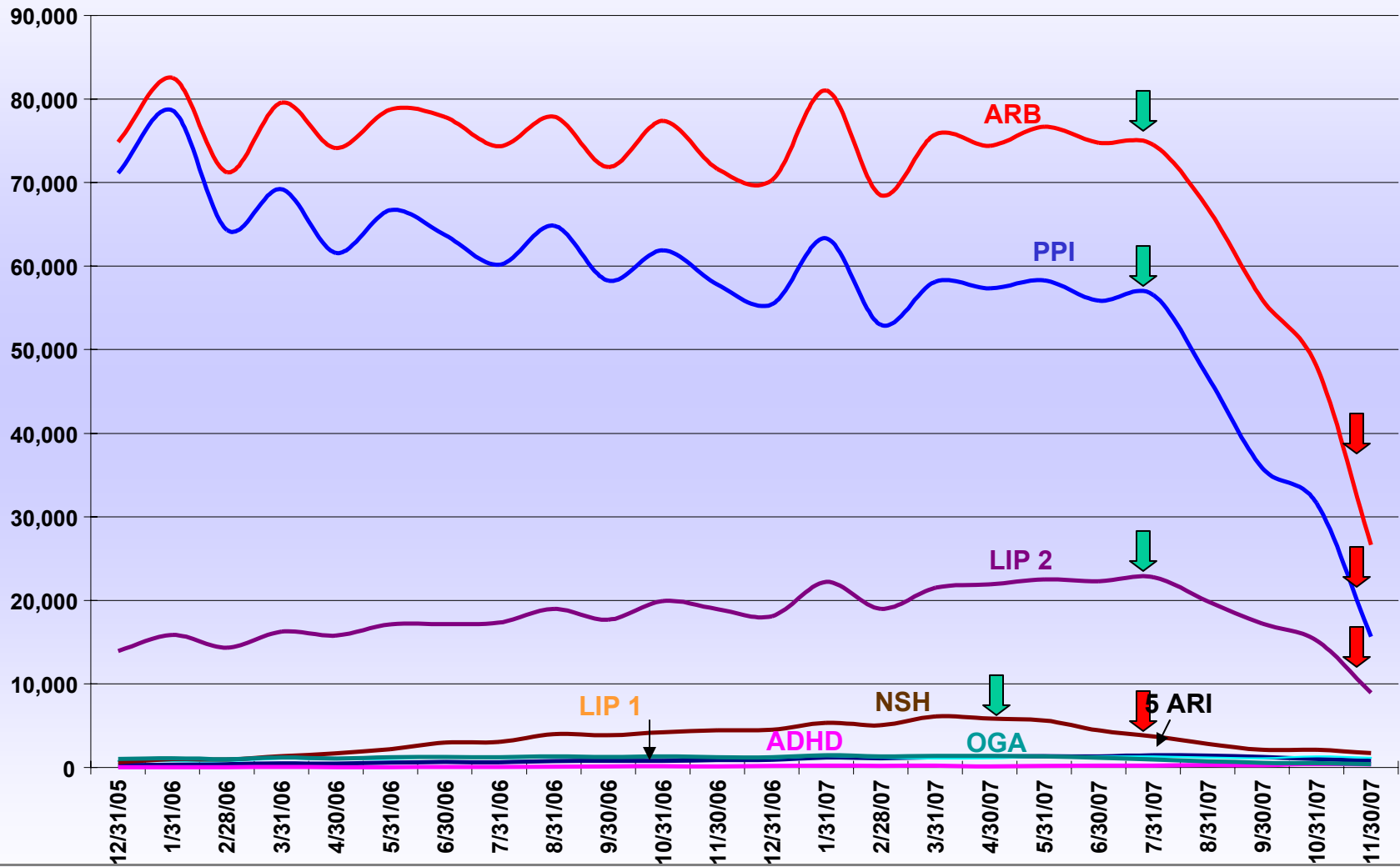
NF/3rd Tier 30 day Rx's Retail





 Signing date
 Implementation date



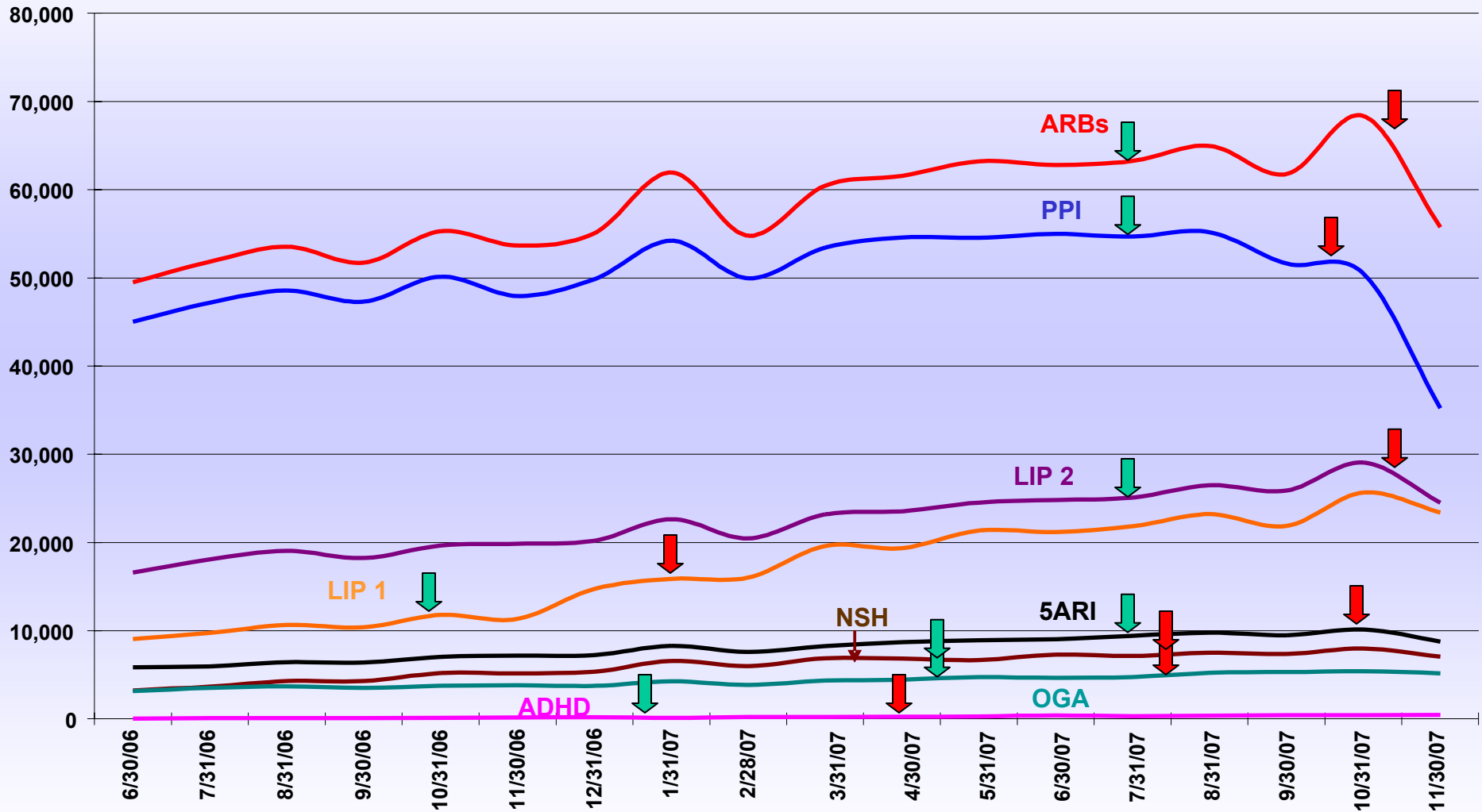
NF/3rd Tier 30 day Rx's MTFs





 Signing date
 Implementation date



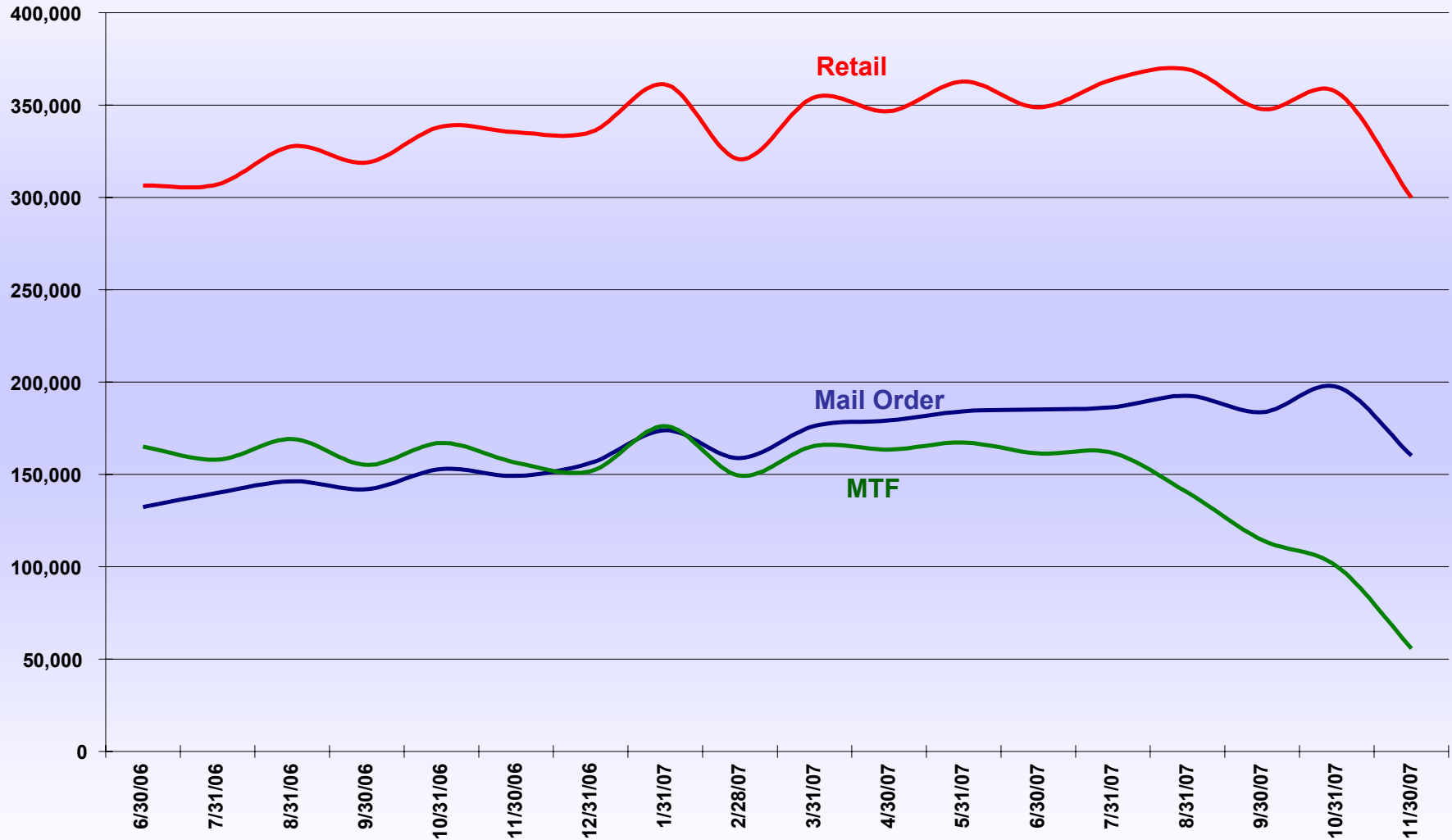
NF/3rd Tier 30 day Rxs Mail Order



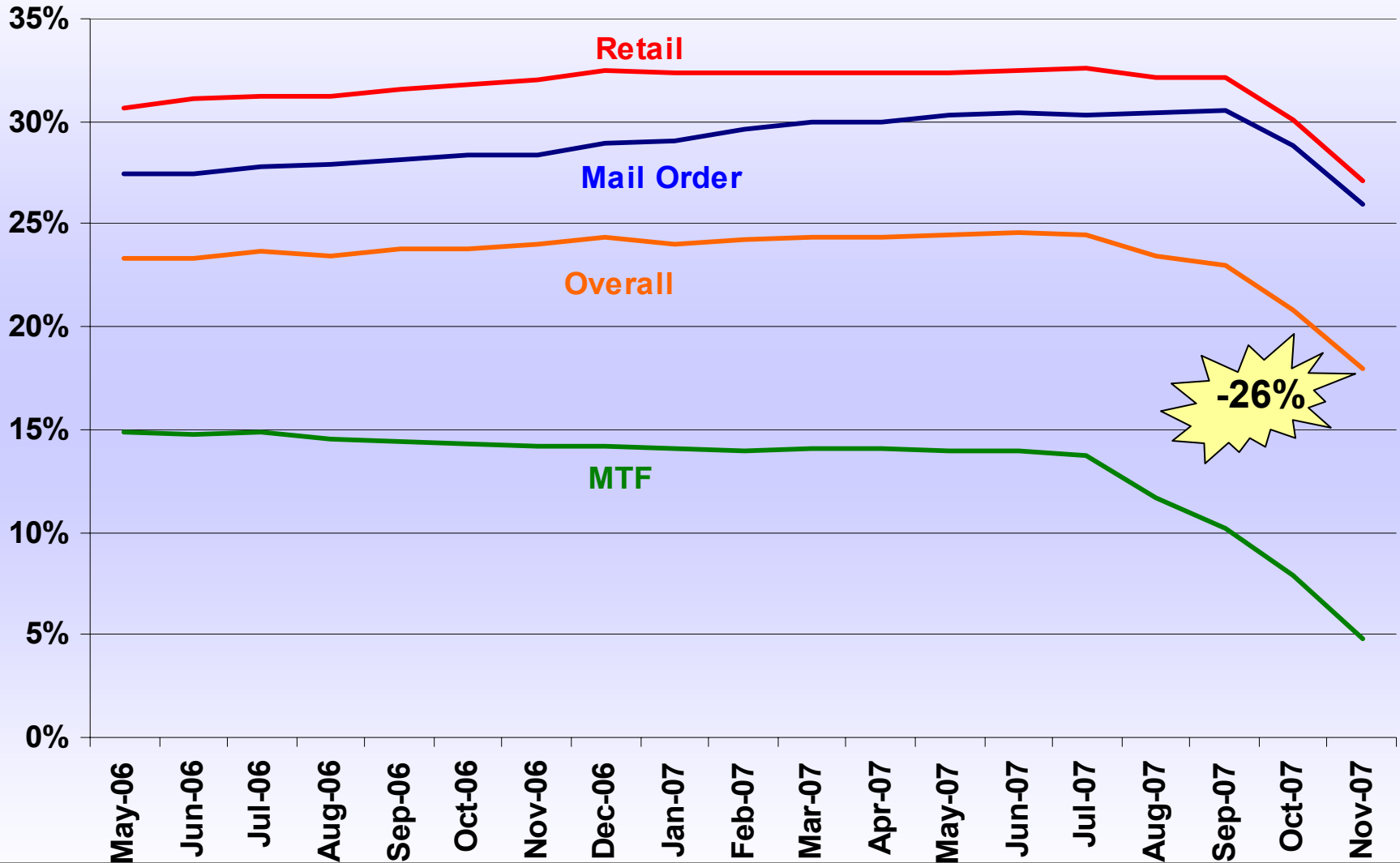
 Signing date
 Implementation date



NF/3rd Tier 30d Rxs By Point of Service



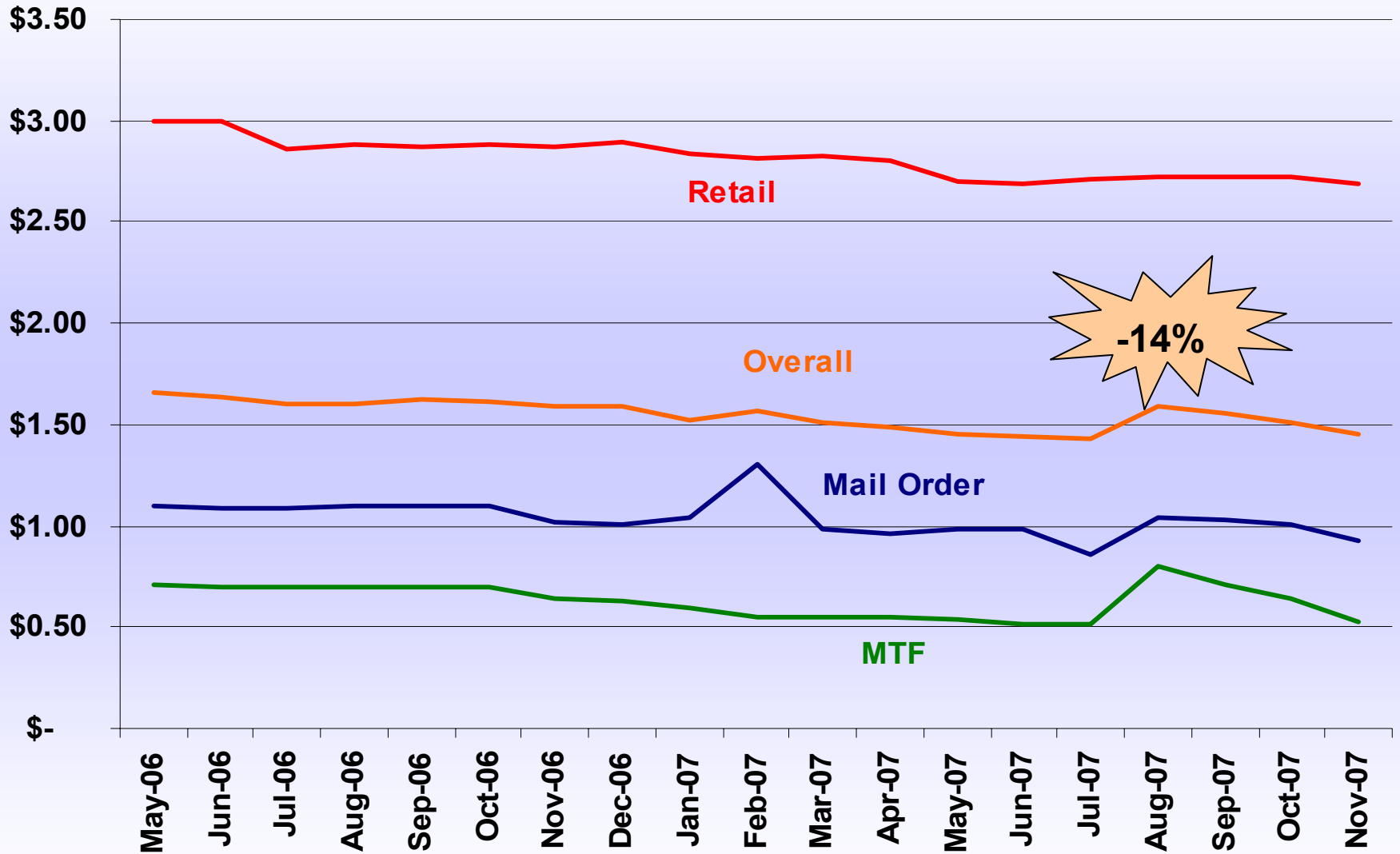
% NF/3rd Tier By POS 30d Rxs



-26%



Cost Per Day by POS

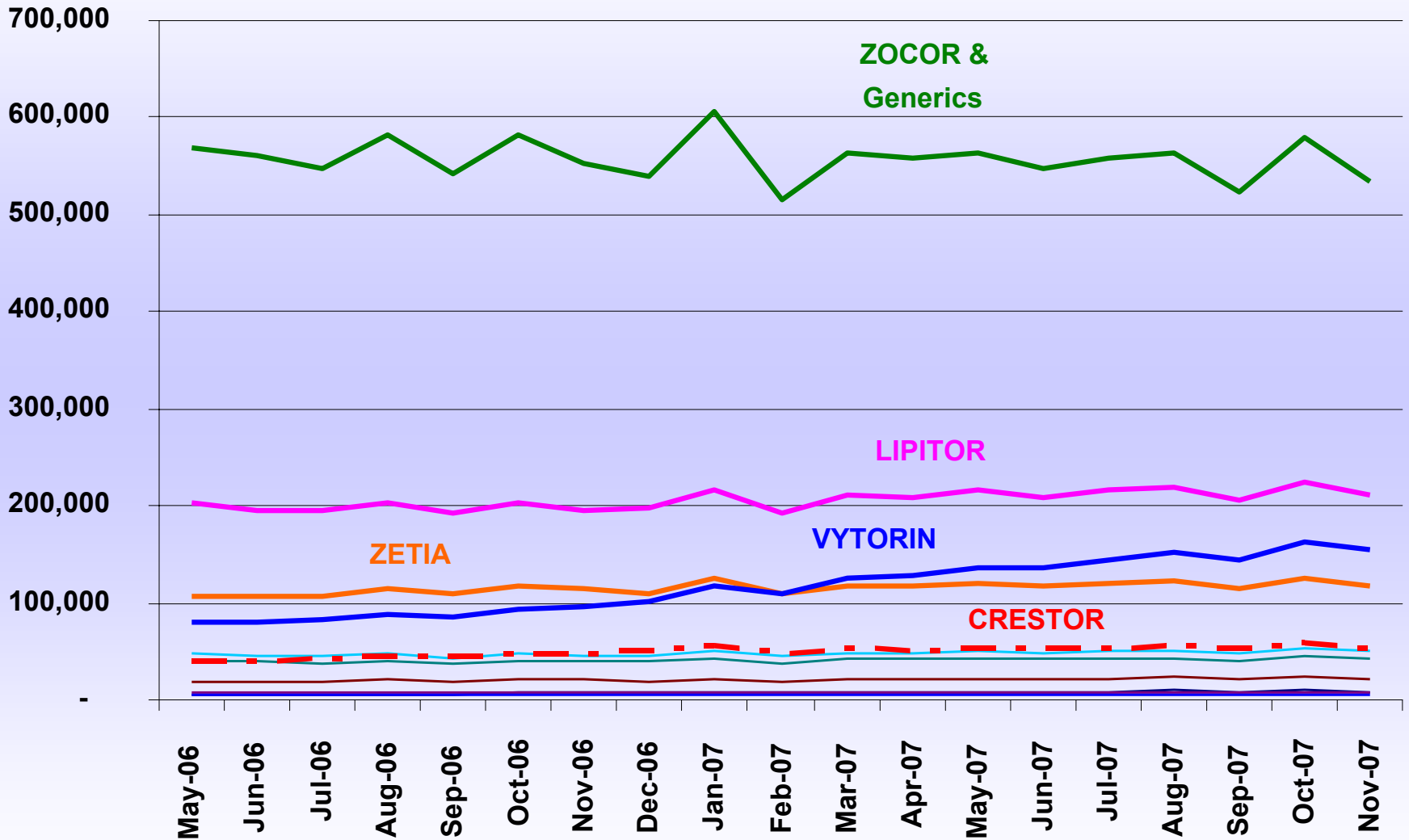


- **What affects utilization and cost**
 - **Formulary decisions**
 - **Drugs going generic**
 - **Implementation of Auto PA**
 - **Reality: Combination of all of the above**

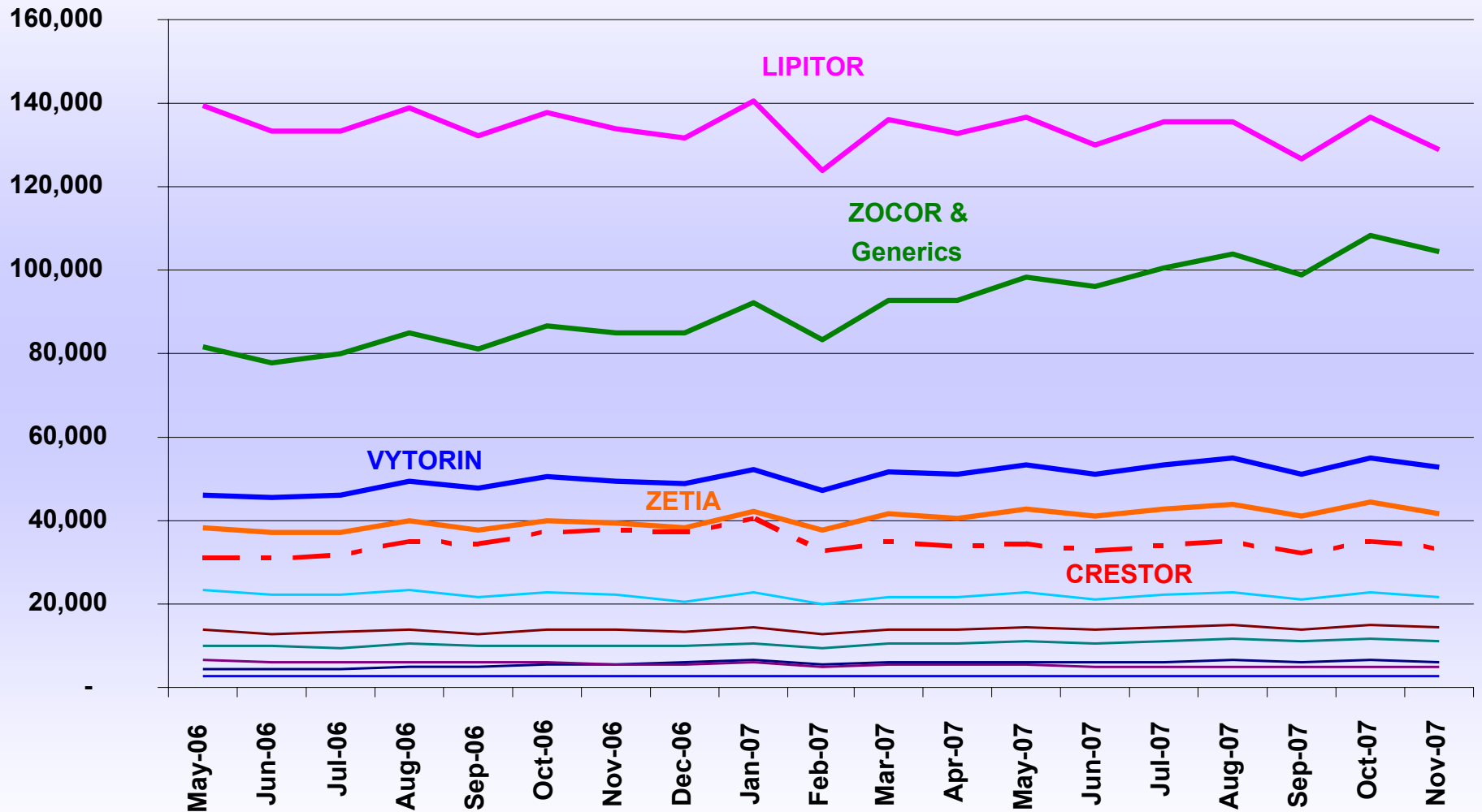
- **Example classes**
 - **Statins**
 - **Newer Sedative Hypnotics**
 - **PPIs**
 - **ADHD**



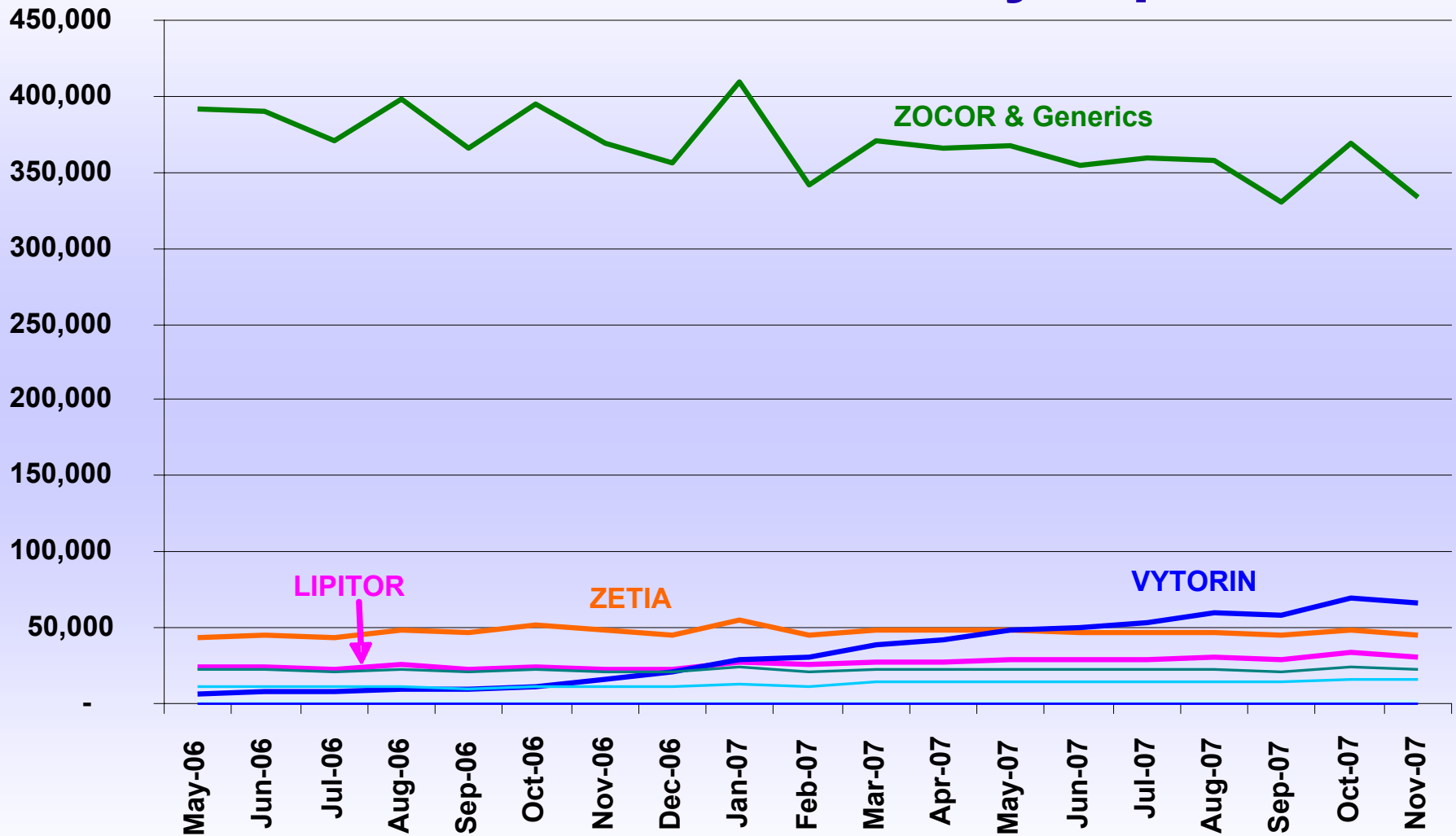
Statin Utilization – All POS 30 day Equivalents



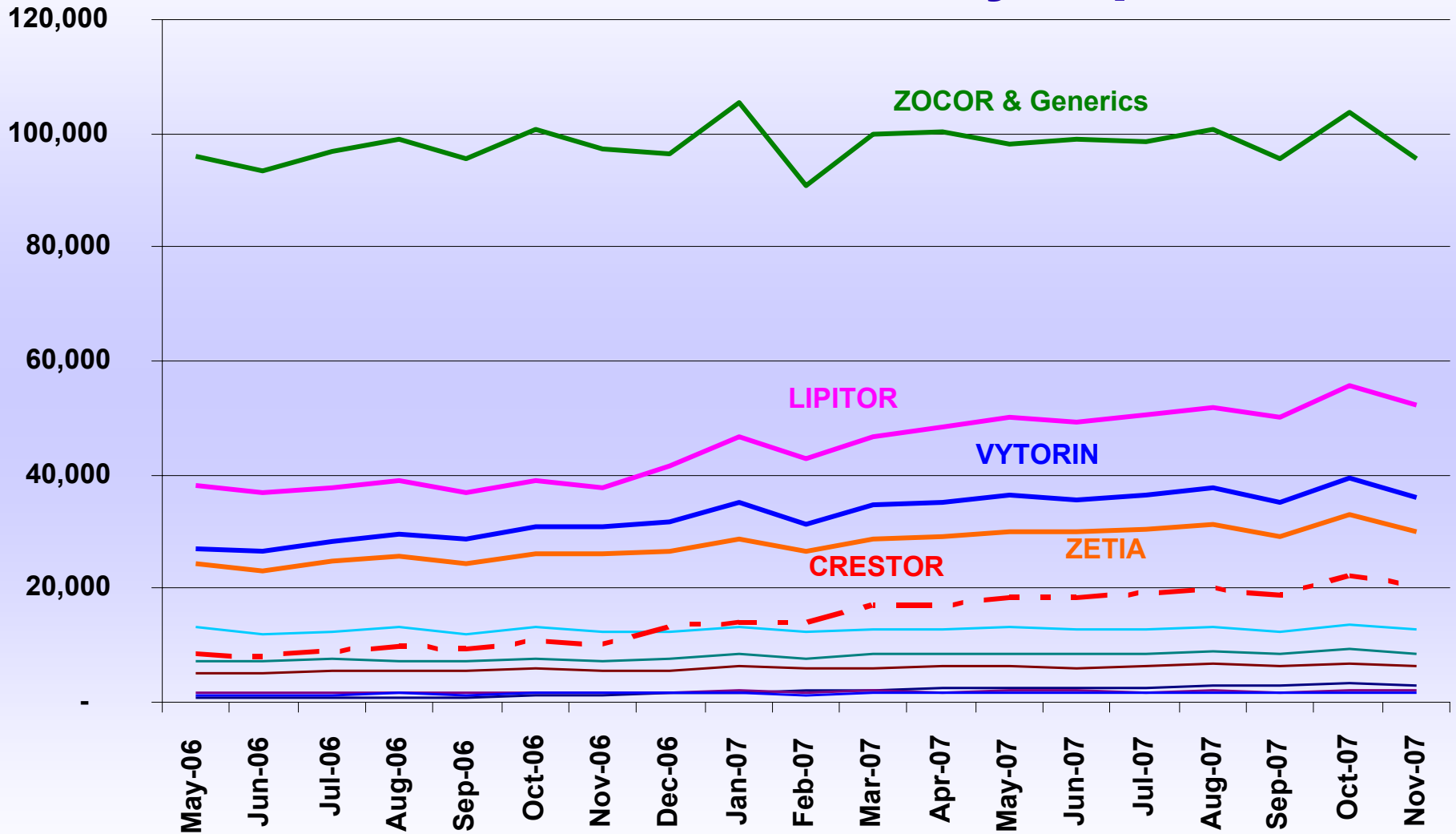
Statin Utilization – Retail 30 day Equivalents



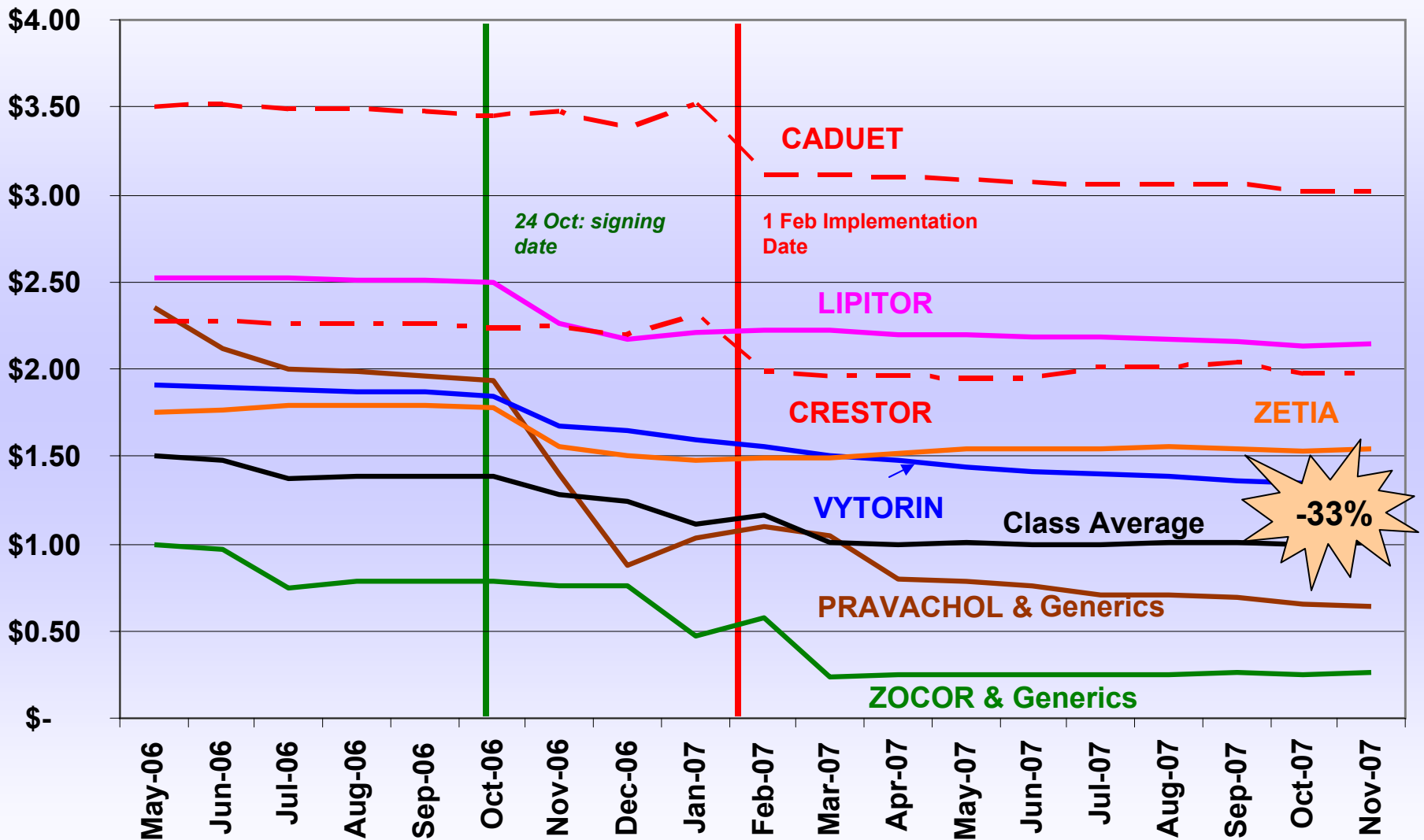
Statin Utilization – MTF 30 day Equivalents



Statin Utilization – Mail Order 30 day Equivalents



Statins Ave Cost/Day – All POS

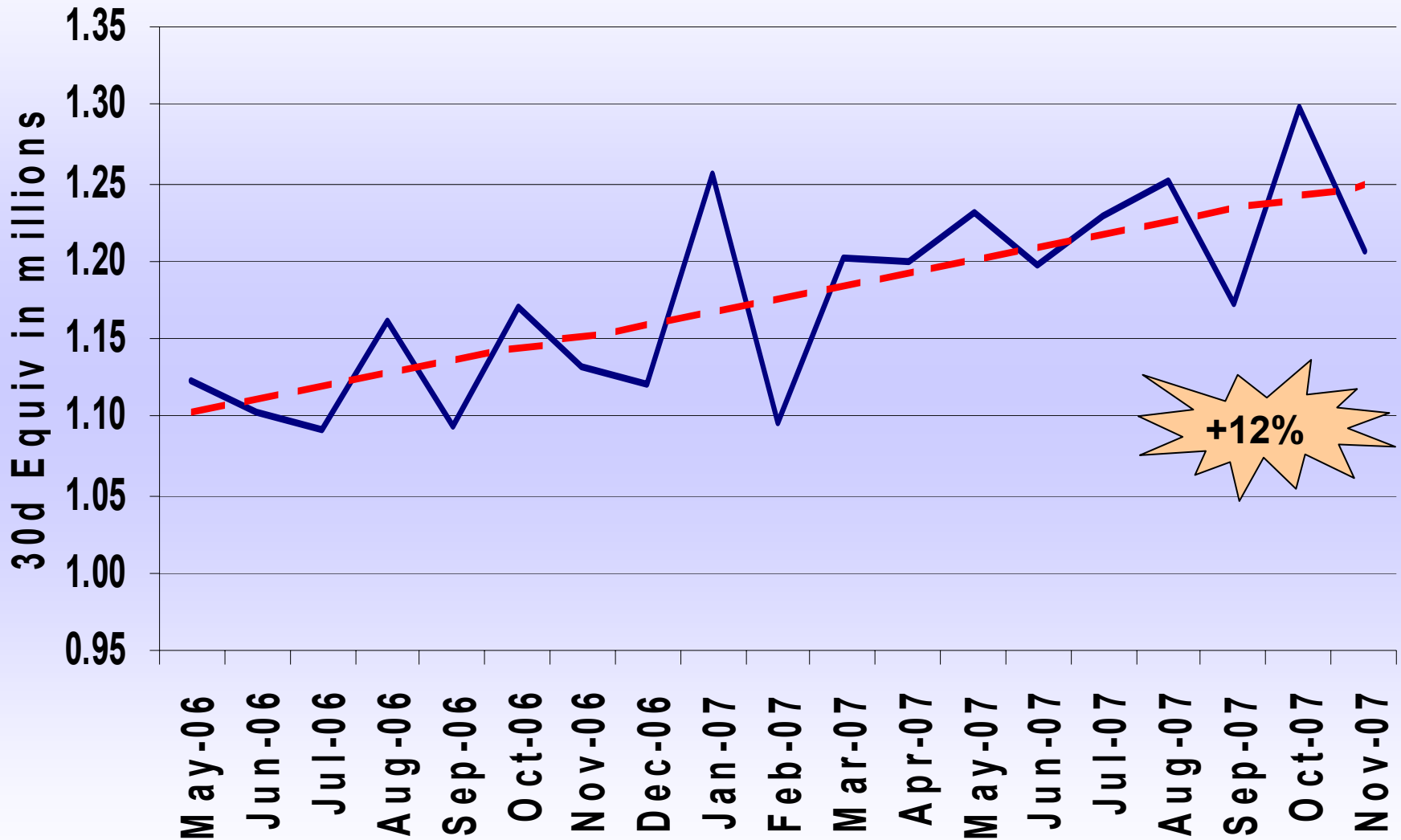


-33%

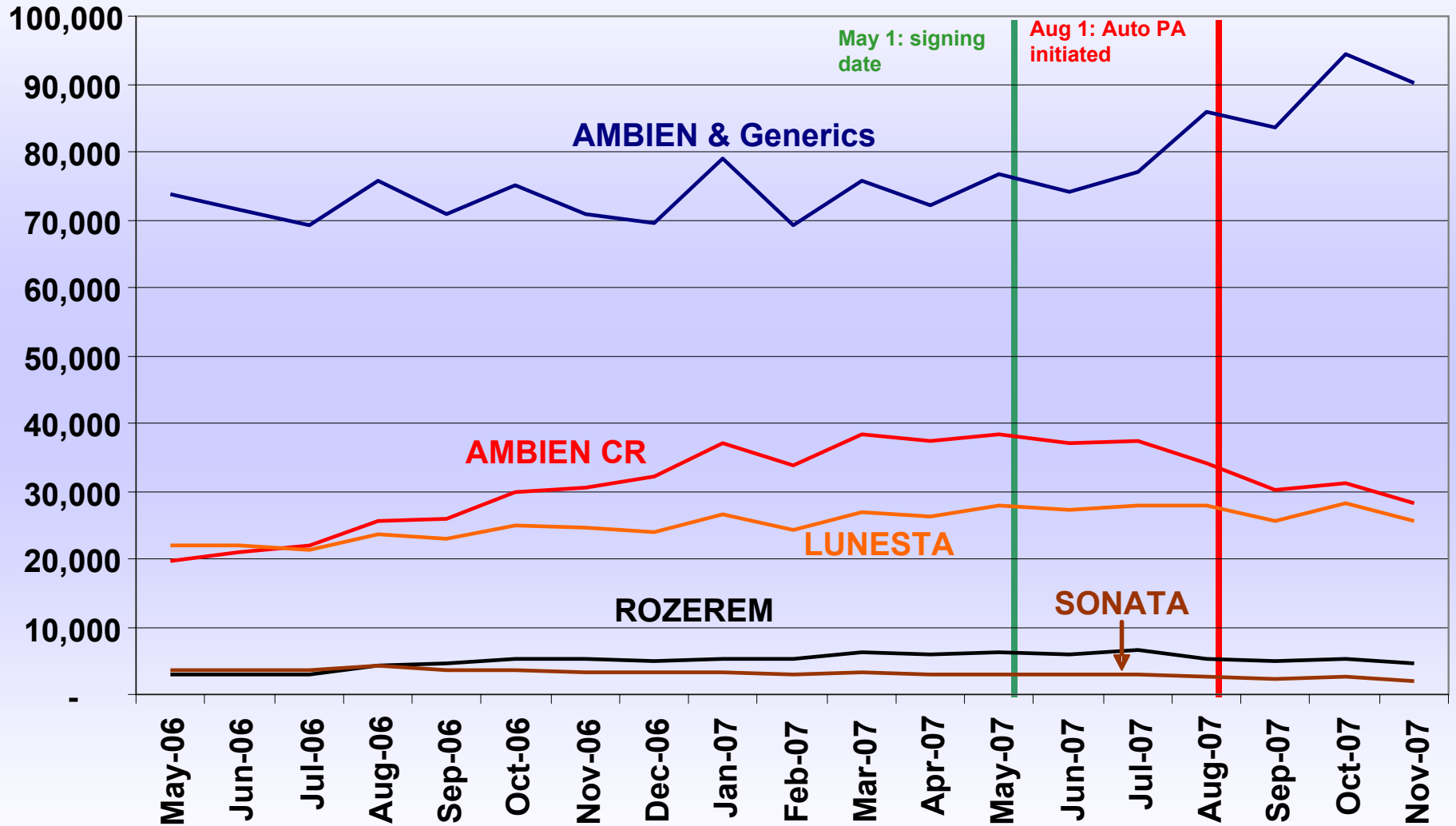


Statin 30d Equiv trend - All POS

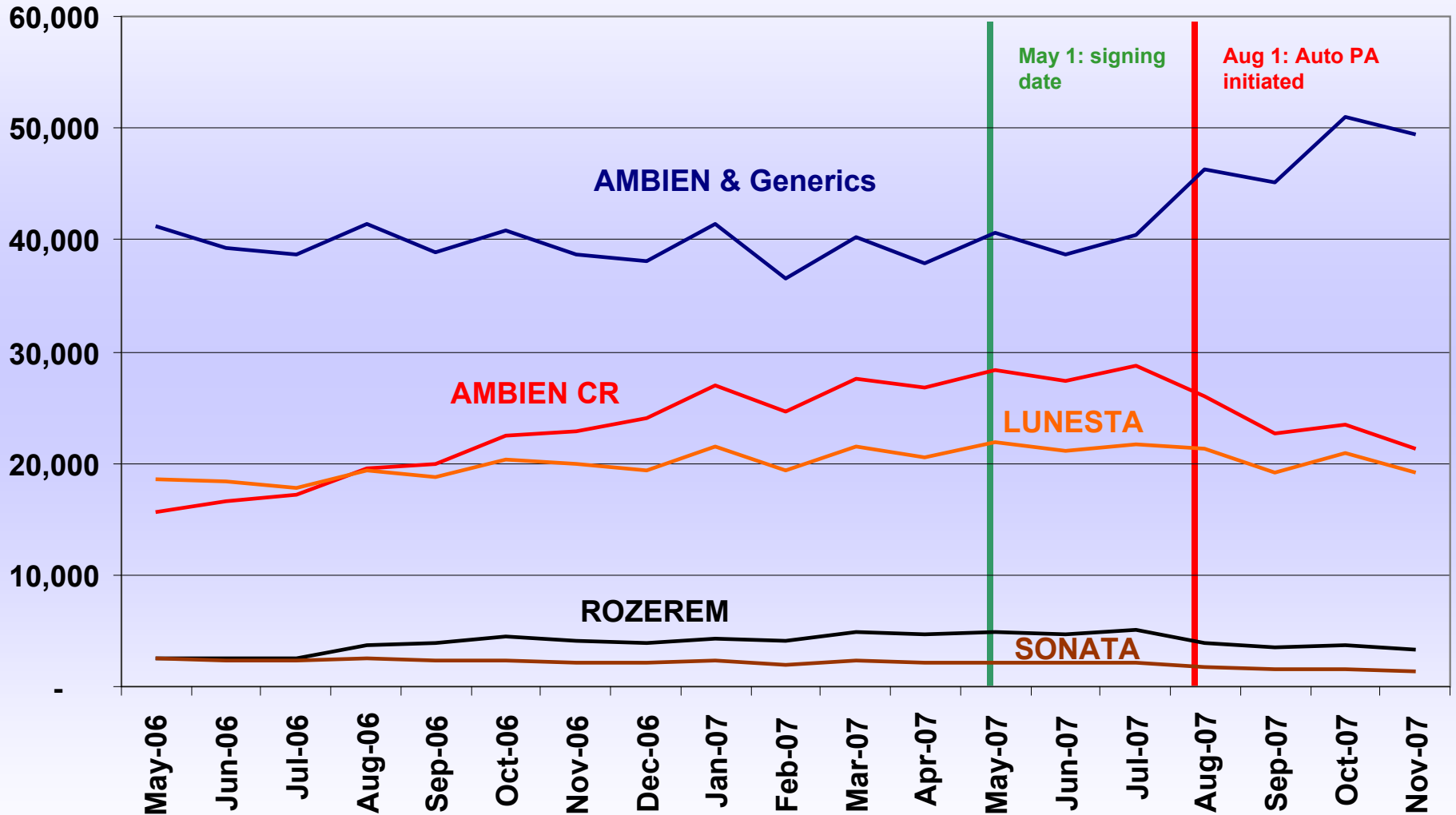
All drugs



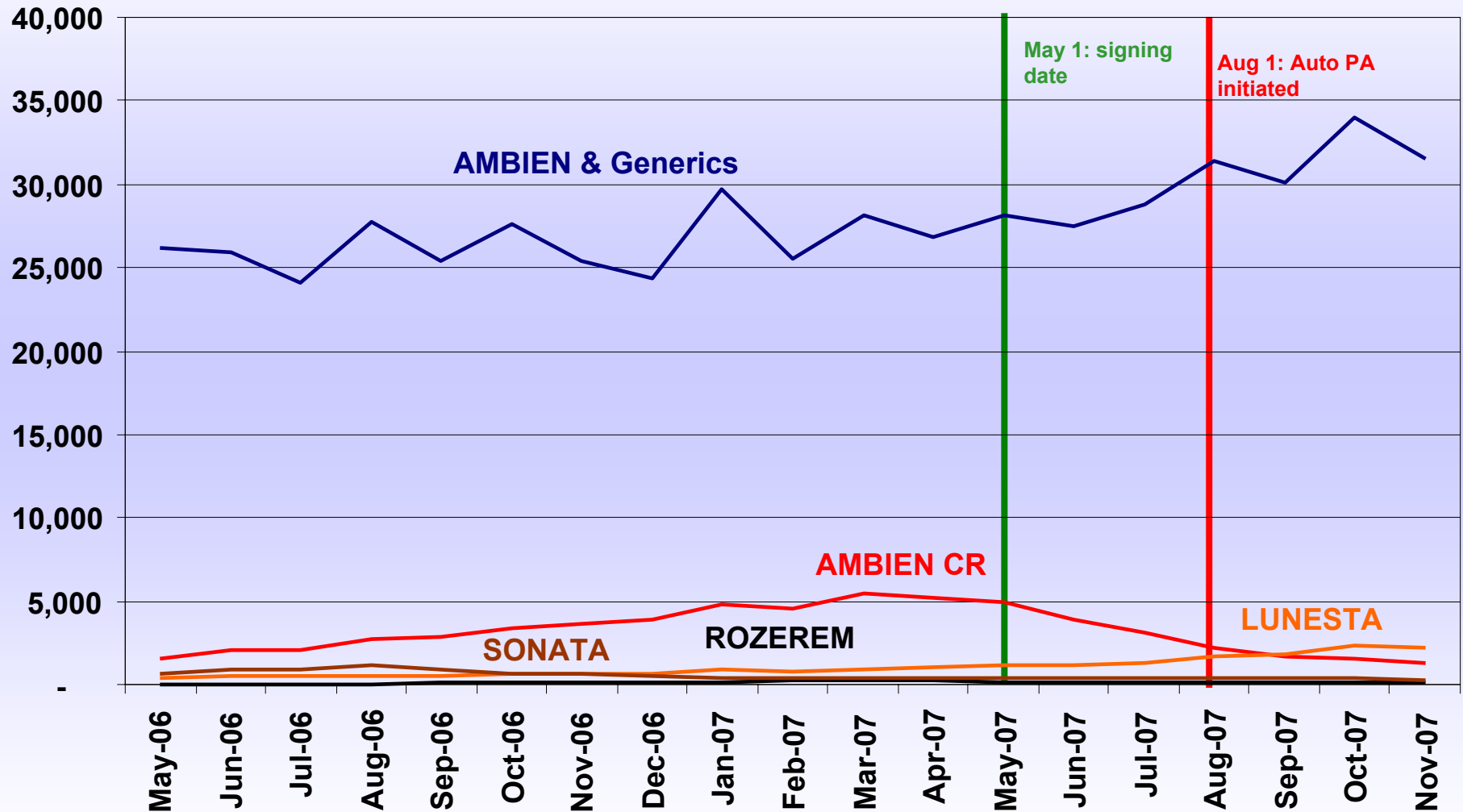
Newer Sedative Hypnotic Utilization – All POS 30 day Equivalents



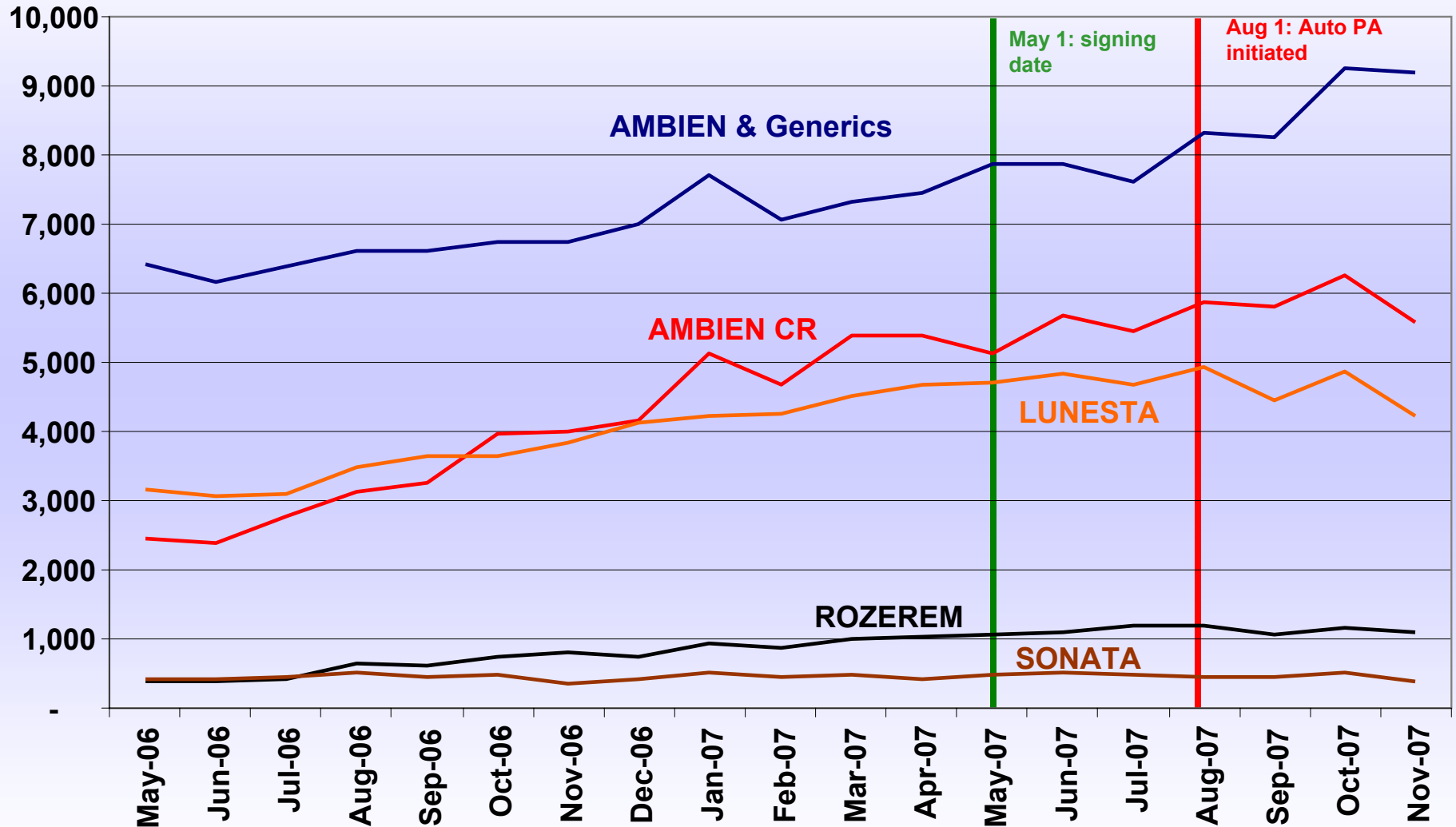
Newer Sedative Hypnotic Utilization– Retail 30 day Equivalents



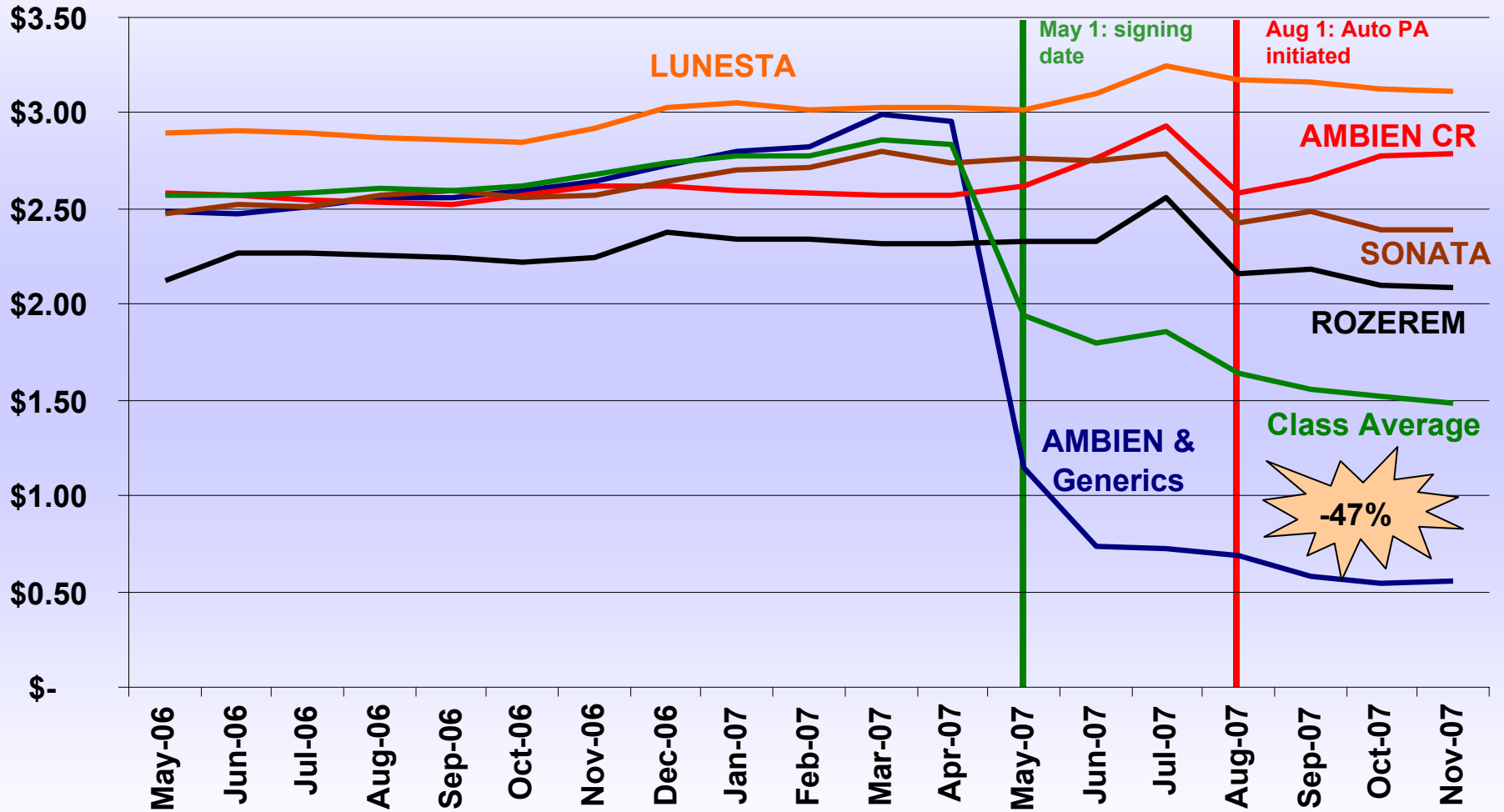
Newer Sedative Hypnotic Utilization – MTF 30 day Equivalents



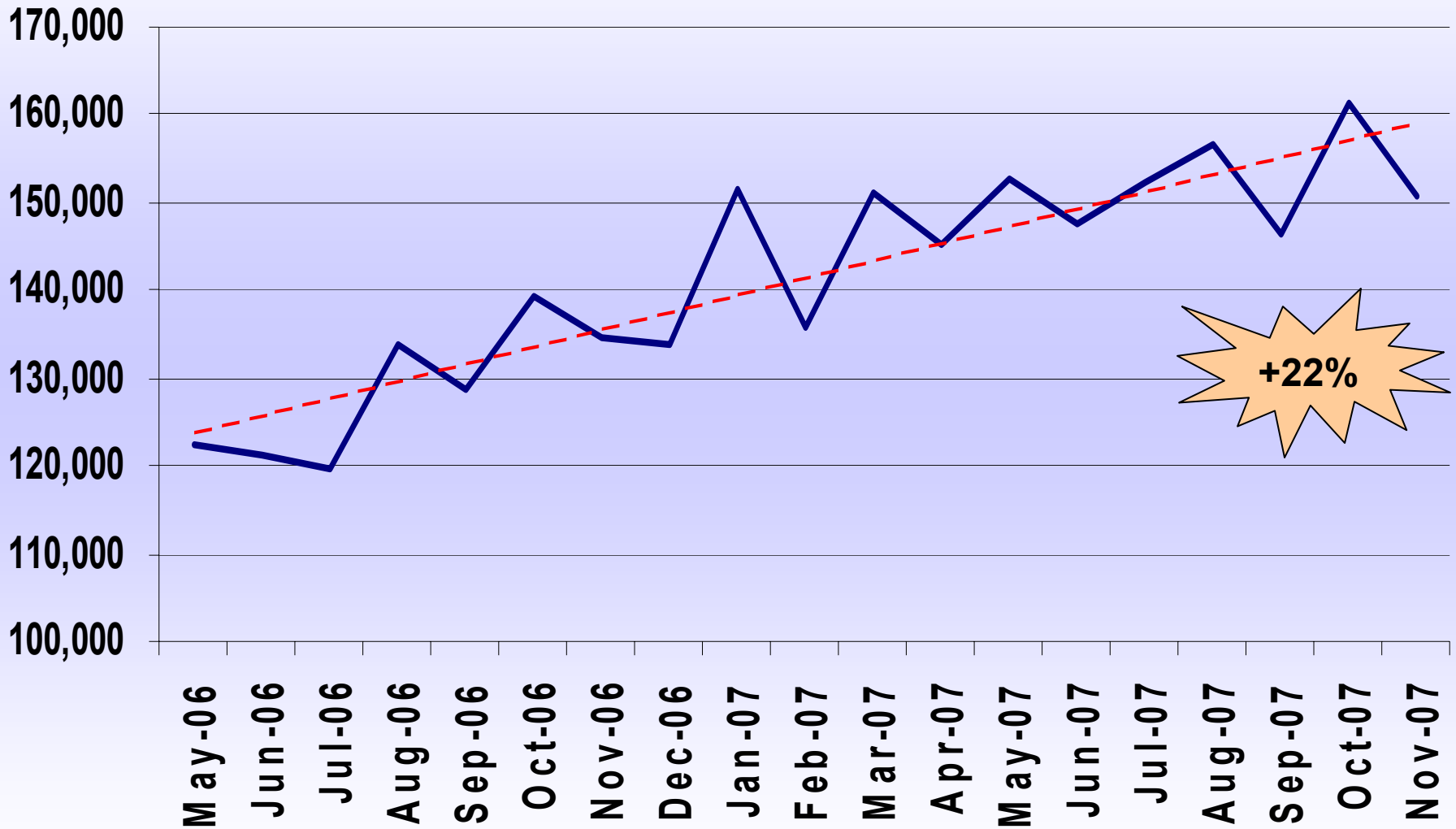
Newer Sedative Hypnotic Utilization– Mail Order 30 day Equivalents



Newer Sedative Hypnotic Ave. Cost/Day – All POS



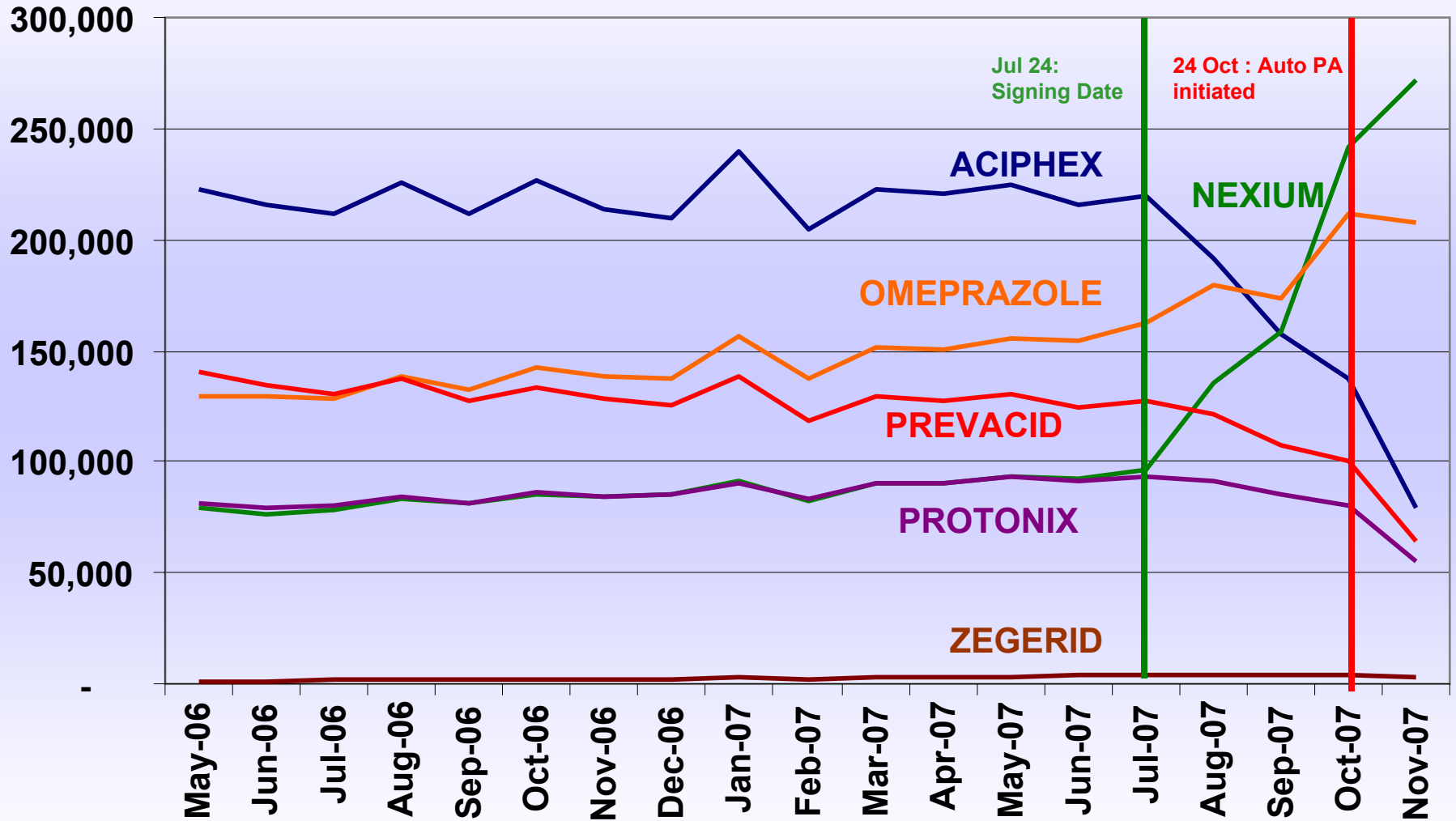
New Sedative Hypnotic 30d Equiv trend - All POS All drugs



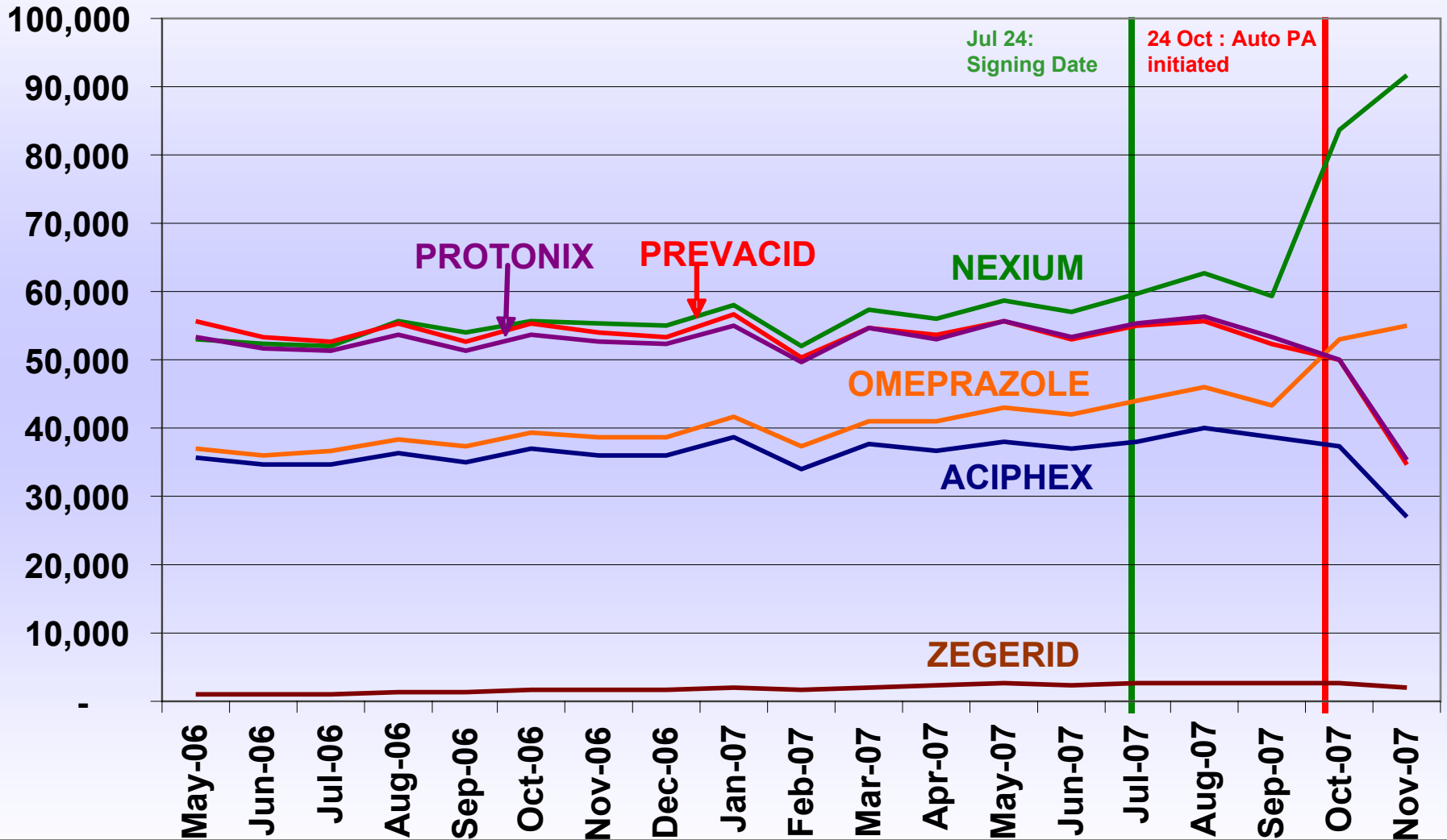
+22%



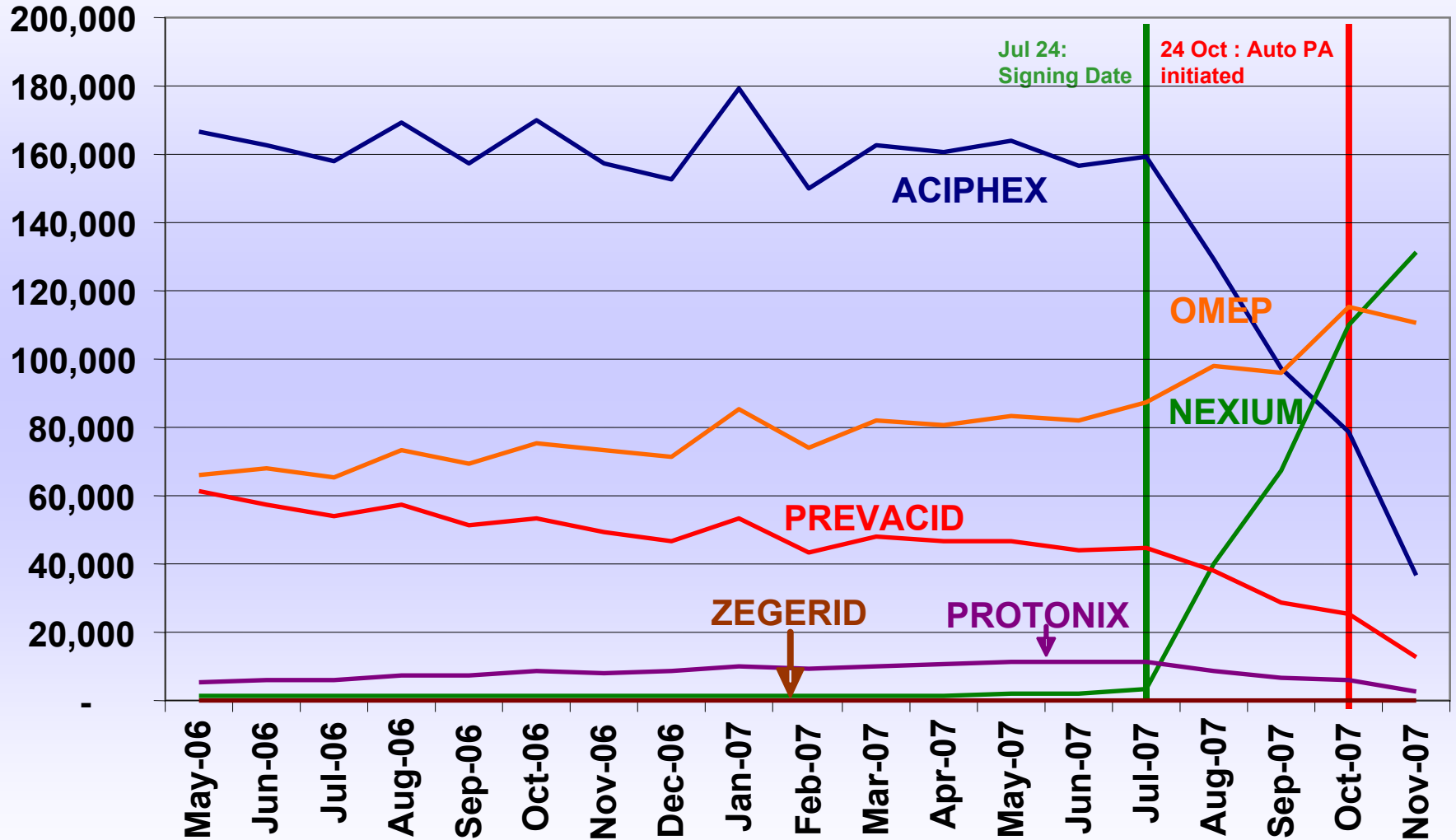
PPI Utilization – All POS 30 day Equivalents



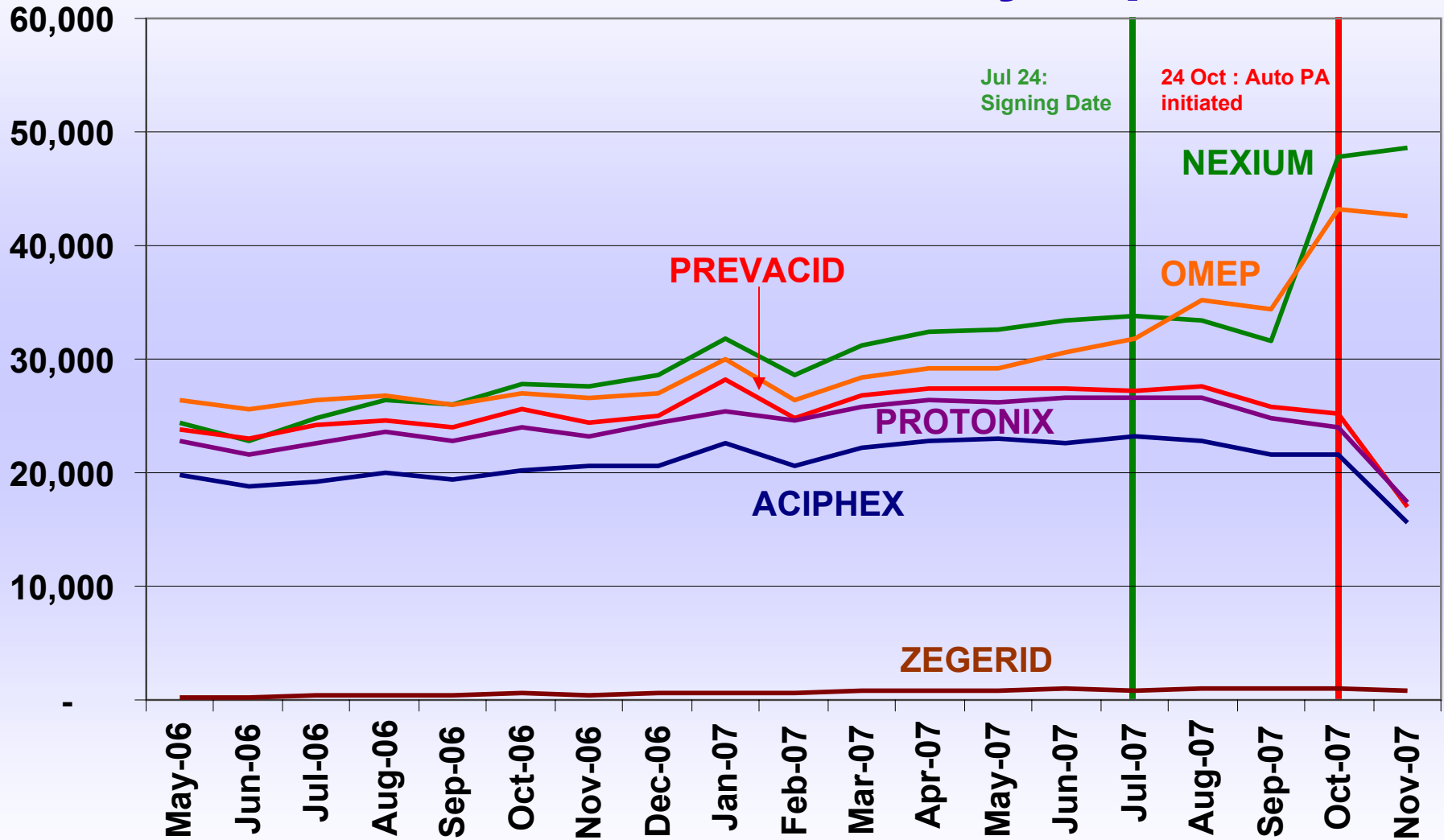
PPI Utilization – Retail 30 day Equivalents



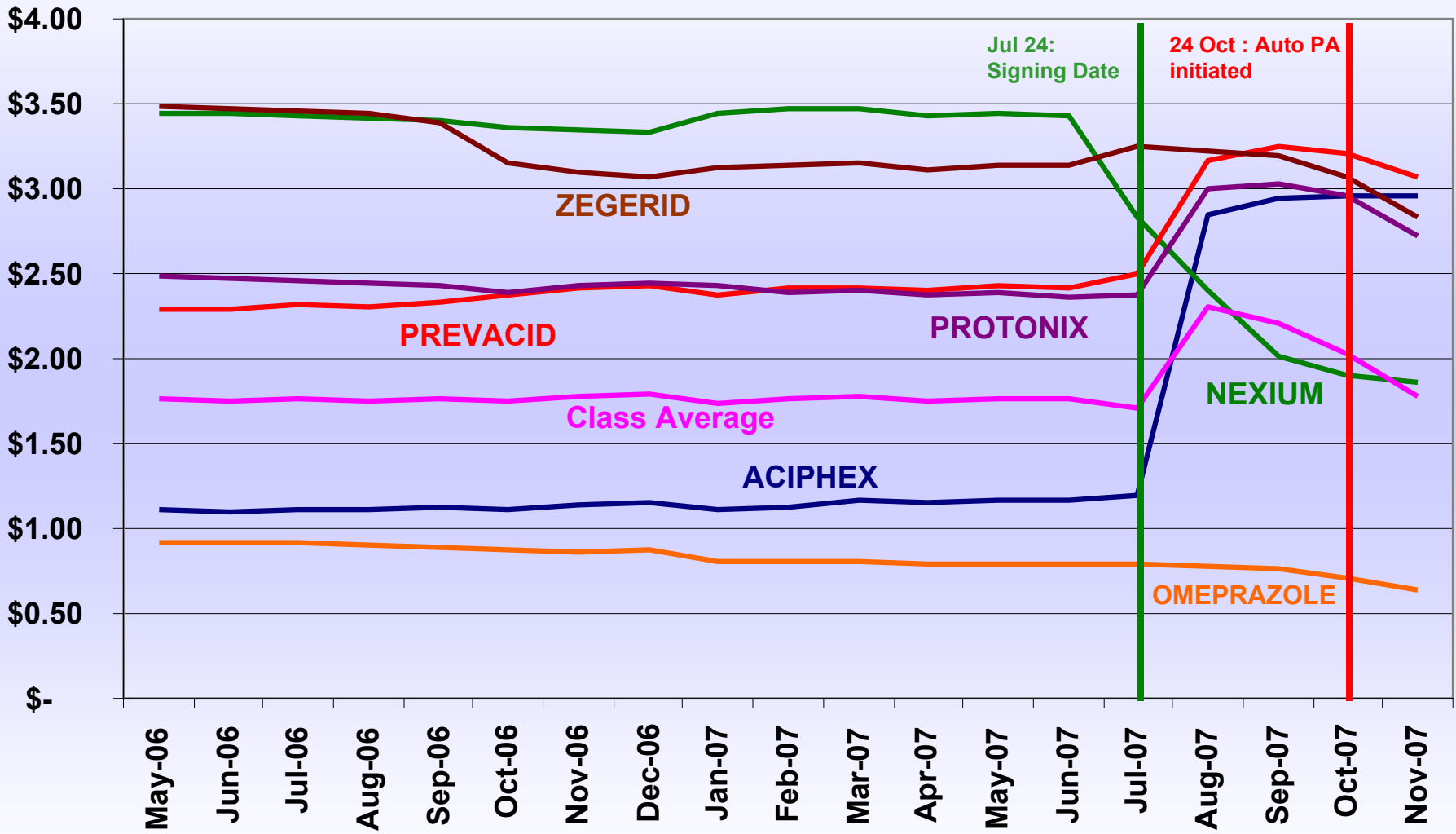
PPI Utilization – MTF 30 day Equivalents



PPI Utilization – Mail Order 30 day Equivalents

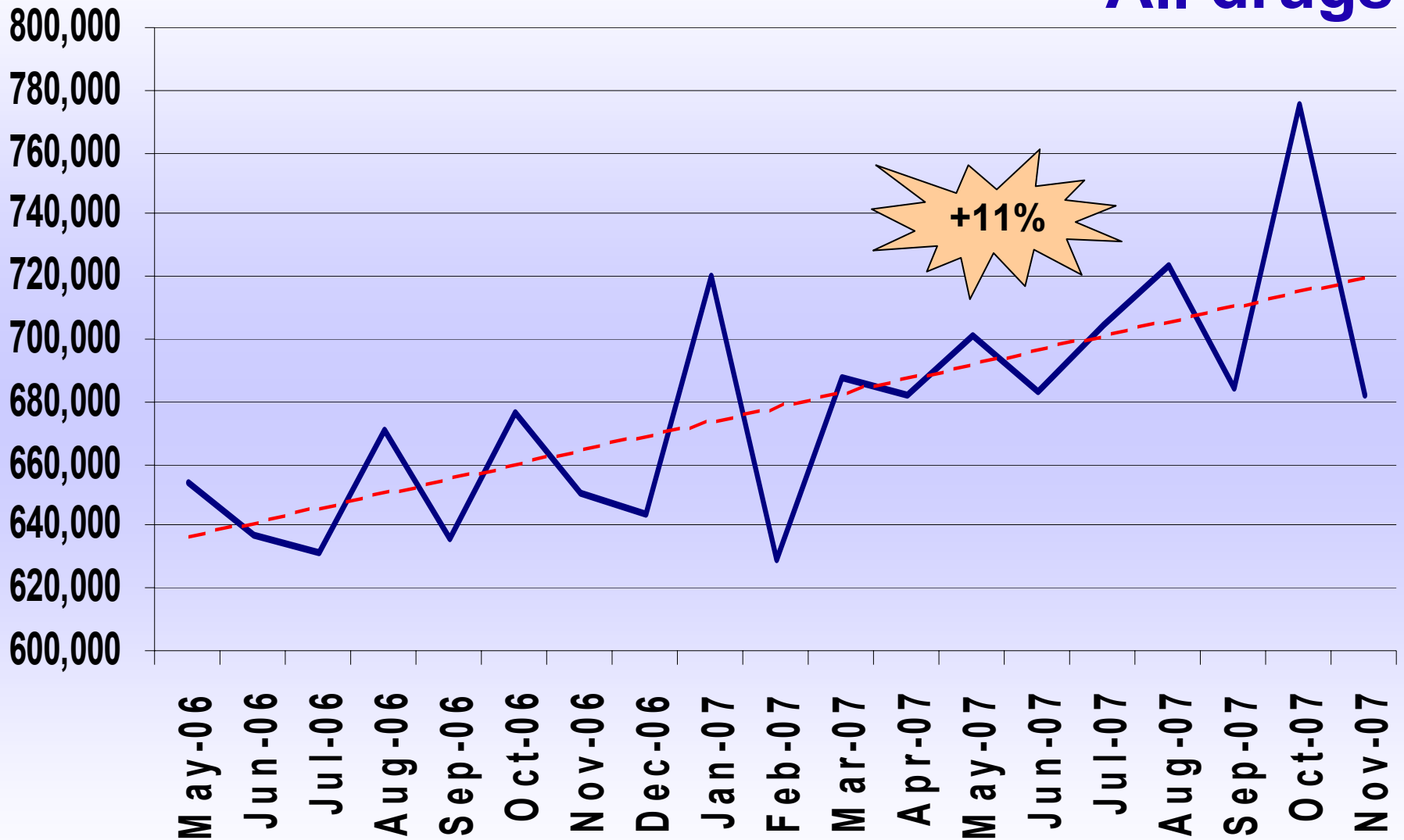


PPI Ave Cost/Day – All POS

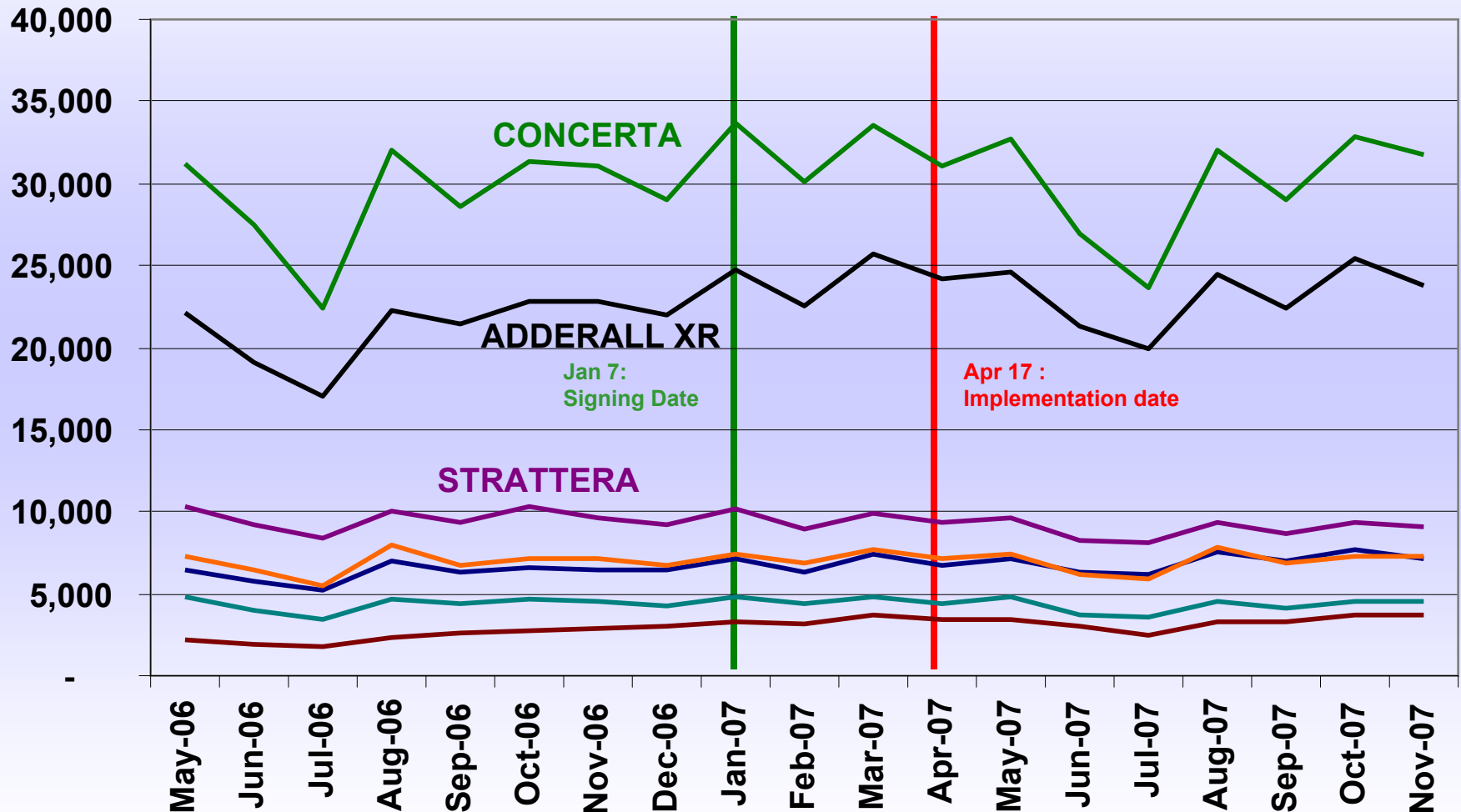


PPI 30d Equiv trend - All POS

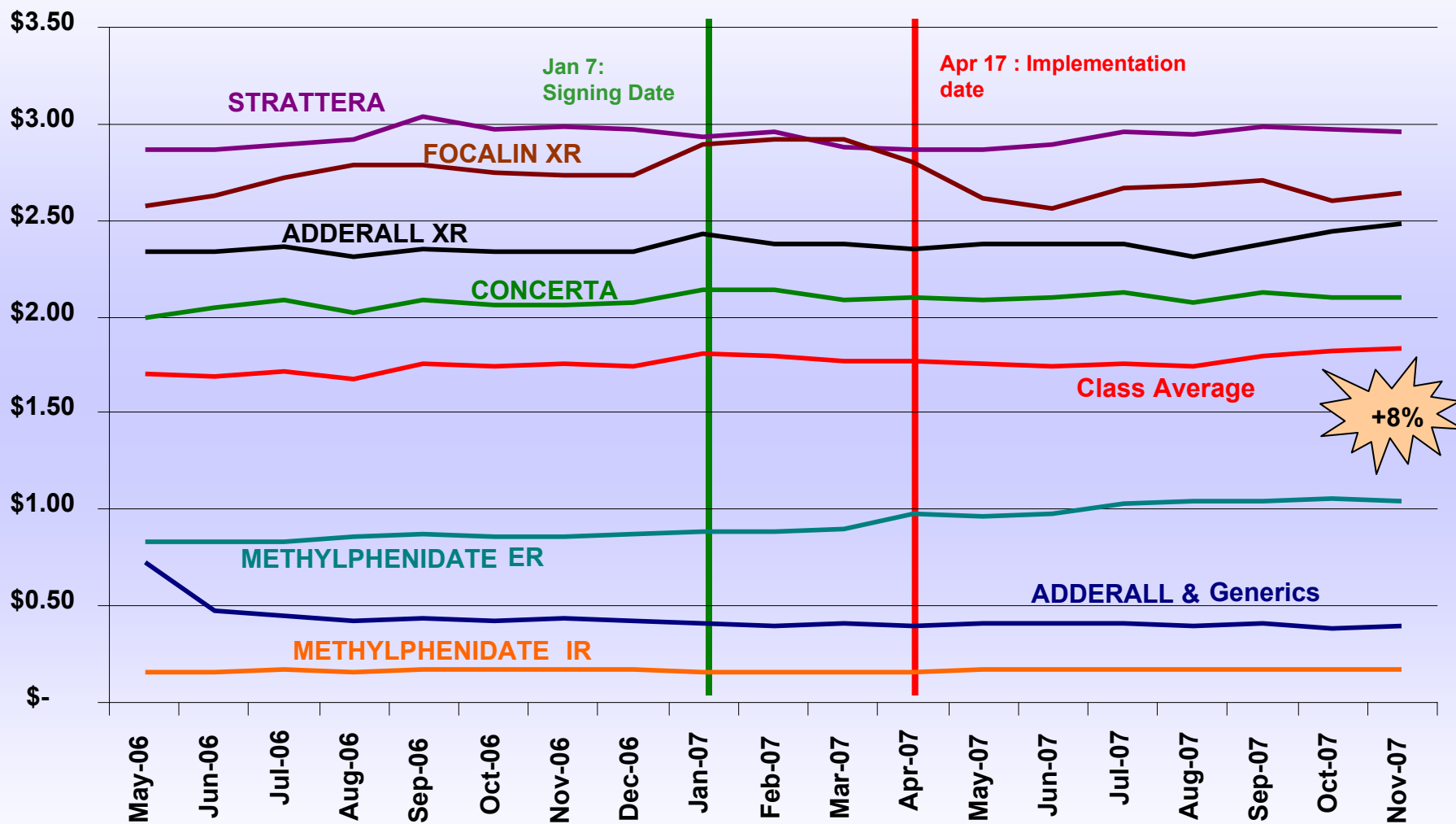
All drugs



ADHD Utilization – All POS 30 day Equivalents

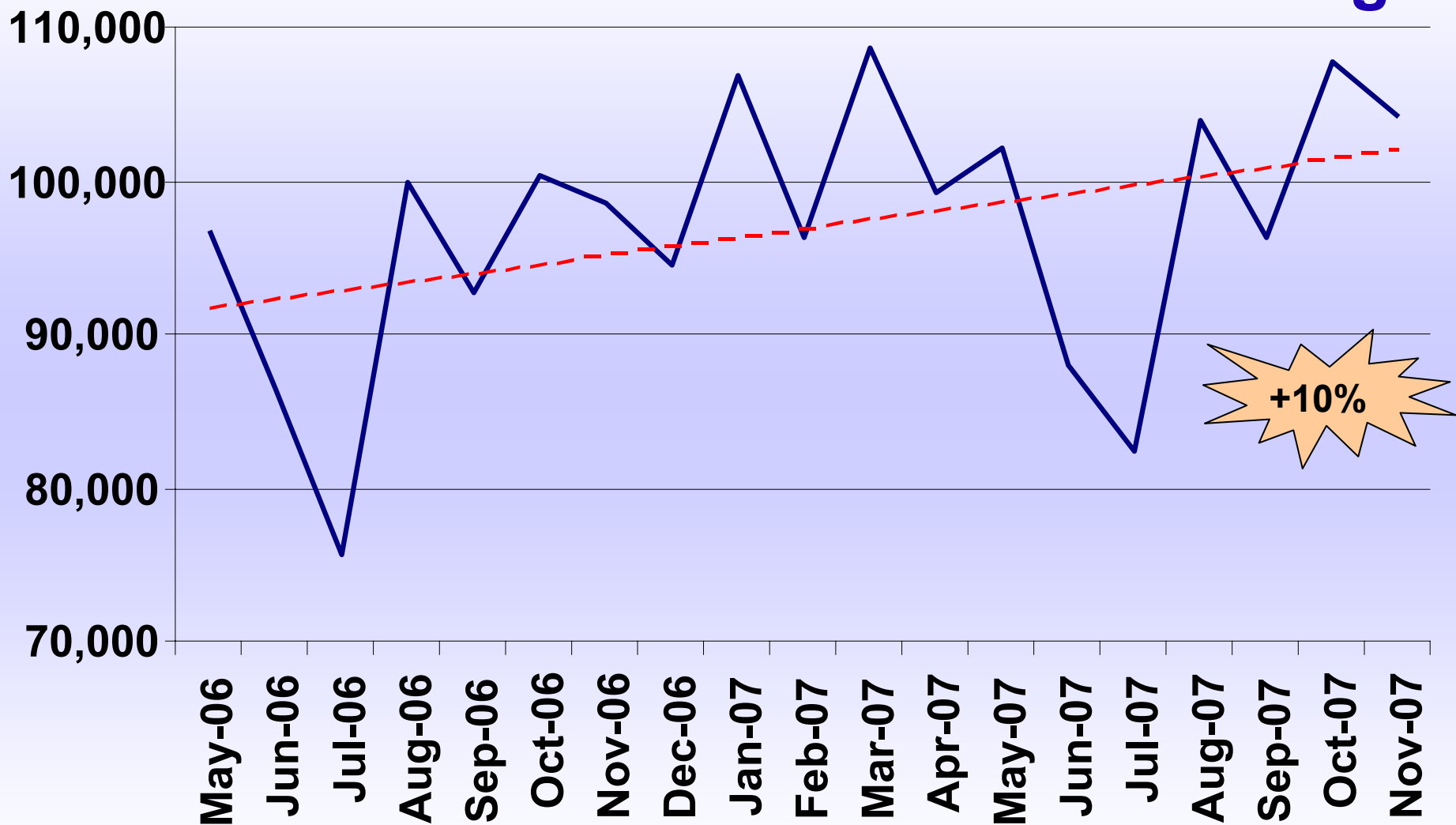


ADHD Ave Cost/Day – All POS



ADHD 30d Equiv trend - All POS

All drugs



+10%



Caveats

- Limited number of classes
- 18 month time frame
 - Conservative estimates
- VARR savings not included
 - Conservative estimates



Conclusions

- **Significant savings with aggressive formulary management**
- **Growth in utilization of each class**
 - **Formulary management techniques don't appear to be inhibiting use of benefit**
- **Step therapy is guiding utilization to most desired drug product**
- **Medical requirements and class makeup may prevent significant savings**



Questions?

