



Joint Pathology Center



Concept of Operations and Implementation Plan

Presented to the Defense Health Board
by the

Joint Task Force National Capital Area Medical

5 Sept 2008



Purpose of Brief

- To provide the Defense Health Board (DHB) the DoD Implementation Plan for the Joint Pathology Center (JPC) for review
- To request an opinion on the appropriateness and feasibility of the plan for DoD
- To request an opinion and recommendations regarding concept of operations for the Joint Task Force



Background

- BRAC 2005 disestablished the Armed Forces Institute of Pathology
- NDAA 2008 directed the President to establish a Joint Pathology Center (JPC)
- An ASD(HA) Joint Pathology Center Working Group (JPCWG) was chartered to review courses of action
- JPCWG endorsed and ASD(HA) selected the Joint Task Force National Capital Region Medical (JTF CAPMED) proposal

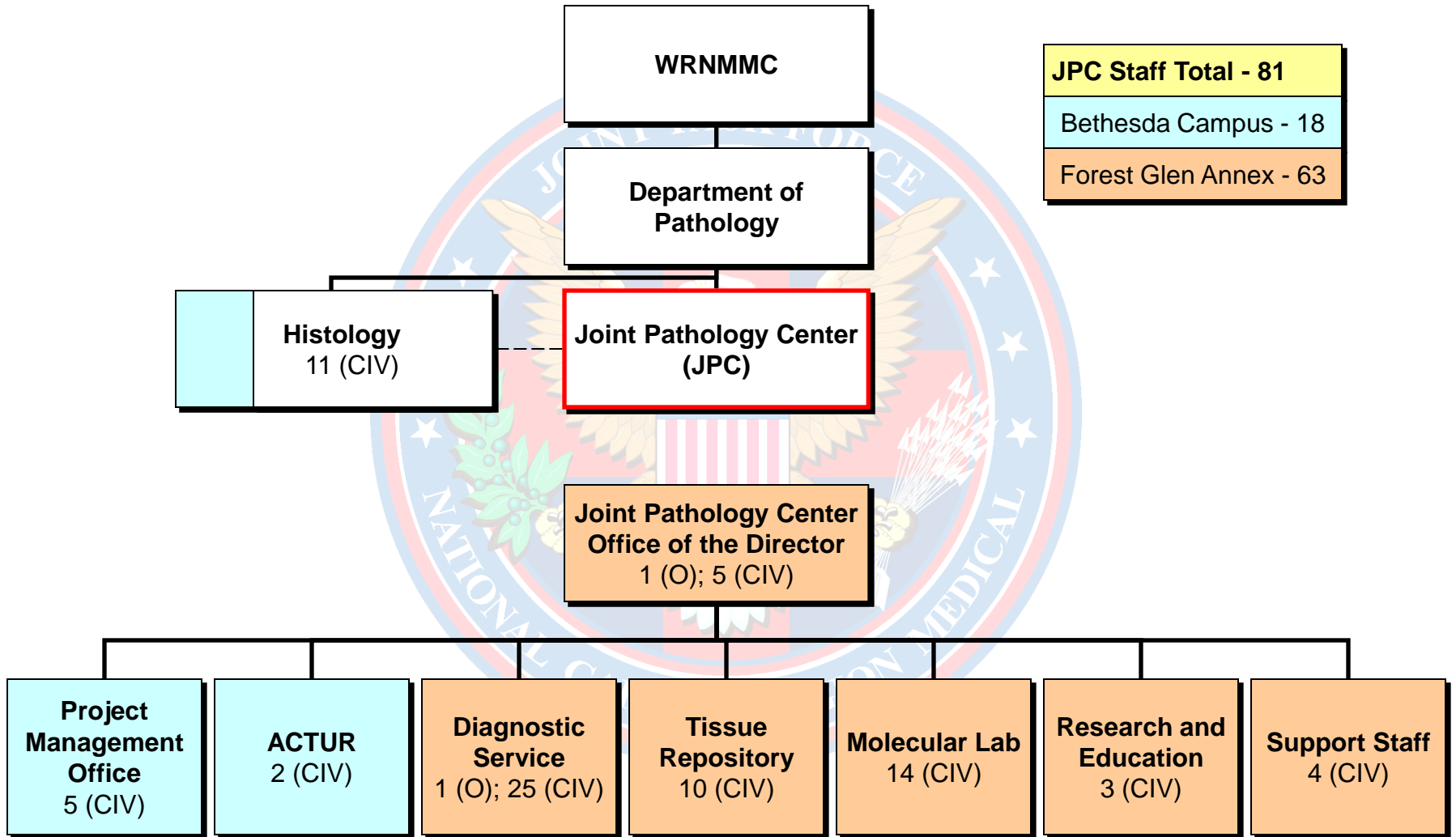


Vision and Mission

- Vision
 - The JPC is the Federal Government's premier pathology reference center supporting the MHS, DoD and other federal agencies
- Mission
 - The JPC will provide world class diagnostic subspecialty pathology consultation, education, training, research and maintenance/modernization of the tissue repository in support of the mission of the DoD and other federal agencies



Organizational Structure





Major Functions

- Provide subspecialty pathology services
- Employ state-of-the-art interpretive technology
- Operate a Program Management Office (PMO)
- Provide Veterinary & Oral Pathology Consultative Services
- Operate the world-renowned Tissue Repository
- Enhance military medical Education, Training and Research



Joint Pathology Center



- Personnel Requirements: 81 (2 Mil; 79 Civ)
- Personnel Authorizations: 81 (2 Mil; 79 Civ)
- Workload: 23,900 cases per year
- Facility Requirements:
 - Bethesda Campus (1,000 sq ft)
 - Forest Glen Annex (42,000 sq ft)
- Equipment and Initial start-up costs: \$2.9M (estimate)
- Annual Operating Expenses: \$14M (estimate)



Key Assumptions

- Programmed funding through the DHP
- Veterans Administration continues historical level of financial support
- AFIP equipment will be available for reuse by JPC
- Efficiencies gained through consolidation of resources with WRNMMC
- Collaboration with other federal agencies for education and research will be initiated



Way Ahead

- Gain approval for concept of operations; develop implementation plan; refine program requirements
- Ensure strategic communications with stakeholders
- Complete facilities renovation
- Finalize equipment acquisition strategy
- Align Civilian Personnel System (CPS) IAW the WRNMMC and JTF CAPMED CPS
- Synchronize transition with WRAMC & NCR BRAC transition



Questions?





Backup slides





Projected Workload

Estimated Workload for the Joint Pathology Center

Total cases	23,900 cases per year
Paraffin blocks cut	140,418 blocks per year
Hematoxylin and Eosin slides	57,792 slides per year
Immunoperoxidase stains	75,729 slides per year
Special stains	26,348 slides per year
Total slides per year	159,959 slides per year (not including negative controls)
Molecular Pathology	4,000 tests per year



Staffing



Personnel	Staff Number
Pathologists	23
Chief	1
Laboratory manager	1
Histology techs	7
Information techs	2
Quality Assurance	1
PMO	5
Secretary	1
Transcription	4
Molecular Lab	14
Telepathology	3
Repository	10
Education	2
Research	1
Automated Central Tumor Registry	2
Transport/courier	4
Total	81