

CY 2019 Cosmetic Surgery and Cosmetic Surgery Estimator (v15)

Presented by Alex Ames
DHA UBO Program Office Contract Support

23 July 2019 0800 – 0900
25 July 2019 1400 – 1500

For entry into the webinar, log into https://federaladvisory.adobeconnect.com/ubo_webinar/.

Enter as a guest with your full name and Service or NCR MD affiliation for attendance verification.

Instructions for CEU credit are at the end of this presentation.

View and listen to the webinar through your computer or Web-enabled mobile device. Note: The DHA UBO Program Office is not responsible for and does not reimburse any airtime, data, roaming or other charges for mobile, wireless and any other internet connections and use.

If you need technical assistance with this webinar, contact us at UBO.LearningCenter@federaladvisory.com.

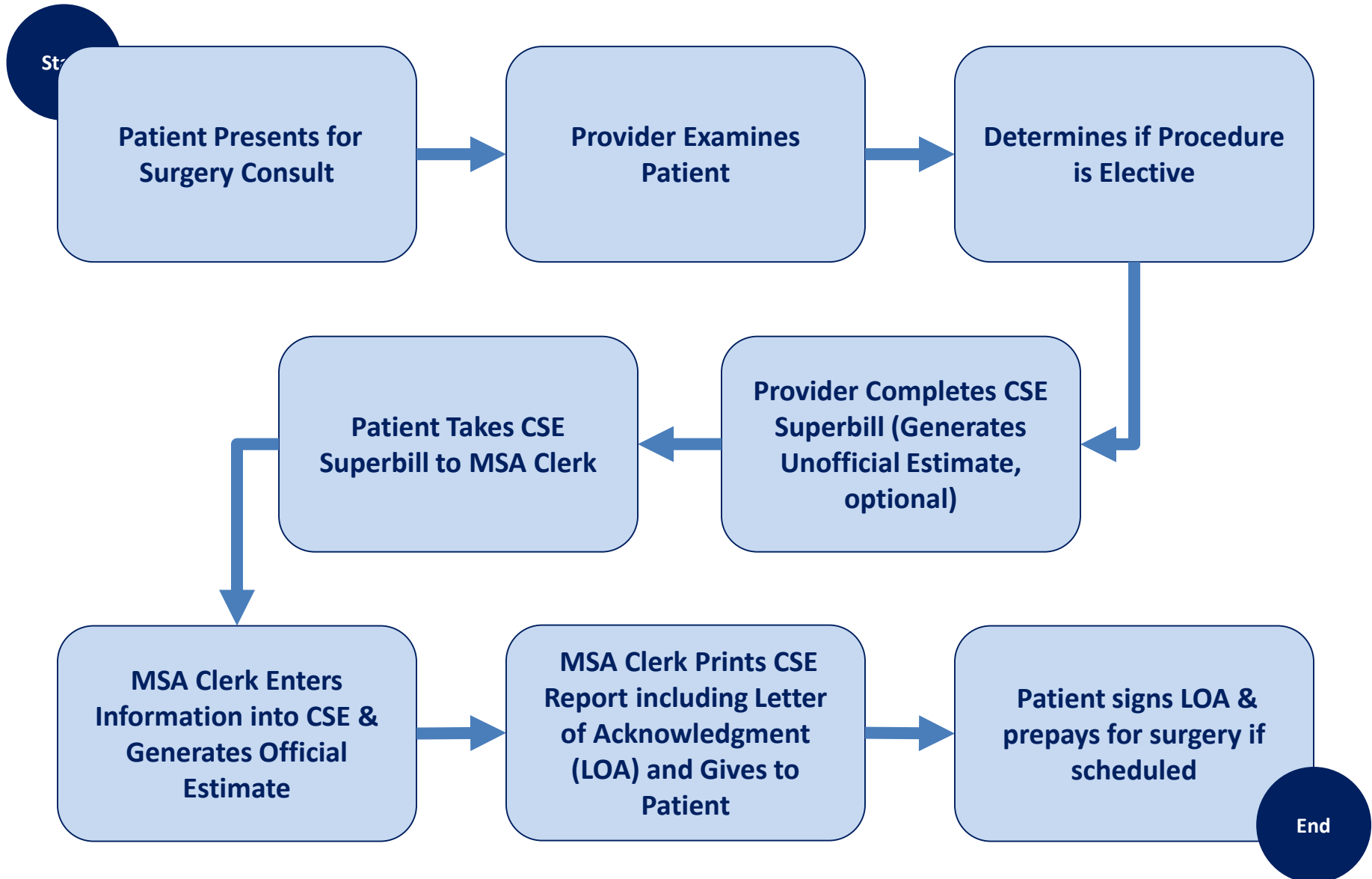
You may submit a question or request technical assistance at any during a live broadcast time by entering it into the “Question” field of Adobe Connect.

- Background
- CSE v15 Procedure Additions, Modifications, Deletions & Rate Methodology Update
- CSE v15 Functionality
- CSE v15 Practice Scenario
- CSE v15 Distribution & Effective Date
- Questions & Answers

Background

- Per HA Policy 05-020, “Policy for Cosmetic Surgery Procedures in the Military Health System” (25 Oct 2005):
 - Cosmetic Surgery – “Any **elective** plastic surgery performed to **reshape normal structures** of the body **in order to improve the patient’s appearance or self-esteem.**”
 - Reconstructive Surgery – “Any plastic surgery performed on **abnormal structures** of the body which are caused by congenital defects, developmental abnormalities, trauma, infection, tumors, or disease. Reconstructive surgery is **generally performed to improve function** but may also be done to approximate a normal appearance.”

- Elective cosmetic surgery is not a TRICARE covered benefit.
- ***However***, DoD Health Affairs Policy 05-020 authorizes elective cosmetic surgery in military treatment facilities (MTFs) to “support graduate medical education, board eligibility and certification, and skill maintenance for certified specialists.”
- Services are provided on a “space available” basis and limited to:
 - TRICARE-eligible beneficiaries (including TRICARE for Life) who will not lose eligibility for at least 6 months.
 - Active duty personnel who have written permission from their unit commander.
- **All patients** are fully responsible for surgical fees, applicable institutional and anesthesia charges, as well as the cost of all implants, cosmetic injectables, and other separately billable items associated with elective cosmetic procedures. Patients may also be responsible for follow up care.





• LOA updated and incorporated into CSE cost report

Date of Estimate: 7/10/2019 9:39:33 AM
 Procedure Location: Provider's Office
 Military Treatment Facility (MTF): CSE Test
 Combined with a Medically Necessary Procedure: No

CPT®/Procedure Code	Description	Bilateral	Qty	Cost
11950	Subcutaneous injection of filling material, 1 cc or less -- with no pharmaceuticals This procedure has a 0 day global period.	N/A	1	\$70.28

Anesthesia Type: Moderate Sedation Anesthesia Cost: \$84.33
 Implants/Supplies: None Implant/Supply Cost: \$0.00

Combined with a Medically Necessary Procedure Discount: \$0.00

TOTAL COST: \$154.61

1) Advance Payment Required: Elective cosmetic procedures are not TRICARE covered benefits. I acknowledge and accept responsibility for all charges associated with the above listed procedure(s) including applicable professional, facility, and anesthesia fees plus the cost of any implants, pharmaceuticals, and other separately billable items provided by the MTF. I

6) Follow-up Care: I acknowledge that follow-up care after an elective cosmetic procedure is not guaranteed in an MTF because the care required may exceed the ability of the facility and/or there may not be appointments available when I need to be seen. Additionally, I understand that care for complications resulting from an elective cosmetic procedure is not a TRICARE covered benefit, and I may be financially responsible for such care whether I am treated at an MTF or an outside medical facility. If the complication occurs in the same body system or the same anatomical area of the non-covered treatment and the complication is one that commonly occurs (e.g., repair of facial scarring resulting from dermabrasion for acne), then the corresponding care is not a covered benefit. As stated in 32 CFR 199.4(e)(9) and TRICARE Policy Manual, Chapter 4, Section 1.1, Complications (Unfortunate Sequelae) Resulting from Non-Covered Surgery or Treatment: "Benefits are available for the otherwise covered treatment of complications resulting from a non-covered [elective cosmetic] surgery or treatment only when the complication represents a medical condition separate from the condition that the non-covered treatment or surgery was directed toward, and treatment of the complication is not essentially similar to the non-covered procedure. A complication may be considered a separate medical condition and thus is a covered benefit when it causes a systemic effect, occurs in a different body system from the non-covered treatment, or is an unexpected complication which is untoward based upon prior clinical experience with the procedure."

Providers exclusively determine medical necessity of treatment; only medically necessary procedures are covered for TRICARE beneficiaries.

PATIENT'S SIGNATURE

WITNESS SIGNATURE

DATE

DATE

v15.0 (0516a) Page 1 of 1

1) Advance Payment Required

Estimated charges must be paid, in full, prior to receiving treatment.

2) Prices Subject to Change

Rates are not guaranteed until estimated charges have been paid in full.

3) Additional Charges May Apply

There may be additional charges for ancillary services, as well as unforeseen, but necessary, procedures undertaken during the procedure.

4) Global Periods

Postoperative visits that are unrelated to the original procedure, or that occur after the global period has expired, will incur additional charges.

5) Refunds

Refunds are processed for procedures not performed.

6) Follow-up Care

Follow-up care is not guaranteed in an MTF and in accordance with TPM Chapter 4, Section 1.1, complications of cosmetic surgery procedures are excluded from coverage.

- The DHA UBO Program Office is responsible for providing current rates for elective cosmetic procedures in the Military Health System (MHS).
- The DHA UBO Cosmetic Surgery Estimator (CSE) calculates charges for elective cosmetic procedures.
 - Factors in all potential procedure costs, including professional, facility, anesthesia professional fees, and the cost of implants and pharmaceuticals.
- Rates used in the CSE are updated annually and are based on what TRICARE will allow.
- Released and effective on July 1, 2019 for CY19 CSE.
 - **NOTE: New version (0716a) released July 16th, 2019.**

CSE v15 Procedure Additions, Modifications, Deletions & Rate Methodology Update

- Only procedures included in CSE can potentially be performed as elective cosmetic procedures
 - Procedures may be performed as medically necessary if documented as such
 - Medically necessary procedures are not priced in the CSE
- Many procedures added to CSE because of feedback from the field
 - If you have any suggested elective cosmetic procedures, contact the DHA UBO Helpdesk at ubo.helpdesk@altarum.org
 - DHA review and approval necessary



- **New CSE codes and Textual Edits:**
- New Code: 11920 (Tattooing code) “Tattooing, intradermal introduction of insoluble opaque pigments to correct color defects of skin, including micropigmentation, 6.0 sq cm or less”.
- Textual edits:
 - Change abbreviation for bilateral from “Bi” to “Bil”.
 - Code 17380, removed the word “preceding” in description.

Professional Fees

+

Facility Fees

+

Anesthesia Fees

+

Cost of Implants & Pharmaceuticals

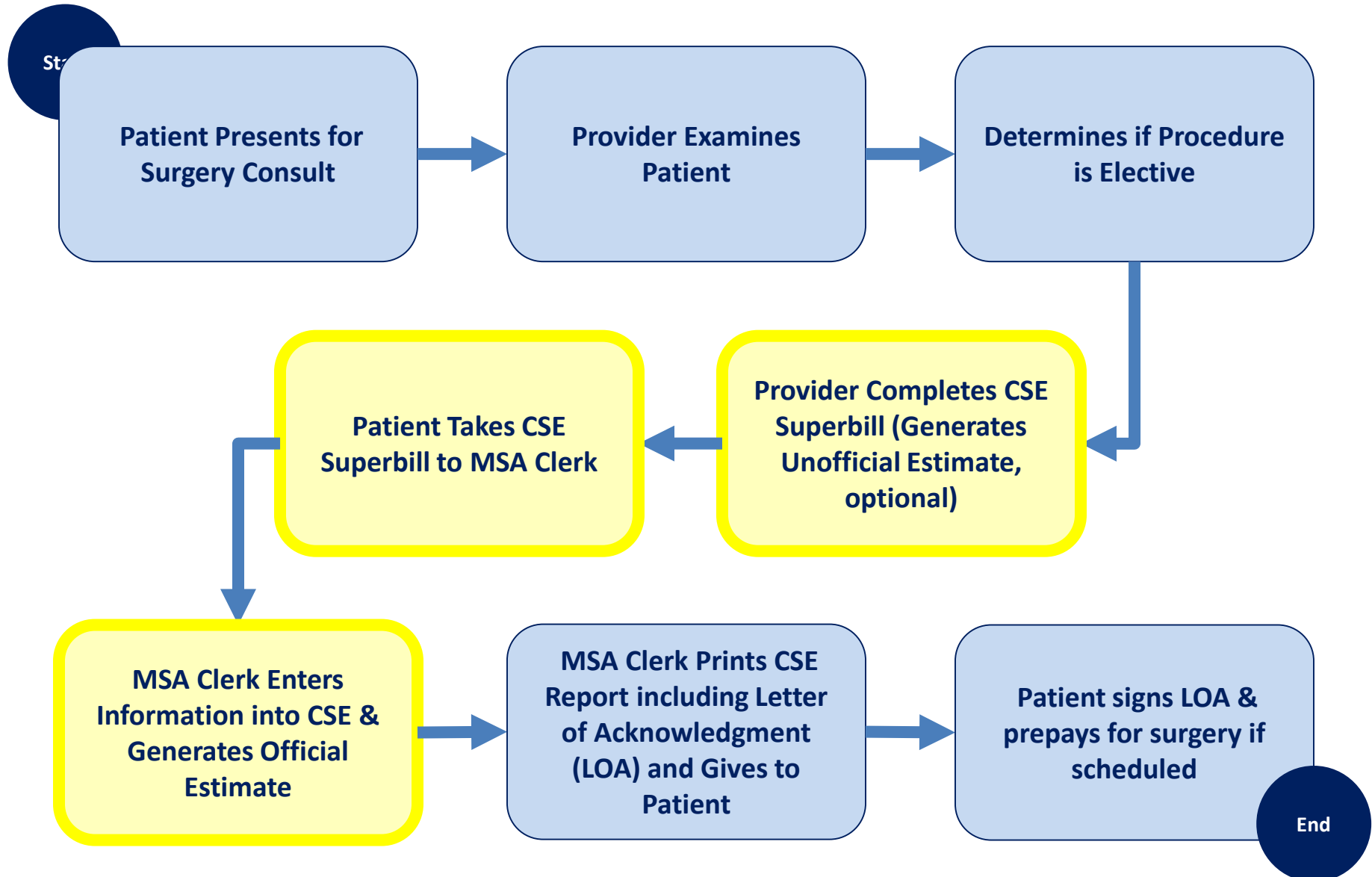
(e.g., Breast Implants, Chin Implants, Botox[®], Restylane[®])

=TOTAL COST

- CSE v15 contains two types of rates for the institutional cost of a procedure performed in an outpatient setting:
 - Ambulatory Payment Classification (APCs)
 - Used for bedded facilities (Hospitals)
 - Ambulatory Surgical Center (ASCs)
 - Used for non-bedded facilities (Clinics)
- The rates used are determined by DMIS ID
- For some procedures, the cost of the device is included in the APC charge
 - This applies to 9 CSE procedures: *19325, 19342, 19357, 17999-Y2189, 17999-5835, 17999-5837, 65760, 65765, and 65767*
 - When generating estimates for these procedures, do not charge for additional devices or implants

- Pharmaceutical prices pre-populated for: Botox[®], Dysport[®], and Xeomin[®]
 - Botox[®] CY19 TRICARE Allowable Price: **\$6.12/unit** (was \$6.15 in CY18)
 - Dysport[®] CY19 TRICARE Allowable Price: **\$1.68/unit** (was 1.65/unit in CY18)
 - Xeomin[®] CY19 TRICARE Allowable Price: **\$5.09/unit** (was \$5.08 in CY18)
- Ability to override the pre-populated prices if the local MTF pharmacy provides a price for the pharmaceutical
- Unit price needs to be populated for fillers/injectables based on MTF's cost
- Field for input of chemodenervation pharmaceutical units to allow for more than 50

CSE v15 Functionality





Cosmetic Surgery Superbill 2019

INSTRUCTIONS: (1) Fill in top of form. (2) Circle or highlight Procedure Description. (3) Check Bilateral column. (4) Enter the quantity of each procedure.

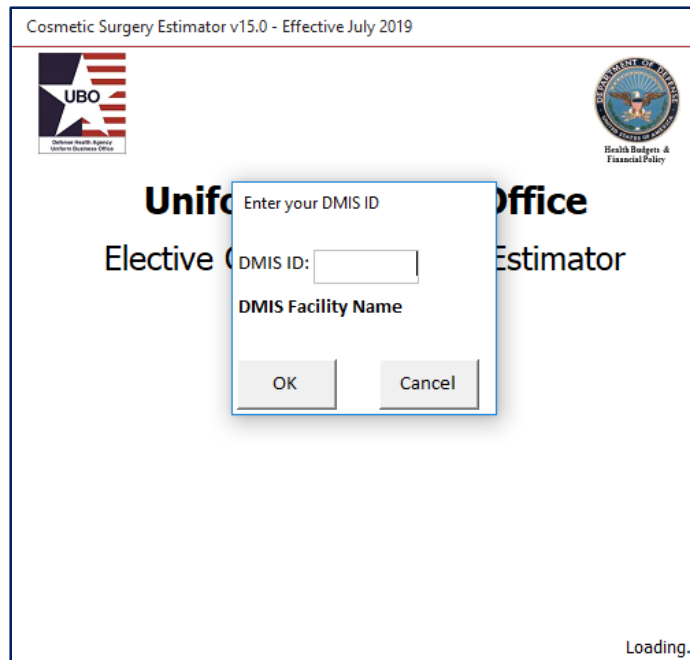
MTF: ★	Patient Name: ★
Provider's Name and Phone:	Visit Date: ★ / / Surgery Date: / /
ICD-10 Code 1: Z41.1 Cosmetic Surgery Encounter ICD-10 Code 2:	Anesthesia: <input type="checkbox"/> Local
Location: <input type="checkbox"/> Provider's Office <input type="checkbox"/> Operating Room Inpatient	<input type="checkbox"/> Monitored/General Anesthesia Care ★ <input type="checkbox"/> Topical Block
<input type="checkbox"/> Operating Room Outpatient	<input type="checkbox"/> Moderate Sedation <input type="checkbox"/> None

Will this procedure be combined with a medically necessary procedure? Yes No

Procedure Description	Code	Bil	Qty	Procedure Description	Code	Bil	Qty	Procedure Description	Code	Bil	Qty
SKIN TAG REMOVAL				BREAST / CHEST AUGMENTATION				INJECTIONS			
Removal of skin tags, up to 15 lesions	11200			Mastectomy for Gynecomastia (Male)	19300			Intralesional Injection			
Removal of skin tags, ea addl 1-10 lesions	11201 +			Mastopexy (Breast Lift)	19316			Intralesional Injection; 7 or less	11900		
LESION REMOVAL				Mammoplasty; reduction	19318			Intralesional Injection; 8 or more	11901		
Shaving of Epidermal or Dermal Lesions (single lesion)				Mammoplasty; augmentation w/o implant	19324			Subcutaneous Injection of Filling Material			
Trunk, arms or legs				Mammoplasty; augmentation w/implant	19325			1.0 cc or less	11950		
<= 0.5 cm lesion diameter	11300			Removal of intact mammary implant	19328			1.1 - 5.0 cc	11951		
0.6 to 1.0 cm lesion diameter	11301			Removal of implant material	19330			5.1 - 10.0 cc	11952		
1.1 to 2.0 cm lesion diameter	11302			Immediate insertion of implant	19340			More than 10.0 cc	11954		
> 2.0 cm lesion diameter	11303			Delayed insertion of implant	19342			Soft Tissue Fillers (Enter a pharmaceutical, price per unit and quantity)			
Scalp, neck, hands, feet, genitalia				Nipple / areola reconstruction	19350			Name	Price	Qty	
≤ 0.5 cm lesion diameter	11305			Correction of inverted nipples	19355						
0.6 to 1.0 cm lesion diameter	11306			Breast reconstr; immed / delayed	19357						
1.1 to 2.0 cm lesion diameter	11307			Open periprosthetic capsulotomy; breast	19370			SKIN RESURFACING			
> 2.0 cm lesion diameter	11308			Periprosthetic capsulotomy; breast	19371			Dermabrasion			
Face, ears, eyelids, nose, lips, mucous membrane				Revision of reconstructed breast	19380			Total face	15780		

INSTRUCTIONS: Circle/highlight **Procedure Description**; check **Bilateral (Bil)** column; and enter the **Quantity (Qty)** of each procedure.

- Users required to input DMIS ID:
 - To download CSE files from <http://ubocse.org>
 - To use CSE v15
 - Only users from facilities that have indicated they allow/perform cosmetic procedures can access CSE.
 - Submit requests to DHA UBO for access: ubo.helpdesk@altarum.org



Cosmetic Surgery Estimator v15.0 - Effective July 2019

UBO
Defense Health Agency
Uniform Business Office

DEPARTMENT OF DEFENSE
Health Budgets & Financial Policy

Uniform Business Office
Elective Cosmetic Surgery Estimator

Enter your DMIS ID


DMIS ID:

DMIS Facility Name

OK Cancel

Loading...

- New in CSE v15: Provider Access to CSE
 - MSA staff provide to providers upon request
 - MSA staff enter DMIS ID, then password supplied by DHA UBO
 - Providers enter “PROV” when prompted for DMIS ID, no password required
 - Estimates generated by Provider clearly marked
 - Official cost estimate must be generated by MSA Office
 - Note: Provider access continues with all subsequent versions



Elective Cosmetic Surgery Cost Estimate

****For Discussion Purposes Only****

[Print](#)

Note to the Patient: This estimate was generated by your provider for discussion purposes only. Official cosmetic surgery estimates must be generated by the MSA office. If you would like to schedule a cosmetic procedure, please take the Cosmetic Surgery Superbill supplied by your provider to the MSA office. You must pay in full and provide proof of payment before the clinic can schedule your procedure. Please see below for other important patient information.

Patient Name: No Name Entered
Date of Estimate: 7/10/2019 10:06:32 AM
Procedure Location: Provider's Office
Military Treatment Facility (MTF): CSE Provider Mode
Combined with a Medically Necessary Procedure: No



Section 1:
Enter a Primary Procedure

Section 2:
Costs are automatically calculated

Section 3:
•Edit Estimate Entries
•View, Print, Save a Cost Report

Cosmet... Provider Mode - Cosmetic Surgery Estimator

DHA UBO Cosmetic Surgery Estimator v15.0

* = Required

CPT@/Procedure Glossary		Cost Rank: 19
Code	Description	
1* Primary CPT@/Procedure:		Professional Fee: \$0.00
2* Procedure Location: <input type="radio"/> Provider's Office <input type="radio"/> OR/Outpatient (APV) <input type="radio"/> OR/Inpatient		Facility Fee: \$0.00
3* Will this procedure be combined with a medically necessary procedure? <input type="radio"/> Yes <input type="radio"/> No		Medically Necessary Discount: \$0.00
4 Will this procedure be performed by a dermatology resident? N/A		Resident Discount: \$0.00
5 Will this procedure be bilateral? N/A		Bilateral Cost: \$0.00
6 Quantity/Number of Sessions: N/A		Additional Quantity/Session Cost: \$0.00
7 Add-on Code: N/A		Add-on Cost: \$0.00
8* Anesthesia: <input type="radio"/> None <input type="radio"/> Topical <input type="radio"/> Local <input type="radio"/> Moderate Sedation <input type="radio"/> General/Monitored		Anesthesia Fee: \$0.00
9 What pharmaceuticals will be provided by the MTF: N/A		Pharmaceutical Cost: \$0.00
10* Will additional elective procedures be performed during the same visit? <input type="radio"/> Yes <input type="radio"/> No		Additional Procedure Cost: \$0.00
11* Will implants or other non-covered supplies be provided by the MTF? <input type="radio"/> Yes <input type="radio"/> No		Implant/Supply Cost: \$0.00
		Total Cost: \$0.00

View/Edit Additional Procedures View/Edit Implants and Supplies

Clear Estimate View/Print Cost Report Save Cost Report Exit Estimator

CPT® is a registered trademark of the American Medical Association. Procedure codes designated as 17999-XXXX are developed by the DoD DHA UBO and are not intended to serve as CPT® codes.



Section 1: Additional Procedure Entry Form

Cosmetic Surgery Estimator v15

* = Required Field

Additional Procedures Press F1 for Help

CPT®/Procedure Glossary

Code	Description	
1* Additional CPT®/Procedure:		Professional Fee + Facility Fee: \$0.00
2 Will this procedure be performed by a dermatology resident? N/A		Resident Discount: \$0.00
3 Will this procedure be bilateral? N/A		Bilateral Cost: \$0.00
4 Quantity/Number of Sessions: N/A		Additional Quantity/Session Cost: \$0.00
5 Anesthesia: <input checked="" type="radio"/> None <input type="radio"/> Topical <input type="radio"/> Local <input type="radio"/> Moderate Sedation <input type="radio"/> General/Monitored		Anesthesia Fee: \$0.00
6 What pharmaceuticals will be provided by the MTF: N/A		Pharmaceutical Cost: \$0.00

Total Cost: \$0.00

Add Procedure

CPT Code	CPT Description	Qty	Pro Fee	Facility Fee	Bilat Fee	Anest. Fee	Pharm	Pharm Fee	Total Cost
----------	-----------------	-----	---------	--------------	-----------	------------	-------	-----------	------------

Section 2: List of Additional Procedures Added to the Estimate

Total Additional Procedures Cost: \$0.00

Clear List

Return to Estimate

Line 1: Primary Procedure

DHA UBO Cosmetic Surgery Estimator v15.0				Press F1 for Help
CPT®/Procedure Glossary				Cost Rank: NA
* Required Field	Code	Description	Professional Fee	
1*	Primary CPT®/Procedure:			\$0.00
2*	Procedure Location:			\$0.00
3*	Will this procedure:			\$0.00
4	Will this procedure:			\$0.00
5	Will this procedure:			\$0.00
6	Quantity/Number:			\$0.00
7	Add on Code:			\$0.00

Selecting a Primary Procedure

Price estimates for elective cosmetic surgery depend on the procedure(s) chosen. To begin, select a primary procedure from one of the two drop-down menus available on Line 1. You can search for a procedure by:

- CPT®/Procedure Code (listed in numerical order), or
- CPT®/Procedure Description (listed in alphabetical order).

NOTE: The professional fee for an elective cosmetic procedure is based on both the procedure chosen and the location of service. Therefore, the professional fee for the primary procedure will only be populated in the cost column after both the primary procedure (Line 1) and procedure location (Line 2) are selected.

Line 1: Primary Procedure is a required field for all elective cosmetic procedure estimates. You will not be able to view, print, or save a CSE cost estimate report until a selection has been made for all required fields. Required fields are marked with an asterisk (*) next to the line number. Once a selection has been made, the asterisk will disappear. You may change your selection(s) at any time prior to generating the estimate.

CSE Superbill: CPT®/Procedure Codes and Descriptions

The DHA Elective Cosmetic Surgery Superbill ("Superbill") is a two-page document that lists CPT®/Procedure codes for all elective cosmetic procedures available in the MHS. The Superbill is completed by the provider and used by Medical Services Account (MSA) staff to enter data into the CSE to generate a cost estimate. The Superbill is prepared and distributed by the DHA UBO Program Office with each version of the CSE. Use of alternate Superbills is not authorized. The Superbill contains all required information to generate a complete cost estimate for elective cosmetic procedures.

SKIN RESURFACING			
Dermabrasion			
Total face	15180		
Segment, facial	15181		
Regions, non-facial	15182		
Superficial, any site (e.g. tattoo removal)	15183		
Abrasion, single lesion	15186		
Abrasion, each add 1-4 lesions	15187 *		

Refer to Appendix B for a full view of the DHA UBO Cosmetic Surgery Superbill.

- Guide provides line-by-line “how-to” instructions
- Available as a PDF and as the Help function in the CSE
 - Press F1 in the CSE to access the User Guide
- Includes quick reference tables that summarize various categories of procedures
- Added a list of cost ranks to Appendix of User Guide

CSE v15 Practice Scenario



- Example: A patient is having three (3) 0.3cm trunk lesions removed (CPT® 11300). A patient is also scheduled to have 28 skin tags removed (CPT® 11200 and 11201). The procedures will be performed in a provider's office setting with local anesthesia.

Cosmetic Surgery Superbill 2019

INSTRUCTIONS:(1) Fill in top of form.(2) Circle or highlight Procedure Description. (3) Check Bilateral column. (4) Enter the quantity

MTF:	Patient Name:
Provider's Name and Phone:	Visit Date: / /
ICD-10 Code 1: Z41.1 Cosmetic Surgery Encounter ICD-10 Code 2:	Anesthesia:
Location: <input type="checkbox"/> Provider's Office <input type="checkbox"/> Operating Room Inpatient	<input type="checkbox"/> Monitored/General
<input type="checkbox"/> Operating Room Outpatient	<input type="checkbox"/> Moderate Sedation

Will this procedure be combined with a medically necessary procedure?

Procedure Description	Code	Bil	Qty	Procedure Description	Code	Bil	Qty
SKIN TAG REMOVAL				BREAST / CHEST AUGMENTATION			
Removal of skin tags, up to 15 lesions	11200			Mastectomy for Gynecomastia (Male)	19300		
Removal of skin tags, ea addl 1-10 lesions	11201 +			Mastopexy (Breast Lift)	19316		
LESION REMOVAL				Mammoplasty; reduction	19318		
Shaving of Epidermal or Dermal Lesions (single lesion)				Mammoplasty; augmentation w/o implant	19324		
Trunk, arms or legs				Mammoplasty; augmentation w/implant	19325		
<= 0.5 cm lesion diameter	11300			Removal of intact mammary implant	19328		
0.6 to 1.0 cm lesion diameter	11301			Removal of implant material	19330		
1.1 to 2.0 cm lesion diameter	11302			Immediate insertion of implant	19340		

		CPT®/Procedure Glossary	
	<u>Code</u>	<u>Description</u>	
1 Primary CPT®/Procedure:	11300	Shaving of epidermal or dermal lesion, single lesion, trunk, arms or legs, lesion diameter 0.5 cm or less	Line 1
2 Procedure Location:	<input checked="" type="radio"/> Provider's Office <input type="radio"/> OR/Outpatient (APV) <input type="radio"/> OR/Inpatient		Line 2
3 Will this procedure be combined with a medically necessary procedure?	<input type="radio"/> Yes <input checked="" type="radio"/> No		Line 3
4 Will this procedure be performed by a dermatology resident?	N/A		Lines 4 & 5
5 Will this procedure be bilateral?	N/A		
6 Quantity:	3		Line 6
7 Add-on Code:	N/A		Line 7
8 Anesthesia:	<input type="radio"/> None <input type="radio"/> Topical <input checked="" type="radio"/> Local <input type="radio"/> Moderate Sedation <input type="radio"/> General/Monitored		Line 8
9 What pharmaceuticals will be provided by the MTF:	N/A		Line 9
10* Will additional elective procedures be performed during the same visit?	<input checked="" type="radio"/> Yes <input type="radio"/> No		Line 10
11 Will implants or other non-covered supplies be provided by the MTF?	<input type="radio"/> Yes <input checked="" type="radio"/> No		Line 11



Cosmetic Surgery Estimator v15.0 - Effective July 2019 (1916x1013) - Provider Mode - Cosmetic Surgery Estimator

Press F1 for Help

Additional Procedures

* = Required Field

CPT®/Procedure Glossary

1* Additional CPT®/Procedure: Line 1

2 Will this procedure be performed by a dermatology resident? N/A Line 2

3 Will this procedure be bilateral? N/A Lines 3 & 4

4 Quantity/Number of Sessions: N/A

5 Anesthesia: None Topical Local Moderate Sedation General/Monitored Line 5

6 What pharmaceuticals will be provided by the MTF: N/A Line 6

Professional Fee + Facility Fee: \$0.00
Resident Discount: \$0.00
Bilateral Cost: \$0.00
Additional Quantity/Session Cost: \$0.00
Anesthesia Fee: \$0.00
Pharmaceutical Cost: \$0.00

Total Cost: \$0.00

Add Procedure

CPT Code	CPT Description	Qty	Pro Fee	Facility Fee	Blat Fee	Anest. Fee	Pharm	Pharm Fee	Total Cost	Edit	Delete
11200	Removal of skin tags, multiple fibrocuteaneous tags, any area, up to and including 15 lesions	1	\$45.23	\$0.00	\$0.00	\$0.00		\$0.00	\$45.23	Edit	Delete
11201	Removal of skin tags, multiple fibrocuteaneous tags, any area, each additional 10 lesions, or part thereof	2	\$19.46	\$0.00	\$0.00	\$0.00		\$0.00	\$38.92	Edit	Delete

Total Additional Procedures Cost: \$84.15

Clear List

Return to Estimate



Press F1 for Help

Cost Rank: 24

Professional Fee:	\$99.83
Facility Fee:	\$0.00
Medically Necessary Discount:	\$0.00
Resident Discount:	\$0.00
Bilateral Cost:	\$0.00
Additional Quantity Cost:	\$99.83
Add-on Cost:	\$0.00
Anesthesia Fee:	\$0.00
Pharmaceutical Cost:	\$0.00
Additional Procedure Cost:	\$84.15
Implant/Supply Cost:	\$0.00

Total Cost: \$283.81

Patient Name: TEST123

Date of Estimate: 7/10/2019 10:54:18 AM

Procedure Location: Provider's Office

Military Treatment Facility (MTF): CSE Provider Mode

Combined with a Medically Necessary Procedure: No

CPT®/Procedure Code	Description	Bilateral	Qty	Cost
11300	Shaving of epidermal or dermal lesion, single lesion, trunk, arms or legs, lesion diameter 0.5 cm or less This procedure has a 0 day global period.	N/A	3	\$199.66
11200	Removal of skin tags, multiple fibrocutaneous tags, any area, up to and including 15 lesions This procedure has a 10 day global period.	N/A	1	\$45.23
11201	Removal of skin tags, multiple fibrocutaneous tags, any area, each additional 10 lesions, or part thereof This procedure has a 10 day global period.	N/A	2	\$38.92

Anesthesia Type: Local

Anesthesia Cost: \$0.00

Implants/Supplies: None

Implant/Supply Cost: \$0.00

Combined with a Medically Necessary Procedure Discount:

\$0.00

TOTAL COST: \$283.81

All patients undergoing cosmetic procedures must sign a Letter of Acknowledgement that states the following:

procedure. A complication may be considered a separate medical condition and thus is a covered benefit when it causes a systemic effect, occurs in a different body system from the non-covered treatment, or is an unexpected complication which is untoward based upon prior clinical experience with the procedure."

Providers exclusively determine medical necessity of treatment; only medically necessary procedures are covered for TRICARE beneficiaries.

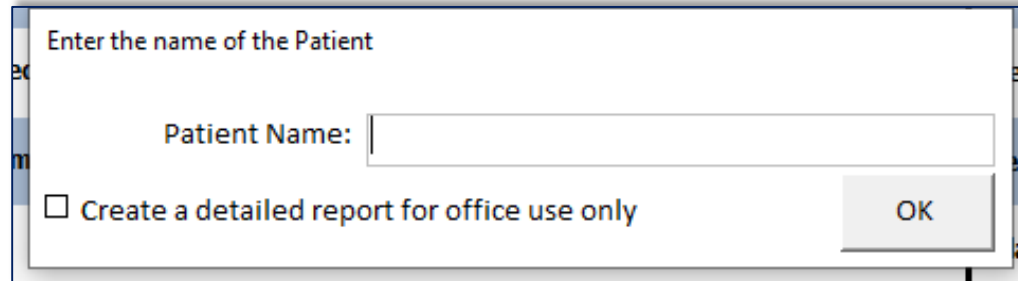
PATIENT'S SIGNATURE

WITNESS SIGNATURE

DATE

DATE

- Once the estimate is generated, print a cost estimate and internal detail report (if applicable).



Enter the name of the Patient

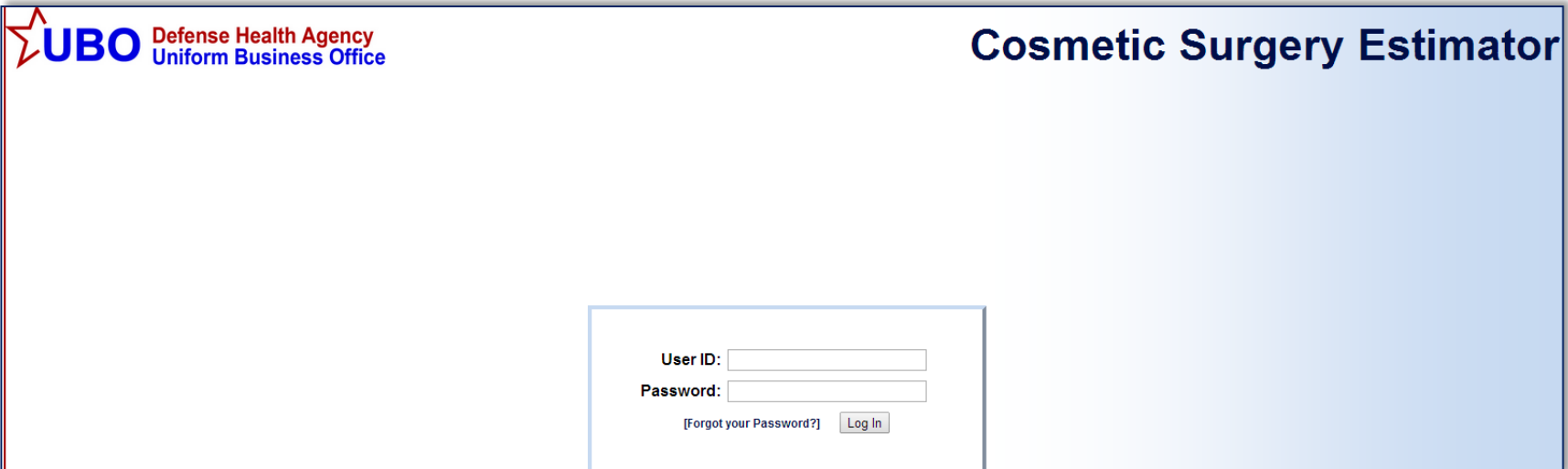
Patient Name:

Create a detailed report for office use only

OK

CSE v15 Distribution & Effective Date

- The CSE v15 application and all associated materials will be available for download from the DHA UBO CSE Web site at: <https://www.ubocse.org>
- Files will be password protected for controlled access
- User ID and password will be distributed to UBO Service and NCR MD Program Managers who will disseminate information to MTF staff



The screenshot shows the login interface for the 'Cosmetic Surgery Estimator' application. In the top left corner, there is the UBO logo (a red star) and the text 'UBO Defense Health Agency Uniform Business Office'. In the top right corner, the title 'Cosmetic Surgery Estimator' is displayed. The main content area is a light blue gradient. Centered at the bottom is a white login box containing the following elements: 'User ID:' followed by a text input field, 'Password:' followed by a text input field, a link '[Forgot your Password?]', and a 'Log In' button.

- Items included in CSE v15 package:
 - CSE v15 Access database
 - CSE v15 User Guide
 - CSE v15 Superbill
 - CSE v15 Provider's Guide to the Superbill
 - CSE v15 Glossary
 - CSE v15 Patient Guide

- Updated “Elective Cosmetic Procedures” section of UBO User Guide
 - Revised 2018
- Available at UBO Web site: <https://health.mil/Military-Health-Topics/Business-Support/Uniform-Business-Office/Policy-and-Guidance>
- 2017 version of the Defense Health Agency Procedures Manual is the most current version
 - Upcoming Manual updates do not change cosmetic surgery policy
 - Still reiterates and reinforces requirements in the 2005 HA Policy 05-020 memorandum

- **Access Questions**

- 1) My CSE Login/Password is not working, how do I obtain a new one?
- 2) I keep getting an error message when I try to open the CSE, what do I do?
- 3) How do I obtain access to the CSE for my MTF?

- **Patient Questions**

- 1) Patient has complication from cosmetic surgery procedure performed in our facility and requests treatment of these areas. Pay vs not?

- Code Additions, Modifications, Deletions
- CSE v15 Rates
- Letter of Acknowledgment
- Provider Version
- APC and ASC Guidance Reminder
- CSE v15 Distribution and Effective Date
 - **NOTE: New version (0716a) released July 16th, 2019.**

Questions?

This in-service webinar has been approved by the American Academy of Professional Coders (AAPC) for 1.0 Continuing Education Unit (CEU) credit for DoD personnel (.mil address required). Granting of this approval in no way constitutes endorsement by the AAPC of the program, content or the program sponsor. There is no charge for this credit.

- **Live broadcast webinar (post-test not required)**
 - Login prior to the broadcast with your: 1) full name; 2) Service affiliation
 - View the entire broadcast
 - After completion of the live broadcast email your first and last name to webmeeting@federaladvisory.com. Make the subject of the email 'UBO Webinar CEU.' A Certificate of Approval including an AAPC Index Number will be sent via e-mail to participants who e-mailed as required. This may take several business days.
- **Archived webinar (post-test required)**
 - View the entire archived webinar (free and available on demand at <https://health.mil/Military-Health-Topics/Business-Support/Uniform-Business-Office/UBO-Learning-Center/Archived-Webinars>)
 - Complete a post-test available *within* the archived webinar
 - E-mail answers to webmeeting@federaladvisory.com
 - If you receive a passing score of at least 70%, we will e-mail MHS personnel with a .mil email address a Certificate of Approval including an AAPC Index Number
- The original Certificate of Approval may not be altered except to add the participant's name and webinar date or the date the archived Webinar was viewed. Certificates should be maintained on file for at least six months beyond your renewal date in the event you are selected for CEU verification by AAPC
- For additional information or questions regarding AAPC CEUs, please contact the AAPC.
- Other organizations, such as American Health Information Management Association (AHIMA), American College of Healthcare Executives (ACHE), and American Association of Healthcare Administrative Managers (AAHAM), may also grant credit for DHA UBO Webinars. Check with the organization directly for qualification and reporting guidance.