

DVBIC-TBICoE 15-Year Studies Population and Demographics: Caregiver and Family Member

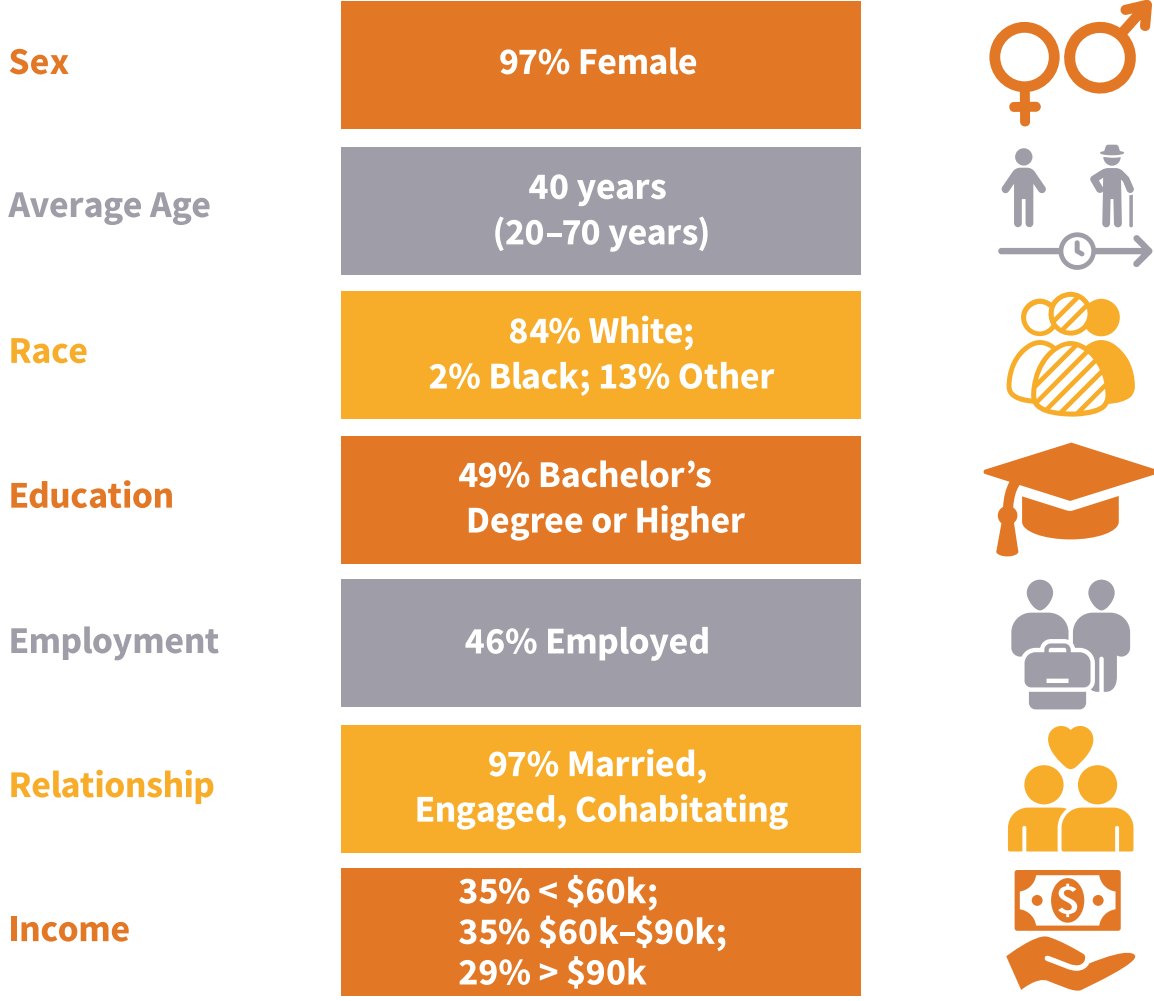
Traumatic Brain Injury Center of Excellence

THE 15 YEAR CAREGIVER AND FAMILY MEMBER STUDY SEEKS TO UNDERSTAND THE HEALTH AND SERVICE NEEDS OF CAREGIVERS OF SERVICE MEMBERS AND VETERANS WITH TBI.

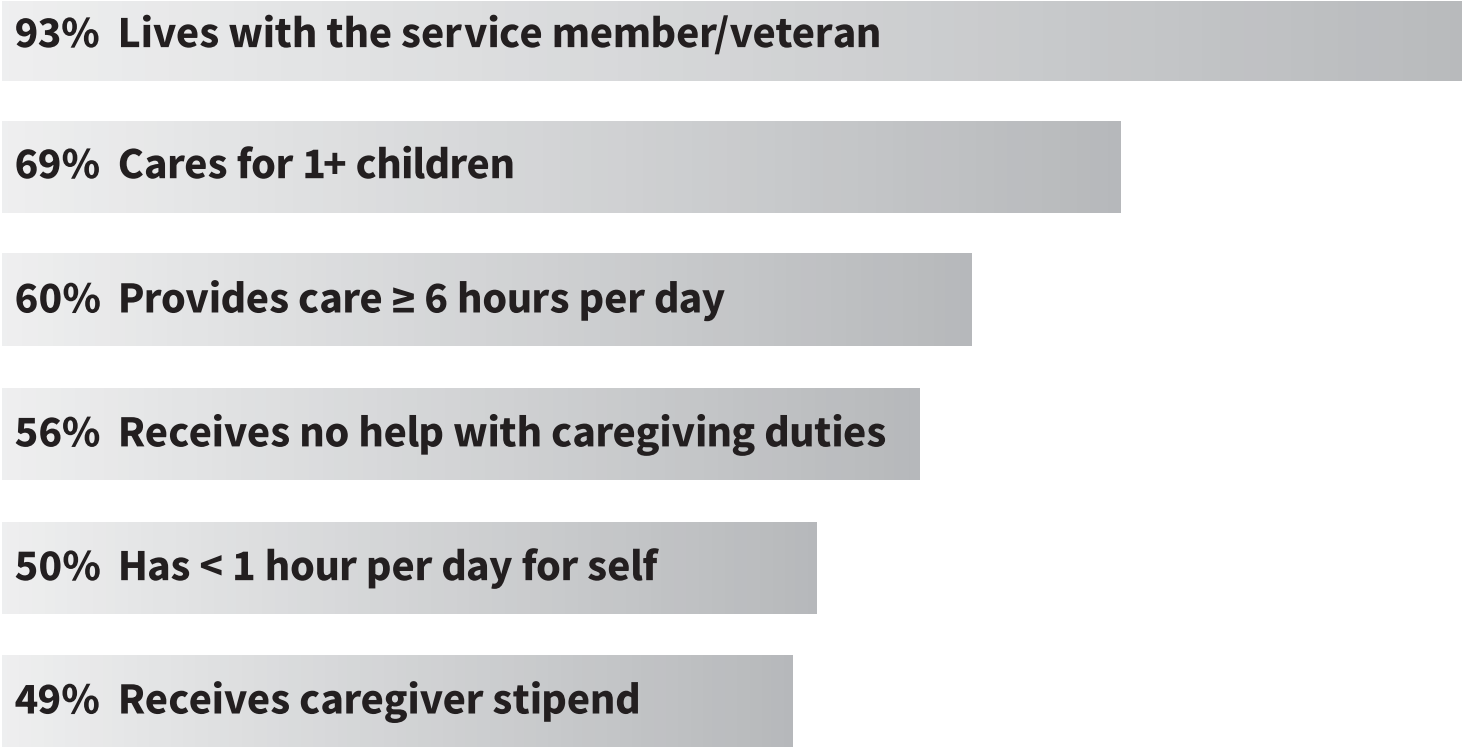
DATA AS OF 2021: 551 CAREGIVERS

Demographics are included for both the TBI caregiver enrolled in the study as well as for the service member or veteran for whom care is provided.

CAREGIVER DEMOGRAPHICS

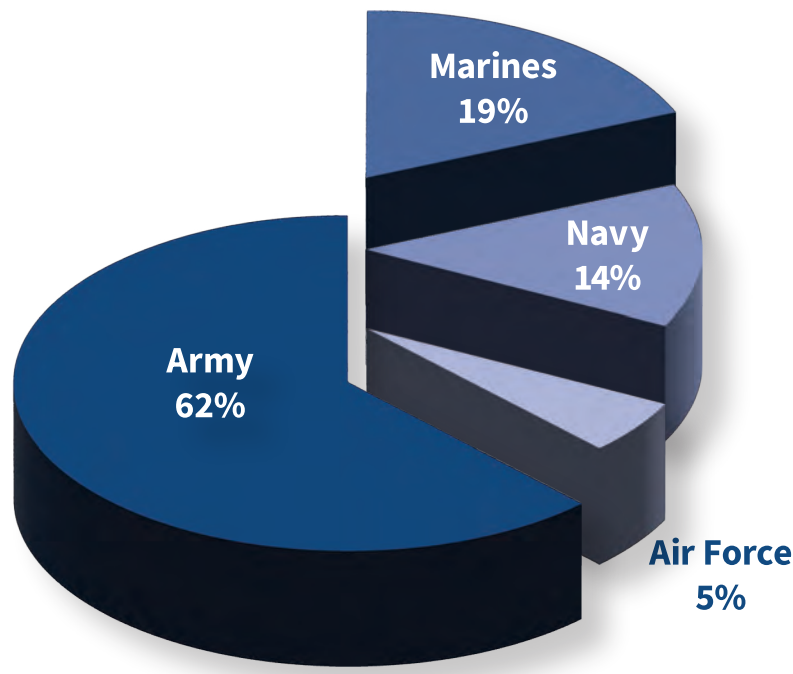


CAREGIVER CHARACTERISTICS

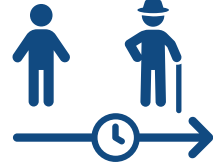


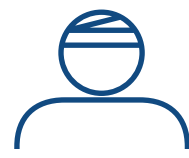
SERVICE MEMBER/VETERAN CHARACTERISTICS

BRANCH OF SERVICE



 99% Male

 Average Age: 39 years

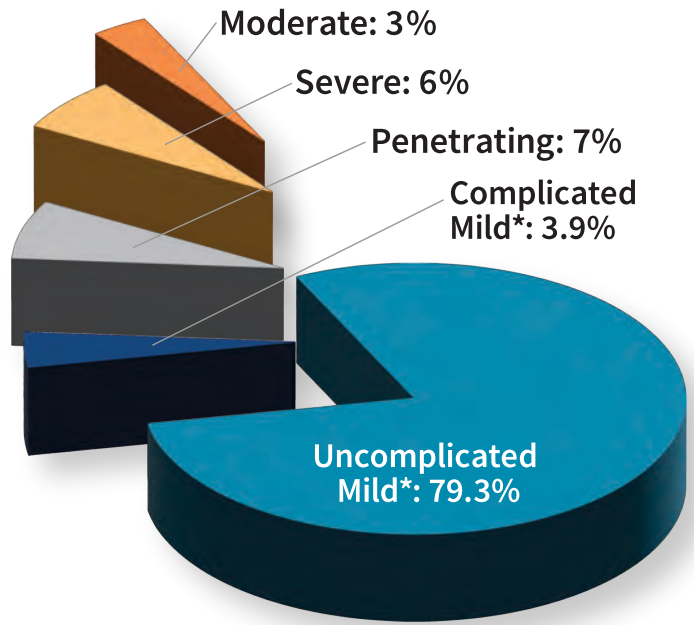
 Average time since injury: 8 years

*Coast Guard and Other make up < 1%

Military History

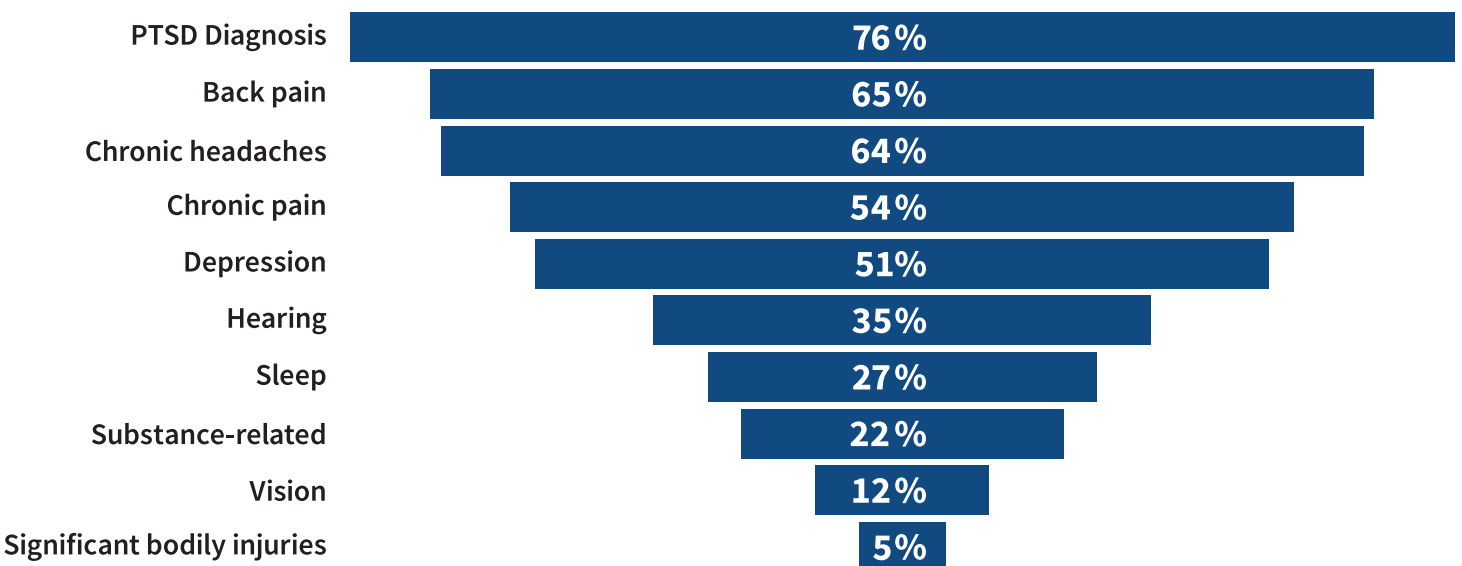
- 25% Currently in the Military
- 7% Special Operations Forces
- 91% 1+ Combat Deployments
- 74% Combat Exposure
- 88% Service-connected Disability

TBI Type and Severity



*For research purposes, the 15-Year Study categorizes mild TBI in a manner that deviates from the VA-DOD definition. Complicated mTBI meets the clinical definition of mTBI, and in addition has an abnormal CT scan.

Comorbidities



HAVE SPECIFIC QUESTIONS? CONTACT US!

Principal Investigator: Louis French, PsyD; Scientific Directors: Rael Lange, PhD and Tracey Brickell, DPsych

Natural History Study: dha.natural.history@health.mil

Caregiver & Family Member Study: dha.caregiver.study@health.mil