

Deployment Health Assessments

U.S. Armed Forces

February 2011

(Data through January 2011)

Armed Forces Health Surveillance Center

Update: Deployment Health Assessments, U.S. Armed Forces, February 2011

Since January 2003, peaks and troughs in the numbers of pre- and post-deployment health assessment forms transmitted to the Armed Forces Health Surveillance Center generally corresponded to times of departure and return of large numbers of deployers. Between April 2006 and December 2010, the number of post-deployment reassessment (PDHRA) forms per month ranged from 15,600 to 46,900 (Table 1, Figure 1).

During the past 12 months, the proportions of returned deployers who rated their health as “fair” or “poor” were 8-10% on post-deployment health assessment questionnaires and 10-14% on PDHRA questionnaires (Figure 2).

In general, on post-deployment assessments and reassessments, deployers in the Army and in reserve components were more likely than their respective counterparts to report health and exposure-related concerns (Table 2, Figure 3). Both active and reserve component members were more likely to report exposure concerns three to six months after, compared to the time of return from deployment (Figure 3).

At the time of return from deployment, soldiers serving in the active component were the most likely of all deployers to receive mental health referrals; however, three to six months after returning, active component soldiers were less likely than Army Reservists to receive mental health referrals (Table 2).

Finally, during the past three years, reserve component members have been more likely than active component service members to report “exposure concerns” on postdeployment assessments and reassessments (Figure 3).

Table 1. Deployment-related health assessment forms, by month, U.S. Armed Forces, February 2010-January 2011

	Pre-deployment assessment DD2795		Post-deployment assessment DD2796		Post-deployment reassessment DD2900	
	No.	%	No.	%	No.	%
Total	388,881	100	406,141	100	326,087	100
2010						
February	31,514	8.1	27,802	6.8	27,130	8.3
March	32,693	8.4	44,838	11.0	35,989	11.0
April	32,426	8.3	33,628	8.3	25,014	7.7
May	38,470	9.9	35,474	8.7	22,863	7.0
June	31,273	8.0	45,392	11.2	24,780	7.6
July	30,454	7.8	46,901	11.5	23,068	7.1
August	38,145	9.8	37,426	9.2	31,670	9.7
September	33,197	8.5	27,905	6.9	28,179	8.6
October	27,484	7.1	27,651	6.8	26,853	8.2
November	23,922	6.2	29,357	7.2	29,726	9.1
December	31,487	8.1	29,693	7.3	24,333	7.5
2011						
January	37,816	9.7	20,074	4.9	26,482	8.1

Figure 2. Proportion of deployment health assessment forms with self-assessed health status as “fair” or “poor”, U.S. Armed Forces, February 2010-January 2011

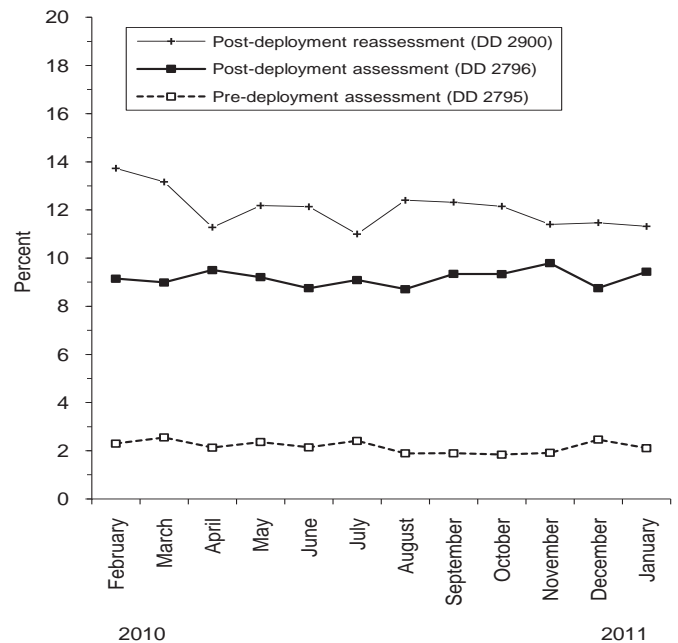
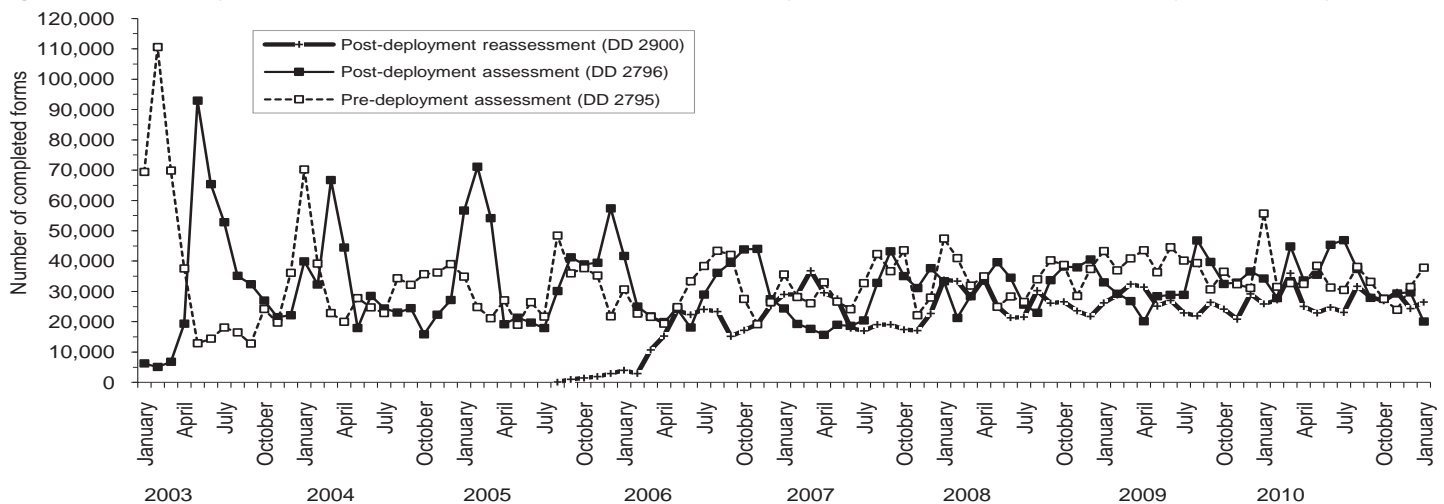


Figure 1. Total deployment health assessment and reassessment forms, by month, U.S. Armed Forces, January 2003-January 2011



Data Source: Defense Medical Surveillance System

Table 2. Percentage of service members who endorsed selected questions/received referrals on health assessment forms, U.S. Armed Forces, February 2010-January 2011

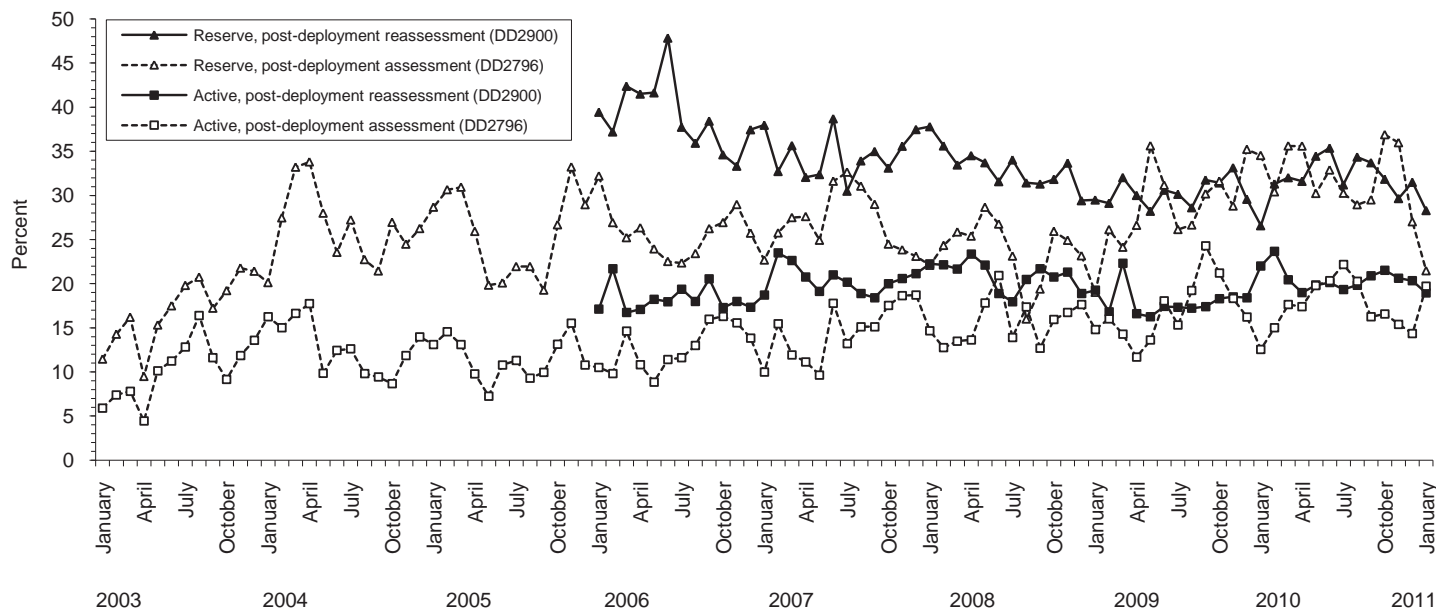
Active component	Army			Navy			Air Force			Marine Corps			All service members		
	Pre-deploy DD2795	Post-deploy DD2796	Reassess DD2900	Pre-deploy DD2795	Post-deploy DD2796	Reassess DD2900	Pre-deploy DD2795	Post-deploy DD2796	Reassess DD2900	Pre-deploy DD2795	Post-deploy DD2796	Reassess DD2900	Pre-deploy DD2795	Post-deploy DD2796	Reassess DD2900
	n=	n=	n=	n=	n=	n=	n=	n=	n=	n=	n=	n=	n=	n=	n=
	142,912	134,160	131,586	16,127	16,419	14,790	58,518	52,511	50,656	30,727	30,982	30,649	248,284	234,072	227,681
	%	%	%	%	%	%	%	%	%	%	%	%	%	%	%
General health "fair" or "poor"	3.6	9.8	14.1	1.0	4.5	5.9	0.4	3.3	4.1	1.4	7.8	10.5	2.4	7.7	10.9
Health concerns, not wound or injury	11.9	26.1	25.3	3.0	11.8	15.0	1.4	5.6	11.0	2.4	12.1	19.6	7.7	18.6	20.7
Health worse now than before deployed	na	21.6	23.7	na	11.6	13.5	na	8.5	8.6	na	17.5	20.8	na	17.4	19.3
Exposure concerns	na	21.3	21.3	na	19.7	21.9	na	10.0	14.3	na	15.3	26.2	na	17.9	20.5
PTSD symptoms (2 or more)	na	9.2	11.3	na	5.9	8.3	na	2.6	2.9	na	8.1	11.2	na	7.4	9.2
Depression symptoms (any)	na	30.4	32.7	na	22.3	25.1	na	13.1	13.6	na	26.1	32.0	na	25.4	27.9
Referral indicated by provider (any)	5.1	34.6	29.9	3.3	21.5	18.4	2.0	12.6	7.2	2.0	21.4	31.6	3.8	27.0	24.3
Mental health referral indicated ^a	1.4	7.5	17.2	0.4	3.1	6.1	0.5	1.5	2.2	0.2	2.3	6.4	1.0	5.2	11.7
Medical visit following referral ^b	99.2	99.7	98.4	90.4	90.5	91.3	85.9	96.3	98.1	54.0	79.5	94.5	93.6	97.0	97.3

Reserve component	Army			Navy			Air Force			Marine Corps			All service members		
	Pre-deploy DD2795	Post-deploy DD2796	Reassess DD2900	Pre-deploy DD2795	Post-deploy DD2796	Reassess DD2900	Pre-deploy DD2795	Post-deploy DD2796	Reassess DD2900	Pre-deploy DD2795	Post-deploy DD2796	Reassess DD2900	Pre-deploy DD2795	Post-deploy DD2796	Reassess DD2900
	n=	n=	n=	n=	n=	n=	n=	n=	n=	n=	n=	n=	n=	n=	n=
	59,910	74,093	68,435	4,689	4,643	5,261	15,688	14,758	14,950	2,169	1,810	6,039	82,456	95,304	94,685
	%	%	%	%	%	%	%	%	%	%	%	%	%	%	%
General health "fair" or "poor"	1.0	11.8	16.6	0.4	10.2	10.5	0.3	5.3	5.6	1.0	9.7	10.3	0.8	10.7	14.1
Health concerns, not wound or injury	17.7	35.4	43.0	1.7	33.7	31.8	0.7	9.7	16.1	2.3	20.1	36.2	13.1	31.0	37.7
Health worse now than before deployed	na	26.1	31.7	na	20.8	20.9	na	13.8	11.5	na	28.3	25.8	na	24.0	27.6
Exposure concerns	na	32.9	34.4	na	47.9	36.0	na	17.1	21.6	na	24.1	32.3	na	31.0	32.3
PTSD symptoms (2 or more)	na	9.7	18.6	na	5.8	12.8	na	2.9	3.3	na	10.2	14.1	na	8.4	15.6
Depression symptoms (any)	na	30.2	34.0	na	25.8	25.4	na	15.4	14.4	na	34.4	28.1	na	27.8	30.1
Referral indicated by provider (any)	3.4	38.4	40.3	3.3	31.5	25.6	0.4	17.1	10.1	2.6	39.2	35.8	2.8	34.8	34.4
Mental health referral indicated ^a	0.3	5.2	15.2	0.2	2.9	8.0	0.1	1.0	2.0	0.1	3.4	12.2	0.3	4.4	12.5
Medical visit following referral ^b	86.2	99.1	41.0	95.5	97.2	49.2	72.1	69.3	51.9	68.8	64.2	40.9	86.3	96.6	41.9

^aIncludes behavioral health, combat stress and substance abuse referrals.

^bRecord of inpatient or outpatient visit within 6 months after referral.

Figure 3. Proportion of service members who endorsed exposure concerns on post-deployment health assessments, U.S. Armed Forces, January 2004-January 2011



Data Source: Defense Medical Surveillance System