

Deployment Health Assessments

U.S. Armed Forces

June 2011

(Data through May 2011)

Armed Forces Health Surveillance Center

Update: Deployment Health Assessments, U.S. Armed Forces, June 2011

Since January 2003, peaks and troughs in the numbers of pre- and post-deployment health assessment forms transmitted to the Armed Forces Health Surveillance Center generally corresponded to times of departure and return of large numbers of deployers. Between April 2006 and May 2011, the number of post-deployment reassessment (PDHRA) forms per month ranged from 15,600 to 46,900 (**Table 1, Figure 1**).

During the past 12 months, the proportions of returned deployers who rated their health as “fair” or “poor” were 8-10% on post-deployment health assessment questionnaires and 10-13% on PDHRA questionnaires (**Figure 2**).

In general, on post-deployment assessments and reassessments, deployers in the Army and in reserve components were more likely than their respective counterparts to report health and exposure-related concerns (**Table 2, Figure 3**). Both active and reserve component members were more likely to report exposure concerns three to six months after, compared to the time of return from deployment (**Figure 3**).

At the time of return from deployment, soldiers serving in the active component were the most likely of all deployers to receive mental health referrals; however, three to six months after returning, Army reservists were as likely as active component soldiers to receive mental health referrals (**Table 2**).

Finally, during the past three years, reserve component members have been more likely than active component service members to report “exposure concerns” on postdeployment assessments and reassessments (**Figure 3**).

Table 1. Deployment-related health assessment forms, by month, U.S. Armed Forces, June 2010-May 2011

	Pre-deployment assessment DD2795		Post-deployment assessment DD2796		Post-deployment reassessment DD2900	
	No.	%	No.	%	No.	%
Total	400,371	100	394,795	100	317,556	100
2010						
June	31,343	7.8	46,055	11.7	25,442	8.0
July	30,531	7.6	48,359	12.2	23,648	7.4
August	38,322	9.6	39,018	9.9	31,944	10.1
September	33,437	8.4	28,826	7.3	28,436	9.0
October	27,564	6.9	27,943	7.1	27,135	8.5
November	24,033	6.0	29,884	7.6	30,299	9.5
December	31,858	8.0	30,656	7.8	24,792	7.8
2011						
January	42,374	10.6	24,834	6.3	28,360	8.9
February	33,586	8.4	25,429	6.4	26,093	8.2
March	37,239	9.3	32,860	8.3	28,444	9.0
April	38,478	9.6	34,195	8.7	23,830	7.5
May	31,606	7.9	26,736	6.8	19,133	6.0

Figure 2. Proportion of deployment health assessment forms with self-assessed health status as “fair” or “poor”, U.S. Armed Forces, June 2010-May 2011

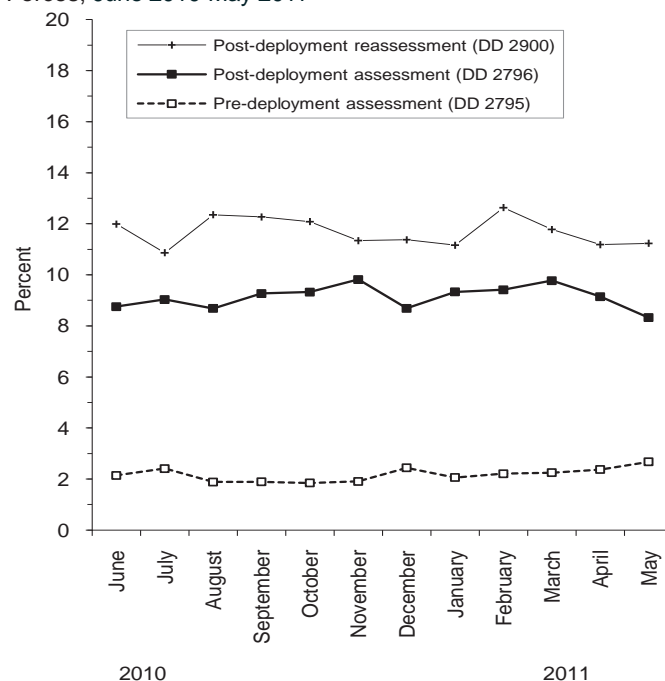
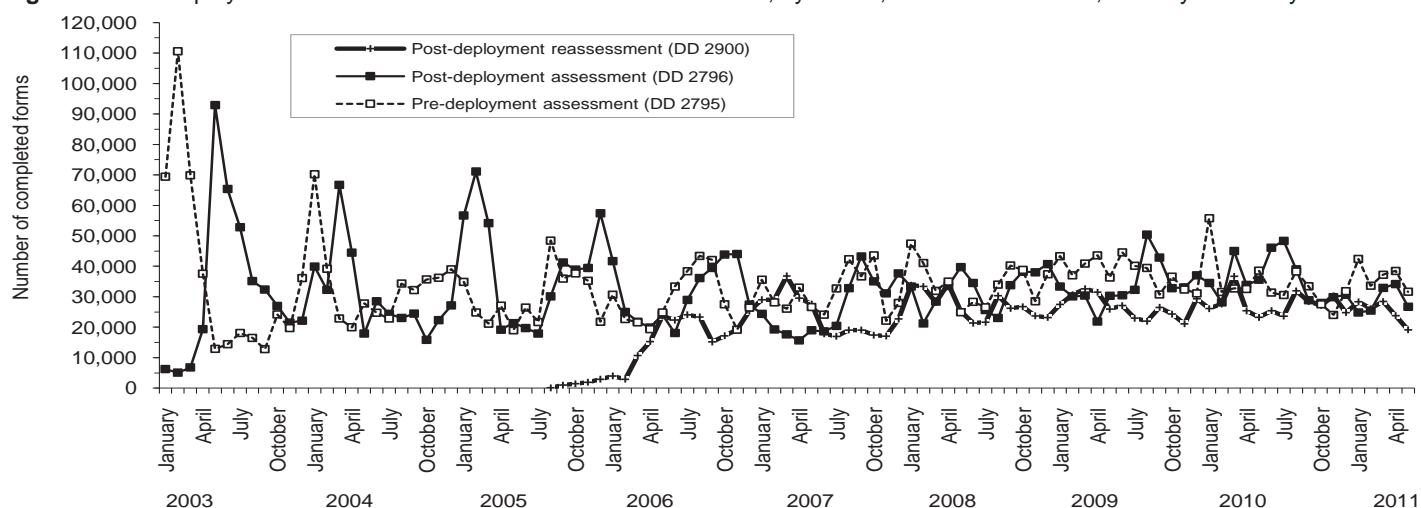


Figure 1. Total deployment health assessment and reassessment forms, by month, U.S. Armed Forces, January 2003-May 2011



Data Source: Defense Medical Surveillance System

Table 2. Percentage of service members who endorsed selected questions/received referrals on health assessment forms, U.S. Armed Forces, June 2010-May 2011

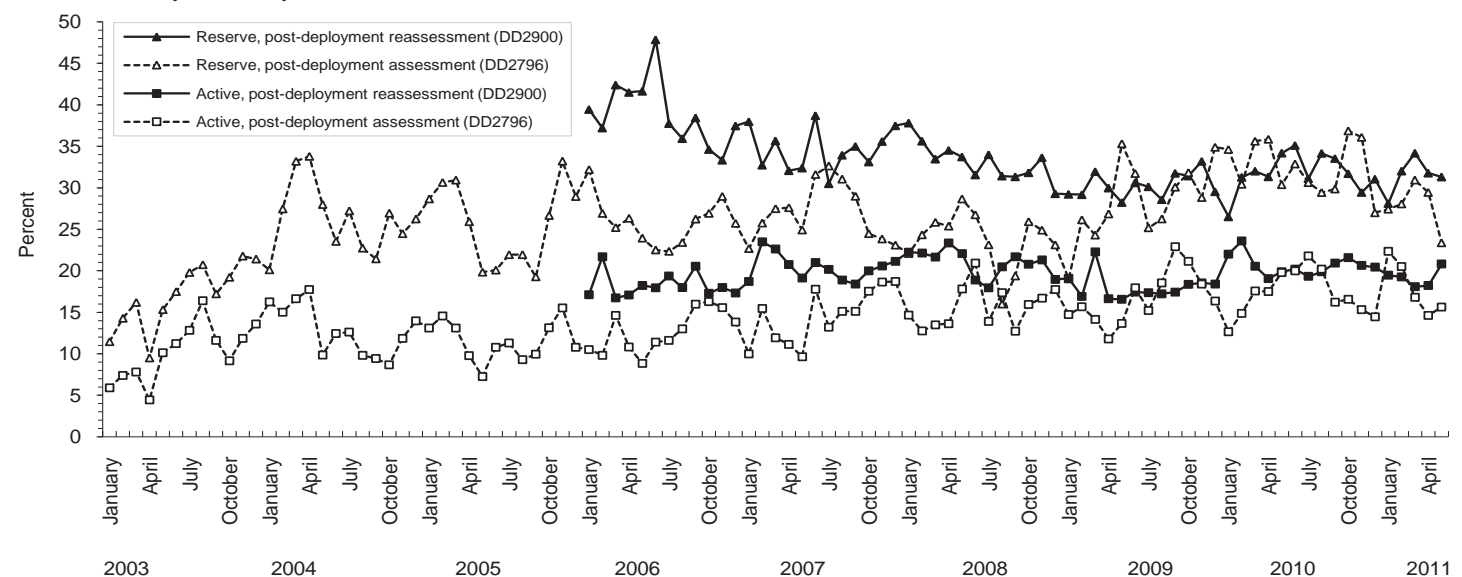
	Army			Navy			Air Force			Marine Corps			All service members		
	Pre-deploy DD2795	Post-deploy DD2796	Reassess DD2900	Pre-deploy DD2795	Post-deploy DD2796	Reassess DD2900	Pre-deploy DD2795	Post-deploy DD2796	Reassess DD2900	Pre-deploy DD2795	Post-deploy DD2796	Reassess DD2900	Pre-deploy DD2795	Post-deploy DD2796	Reassess DD2900
	n=	n=	n=	n=	n=	n=	n=	n=	n=	n=	n=	n=	n=	n=	n=
Active component	144,821	141,934	120,661	15,760	16,041	17,335	61,869	53,508	50,571	35,159	37,081	32,381	257,890	251,838	220,948
	%	%	%	%	%	%	%	%	%	%	%	%	%	%	%
General health "fair" or "poor"	3.6	10.1	13.4	1.2	4.4	6.0	0.6	3.3	4.1	1.5	8.3	10.6	2.4	7.9	10.3
Health concerns, not wound or injury	10.6	25.9	24.7	3.2	11.0	14.8	2.0	5.8	11.2	2.4	13.5	20.9	7.0	18.7	20.3
Health worse now than before deployed	na	22.3	22.7	na	10.7	13.7	na	8.5	8.8	na	19.1	21.7	na	18.0	18.7
Exposure concerns	na	20.3	19.4	na	18.8	23.4	na	11.0	14.3	na	18.8	28.8	na	18.0	19.9
PTSD symptoms (2 or more)	na	10.2	11.2	na	5.3	8.5	na	2.5	3.0	na	9.2	12.3	na	8.0	9.3
Depression symptoms (any)	na	31.0	31.4	na	21.8	25.9	na	13.1	13.9	na	27.2	33.1	na	25.9	27.2
Referral indicated by provider (any)	4.8	35.7	31.0	3.3	18.8	17.8	1.9	13.9	7.8	2.1	25.3	29.6	3.6	28.3	24.5
Mental health referral indicated ^a	1.4	8.1	17.8	0.5	2.6	6.4	0.5	1.4	2.5	0.2	2.8	7.1	1.0	5.5	11.9
Medical visit following referral ^b	99.1	99.7	97.9	94.6	90.4	92.6	82.4	97.5	98.9	74.9	80.7	90.3	94.3	96.6	96.4

	Army			Navy			Air Force			Marine Corps			All service members		
	Pre-deploy DD2795	Post-deploy DD2796	Reassess DD2900	Pre-deploy DD2795	Post-deploy DD2796	Reassess DD2900	Pre-deploy DD2795	Post-deploy DD2796	Reassess DD2900	Pre-deploy DD2795	Post-deploy DD2796	Reassess DD2900	Pre-deploy DD2795	Post-deploy DD2796	Reassess DD2900
	n=	n=	n=	n=	n=	n=	n=	n=	n=	n=	n=	n=	n=	n=	n=
Reserve component	58,757	58,558	67,263	4,585	5,362	5,566	15,185	13,372	16,272	2,384	2,192	3,781	80,911	79,484	92,882
	%	%	%	%	%	%	%	%	%	%	%	%	%	%	%
General health "fair" or "poor"	1.0	11.8	17.0	0.4	9.4	9.8	0.3	5.7	5.4	0.9	12.5	9.7	0.8	10.6	14.2
Health concerns, not wound or injury	15.0	36.3	43.4	1.8	30.4	31.5	0.7	8.9	16.4	2.3	39.0	35.9	11.2	31.4	37.6
Health worse now than before deployed	na	26.2	32.0	na	22.5	20.8	na	14.3	12.0	na	33.0	25.2	na	24.1	27.5
Exposure concerns	na	31.9	34.5	na	44.2	36.9	na	16.1	21.1	na	24.1	31.8	na	29.9	32.2
PTSD symptoms (2 or more)	na	9.7	19.5	na	6.8	12.5	na	3.2	3.7	na	12.9	17.4	na	8.5	16.2
Depression symptoms (any)	na	29.1	34.0	na	27.6	26.2	na	15.6	14.7	na	38.7	26.0	na	27.0	29.8
Referral indicated by provider (any)	3.0	40.5	44.8	2.2	36.0	27.1	0.5	18.6	10.9	2.7	48.4	34.6	2.4	36.7	37.4
Mental health referral indicated ^a	0.4	5.2	18.4	0.1	3.4	9.4	0.1	1.2	2.5	0.3	5.2	13.0	0.3	4.4	14.9
Medical visit following referral ^b	81.6	98.3	42.0	96.4	98.6	47.0	56.7	69.4	47.3	73.7	70.0	37.6	81.5	95.2	42.2

^aIncludes behavioral health, combat stress and substance abuse referrals.

^bRecord of inpatient or outpatient visit within 6 months after referral.

Figure 3. Proportion of service members who endorsed exposure concerns on post-deployment health assessments, U.S. Armed Forces, January 2003-May 2011



Data Source: Defense Medical Surveillance System