

Deployment Health Assessments

U.S. Armed Forces

December 2011

(Data through November 2011)

Armed Forces Health Surveillance Center

Update: Deployment Health Assessments, U.S. Armed Forces, November 2011

Since January 2003, peaks and troughs in the numbers of pre- and post-deployment health assessment forms transmitted to the Armed Forces Health Surveillance Center generally corresponded to times of departure and return of large numbers of deployers. Between April 2006 and November 2011, the number of post-deployment reassessment (PDHRA) forms per month ranged from 15,309 to 36,845 (Table 1, Figure 1).

During the past 12 months, the proportions of returned deployers who rated their health as “fair” or “poor” were 8-11% on post-deployment health assessment questionnaires and 10-13% on PDHRA questionnaires (Figure 2).

In general, on post-deployment assessments and reassessments, deployers in the Army and in reserve components were more likely than their respective counterparts to report health and exposure-related concerns (Table 2, Figure 3). With the exception of Navy reserve component members, both active and reserve component members were more likely to report exposure concerns three to six months after, compared to the time of return from deployment (Figure 3).

At the time of return from deployment, soldiers serving in the active component were the most likely of all deployers to receive mental health referrals; however, three to six months after returning, Army reservists were more likely than active component soldiers to receive mental health referrals (Table 2).

Finally, during the past three years, reserve component members have been more likely than active component service members to report “exposure concerns” on postdeployment assessments and reassessments (Figure 3).

Table 1. Deployment-related health assessment forms, by month, U.S. Armed Forces, December 2010-November 2011

	Pre-deployment assessment DD2795		Post-deployment assessment DD2796		Post-deployment reassessment DD2900	
	No.	%	No.	%	No.	%
Total	397,849	100	371,960	100	298,918	100
2010						
December	31,947	8.0	30,788	8.3	24,911	8.3
2011						
January	42,513	10.7	24,932	6.7	28,601	9.6
February	33,829	8.5	25,598	6.9	26,373	8.8
March	37,875	9.5	33,126	8.9	29,027	9.7
April	39,277	9.9	34,998	9.4	24,782	8.3
May	34,185	8.6	30,523	8.2	21,375	7.2
June	33,262	8.4	27,760	7.5	21,790	7.3
July	27,731	7.0	29,143	7.8	23,551	7.9
August	33,127	8.3	30,594	8.2	25,923	8.7
September	31,562	7.9	33,667	9.1	23,846	8.0
October	29,802	7.5	35,042	9.4	26,644	8.9
November	22,739	5.7	35,789	9.6	22,095	7.4

Figure 2. Proportion of deployment health assessment forms with self-assessed health status as “fair” or “poor”, U.S. Armed Forces, December 2010-November 2011

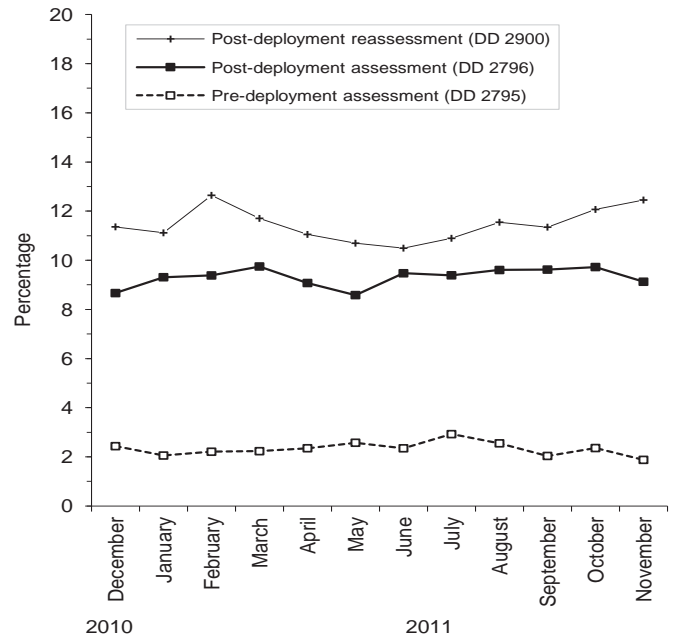


Figure 1. Total deployment health assessment and reassessment forms, by month, U.S. Armed Forces, January 2003-November 2011

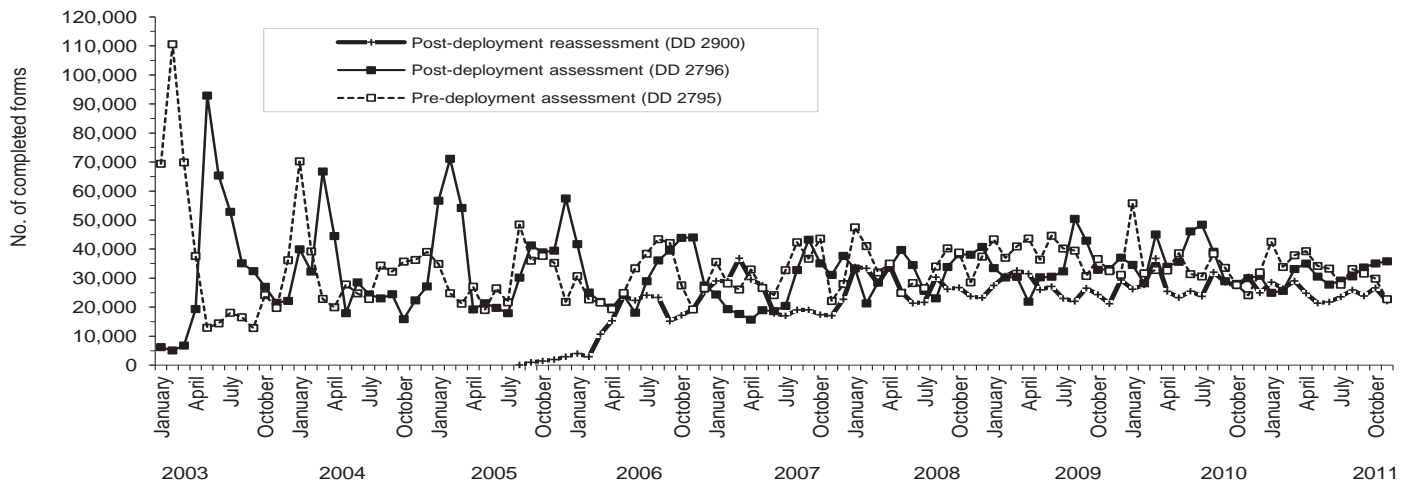


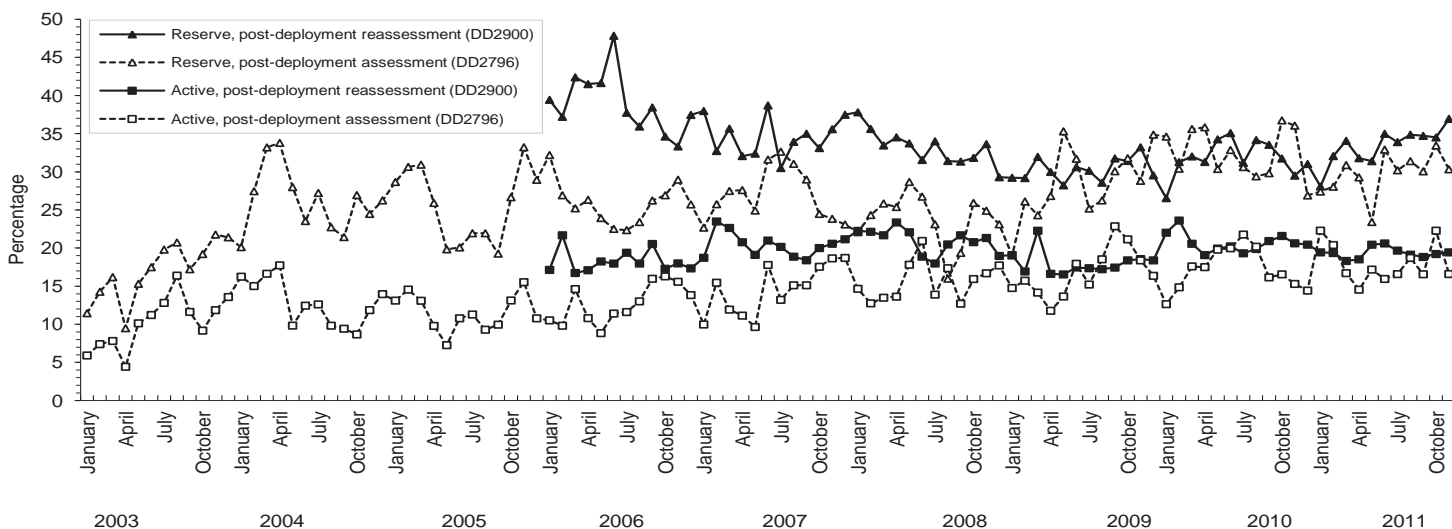
Table 2. Percentage of service members who endorsed selected questions/received referrals on health assessment forms, U.S. Armed Forces, December 2010-November 2011

	Army			Navy			Air Force			Marine Corps			All service members		
	Pre-deploy DD2795	Post-deploy DD2796	Reassessmt DD2900	Pre-deploy DD2795	Post-deploy DD2796	Reassessmt DD2900	Pre-deploy DD2795	Post-deploy DD2796	Reassessmt DD2900	Pre-deploy DD2795	Post-deploy DD2796	Reassessmt DD2900	Pre-deploy DD2795	Post-deploy DD2796	Reassessmt DD2900
	n=	n=	n=	n=	n=	n=	n=	n=	n=	n=	n=	n=	n=	n=	n=
Active component	143,788	128,902	121,472	16,140	18,759	17,698	62,048	55,772	48,785	38,392	38,041	33,735	260,368	241,474	221,690
	%	%	%	%	%	%	%	%	%	%	%	%	%	%	%
General health "fair" or "poor"	4.0	10.9	13.6	1.3	4.4	6.3	0.6	3.3	4.0	1.4	8.2	10.6	2.6	8.2	10.4
Health concerns, not wound or injury	14.3	24.9	23.9	3.2	11.8	14.6	2.6	6.7	11.2	2.8	13.9	21.9	9.1	18.0	20.0
Health worse now than before deployed	0.0	23.5	24.9	na	10.5	13.4	na	8.6	8.9	na	18.7	22.1	na	18.3	20.1
Exposure concerns	0.0	18.2	18.1	na	17.5	23.0	na	14.1	14.5	na	19.6	29.5	na	17.4	19.4
PTSD symptoms (2 or more)	0.0	11.7	12.4	na	5.1	8.4	na	2.6	2.9	na	8.7	13.1	na	8.6	10.1
Depression symptoms (any)	0.0	29.9	30.6	na	20.3	26.2	na	12.5	13.8	na	27.3	33.8	na	24.7	27.0
Referral indicated by provider (any)	5.5	38.1	27.3	3.2	18.5	17.0	2.0	17.4	8.7	2.4	24.7	24.7	4.1	29.7	22.0
Mental health referral indicated ^a	1.7	9.9	13.1	0.4	2.3	6.3	0.5	2.1	3.0	0.2	2.8	6.9	1.1	6.4	9.4
Medical visit following referral ^b	98.6	99.0	97.1	92.4	81.6	89.8	96.2	96.0	99.2	56.9	75.3	91.1	94.1	94.0	95.7
	Army			Navy			Air Force			Marine Corps			All service members		
	Pre-deploy DD2795	Post-deploy DD2796	Reassessmt DD2900	Pre-deploy DD2795	Post-deploy DD2796	Reassessmt DD2900	Pre-deploy DD2795	Post-deploy DD2796	Reassessmt DD2900	Pre-deploy DD2795	Post-deploy DD2796	Reassessmt DD2900	Pre-deploy DD2795	Post-deploy DD2796	Reassessmt DD2900
	n=	n=	n=	n=	n=	n=	n=	n=	n=	n=	n=	n=	n=	n=	n=
Reserve component	57,327	58,305	50,248	3,874	4,898	6,697	15,345	12,386	14,374	3,051	3,041	2,720	79,597	78,630	74,039
	%	%	%	%	%	%	%	%	%	%	%	%	%	%	%
General health "fair" or "poor"	0.9	11.6	16.7	0.2	8.1	9.1	0.3	5.4	5.9	0.9	13.3	13.3	0.8	10.5	13.8
Health concerns, not wound or injury	14.4	36.6	43.2	1.7	26.8	34.5	0.8	9.2	17.7	3.0	37.5	43.9	10.7	31.7	37.5
Health worse now than before deployed	0.0	26.3	32.2	na	21.4	22.3	na	14.0	12.7	na	31.7	32.2	na	24.3	27.6
Exposure concerns	0.0	30.8	35.0	na	41.0	40.2	na	17.9	22.0	na	30.1	36.6	na	29.4	33.0
PTSD symptoms (2 or more)	0.0	10.4	20.1	na	7.6	13.6	na	3.4	3.9	na	11.3	23.0	na	9.2	16.5
Depression symptoms (any)	0.0	28.2	33.4	na	26.3	28.5	na	14.5	15.6	na	37.4	34.4	na	26.3	29.6
Referral indicated by provider (any)	2.9	42.5	51.6	1.9	37.7	30.6	0.8	21.8	12.7	2.9	37.6	41.7	2.5	38.8	41.8
Mental health referral indicated ^a	0.4	6.3	22.3	0.0	3.6	12.4	0.1	1.7	3.1	0.1	5.0	18.8	0.3	5.4	17.5
Medical visit following referral ^b	88.9	98.9	41.0	97.9	97.1	39.6	59.6	70.1	45.8	66.0	75.5	42.1	86.5	94.9	41.3

^aIncludes behavioral health, combat stress and substance abuse referrals.

^bRecord of inpatient or outpatient visit within 6 months after referral.

Figure 3. Proportion of service members who endorsed exposure concerns on post-deployment health assessments, U.S. Armed Forces, January 2003-November 2011



Data Source: Defense Medical Surveillance System