

# Deployment Health Assessments

**U.S. Armed Forces**

**January 2012**

(Data through December 2011)

Armed Forces Health Surveillance Center

# Update: Deployment Health Assessments, U.S. Armed Forces, December 2011

Since January 2003, peaks and troughs in the numbers of pre- and post-deployment health assessment forms transmitted to the Armed Forces Health Surveillance Center generally corresponded to times of departure and return of large numbers of deployers. Between April 2006 and December 2011, the number of post-deployment reassessment (PDHRA) forms per month ranged from 15,309 to 36,845 (**Table 1, Figure 1**).

During the past 12 months, the proportions of returned deployers who rated their health as “fair” or “poor” were 8-10% on post-deployment health assessment questionnaires and 10-13% on PDHRA questionnaires (**Figure 2**).

In general, on post-deployment assessments and reassessments, deployers in the Marine Corps and in reserve components were more likely than their respective counterparts to report health and exposure-related concerns (**Table 2, Figure 3**). With the exception of Army and Air Force active component members, both active and reserve component members were more likely to report exposure concerns three to six months after, compared to the time of return from deployment (**Table 2**).

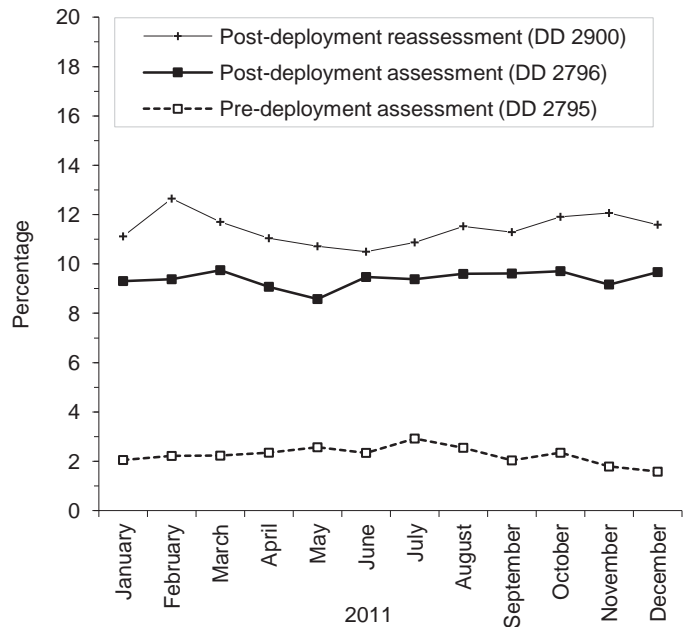
At the time of return from deployment, soldiers serving in the active component of the Army were the most likely of all deployers to receive mental health referrals; however, three to six months after returning, reservists were more likely than active component service members to receive mental health referrals (**Table 2**).

Finally, during the past three years, reserve component members have been more likely than active component service members to report “exposure concerns” on postdeployment assessments and reassessments (**Figure 3**).

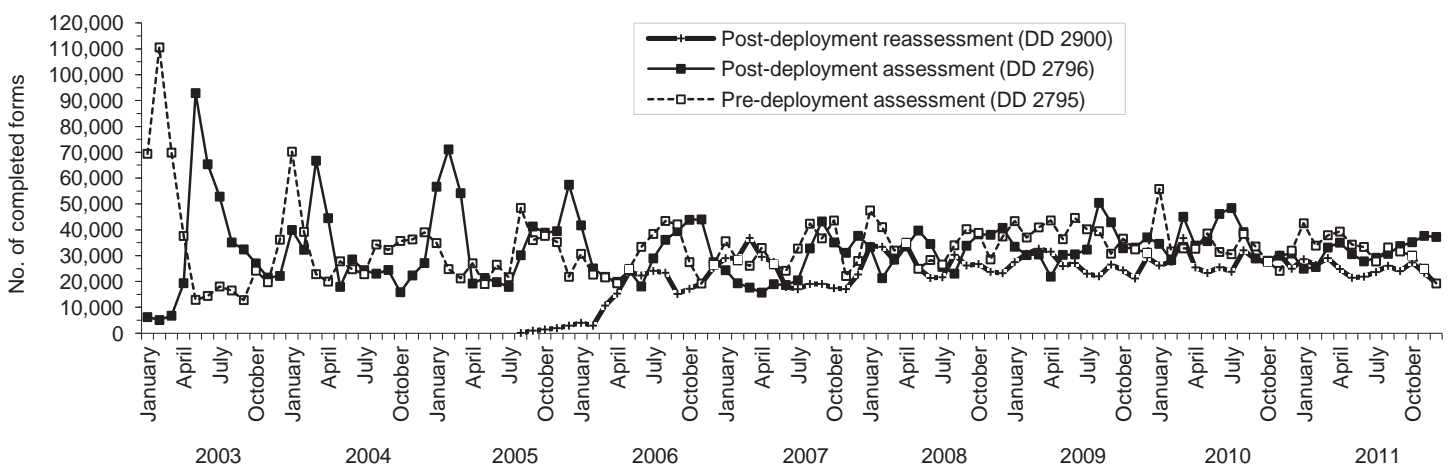
**Table 1.** Deployment-related health assessment forms, by month, U.S. Armed Forces, January 2011-December 2011

	Pre-deployment assessment DD2795		Post-deployment assessment DD2796		Post-deployment reassessment DD2900	
	No.	%	No.	%	No.	%
<b>Total</b>	<b>387,938</b>	<b>100</b>	<b>380,698</b>	<b>100</b>	<b>295,855</b>	<b>100</b>
<b>2011</b>						
January	42,524	11.0	24,941	6.6	28,619	9.7
February	33,864	8.7	25,605	6.7	26,384	8.9
March	37,891	9.8	33,136	8.7	29,056	9.8
April	39,295	10.1	35,013	9.2	24,820	8.4
May	34,254	8.8	30,573	8.0	21,436	7.2
June	33,364	8.6	27,786	7.3	21,861	7.4
July	27,746	7.2	29,167	7.7	23,654	8.0
August	33,161	8.5	30,696	8.1	26,068	8.8
September	31,615	8.1	33,707	8.9	24,009	8.1
October	30,037	7.7	35,199	9.2	27,384	9.3
November	24,949	6.4	37,648	9.9	23,334	7.9
December	19,238	5.0	37,227	9.8	19,230	6.5

**Figure 2.** Proportion of deployment health assessment forms with self-assessed health status as “fair” or “poor”, U.S. Armed Forces, January 2011-December 2011



**Figure 1.** Total deployment health assessment and reassessment forms, by month, U.S. Armed Forces, January 2003-December 2011



Data Source: Defense Medical Surveillance System

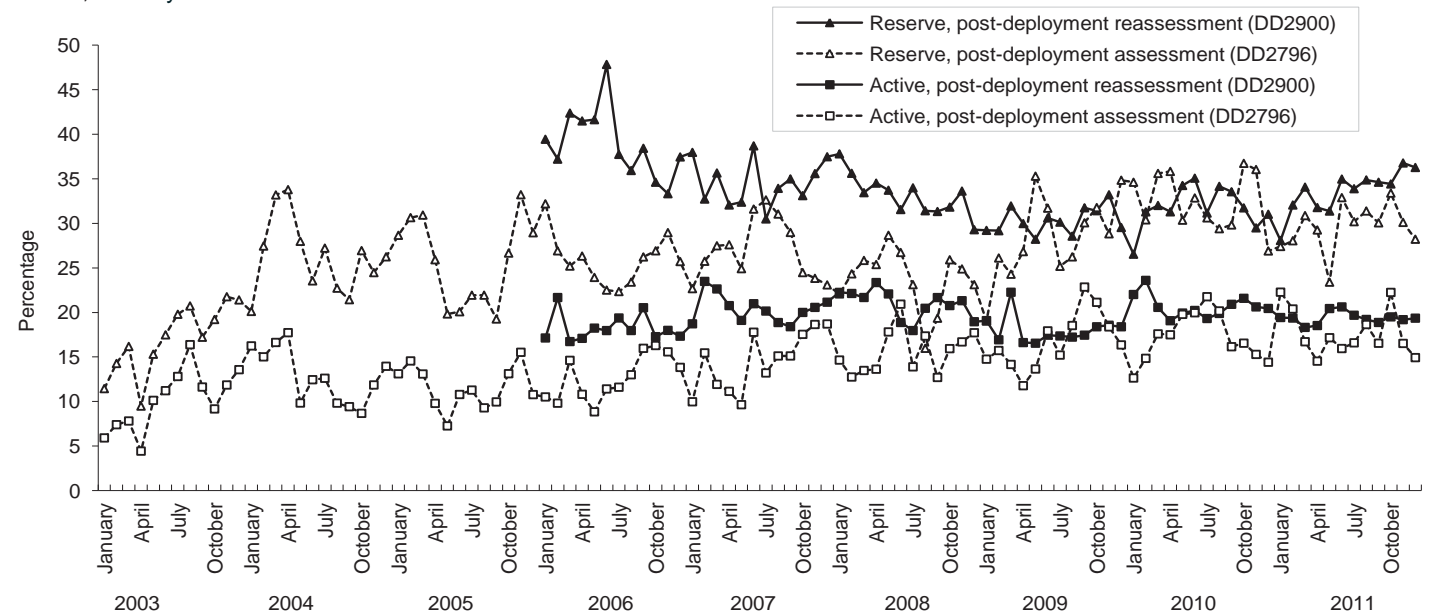
**Table 2.** Percentage of service members who endorsed selected questions/received referrals on health assessment forms, U.S. Armed Forces, January 2011-December 2011

	Army			Navy			Air Force			Marine Corps			All service members		
	Pre-deploy DD2795	Post-deploy DD2796	Reassessmt DD2900	Pre-deploy DD2795	Post-deploy DD2796	Reassessmt DD2900	Pre-deploy DD2795	Post-deploy DD2796	Reassessmt DD2900	Pre-deploy DD2795	Post-deploy DD2796	Reassessmt DD2900	Pre-deploy DD2795	Post-deploy DD2796	Reassessmt DD2900
<b>Active component</b>	n=138,512	n=134,099	n=117,868	n=16,802	n=18,997	n=18,910	n=60,397	n=55,259	n=47,781	n=38,209	n=37,187	n=33,185	n=253,920	n=245,542	n=217,744
	%	%	%	%	%	%	%	%	%	%	%	%	%	%	%
General health "fair" or "poor"	3.9	10.9	13.7	1.3	4.4	6.2	0.7	3.4	4.0	1.4	8.3	10.6	2.6	8.3	10.4
Health concerns, not wound or injury	14.7	25.2	24.0	3.2	12.1	14.6	2.7	7.1	11.3	2.8	13.9	22.0	9.3	18.4	20.1
Health worse now than before deployed	na	23.5	25.4	na	10.5	13.3	na	8.7	8.9	na	19.0	22.1	na	18.5	20.2
Exposure concerns	na	17.9	17.8	na	16.9	23.2	na	14.8	14.7	na	19.7	29.3	na	17.4	19.4
PTSD symptoms (2 or more)	na	11.7	12.7	na	5.0	8.5	na	2.7	2.9	na	8.5	13.2	na	8.7	10.3
Depression symptoms (any)	na	29.5	30.5	na	20.0	26.3	na	12.2	13.8	na	27.6	33.8	na	24.6	27.0
Referral indicated by provider (any)	5.4	39.0	26.8	3.1	19.0	16.7	1.9	17.9	8.7	2.5	25.2	23.5	4.0	30.6	21.4
Mental health referral indicated <sup>a</sup>	1.7	10.2	12.1	0.5	2.3	6.2	0.5	2.3	3.0	0.2	2.8	7.1	1.1	6.7	8.8
Medical visit following referral <sup>b</sup>	98.4	99.4	97.6	92.4	85.8	92.1	99.0	98.7	99.7	53.4	83.9	91.4	93.8	96.3	96.2
	Army			Navy			Air Force			Marine Corps			All service members		
	Pre-deploy DD2795	Post-deploy DD2796	Reassessmt DD2900	Pre-deploy DD2795	Post-deploy DD2796	Reassessmt DD2900	Pre-deploy DD2795	Post-deploy DD2796	Reassessmt DD2900	Pre-deploy DD2795	Post-deploy DD2796	Reassessmt DD2900	Pre-deploy DD2795	Post-deploy DD2796	Reassessmt DD2900
<b>Reserve component</b>	n=56,691	n=58,158	n=51,276	n=3,830	n=5,069	n=7,046	n=15,046	n=12,559	n=13,870	n=2,428	n=3,709	n=2,663	n=77,995	n=79,495	n=74,855
	%	%	%	%	%	%	%	%	%	%	%	%	%	%	%
General health "fair" or "poor"	0.9	11.6	16.4	0.3	7.8	9.2	0.3	5.5	5.8	0.8	14.9	13.3	0.8	10.6	13.6
Health concerns, not wound or injury	14.3	35.9	43.0	1.6	27.8	34.6	0.8	9.5	17.8	3.0	38.2	43.5	10.7	31.3	37.5
Health worse now than before deployed	na	26.3	32.0	na	21.1	22.5	na	14.0	12.6	na	34.2	31.9	na	24.4	27.5
Exposure concerns	na	31.0	35.5	na	38.9	40.2	na	19.5	22.1	na	30.2	35.7	na	29.6	33.4
PTSD symptoms (2 or more)	na	10.4	19.9	na	7.6	13.8	na	3.5	3.9	na	12.5	23.3	na	9.2	16.4
Depression symptoms (any)	na	27.8	33.3	na	25.8	29.0	na	14.2	15.5	na	37.7	35.0	na	26.0	29.7
Referral indicated by provider (any)	3.0	41.9	51.9	2.0	39.1	30.8	0.9	23.1	12.8	2.6	39.0	41.6	2.5	38.6	42.3
Mental health referral indicated <sup>a</sup>	0.4	6.4	22.2	0.1	3.5	12.3	0.1	1.9	3.2	0.1	5.2	19.1	0.3	5.4	17.7
Medical visit following referral <sup>b</sup>	83.4	99.0	42.5	97.9	97.2	42.3	59.6	72.0	47.3	62.9	75.8	46.1	82.0	94.8	42.9

<sup>a</sup>Includes behavioral health, combat stress and substance abuse referrals.

<sup>b</sup>Record of inpatient or outpatient visit within 6 months after referral.

**Figure 3.** Proportion of service members who endorsed exposure concerns on post-deployment health assessments, U.S. Armed Forces, January 2003-December 2011



Data Source: Defense Medical Surveillance System