

Deployment Health Assessments

U.S. Armed Forces

February 2012

(Data through January 2012)

Armed Forces Health Surveillance Center

Update: Deployment Health Assessments, U.S. Armed Forces, January 2012

Since January 2003, peaks and troughs in the numbers of pre- and post-deployment health assessment forms transmitted to the Armed Forces Health Surveillance Center generally corresponded to times of departure and return of large numbers of deployers. Between April 2006 and December 2011, the number of post-deployment reassessment (PDHRA) forms per month ranged from 15,309 to 36,845 (**Table 1, Figure 1**).

During the past 12 months, the proportions of returned deployers who rated their health as “fair” or “poor” were 8-11% on post-deployment health assessment questionnaires and 10-13% on PDHRA questionnaires (**Figure 2**).

In general, on post-deployment assessments and reassessments, deployers in the Marine Corps and in reserve components were more likely than their respective counterparts to report health and exposure-related concerns (**Table 2, Figure 3**). With the exception of Army and Air Force active component members, both active and reserve component members were more likely to report exposure concerns three to six months after, compared to the time of return from deployment (**Table 2**).

At the time of return from deployment, soldiers serving in the active component of the Army were the most likely of all deployers to receive mental health referrals; however, three to six months after returning, reservists were more likely than active component service members to receive mental health referrals (**Table 2**).

Finally, during the past three years, reserve component members have been more likely than active component service members to report “exposure concerns” on postdeployment assessments and reassessments (**Figure 3**).

Table 1. Deployment-related health assessment forms, by month, U.S. Armed Forces, February 2011-January 2012

	Pre-deployment assessment DD2795		Post-deployment assessment DD2796		Post-deployment reassessment DD2900	
	No.	%	No.	%	No.	%
Total	372,733	100	377,351	100	287,759	100
2011						
February	33,880	9.1	25,613	6.8	26,395	9.2
March	37,932	10.2	33,141	8.8	29,072	10.1
April	39,322	10.5	35,026	9.3	24,844	8.6
May	34,324	9.2	30,621	8.1	21,463	7.5
June	33,466	9.0	27,814	7.4	21,898	7.6
July	27,784	7.5	29,191	7.7	23,696	8.2
August	33,225	8.9	30,752	8.1	26,147	9.1
September	31,653	8.5	33,765	8.9	24,114	8.4
October	30,130	8.1	35,288	9.4	27,649	9.6
November	25,313	6.8	37,805	10.0	23,632	8.2
December	21,445	5.8	40,062	10.6	20,455	7.1
2012						
January	24,259	6.5	18,273	4.8	18,394	6.4

Figure 2. Proportion of deployment health assessment forms with self-assessed health status as “fair” or “poor”, U.S. Armed Forces, February 2011-January 2012

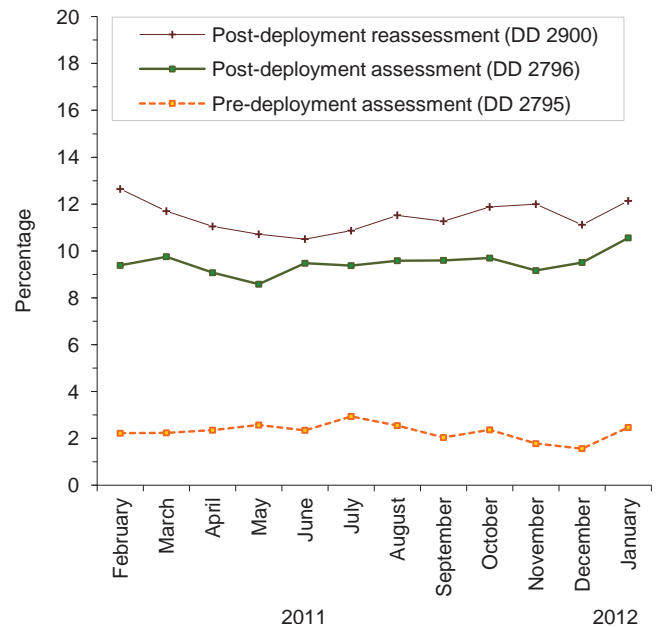
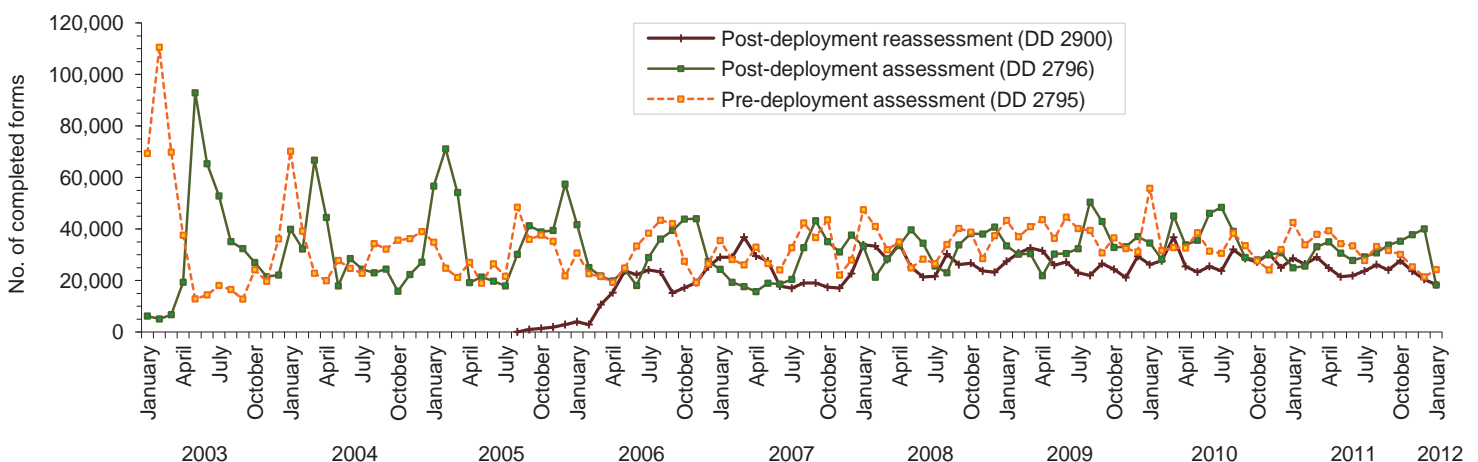


Figure 1. Total deployment health assessment and reassessment forms, by month, U.S. Armed Forces, January 2003-January 2012



Data Source: Defense Medical Surveillance System

