

# Deployment Health Assessments

**U.S. Armed Forces**

**March 2012**

(Data through February 2012)

Armed Forces Health Surveillance Center

# Update: Deployment Health Assessments, U.S. Armed Forces, January 2012

Since January 2003, peaks and troughs in the numbers of pre- and post-deployment health assessment forms transmitted to the Armed Forces Health Surveillance Center generally corresponded to times of departure and return of large numbers of deployers. Between April 2006 and December 2011, the number of post-deployment reassessment (PDHRA) forms per month ranged from 15,309 to 36,845 (**Table 1, Figure 1**).

During the past 12 months, the proportions of returned deployers who rated their health as “fair” or “poor” were 8-10% on post-deployment health assessment questionnaires and 10-13% on PDHRA questionnaires (**Figure 2**).

In general, on post-deployment assessments and reassessments, deployers in the Army and Marine Corps and in reserve components were more likely than their respective counterparts to report health and exposure-related concerns (**Table 2, Figure 3**). With the exception of Air Force members, both active and reserve component members were more likely to report exposure concerns three to six months after, compared to the time of return from deployment (**Table 2**).

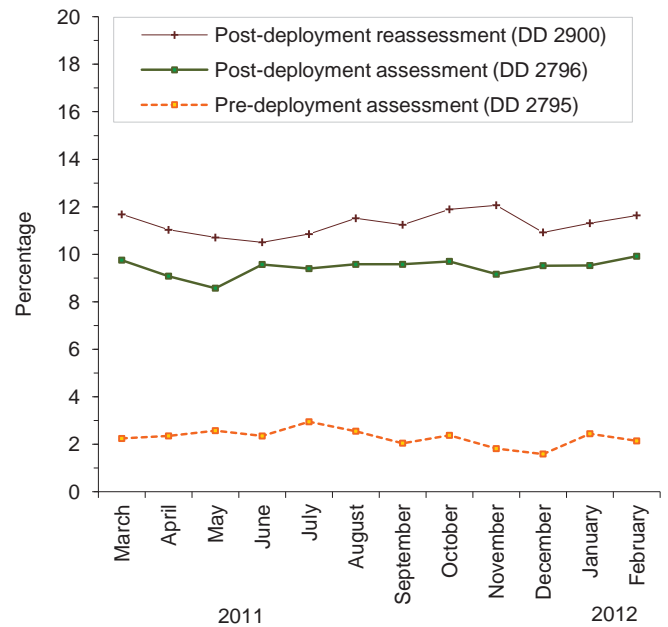
At the time of return from deployment, soldiers serving in the active component of the Army were the most likely of all deployers to receive mental health referrals; however, three to six months after returning, reservists in the Navy and Marine Corps were more likely than their active component counterparts to receive mental health referrals (**Table 2**).

Finally, during the past three years, reserve component members have been more likely than active component service members to report “exposure concerns” on postdeployment assessments and reassessments (**Figure 3**).

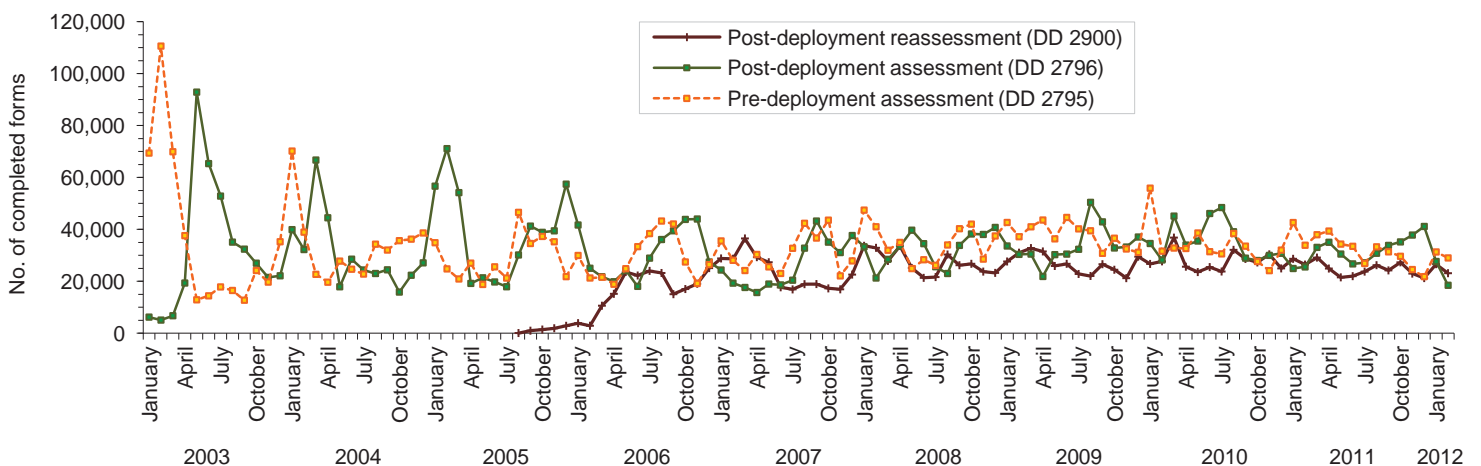
**Table 1.** Deployment-related health assessment forms, by month, U.S. Armed Forces, March 2011-February 2012

	Pre-deployment assessment DD2795		Post-deployment assessment DD2796		Post-deployment reassessment DD2900	
	No.	%	No.	%	No.	%
<b>Total</b>	373,053	100	377,487	100	293,003	100
<b>2011</b>						
March	37,956	10.2	33,083	8.8	29,145	9.9
April	39,366	10.6	35,054	9.3	24,929	8.5
May	34,351	9.2	30,509	8.1	21,532	7.3
June	33,501	9.0	26,731	7.1	21,982	7.5
July	26,877	7.2	27,149	7.2	23,741	8.1
August	33,298	8.9	30,824	8.2	26,209	8.9
September	31,362	8.4	33,844	9.0	24,209	8.3
October	29,649	7.9	35,192	9.3	27,312	9.3
November	24,543	6.6	37,827	10.0	22,976	7.8
December	21,810	5.8	41,145	10.9	21,240	7.2
<b>2012</b>						
January	31,324	8.4	27,648	7.3	26,599	9.1
February	29,016	7.8	18,481	4.9	23,129	7.9

**Figure 2.** Proportion of deployment health assessment forms with self-assessed health status as “fair” or “poor”, U.S. Armed Forces, March 2011-February 2012



**Figure 1.** Total deployment health assessment and reassessment forms, by month, U.S. Armed Forces, January 2003-February 2012



Data Source: Defense Medical Surveillance System

**Table 2.** Percentage of service members who endorsed selected questions/received referrals on health assessment forms, U.S. Armed Forces, March 2011-February 2012

Active component	Army			Navy			Air Force			Marine Corps			All service members		
	Pre-deploy DD2795	Post-deploy DD2796	Reassessmt DD2900	Pre-deploy DD2795	Post-deploy DD2796	Reassessmt DD2900	Pre-deploy DD2795	Post-deploy DD2796	Reassessmt DD2900	Pre-deploy DD2795	Post-deploy DD2796	Reassessmt DD2900	Pre-deploy DD2795	Post-deploy DD2796	Reassessmt DD2900
	n=	n=	n=	n=	n=	n=	n=	n=	n=	n=	n=	n=	n=	n=	n=
	138,512	134,099	117,868	16,802	18,997	18,910	60,397	55,259	47,781	38,209	37,187	33,185	253,920	245,542	217,744
	%	%	%	%	%	%	%	%	%	%	%	%	%	%	%
General health "fair" or "poor"	3.9	11.0	13.8	1.3	4.6	6.0	0.7	3.3	3.9	1.4	8.1	10.3	2.6	8.4	10.3
Health concerns, not wound or injury	15.5	25.5	24.1	3.3	11.8	14.9	2.7	7.2	11.2	3.0	13.6	21.5	9.8	18.6	19.9
Health worse now than before deployed	0.0	23.7	26.3	na	10.7	13.4	na	8.9	9.0	na	18.5	21.6	na	18.7	20.4
Exposure concerns	0.0	17.3	17.7	na	15.8	23.0	na	16.0	14.7	na	17.1	29.1	na	16.9	19.2
PTSD symptoms (2 or more)	0.0	11.9	13.3	na	5.1	8.4	na	2.8	3.0	na	8.2	13.1	na	8.8	10.5
Depression symptoms (any)	0.0	29.4	30.7	na	20.3	26.7	na	12.1	13.5	na	27.9	33.4	na	24.7	26.8
Referral indicated by provider (any)	5.5	39.6	26.0	3.3	19.3	17.9	2.1	18.5	9.6	2.5	24.9	23.6	4.1	31.2	21.1
Mental health referral indicated <sup>a</sup>	1.8	10.5	10.1	0.5	2.4	6.0	0.5	2.3	3.0	0.2	2.8	7.0	1.2	6.9	7.6
Medical visit following referral <sup>b</sup>	98.5	99.6	98.1	92.8	85.6	90.9	98.5	98.7	99.9	59.7	81.6	90.1	94.7	96.8	96.2

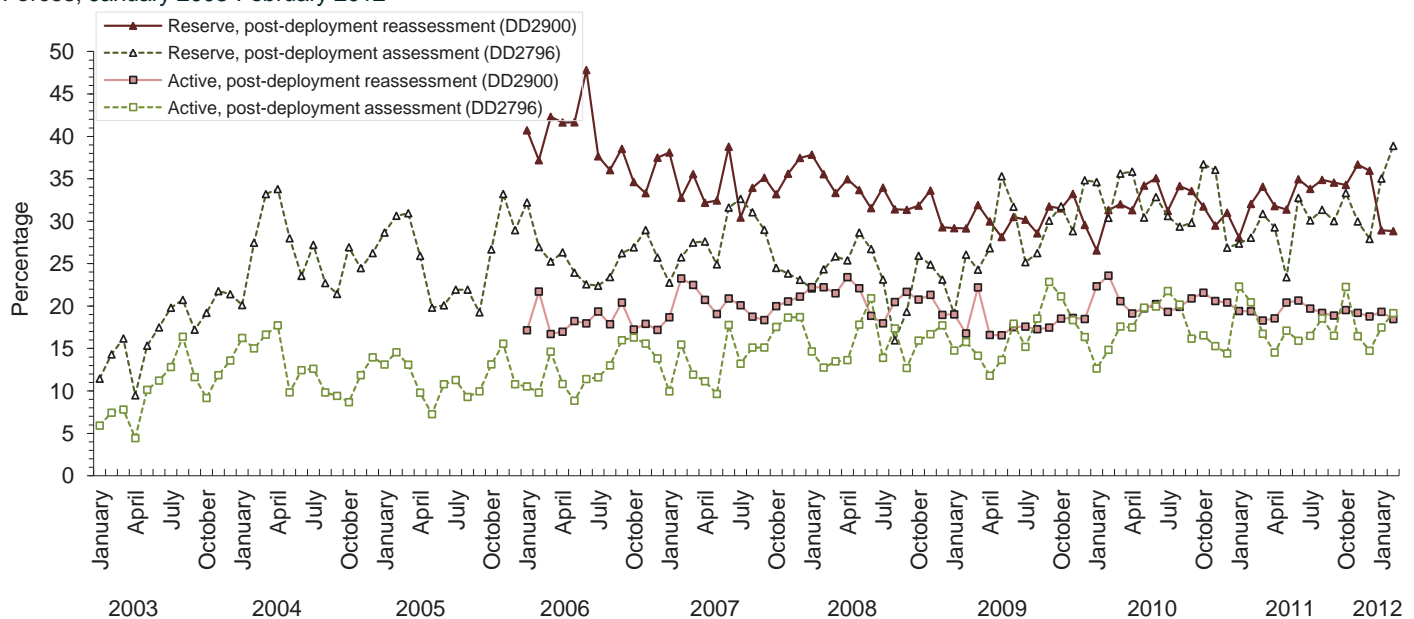
  

Reserve component	Army			Navy			Air Force			Marine Corps			All service members		
	Pre-deploy DD2795	Post-deploy DD2796	Reassessmt DD2900	Pre-deploy DD2795	Post-deploy DD2796	Reassessmt DD2900	Pre-deploy DD2795	Post-deploy DD2796	Reassessmt DD2900	Pre-deploy DD2795	Post-deploy DD2796	Reassessmt DD2900	Pre-deploy DD2795	Post-deploy DD2796	Reassessmt DD2900
	n=	n=	n=	n=	n=	n=	n=	n=	n=	n=	n=	n=	n=	n=	n=
	56,691	58,158	51,276	3,830	5,069	7,046	15,046	12,559	13,870	2,428	3,709	2,663	77,995	79,495	74,855
	%	%	%	%	%	%	%	%	%	%	%	%	%	%	%
General health "fair" or "poor"	0.9	11.8	16.3	0.2	6.9	9.2	0.3	5.5	5.7	0.7	14.2	13.5	0.8	10.6	13.5
Health concerns, not wound or injury	11.9	35.9	42.7	1.5	29.0	34.6	0.8	9.5	18.1	3.0	31.0	42.6	8.8	30.9	37.4
Health worse now than before deployed	0.0	26.6	32.0	na	19.0	22.6	na	13.7	12.7	na	31.9	31.5	na	24.3	27.5
Exposure concerns	0.0	32.0	35.2	na	33.8	39.8	na	22.4	22.1	na	30.0	36.0	na	30.4	33.3
PTSD symptoms (2 or more)	0.0	10.4	19.3	na	6.8	13.6	na	3.5	3.7	na	12.1	21.9	na	9.1	16.0
Depression symptoms (any)	0.0	27.9	33.4	na	23.9	29.9	na	13.9	15.5	na	35.1	37.8	na	25.7	29.9
Referral indicated by provider (any)	3.2	42.7	52.1	1.8	36.2	31.2	0.8	23.4	13.5	2.1	33.8	43.7	2.6	38.8	42.7
Mental health referral indicated <sup>a</sup>	0.5	6.5	22.3	0.1	3.7	12.7	0.1	1.9	3.5	0.1	4.9	20.7	0.4	5.5	17.9
Medical visit following referral <sup>b</sup>	77.2	99.1	41.5	97.4	96.2	40.6	50.7	69.1	48.2	80.4	79.5	43.8	76.3	95.5	41.9

<sup>a</sup>Includes behavioral health, combat stress and substance abuse referrals.

<sup>b</sup>Record of inpatient or outpatient visit within 6 months after referral.

**Figure 3.** Proportion of service members who endorsed exposure concerns on post-deployment health assessments, U.S. Armed Forces, January 2003-February 2012



Data Source: Defense Medical Surveillance System