

Deployment Health Assessments

U.S. Armed Forces

March 2013

(Data through February 2013)

Armed Forces Health Surveillance Center

Update: Deployment Health Assessments, U.S. Armed Forces, March 2013

Since January 2003, peaks and troughs in the numbers of pre- and post-deployment health assessment forms transmitted to the Armed Forces Health Surveillance Center generally corresponded to times of departure and return of large numbers of deployers. Between April 2006 and February 2013, the number of post-deployment reassessment (PDHRA) forms per month ranged from 15,309 to 45,768 (Table 1, Figure 1).

During the past 12 months, the proportions of returned deployers who rated their health as “fair” or “poor” were 7-10 percent on post-deployment health assessment questionnaires and 10-13 percent on PDHRA questionnaires (Figure 2).

In general, on post-deployment assessments and reassessments, deployers in reserve components were more likely than their respective counterparts to report health and exposure-related concerns (Table 2, Figure 3). Active component members of the Navy and Marine Corps and reserve component members of the Army and Marine Corps were more likely to report exposure concerns three to six months after, compared to the time of return from deployment (Table 2).

At the time of return from deployment, soldiers serving in the active component of the Army were the most likely of all deployers to receive mental health referrals; three to six months after returning, reservists in all services were more likely than their active component counterparts to receive mental health referrals (Table 2).

Finally, during the past three years, reserve component members have been more likely than active component service members to report “exposure concerns” on post-deployment assessments and reassessments (Figure 3).

Table 1. Deployment-related health assessment forms, by month, U.S. Armed Forces, March 2012-February 2013

	Pre-deployment assessment DD2795		Post-deployment assessment DD2796		Post-deployment reassessment DD2900	
	No.	%	No.	%	No.	%
Total	353,775	100	288,645	100	413,250	100
2012						
March	29,326	8.3	30,133	10.4	42,207	10.2
April	28,285	8.0	27,625	9.6	45,768	11.1
May	28,198	8.0	28,599	9.9	39,397	9.5
June	21,446	6.1	25,535	8.8	35,281	8.5
July	26,277	7.4	24,252	8.4	34,736	8.4
August	31,243	8.8	24,660	8.5	40,918	9.9
September	28,629	8.1	24,353	8.4	34,063	8.2
October	25,879	7.3	23,925	8.3	31,102	7.5
November	30,144	8.5	19,233	6.7	29,725	7.2
December	23,263	6.6	19,923	6.9	27,859	6.7
2013						
January	40,773	11.5	23,631	8.2	28,833	7.0
February	40,312	11.4	16,776	5.8	23,361	5.7

Figure 2. Proportion of deployment health assessment forms with self-assessed health status as “fair” or “poor,” U.S. Armed Forces, March 2012-February 2013

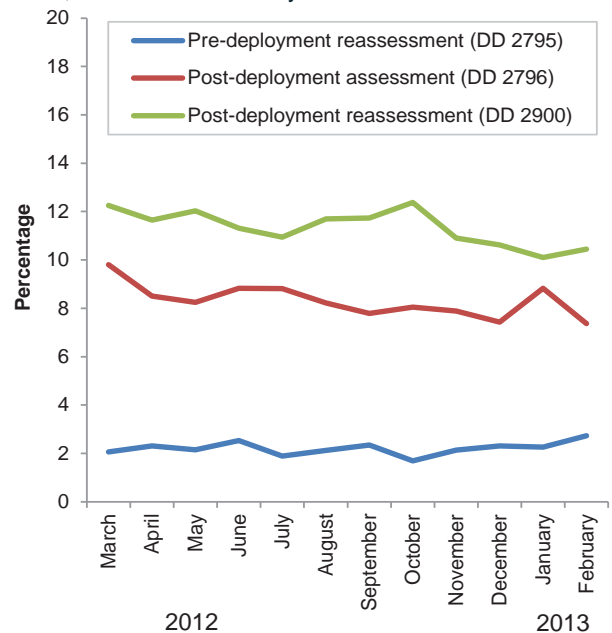
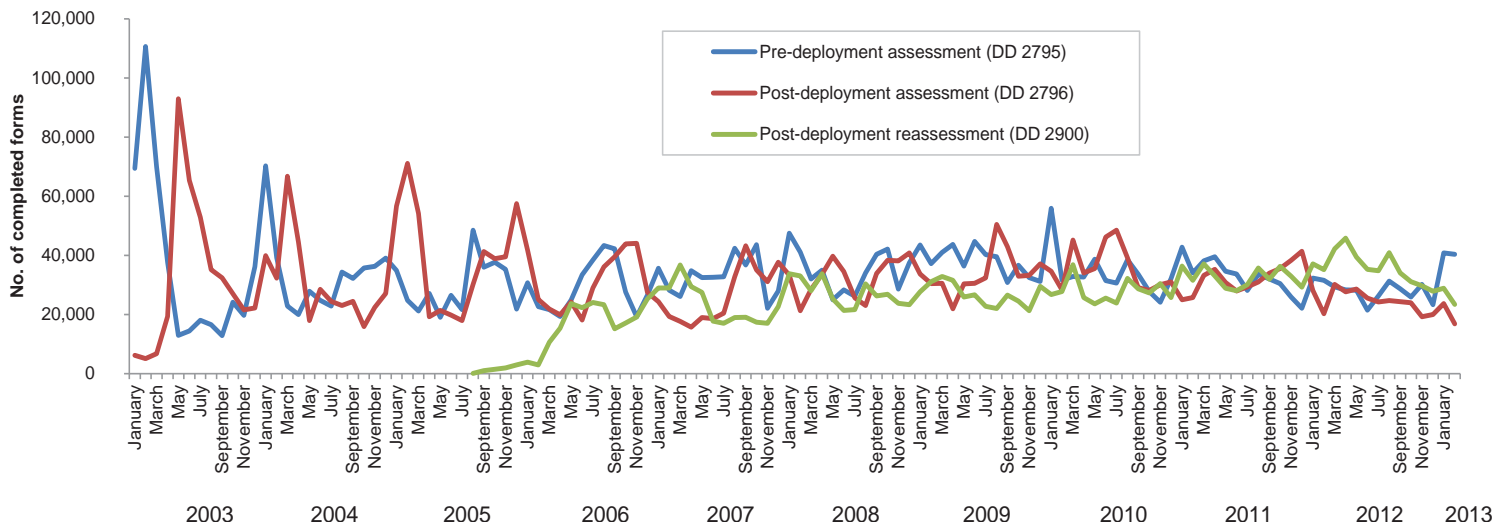


Figure 1. Total deployment health assessment and reassessment forms, by month, U.S. Armed Forces, January 2003-February 2013



Data Source: Defense Medical Surveillance System

Table 2. Percentage of service members who endorsed selected questions/received referrals on health assessment forms, U.S. Armed Forces, March 2012-February 2013

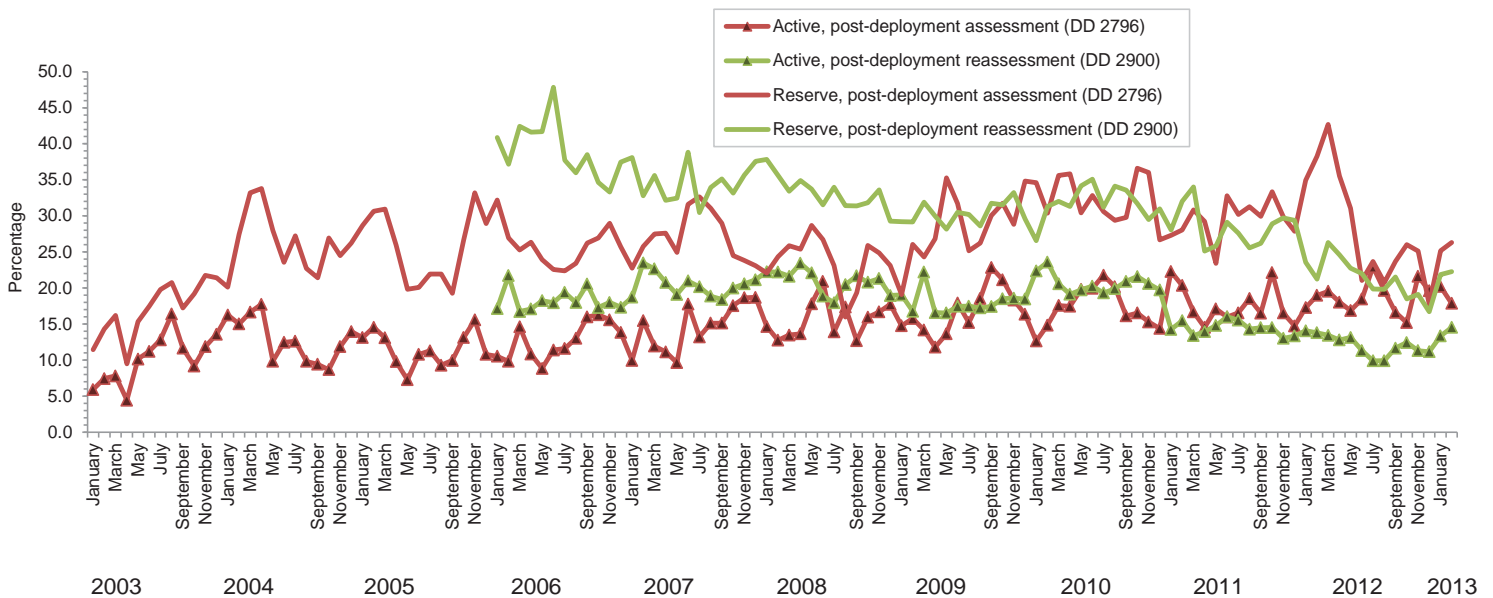
	Army			Navy			Air Force			Marine Corps			All service members		
	Pre-deploy DD2795 n= %	Post-deploy DD2796 n= %	Reassessmt DD2900 n= %	Pre-deploy DD2795 n= %	Post-deploy DD2796 n= %	Reassessmt DD2900 n= %	Pre-deploy DD2795 n= %	Post-deploy DD2796 n= %	Reassessmt DD2900 n= %	Pre-deploy DD2795 n= %	Post-deploy DD2796 n= %	Reassessmt DD2900 n= %	Pre-deploy DD2795 n= %	Post-deploy DD2796 n= %	Reassessmt DD2900 n= %
Active component	122,987 %	99,292 %	115,316 %	10,976 %	11,978 %	20,702 %	51,723 %	42,467 %	93,066 %	27,078 %	32,396 %	48,070 %	212,764 %	186,133 %	277,154 %
General health "fair" or "poor"	3.5	10.0	14.1	1.0	4.7	4.0	0.8	3.3	0.8	1.8	6.5	6.7	2.5	7.5	7.6
Health concerns, not wound or injury	12.6	26.0	24.0	2.0	13.6	8.1	1.6	7.1	1.1	1.5	14.4	10.6	8.0	18.9	12.8
Health worse now than before deployed	na	23.8	27.6	na	22.1	18.3	na	18.3	9.9	na	22.8	22.7	na	22.2	20.1
Exposure concerns	na	19.8	16.7	na	17.8	16.0	na	20.2	2.7	na	16.0	18.9	na	19.1	12.3
PTSD symptoms (2 or more)	na	11.9	14.1	na	6.0	6.9	na	2.5	2.3	na	6.5	8.6	na	8.4	8.7
Depression symptoms (any)	na	28.5	31.8	na	19.8	20.8	na	10.9	7.8	na	24.6	24.7	na	23.2	21.7
Referral indicated by provider (any)	4.9	39.4	23.5	4.1	25.0	13.2	2.7	21.7	3.5	5.6	26.9	14.7	4.4	32.2	14.5
Mental health referral indicated ^a	1.7	9.7	8.1	0.7	3.3	6.4	0.4	1.6	2.4	0.4	2.7	7.1	1.2	6.2	5.9
Medical visit following referral ^b	99.6	99.7	98.7	92.6	93.4	93.4	98.0	98.3	99.1	65.4	85.7	86.2	94.9	97.0	96.4

	Army			Navy			Air Force			Marine Corps			All service members		
	Pre-deploy DD2795 n= %	Post-deploy DD2796 n= %	Reassessmt DD2900 n= %	Pre-deploy DD2795 n= %	Post-deploy DD2796 n= %	Reassessmt DD2900 n= %	Pre-deploy DD2795 n= %	Post-deploy DD2796 n= %	Reassessmt DD2900 n= %	Pre-deploy DD2795 n= %	Post-deploy DD2796 n= %	Reassessmt DD2900 n= %	Pre-deploy DD2795 n= %	Post-deploy DD2796 n= %	Reassessmt DD2900 n= %
Reserve component	40,995 %	46,226 %	49,512 %	3,728 %	3,263 %	6,417 %	12,432 %	12,623 %	24,437 %	924 %	2,171 %	3,621 %	58,079 %	64,283 %	83,987 %
General health "fair" or "poor"	0.8	10.8	14.6	0.2	6.8	5.8	0.4	4.8	1.3	0.9	8.6	10.0	0.7	9.3	9.9
Health concerns, not wound or injury	10.4	28.5	39.2	0.7	36.8	17.5	0.5	9.4	2.8	0.6	25.6	32.9	7.5	25.0	26.7
Health worse now than before deployed	na	25.3	30.4	na	29.2	20.3	na	21.2	11.8	na	34.9	29.4	na	25.0	24.2
Exposure concerns	na	26.9	30.0	na	35.4	22.1	na	28.4	5.5	na	27.8	31.8	na	27.7	22.3
PTSD symptoms (2 or more)	na	9.2	16.9	na	7.7	8.4	na	2.3	2.3	na	6.8	16.6	na	7.7	12.0
Depression symptoms (any)	na	25.6	31.0	na	23.1	20.6	na	11.7	7.8	na	29.9	31.4	na	22.9	23.4
Referral indicated by provider (any)	3.1	43.1	50.0	4.7	39.4	23.5	1.3	23.5	4.0	2.4	43.0	38.1	2.8	39.1	34.1
Mental health referral indicated ^a	0.5	7.4	21.6	0.4	5.5	11.7	0.2	1.1	2.2	0.3	4.1	18.3	0.4	5.9	15.1
Medical visit following referral ^b	75.5	97.3	47.0	94.4	96.8	51.8	57.4	67.1	52.6	75.0	82.4	52.1	74.9	93.2	47.7

^aIncludes behavioral health, combat stress and substance abuse referrals.

^bRecord of inpatient or outpatient visit within 6 months after referral.

Figure 3. Proportion of service members who endorsed exposure concerns on post-deployment health assessments, U.S. Armed Forces, January 2003-February 2013



Data Source: Defense Medical Surveillance System