

# Deployment Health Assessments

U.S. Armed Forces

October 2013

(Data through September 2013)

Armed Forces Health Surveillance Center

# Update: Deployment Health Assessments, U.S. Armed Forces, October 2013

Since January 2003, peaks and troughs in the numbers of pre- and post-deployment health assessment forms transmitted to the Armed Forces Health Surveillance Center generally corresponded to times of departure and return of large numbers of deployers. Between April 2006 and September 2013, the number of post-deployment reassessment (PDHRA) forms per month ranged from 15,309 to 36,845 (Figure 1).

During the past 12 months, the proportions of returned deployers who rated their health as “fair” or “poor” were 6-9 percent on post-deployment health assessment questionnaires and 9-13 percent on PDHRA questionnaires (Figure 2). The proportion of pre-deployment service members who rated their health as “fair” or “poor” increased from approximately 2 percent to 4 percent during the past 12-months.

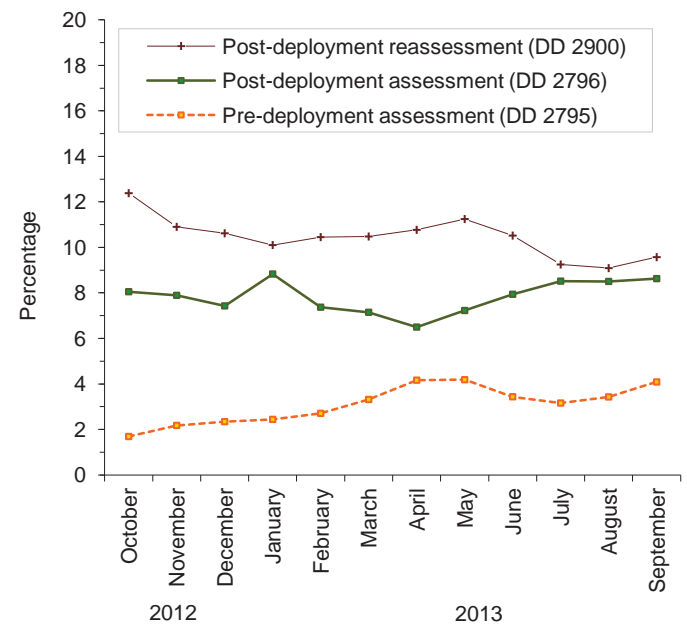
In general, on post-deployment assessments and reassessments, deployers in reserve components were more likely than their respective counterparts to report health and exposure-related concerns (Table 2, Figure 3). Active component Marines and reserve component members of the Army were more likely to report exposure concerns three to six months after, compared to the time of return from deployment (Table 2). At the time of return from deployment, soldiers serving in the active and reserve component of the Army were the most likely of all deployers to receive mental health referrals; three to six months after returning, reservists in all services except the Air Force were more likely than their active component counterparts to receive mental health referrals (Table 2).

Finally, during the past three years, reserve component members have been more likely than active component service members to report “exposure concerns” on post-deployment assessments (Figure 3).

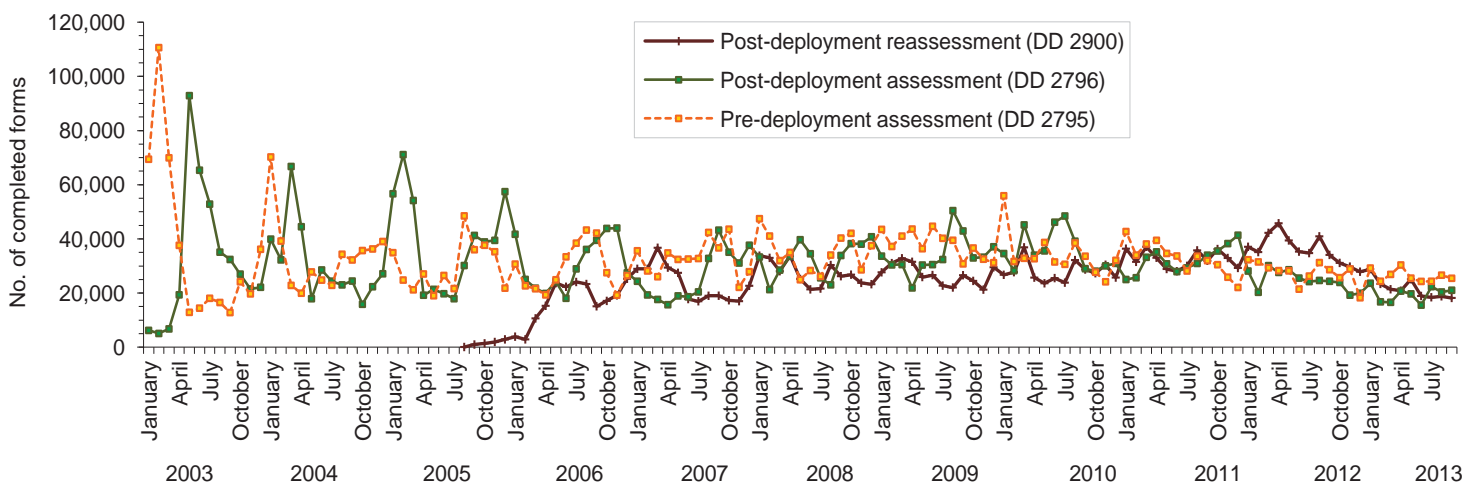
**Table 1.** Deployment-related health assessment forms, by month, U.S. Armed Forces, October 2012-September 2013

	Pre-deployment assessment DD2795		Post-deployment assessment DD2796		Post-deployment reassessment DD2900	
	No.	%	No.	%	No.	%
Total	309,927	100	239,858	100	282,393	100
<b>2012</b>						
October	25,691	8.3	23,925	10.0	31,102	11.0
November	28,893	9.3	19,232	8.0	29,724	10.5
December	18,272	5.9	19,923	8.3	27,854	9.9
<b>2013</b>						
January	29,236	9.4	23,626	9.8	28,823	10.2
February	24,356	7.9	16,767	7.0	23,347	8.3
March	26,893	8.7	16,587	6.9	21,371	7.6
April	30,365	9.8	20,739	8.6	20,843	7.4
May	25,509	8.2	19,700	8.2	25,077	8.9
June	24,296	7.8	15,558	6.5	18,895	6.7
July	24,355	7.9	22,359	9.3	18,417	6.5
August	26,602	8.6	20,400	8.5	18,772	6.6
September	25,459	8.2	21,042	8.8	18,168	6.4

**Figure 2.** Proportion of deployment health assessment forms with self-assessed health status as “fair” or “poor,” U.S. Armed Forces, October 2012-September 2013



**Figure 1.** Total deployment health assessment and reassessment forms, by month, U.S. Armed Forces, January 2003-September 2013



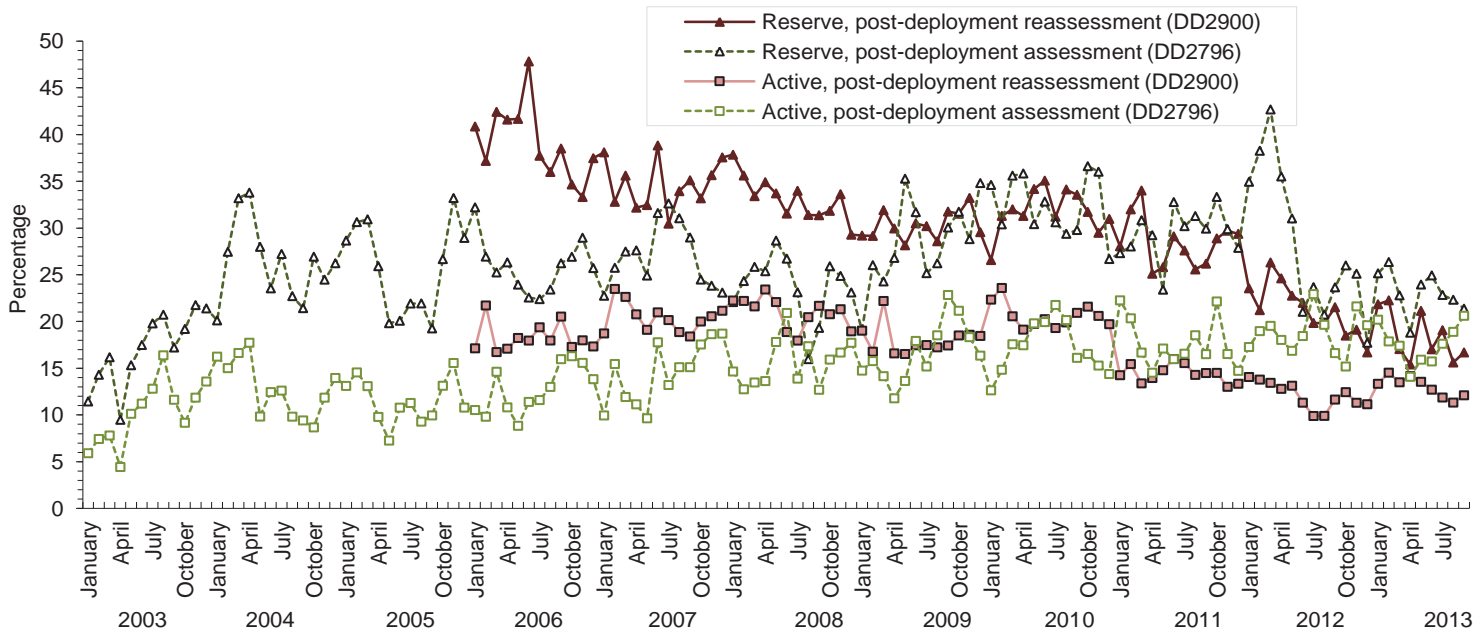
Data Source: Defense Medical Surveillance System

**Table 2.** Percentage of service members who endorsed selected questions/received referrals on health assessment forms, U.S. Armed Forces, October 2012-September 2013

	Army			Navy			Air Force			Marine Corps			All service members		
	Pre-deploy DD2795 n= %	Post-deploy DD2796 n= %	Reassessmt DD2900 n= %	Pre-deploy DD2795 n= %	Post-deploy DD2796 n= %	Reassessmt DD2900 n= %	Pre-deploy DD2795 n= %	Post-deploy DD2796 n= %	Reassessmt DD2900 n= %	Pre-deploy DD2795 n= %	Post-deploy DD2796 n= %	Reassessmt DD2900 n= %	Pre-deploy DD2795 n= %	Post-deploy DD2796 n= %	Reassessmt DD2900 n= %
Active component	129,754 %	89,476 %	85,532 %	9,393 %	9,758 %	14,994 %	49,183 %	43,770 %	69,946 %	25,731 %	24,161 %	29,747 %	214,061 %	167,165 %	200,219 %
General health "fair" or "poor"	4.7	9.8	13.9	1.4	4.9	5.1	1.2	2.9	1.6	2.6	6.1	8.4	3.5	7.1	8.1
Health concerns, not wound or injury	3.9	23.7	10.8	0.5	12.4	2.5	0.3	7.8	0.3	0.3	11.2	4.0	2.5	17.1	5.5
Health worse now than before deployed	0.0	49.1	54.7	na	54.7	55.5	na	49.1	32.5	na	57.4	57.9	na	50.6	47.5
Exposure concerns	0.0	19.6	16.5	na	19.4	16.0	na	15.1	5.0	na	16.5	20.0	na	18.0	13.0
PTSD symptoms (2 or more)	0.0	10.7	13.7	na	5.3	7.4	na	2.5	2.9	na	5.8	10.1	na	7.5	8.9
Depression symptoms (any)	0.0	26.9	29.4	na	16.6	19.9	na	8.9	8.3	na	20.3	24.5	na	20.7	20.6
Referral indicated by provider (any)	8.8	34.9	23.2	7.2	28.7	19.0	4.3	22.4	8.7	7.0	34.6	20.5	7.5	31.2	17.4
Mental health referral indicated <sup>a</sup>	3.1	7.3	14.1	1.0	3.8	14.0	0.6	1.6	6.9	0.8	2.8	15.6	2.1	5.0	11.8
Medical visit following referral <sup>b</sup>	99.6	99.7	98.5	85.4	93.5	91.7	99.6	98.5	99.5	71.1	88.2	88.3	93.2	97.3	96.1
Reserve component	35,797 %	38,786 %	35,231 %	4,182 %	3,599 %	4,599 %	11,146 %	10,166 %	20,762 %	889 %	901 %	1,821 %	52,014 %	53,452 %	62,413 %
General health "fair" or "poor"	0.9	10.7	14.7	0.3	9.4	8.3	0.5	4.1	1.7	1.0	9.3	9.7	0.8	9.4	9.7
Health concerns, not wound or injury	4.6	24.6	16.8	0.2	36.0	5.7	0.1	9.0	1.0	0.3	25.6	8.8	3.2	22.4	10.5
Health worse now than before deployed	0.0	53.5	56.4	na	64.3	54.1	na	53.0	28.9	na	70.0	63.2	na	54.4	47.3
Exposure concerns	0.0	22.6	25.2	na	35.3	26.3	na	20.1	6.2	na	28.6	26.6	na	23.1	19.0
PTSD symptoms (2 or more)	0.0	8.8	15.7	na	8.1	10.9	na	1.9	2.9	na	7.2	16.6	na	7.4	11.1
Depression symptoms (any)	0.0	23.4	27.0	na	20.4	22.7	na	8.5	7.9	na	21.4	28.4	na	20.4	20.4
Referral indicated by provider (any)	4.4	37.8	48.1	6.0	48.1	32.9	2.0	20.7	6.3	4.7	52.6	40.6	4.0	35.5	32.9
Mental health referral indicated <sup>a</sup>	0.8	7.2	35.6	0.4	5.4	27.1	0.2	1.1	5.5	0.6	5.1	32.5	0.7	5.9	24.8
Medical visit following referral <sup>b</sup>	77.5	98.6	47.2	96.2	98.4	57.3	70.9	67.6	53.9	83.3	77.5	37.1	80.2	93.8	47.9

<sup>a</sup>Includes behavioral health, combat stress and substance abuse referrals.  
<sup>b</sup>Record of inpatient or outpatient visit within 6 months after referral.

**Figure 3.** Proportion of service members who endorsed exposure concerns on post-deployment health assessments, U.S. Armed Forces, January 2003-September 2013



Data Source: Defense Medical Surveillance System