

# Deployment Health Assessments

U.S. Armed Forces

January 2014

(Data through December 2013)

Armed Forces Health Surveillance Center

# Update: Deployment Health Assessments, U.S. Armed Forces, January 2014

Since January 2003, peaks and troughs in the numbers of pre- and post-deployment health assessment forms transmitted to the Armed Forces Health Surveillance Center generally corresponded to times of departure and return of large numbers of deployers. Between April 2006 and December 2013, the number of post-deployment reassessment (PDHRA) forms per month ranged from 15,114 to 45,768 (Table 1, Figure 1).

During the past 12 months, the proportions of returned deployers who rated their health as “fair” or “poor” were 6-10 percent on post-deployment health assessment questionnaires and 8-12 percent on PDHRA questionnaires (Figure 2). The proportion of pre-deployment service members who rated their health as “fair” or “poor” increased from approximately 2 percent to 4 percent during the past 12-months.

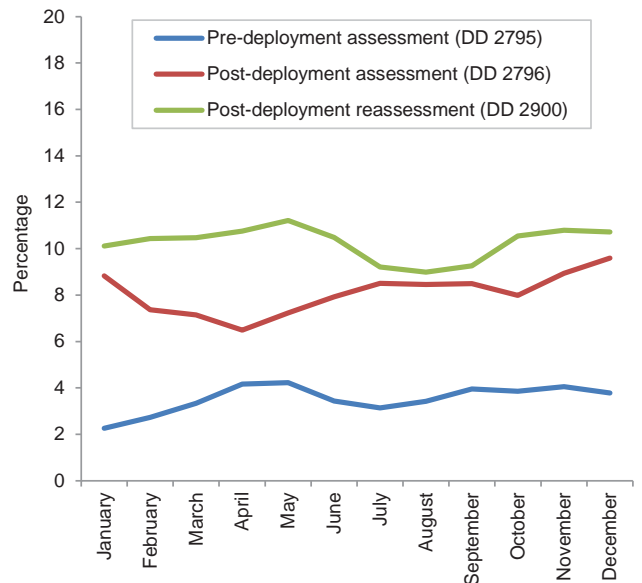
In general, on post-deployment assessments and reassessments, deployers in reserve components were more likely than their respective counterparts to report health and exposure-related concerns (Table 2, Figure 3). Active and reserve component Marines and reserve component members of the Army were more likely to report exposure concerns three to six months after, compared to the time of return from deployment (Table 2). At the time of return from deployment, soldiers serving in the active and reserve component of the Army were the most likely of all deployers to receive mental health referrals; three to six months after returning, reservists in all services except the Air Force were more likely than their active component counterparts to receive mental health referrals (Table 2).

Finally, during the past three years, reserve component members have been more likely than active component service members to report “exposure concerns” on post-deployment assessments (Figure 3).

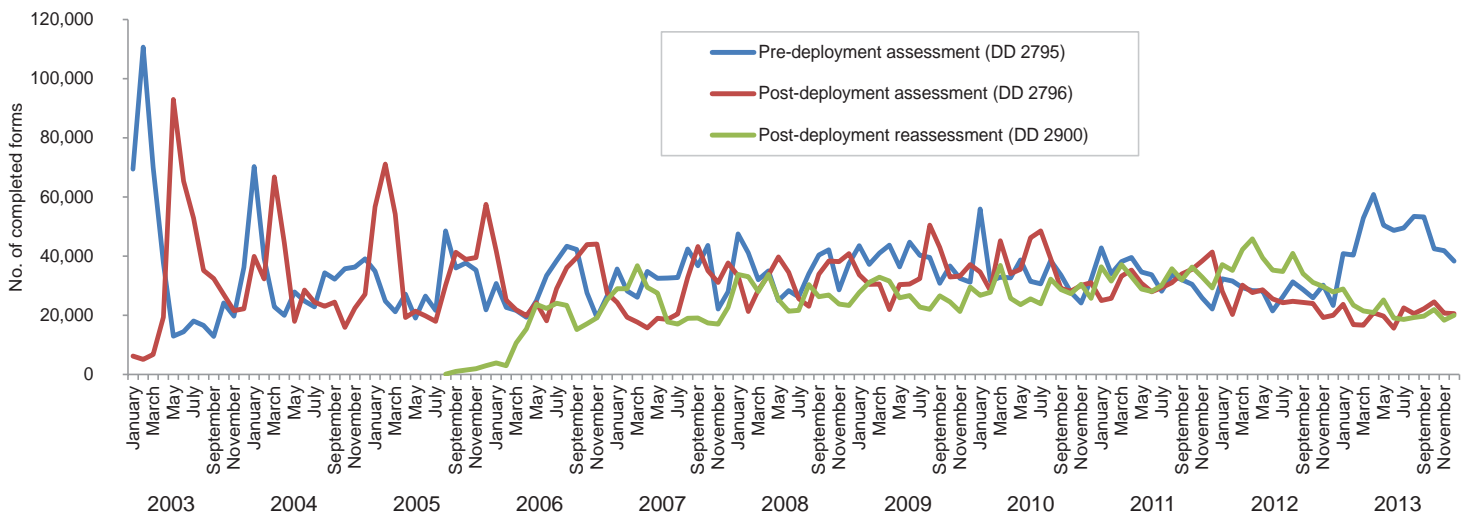
**Table 1.** Deployment-related health assessment forms, by month, U.S. Armed Forces, January 2013-December 2013

	Pre-deployment assessment DD2795		Post-deployment assessment DD2796		Post-deployment reassessment DD2900	
	No.	%	No.	%	No.	%
Total	572,517	100	243,985	100	256,488	100
<b>2013</b>						
January	40,787	7.1	23,642	9.7	28,846	11.2
February	40,338	7.0	16,778	6.9	23,377	9.1
March	52,792	9.2	16,612	6.8	21,405	8.3
April	60,786	10.6	20,764	8.5	20,885	8.1
May	50,426	8.8	19,729	8.1	25,184	9.8
June	48,648	8.5	15,614	6.4	19,029	7.4
July	49,542	8.7	22,424	9.2	18,622	7.3
August	53,418	9.3	20,485	8.4	19,242	7.5
September	53,186	9.3	22,226	9.1	19,737	7.7
October	42,500	7.4	24,497	10.0	21,899	8.5
November	41,838	7.3	20,688	8.5	18,335	7.1
December	38,256	6.7	20,526	8.4	19,927	7.8

**Figure 2.** Proportion of deployment health assessment forms with self-assessed health status as “fair” or “poor,” U.S. Armed Forces, January 2013-December 2013



**Figure 1.** Total deployment health assessment and reassessment forms, by month, U.S. Armed Forces, January 2003-December 2013



Data Source: Defense Medical Surveillance System

**Table 2.** Percentage of service members who endorsed selected questions/received referrals on health assessment forms, U.S. Armed Forces, January 2013-December 2013

Active component	Army			Navy			Air Force			Marine Corps			All service members		
	Pre-deploy DD2795	Post-deploy DD2796	Reassessmt DD2900	Pre-deploy DD2795	Post-deploy DD2796	Reassessmt DD2900	Pre-deploy DD2795	Post-deploy DD2796	Reassessmt DD2900	Pre-deploy DD2795	Post-deploy DD2796	Reassessmt DD2900	Pre-deploy DD2795	Post-deploy DD2796	Reassessmt DD2900
	n=124,027 %	n=91,163 %	n=83,741 %	n=10,042 %	n=10,241 %	n=12,940 %	n=48,776 %	n=43,273 %	n=64,250 %	n=24,908 %	n=24,284 %	n=23,180 %	n=207,753 %	n=168,961 %	n=184,111 %
General health "fair" or "poor"	5.4	10.2	13.7	1.5	4.5	5.7	1.2	2.7	1.7	2.6	6.1	9.7	3.9	7.3	8.5
Health concerns, not wound or injury	7.2	22.0	19.6	3.1	10.9	9.1	2.9	8.2	5.5	3.7	10.0	9.5	5.6	16.1	12.7
Health worse now than before deployed	na	63.4	69.8	na	67.9	73.8	na	59.9	38.7	na	70.8	79.1	na	63.8	60.4
Exposure concerns	na	18.6	16.2	na	18.5	17.1	na	14.5	5.5	na	15.6	20.9	na	17.1	13.1
PTSD symptoms (2 or more)	na	10.4	13.2	na	5.0	7.8	na	2.5	3.1	na	5.0	10.8	na	7.3	9.0
Depression symptoms (any)	na	26.8	27.8	na	16.0	19.7	na	8.2	8.3	na	19.5	24.9	na	20.3	20.1
Referral indicated by provider (any)	10.2	32.4	23.0	10.3	30.6	21.7	4.7	20.7	9.8	5.1	36.4	23.4	8.3	29.8	18.3
Mental health referral indicated <sup>a</sup>	3.6	6.7	17.6	1.1	3.7	16.7	0.6	1.7	8.1	0.9	2.9	19.9	2.4	4.7	14.5
Medical visit following referral <sup>b</sup>	99.4	99.8	98.8	84.3	90.6	90.8	99.8	98.8	99.7	74.5	89.0	90.8	96.4	97.0	96.7

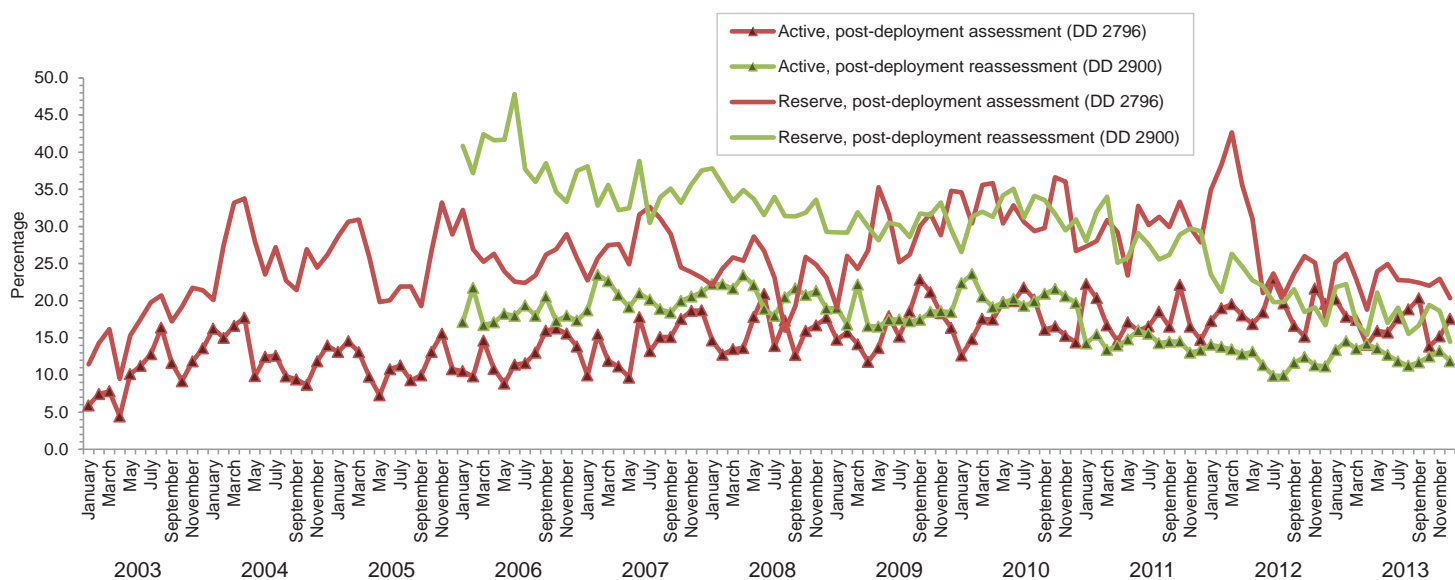
  

Reserve component	Army			Navy			Air Force			Marine Corps			All service members		
	Pre-deploy DD2795	Post-deploy DD2796	Reassessmt DD2900	Pre-deploy DD2795	Post-deploy DD2796	Reassessmt DD2900	Pre-deploy DD2795	Post-deploy DD2796	Reassessmt DD2900	Pre-deploy DD2795	Post-deploy DD2796	Reassessmt DD2900	Pre-deploy DD2795	Post-deploy DD2796	Reassessmt DD2900
	n=31,849 %	n=36,833 %	n=34,540 %	n=3,801 %	n=4,149 %	n=3,808 %	n=11,066 %	n=9,509 %	n=19,101 %	n=796 %	n=1,043 %	n=1,527 %	n=47,512 %	n=51,534 %	n=58,976 %
General health "fair" or "poor"	1.0	11.2	14.5	0.4	10.7	10.0	0.6	3.9	1.8	1.0	9.7	10.6	0.9	9.8	10.0
Health concerns, not wound or injury	4.9	23.5	24.7	1.2	36.7	13.6	1.1	9.1	3.4	1.9	24.4	16.0	3.7	21.9	16.8
Health worse now than before deployed	na	66.6	68.6	na	74.3	76.6	na	66.6	35.4	na	73.8	78.1	na	67.4	58.6
Exposure concerns	na	22.5	23.9	na	35.6	30.1	na	18.9	5.9	na	24.3	26.5	na	22.9	18.5
PTSD symptoms (2 or more)	na	9.2	15.2	na	8.7	13.0	na	2.0	2.8	na	7.4	17.0	na	7.8	11.1
Depression symptoms (any)	na	23.4	25.2	na	20.4	25.3	na	7.9	7.6	na	19.7	28.2	na	20.2	19.6
Referral indicated by provider (any)	5.3	37.0	47.9	5.0	53.7	39.6	2.1	19.7	7.7	4.6	55.7	43.4	4.5	35.5	34.2
Mental health referral indicated <sup>a</sup>	1.1	7.5	41.6	0.2	5.0	37.9	0.2	1.2	7.3	0.8	6.1	38.8	0.8	6.1	30.2
Medical visit following referral <sup>b</sup>	83.8	98.9	46.1	97.6	98.6	58.0	61.8	69.1	52.2	83.3	76.6	36.6	82.7	94.2	47.0

<sup>a</sup>Includes behavioral health, combat stress and substance abuse referrals.

<sup>b</sup>Record of inpatient or outpatient visit within 6 months after referral.

**Figure 3.** Proportion of service members who endorsed exposure concerns on post-deployment health assessments, U.S. Armed Forces, January 2003-December 2013



Data Source: Defense Medical Surveillance System