

Deployment Health Assessments

U.S. Armed Forces

September 2015

(Data through August 2015)

Armed Forces Health Surveillance Center

Update: Deployment Health Assessments, U.S. Armed Forces, September 2015

Since January 2003, peaks and troughs in the numbers of pre- and post-deployment health assessment forms transmitted to the Armed Forces Health Surveillance Center generally corresponded to times of departure and return of large numbers of deployers. Between April 2006 and August 2015, the number of post-deployment reassessment (PDHRA) forms per month ranged from 15,114 to 45,768 (**Table 1, Figure 1**).

During the past 12 months, the proportions of returned deployers who rated their health as “fair” or “poor” were 5.3–7.9% on post-deployment health assessment questionnaires and 7.8–10.3% on PDHRA questionnaires (**Figure 2**). The proportion of pre-deployment service members who rated their health as “fair” or “poor” ranged from 2.9–4.5% during the past 12 months.

In general, on post-deployment assessments and reassessments, deployers in reserve components were more likely than their active component counterparts to report health and exposure-related concerns (**Table 2, Figure 3**). Service members in the active component of the Marine Corps and reserve component of the Army were more likely to report exposure concerns three to six months after, compared to the time of return from deployment (**Table 2**). At the time of return from deployment, service members serving in the active and reserve component of the Army and reserve component of the Marine Corps were the most likely of all deployers to receive mental health referrals; three to six months after returning, reservists in all services were more likely than their active component counterparts to receive mental health referrals (**Table 2**).

Finally, during the past three years, reserve component members have been more likely than active component service members to report “exposure concerns” on post-deployment assessments (**Figure 3**).

Table 1. Deployment-related health assessment forms, by month, U.S. Armed Forces, September 2014–August 2015

	Pre-deployment assessment DD2795		Post-deployment assessment DD2796		Post-deployment reassessment DD2900	
	No.	%	No.	%	No.	%
Total	233,370	100	148,925	100	263,323	100
2014						
September	21,608	9.3	17,243	11.6	20,708	7.9
October	21,697	9.3	20,495	13.8	22,231	8.4
November	15,062	6.5	12,982	8.7	20,168	7.7
December	20,823	8.9	12,318	8.3	22,044	8.4
2015						
January	22,882	9.8	10,993	7.4	24,165	9.2
February	19,103	8.2	8,173	5.5	24,757	9.4
March	17,887	7.7	15,489	10.4	27,801	10.6
April	20,777	8.9	10,343	6.9	22,498	8.5
May	19,116	8.2	7,347	4.9	19,954	7.6
June	18,017	7.7	10,752	7.2	20,030	7.6
July	17,721	7.6	13,121	8.8	19,293	7.3
August	18,677	8.0	9,669	6.5	19,674	7.5

Table Summary: This table shows, for the 12-month period September 2014 through August 2015, the monthly counts and the whole year's counts of health assessment forms completed by service members. The counts are shown separately for the pre- and post-deployment assessments and for the post-deployment reassessments. The monthly counts for each assessment are trending downward.

Figure 2. Proportion of deployment health assessment forms with self-assessed health status as “fair” or “poor,” U.S. Armed Forces, September 2014–August 2015

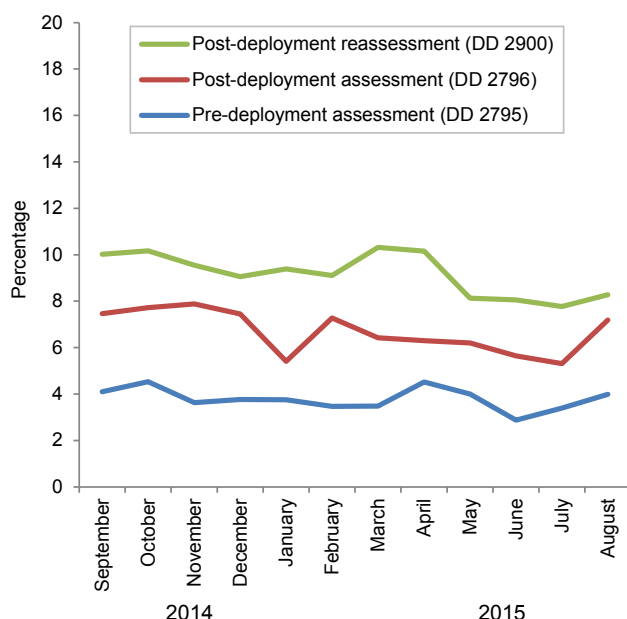


Figure 1. Total deployment health assessment and reassessment forms, by month, U.S. Armed Forces, January 2003–August 2015

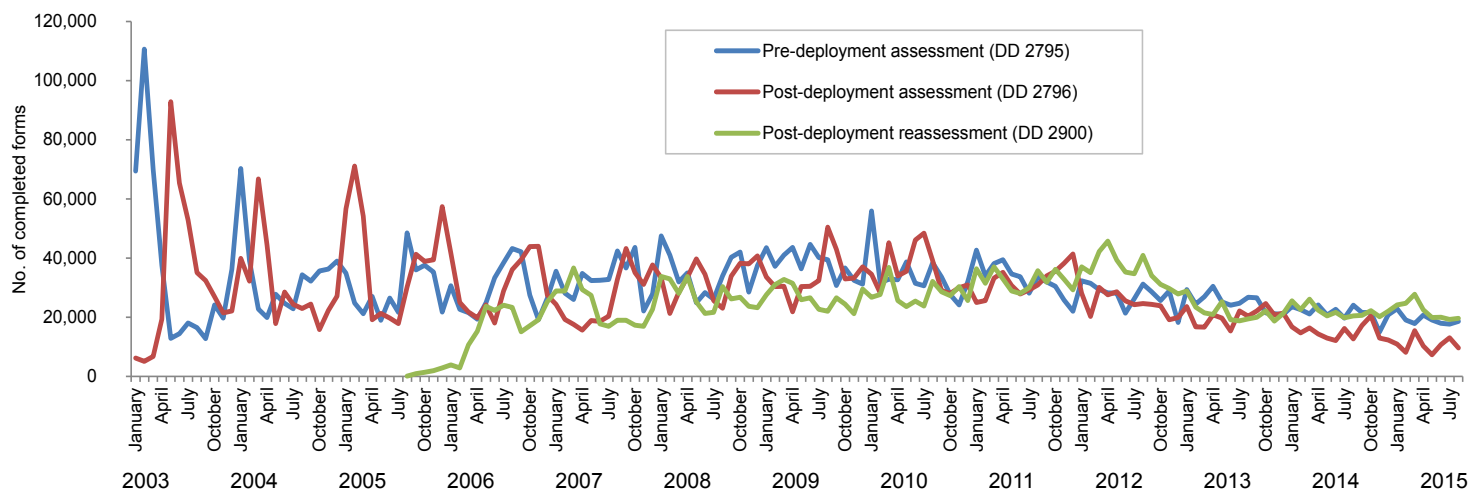


Table 2. Percentage of service members who endorsed selected questions/received referrals on health assessment forms, U.S. Armed Forces, September 2014–August 2015

	Army			Navy			Air Force			Marine Corps			All service members		
	Pre-deploy DD2795	Post-deploy DD2796	Reassessmt DD2900	Pre-deploy DD2795	Post-deploy DD2796	Reassessmt DD2900	Pre-deploy DD2795	Post-deploy DD2796	Reassessmt DD2900	Pre-deploy DD2795	Post-deploy DD2796	Reassessmt DD2900	Pre-deploy DD2795	Post-deploy DD2796	Reassessmt DD2900
Active component	n=106,025	n=55,212	n=104,405	n=6,931	n=6,153	n=8,301	n=40,786	n=35,660	n=69,999	n=18,325	n=13,957	n=16,817	n=172,067	n=110,982	n=199,522
	%	%	%	%	%	%	%	%	%	%	%	%	%	%	%
General health "fair" or "poor"	5.6	8.7	6.8	1.7	4.5	3.6	1.2	2.6	1.3	2.8	5.9	7.6	4.1	6.1	4.8
Health concerns, not wound or injury	7.3	19.3	9.3	3.3	10.2	7.6	2.8	7.8	7.6	3.6	9.3	8.8	5.7	13.9	8.6
Health worse now than before deployed	na	72.5	43.4	na	69.9	53.0	na	59.8	27.8	na	71.1	70.3	na	68.1	40.6
Exposure concerns	na	13.4	8.2	na	15.7	11.7	na	11.3	3.3	na	10.6	19.5	na	12.5	7.6
PTSD symptoms (2 or more)	na	6.6	5.4	na	3.3	7.9	na	2.1	3.2	na	3.6	8.4	na	4.6	5.0
Depression symptoms (any)	na	21.3	13.2	na	14.8	18.0	na	8.1	9.2	na	15.8	20.9	na	16.0	12.6
Referral indicated by provider (any)	8.2	23.2	17.7	5.2	27.4	14.3	5.3	13.0	8.8	5.8	23.4	16.3	7.1	20.2	14.3
Mental health referral indicated ^a	2.6	4.4	14.6	0.6	3.0	11.6	0.8	1.5	7.1	0.8	2.5	13.5	1.9	3.1	11.8
Medical visit following referral ^b	99.6	99.6	98.2	79.9	90.8	89.7	99.8	99.6	99.8	92.0	89.6	90.1	98.3	97.8	97.3
	Army			Navy			Air Force			Marine Corps			All service members		
	Pre-deploy DD2795	Post-deploy DD2796	Reassessmt DD2900	Pre-deploy DD2795	Post-deploy DD2796	Reassessmt DD2900	Pre-deploy DD2795	Post-deploy DD2796	Reassessmt DD2900	Pre-deploy DD2795	Post-deploy DD2796	Reassessmt DD2900	Pre-deploy DD2795	Post-deploy DD2796	Reassessmt DD2900
Reserve component	n=18,423	n=18,931	n=23,444	n=2,241	n=2,349	n=4,025	n=10,710	n=9,921	n=21,474	n=364	n=285	n=1,185	n=31,738	n=31,486	n=50,128
	%	%	%	%	%	%	%	%	%	%	%	%	%	%	%
General health "fair" or "poor"	1.0	11.1	14.2	0.2	9.6	5.3	1.0	4.2	1.4	0.8	8.1	6.2	1.0	8.8	7.8
Health concerns, not wound or injury	2.8	23.8	20.4	1.2	39.7	10.0	1.5	9.7	3.5	1.6	22.5	7.9	2.2	20.5	12.0
Health worse now than before deployed	na	71.5	79.1	na	75.9	46.5	na	66.9	23.9	na	75.8	53.4	na	70.4	52.2
Exposure concerns	na	19.1	22.4	na	40.2	19.6	na	16.3	3.5	na	26.3	14.3	na	19.9	13.9
PTSD symptoms (2 or more)	na	8.0	14.6	na	7.3	12.1	na	1.9	2.5	na	9.1	14.3	na	6.0	9.2
Depression symptoms (any)	na	21.9	25.3	na	18.3	23.2	na	8.0	7.2	na	18.2	23.0	na	17.2	17.3
Referral indicated by provider (any)	4.6	33.0	49.0	3.9	31.6	28.3	2.7	16.6	8.6	3.3	48.4	29.7	3.9	27.9	29.6
Mental health referral indicated ^a	1.0	5.5	48.3	0.2	1.9	27.8	0.4	1.3	8.3	0.5	7.4	28.4	0.7	3.9	29.1
Medical visit following referral ^b	88.9	99.3	49.0	100.0	97.7	57.0	58.7	74.9	59.1	77.8	73.3	40.6	83.0	94.4	50.4

^aIncludes behavioral health, combat stress and substance abuse referrals.
^bRecord of inpatient or outpatient visit within 6 months after referral.

Table Summary: This large table depicts, for the most recent 12-month period as a whole, the percentages of service members whose responses endorsed health concerns, problems, or symptoms, or who received referrals for follow-up health care. The table distinguishes members of the active and reserve components, members of the four Services, and responses on each of the three different types of questionnaire.

Figure 3. Proportion of service members who endorsed exposure concerns on post-deployment health assessments, U.S. Armed Forces, January 2003–August 2015

