

Deployment Health Assessments

U.S. Armed Forces

February 2016

(Data through January 2016)

Armed Forces Health Surveillance Branch

Update: Deployment Health Assessments, U.S. Armed Forces, February 2016

Since January 2003, peaks and troughs in the monthly numbers of pre- and post-deployment health assessment forms transmitted to the Armed Forces Health Surveillance Branch generally corresponded to times of departure and return of large numbers of service members who deployed. Between April 2006 and January 2016, the number of post-deployment reassessment (PDHRA) forms per month ranged from 15,114 to 45,768 (Figure 1). For the most recent 12 months (February 2015–January 2016), the average monthly numbers of pre- and post-deployment assessments (18,223 and 11,099, respectively) were the lowest of any 12-month period since January 2004 (Table 1).

During the past 12 months, the proportions of returned deployers who rated their health as either “fair” or “poor” were 5.3%–7.9% on post-deployment health assessment questionnaires and 7.2%–10.3% on PDHRA questionnaires (Figure 2). The proportions of service members who rated their health as either “fair” or “poor” on the pre-deployment questionnaires ranged from 2.9% to 4.5% during the past 12 months.

In general, the proportions of reserve component members reporting “exposure concerns” and “health concerns” on post-deployment assessments and reassessments have been consistently greater than among active component members (Table 2, Figure 3). Service members in the active component of the Marine Corps and reserve component of the Army were more likely to report exposure concerns 3–6 months after, compared to the time of, return from deployment (Table 2).

At the time of return from deployment, service members in the active and reserve component of the Army, active component of the Navy, and reserve component of the Marine Corps were the most likely of all deployers to receive mental health referrals; 3–6 months after returning, at the time of the PDHRA, reservists in all services were more likely than their active component counterparts to receive mental health referrals (Table 2).

Table 1. Numbers of deployment-related health assessment forms, by month, U.S. Armed Forces, February 2015–January 2016

	Pre-deployment assessment DD 2795		Post-deployment assessment DD 2796		Post-deployment reassessment DD 2900	
	No.	%	No.	%	No.	%
Total	218,672	100	133,188	100	250,504	100
2015						
February	19,129	8.7	8,182	6.1	24,804	9.9
March	17,983	8.2	15,528	11.7	27,874	11.1
April	20,804	9.5	10,375	7.8	22,595	9.0
May	18,911	8.6	7,364	5.5	20,075	8.0
June	17,837	8.2	10,381	7.8	20,230	8.1
July	17,860	8.2	13,061	9.8	19,740	7.9
August	19,729	9.0	10,318	7.7	21,353	8.5
September	18,469	8.4	14,108	10.6	17,069	6.8
October	19,515	8.9	13,050	9.8	18,272	7.3
November	12,669	5.8	10,276	7.7	19,013	7.6
December	16,273	7.4	11,718	8.8	19,159	7.6
2016						
January	19,493	8.9	8,827	6.6	20,320	8.1

Source: Defense Medical Surveillance System (DMSS) as of 08FEB2016
Prepared by Armed Forces Health Surveillance Branch (AFHSB)

Figure 2. Proportion of deployment health assessment forms with self-assessed health status as “fair” or “poor,” by month, U.S. Armed Forces, February 2015–January 2016

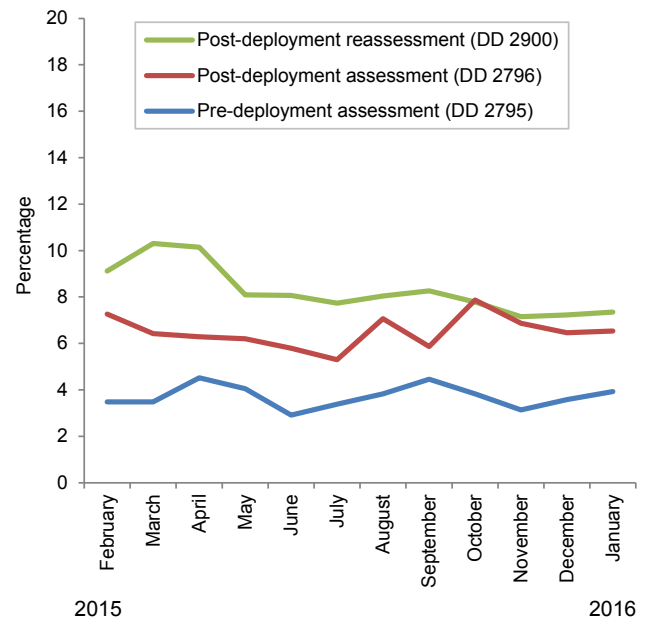


Figure 1. Numbers of deployment health assessment and reassessment forms, by month, U.S. Armed Forces, January 2003–January 2016

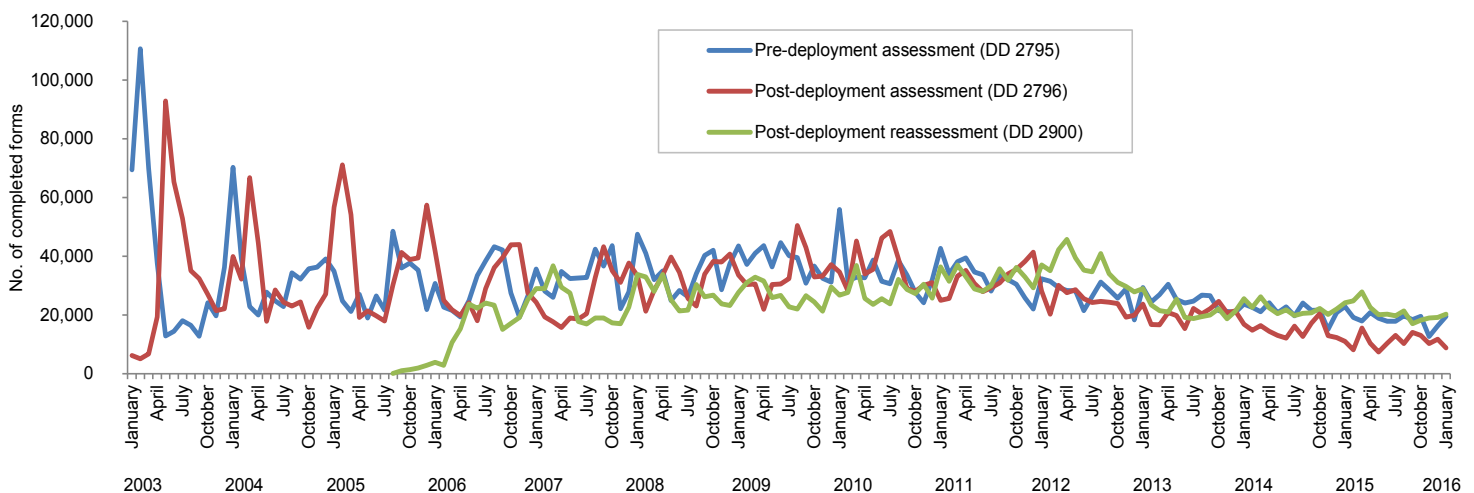


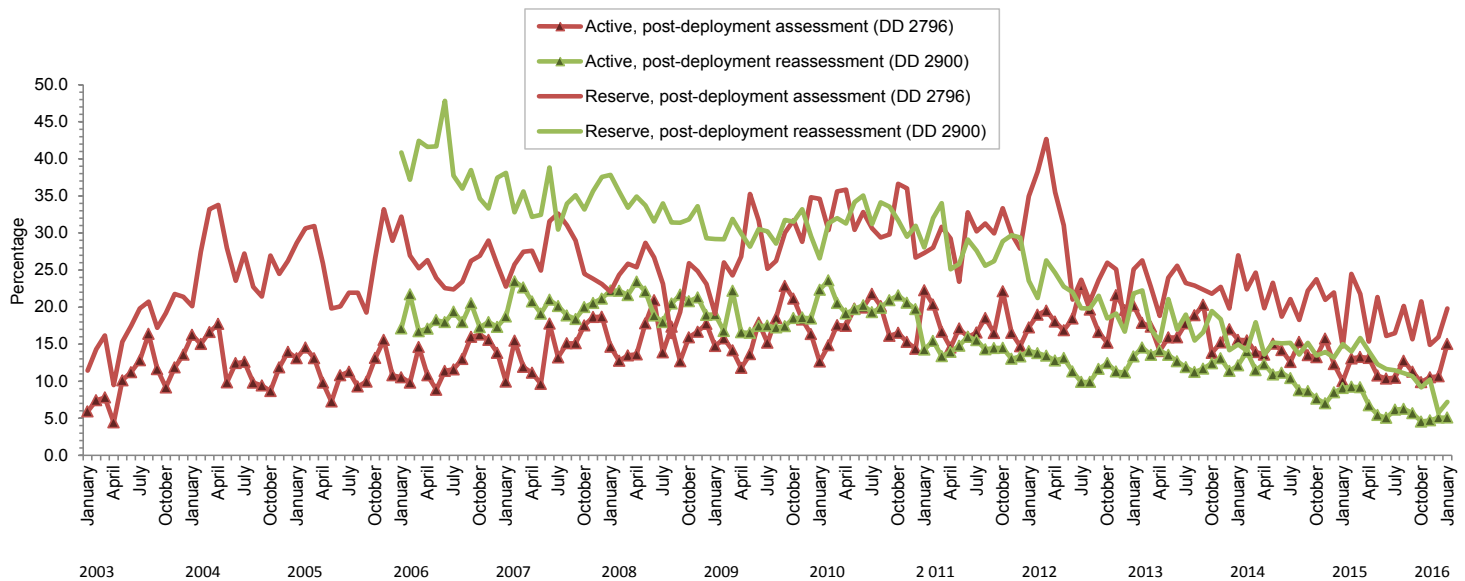
Table 2. Percentage of service members who endorsed selected questions or received referrals on health assessment forms, U.S. Armed Forces, February 2015–January 2016

	Army			Navy			Air Force			Marine Corps			All service members		
	Pre-deploy DD2795	Post-deploy DD2796	Reassessmt DD2900	Pre-deploy DD2795	Post-deploy DD2796	Reassessmt DD2900	Pre-deploy DD2795	Post-deploy DD2796	Reassessmt DD2900	Pre-deploy DD2795	Post-deploy DD2796	Reassessmt DD2900	Pre-deploy DD2795	Post-deploy DD2796	Reassessmt DD2900
Active component	n= 94,846	n= 44,597	n= 93,450	n= 6,766	n= 5,322	n= 8,731	n= 37,260	n= 35,435	n= 70,190	n= 18,361	n= 12,785	n= 15,637	n= 157,233	n= 98,139	n= 188,008
	%	%	%	%	%	%	%	%	%	%	%	%	%	%	%
General health "fair" or "poor"	5.8	8.5	5.6	1.8	4.4	3.4	1.2	2.6	1.2	2.9	6.1	7.4	4.2	5.8	4.0
Health concerns, not wound or injury	7.3	19.5	7.8	3.1	11.3	7.3	3.0	7.4	7.6	3.4	9.1	8.3	5.7	13.3	7.7
Health worse now than before deployed	na	71.8	37.1	na	70.1	52.8	na	60.0	27.6	na	71.5	68.8	na	67.4	36.9
Exposure concerns	na	12.3	6.6	na	15.7	11.0	na	11.1	3.0	na	10.4	17.1	na	11.8	6.3
PTSD symptoms (2 or more)	na	6.0	4.4	na	3.4	7.6	na	2.1	3.2	na	2.9	7.9	na	4.1	4.4
Depression symptoms (any)	na	21.4	11.0	na	14.5	17.5	na	8.2	9.4	na	15.1	20.5	na	15.4	11.5
Referral indicated by provider (any)	7.5	19.2	17.1	5.3	32.3	13.2	5.8	12.5	8.8	5.8	19.7	14.7	6.8	17.6	13.6
Mental health referral indicated ^a	2.2	3.3	14.0	0.7	4.5	10.7	0.9	1.5	7.2	0.7	2.0	12.7	1.7	2.5	11.2
Medical visit following referral ^b	98.7	98.6	97.1	78.4	81.0	87.6	99.8	96.6	99.6	89.6	77.4	90.5	97.3	93.2	96.6
	Army			Navy			Air Force			Marine Corps			All service members		
	Pre-deploy DD2795	Post-deploy DD2796	Reassessmt DD2900	Pre-deploy DD2795	Post-deploy DD2796	Reassessmt DD2900	Pre-deploy DD2795	Post-deploy DD2796	Reassessmt DD2900	Pre-deploy DD2795	Post-deploy DD2796	Reassessmt DD2900	Pre-deploy DD2795	Post-deploy DD2796	Reassessmt DD2900
Reserve component	n= 21,287	n= 15,532	n= 17,528	n= 2,351	n= 1,816	n= 3,717	n= 12,649	n= 9,977	n= 21,192	n= 423	n= 212	n= 6,058	n= 36,710	n= 27,537	n= 48,495
	%	%	%	%	%	%	%	%	%	%	%	%	%	%	%
General health "fair" or "poor"	1.2	10.6	13.4	0.2	9.0	5.4	1.0	4.3	1.6	0.7	8.5	1.1	1.1	8.2	6.1
Health concerns, not wound or injury	2.8	22.8	19.6	1.0	39.5	8.7	1.6	9.7	3.7	1.9	27.8	3.0	2.2	19.2	9.7
Health worse now than before deployed	na	69.5	78.0	na	75.8	43.8	na	67.1	25.5	na	76.4	8.0	na	69.1	43.7
Exposure concerns	na	16.9	22.2	na	36.5	18.5	na	16.3	3.7	na	24.1	2.1	na	18.0	11.3
PTSD symptoms (2 or more)	na	7.4	14.2	na	6.1	11.8	na	1.6	2.6	na	10.4	8.0	na	5.3	8.2
Depression symptoms (any)	na	20.7	23.9	na	17.3	22.5	na	7.8	7.4	na	16.5	20.0	na	15.8	16.1
Referral indicated by provider (any)	4.3	29.3	46.1	3.8	37.3	25.9	3.1	15.5	9.1	3.5	54.7	15.1	3.8	25.0	24.5
Mental health referral indicated ^a	0.8	4.5	45.6	0.3	2.9	25.3	0.4	1.1	8.8	0.9	5.2	13.6	0.6	3.1	24.0
Medical visit following referral ^b	90.0	99.5	44.7	92.9	98.2	51.7	63.5	68.3	55.3	100.0	66.7	47.6	82.9	91.9	46.7

^aIncludes behavioral health, combat stress and substance abuse referrals.

^bRecord of inpatient or outpatient visit within 6 months after referral.

Figure 3. Proportion of service members who endorsed exposure concerns on post-deployment health assessments or reassessments, by component, U.S. Armed Forces, January 2003–January 2016



Data Source: Defense Medical Surveillance System