



# DEPARTMENT OF DEFENSE (AFHSB) Seasonal Influenza Surveillance Summary

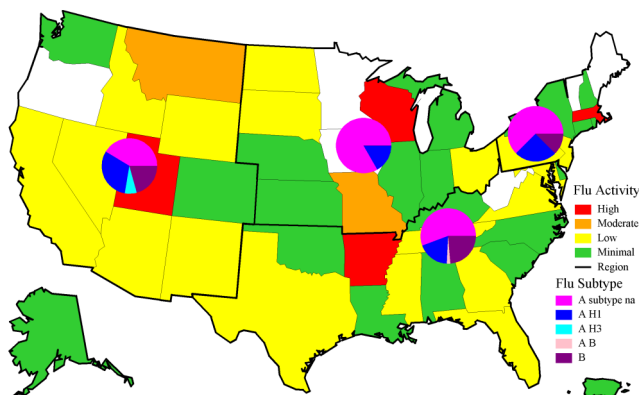


## Northern Command -- Week 13 (27 Mar 2016—02 Apr 2016)

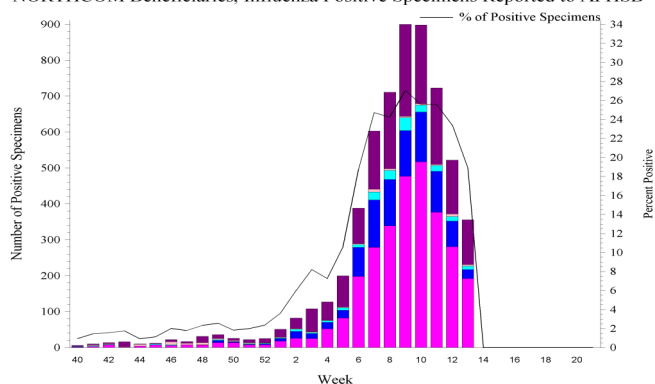
In NORTHCOM during week 13<sup>1,2</sup>

- ◆ Influenza activity decreased in some states and ranged from minimal to low in most states.
- ◆ The percentage of outpatient visits due to ILI decreased and remained similar to previous seasons.
- ◆ The percentage of positive lab tests decreased to 11.6% for service members and 18.9% for beneficiaries.
- ◆ There was 1 beneficiary influenza hospitalization (RME) reported for week 13.

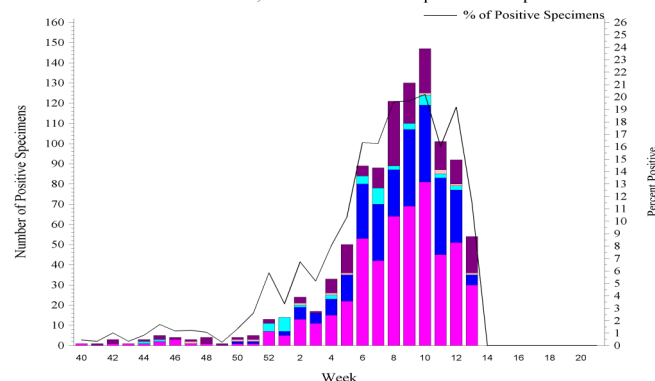
NORTHCOM Service Members, Influenza Activity and Virus Subtype, During the Last 2 Weeks



NORTHCOM Beneficiaries, Influenza Positive Specimens Reported to AFHSB



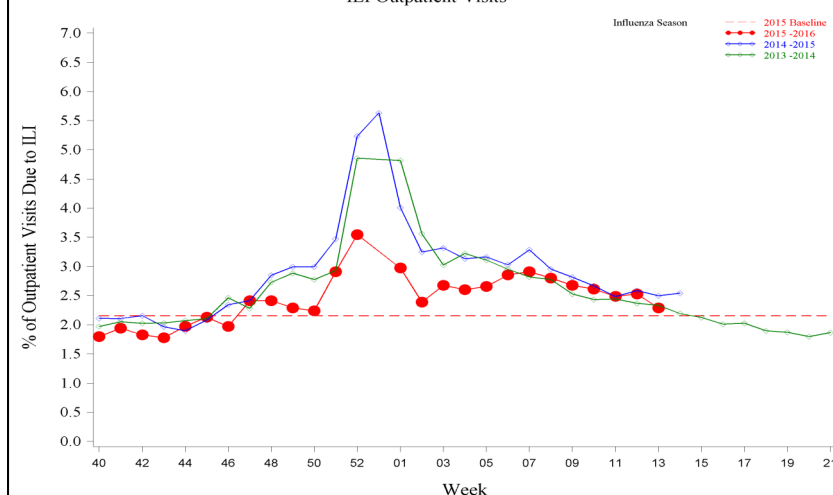
NORTHCOM Service Members, Influenza Positive Specimens Reported to AFHSB



### 2015 – 2016 NORTHCOM Season Totals<sup>1,2</sup>

	A/H1N1	A/H3N2	A/Untyped	Flu B	AB	Overall % Positive
Service Members	259	42	521	175	11	9.67
Dependents	912	186	2954	1782	84	13.91

NORTHCOM Service Members, 2015-2016 and Previous 2 Influenza Seasons ILI Outpatient Visits



- ◆ NHRC laboratory-confirmed influenza cases, US Military Basic Trainees: As of Week 13

	Week 13 <sup>3</sup>				2015 – 2016 Recruit Season Totals <sup>3</sup>				No. Tested
	A/H1N1	A/H3N2	A/unsubtyped	Flu B	A/H1N1	A/H3N2	A/unsubtyped	Flu B	
Ft Benning							1	2	85
Ft Jackson							2		87
Ft Leonard Wood						1	7	3	111
NRTC Great Lakes							2		28
Lackland AFB									24
MCRD Parris Island							6		79
MCRD San Diego		4				16	1	1	198
CGTC Cape May						3	3	9	50
<b>Total</b>	<b>0</b>	<b>4</b>	<b>0</b>	<b>0</b>	<b>0</b>	<b>20</b>	<b>22</b>	<b>15</b>	<b>662</b>

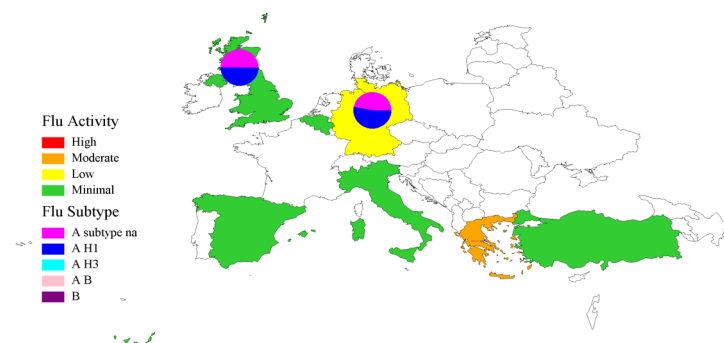
<sup>1</sup>AFHSB, <sup>2</sup>USAFSAM, <sup>3</sup>NHRC, <sup>4</sup>LRMC, <sup>5</sup>PHCR-E, <sup>6</sup>AFRIMS, <sup>7</sup>NMRC-A, <sup>8</sup>USAMRU-K, <sup>9</sup>NAMRU-3, <sup>10</sup>NAMRU-6

**European Command -- Week 13**

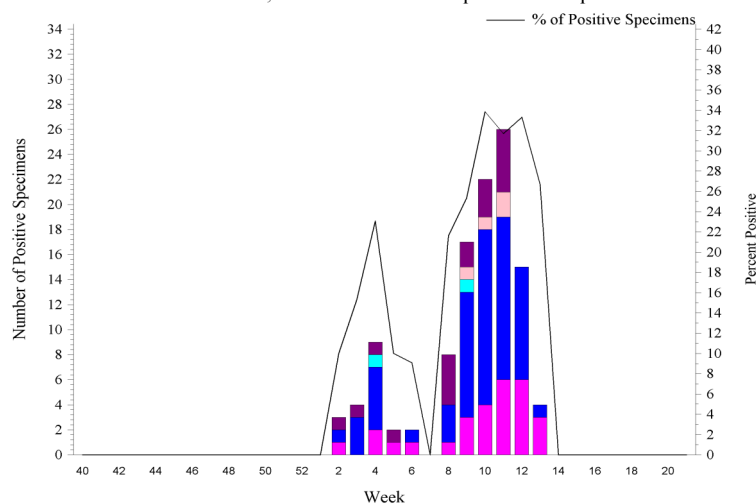
In EUROM during week 13<sup>4,5</sup>

- ◆ EUROM influenza activity remained similar to last week and was minimal with the exception of Germany (low activity) and Greece (moderate activity).
- ◆ The percentage of outpatient visits due to ILI continued to decrease and was similar to past seasons.
- ◆ The percentage of positive lab tests for week 13 was 26.7% for service members and 20.0% for beneficiaries.

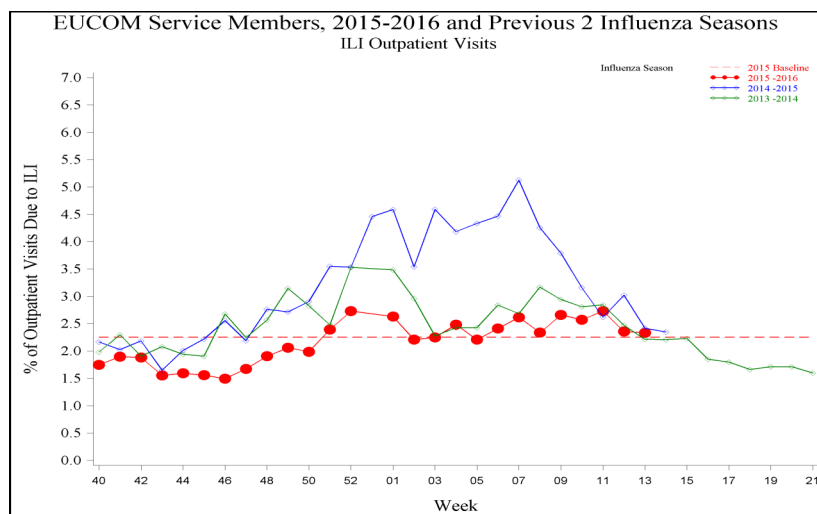
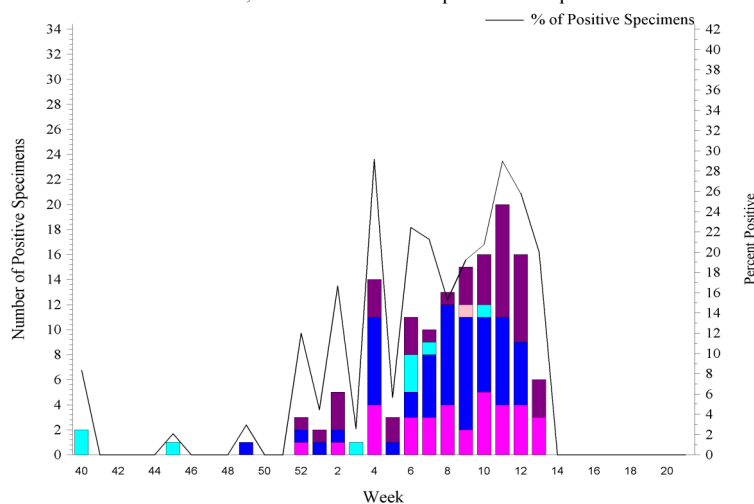
EUROM Service Members, Influenza Activity and Virus Subtype, During the Last 2 Weeks



EUROM Service Members, Influenza Positive Specimens Reported to AFHSB



EUROM Beneficiaries, Influenza Positive Specimens Reported to AFHSB



2015-2016 EUROM Season Totals <sup>1,4,5</sup>						
	A/H1N1	A/H3N2	A/Untyped	Influenza B	AB	Overall % Positive
Service Members	60	2	28	18	4	16.87
Dependents	54	9	34	41	1	11.68

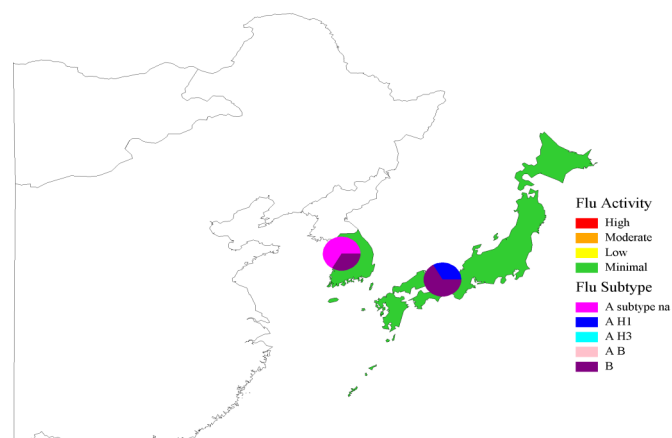
<sup>1</sup>AFHSB, <sup>2</sup>USAFSAM, <sup>3</sup>NHRC, <sup>4</sup>LRMC, <sup>5</sup>PHCR-E, <sup>6</sup>AFRIMS, <sup>7</sup>NMRC-A, <sup>8</sup>USAMRU-K, <sup>9</sup>NAMRU-3, <sup>10</sup>NAMRU-6

**Pacific Command -- Week 13**

In PACOM during week 13<sup>1,6,7</sup>

- ◆ Influenza activity decreased to minimal throughout PACOM.
- ◆ The percentage of outpatient visits due to ILI continued to decrease and remained below baseline.
- ◆ The percentage of positive lab tests increased to 35.3% for service members and decreased to 27.5% for beneficiaries.
- ◆ There were 3 beneficiary influenza hospitalizations (RME) reported for week 13.

PACOM Service Members, Influenza Activity and Virus Subtype, During the Last 2 Weeks  
South Korea and Japan

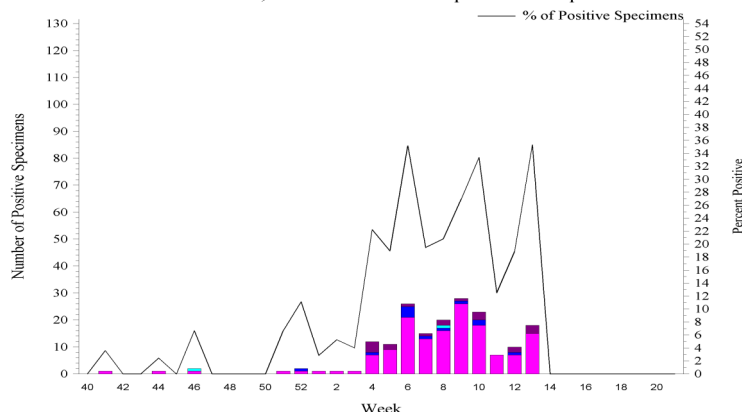


**PACOM: Guam and Hawaii Influenza Activity and HL7 Test Positive (MAP: SM+BN, 2 wks)**

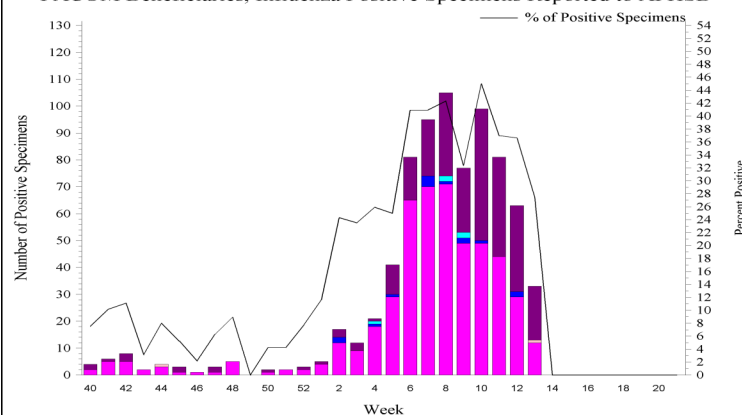
Area Name	Influenza Activity	HL7 Type				
		A(H1)	A(H3)	A Untyped	B	AB
<b>Guam</b>	Minimal	0	0	19	0	1
<b>Hawaii*</b>	Minimal	0	0	35	11	0

\*Hawaii HL7 Type counts may include samples received from Guam, but tested in Hawaii

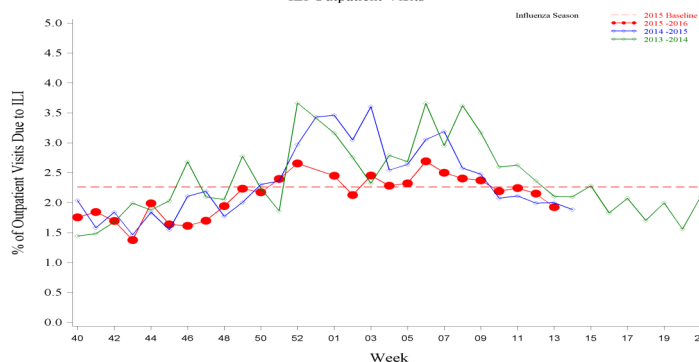
PACOM Service Members, Influenza Positive Specimens Reported to AFHSB



PACOM Beneficiaries, Influenza Positive Specimens Reported to AFHSB



PACOM Service Members, 2015-2016 and Previous 2 Influenza Seasons  
ILI Outpatient Visits



**2015-2016 PACOM Season Totals<sup>1,6,7</sup>**

	A/H1N1	A/H3N2	A/Untyped	Flu B	Flu AB	Overall % Positive
Service Members	12	2	147	19	0	16.26
Dependents	14	5	491	261	2	28.08

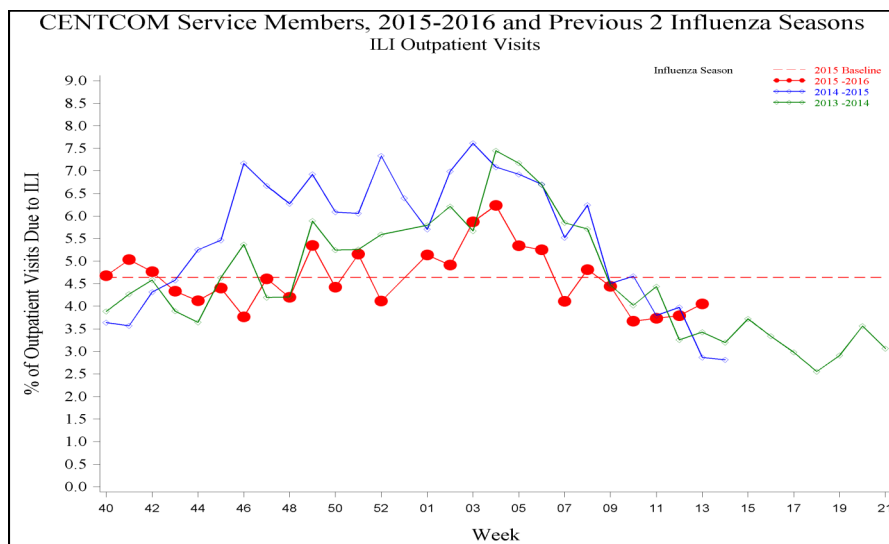
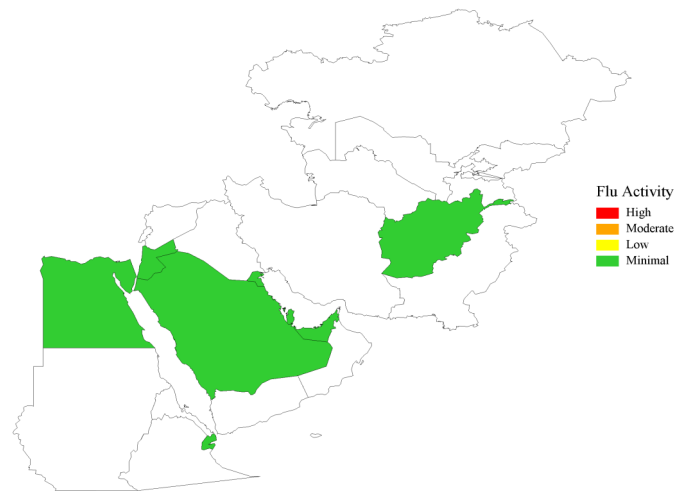
<sup>1</sup>AFHSB, <sup>2</sup>USAFSAM, <sup>3</sup>NHRC, <sup>4</sup>LRMC, <sup>5</sup>PHCR-E, <sup>6</sup>AFRIMS, <sup>7</sup>NMRC-A, <sup>8</sup>USAMRU-K, <sup>9</sup>NAMRU-3, <sup>10</sup>NAMRU-6

**Central and Africa Commands -- Week 13**

In CENTCOM and AFRICOM during week 13<sup>1,8,9</sup>

- ♦ Influenza activity remained minimal across CENTCOM and AFRICOM.
- ♦ The percentage of outpatient visits due to ILI increased during week 13, but remained below baseline.

CENTCOM, Influenza Activity, During the Last 2 Weeks

**Southern Command -- Week 13**

In SOUTHCOM during week 13<sup>10</sup>

- ♦ Influenza activity in Honduras was minimal based on DMSS data.

<sup>1</sup>AFHSB, <sup>2</sup>USAFSAM, <sup>3</sup>NHRC, <sup>4</sup>LRMC, <sup>5</sup>PHCR-E, <sup>6</sup>AFRIMS, <sup>7</sup>NMRC-A, <sup>8</sup>USAMRU-K, <sup>9</sup>NAMRU-3, <sup>10</sup>NAMRU-6

## Description:

Maps, figures and tables are stratified by Combatant Commands (CCMD). The map provides a measure of influenza activity by state or country within each CCMD for the past two weeks for service members. Influenza activity is defined by the percentage of outpatient visits associated with an Influenza-like Illness (ILI) for each week compared to baseline levels of influenza activity. Additionally, a pie graph by US region or country is generated to display the distribution of influenza types and subtype identified from positive laboratory tests for the past two weeks combined.

## Influenza activity: Percentage of Outpatient Visits Associated with ILI:

The percentage of all outpatient visits for ILI is calculated each week for all service members, regardless of component. These data are presented as a map of the past two weeks' activity and a figure to display the entire season's data compared to the two prior seasons and baseline. For the map, the activity level compares the mean reported percent of visits due to ILI for the past two weeks to the mean reported percent of visits due to ILI during baseline weeks. Baseline weeks are defined as non-influenza weeks (weeks 22-39) over the past 3 years.

There are four activity levels reported on each map. The activity level corresponds to the number of standard deviations (SD) below, at or above the mean for the current week compared to the mean of the baseline weeks. Activity levels are classified as minimal, low, moderate, and high. Minimal activity corresponds to an influenza percentage that is less than 2 SD above the mean. Low activity corresponds to an influenza percentage that is equal to or greater than 2 SD above the mean, but less than 4 SD above the mean. Moderate activity corresponds to an influenza percentage that is equal to or greater than 4 SD above the mean, but less than 6 SD above the mean. High activity corresponds to an influenza percentage that is equal to or greater than 6 SD above the mean.

## Influenza Positive Specimens:

Lab results from PCR, viral culture, and rapid influenza assays are reported. Although the inclusion of rapid tests may underestimate the weekly and cumulative percent positive estimates due to false negatives, visibility of the positive rapid results provides valuable information for this surveillance report. Influenza types/subtypes are categorized as influenza A not subtyped (A subtype na), influenza A/H1 (A H1), influenza A/H3 (A H3), influenza A and B co-infection (A B), and influenza B (B).

Map: Each US region or country with available data contains a pie chart that displays the distribution of influenza types and subtypes for that area for the past two weeks combined. Two weeks of data are combined instead of using just the current week's data due to delays in reporting of laboratory results.

Figure and Table: Each week, using the total number of influenza laboratory tests performed and the positive test results, the proportions positive for each serotype of influenza are calculated for service members and dependents separately.

## Data Sources and Case Definitions:

Medical encounter and demographic data from the Armed Forces Health Surveillance Branch's (AFHSB) Defense Medical Surveillance System (DMSS) are used to generate this report. In addition, health-level 7 (HL-7) format laboratory data is provided by the Navy and Marine Corps Public Health Center (NMCPHC) EpiData Center Division. For the past seasons and baseline calculations, ICD-9 codes from outpatient encounters are used to identify influenza activity. The outcome of influenza activity based on ICD-9 codes is defined using the combined codes for ILI (79.99, 382.9, 460, 461.9, 465.8, 465.9, 466.0, 486, 487.0, 487.1, 487.8, 488, 490, 780.6, or 786.2). For the current season, ICD-10 codes from outpatient encounters are used to identify influenza activity. The outcome of influenza activity based on ICD-10 codes is defined using the combined codes for ILI (B97.89, H66.9, H66.90, H66.91, H66.92, H66.93, J00, J01.9, J01.90, J06.9, J09, J09.X, J09.X1, J09.X2, J09.X3, J09.X9, J10, J10.0, J10.00, J10.01, J10.08, J10.1, J10.2, J10.8, J10.81, J10.82, J10.83, J10.89, J11, J11.0, J11.00, J11.08, J11.1, J11.2, J11.8, J11.81, J11.82, J11.83, J11.89, J12.89, J12.9, J18, J18.1, J18.8, J18.9, J20.9, J40, R05, R50.9). An individual can only be counted as a case once per week.

## NORTHCOM Regions:

The regions on the NORTHCOM map (bold, black outlines) are defined using the four US Census regions, with the exception of Hawaii and Guam which are a part of PACOM. *Northeast:* Connecticut, Maine, Massachusetts, New Hampshire, Rhode Island, Vermont, New Jersey, New York, Pennsylvania, Puerto Rico, and the U.S. Virgin Islands. *South:* Delaware, the District of Columbia, Maryland, Virginia, West Virginia, Alabama, Florida, Georgia, Kentucky, Mississippi, North Carolina, South Carolina, Tennessee, Arkansas, Louisiana, Texas, and Oklahoma. *Midwest:* Illinois, Indiana, Michigan, Minnesota, Ohio, Wisconsin, Iowa, Kansas, Missouri, Nebraska, North Dakota, and South Dakota. *West:* New Mexico, Colorado, Montana, Utah, Wyoming, Arizona, California, Nevada, Alaska, Idaho, Oregon, and Washington.

(All data are preliminary and subject to change as updated data is received)

<sup>1</sup>AFHSB, <sup>2</sup>USAFSAM, <sup>3</sup>NHRC, <sup>4</sup>LRMC, <sup>5</sup>PHCR-E, <sup>6</sup>AFRIMS, <sup>7</sup>NMRC-A, <sup>8</sup>USAMRU-K, <sup>9</sup>NAMRU-3, <sup>10</sup>NAMRU-6

For inquiries or comments please contact [dha.ncr.health-surv.list.afhs-ib-alert-response@mail.mil](mailto:dha.ncr.health-surv.list.afhs-ib-alert-response@mail.mil)