

# Deployment Health Assessments

U.S. Armed Forces

August 2016

(Data through July 2016)

Armed Forces Health Surveillance Branch

# Update: Deployment Health Assessments, U.S. Armed Forces, August 2016

Since January 2003, pronounced fluctuations in the monthly numbers of pre- and post-deployment health assessment forms transmitted to the Armed Forces Health Surveillance Branch generally have corresponded to times of departure and return of large numbers of service members who deployed. Between April 2006 and July 2016, the number of post-deployment health reassessment (PDHRA) forms per month ranged from 7,123 to 36,863 (Figure 1). The rolling one-year averages for monthly numbers of pre- and post-deployment assessments for most recent 12-month period (August 2015–July 2016) were the 12 lowest averages since January 2004 (data not shown). For the purposes of this report about service members' responses to the assessment questions, it is important to note that the denominator is the total number of service members who completed deployment-related assessments, not the total number of service members eligible for the assessments.

During the past 12 months, the percentages of total returned deployers who rated their health as either "fair" or "poor" ranged from 5.9%–7.8% on post-deployment health assessment questionnaires and 6.5%–8.9% on PDHRA questionnaires (Figure 2). The percentages of total service members who rated their health as either "fair" or "poor" on the pre-deployment questionnaires during this period varied between 3.1% and 4.4%.

In general, the percentages of reserve component members reporting "health concerns" and "exposure concerns" on post-deployment assessments and reassessments have been higher than among active component members (Table 2, Figure 3). Compared to their respective counterparts, service members in the active component of the Marine Corps and reserve component of the Army were more likely to report exposure concerns 3–6 months after deployment than at the time of return from deployment (Table 2).

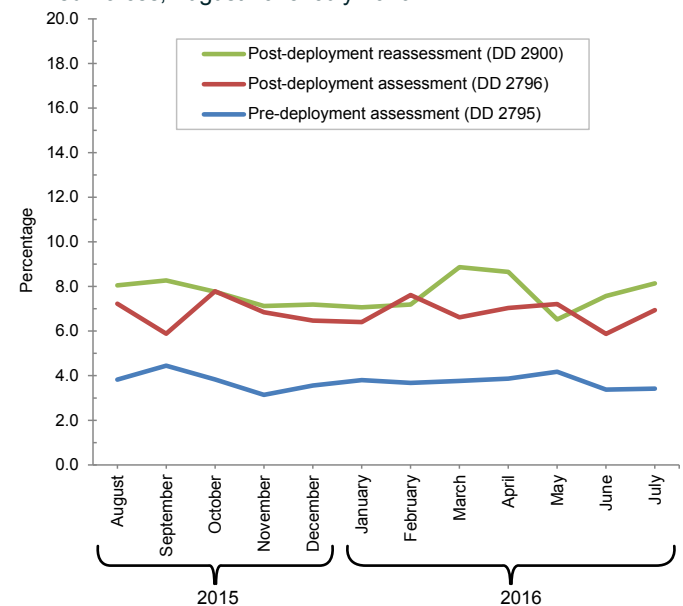
At the time of return from deployment, 16.0% of active component and 15.0% of reserve component service members reported any depression symptoms. Service members in the active and reserve components were more than five and twelve times more likely, respectively, to receive a mental health referral at the time of the PDHRA compared to the time of return from deployment. Moreover, at the time of the PDHRA (3-6 months after return), reservists were more than twice as likely to receive a mental health referral as members of the active component (Table 2).

**Table 1.** Number of deployment-related health assessment forms, by month, U.S. Armed Forces, August 2015–July 2016

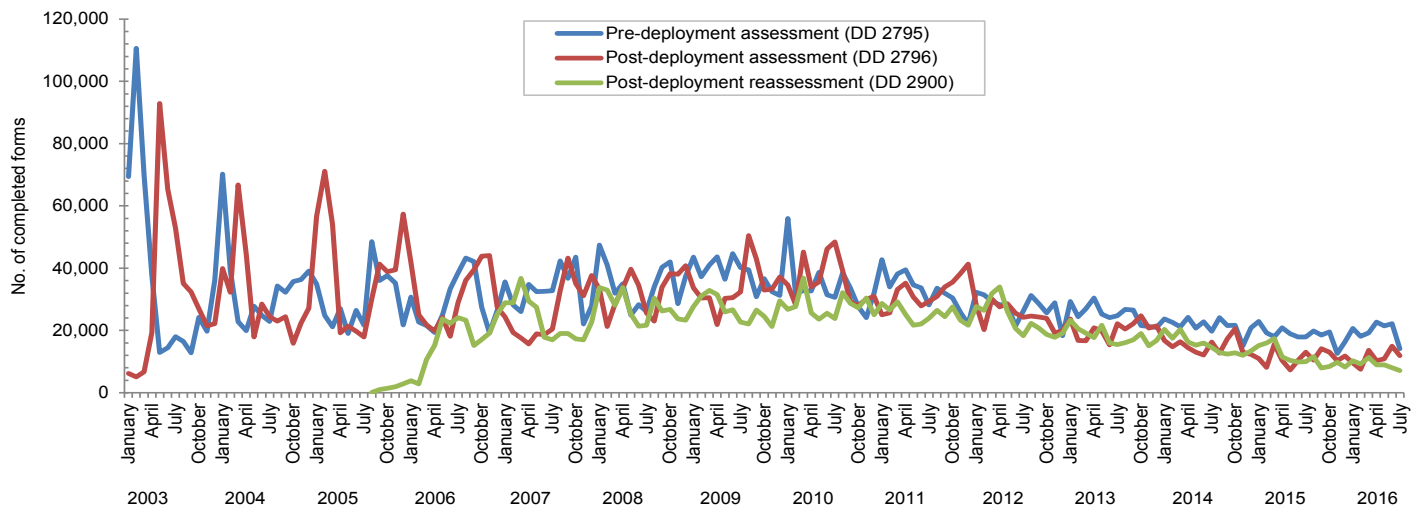
	Pre-deployment assessment DD 2795		Post-deployment assessment DD 2796		Post-deployment reassessment DD 2900	
	No.	%	No.	%	No.	%
Total	225,508	100.0	138,610	100.0	109,836	100.0
Average	18,792	.	11,551	.	9,153	.
<b>2015</b>						
August	19,853	8.8	10,461	7.5	11,556	10.5
September	18,522	8.2	14,136	10.2	7,958	7.2
October	19,505	8.6	13,074	9.4	8,419	7.7
November	12,670	5.6	10,311	7.4	9,721	8.9
December	16,430	7.3	11,772	8.5	8,237	7.5
<b>2016</b>						
January	20,627	9.1	9,537	6.9	10,277	9.4
February	18,119	8.0	7,576	5.5	9,287	8.5
March	19,278	8.5	13,659	9.9	11,253	10.2
April	22,663	10.0	10,329	7.5	8,945	8.1
May	21,475	9.5	10,936	7.9	8,986	8.2
June	22,181	9.8	14,955	10.8	8,074	7.4
July	14,185	6.3	11,864	8.6	7,123	6.5

Source: Defense Medical Surveillance System (DMSS) as of 08AUG2016  
Prepared by Armed Forces Health Surveillance Branch (AFHSB)

**Figure 2.** Percentages of deployment health assessment forms with self-assessed health status rated as "fair" or "poor", by month, U.S. Armed Forces, August 2015–July 2016



**Figure 1.** Numbers of deployment health assessment and reassessment forms, by month, U.S. Armed Forces, January 2003–July 2016



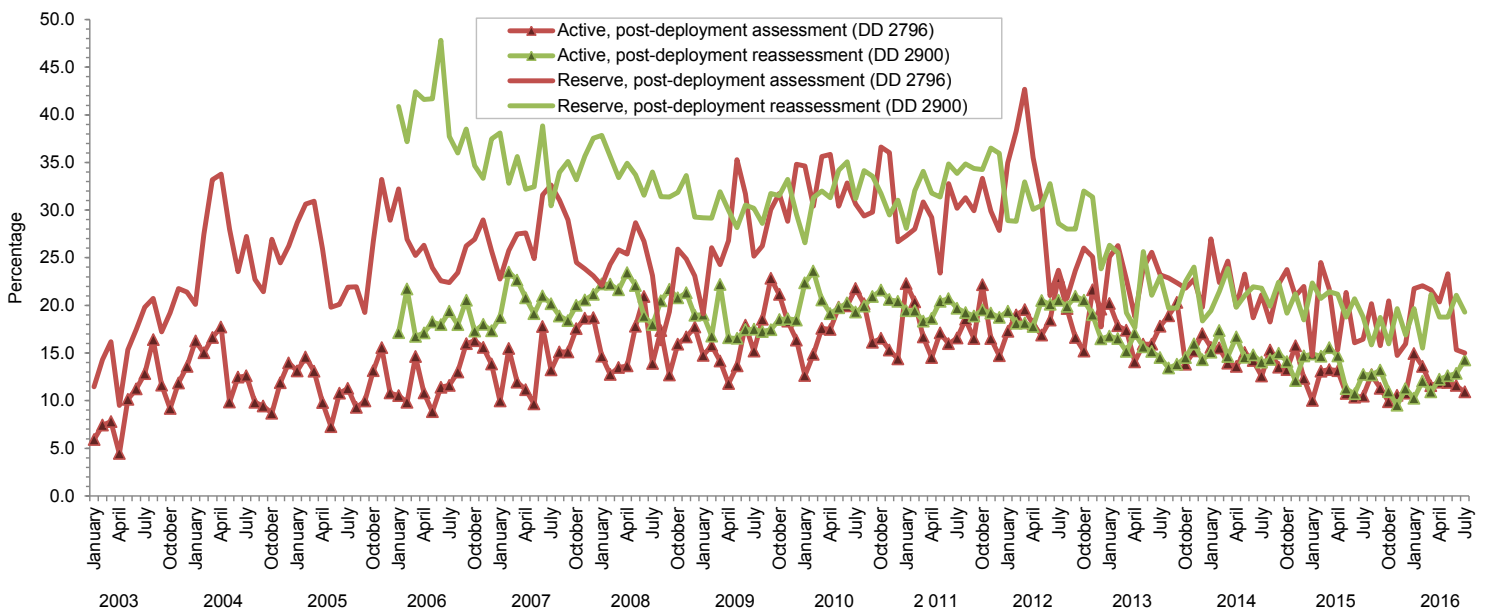
Data Source: Defense Medical Surveillance System

**Table 2.** Percentage of service members who endorsed selected questions or received referrals on health assessment forms, U.S. Armed Forces, August 2015–July 2016

	Army			Navy			Air Force			Marine Corps			All active component service members		
	Pre-deploy DD2795	Post-deploy DD2796	Reassessmt DD2900	Pre-deploy DD2795	Post-deploy DD2796	Reassessmt DD2900	Pre-deploy DD2795	Post-deploy DD2796	Reassessmt DD2900	Pre-deploy DD2795	Post-deploy DD2796	Reassessmt DD2900	Pre-deploy DD2795	Post-deploy DD2796	Reassessmt DD2900
<b>Active component</b>	n= 93,864 %	n= 45,678 %	n= 32,840 %	n= 6,638 %	n= 6,386 %	n= 6,544 %	n= 36,811 %	n= 33,780 %	n= 32,286 %	n= 16,020 %	n= 14,331 %	n= 11,392 %	n= 153,333 %	n= 100,175 %	n= 83,062 %
General health "fair" or "poor"	5.8	9.2	11.3	1.9	5.0	5.0	1.2	2.9	3.1	3.0	5.2	7.9	4.2	6.2	7.2
Health concerns, not wound or injury	7.0	19.6	16.2	3.1	11.4	6.8	3.2	7.8	7.1	3.3	7.9	7.7	5.5	13.4	10.7
Health worse now than before deployed	na	71.9	77.4	na	70.0	75.0	na	61.0	71.2	na	70.0	78.2	na	67.8	74.9
Exposure concerns	na	12.5	13.0	na	14.5	14.1	na	12.1	8.1	na	7.5	17.7	na	11.8	11.8
PTSD symptoms (2 or more)	na	5.9	8.4	na	3.8	5.0	na	2.3	2.8	na	2.8	6.4	na	4.1	5.7
Depression symptoms (any)	na	21.9	22.4	na	15.8	15.6	na	8.6	8.7	na	14.7	18.3	na	16.0	16.0
Referral indicated by provider (any)	6.9	17.5	16.1	6.7	27.0	13.7	6.1	13.8	12.6	5.6	14.8	14.3	6.5	16.5	14.3
Mental health referral indicated <sup>a</sup>	2.0	2.9	13.7	0.9	4.2	10.8	0.8	1.7	10.6	0.7	1.8	12.1	1.5	2.4	12.1
Medical visit following referral <sup>b</sup>	99.1	99.7	98.2	91.9	84.7	86.7	99.3	99.5	99.6	86.4	89.9	93.0	97.5	96.5	97.0
<b>Reserve component</b>	n= 24,328 %	n= 16,576 %	n= 13,665 %	n= 2,326 %	n= 1,882 %	n= 2,025 %	n= 13,262 %	n= 11,019 %	n= 9,186 %	n= 599 %	n= 272 %	n= 643 %	n= 40,515 %	n= 29,749 %	n= 25,519 %
General health "fair" or "poor"	1.2	10.4	12.2	0.3	9.0	9.4	0.9	4.6	4.5	0.7	6.6	8.6	1.1	8.1	9.1
Health concerns, not wound or injury	2.5	22.8	18.7	1.3	39.7	11.7	1.7	9.5	5.7	2.2	23.2	9.0	2.2	18.9	13.2
Health worse now than before deployed	na	70.8	77.3	na	76.5	77.3	na	65.3	73.3	na	74.3	79.0	na	69.1	75.9
Exposure concerns	na	17.6	20.6	na	40.0	32.8	na	16.1	11.6	na	27.6	20.5	na	18.5	18.3
PTSD symptoms (2 or more)	na	6.9	11.9	na	6.3	10.5	na	1.8	2.6	na	7.4	12.9	na	5.0	8.5
Depression symptoms (any)	na	18.8	21.4	na	17.6	22.8	na	8.6	7.7	na	15.1	22.4	na	15.0	16.6
Referral indicated by provider (any)	3.3	24.0	42.3	6.0	42.3	38.6	3.1	16.3	20.9	4.8	37.9	32.5	3.4	22.4	34.1
Mental health referral indicated <sup>a</sup>	0.7	3.4	41.8	0.3	3.5	38.1	0.3	1.5	20.6	1.7	1.8	31.6	0.6	2.7	33.6
Medical visit following referral <sup>b</sup>	85.7	98.8	46.2	93.8	99.8	63.9	75.1	75.8	58.2	100.0	54.9	40.2	83.0	93.0	50.3

<sup>a</sup>Includes behavioral health, combat stress and substance abuse referrals.  
<sup>b</sup>Record of inpatient or outpatient visit within 6 months after referral.

**Figure 3.** Percentages of service members who completed assessments and endorsed exposure concerns on post-deployment health assessments or reassessments, by component, by month, U.S. Armed Forces, January 2003–July 2016



Data Source: Defense Medical Surveillance System