

Deployment Health Assessments

U.S. Armed Forces

January 2017

(Data through December 2016)

Armed Forces Health Surveillance Branch

Update: Deployment Health Assessments, U.S. Armed Forces, January 2017

Since January 2003, pronounced fluctuations in the monthly numbers of pre- and post-deployment health assessment forms transmitted to the Armed Forces Health Surveillance Branch generally have corresponded to times of departure and return of large numbers of service members who deployed. Between April 2006 and December 2016, the number of post-deployment health reassessment (PDHRA) forms per month ranged from 5,632 to 36,863 (**Figure 1**). During the past 12 months (January 2016–December 2016), numbers of post-deployment health assessment and reassessment forms per month have been relatively stable (**Figure 1, Table 1**). The rolling 1-year averages for monthly numbers of post-deployment health reassessments for the most recent 12-month period were the 12 lowest averages since July 2006 (**data not shown**). For the purposes of this report about service members' responses to the assessment questions, it is important to note that the denominator is the total number of service members who completed deployment-related assessments, not the total number of service members eligible for the assessments.

During the past 12 months, the percentages of total returned deployers who rated their health as either “fair” or “poor” ranged from 6.0% to 8.9% on post-deployment health assessment questionnaires and from 6.5% to 9.3% on PDHRA questionnaires (**Figure 2**). The percentages of total service members who rated their health as either “fair” or “poor” on pre-deployment questionnaires during this period varied between 3.3% and 4.3%.

In general, the percentages of reserve component members reporting “health concerns” and “exposure concerns” on post-deployment assessments and reassessments have been higher than among active component members (**Table 2, Figure 3**). Compared to their respective counterparts, service members in the active component of the Marine Corps and reserve component of the Army were more likely to report exposure concerns 3–6 months after deployment than at the time of return from deployment (**Table 2**).

At the time of return from deployment, 16.5% of active component and 15.0% of reserve component service members reported any depression symptoms. Service members in the active and reserve components were about five and thirteen times as likely, respectively, to receive a mental health referral at the time of the PDHRA compared to the time of return from deployment. Moreover, at the time of the PDHRA (3–6 months after return), reservists were more than twice as likely to receive a mental health referral as members of the active component (**Table 2**).

Figure 1. Numbers of deployment health assessment and reassessment forms, by month, U.S. Armed Forces, January 2003–December 2016

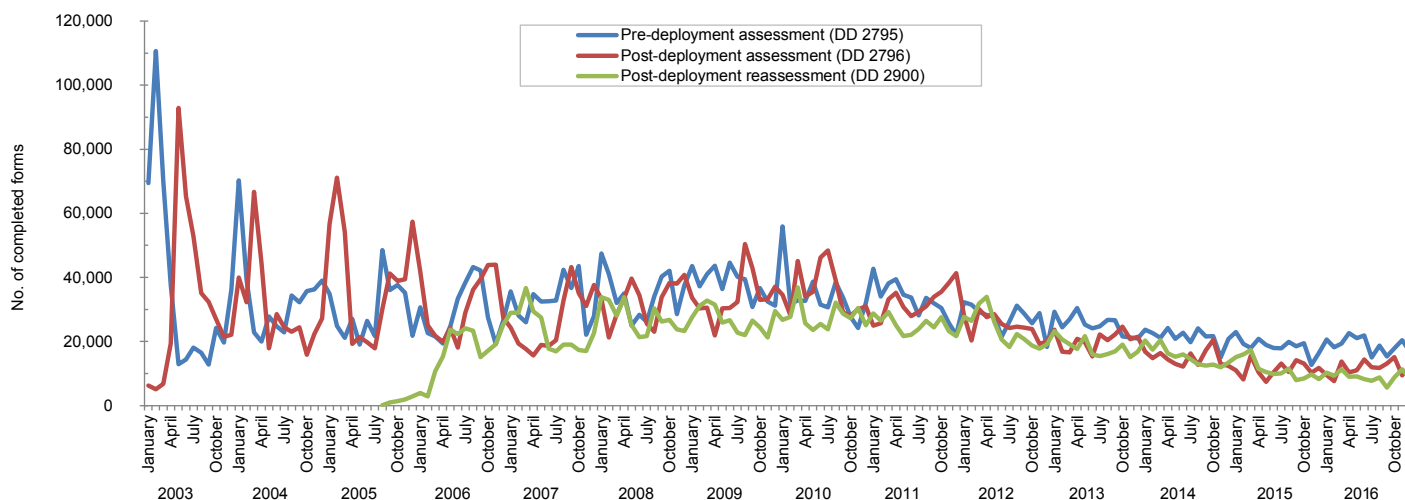


Table 1. Number of deployment-related health assessment forms, by month, U.S. Armed Forces, January 2016–December 2016

	Pre-deployment assessment DD 2795		Post-deployment assessment DD 2796		Post-deployment reassessment DD 2900	
	No.	%	No.	%	No.	%
Total	228,214	100	140,159	100	108,284	100
Average 2016	19,018	.	11,680	.	9,024	.
January	20,667	9.1	9,556	6.8	10,296	9.5
February	18,156	8.0	7,624	5.4	9,320	8.6
March	19,314	8.5	13,708	9.8	11,311	10.4
April	22,673	9.9	10,359	7.4	9,044	8.4
May	21,102	9.2	10,971	7.8	9,099	8.4
June	21,903	9.6	14,375	10.3	8,220	7.6
July	15,072	6.6	11,956	8.5	7,725	7.1
August	18,748	8.2	11,747	8.4	8,814	8.1
September	15,309	6.7	13,139	9.4	5,632	5.2
October	17,860	7.8	15,106	10.8	8,816	8.1
November	20,451	9.0	9,457	6.7	11,368	10.5
December	16,959	7.4	12,161	8.7	8,639	8.0

Source: Defense Medical Surveillance System (DMSS) as of 09-JAN-2017
Prepared by Armed Forces Health Surveillance Branch (AFHSB)

Figure 2. Percentages of deployment health assessment forms with self-assessed health status rated as “fair” or “poor,” by month, U.S. Armed Forces, January 2016–December 2016

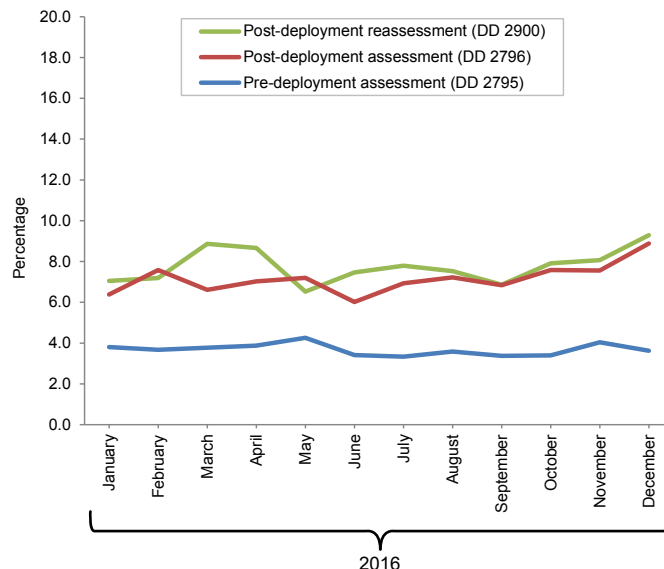


Table 2. Percentage of service members who endorsed selected questions or received referrals on health assessment forms, U.S. Armed Forces, January 2016–December 2016

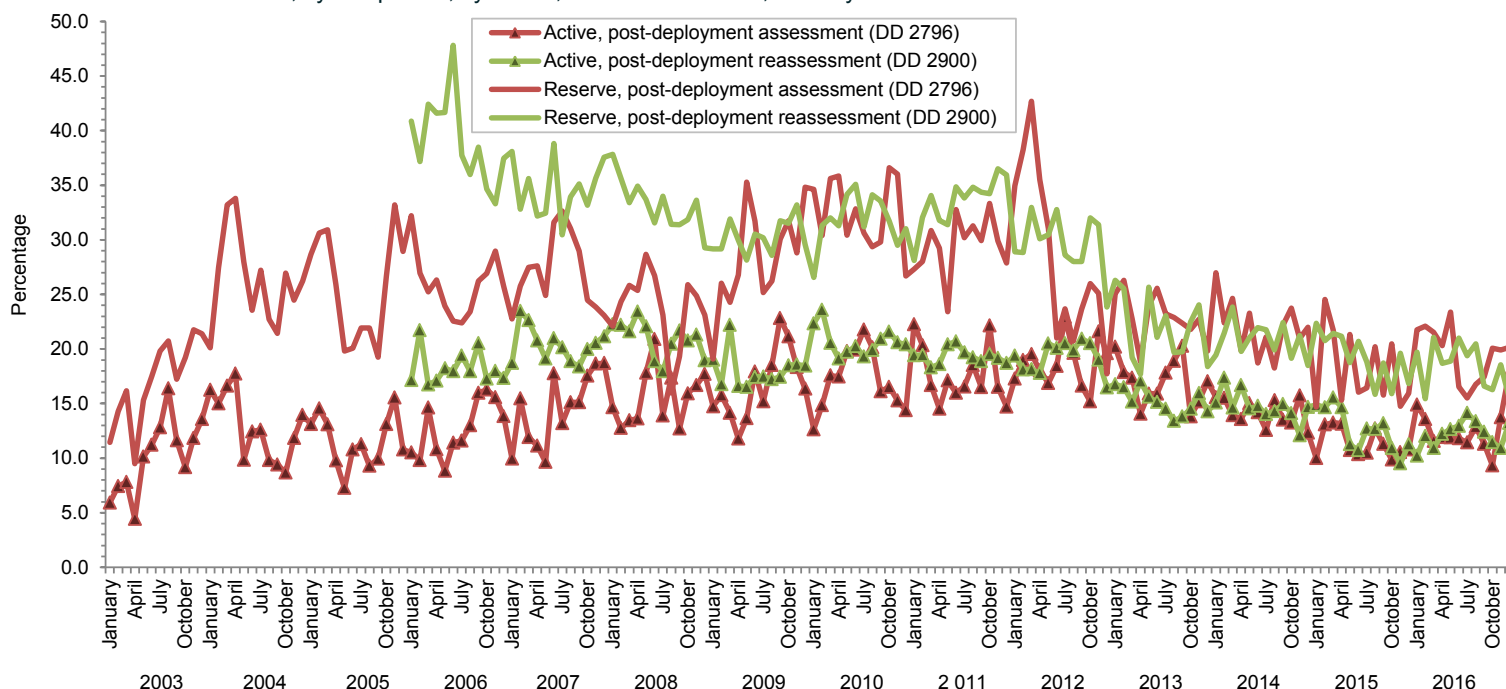
	Army			Navy			Air Force			Marine Corps			All active component service members		
	Pre-deploy DD2795	Post-deploy DD2796	Reassessmt DD2900	Pre-deploy DD2795	Post-deploy DD2796	Reassessmt DD2900	Pre-deploy DD2795	Post-deploy DD2796	Reassessmt DD2900	Pre-deploy DD2795	Post-deploy DD2796	Reassessmt DD2900	Pre-deploy DD2795	Post-deploy DD2796	Reassessmt DD2900
Active component	n= 92,640 %	n= 49,994 %	n= 34,304 %	n= 6,214 %	n= 6,331 %	n= 6,228 %	n= 36,176 %	n= 31,970 %	n= 30,753 %	n= 18,505 %	n= 12,382 %	n= 10,505 %	n= 153,535 %	n= 100,677 %	n= 81,790 %
General health "fair" or "poor"	5.6	9.6	11.5	1.7	5.4	5.4	1.2	3.0	3.2	2.8	5.2	7.8	4.1	6.7	7.5
Health concerns, not wound or injury	6.7	19.5	16.0	3.2	12.1	7.3	3.2	8.4	7.2	3.3	8.3	7.6	5.3	14.1	11.0
Health worse now than before deployed	na	72.6	77.0	na	70.2	75.5	na	61.6	71.1	na	68.6	77.9	na	68.5	74.8
Exposure concerns	na	13.0	12.8	na	14.7	15.3	na	13.1	8.6	na	8.0	17.8	na	12.5	12.1
PTSD symptoms (two or more)	na	6.1	7.9	na	4.2	5.3	na	2.2	2.8	na	2.8	6.1	na	4.4	5.6
Depression symptoms (any)	na	21.8	22.5	na	17.0	15.9	na	8.6	8.8	na	15.2	18.2	na	16.5	16.3
Referral indicated by provider (any)	6.5	17.4	14.9	8.1	23.6	13.8	6.0	14.2	12.8	4.7	16.9	14.4	6.3	16.7	14.0
Mental health referral indicated ^a	1.9	3.1	12.5	0.8	4.0	11.0	0.8	1.8	10.8	0.7	2.1	12.0	1.5	2.6	11.7
Medical visit following referral ^b	98.8	99.6	98.4	86.7	87.8	89.4	99.2	99.3	99.7	87.1	90.0	92.4	97.1	97.3	97.3
	Army			Navy			Air Force			Marine Corps			All reserve component service members		
	Pre-deploy DD2795	Post-deploy DD2796	Reassessmt DD2900	Pre-deploy DD2795	Post-deploy DD2796	Reassessmt DD2900	Pre-deploy DD2795	Post-deploy DD2796	Reassessmt DD2900	Pre-deploy DD2795	Post-deploy DD2796	Reassessmt DD2900	Pre-deploy DD2795	Post-deploy DD2796	Reassessmt DD2900
Reserve component	n= 25,184 %	n= 17,130 %	n= 13,031 %	n= 2,394 %	n= 2,024 %	n= 2,091 %	n= 14,065 %	n= 12,064 %	n= 9,846 %	n= 725 %	n= 536 %	n= 512 %	n= 42,368 %	n= 31,754 %	n= 25,480 %
General health "fair" or "poor"	1.4	10.4	11.9	0.4	9.0	7.9	0.9	4.7	4.7	0.7	8.4	7.2	1.2	8.1	8.7
Health concerns, not wound or injury	2.8	24.4	18.3	1.4	34.1	11.9	1.6	9.8	5.7	2.3	22.9	6.8	2.3	19.5	12.7
Health worse now than before deployed	na	71.6	76.8	na	73.9	76.4	na	65.3	72.1	na	79.3	78.1	na	69.5	75.0
Exposure concerns	na	18.7	21.2	na	38.1	34.4	na	16.6	11.1	na	28.4	23.2	na	19.3	18.4
PTSD symptoms (two or more)	na	7.1	10.7	na	5.3	9.2	na	1.7	2.4	na	6.7	13.5	na	4.9	7.4
Depression symptoms (any)	na	19.1	20.5	na	15.8	20.9	na	8.9	7.3	na	18.8	21.9	na	15.0	15.5
Referral indicated by provider (any)	3.2	22.6	39.9	6.6	39.8	36.5	3.1	17.7	20.7	5.7	35.4	28.7	3.4	22.1	32.0
Mental health referral indicated ^a	0.7	2.8	39.4	0.3	2.6	36.3	0.4	1.6	20.4	1.9	1.7	27.7	0.6	2.3	31.6
Medical visit following referral ^b	83.8	99.2	47.0	97.8	99.5	63.1	69.1	78.1	58.9	77.3	71.0	38.8	81.1	92.3	51.2

PTSD, post-traumatic stress disorder

^aIncludes behavioral health, combat stress and substance abuse referrals.

^bRecord of inpatient or outpatient visit within 6 months after referral.

Figure 3. Percentages of service members who completed assessments and endorsed exposure concerns on post-deployment health assessments or reassessments, by component, by month, U.S. Armed Forces, January 2003–December 2016



Data Source: Defense Medical Surveillance System