

Deployment Health Assessments

U.S. Armed Forces

March 2018

(Data through February 2018)

Armed Forces Health Surveillance Branch

Update: Deployment Health Assessments, U.S. Armed Forces, March 2018

Since January 2003, pronounced fluctuations in the monthly numbers of pre- and post-deployment health assessment (PDHA) forms transmitted to the Armed Forces Health Surveillance Branch (AFHSB) generally have corresponded to times of departure and return of large numbers of service members who deployed. Between April 2006 and February 2018, the number of post-deployment health reassessment (PDHRA) forms per month ranged from 5,712 to 36,863 (Figure 1). For the most recent 12 months (March 2017–February 2018), the average monthly number of pre-deployment health assessments (22,126) was the highest of any 12-month period since August 2014 (Table 1, data not shown). The average monthly number of PDHRA forms (8,786) for the same time period was the lowest 1-year average since July 2006. For the purposes of this report about service members’ responses to the assessment questions, it is important to note that the denominator is the total number of service members who completed deployment-related assessments, not the total number of service members eligible for the assessments.

During the past 12 months, the percentages of total returned deployers who rated their health as either “fair” or “poor” ranged from 6.4% to 8.8% on PDHA questionnaires and from 6.1% to 9.6% on PDHRA questionnaires (Figure 2). The percentages of total service members who rated their health as either “fair” or “poor” on pre-deployment questionnaires during this period varied between 3.1% and 4.5%.

In general, the percentages of “health concerns” and “exposure concerns” self-reported on PDHA and PDHRA forms were higher among reserve component members than among active component members (Table 2, Figure 3). Unlike their counterparts in the other services, service members in the active component of the Marine Corps were 1.3 times as likely to report exposure concerns 3–6 months after deployment, compared to the time of their return from deployment. In addition, active component Marine Corps members were nearly twice as likely to report two or more PTSD symptoms at the time of the PDHRA compared to the time of the PDHA (Table 2).

At the time of return from deployment, 17.1% of active component and 14.5% of reserve component service members reported any depression symptoms. Service members in the active and reserve components were more than 4 and 13 times as likely, respectively, to receive a mental health referral at the time of the PDHRA, compared to the time of return from deployment. Moreover, at the time of the PDHRA, reservists were more than two and a half times as likely to receive a mental health referral as members of the active component (Table 2).

Figure 1. Numbers of deployment health assessment and reassessment forms, by month, U.S. Armed Forces, January 2003–February 2018

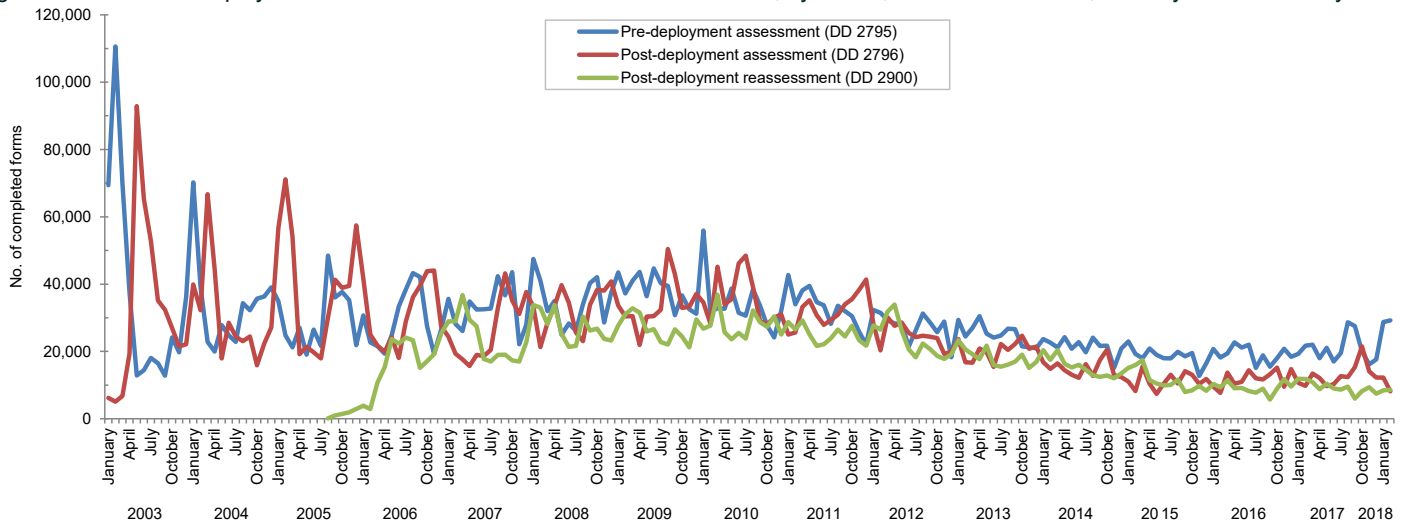
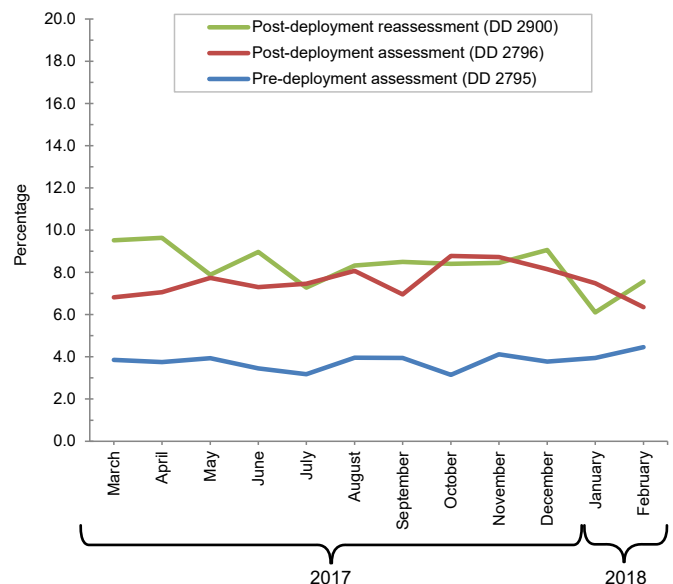


Table 1. Number of deployment-related health assessment forms, by month, U.S. Armed Forces, March 2017–February 2018

| | Pre-deployment assessment DD 2795 | | Post-deployment assessment DD 2796 | | Post-deployment reassessment DD 2900 | |
|----------------|--------------------------------------|-------|---------------------------------------|-------|---|-------|
| | No. | % | No. | % | No. | % |
| Total | 265,517 | 100.0 | 153,892 | 100.0 | 105,436 | 100.0 |
| Average | 22,126 | . | 12,824 | . | 8,786 | . |
| 2017 | | | | | | |
| March | 22,018 | 8.3 | 13,392 | 8.7 | 10,919 | 10.4 |
| April | 17,995 | 6.8 | 12,060 | 7.8 | 8,772 | 8.3 |
| May | 21,053 | 7.9 | 9,673 | 6.3 | 10,433 | 9.9 |
| June | 17,008 | 6.4 | 10,248 | 6.7 | 8,984 | 8.5 |
| July | 19,483 | 7.3 | 12,664 | 8.2 | 8,678 | 8.2 |
| August | 28,676 | 10.8 | 12,356 | 8.0 | 9,593 | 9.1 |
| September | 27,541 | 10.4 | 15,327 | 10.0 | 5,995 | 5.7 |
| October | 20,027 | 7.5 | 21,498 | 14.0 | 8,257 | 7.8 |
| November | 16,134 | 6.1 | 14,045 | 9.1 | 9,368 | 8.9 |
| December | 17,616 | 6.6 | 12,240 | 8.0 | 7,444 | 7.1 |
| 2018 | | | | | | |
| January | 28,728 | 10.8 | 12,221 | 7.9 | 8,444 | 8.0 |
| February | 29,238 | 11.0 | 8,168 | 5.3 | 8,549 | 8.1 |

Source: Defense Medical Surveillance System (DMSS) as of 07-MAR-2018
Prepared by Armed Forces Health Surveillance Branch (AFHSB)

Figure 2. Percentages of deployment health assessment forms with self-assessed health status rated as either “fair” or “poor,” by month, U.S. Armed Forces, March 2017–February 2018



Data Source: Defense Medical Surveillance System

Table 2. Percentage of service members who endorsed selected questions or received referrals on health assessment forms, U.S. Armed Forces, March 2017–February 2018

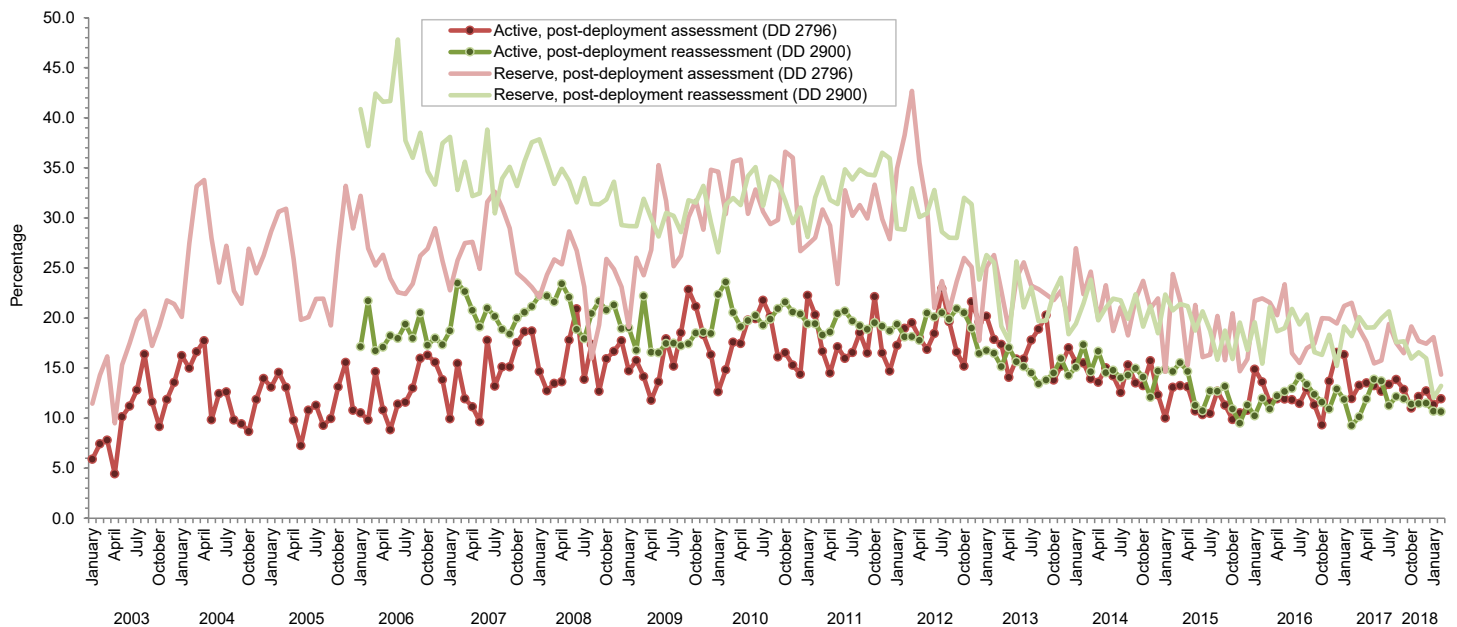
| | Army | | | Navy | | | Air Force | | | Marine Corps | | | All active component service members | | |
|---|-------------------|--------------------|-------------------|-------------------|--------------------|-------------------|-------------------|--------------------|-------------------|-------------------|--------------------|-------------------|---------------------------------------|--------------------|-------------------|
| | Pre-deploy DD2795 | Post-deploy DD2796 | Reassessmt DD2900 | Pre-deploy DD2795 | Post-deploy DD2796 | Reassessmt DD2900 | Pre-deploy DD2795 | Post-deploy DD2796 | Reassessmt DD2900 | Pre-deploy DD2795 | Post-deploy DD2796 | Reassessmt DD2900 | Pre-deploy DD2795 | Post-deploy DD2796 | Reassessmt DD2900 |
| Active component | n= 115,665 % | n= 52,011 % | n= 32,544 % | n= 5,946 % | n= 6,057 % | n= 6,626 % | n= 38,770 % | n= 33,482 % | n= 29,136 % | n= 16,534 % | n= 15,649 % | n= 9,416 % | n= 176,915 % | n= 107,199 % | n= 77,722 % |
| General health "fair" or "poor" | 5.6 | 10.2 | 11.6 | 2.1 | 7.2 | 7.4 | 1.5 | 3.5 | 3.7 | 2.4 | 5.9 | 8.3 | 4.3 | 7.3 | 7.9 |
| Health concerns, not wound or injury | 6.5 | 18.7 | 14.3 | 4.4 | 14.0 | 10.7 | 3.3 | 9.4 | 7.5 | 3.5 | 9.4 | 8.3 | 5.5 | 14.2 | 10.7 |
| Health worse now than before deployed | na | 73.2 | 76.0 | na | 72.0 | 75.2 | na | 62.9 | 71.0 | na | 68.7 | 76.7 | na | 69.3 | 74.1 |
| Exposure concerns | na | 13.0 | 13.2 | na | 18.6 | 18.5 | na | 12.7 | 8.5 | na | 8.9 | 11.7 | na | 12.7 | 11.7 |
| PTSD symptoms (two or more) | na | 6.2 | 8.3 | na | 9.2 | 9.3 | na | 2.3 | 2.9 | na | 3.0 | 5.2 | na | 4.7 | 6.0 |
| Depression symptoms (any) | na | 21.5 | 21.9 | na | 23.2 | 22.1 | na | 9.2 | 9.3 | na | 17.2 | 19.1 | na | 17.1 | 16.9 |
| Referral indicated by provider (any) | 5.4 | 18.7 | 14.6 | 11.1 | 29.9 | 20.7 | 6.5 | 14.5 | 10.8 | 4.6 | 19.5 | 15.1 | 5.7 | 18.1 | 13.8 |
| Mental health referral indicated ^a | 1.7 | 2.9 | 12.5 | 1.2 | 7.0 | 17.2 | 1.2 | 1.8 | 9.2 | 0.6 | 2.1 | 12.9 | 1.4 | 2.7 | 11.7 |
| Medical visit following referral ^b | 99.4 | 99.5 | 99.1 | 94.1 | 90.5 | 88.7 | 96.9 | 99.2 | 98.9 | 90.9 | 94.7 | 91.3 | 97.7 | 97.6 | 97.1 |
| | Army | | | Navy | | | Air Force | | | Marine Corps | | | All reserve component service members | | |
| | Pre-deploy DD2795 | Post-deploy DD2796 | Reassessmt DD2900 | Pre-deploy DD2795 | Post-deploy DD2796 | Reassessmt DD2900 | Pre-deploy DD2795 | Post-deploy DD2796 | Reassessmt DD2900 | Pre-deploy DD2795 | Post-deploy DD2796 | Reassessmt DD2900 | Pre-deploy DD2795 | Post-deploy DD2796 | Reassessmt DD2900 |
| Reserve component | n= 36,818 % | n= 22,482 % | n= 13,375 % | n= 2,892 % | n= 2,339 % | n= 2,280 % | n= 16,310 % | n= 13,286 % | n= 10,423 % | n= 1,185 % | n= 616 % | n= 640 % | n= 57,205 % | n= 38,723 % | n= 26,718 % |
| General health "fair" or "poor" | 2.1 | 10.0 | 13.0 | 0.5 | 11.2 | 9.6 | 1.1 | 4.3 | 4.5 | 0.8 | 7.0 | 7.3 | 1.7 | 8.1 | 9.3 |
| Health concerns, not wound or injury | 3.1 | 21.2 | 19.5 | 2.0 | 35.7 | 11.7 | 1.8 | 9.6 | 5.2 | 2.4 | 21.4 | 6.1 | 2.6 | 18.1 | 12.9 |
| Health worse now than before deployed | na | 70.9 | 77.0 | na | 72.0 | 75.2 | na | 67.4 | 72.2 | na | 77.6 | 73.6 | na | 69.9 | 74.9 |
| Exposure concerns | na | 17.5 | 21.2 | na | 36.6 | 34.9 | na | 13.3 | 9.0 | na | 25.3 | 18.1 | na | 17.4 | 17.5 |
| PTSD symptoms (two or more) | na | 6.2 | 10.6 | na | 7.5 | 9.9 | na | 1.6 | 2.0 | na | 5.5 | 9.7 | na | 4.7 | 7.2 |
| Depression symptoms (any) | na | 17.6 | 20.8 | na | 20.9 | 21.8 | na | 8.0 | 6.8 | na | 19.2 | 19.7 | na | 14.5 | 15.4 |
| Referral indicated by provider (any) | 3.6 | 22.2 | 40.5 | 4.0 | 40.1 | 34.4 | 4.0 | 14.6 | 18.2 | 4.4 | 35.7 | 25.6 | 3.8 | 20.9 | 31.0 |
| Mental health referral indicated ^a | 0.9 | 2.6 | 39.9 | 0.6 | 4.2 | 33.9 | 0.5 | 1.3 | 18.0 | 1.5 | 3.6 | 25.3 | 0.8 | 2.3 | 30.5 |
| Medical visit following referral ^b | 84.2 | 99.4 | 47.9 | 98.5 | 98.5 | 60.8 | 79.0 | 78.9 | 71.4 | 53.3 | 84.6 | 38.2 | 83.1 | 94.1 | 53.9 |

PTSD, post-traumatic stress disorder

^aIncludes behavioral health, combat stress and substance abuse referrals.

^bRecord of inpatient or outpatient visit within 6 months after referral.

Figure 3. Percentages of service members with completed assessments who endorsed exposure concerns on post-deployment health assessments or reassessments, by component, by month, U.S. Armed Forces, January 2003–February 2018



Data Source: Defense Medical Surveillance System