

# Deployment Health Assessments

## U.S. Armed Forces

May 2018

(Data through April 2018)

Armed Forces Health Surveillance Branch

# Update: Deployment Health Assessments, U.S. Armed Forces, May 2018

Since January 2003, pronounced fluctuations in the monthly numbers of pre- and post-deployment health assessment (PDHA) forms transmitted to the Armed Forces Health Surveillance Branch (AFHSB) generally have corresponded to times of departure and return of large numbers of service members who deployed. Between April 2006 and April 2018, the number of post-deployment health reassessment (PDHRA) forms per month ranged from 5,715 to 36,863 (Figure 1). For the most recent 12 months (May 2017–April 2018), the average monthly number of pre-deployment health assessments (23,549) was the highest of any 12-month period since April 2014 (Table 1, data not shown). The average monthly number of PDHRA forms (8,625) for the same time period was the lowest 1-year average since July 2006. For the purposes of this report about service members' responses to the assessment questions, it is important to note that the denominator is the total number of service members who completed deployment-related assessments, not the total number of service members eligible for the assessments.

During the past 12 months, the percentages of total returned deployers who rated their health as either "fair" or "poor" ranged from 6.9% to 8.8% on PDHA questionnaires and from 6.1% to 9.0% on PDHRA questionnaires (Figure 2). The percentages of total service members who rated their health as either "fair" or "poor" on pre-deployment questionnaires during this period varied between 3.1% and 4.8%.

In general, the percentages of "health concerns" and "exposure concerns" self-reported on PDHA and PDHRA forms were higher among reserve component members than among active component members (Table 2, Figure 3). Service members in the active component of the Marine Corps were 1.6 times as likely to report two or more PTSD symptoms 3–6 months after deployment, compared to the time of their return from deployment. Reserve component Marine Corps members were approximately twice as likely to report two or more PTSD symptoms at the time of the PDHRA compared to the time of the PDHA (Table 2).

At the time of return from deployment, 17.2% of active component and 14.7% of reserve component service members reported any depression symptoms. Service members in the active and reserve components were more than 4 and 12 times as likely, respectively, to receive a mental health referral at the time of the PDHRA, compared to the time of return from deployment. Moreover, at the time of the PDHRA, reservists were more than two and a half times as likely to receive a mental health referral as members of the active component (Table 2).

Figure 1. Numbers of deployment health assessment and reassessment forms, by month, U.S. Armed Forces, January 2003–April 2018

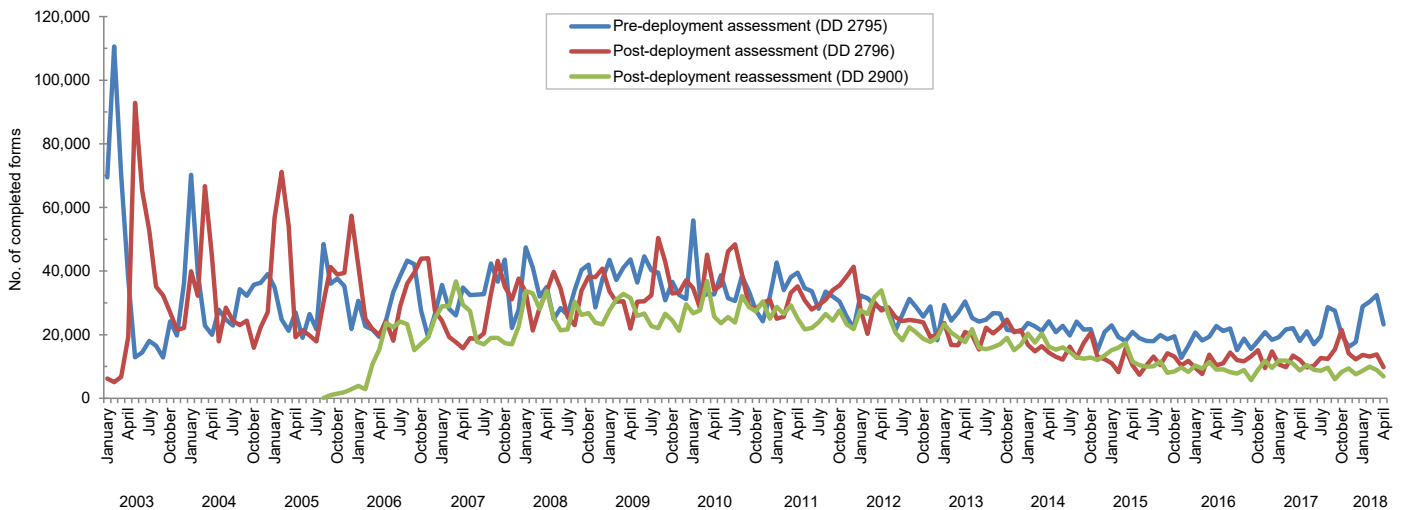
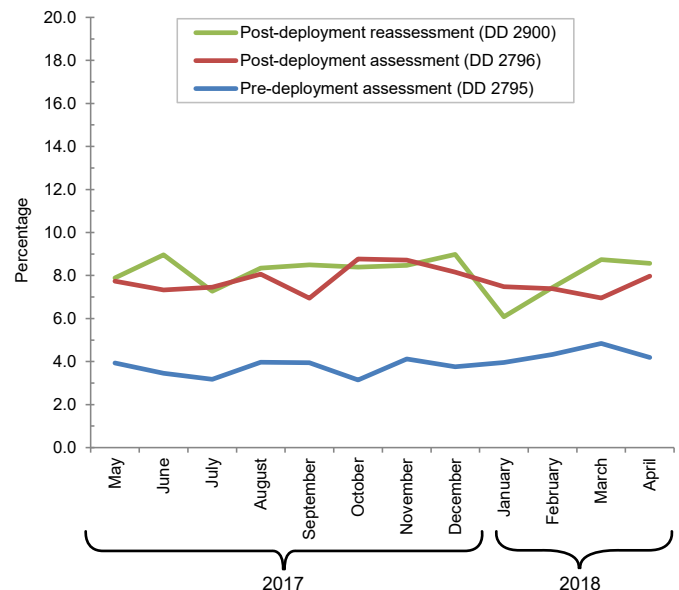


Table 1. Number of deployment-related health assessment forms, by month, U.S. Armed Forces, May 2017–April 2018

	Pre-deployment assessment DD 2795		Post-deployment assessment DD 2796		Post-deployment reassessment DD 2900	
	No.	%	No.	%	No.	%
Total	282,585	100.0	158,547	100.0	103,498	100.0
Average	23,549	.	13,212	.	8,625	.
<b>2017</b>						
May	21,063	7.5	9,682	6.1	10,442	10.1
June	17,012	6.0	10,257	6.5	8,998	8.7
July	19,489	6.9	12,670	8.0	8,691	8.4
August	28,686	10.2	12,366	7.8	9,626	9.3
September	27,558	9.8	15,345	9.7	6,030	5.8
October	20,033	7.1	21,532	13.6	8,288	8.0
November	16,143	5.7	14,065	8.9	9,450	9.1
December	17,662	6.3	12,257	7.7	7,543	7.3
<b>2018</b>						
January	28,864	10.2	13,621	8.6	8,654	8.4
February	30,387	10.8	13,153	8.3	9,933	9.6
March	32,419	11.5	13,808	8.7	8,922	8.6
April	23,269	8.2	9,791	6.2	6,921	6.7

Source: Defense Medical Surveillance System (DMSS) as of 08-MAY-2018  
Prepared by Armed Forces Health Surveillance Branch (AFHSB)

Figure 2. Percentages of deployment health assessment forms with self-assessed health status rated as either "fair" or "poor," by month, U.S. Armed Forces, May 2017–April 2018



Data Source: Defense Medical Surveillance System

**Table 2.** Percentage of service members who endorsed selected questions or received referrals on health assessment forms, U.S. Armed Forces, May 2017–April 2018

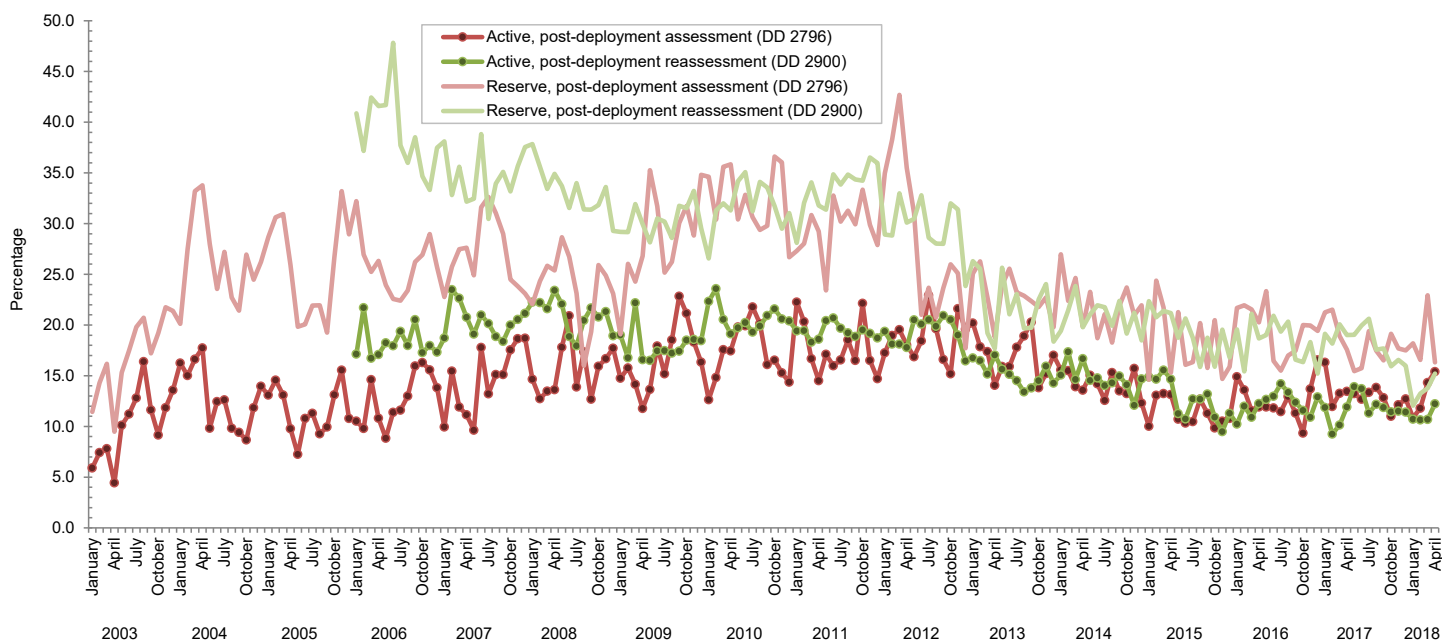
	Army			Navy			Air Force			Marine Corps			All active component service members		
	Pre-deploy DD2795	Post-deploy DD2796	Reassessmt DD2900	Pre-deploy DD2795	Post-deploy DD2796	Reassessmt DD2900	Pre-deploy DD2795	Post-deploy DD2796	Reassessmt DD2900	Pre-deploy DD2795	Post-deploy DD2796	Reassessmt DD2900	Pre-deploy DD2795	Post-deploy DD2796	Reassessmt DD2900
<b>Active component</b>	n= 124,779 %	n= 54,020 %	n= 32,110 %	n= 5,676 %	n= 6,034 %	n= 5,911 %	n= 38,776 %	n= 34,575 %	n= 29,390 %	n= 15,548 %	n= 13,937 %	n= 10,438 %	n= 184,779 %	n= 108,566 %	n= 77,849 %
General health "fair" or "poor"	5.8	10.2	11.5	2.1	7.4	7.5	1.5	3.5	3.6	2.3	6.1	8.2	4.5	7.4	7.8
Health concerns, not wound or injury	6.5	18.4	13.7	4.6	14.3	11.0	3.4	9.6	7.4	3.7	10.1	8.1	5.5	14.3	10.4
Health worse now than before deployed	na	73.5	75.3	na	72.2	75.1	na	63.0	70.9	na	68.9	76.3	na	69.5	73.7
Exposure concerns	na	13.0	13.3	na	19.9	20.2	na	12.7	8.5	na	10.7	11.7	na	13.0	11.8
PTSD symptoms (two or more)	na	6.3	8.0	na	9.0	9.7	na	2.1	2.8	na	3.2	5.1	na	4.7	5.8
Depression symptoms (any)	na	21.7	21.8	na	22.6	22.0	na	9.4	9.1	na	17.1	18.5	na	17.2	16.6
Referral indicated by provider (any)	5.5	19.4	13.8	11.3	30.3	21.9	6.7	14.8	10.5	4.8	21.1	15.1	5.9	18.8	13.3
Mental health referral indicated <sup>a</sup>	1.7	3.1	11.7	1.3	6.8	18.3	1.2	1.8	8.9	0.6	2.2	13.0	1.5	2.8	11.3
Medical visit following referral <sup>b</sup>	99.1	98.4	99.0	93.6	85.2	86.6	96.8	98.5	98.8	92.4	92.4	89.8	97.5	96.1	96.2
	Army			Navy			Air Force			Marine Corps			All reserve component service members		
	Pre-deploy DD2795	Post-deploy DD2796	Reassessmt DD2900	Pre-deploy DD2795	Post-deploy DD2796	Reassessmt DD2900	Pre-deploy DD2795	Post-deploy DD2796	Reassessmt DD2900	Pre-deploy DD2795	Post-deploy DD2796	Reassessmt DD2900	Pre-deploy DD2795	Post-deploy DD2796	Reassessmt DD2900
<b>Reserve component</b>	n= 40,051 %	n= 22,812 %	n= 11,348 %	n= 2,992 %	n= 2,351 %	n= 2,254 %	n= 16,674 %	n= 13,381 %	n= 10,543 %	n= 1,143 %	n= 753 %	n= 603 %	n= 60,860 %	n= 39,297 %	n= 24,748 %
General health "fair" or "poor"	2.2	10.2	12.9	0.4	11.7	9.2	1.0	4.2	4.3	0.8	7.6	7.8	1.8	8.2	8.8
Health concerns, not wound or injury	3.4	21.6	19.7	1.8	36.5	11.8	1.7	9.5	4.9	2.5	18.9	7.5	2.9	18.3	12.4
Health worse now than before deployed	na	71.5	76.6	na	72.4	74.7	na	67.4	72.2	na	76.0	72.8	na	70.3	74.5
Exposure concerns	na	18.0	20.6	na	37.5	35.0	na	13.6	8.9	na	21.8	16.6	na	17.8	16.8
PTSD symptoms (two or more)	na	6.3	10.5	na	7.7	9.8	na	1.7	1.9	na	4.9	9.8	na	4.8	6.8
Depression symptoms (any)	na	17.7	20.4	na	20.9	21.3	na	8.0	6.7	na	20.5	19.4	na	14.7	14.6
Referral indicated by provider (any)	3.9	23.6	39.9	4.4	38.9	35.3	4.1	15.1	17.9	4.6	36.8	27.2	4.0	21.9	29.8
Mental health referral indicated <sup>a</sup>	0.9	2.8	39.0	0.4	3.8	34.8	0.6	1.4	17.6	1.7	3.1	26.5	0.8	2.4	29.2
Medical visit following referral <sup>b</sup>	78.4	99.2	47.1	98.6	98.4	58.8	77.8	77.8	74.1	75.0	77.4	42.1	79.6	93.1	54.1

PTSD, post-traumatic stress disorder

<sup>a</sup>Includes behavioral health, combat stress and substance abuse referrals.

<sup>b</sup>Record of inpatient or outpatient visit within 6 months after referral.

**Figure 3.** Percentages of service members with completed assessments who endorsed exposure concerns on post-deployment health assessments or reassessments, by component, by month, U.S. Armed Forces, January 2003–April 2018



Data Source: Defense Medical Surveillance System