



DEPARTMENT OF DEFENSE (AFHSB)

Seasonal Influenza Surveillance Summary

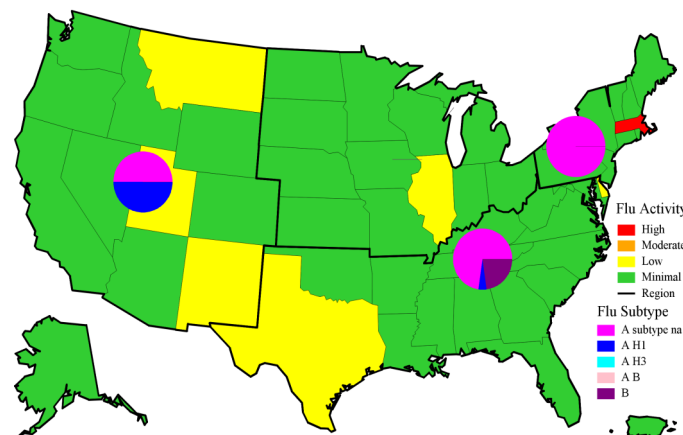
Northern Command -- Week 42 (14 October—20 October 2018)



In NORTHCOM during week 42

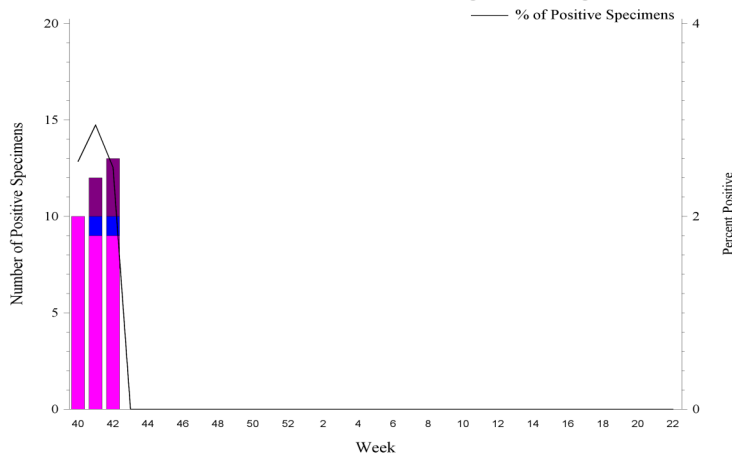
- ◆ Influenza activity was minimal to low for NORTHCOM, with the exception of Massachusetts, which was high.
- ◆ The percentage of outpatient visits due to ILI has been below baseline, but slightly above previous seasons.
- ◆ The percentage of positive lab tests were 2.5% for service members and 3.5% for other beneficiaries for week 42.
- ◆ No influenza hospitalizations (RMEs) were reported for week 42. (Season totals: 0 Service members and 2 other beneficiaries).

NORTHCOM Service Members, Influenza Activity and Virus Subtype, During the Last 2 Weeks

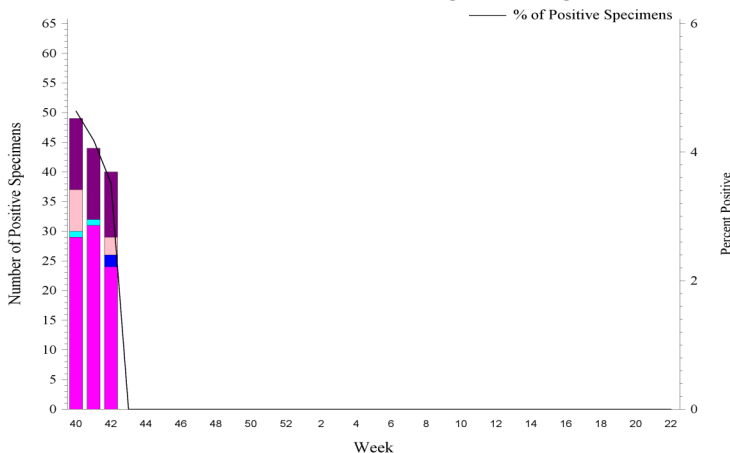


| 2018 – 2019 NORTHCOM Season Totals | | | | | | |
|------------------------------------|--------|--------|-----------|-------|----|--------------------|
| | A/H1N1 | A/H3N2 | A/Untyped | Flu B | AB | Overall % Positive |
| Service Members | 2 | 0 | 28 | 5 | 0 | 2.66 |
| Dependents | 2 | 2 | 84 | 35 | 10 | 4.10 |

NORTHCOM Service Members, Influenza Positive Specimens Reported to AFHSB

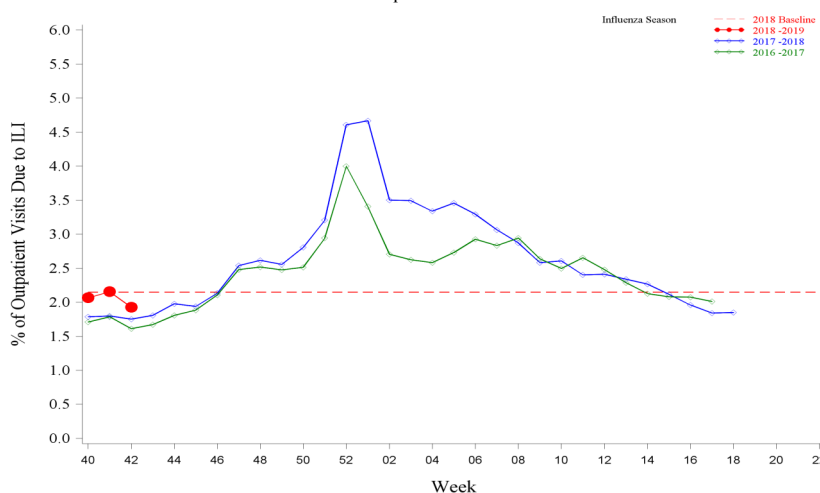


NORTHCOM Beneficiaries, Influenza Positive Specimens Reported to AFHSB



Disclaimer: Medical data from Military Treatment Facilities that are using MHS GENESIS are not available in DMSS. This includes Naval Hospital Oak Harbor, Naval Hospital Bremerton, Air Force Medical Services Fairchild, and Madigan Army Medical Center. Therefore, individuals who are expected to seek care at one of these facilities are currently being removed from the study population as we will not capture their medical encounters.

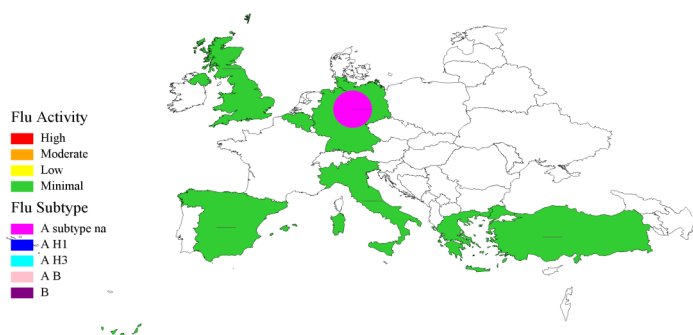
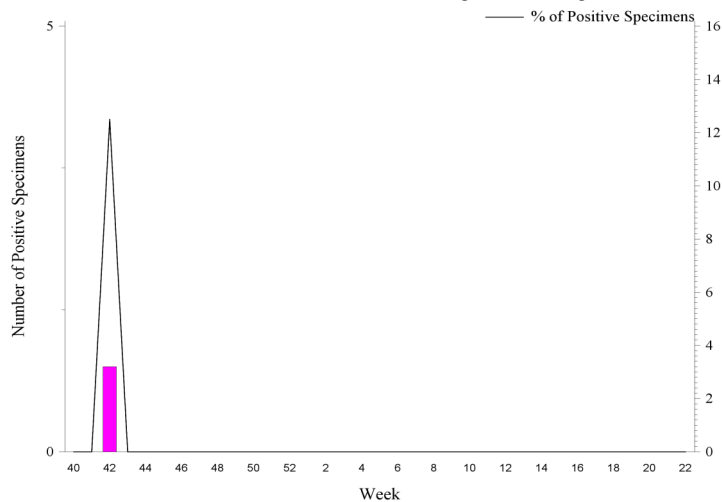
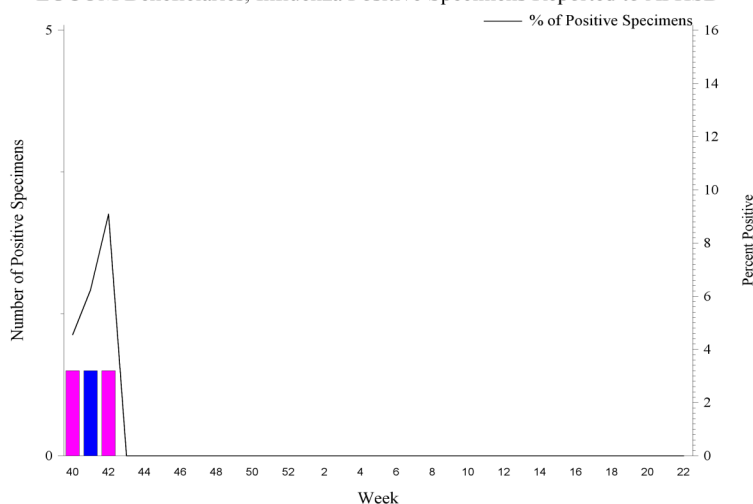
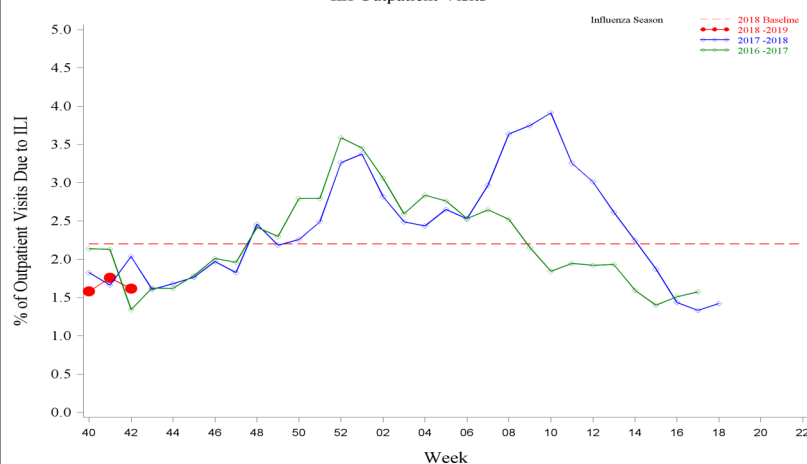
NORTHCOM Service Members, 2018-2019 and Previous 2 Influenza Seasons ILI Outpatient Visits



For inquiries or comments please contact dha.ncr.health-surv.list.ib-alert-response@mail.mil

**European Command -- Week 42****In EUCOM during week 42**

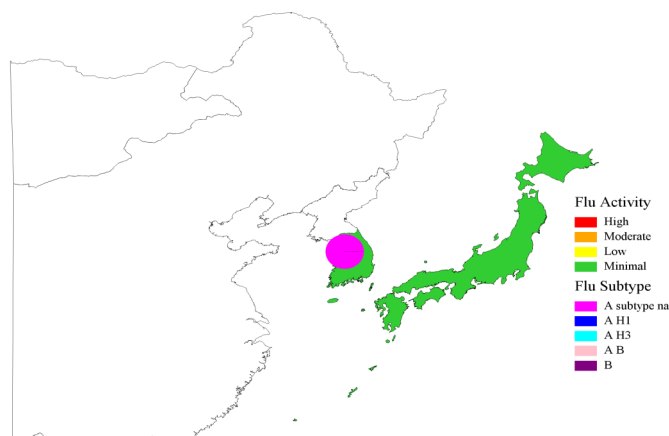
- ◆ Influenza activity has been minimal across EUCOM.
- ◆ The percentage of outpatient visits has been below baseline and similar to previous seasons.
- ◆ The percentage of positive lab tests were 12.5% for service members and 9.1% for other beneficiaries for week 42.
- ◆ No influenza hospitalizations (RMEs) were reported for week 42. (Season totals: 0 Service members and 0 other beneficiaries)

EUCOM Service Members, Influenza Activity and Virus Subtype, During the Last 2 Weeks**EUCOM Service Members, Influenza Positive Specimens Reported to AFHSB****EUCOM Beneficiaries, Influenza Positive Specimens Reported to AFHSB****EUCOM Service Members, 2018-2019 and Previous 2 Influenza Seasons****2018-2019 EUCOM Season Totals**

| | A/H1N1 | A/H3N2 | A/Untyped | Influenza B | AB | Overall % Positive |
|-----------------|--------|--------|-----------|-------------|----|--------------------|
| Service Members | 0 | 0 | 1 | 0 | 0 | 2.00 |
| Dependents | 1 | 0 | 2 | 0 | 0 | 6.12 |

**Indo-Pacific Command -- Week 42****In PACOM during week 42**

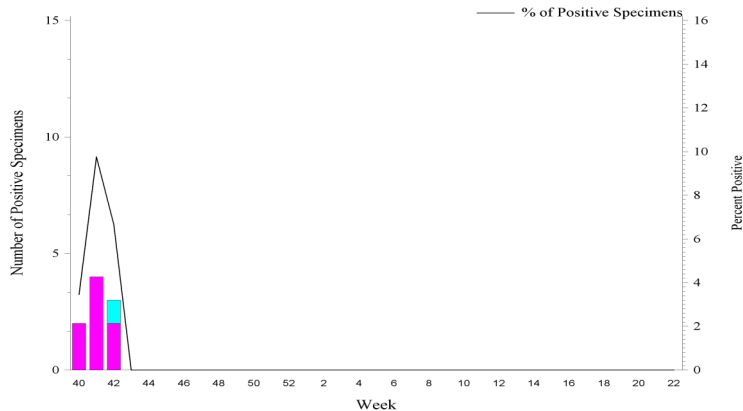
- ◆ Influenza activity has been minimal across PACOM.
- ◆ The percentage of outpatient visits due to ILI has been below baseline and similar to previous seasons.
- ◆ The percentage of positive lab tests were 6.7% for service members and 6.7% for other beneficiaries during week 42.
- ◆ Two influenza hospitalizations (RMEs) were reported for week 42 (1 Service member and 1 other beneficiary).
(Season totals: 1 Service member and 2 other beneficiaries)

PACOM Service Members, Influenza Activity and Virus Subtype, During the Last 2 Weeks
South Korea and Japan

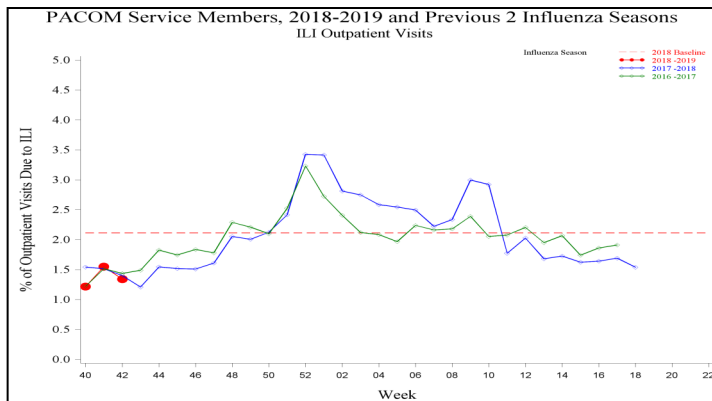
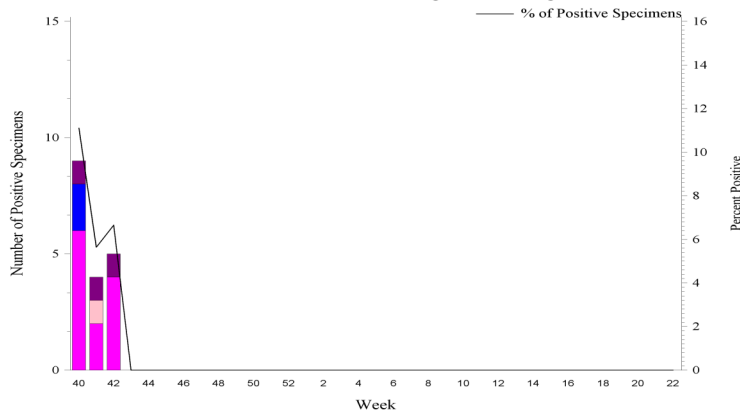
| PACOM: Guam and Hawaii Influenza Activity and HL7 Test Positive (MAP: SM+BN, 2 wks) | | | | | | |
|---|--------------------|----------|-------|-----------|---|----|
| Area Name | Influenza Activity | HL7 Type | | | | |
| | | A(H1) | A(H3) | A Untyped | B | AB |
| Guam | Minimal | 0 | 1 | 6 | 0 | 0 |
| Hawaii* | Minimal | 0 | 0 | 2 | 1 | 1 |

*Hawaii HL7 Type counts may include samples received from Guam, but tested in Hawaii

PACOM Service Members, Influenza Positive Specimens Reported to AFHSB



PACOM Beneficiaries, Influenza Positive Specimens Reported to AFHSB



| 2018-2019 PACOM Season Totals | | | | | | |
|-------------------------------|--------|--------|-----------|-------|--------|--------------------|
| | A/H1N1 | A/H3N2 | A/Untyped | Flu B | Flu AB | Overall % Positive |
| Service Members | 0 | 1 | 8 | 0 | 0 | 6.25 |
| Dependents | 2 | 0 | 12 | 3 | 1 | 7.93 |

For inquiries or comments please contact dha.ncr.health-surv.list.ib-alert-response@mail.mil

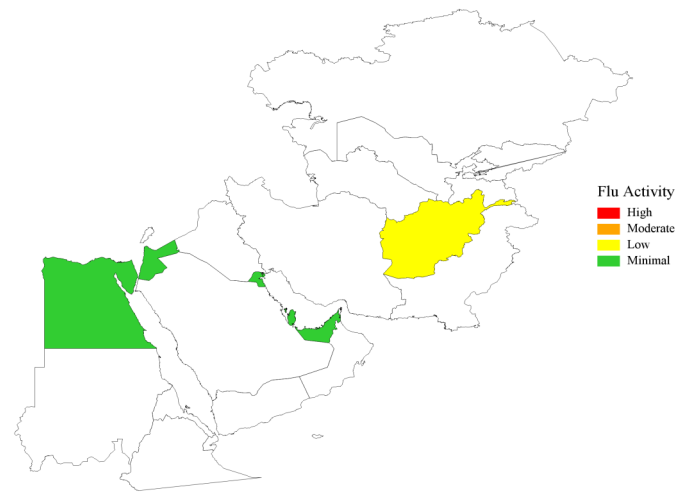


Central Command -- Week 42

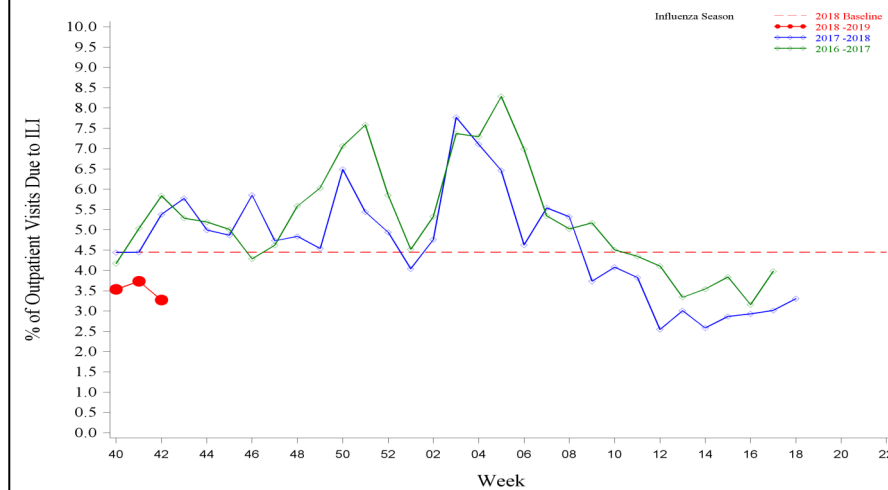
In CENTCOM during week 42

- ◆ Influenza activity was minimal in CENTCOM locations with available data with the exception of Afghanistan, which had low activity.
- ◆ The percentage of outpatient visits due to ILI has been below baseline and previous seasons.
- ◆ No influenza hospitalizations (RMEs) were reported for week 42. (Season totals: 0 Service members)

CENTCOM, Influenza Activity, During the Last 2 Weeks



CENTCOM Service Members, 2018-2019 and Previous 2 Influenza Seasons
ILI Outpatient Visits



Southern Command -- Week 42

In SOUTHCOM during week 42

- ◆ Influenza activity was minimal in Honduras for week 42.

Description:

Maps, figures and tables are stratified by Combatant Commands (CCMD). The map provides a measure of influenza activity by state or country within each CCMD for the past two weeks for service members. Influenza activity is defined by the percentage of outpatient visits associated with an Influenza-like Illness (ILI) for each week compared to baseline levels of influenza activity. Additionally, a pie graph by US region or country is generated to display the distribution of influenza types and subtype identified from positive laboratory tests for the past two weeks combined.

Influenza activity: Percentage of Outpatient Visits Associated with ILI:

The percentage of all outpatient visits for ILI is calculated each week for all service members, regardless of component. These data are presented as a map of the past two weeks' activity and a figure to display the entire season's data compared to the two prior seasons and baseline. For the map, the activity level compares the mean reported percent of visits due to ILI for the past two weeks to the mean reported percent of visits due to ILI during baseline weeks. Baseline weeks are defined as non-influenza weeks (weeks 22-39) over the past 3 years.

There are four activity levels reported on each map. The activity level corresponds to the number of standard deviations (SD) below, at or above the mean for the current week compared to the mean of the baseline weeks. Activity levels are classified as minimal, low, moderate, and high. Minimal activity corresponds to an influenza percentage that is less than 2 SD above the mean. Low activity corresponds to an influenza percentage that is equal to or greater than 2 SD above the mean, but less than 4 SD above the mean. Moderate activity corresponds to an influenza percentage that is equal to or greater than 4 SD above the mean, but less than 6 SD above the mean. High activity corresponds to an influenza percentage that is equal to or greater than 6 SD above the mean.

Influenza Positive Specimens:

Lab results from PCR, viral culture, and rapid influenza assays are reported. Although the inclusion of rapid tests may underestimate the weekly and cumulative percent positive estimates due to false negatives, visibility of the positive rapid results provides valuable information for this surveillance report. Influenza types/subtypes are categorized as influenza A not subtyped (A subtype na), influenza A/H1 (A H1), influenza A/H3 (A H3), influenza A and B co-infection (A B), and influenza B (B).

Map: Each US region or country with available data contains a pie chart that displays the distribution of influenza types and subtypes for that area for the past two weeks combined. Two weeks of data are combined instead of using just the current week's data due to delays in reporting of laboratory results.

Figure and Table: Each week, using the total number of influenza laboratory tests performed and the positive test results, the proportions positive for each serotype of influenza are calculated for service members and dependents separately.

Data Sources and Case Definitions:

Medical encounter and demographic data from the Armed Forces Health Surveillance Branch's (AFHSB) Defense Medical Surveillance System (DMSS) are used to generate this report. In addition, health-level 7 (HL-7) format laboratory data is provided by the Navy and Marine Corps Public Health Center (NMCPHC) EpiData Center Division. For the past seasons and baseline calculations, ICD-9 codes from outpatient encounters are used to identify influenza activity. The outcome of influenza activity based on ICD-9 codes is defined using the combined codes for ILI (79.99, 382.9, 460, 461.9, 465.8, 465.9, 466.0, 486, 487.0, 487.1, 487.8, 488, 490, 780.6, or 786.2). For the current season, ICD-10 codes from outpatient encounters are used to identify influenza activity. The outcome of influenza activity based on ICD-10 codes is defined using the combined codes for ILI (B97.89, H66.9, H66.90, H66.91, H66.92, H66.93, J00, J01.9, J01.90, J06.9, J09, J09.X, J09.X1, J09.X2, J09.X3, J09.X9, J10, J10.0, J10.00, J10.01, J10.08, J10.1, J10.2, J10.8, J10.81, J10.82, J10.83, J10.89, J11, J11.0, J11.00, J11.08, J11.1, J11.2, J11.8, J11.81, J11.82, J11.83, J11.89, J12.89, J12.9, J18, J18.1, J18.8, J18.9, J20.9, J40, R05, R50.9). An individual can only be counted as a case once per week.

NORTHCOM Regions:

The regions on the NORTHCOM map (bold, black outlines) are defined using the four US Census regions, with the exception of Hawaii and Guam which are a part of PACOM. *Northeast:* Connecticut, Maine, Massachusetts, New Hampshire, Rhode Island, Vermont, New Jersey, New York, Pennsylvania, Puerto Rico, and the U.S. Virgin Islands. *South:* Delaware, the District of Columbia, Maryland, Virginia, West Virginia, Alabama, Florida, Georgia, Kentucky, Mississippi, North Carolina, South Carolina, Tennessee, Arkansas, Louisiana, Texas, and Oklahoma. *Midwest:* Illinois, Indiana, Michigan, Minnesota, Ohio, Wisconsin, Iowa, Kansas, Missouri, Nebraska, North Dakota, and South Dakota. *West:* New Mexico, Colorado, Montana, Utah, Wyoming, Arizona, California, Nevada, Alaska, Idaho, Oregon, and Washington.

(All data are preliminary and subject to change as updated data is received)