

# Deployment Health Assessments

U.S. Armed Forces

November 2018

(Data through October 2018)

Armed Forces Health Surveillance Branch

# Update: Deployment Health Assessments, U.S. Armed Forces, November 2018

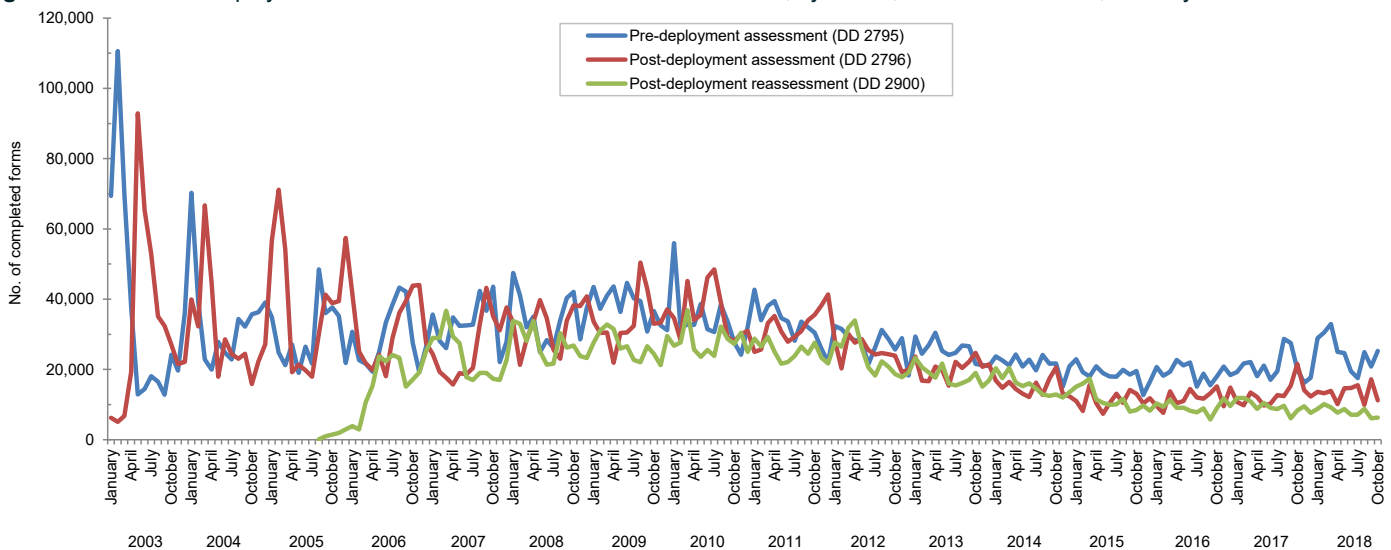
Since January 2003, pronounced fluctuations in the monthly numbers of pre- and post-deployment health assessment (PDHA) forms transmitted to the Armed Forces Health Surveillance Branch (AFHSB) generally have corresponded to times of departure and return of large numbers of service members who deployed. Between April 2006 and October 2018, the number of post-deployment health reassessment (PDHRA) forms per month ranged from 5,725 to 36,863 (Figure 1). For the most recent 12-month period (November 2017–October 2018), the average monthly number of PDHRA forms (8,083) was the single lowest 1-year average since July 2006 (Table 1, data not shown). For the purposes of this report about service members' responses to the assessment questions, it is important to note that the denominator is the total number of service members who completed deployment-related assessments, not the total number of service members eligible for the assessments.

During the past 12 months, the percentages of total returned deployers who rated their health as either "fair" or "poor" ranged from 6.9% to 8.7% on PDHA questionnaires and from 6.0% to 8.9% on PDHRA questionnaires (Figure 2). The percentages of total service members who rated their health as either "fair" or "poor" on pre-deployment questionnaires during this period varied between 3.1% and 4.8%.

In general, the percentages of "health concerns" and "exposure concerns" self-reported on PDHA and PDHRA forms were higher among reserve component members than among active component members (Table 2, Figure 3). Service members in the active component of the Navy and Marine Corps, respectively, were 2 times and 1.5 times as likely to report two or more PTSD symptoms 3–6 months after deployment, compared to the time of their return from deployment. Reserve component Marine Corps members were 1.7 times as likely to report two or more PTSD symptoms at the time of the PDHRA compared to the time of the PDHA (Table 2).

At the time of return from deployment, 17.4% of active component and 14.6% of reserve component service members reported any depression symptoms. Service members in the active and reserve components were more than 4 and 9 times as likely, respectively, to receive a mental health referral at the time of the PDHRA, compared to the time of return from deployment. Moreover, at the time of the PDHRA, reservists were more than twice as likely to receive a mental health referral as members of the active component (Table 2).

**Figure 1.** Numbers of deployment health assessment and reassessment forms, by month, U.S. Armed Forces, January 2003–October 2018

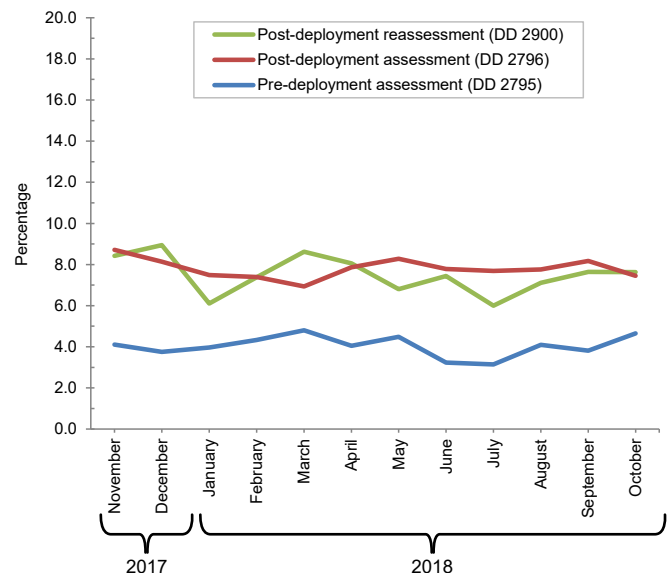


**Table 1.** Number of deployment-related health assessment forms, by month, U.S. Armed Forces, November 2017–October 2018

	Pre-deployment assessment DD 2795		Post-deployment assessment DD 2796		Post-deployment reassessment DD 2900	
	No.	%	No.	%	No.	%
Total	283,784	100.0	160,300	100.0	96,992	100.0
Average	23,649	.	13,358	.	8,083	.
<b>2017</b>						
November	16,185	5.7	14,079	8.8	9,513	9.8
December	17,692	6.2	12,298	7.7	7,608	7.8
<b>2018</b>						
January	28,926	10.2	13,654	8.5	8,775	9.0
February	30,490	10.7	13,192	8.2	10,099	10.4
March	32,911	11.6	13,865	8.6	9,196	9.5
April	24,977	8.8	10,154	6.3	7,701	7.9
May	24,632	8.7	14,608	9.1	8,738	9.0
June	19,455	6.9	14,687	9.2	7,106	7.3
July	17,530	6.2	15,506	9.7	7,072	7.3
August	24,951	8.8	9,905	6.2	8,774	9.0
September	20,797	7.3	17,181	10.7	6,114	6.3
October	25,238	8.9	11,171	7.0	6,296	6.5

Source: Defense Medical Surveillance System (DMSS) as of 07-NOV-2018  
Prepared by Armed Forces Health Surveillance Branch (AFHSB)

**Figure 2.** Percentages of deployment health assessment forms with self-assessed health status rated as either "fair" or "poor," by month, U.S. Armed Forces, November 2017–October 2018



**Table 2.** Percentage of service members who endorsed selected questions or received referrals on health assessment forms, U.S. Armed Forces, November 2017–October 2018

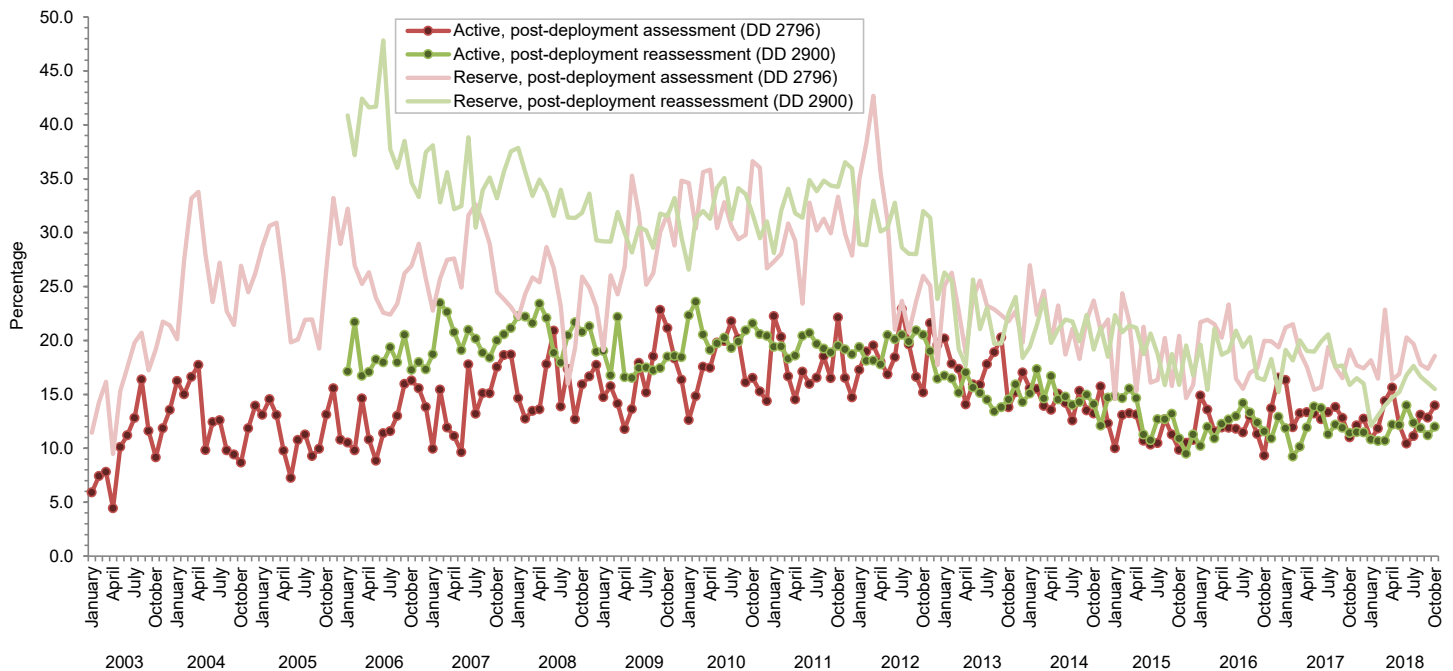
	Army			Navy			Air Force			Marine Corps			All active component service members		
	Pre-deploy DD2795	Post-deploy DD2796	Reassessmt DD2900	Pre-deploy DD2795	Post-deploy DD2796	Reassessmt DD2900	Pre-deploy DD2795	Post-deploy DD2796	Reassessmt DD2900	Pre-deploy DD2795	Post-deploy DD2796	Reassessmt DD2900	Pre-deploy DD2795	Post-deploy DD2796	Reassessmt DD2900
	n=	n=	n=	n=	n=	n=	n=	n=	n=	n=	n=	n=	n=	n=	n=
<b>Active component</b>	119,997	59,464	30,806	6,122	4,659	5,105	37,882	33,367	30,283	20,279	9,851	9,109	184,280	107,341	75,303
	%	%	%	%	%	%	%	%	%	%	%	%	%	%	%
General health "fair" or "poor"	6.1	9.8	10.9	2.0	5.3	7.8	1.5	3.7	3.4	2.6	6.8	8.3	4.6	7.4	7.3
Health concerns, not wound or injury	6.4	16.7	13.0	5.2	14.9	12.2	3.2	10.0	7.5	4.0	12.6	8.7	5.4	14.2	10.2
Health worse now than before deployed	na	72.6	74.9	na	70.1	74.7	na	63.0	70.5	na	69.5	76.8	na	69.2	73.3
Exposure concerns	na	11.2	12.5	na	22.0	22.3	na	14.0	8.5	na	14.0	13.6	na	12.8	11.7
PTSD symptoms (two or more)	na	5.9	7.5	na	4.9	9.8	na	2.2	2.6	na	3.3	4.9	na	4.5	5.4
Depression symptoms (any)	na	21.9	21.7	na	18.0	22.3	na	9.3	9.0	na	17.7	18.4	na	17.4	16.2
Referral indicated by provider (any)	6.2	16.7	13.3	7.7	30.5	21.6	7.1	14.4	9.5	4.3	23.0	16.3	6.2	17.2	12.7
Mental health referral indicated <sup>a</sup>	1.9	2.9	11.3	1.0	5.3	18.0	1.1	1.8	8.4	0.6	2.6	14.3	1.5	2.6	11.0
Medical visit following referral <sup>b</sup>	91.5	96.3	91.3	87.2	92.2	85.4	94.7	97.8	97.4	90.1	91.2	89.5	92.0	95.7	91.8
	Army			Navy			Air Force			Marine Corps			All reserve component service members		
	Pre-deploy DD2795	Post-deploy DD2796	Reassessmt DD2900	Pre-deploy DD2795	Post-deploy DD2796	Reassessmt DD2900	Pre-deploy DD2795	Post-deploy DD2796	Reassessmt DD2900	Pre-deploy DD2795	Post-deploy DD2796	Reassessmt DD2900	Pre-deploy DD2795	Post-deploy DD2796	Reassessmt DD2900
	n=	n=	n=	n=	n=	n=	n=	n=	n=	n=	n=	n=	n=	n=	n=
<b>Reserve component</b>	40,756	25,182	6,776	2,800	2,448	2,421	15,693	14,557	11,263	2,180	934	484	61,429	43,121	20,944
	%	%	%	%	%	%	%	%	%	%	%	%	%	%	%
General health "fair" or "poor"	2.6	10.2	13.1	0.4	9.8	9.5	1.0	4.5	4.0	1.7	7.7	6.4	2.1	8.2	7.6
Health concerns, not wound or injury	4.2	20.1	18.7	1.7	34.9	11.5	1.9	9.6	4.6	3.1	16.1	7.6	3.4	17.3	10.0
Health worse now than before deployed	na	70.6	76.5	na	71.0	75.8	na	67.7	72.0	na	75.2	76.0	na	69.8	74.0
Exposure concerns	na	18.3	19.1	na	37.1	34.9	na	15.4	8.9	na	15.4	17.8	na	18.3	15.4
PTSD symptoms (two or more)	na	6.2	10.2	na	5.9	8.9	na	1.8	1.8	na	4.8	8.1	na	4.7	5.5
Depression symptoms (any)	na	17.9	20.8	na	19.0	22.1	na	7.8	6.7	na	19.0	16.5	na	14.6	13.2
Referral indicated by provider (any)	4.5	23.9	32.1	3.9	30.7	34.8	4.2	14.3	17.6	6.6	42.0	25.0	4.5	21.4	24.5
Mental health referral indicated <sup>a</sup>	1.1	3.0	29.6	0.5	2.7	34.4	0.6	1.3	17.1	1.4	3.2	24.0	1.0	2.4	23.3
Medical visit following referral <sup>b</sup>	80.5	97.6	45.4	95.2	94.6	59.9	81.5	80.9	72.7	91.8	92.3	58.5	81.8	93.4	56.0

PTSD, post-traumatic stress disorder

<sup>a</sup>Includes behavioral health, combat stress and substance abuse referrals.

<sup>b</sup>Record of inpatient or outpatient visit within 6 months after referral.

**Figure 3.** Percentages of service members with completed assessments who endorsed exposure concerns on post-deployment health assessments or reassessments, by component, by month, U.S. Armed Forces, January 2003–October 2018



Data Source: Defense Medical Surveillance System