



# DEPARTMENT OF DEFENSE (AFHSB)

## Seasonal Influenza Surveillance Summary

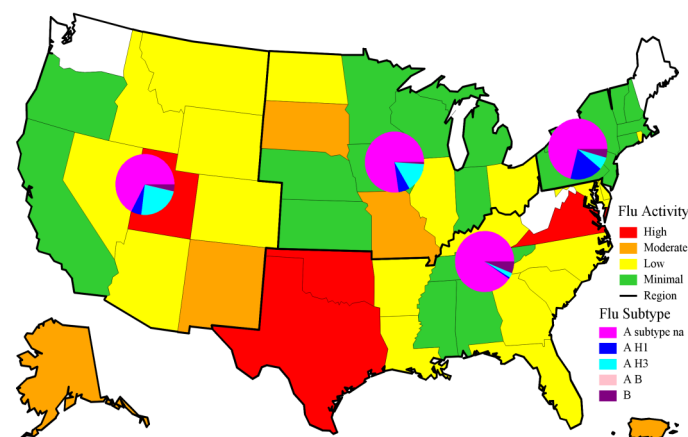
### Northern Command -- Week 11 (10 March 2019 — 16 March 2019)



In NORTHCOM during week 11

- ◆ Influenza activity decreased in several states and ranged from minimal to high depending on the state. Activity remained high in Utah, Texas, Oklahoma, and Virginia.
- ◆ The percentage of outpatient visits due to ILI decreased, but remained above baseline and previous seasons.
- ◆ The percentage of positive lab tests remained high at 26.4% for service members and 30.8% for other beneficiaries.
- ◆ Among typed influenza A specimens, influenza A/H3N2 has become the predominate subtype; although service members in the Northeast continued to have a higher percentage of A/H1N1.
- ◆ Six influenza hospitalizations (RMEs) were reported among other beneficiaries. (Season totals: 38 Service members and 206 other beneficiaries)

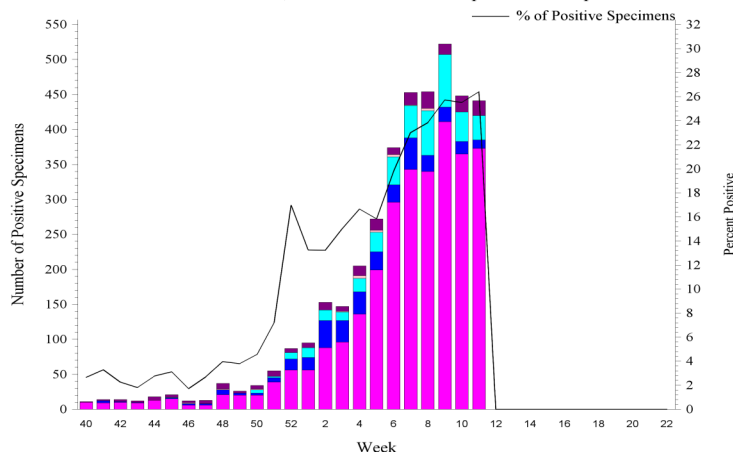
NORTHCOM Service Members, Influenza Activity and Virus Subtype, During the Last 2 Weeks



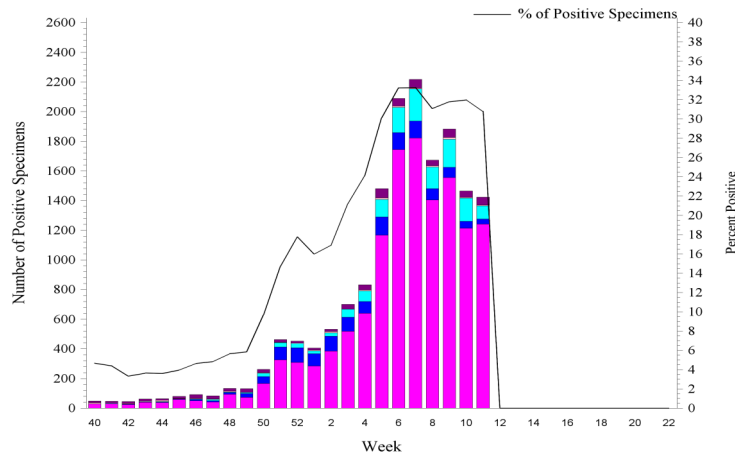
2018 – 2019 NORTHCOM Season Totals

	A/H1N1	A/H3N2	A/Untyped	Flu B	AB	Overall % Positive
Service Members	335	407	2937	221	18	15.51
Dependents	1239	1362	13256	691	115	21.81

NORTHCOM Service Members, Influenza Positive Specimens Reported to AFHSB

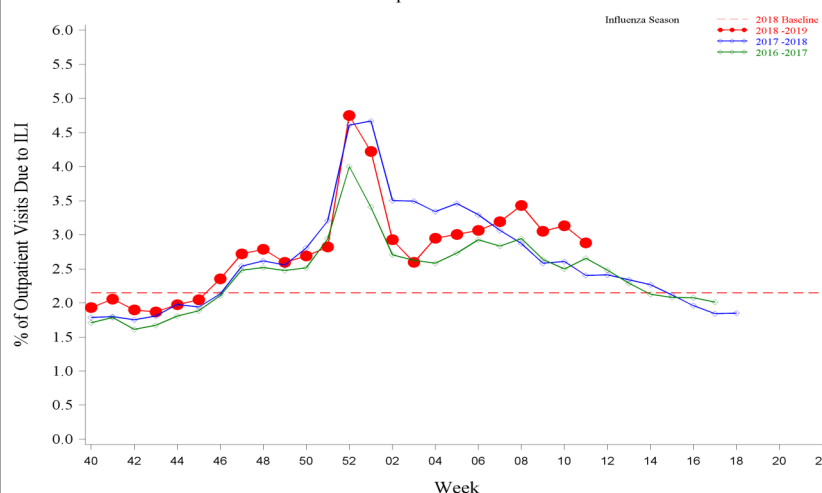


NORTHCOM Beneficiaries, Influenza Positive Specimens Reported to AFHSB



Disclaimer: Medical data from Military Treatment Facilities that are using MHS GENESIS are not available in DMSS. This includes Naval Hospital Oak Harbor, Naval Hospital Bremerton, Air Force Medical Services Fairchild, and Madigan Army Medical Center. Therefore, individuals who are expected to seek care at one of these facilities are currently being removed from the study population as we will not capture their medical encounters.

NORTHCOM Service Members, 2018-2019 and Previous 2 Influenza Seasons ILI Outpatient Visits



For inquiries or comments please contact [dha.ncr.health-surv.list.ib-alert-response@mail.mil](mailto:dha.ncr.health-surv.list.ib-alert-response@mail.mil)

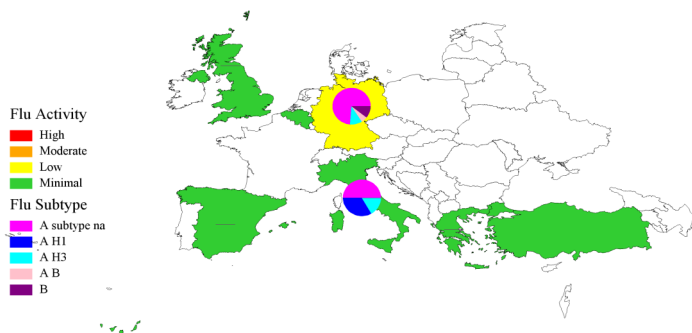


## European Command -- Week 11

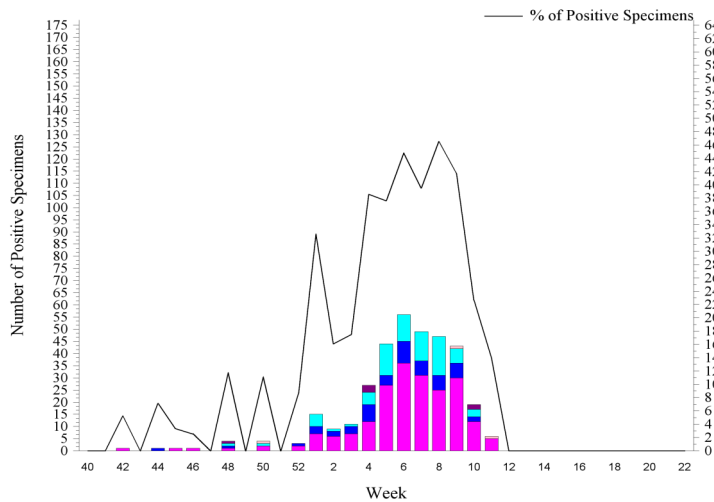
## In EUCOM during week 11

- ◆ Influenza activity remained minimal across EUCOM, with the exception of Germany which had low activity.
- ◆ The percentage of outpatient visits due to ILI continued to decrease and was below baseline and similar to the 2016-17 season.
- ◆ The percentage of positive lab tests decreased to 14.0% for service members and increased to 46.2% for other beneficiaries.
- ◆ Among typed influenza A specimens, A/H3N2 remained the predominate subtype.
- ◆ Four influenza hospitalizations (RMEs) among a service member (1) and other beneficiaries (3) were reported. (Season totals: 13 Service members and 34 other beneficiaries)

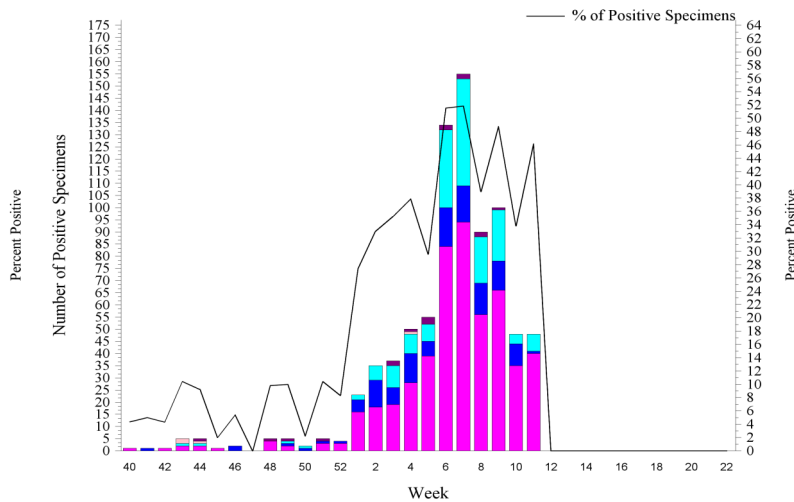
## EUCOM Service Members, Influenza Activity and Virus Subtype, During the Last 2 Weeks



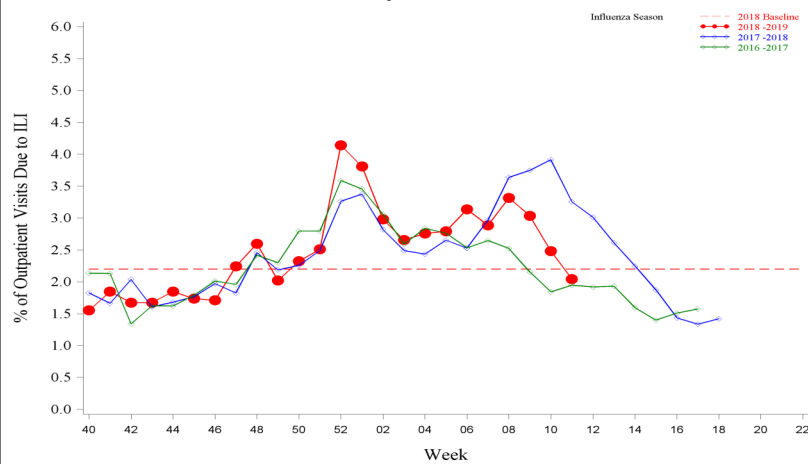
## EUCOM Service Members, Influenza Positive Specimens Reported to AFHSB



## EUCOM Beneficiaries, Influenza Positive Specimens Reported to AFHSB



## EUCOM Service Members, 2018-2019 and Previous 2 Influenza Seasons

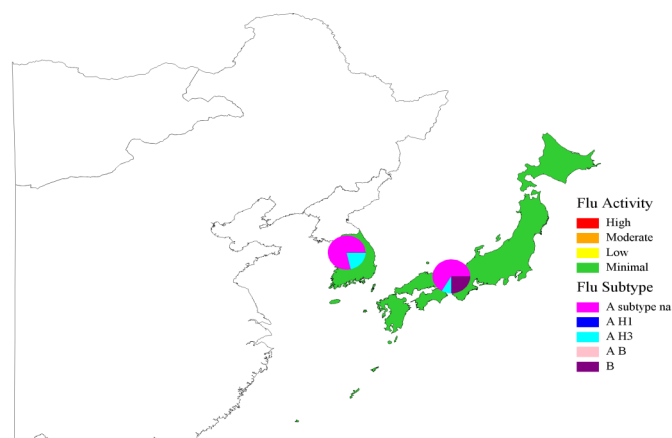


## 2018-2019 EUCOM Season Totals

	A/H1N1	A/H3N2	A/Untyped	Influenza B	AB	Overall % Positive
Service Members	51	75	206	6	3	26.52
Dependents	114	163	514	17	4	33.25

**Indo-Pacific Command -- Week 11****In PACOM during week 11**

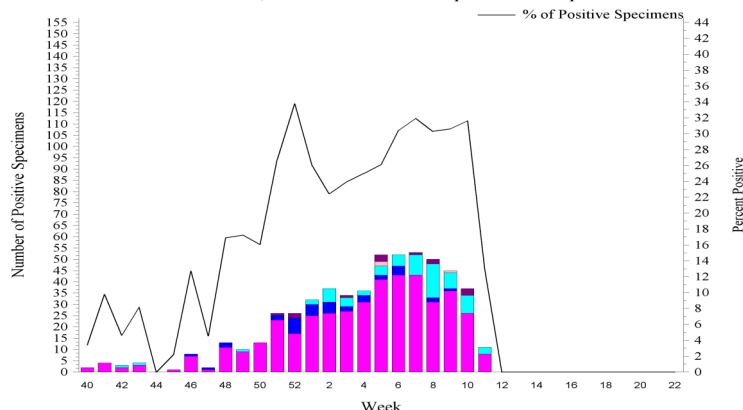
- ◆ Influenza activity was minimal across EUCOM, except for Hawaii which had low activity.
- ◆ The percentage of outpatient visits due to ILI continued to decrease and was below baseline and previous seasons.
- ◆ The percentage of positive lab tests decreased to 12.9% for service members and increased to 24.45% for other beneficiaries.
- ◆ Among typed influenza A specimens, A/H3N2 continued to predominate.
- ◆ No influenza hospitalizations (RMEs) were reported.  
(Season totals: 3 Service member and 15 other beneficiaries)

PACOM Service Members, Influenza Activity and Virus Subtype, During the Last 2 Weeks  
South Korea and Japan**PACOM: Guam and Hawaii Influenza Activity and HL7 Test Positive (MAP: SM+BN, 2 wks)**

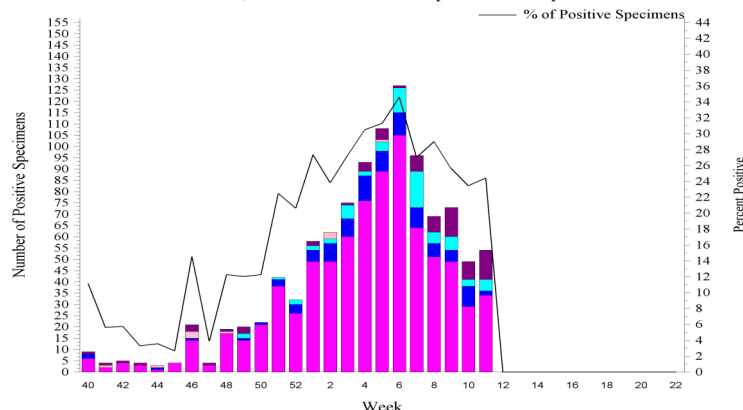
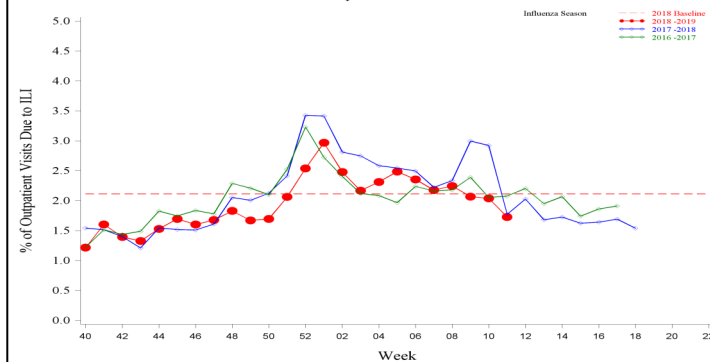
Area Name	Influenza Activity	HL7 Type				
		A(H1)	A(H3)	A Untyped	B	AB
<b>Guam</b>	Minimal	0	0	2	8	0
<b>Hawaii*</b>	Low	10	10	21	2	0

\*Hawaii HL7 Type counts may include samples received from Guam, but tested in Hawaii

PACOM Service Members, Influenza Positive Specimens Reported to AFHSB



PACOM Beneficiaries, Influenza Positive Specimens Reported to AFHSB

**PACOM Service Members, 2018-2019 and Previous 2 Influenza Seasons**  
ILI Outpatient Visits**2018-2019 PACOM Season Totals**

	A/H1N1	A/H3N2	A/Untyped	Flu B	Flu AB	Overall % Positive
Service Members	37	68	430	13	3	22.56
Dependents	95	67	808	73	10	22.15

For inquiries or comments please contact [dha.ncr.health-surv.list.ib-alert-response@mail.mil](mailto:dha.ncr.health-surv.list.ib-alert-response@mail.mil)

**Central and Africa Command -- Week 11**

In CENTCOM and AFRICOM during week 11

- ◆ Data for CENTCOM and AFRICOM are not presented this week due to continued delays in receiving the TMDS data.
- ◆ No influenza hospitalizations (RMEs) were reported for week 11. (Season totals: 0 Service members)

**Southern Command -- Week 11**

In SOUTHCOM during week 11:

- ◆ Data for SOUTHCOM are not presented this week due to continued delays in receiving the TMDS data.

2018-2019 Cuba Season Totals						
	A/H1N1	A/H3N2	A/Untyped	Flu B	Flu AB	Total Tested
Service Members	0	0	0	0	0	15
Dependents	0	0	2	1	0	17

For inquiries or comments please contact [dha.ncr.health-surv.list.ib-alert-response@mail.mil](mailto:dha.ncr.health-surv.list.ib-alert-response@mail.mil)

## Description:

Maps, figures and tables are stratified by Combatant Commands (CCMD). The map provides a measure of influenza activity by state or country within each CCMD for the past two weeks for service members. Influenza activity is defined by the percentage of outpatient visits associated with an Influenza-like Illness (ILI) for each week compared to baseline levels of influenza activity. Additionally, a pie graph by US region or country is generated to display the distribution of influenza types and subtype identified from positive laboratory tests for the past two weeks combined.

## Influenza activity: Percentage of Outpatient Visits Associated with ILI:

The percentage of all outpatient visits for ILI is calculated each week for all service members, regardless of component. These data are presented as a map of the past two weeks' activity and a figure to display the entire season's data compared to the two prior seasons and baseline. For the map, the activity level compares the mean reported percent of visits due to ILI for the past two weeks to the mean reported percent of visits due to ILI during baseline weeks. Baseline weeks are defined as non-influenza weeks (weeks 22-39) over the past 3 years.

There are four activity levels reported on each map. The activity level corresponds to the number of standard deviations (SD) below, at or above the mean for the current week compared to the mean of the baseline weeks. Activity levels are classified as minimal, low, moderate, and high. Minimal activity corresponds to an influenza percentage that is less than 2 SD above the mean. Low activity corresponds to an influenza percentage that is equal to or greater than 2 SD above the mean, but less than 4 SD above the mean. Moderate activity corresponds to an influenza percentage that is equal to or greater than 4 SD above the mean, but less than 6 SD above the mean. High activity corresponds to an influenza percentage that is equal to or greater than 6 SD above the mean.

## Influenza Positive Specimens:

Lab results from PCR, viral culture, and rapid influenza assays are reported. Although the inclusion of rapid tests may underestimate the weekly and cumulative percent positive estimates due to false negatives, visibility of the positive rapid results provides valuable information for this surveillance report. Influenza types/subtypes are categorized as influenza A not subtyped (A subtype na), influenza A/H1 (A H1), influenza A/H3 (A H3), influenza A and B co-infection (A B), and influenza B (B).

Map: Each US region or country with available data contains a pie chart that displays the distribution of influenza types and subtypes for that area for the past two weeks combined. Two weeks of data are combined instead of using just the current week's data due to delays in reporting of laboratory results.

Figure and Table: Each week, using the total number of influenza laboratory tests performed and the positive test results, the proportions positive for each serotype of influenza are calculated for service members and dependents separately.

## Data Sources and Case Definitions:

Medical encounter and demographic data from the Armed Forces Health Surveillance Branch's (AFHSB) Defense Medical Surveillance System (DMSS) are used to generate this report. In addition, health-level 7 (HL-7) format laboratory data is provided by the Navy and Marine Corps Public Health Center (NMCPHC) EpiData Center Division. For the past seasons and baseline calculations, ICD-9 codes from outpatient encounters are used to identify influenza activity. The outcome of influenza activity based on ICD-9 codes is defined using the combined codes for ILI (79.99, 382.9, 460, 461.9, 465.8, 465.9, 466.0, 486, 487.0, 487.1, 487.8, 488, 490, 780.6, or 786.2). For the current season, ICD-10 codes from outpatient encounters are used to identify influenza activity. The outcome of influenza activity based on ICD-10 codes is defined using the combined codes for ILI (B97.89, H66.9, H66.90, H66.91, H66.92, H66.93, J00, J01.9, J01.90, J06.9, J09, J09.X, J09.X1, J09.X2, J09.X3, J09.X9, J10, J10.0, J10.00, J10.01, J10.08, J10.1, J10.2, J10.8, J10.81, J10.82, J10.83, J10.89, J11, J11.0, J11.00, J11.08, J11.1, J11.2, J11.8, J11.81, J11.82, J11.83, J11.89, J12.89, J12.9, J18, J18.1, J18.8, J18.9, J20.9, J40, R05, R50.9). An individual can only be counted as a case once per week.

## NORTHCOM Regions:

The regions on the NORTHCOM map (bold, black outlines) are defined using the four US Census regions, with the exception of Hawaii and Guam which are a part of PACOM. *Northeast:* Connecticut, Maine, Massachusetts, New Hampshire, Rhode Island, Vermont, New Jersey, New York, Pennsylvania, Puerto Rico, and the U.S. Virgin Islands. *South:* Delaware, the District of Columbia, Maryland, Virginia, West Virginia, Alabama, Florida, Georgia, Kentucky, Mississippi, North Carolina, South Carolina, Tennessee, Arkansas, Louisiana, Texas, and Oklahoma. *Midwest:* Illinois, Indiana, Michigan, Minnesota, Ohio, Wisconsin, Iowa, Kansas, Missouri, Nebraska, North Dakota, and South Dakota. *West:* New Mexico, Colorado, Montana, Utah, Wyoming, Arizona, California, Nevada, Alaska, Idaho, Oregon, and Washington.

**(All data are preliminary and subject to change as updated data is received)**