

DoD Consolidated Influenza Surveillance Report

Week 01 (29 December 2019— 04 January 2020)



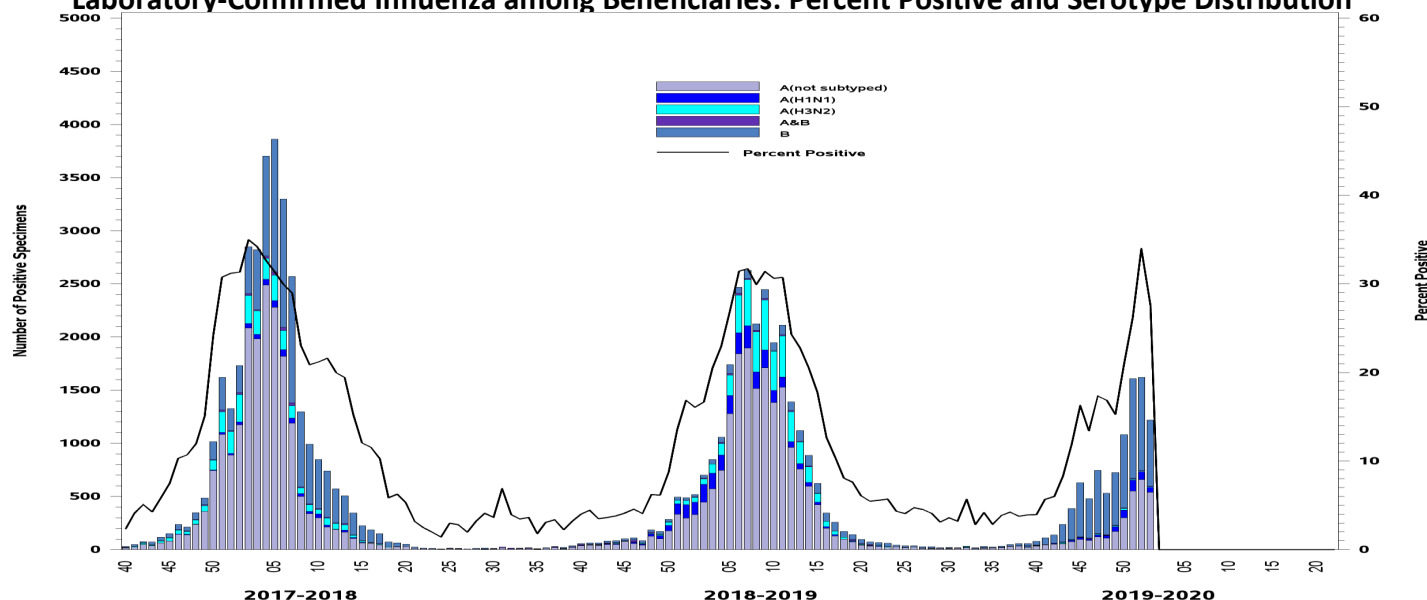
One Page Summary: Weekly Highlights

- Counts of laboratory-confirmed influenza cases and dispensed antiviral prescriptions among all beneficiaries decreased from the prior week and were within normal levels, but were still elevated above the threshold and baseline.
- Among active component Service Members laboratory-confirmed influenza cases increased and were above the threshold; Influenza-like illness (ILI) activity increased to high.
- Thirty-nine installations (an increase of 30 from the prior week) had high ILI activity.
- The majority of laboratory-confirmed influenza cases continued to be type B in NORTHCOM and type A in all other combatant commands with data.
- Fourteen new laboratory-confirmed influenza hospitalizations were reported for week 01 (Season total: 69).

Influenza Surveillance Indicators (2019-2020 season)

All Beneficiaries	Total Per Week		Trend	Activity Level
Laboratory Cases	1221		◀▶	Normal
Dispensed Antivirals	1493		▼	Normal
Severity			Activity Level	
Inpatient Laboratory Cases	14		◀▶	Low
Inpatient Dispensed Antivirals	71		◀▶	Normal
Active Component			Activity Level	
Laboratory Cases	261		◀▶	Normal
Dispensed Antivirals	269		◀▶	Low
ILI Outpatient Visits	4%		◀▶	High

Laboratory-Confirmed Influenza among Beneficiaries: Percent Positive and Serotype Distribution

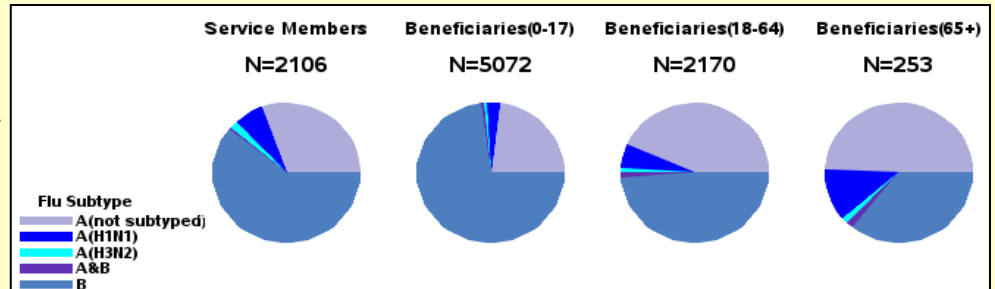


Disclaimer: Due to the transition to MHS GENESIS, data are not available from NH Oak Harbor, NH Bremerton, AFMS Fairchild, Madigan AMC, Travis AFB, Presidio of Monterey AB, NAS Lemoore, or Mountain Home AFB. Therefore, these sites are not included in this report.

Laboratory-Confirmed Influenza (2019-2020 Season: Week 01)

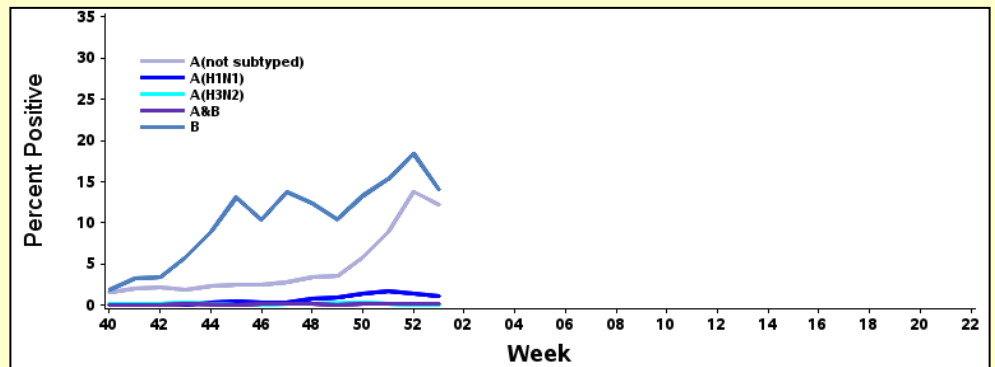
- Children continued to have the highest number of laboratory-confirmed influenza positive specimens at 5,072; Other beneficiaries (18-64 years) now have the second highest count at 2,170.

Number and Distribution of Positive Specimens, by Beneficiary Status and Serotype



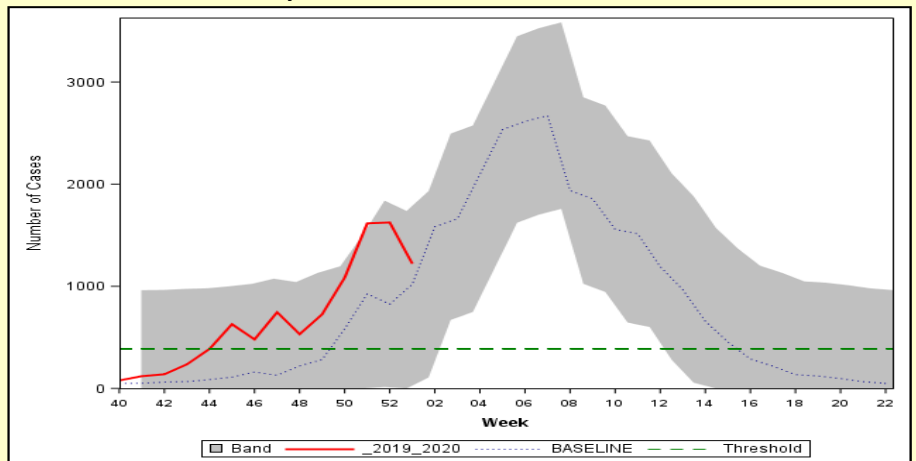
- Overall, during week 01, laboratory-confirmed influenza positive specimens were nearly equally distributed between influenza A and B.

Percent of Specimens Positive for Influenza by Serotype



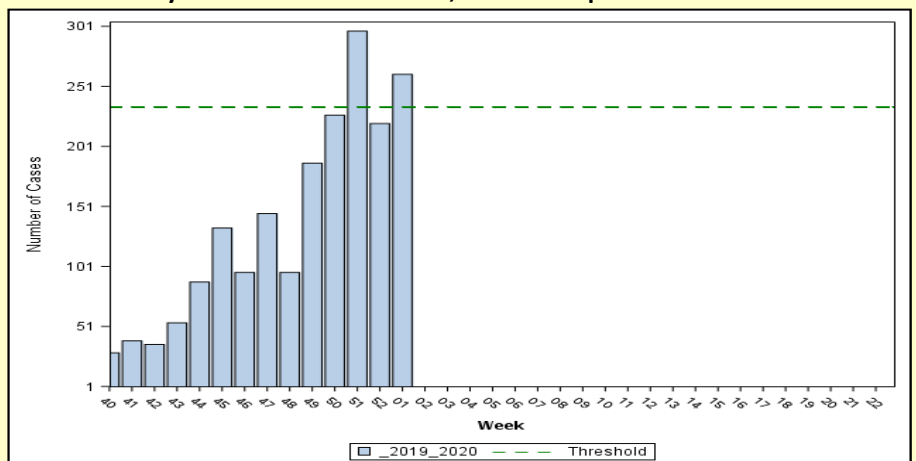
- The number of laboratory-confirmed cases among all beneficiaries decreased, but remained above the threshold and baseline.
- Band indicates one standard deviation above and below seasonal baseline estimates. Threshold indicates two standard deviations above off-season average.

Laboratory-Positive Influenza Cases, All Beneficiaries



- The number of active component Service Member laboratory-confirmed cases increased and went above the threshold for the second time this season.
- Threshold indicates two standard deviations above seasonal baseline estimates.

Laboratory-Positive Influenza Cases, Active Component Service Members

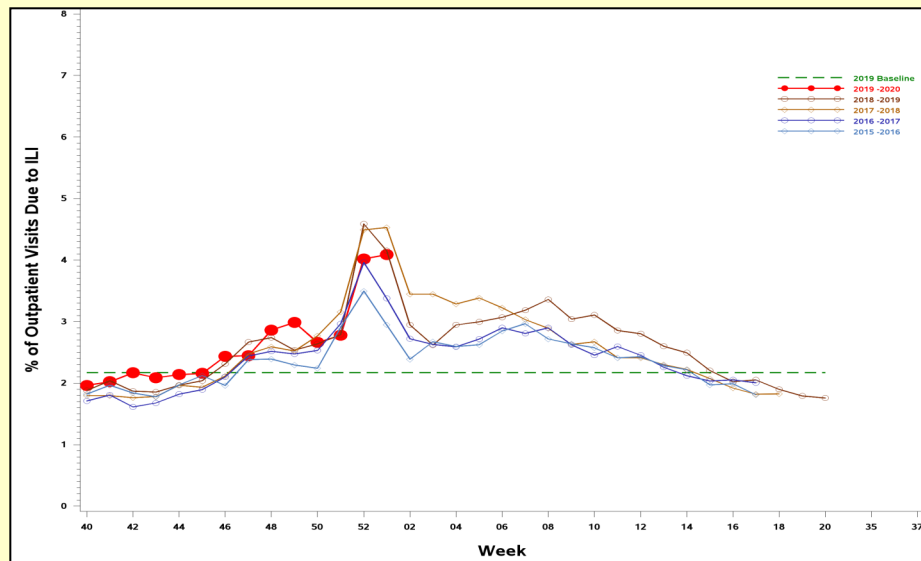


Disclaimer: Due to the transition to MHS GENESIS, data are not available from NH Oak Harbor, NH Bremerton, AFMS Fairchild, Madigan AMC, Travis AFB, Presidio of Monterey AB, NAS Lemoore, or Mountain Home AFB. Therefore, these sites are not included in this report.

ILI and Dispensed Antiviral Prescriptions (2019-2020 Season: Week 01)

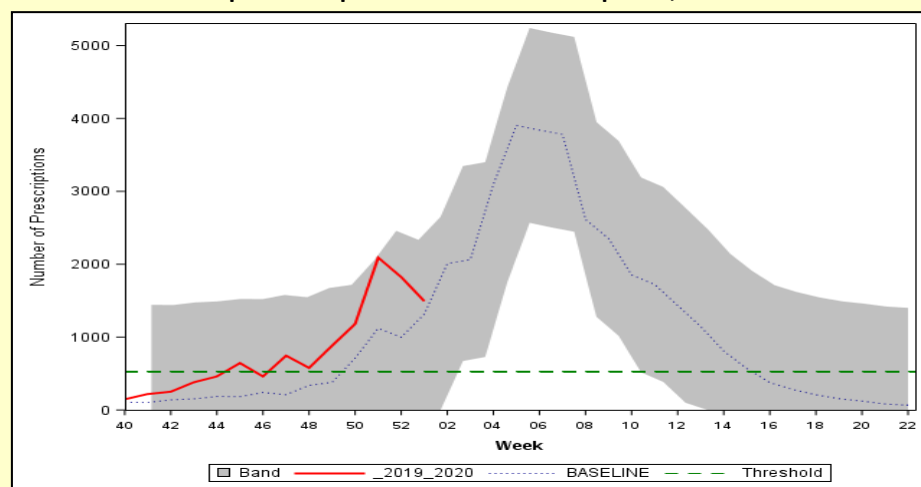
- The percent of outpatient visits due to ILI among Service Members increased and remained above baseline, but similar to previous seasons. This seasonal increase over the holiday weeks is typically a result of less outpatient encounters overall (most likely a decrease of routine care visits) rather than a significant increase in influenza encounters.

Percent of Outpatient Visits Due to ILI:
Service Members, 2015-2016 to 2019-2020 seasons



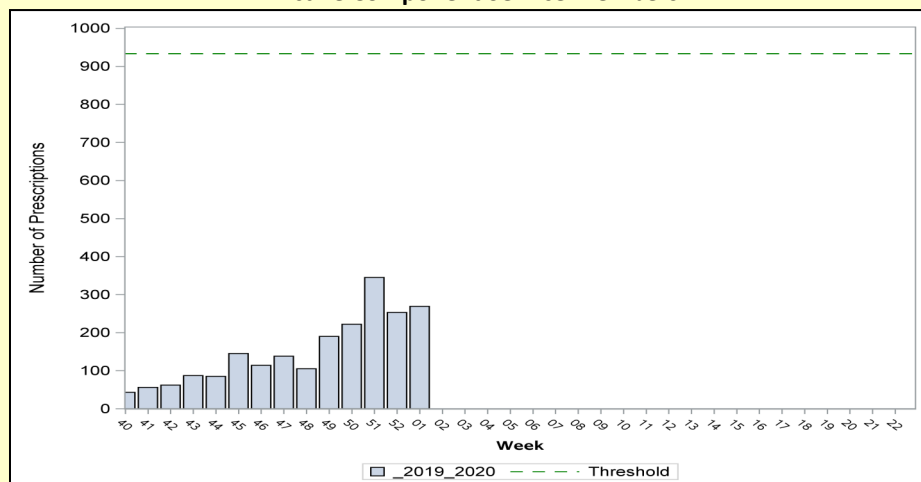
- Dispensed antiviral prescriptions among all beneficiaries continued to decreased, but remained above threshold and baseline.
- Band indicates one standard deviation above and below seasonal baseline estimates. Threshold indicates two standard deviations above off-season average.

Influenza-Specific Dispensed Antiviral Prescriptions, All Beneficiaries



Influenza-Specific Dispensed Antiviral Prescriptions:
Active Component Service Members

- Dispensed antiviral prescriptions among active component Service Members increased slightly.
- Threshold indicates two standard deviation above the overall weighted average during the season.

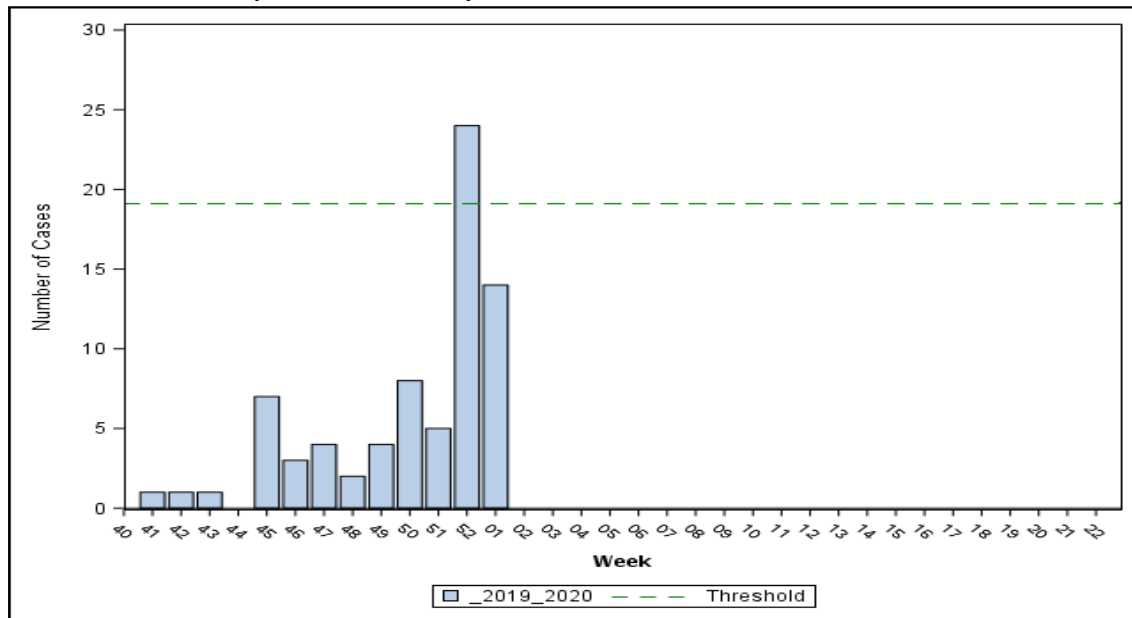


Disclaimer: Due to the transition to MHS GENESIS, data are not available from NH Oak Harbor, NH Bremerton, AFMS Fairchild, Madigan AMC, Travis AFB, Presidio of Monterey AB, NAS Lemoore, or Mountain Home AFB. Therefore, these sites are not included in this report.

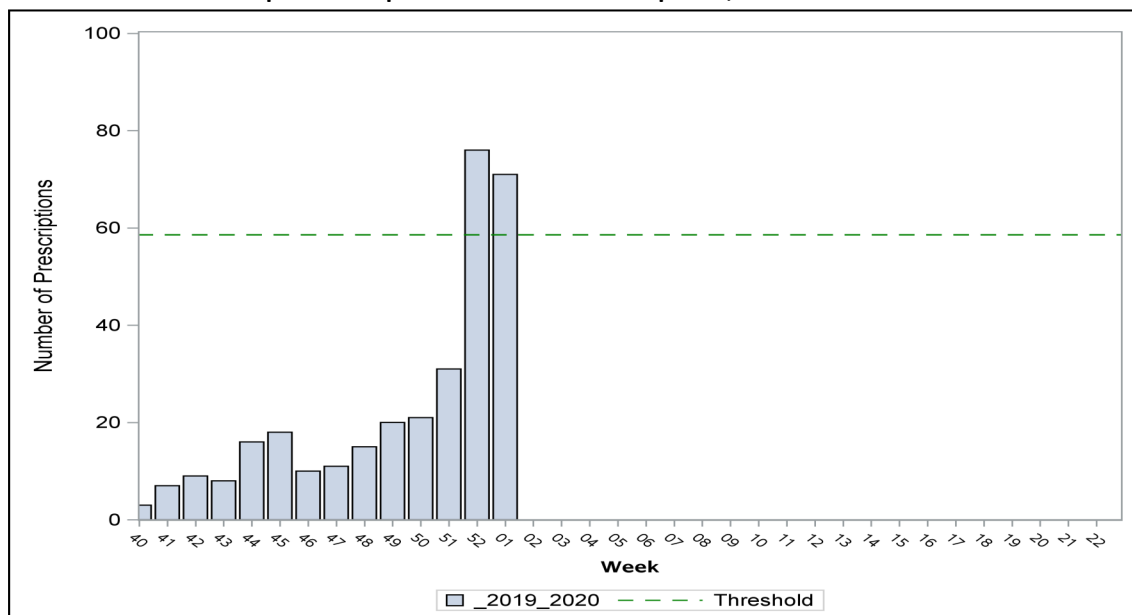
Severity: Hospitalized Influenza Metrics (2019-2020 Season: Week 01)

- Fourteen new laboratory-confirmed influenza hospitalizations were reported (all among other beneficiaries (BN))
 - Three influenza A (H1N1): Ft Bliss (1) , JB San Antonio (2)
 - One influenza A (H3N2): JB San Antonio
 - Five influenza A (not subtyped): Ft Gordon (1), Ft Shafter (2), JB San Antonio (1), and Ft Belvoir (1)
 - Five influenza B: NMC San Diego (3), WRNMMC (1), NMC Portsmouth
- ♦ There have been 69 laboratory-confirmed influenza hospitalizations this season (7 Service Members / 62 BN)
- The number of inpatient dispensed antiviral prescriptions decreased slightly, but remained above the threshold.
- Thresholds indicates one standard deviation above the overall weighted average during the season.

Hospitalized Laboratory-Positive Influenza Cases, All Beneficiaries



Inpatient Dispensed Antivirals Prescriptions, All Beneficiaries



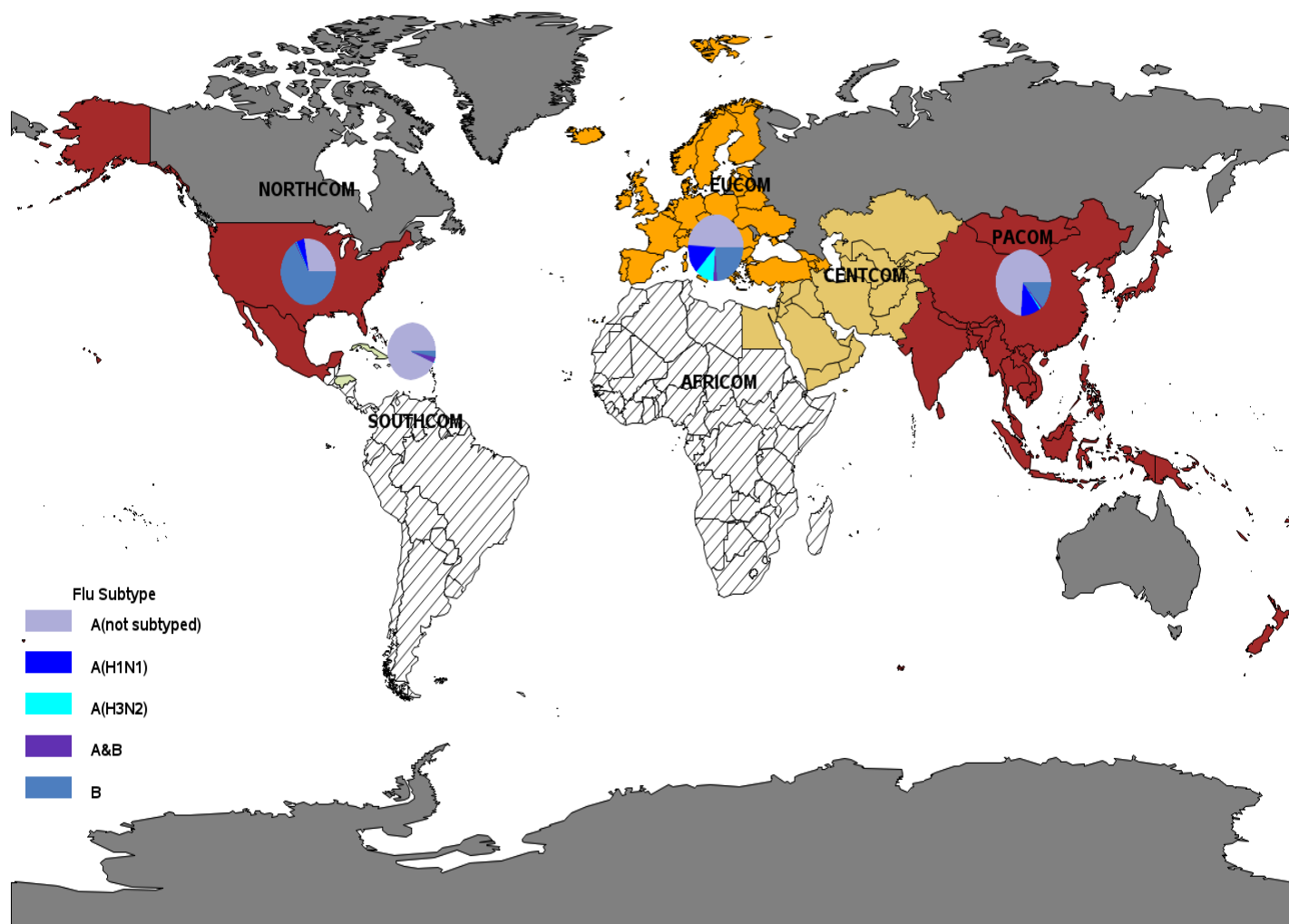
Disclaimer: Due to the transition to MHS GENESIS, data are not available from NH Oak Harbor, NH Bremerton, AFMS Fairchild, Madigan AMC, Travis AFB, Presidio of Monterey AB, NAS Lemoore, or Mountain Home AFB. Therefore, these sites are not included in this report.

Influenza Activity: Geographic Combatant Command

(2019-2020 Season: Week 01)

- **NORTHCOM:** ILI activity increased to high. Over the past 2 weeks, the majority of positive specimens continued to be influenza B.
- **EUCOM:** ILI activity overall increased to moderate, however Spain and Belgium had high activity. Among positive specimens, the majority continue to be influenza A.
- **INDOPACOM:** Overall, ILI activity increased to high. The majority of positive specimens continued to be influenza A. Among subtyped influenza A specimens, the majority were A(H1N1).
- **SOUTHCOM:** ILI activity remained minimal in Cuba. The majority of specimens continued to be influenza A (not subtyped).
- **CENTCOM:** ILI activity was low overall, however Afghanistan continued to have high activity.

ILI Activity (Service Members) and Laboratory-Confirmed Influenza (All Beneficiaries)



ILI Activity, past 2 wks

No Data Available

Minimal

Low

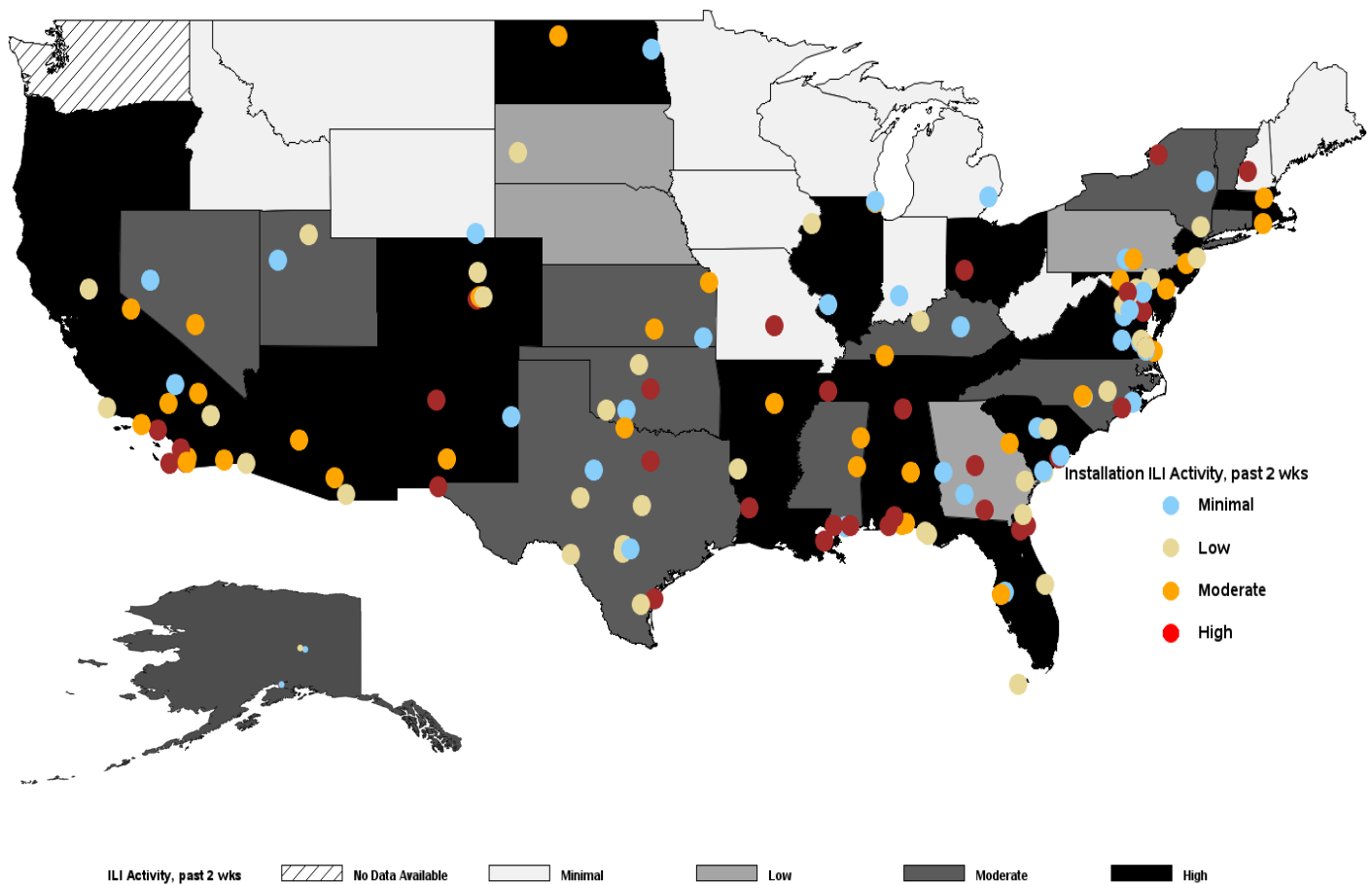
Moderate

High

*Locations colored in dark gray have no Service Member medical encounter data.

Influenza Activity: NORTHCOM (2019-2020 Season: Week 01)

- ILI activity continued to increase at installations. Forty installations had moderate activity and 39 installations had high ILI activity.
- At the state level, the majority of states had moderate to high activity.
- State level data includes both Military Treatment Facility (MTF) and outsourced care. Therefore, state activity levels may differ from the installation level data.
- Installation-level laboratory data can be found on pages 11-13 of the report.

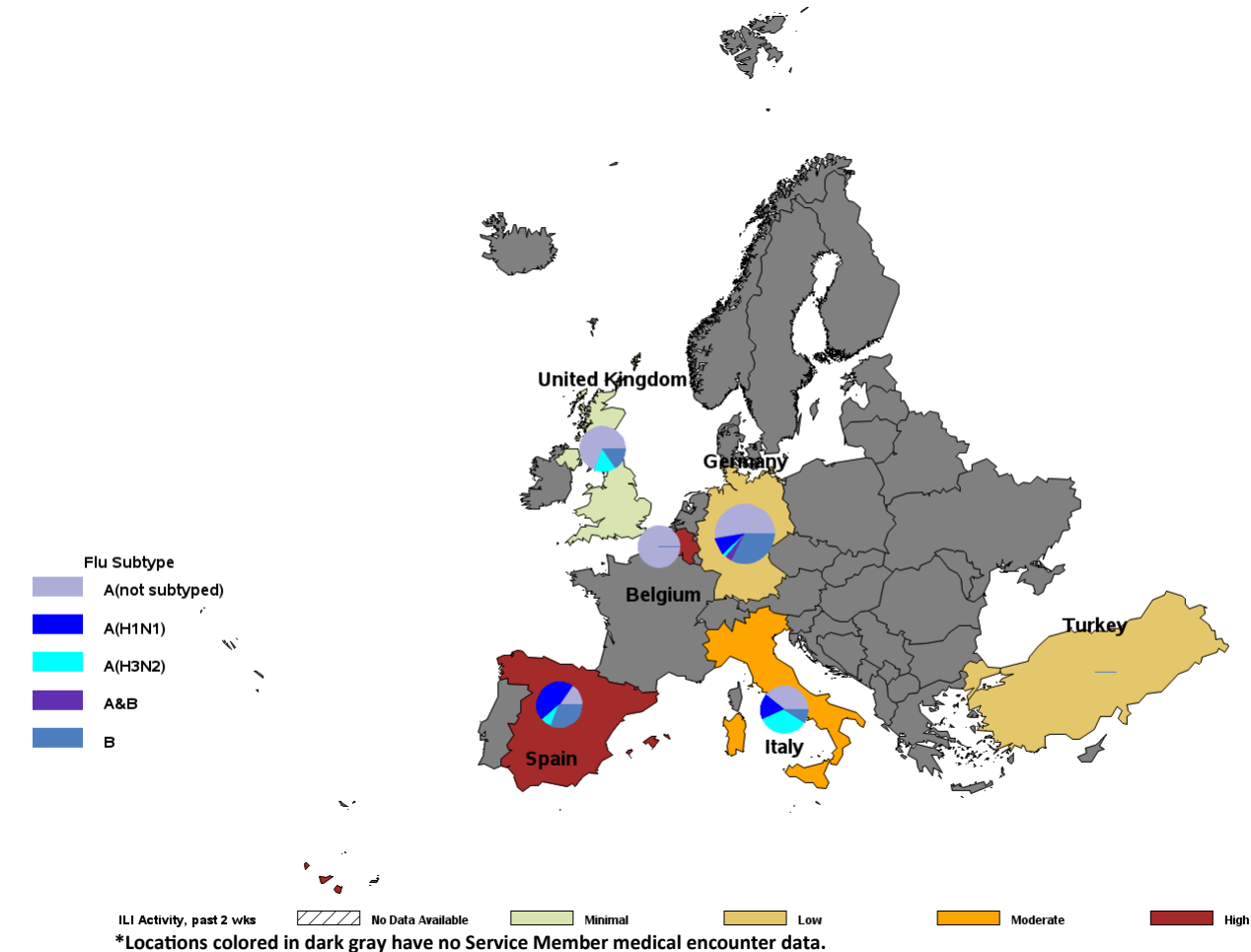


Disclaimer: Due to the transition to MHS GENESIS, data are not available from NH Oak Harbor, NH Bremerton, AFMS Fairchild, Madigan AMC, Travis AFB, Presidio of Monterey AB, NAS Lemoore, or Mountain Home AFB. Therefore, these sites are not included in this report.

Influenza Activity: EUCOM (2019-2020 Season: Week 01)

- ILI activity increased to minimal in Italy and high in Belgium. Activity remained high in Spain and minimal to low in all other EUCOM countries with data.
- The majority of positive specimens in the past 2 weeks were influenza A.

ILI Activity (Service Members) and Laboratory-Confirmed Influenza (All Beneficiaries)

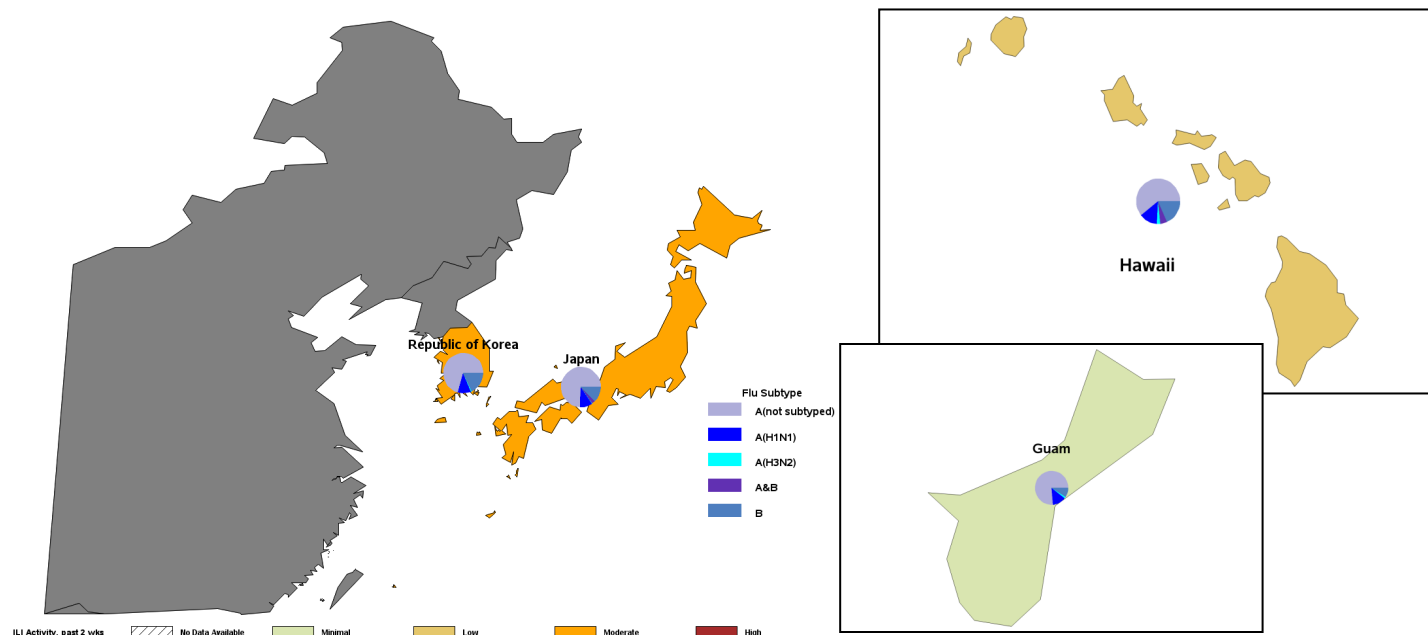


Country	Location	Service	A (not sub-typed)		A (H1N1)		A (H3N2)		A & B		B		Total positive	Total tested	% Positive	Change from last report
			2 wks	Season	2 wks	Season	2 wks	Season	2 wks	Season	2 wks	Season	2 wks	2 wks	2 wks	
Belgium	Shape	A	0	2	0	0	0	0	0	0	0	0	0	1	0	↔
Germany	Barton Barracks	A	0	0	0	0	0	0	0	0	0	0	0	0	0	↔
Germany	Landstuhl RMC	A	5	12	1	2	0	1	0	2	3	8	9	47	19	↑
Germany	Patch Barracks	A	0	0	0	0	0	0	0	0	0	0	0	0	0	↔
Germany	Ramstein AB	F	2	2	0	0	0	0	0	0	0	2	2	5	40	↓
Germany	Spangdahlem AB	F	0	0	0	1	0	0	0	0	0	1	0	0	0	↔
Germany	USAG Bavaria	A	2	2	0	2	0	0	0	0	0	1	2	11	18	↓
Germany	USAG Hohenfels/Amberg	A	1	3	0	0	0	0	0	0	1	3	2	5	40	↓
Germany	USAG Kaiserslautern	A	0	1	0	0	0	0	0	0	0	1	0	2	0	↔
Germany	USAG Katterbach	A	4	5	0	0	0	0	0	0	0	1	4	5	80	↓
Germany	USAG Wiesbaden	A	1	3	0	0	0	0	0	0	0	0	1	2	50	↑
Italy	Aviano AB	F	0	0	0	0	0	1	0	0	0	1	0	3	0	↔
Italy	NAS Sigonella	N	1	1	0	0	0	0	0	0	0	0	1	5	20	↓
Italy	NSA Naples	N	1	5	0	3	0	5	0	0	0	0	1	21	5	↑
Italy	USAG Italy	A	3	3	0	1	0	2	0	0	1	1	4	7	57	↑
Spain	NS Rota	N	1	2	0	6	0	1	0	0	3	4	4	22	18	↑
Turkey	Incirlik AB	F	0	0	0	0	0	0	0	0	0	0	0	2	0	↔
United Kingdom	RAF Alconbury	F	0	0	0	0	0	0	0	0	0	0	0	0	0	↔
United Kingdom	RAF Croughton	F	0	0	0	0	0	1	0	0	0	0	0	0	0	↔
United Kingdom	RAF Lakenheath	F	7	9	0	0	0	1	0	0	0	2	7	26	27	↑

Influenza Activity: INDOPACOM (2019-2020 Season: Week 01)

- ILI activity remained minimal in Guam, but increased to low in Hawaii and moderate in Japan and the Republic of Korea.
- The majority of positive specimens over the past 2 weeks continued to be influenza A.
- Among subtyped specimens, the majority have been influenza A (H1N1) for the season.

ILI Activity (Service Members) and Laboratory-Confirmed Influenza (All Beneficiaries)



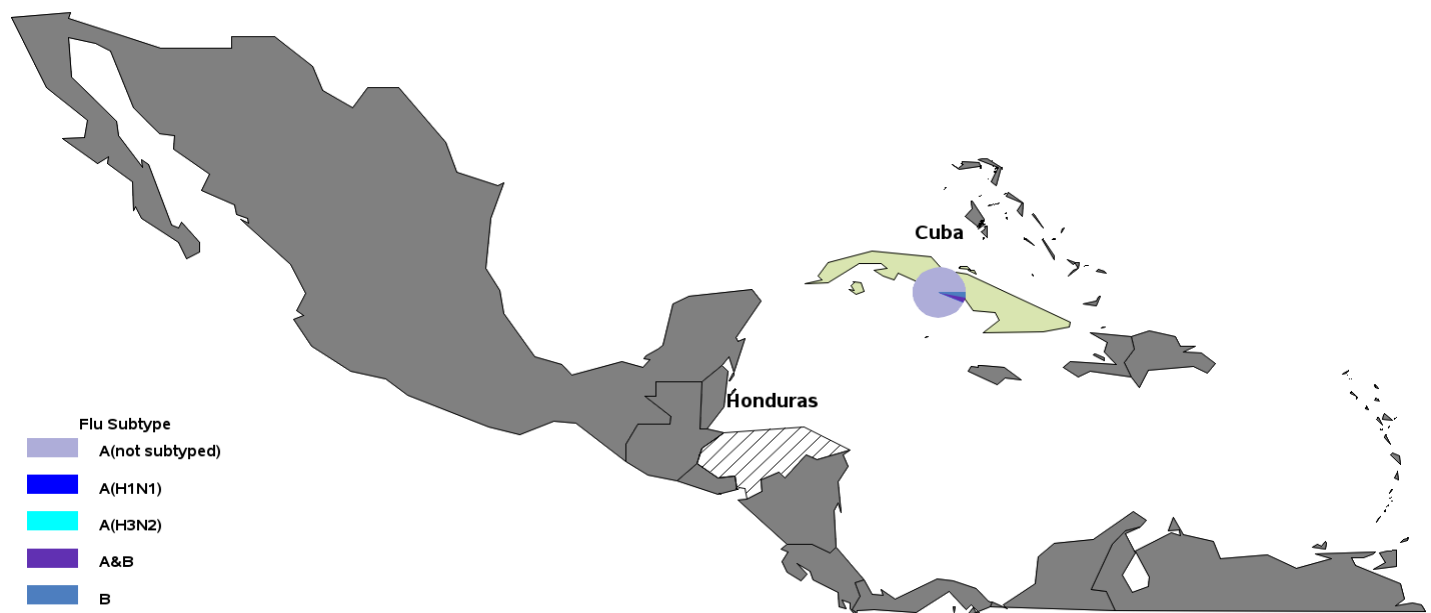
*Locations colored in dark gray have no Service Member medical encounter data.

Country	Location	Service	A (not sub-typed)		A (H1N1)		A (H3N2)		A & B		B		Total positive	Total tested	% Positive	Change from last report
			2 wks	Season	2 wks	Season	2 wks	Season	2 wks	Season	2 wks	Season	2 wks	2 wks	2 wks	
Guam	JB Andersen	J	5	87	0	15	0	2	0	0	2	10	7	56	13	↓
Japan	CFA Okinawa	N	2	15	0	0	0	0	0	0	1	7	3	9	33	↑
Japan	CFA Yokosuka	N	4	34	0	0	0	0	0	2	0	1	4	35	11	↑
Japan	Camp Foster	N	1	1	0	0	0	0	0	0	0	0	1	3	33	↓
Japan	Camp Fuji	N	0	0	0	0	0	0	0	0	0	0	0	0	0	↔
Japan	Camp Zama	A	4	9	0	0	0	0	0	0	0	1	4	10	40	↓
Japan	Kadena AB	F	0	1	0	2	0	1	0	0	0	1	0	6	0	↔
Japan	MCAS Futenma	N	1	1	0	0	0	0	0	0	0	0	1	1	100	↑
Japan	MCAS Iwakuni	N	6	13	0	0	0	0	0	0	0	1	6	25	24	↓
Japan	Misawa AB	F	2	6	0	0	0	0	0	1	1	3	3	26	12	↓
Japan	NAF Atsugi	N	2	2	0	0	0	0	0	0	0	0	2	4	50	↑
Japan	NB Okinawa	N	5	21	0	0	0	0	0	0	0	3	5	37	14	↑
Japan	USFA Sasebo	N	0	0	0	0	0	0	0	0	0	0	0	1	0	↔
Japan	Yokota AB	F	4	15	0	14	0	0	1	1	0	3	5	36	14	↓
Korea, Republic of	CFA Chinhae	N	0	0	0	0	0	0	0	0	0	0	0	0	0	↔
Korea, Republic of	Camp Casey	A	0	0	0	0	0	0	0	0	0	0	0	0	0	↔
Korea, Republic of	Camp Humphreys	A	1	5	0	0	0	0	0	0	1	1	2	4	50	↑
Korea, Republic of	Camp Walker	A	1	11	0	0	0	0	0	0	0	0	1	7	14	↓
Korea, Republic of	Kunsan AB	F	1	1	0	0	0	0	0	0	0	0	1	2	50	↓
Korea, Republic of	Osan AB	F	7	22	0	11	0	1	0	0	0	3	7	39	18	↓
Korea, Republic of	Yongsan Garrison	A	14	30	0	0	0	0	0	0	0	14	14	44	32	↔
United States	Camp H M Smith	N	0	0	0	0	0	0	0	0	0	0	0	0	0	↔
United States	Ft Shafter	A	29	54	1	20	0	4	1	7	6	16	37	153	24	↑
United States	JB Pearl Harbor-Hickam	J	5	25	0	0	0	0	0	0	1	5	6	13	46	↓
United States	MCB Hawaii	N	0	4	0	1	0	0	0	0	0	1	0	4	0	↔
United States	Schofield Barracks	A	4	13	0	0	0	0	0	1	3	7	7	30	23	↑

Influenza Activity: SOUTHCOM (2019-2020 Season: Week 01)

- ILI activity remained minimal in Cuba.
- Data from Honduras is only available through 21DEC2019, so ILI activity for week 01 cannot be provided.
- The majority of positive specimens continued to be Influenza A.

ILI Activity (Service Members) and Laboratory-Confirmed Influenza (All Beneficiaries)



Locations colored in dark gray have no Service Member medical encounter data.

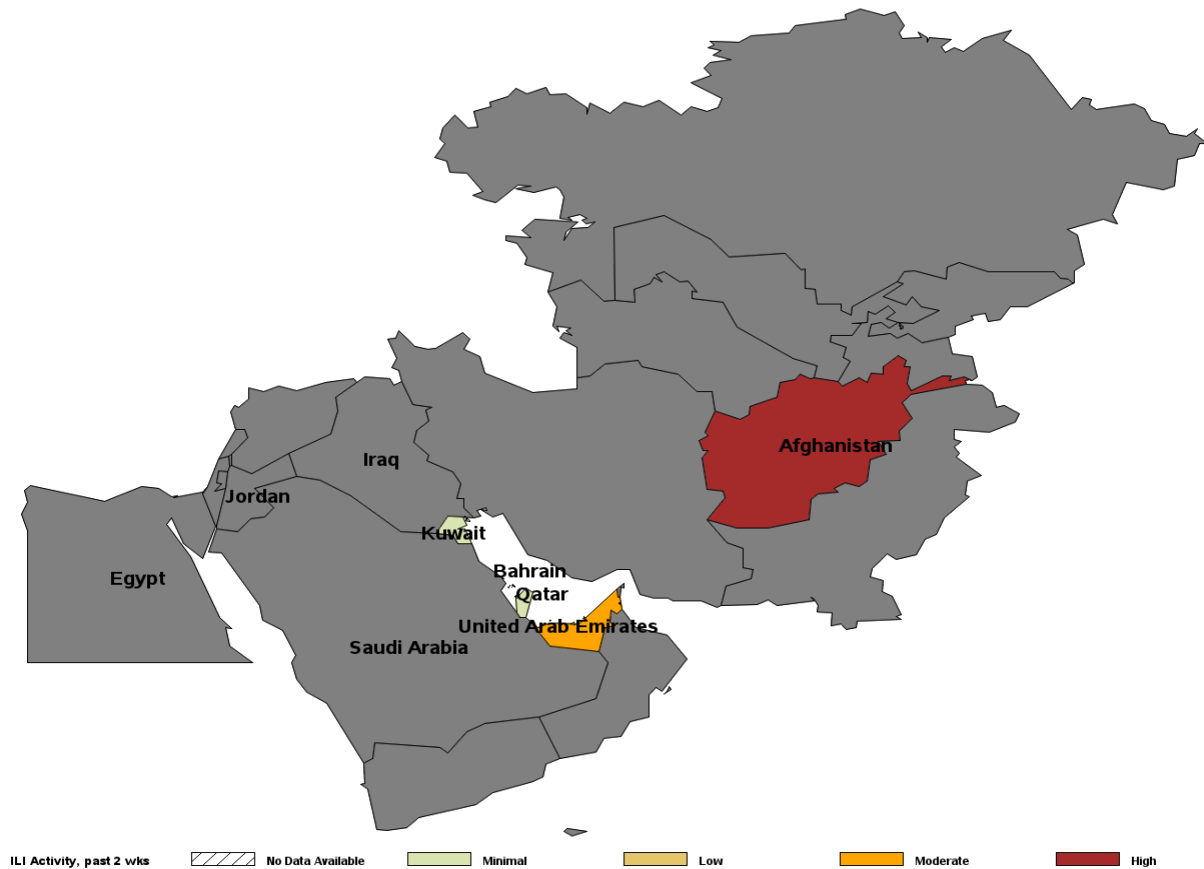
Moderate High

Country	Location	Service	A (not sub-typed)		A (H1N1)		A (H3N2)		A & B		B		Total positive	Total tested	% Positive	Change from last report
			2 wks	Season	2 wks	Season	2 wks	Season	2 wks	Season	2 wks	Season	2 wks	2 wks	2 wks	
Cuba	Guantanamo Bay	N	0	30	0	0	0	0	0	1	0	1	0	4	0	↔

Influenza Activity: CENTCOM (2019-2020 Season: Week 01)

- ILI activity varied by country in CENTCOM:
 - Afghanistan ILI activity remained high
 - ILI activity remained moderate in the United Arab Emirates
 - ILI activity decreased to minimal in Kuwait and Qatar

ILI Activity (Service Members)



NORTHCOM Laboratory-Confirmed Influenza

(2019-2020 Season: Week 01)

Laboratory-Confirmed Influenza (All Beneficiaries) by Installation Alaska through Georgia

State	Location	Service	A (not subtyped)		A (H1N1)		A (H3N2)		A & B		B		Total positive	Total tested	% Positive	Change from last report
			2 wks	Season	2 wks	Season	2 wks	Season	2 wks	Season	2 wks	Season	2 wks	2 wks	2 wks	
AK	Eielson AFB	F	0	0	0	0	0	0	0	0	1	3	1	5	20	↓
AK	Ft Greely	A	0	0	0	0	0	0	0	0	0	0	0	0	0	↔
AK	Ft Wainwright	A	20	34	0	5	0	0	0	0	21	47	41	110	37	↔
AK	JB Elmendorf-Richardson	J	7	18	0	3	0	2	0	0	35	79	42	101	42	↓
AL	Ft Rucker	A	4	8	0	0	0	0	0	0	3	54	7	23	30	↓
AL	Maxwell AFB	F	4	10	0	5	0	0	0	1	1	19	5	16	31	↑
AL	Redstone Arsenal	A	1	1	0	0	0	0	0	0	3	16	4	18	22	↓
AR	Little Rock AFB	F	0	0	1	4	0	0	0	0	2	4	3	10	30	↓
AZ	Davis-Monthan AFB	F	0	0	0	1	0	0	0	0	0	8	0	2	0	↔
AZ	Ft Huachuca	A	0	1	0	1	0	0	0	0	0	5	0	5	0	↔
AZ	Luke AFB	F	1	2	0	1	0	0	0	2	3	34	4	14	29	↓
AZ	MCAS Yuma	N	0	0	0	0	0	0	0	0	1	5	1	1	100	↓
CA	Beale AFB	F	0	4	0	0	0	0	0	0	2	5	2	8	25	↑
CA	Camp Pendleton	N	18	66	9	20	1	12	0	1	49	150	77	212	36	↑
CA	Edwards AFB	F	0	0	0	0	0	0	0	0	1	1	1	2	50	↓
CA	Ft Irwin	A	3	6	0	0	0	0	0	0	12	65	15	61	25	↓
CA	Los Angeles AFB	F	1	1	0	0	0	0	0	0	1	2	2	3	67	↓
CA	MBHC Eastlake	N	0	0	2	4	0	0	0	0	0	2	2	4	50	↓
CA	NAF El Centro	N	0	0	0	0	0	0	0	0	0	0	0	0	0	↔
CA	NB Coronado	N	0	0	0	0	0	0	0	0	1	1	1	4	25	↓
CA	NB San Diego	N	2	6	36	55	3	13	2	4	33	103	76	285	27	↓
CA	NV Ventura County	N	0	0	0	0	0	0	0	0	0	0	0	1	0	↔
CA	Twentynine Palms	N	10	33	0	0	0	0	0	0	12	134	22	107	21	↓
CA	Vandenberg AFB	F	0	0	0	0	0	0	0	0	0	0	0	2	0	↔
CO	Buckley AFB	F	0	3	0	0	0	0	0	0	1	7	1	4	25	↓
CO	Ft Carson	A	16	77	0	0	0	0	0	1	87	252	103	290	36	↓
CO	Peterson AFB	F	2	3	0	4	0	2	0	0	4	15	6	11	55	↓
CO	Schriever AFB	F	1	1	0	1	0	0	0	0	1	3	2	7	29	↓
CO	USAF Academy	F	1	7	0	0	0	1	0	0	5	24	6	16	38	↓
CT	NSB New London	N	1	3	0	0	0	0	0	0	1	8	2	8	25	↑
DC	JB Anacostia-Bolling	F	0	0	0	0	0	0	0	0	1	5	1	2	50	↑
DC	Pentagon	J	1	5	0	0	0	0	0	0	0	2	1	11	9	↑
DC	Washington Navy Yard	N	0	0	0	0	0	0	0	0	0	0	0	1	0	↔
DE	Dover AFB	F	0	0	0	1	0	0	0	0	3	13	3	7	43	↓
FL	Eglin AFB	J	31	52	1	9	0	1	1	1	16	38	49	120	41	↓
FL	Hurlburt Field	F	2	4	0	0	0	0	0	0	2	7	4	10	40	↑
FL	Macdill AFB	F	5	22	0	0	0	1	0	0	3	75	8	32	25	↓
FL	NAS Jacksonville	J	56	136	0	0	0	0	1	1	17	131	74	228	32	↓
FL	NAS Key West	J	0	8	0	0	0	0	0	0	1	1	1	1	100	↓
FL	NAS Pensacola	N	33	66	0	0	0	0	1	2	19	170	53	211	25	↔
FL	NAS Whiting Field	N	2	3	0	0	0	0	0	0	1	6	3	11	27	↓
FL	NS Mayport	J	5	25	0	0	0	0	0	0	2	24	7	19	37	↑
FL	Patrick AFB	F	4	17	0	0	0	0	0	1	4	30	8	22	36	↓
FL	Tyndall AFB	F	0	1	0	0	0	0	0	1	1	3	1	1	100	↓
GA	Ft Benning	A	107	180	0	0	0	2	0	5	66	170	173	394	44	↓
GA	Ft Gordon	A	21	43	0	0	0	0	0	2	20	84	41	197	21	↓
GA	Ft Stewart	A	12	25	0	0	0	0	0	2	16	72	28	106	26	↓
GA	Hunter Army Airfield	A	0	4	0	0	0	0	0	0	1	10	1	5	20	↓
GA	Moody AFB	F	1	2	0	7	0	0	0	0	0	6	1	3	33	↓
GA	NAS Albany	J	1	2	0	0	0	0	0	0	2	14	3	6	50	↔
GA	NSB Kings Bay	J	0	5	0	0	0	0	0	0	0	3	0	8	0	↔
GA	Robins AFB	F	0	0	1	12	0	0	0	0	0	2	1	1	100	↓

Disclaimer: Due to the transition to MHS GENESIS, data are not available from NH Oak Harbor, NH Bremerton, AFMS Fairchild, Madigan AMC, Travis AFB, Presidio of Monterey AB, NAS Lemoore, or Mountain Home AFB. Therefore, these sites are not included in this report.

NORTHCOM Laboratory-Confirmed Influenza

(2019-2020 Season: Week 01)

Laboratory-Confirmed Influenza (All Beneficiaries) by Installation Illinois through New York

State	Location	Service	A (not subtyped)		A (H1N1)		A (H3N2)		A & B		B		Total positive	Total tested	% Positive	Change from last report
			2 wks	Season	2 wks	Season	2 wks	Season	2 wks	Season	2 wks	Season	2 wks	Season	2 wks	
IL	NS Great Lakes	N	8	24	0	1	0	0	0	1	20	228	28	153	18	↑
IL	Scott AFB	F	1	1	2	7	0	0	0	1	2	4	5	8	63	↓
KS	Ft Leavenworth	A	5	28	0	0	0	0	0	0	0	14	5	22	23	↓
KS	Ft Riley	A	17	30	0	0	0	0	0	0	35	64	52	163	32	↑
KS	Mcconnell AFB	F	1	2	0	0	0	0	0	0	0	1	1	3	33	↓
KY	Ft Campbell	A	45	88	0	0	0	0	0	0	58	117	103	386	27	↓
KY	Ft Knox	A	1	10	0	0	0	0	0	0	0	3	1	7	14	↓
LA	Barksdale AFB	F	1	5	0	0	0	0	0	0	3	5	4	21	19	↓
LA	Ft Polk	A	29	43	0	0	0	0	1	1	20	56	50	127	39	↓
LA	NAS Belle Chase	N	3	3	0	0	0	0	0	0	0	1	3	7	43	↑
MA	Hanscom AFB	F	0	0	0	0	0	0	0	0	0	0	0	1	0	↔
MD	Aberdeen Proving Ground	A	2	5	0	0	0	0	0	0	3	8	5	18	28	↑
MD	Ft Detrick	A	4	6	0	0	0	0	0	0	4	16	8	20	40	↓
MD	Ft Meade	A	0	2	0	0	0	0	0	0	3	8	3	10	30	↓
MD	JB Andrews	F	17	29	0	0	0	1	0	1	46	100	63	196	32	↑
MD	NAS Patuxent River	N	2	4	0	0	0	0	0	0	4	6	6	22	27	↑
MD	NBHC Bancroft Hall	N	0	20	0	0	0	0	0	0	1	6	1	2	50	↑
MD	NHC Annapolis	N	1	10	0	0	0	0	0	0	2	4	3	13	23	↓
MD	NSF Indian Head	N	0	0	0	0	0	0	0	0	0	2	0	0	0	↔
MD	WRNMMC	J	30	63	2	3	0	0	0	1	84	153	116	348	33	↑
MO	Ft Leonard Wood	A	8	19	0	2	1	2	0	0	14	27	23	109	21	↓
MO	Whiteman AFB	F	0	1	0	0	0	0	0	0	1	2	1	6	17	↑
MS	Columbus AFB	F	0	1	0	0	0	0	0	0	3	5	3	10	30	↑
MS	Keesler AFB	J	11	20	0	2	0	0	0	0	20	140	31	139	22	↓
MS	NAS Meridian	N	0	1	0	0	0	0	0	0	0	2	0	0	0	↔
MS	NBHC Gulfport	N	1	3	0	0	0	0	0	0	1	19	2	6	33	↓
MT	Malmstrom AFB	F	0	1	0	0	0	0	0	0	0	2	0	0	0	↔
NC	Camp Lejeune	N	28	168	0	1	0	0	0	0	13	65	41	175	23	↑
NC	Ft Bragg	J	3	4	0	0	0	0	0	0	2	3	5	221	2	↓
NC	MCAS Cherry Point	N	3	6	0	0	0	0	0	0	4	16	7	21	33	↓
NC	Pope Army Airfield	J	0	0	0	0	0	0	0	0	0	0	0	23	0	↔
NC	Seymour Johnson AFB	J	0	1	0	0	0	1	0	0	1	2	1	3	33	↑
ND	Grand Forks AFB	F	0	0	0	0	0	0	0	0	0	0	0	0	0	↔
ND	Minot AFB	F	0	0	0	0	0	0	0	0	0	1	0	9	0	↔
NE	Offutt AFB	F	0	1	2	18	0	0	0	0	1	2	3	4	75	↓
NH	Portsmouth	N	2	2	0	0	0	0	0	0	0	1	2	5	40	↓
NJ	JB McGuire-Dix-Lakehurst	F	1	3	0	0	0	1	0	0	0	2	1	6	17	↑
NM	Cannon AFB	F	0	0	0	0	0	0	0	0	0	1	0	0	0	↔
NM	Holloman AFB	F	0	1	0	0	0	0	1	1	6	1	5	20	↓	
NM	Kirtland AFB	F	1	1	1	3	0	2	0	0	1	7	3	9	33	↓
NM	White Sands Missile Range	A	0	0	0	0	0	0	0	0	0	2	0	1	0	↔
NV	Nellis AFB	F	17	34	0	12	0	4	0	0	3	179	20	60	33	↑
NY	Ft Drum	A	1	3	0	0	0	5	0	0	2	12	3	13	23	↑
NY	West Point	A	4	7	0	5	0	4	0	0	8	18	12	31	39	↑

Disclaimer: Due to the transition to MHS GENESIS, data are not available from NH Oak Harbor, NH Bremerton, AFMS Fairchild, Madigan AMC, Travis AFB, Presidio of Monterey AB, NAS Lemoore, or Mountain Home AFB. Therefore, these sites are not included in this report.

NORTHCOM Laboratory-Confirmed Influenza

(2019-2020 Season: Week 01)

Laboratory-Confirmed Influenza (All Beneficiaries) by Installation Ohio through Wyoming

State	Location	Service	A (not subtyped)		A (H1N1)		A (H3N2)		A & B		B		Total positive	Total tested	% Positive	Change from last report
			2 wks	Season	2 wks	Season	2 wks	Season	2 wks	Season	2 wks	Season	2 wks	2 wks	2 wks	
OH	Wright-Patterson AFB	F	2	2	18	32	1	2	0	1	26	52	47	128	37	↓
OK	Altus AFB	F	1	1	0	0	0	0	0	0	1	3	2	11	18	↓
OK	Ft Sill	A	7	16	0	1	0	0	0	0	17	46	24	69	35	↓
OK	Tinker AFB	F	0	0	0	0	0	0	0	0	4	12	4	19	21	↑
OK	Vance AFB	F	0	0	0	3	0	0	0	1	3	5	3	9	33	↑
PA	Carlisle Barracks	A	1	1	0	0	0	0	0	0	2	4	3	12	25	↑
PR	Ft Buchanan	A	0	0	0	0	0	0	0	0	3	10	3	14	21	↑
PR	NS Roosevelt Roads	N	0	2	0	0	0	0	0	0	0	0	0	0	0	↔
RI	NHC New England	N	0	0	0	0	0	0	0	0	0	0	0	2	0	↔
SC	Ft Jackson	A	16	44	0	0	0	0	0	0	15	74	31	104	30	↔
SC	JB Charleston	J	1	20	0	1	0	0	0	0	6	32	7	36	19	↓
SC	MCAS Beaufort	N	0	4	0	1	0	1	0	0	0	4	0	5	0	↔
SC	Parris Island	N	2	6	0	0	0	0	0	0	7	25	9	53	17	↓
SC	Shaw AFB	F	3	4	0	2	0	1	0	0	2	20	5	14	36	↑
SD	Ellsworth AFB	F	0	0	0	0	0	0	0	0	2	3	2	12	17	↑
TN	Ft Campbell	A	4	21	0	2	0	1	0	0	4	42	8	28	29	↑
TN	NSA Mid-South	N	3	5	0	0	0	0	0	0	1	2	4	12	33	↑
TX	Dyess AFB	F	0	3	0	0	0	0	0	2	2	7	2	17	12	↓
TX	Ft Bliss	A	54	81	1	33	0	6	1	3	138	249	194	593	33	↓
TX	Ft Hood	A	68	122	2	7	0	0	1	3	35	1093	106	416	25	↓
TX	Goodfellow AFB	F	2	2	0	0	0	0	0	0	2	10	4	13	31	↑
TX	JB San Antonio	J	211	417	27	55	1	2	4	9	206	555	449	988	45	↓
TX	Laughlin AFB	F	1	1	0	1	0	0	0	0	1	3	2	6	33	↓
TX	NAS Corpus Christi	N	0	2	0	0	0	0	0	0	1	2	1	2	50	↓
TX	Sheppard AFB	F	2	4	0	4	0	0	0	0	2	11	4	15	27	↓
UT	Hill AFB	F	2	2	0	0	0	0	0	0	3	4	5	11	45	↑
VA	Ft Belvoir	J	32	64	0	0	0	0	2	3	115	268	149	473	32	↓
VA	Ft Lee	A	0	9	0	0	0	0	0	2	4	32	4	18	22	↓
VA	JB Langley-Eustis	J	8	23	1	6	0	1	0	0	13	56	22	53	42	↓
VA	JB Little Creek-Ft Story	J	2	2	0	0	0	0	0	0	0	0	2	4	50	↑
VA	JB Myer-Henderson Hall	A	1	2	0	0	0	0	0	0	4	13	5	11	45	↓
VA	MCB Quantico	N	3	6	0	0	0	0	0	0	5	17	8	28	29	↔
VA	NAS Oceana	N	1	1	0	0	0	0	0	0	2	3	3	5	60	↑
VA	NB Dam Neck	N	1	1	0	0	0	0	0	0	0	0	1	3	33	↓
VA	NS Norfolk	N	0	0	0	0	0	0	0	0	3	5	3	8	38	↑
VA	NWS Dahlgren	N	0	0	0	0	0	0	0	0	0	0	0	2	0	↔
VA	NWS Yorktown	N	0	0	0	0	0	0	0	0	0	3	0	2	0	↔
VA	Portsmouth	N	3	5	10	18	0	4	0	0	30	115	43	108	40	↑
VA	TPC Suffolk	N	0	0	0	0	0	0	0	0	0	1	0	0	0	↔
WY	FE Warren AFB	F	1	5	0	0	0	0	0	0	2	3	3	15	20	↑

Disclaimer: Due to the transition to MHS GENESIS, data are not available from NH Oak Harbor, NH Bremerton, AFMS Fairchild, Madigan AMC, Travis AFB, Presidio of Monterey AB, NAS Lemoore, or Mountain Home AFB. Therefore, these sites are not included in this report.

Surveillance Programs and Data Sources

Defense Health Agency / Armed Forces Health Surveillance Branch (AFHSB):

The Armed Forces Health Surveillance Branch (AFHSB) is the central epidemiologic resource for the U.S. Armed Forces, conducting medical surveillance to protect those who serve our nation in uniform and allies who are critical to our national security interests. The Epidemiology and Analysis Section of AFHSB, the Epi Data Center of the Navy and Marine Corps Public Health Center, and the Air Force Satellite Office in Dayton, Ohio (Wright-Patterson AFB) have compiled data for this report from the following sources below.

Influenza-like Illness Activity:

Medical encounter and demographic data from the AFHSB's Defense Medical Surveillance System (DMSS) are used to generate portions of this report. ICD-10 codes from outpatient encounters are used to identify influenza-like illness (ILI). ILI is defined using the following codes: B97.89, H66.9, H66.90, H66.91, H66.92, H66.93, J00, J01.9, J01.90, J06.9, J09, J09.X, J09.X1, J09.X2, J09.X3, J09.X9, J10, J10.0, J10.00, J10.01, J10.08, J10.1, J10.2, J10.8, J10.81, J10.82, J10.83, J10.89, J11, J11.0, J11.00, J11.08, J11.1, J11.2, J11.8, J11.81, J11.82, J11.83, J11.89, J12.89, J12.9, J18, J18.1, J18.8, J18.9, J20.9, J40, R05, R50.9.

The percentage of all outpatient visits that have an ILI code is calculated each week for all service members, regardless of component. These data are presented weekly for the current season and compared to the four prior seasons among service members. Influenza activity levels are calculated by comparing the mean reported percent of visits due to ILI for the previous two weeks to the mean reported percent of visits due to ILI during baseline weeks (defined as non-influenza weeks (weeks 22-39) over the past 3 years). There are four influenza activity levels, minimal, low, moderate, and high. The activity level corresponds to the number of standard deviations (SD) below, at or above the mean for the current 2 week period compared to the mean of the baseline weeks. Minimal activity corresponds to an influenza percentage that is less than 2 SD above the mean. Low activity corresponds to an influenza percentage that is equal to or greater than 2 SD above the mean, but less than 4 SD above the mean. Moderate activity corresponds to an influenza percentage that is equal to or greater than 4 SD above the mean, but less than 6 SD above the mean. High activity corresponds to an influenza percentage that is equal to or greater than 6 SD above the mean.

Influenza activity levels are presented in the Combatant Command (CCMD) maps, either by Installation, state, or country.

Influenza Positive Specimens:

Influenza lab results (HL-7 formatted data) are compiled and transmitted from the Navy and Marine Corps Public Health Center to AFHSB. Results obtained via PCR, viral culture, and rapid influenza assays are reported. Although the inclusion of rapid tests may underestimate the weekly and cumulative percent positive estimates due to false negatives, visibility of the positive rapid results provides valuable information for this surveillance report. Influenza types/subtypes are categorized as influenza A/not subtyped, influenza A(H1N1), influenza A(H3N2), influenza A and B co-infection, and influenza B. Additionally, laboratory-confirmed positive results are used to identify influenza-related hospitalization cases across the DoD.

The percent positivity is calculated by dividing the number of influenza positive specimens by the total number of specimens (positive and negative only; inconclusive results are excluded). The distributions of percent positive specimens by subtype are presented on a weekly basis for the entire influenza season. For each CCMD state, the distribution of subtypes for the previous 2 weeks are presented as pie graphs for states and countries. For installations, data are presented in tables with counts and percent positive by subtype for the past 2 weeks and for the entire season. The "change from last report" column reports the absolute difference in the percent positive from the prior week's report to the current week's report.

Surveillance Programs and Data Sources

Pharmacy Transactions for Dispensed Antiviral Prescriptions:

HL7-formatted pharmacy transactions are used to assess the number of dispensed influenza antiviral (AV) prescriptions. Four influenza AV medications approved by the Food and Drug Administration (FDA) are recommended by the CDC for use in the United States (US) for the 2019-2020 influenza season: oral oseltamivir (Tamiflu® or generic), inhaled zanamivir (Relenza®), and intravenous peramivir (Rapivab®), and baloxavir marboxil (Xofluza®). These prescriptions are included in this surveillance. The overall count of dispensed AV prescriptions by week is presented graphically for the influenza season. A seasonal baseline is displayed with dispensed AV prescriptions. Surveillance thresholds are displayed with the count of inpatient dispensed AV prescriptions. Additionally, counts of inpatient dispensed influenza AV prescriptions are presented weekly for the influenza season.

Baselines, Thresholds, and Trends:

Weekly baselines used a three-year average to compare results with those from the same week during the previous three seasons. Bands for one and two standard deviations above seasonal baseline estimates are displayed to indicate when trends diverge with respect to timing or volume from those of recent seasons. The ILI, lab, and dispensed AV prescription data thresholds are calculated by adding two standard deviations to the off-season average.

Inpatient thresholds (lab and dispensed AV prescription data) are calculated by adding one standard deviation to the overall weighted average for in-season weeks. Weeks that represent at least 2% of the total season's laboratory-positive influenza cases for at least two consecutive weeks was considered to be "in-season" or influenza weeks; all other weeks are considered to be "off-season" or non-influenza weeks.

Links to Service-Specific Influenza Reports:

Select the following links to see service-specific influenza surveillance weekly reports:

- Navy and Marine Corps Public Health Center (NMCPHC):
<https://www.med.navy.mil/sites/nmcphc/epi-data-center/influenza/Pages/default.aspx>
- United States Air Force School of Aerospace Medicine (USAFSAM)/Defense Health Agency (DHA):
<https://hpws.afrl.af.mil/epi-consult/influenza/ActivityUpdates.cfm>