

DoD Consolidated Influenza Surveillance Report

Week 06 (02 February 2020— 08 February 2020)



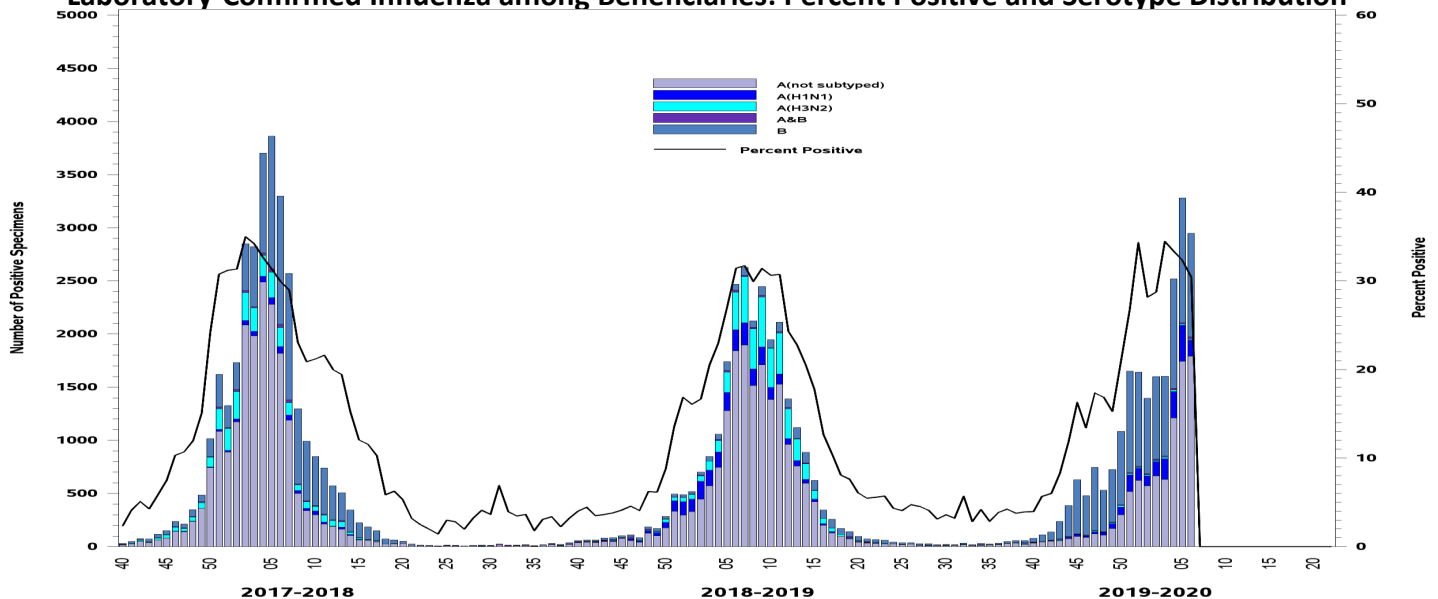
One Page Summary: Weekly Highlights

- Among all beneficiaries, laboratory-confirmed influenza cases and dispensed antiviral prescriptions counts during weeks 5 and 6 were the highest for the season to-date. Inpatient counts among all beneficiaries increased, but remained at normal levels.
- Among active component Service Members, laboratory-confirmed influenza cases remained elevated, while antivirals prescriptions were low during week 6. Influenza-like illness (ILI) activity increased to high levels.
- Nineteen installations had high ILI activity.
- The majority of laboratory-confirmed influenza cases continued to be type B in NORTHCOM, although influenza A was increasing. Influenza A continued to predominate in all other combatant commands with data.
- Twenty-two new laboratory-confirmed influenza hospitalizations were reported for week 06 (Season total: 146).

Influenza Surveillance Indicators (2019-2020 season)

All Beneficiaries	Total Per Week	Trend	Activity Level
Laboratory Cases	2956	◀▶	Normal
Dispensed Antivirals	4187	▲	Normal
Severity			Activity Level
Inpatient Laboratory Cases	22	▲	Normal
Inpatient Dispensed Antivirals	77	◀▶	Normal
Active Component			Activity Level
Laboratory Cases	701	◀▶	Elevated
Dispensed Antivirals	814	◀▶	Low
ILI Outpatient Visits	3%	◀▶	High

Laboratory-Confirmed Influenza among Beneficiaries: Percent Positive and Serotype Distribution

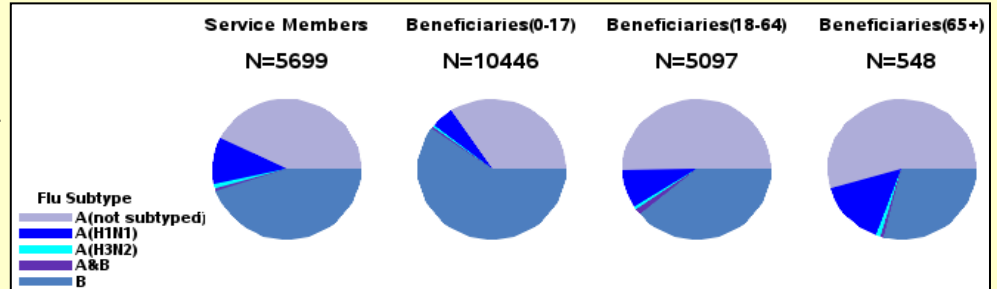


Disclaimer: Due to the transition to MHS GENESIS, data are not available from NH Oak Harbor, NH Bremerton, AFMS Fairchild, Madigan AMC, Travis AFB, Presidio of Monterey AB, NAS Lemoore, or Mountain Home AFB. Therefore, these sites are not included in this report.

Laboratory-Confirmed Influenza (2019-2020 Season: Week 06)

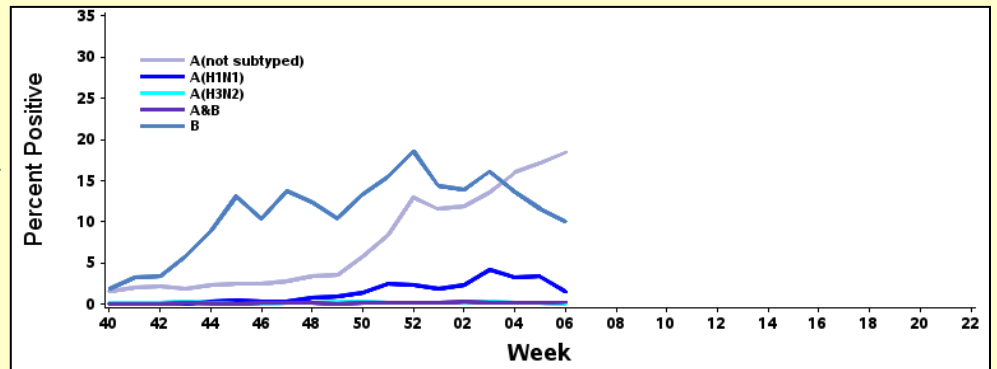
- Children continued to have the highest number of laboratory-confirmed influenza positive specimens at 10,446; Service Members had the second highest count at 5,699.

Number and Distribution of Positive Specimens, by Beneficiary Status and Serotype



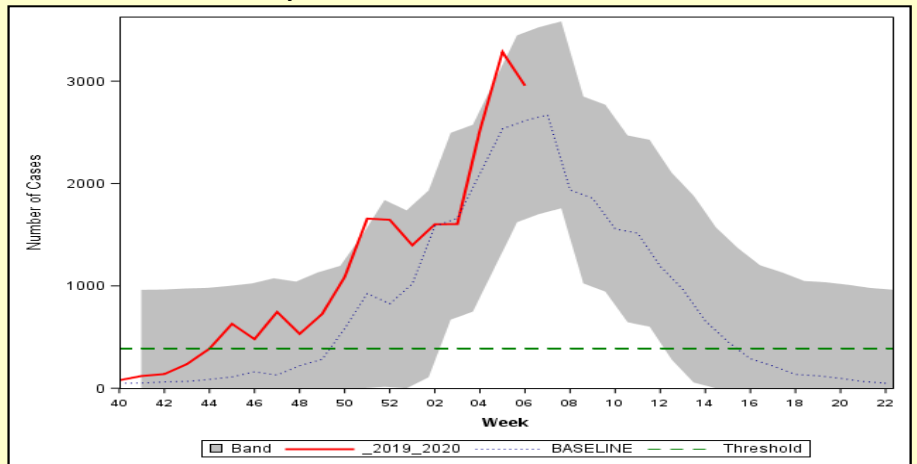
- For the past 3 weeks, influenza A has continued to have the highest proportion of laboratory-confirmed influenza positive specimens compared to influenza B among all beneficiaries.

Percent of Specimens Positive for Influenza by Serotype



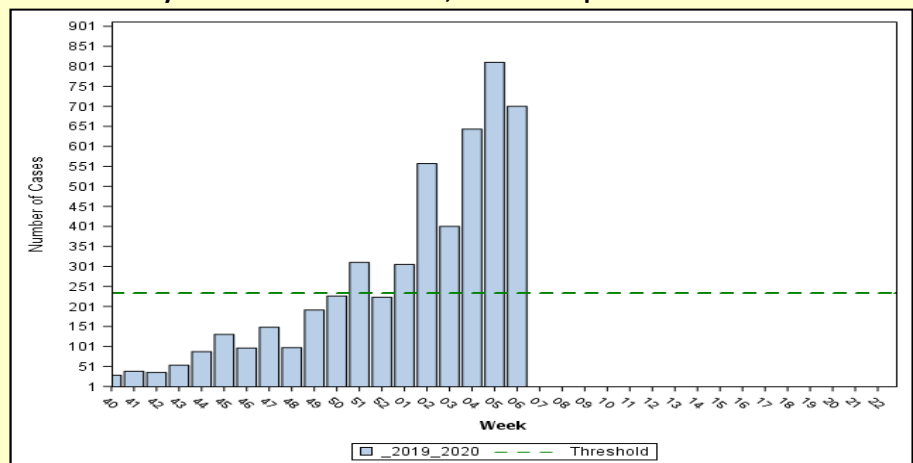
- The number of laboratory-confirmed cases among all beneficiaries decreased from a high point during week 05, but remained above baseline and threshold.
- Band indicates one standard deviation above and below seasonal baseline estimates. Threshold indicates two standard deviations above off-season average.

Laboratory-Positive Influenza Cases, All Beneficiaries



- The number of active component Service Member laboratory-confirmed cases decreased from a high point during week 05, but remained well above the threshold.
- Threshold indicates two standard deviations above seasonal baseline estimates.

Laboratory-Positive Influenza Cases, Active Component Service Members

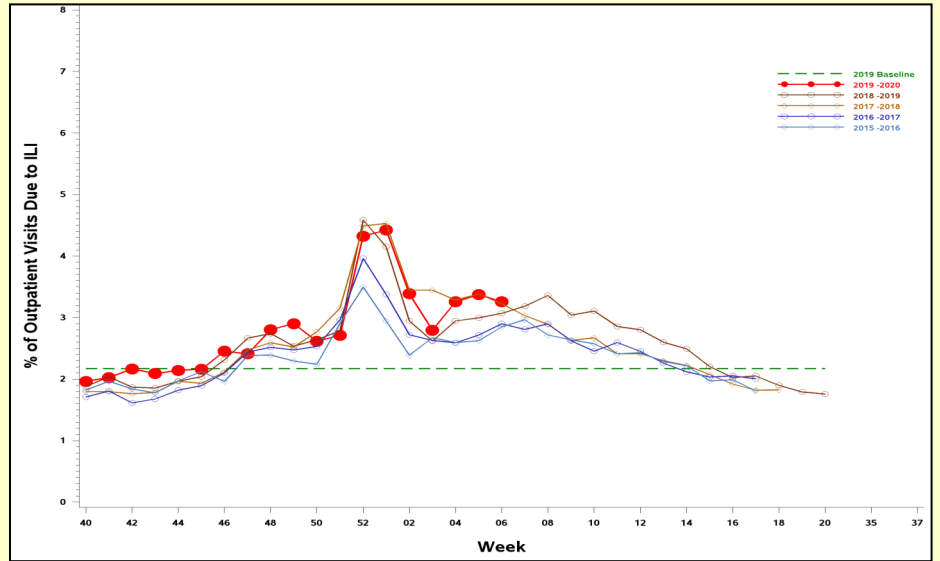


Disclaimer: Due to the transition to MHS GENESIS, data are not available from NH Oak Harbor, NH Bremerton, AFMS Fairchild, Madigan AMC, Travis AFB, Presidio of Monterey AB, NAS Lemoore, or Mountain Home AFB. Therefore, these sites are not included in this report.

ILI and Dispensed Antiviral Prescriptions (2019-2020 Season: Week 06)

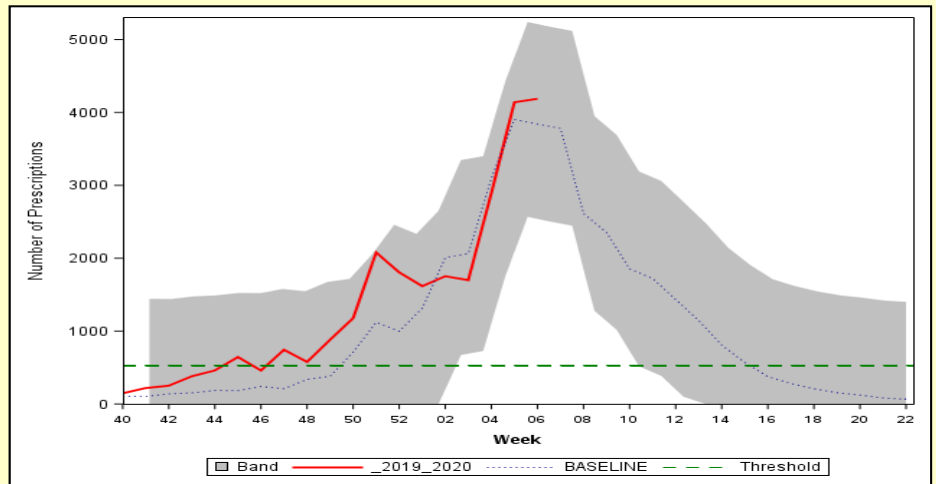
- The percent of outpatient visits due to ILI among Service Members decreased slightly, but remained above baseline and similar to the 2017-2018 season.

**Percent of Outpatient Visits Due to ILI:
Service Members, 2015-2016 to 2019-2020 Seasons**



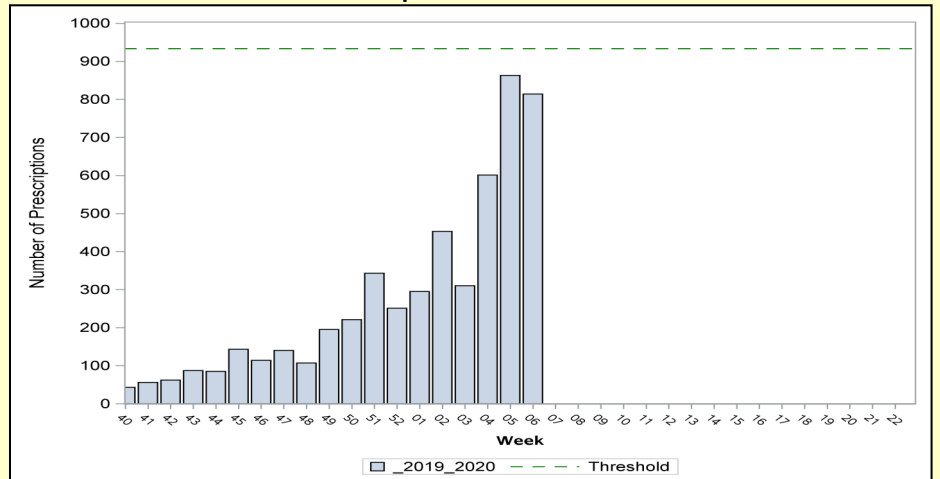
- Dispensed antiviral prescriptions among all beneficiaries continued to increase and was above baseline for the second continuous week.
- Band indicates one standard deviation above and below seasonal baseline estimates. Threshold indicates two standard deviations above off-season average.

Influenza-Specific Dispensed Antiviral Prescriptions, All Beneficiaries



Influenza-Specific Dispensed Antiviral Prescriptions:

Active Component Service Members



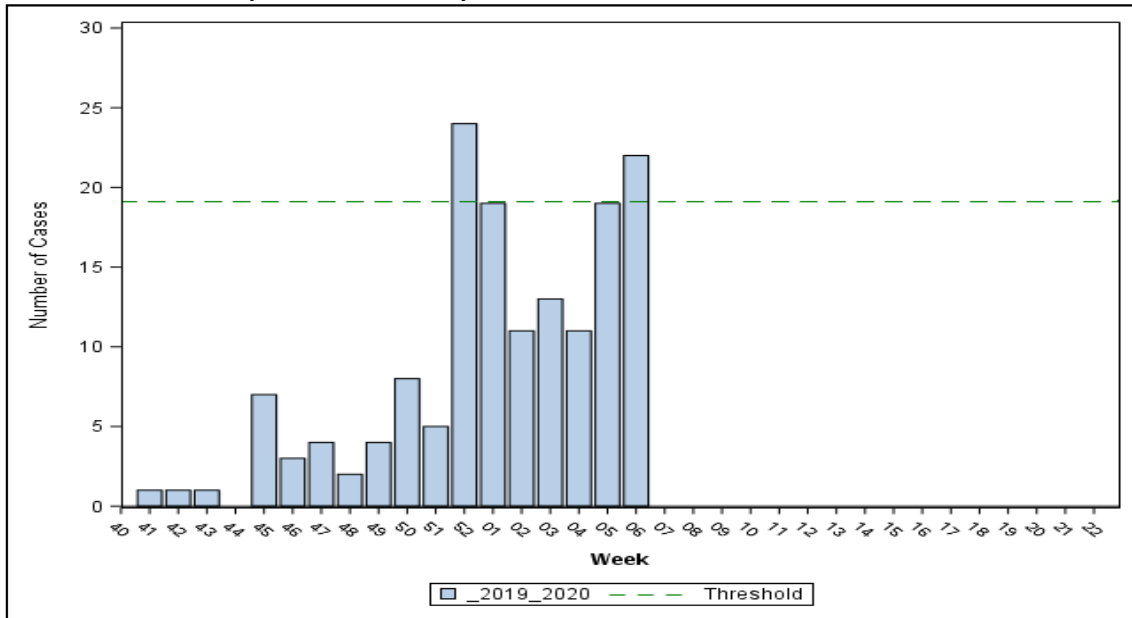
- Dispensed antiviral prescriptions among active component Service Members decreased from a high point during week 05 and remained below the threshold.
- Threshold indicates two standard deviation above the overall weighted average during the season.

Disclaimer: Due to the transition to MHS GENESIS, data are not available from NH Oak Harbor, NH Bremerton, AFMS Fairchild, Madigan AMC, Travis AFB, Presidio of Monterey AB, NAS Lemoore, or Mountain Home AFB. Therefore, these sites are not included in this report.

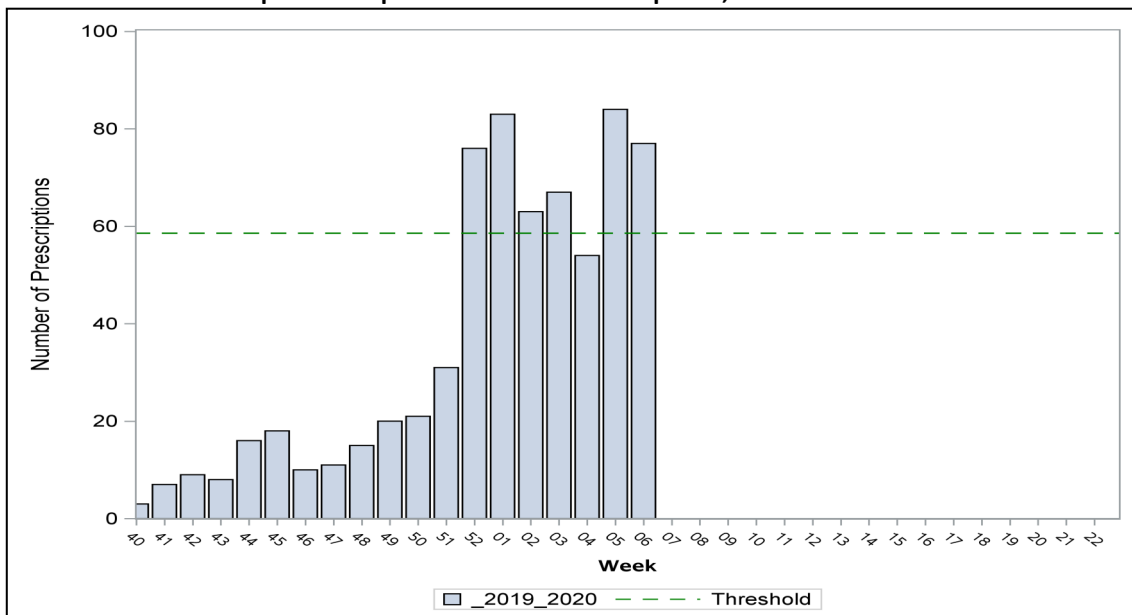
Severity: Hospitalized Influenza Metrics (2019-2020 Season: Week 06)

- Twenty-two new laboratory-confirmed influenza hospitalizations were reported for week 06; 4 Service Members (SM) and 18 other beneficiaries (BN)
 - Twelve influenza A (H1N1): Camp Pendleton (1), NMC San Diego (1), Ft. Gordon (1), JB San Antonio (2), Ft. Hood (1 SM, 2 BN), Portsmouth (4)
 - Eight influenza A (not subtyped): one each at Camp Pendleton, Ft. Carson (SM), Ft. Gordon (SM), Ft. Shafter, WRN-MMC, Keesler AFB, Nellis AFB, Ft. Belvoir
 - Two influenza B: WRNMMC (SM) and JB San Antonio
- There have been 146 laboratory-confirmed influenza hospitalizations this season (14 SM / 132 BN)
- The number of inpatient dispensed antiviral prescriptions remained above threshold for the past 2 weeks.
- Thresholds indicates one standard deviation above the overall weighted average during the season.

Hospitalized Laboratory-Positive Influenza Cases, All Beneficiaries



Inpatient Dispensed Antivirals Prescriptions, All Beneficiaries



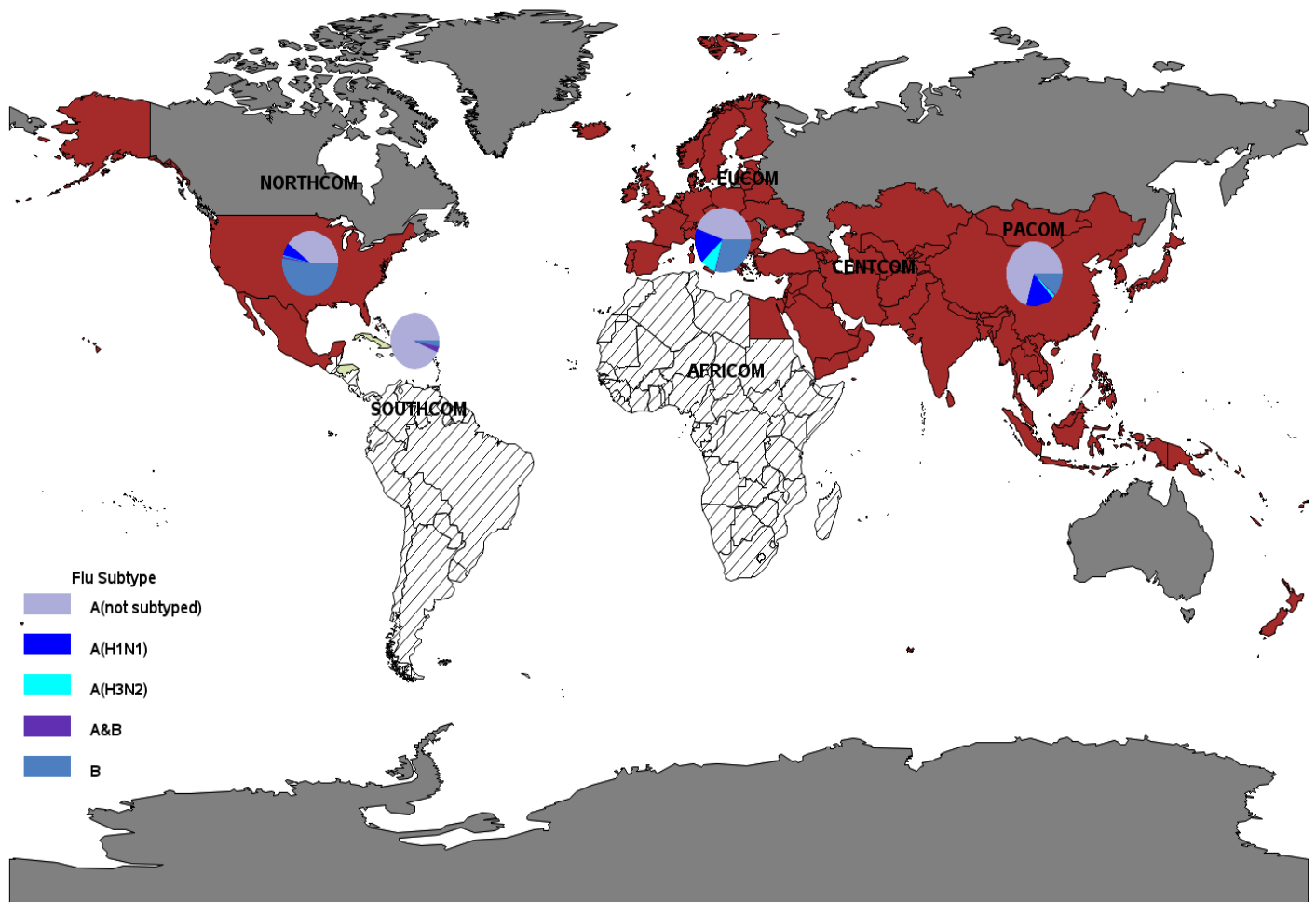
Disclaimer: Due to the transition to MHS GENESIS, data are not available from NH Oak Harbor, NH Bremerton, AFMS Fairchild, Madigan AMC, Travis AFB, Presidio of Monterey AB, NAS Lemoore, or Mountain Home AFB. Therefore, these sites are not included in this report.

Influenza Activity: Geographic Combatant Command

(2019-2020 Season: Week 06)

- NORTHCOM: ILI activity increased to high. Although influenza B continued to predominate over the prior 2 weeks, influenza A, specifically A(H1N1), has been increasing and accounted for nearly half of the positive specimens.
- EUCOM: ILI activity increased to high. Among positive specimens, the majority continued to be influenza A.
- INDO-PACOM: ILI activity remained high. The majority of positive specimens continued to be influenza A. Among subtyped influenza A specimens, the majority were A(H1N1).
- SOUTHCOM: ILI activity remained minimal. The majority of specimens continued to be influenza A (not subtyped).
- CENTCOM: ILI activity increased to high.

ILI Activity (Service Members) and Laboratory-Confirmed Influenza (All Beneficiaries)

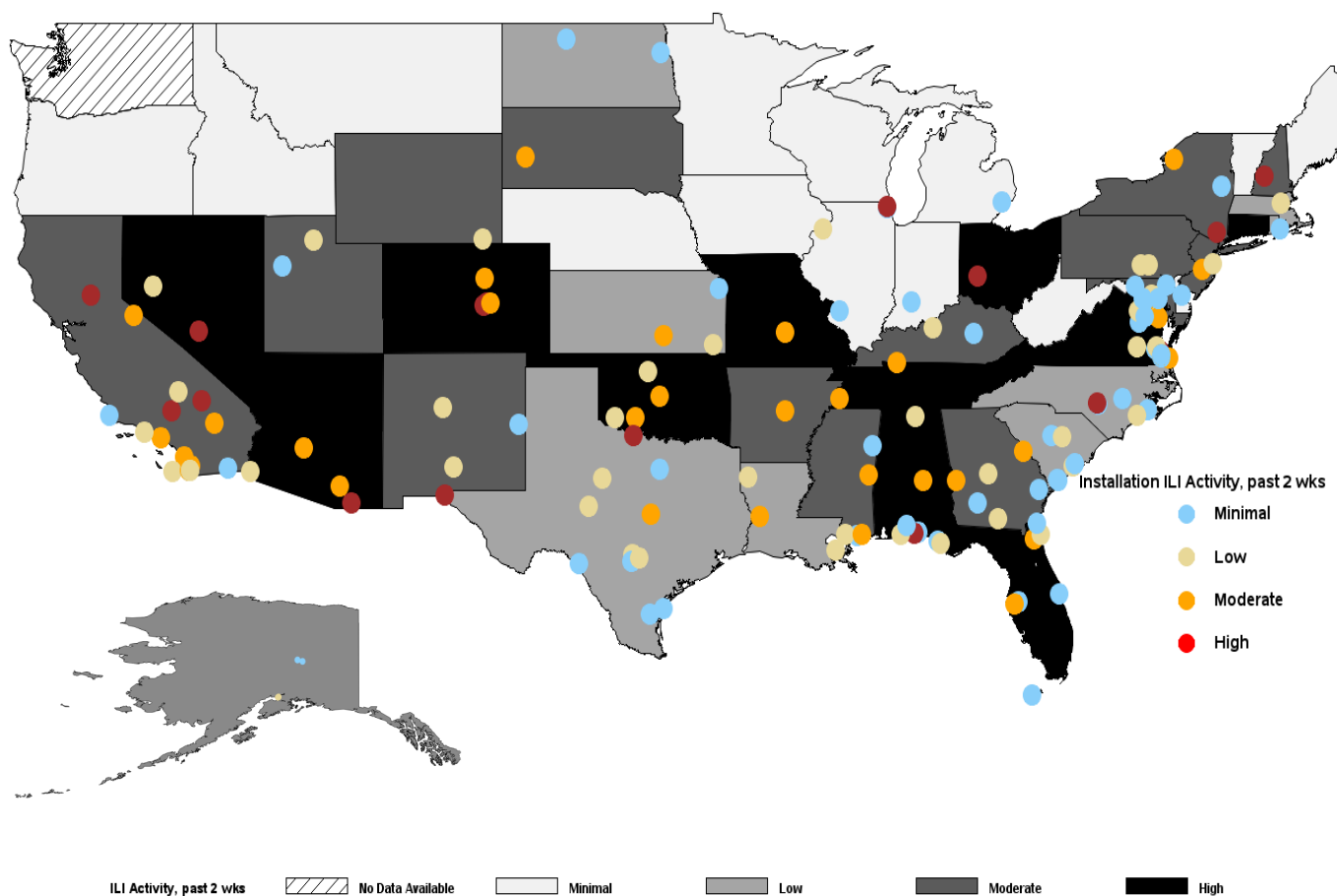


ILI Activity, past 2 wks / / / / No Data Available Minimal Low Moderate High

*Locations colored in dark gray have no Service Member medical encounter data.

Influenza Activity: NORTHCOM (2019-2020 Season: Week 06)

- The majority of installations had low to moderate ILI activity. Forty-two installations had moderate ILI activity and 19 installations had high ILI activity.
- At the state level, ILI activity increased to moderate and high for half of the states, particularly in the southern half of the country.
- State level data includes both Military Treatment Facility (MTF) and outsourced care. Therefore, state activity levels may differ from the installation level data.
- Installation-level laboratory data can be found on pages 11-13 of the report.

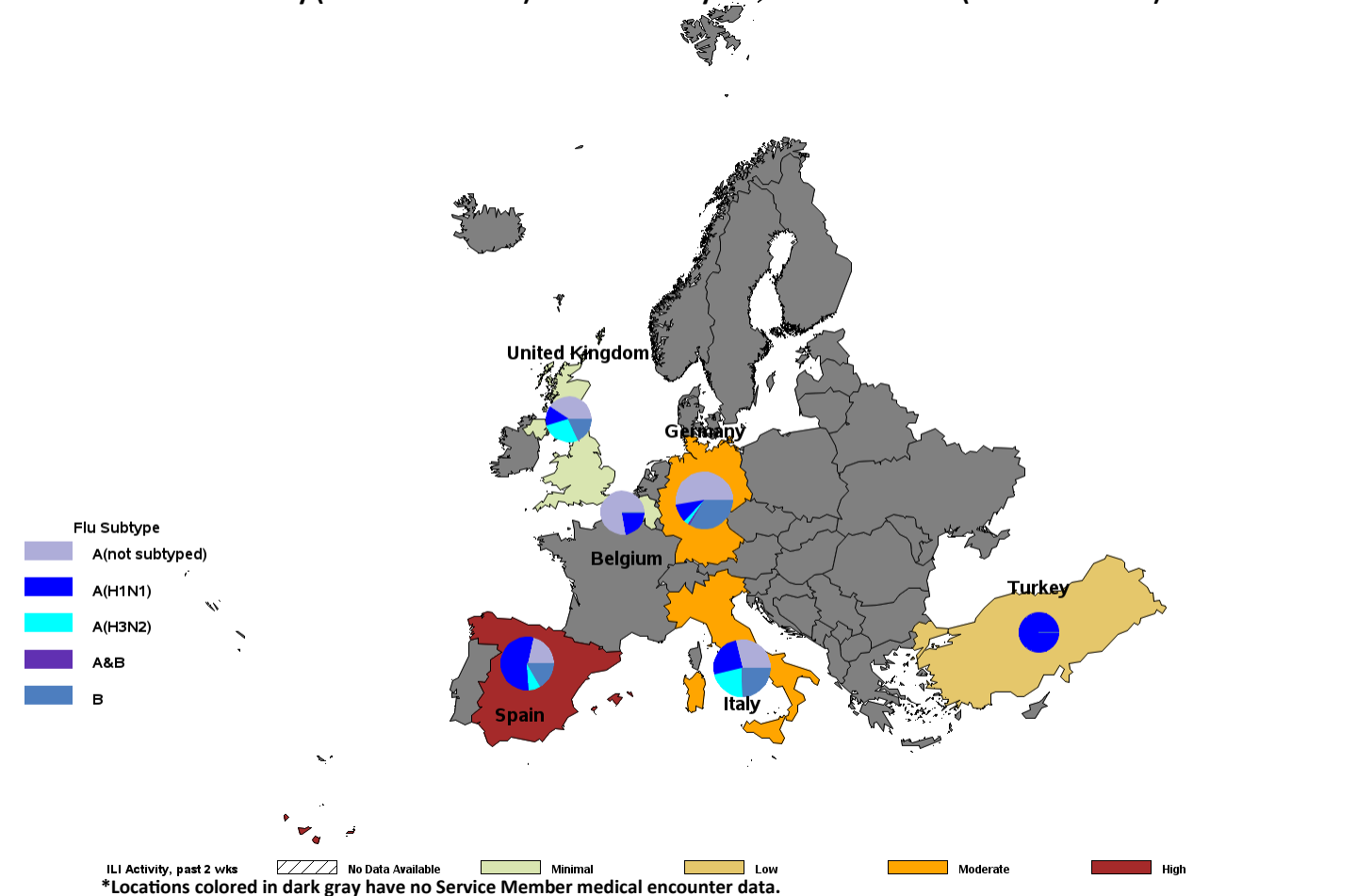


Disclaimer: Due to the transition to MHS GENESIS, data are not available from NH Oak Harbor, NH Bremerton, AFMS Fairchild, Madigan AMC, Travis AFB, Presidio of Monterey AB, NAS Lemoore, or Mountain Home AFB. Therefore, these sites are not included in this report.

Influenza Activity: EUCOM (2019-2020 Season: Week 06)

- ILI activity increased to high in Spain, moderate in Germany and Italy, and remained low in Turkey and minimal in the United Kingdom and Belgium.
- The majority of positive specimens in the past 2 weeks were influenza A. Among subtyped influenza A specimens, the majority have been A(H1N1).

ILI Activity (Service Members) and Laboratory-Confirmed Influenza (All Beneficiaries)

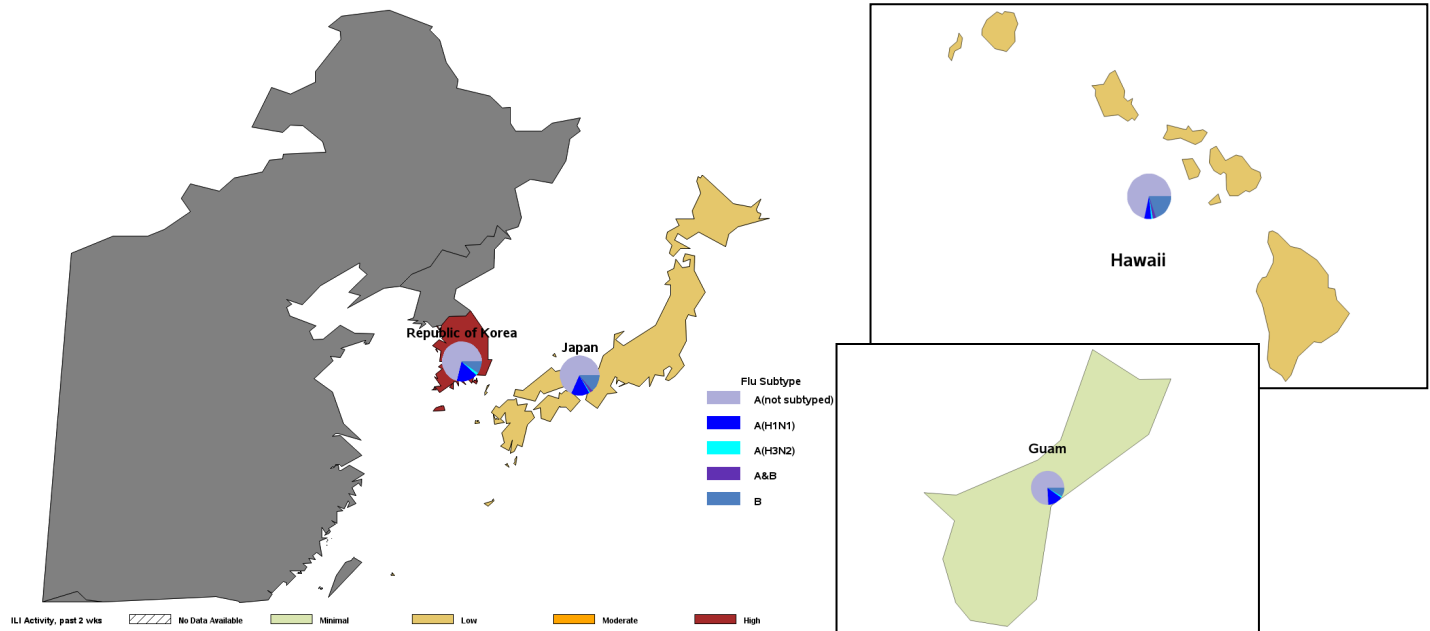


Country	Location	Service	A (not sub-typed)		A (H1N1)		A (H3N2)		A & B		B		Total positive	Total tested	% Positive	Change from last report
			2 wks	Season	2 wks	Season	2 wks	Season	2 wks	Season	2 wks	Season				
Belgium	Shape	A	2	7	2	2	0	0	0	0	0	0	4	17	24	↓
Germany	Barton Barracks	A	0	0	0	0	0	0	0	0	0	0	0	0	0	↔
Germany	Landstuhl RMC	A	51	92	7	11	0	2	0	2	17	37	75	201	37	↓
Germany	Patch Barracks	A	1	1	0	0	0	0	0	0	1	1	2	4	50	↑
Germany	Ramstein AB	F	21	30	0	6	0	0	1	1	2	4	24	56	43	↓
Germany	Spangdahlem AB	F	2	2	0	5	0	0	0	0	0	2	2	9	22	↑
Germany	USAG Bavaria	A	4	6	3	11	5	7	0	0	18	28	30	70	43	↓
Germany	USAG Hohenfels/Amberg	A	4	15	0	0	0	0	0	0	1	18	5	15	33	↓
Germany	USAG Kaiserslautern	A	7	10	0	0	0	0	0	0	1	2	8	19	42	↑
Germany	USAG Katterbach	A	0	9	0	0	0	0	0	0	13	21	13	41	32	↓
Germany	USAG Wiesbaden	A	4	12	0	1	0	0	0	0	0	0	4	13	31	↓
Italy	Aviano AB	F	4	6	1	10	0	10	0	0	1	2	6	25	24	↓
Italy	NAS Sigonella	N	4	6	0	1	0	0	0	0	1	1	5	10	50	↓
Italy	NSA Naples	N	4	12	1	11	0	12	0	0	7	11	12	45	27	↓
Italy	USAG Italy	A	8	14	5	11	3	7	0	0	10	18	26	44	59	↓
Spain	NS Rota	N	6	9	3	23	0	3	0	0	0	7	9	32	28	↓
Turkey	Incirlik AB	F	0	0	0	1	0	0	0	0	0	0	0	7	0	↔
United Kingdom	RAF Alconbury	F	0	0	0	0	0	0	0	0	0	0	0	0	0	↔
United Kingdom	RAF Croughton	F	0	0	0	0	0	1	0	0	0	2	0	0	0	↔
United Kingdom	RAF Lakenheath	F	1	9	1	3	0	5	0	0	0	2	2	26	8	↓

Influenza Activity: INDOPACOM (2019-2020 Season: Week 06)

- ILI activity remained high in the Republic of Korea, low in Japan and Hawaii, and minimal in Guam.
- The majority of positive specimens over the past 2 weeks continued to be influenza A.
- Among subtyped specimens, the majority have been influenza A(H1N1) for the season.

ILI Activity (Service Members) and Laboratory-Confirmed Influenza (All Beneficiaries)



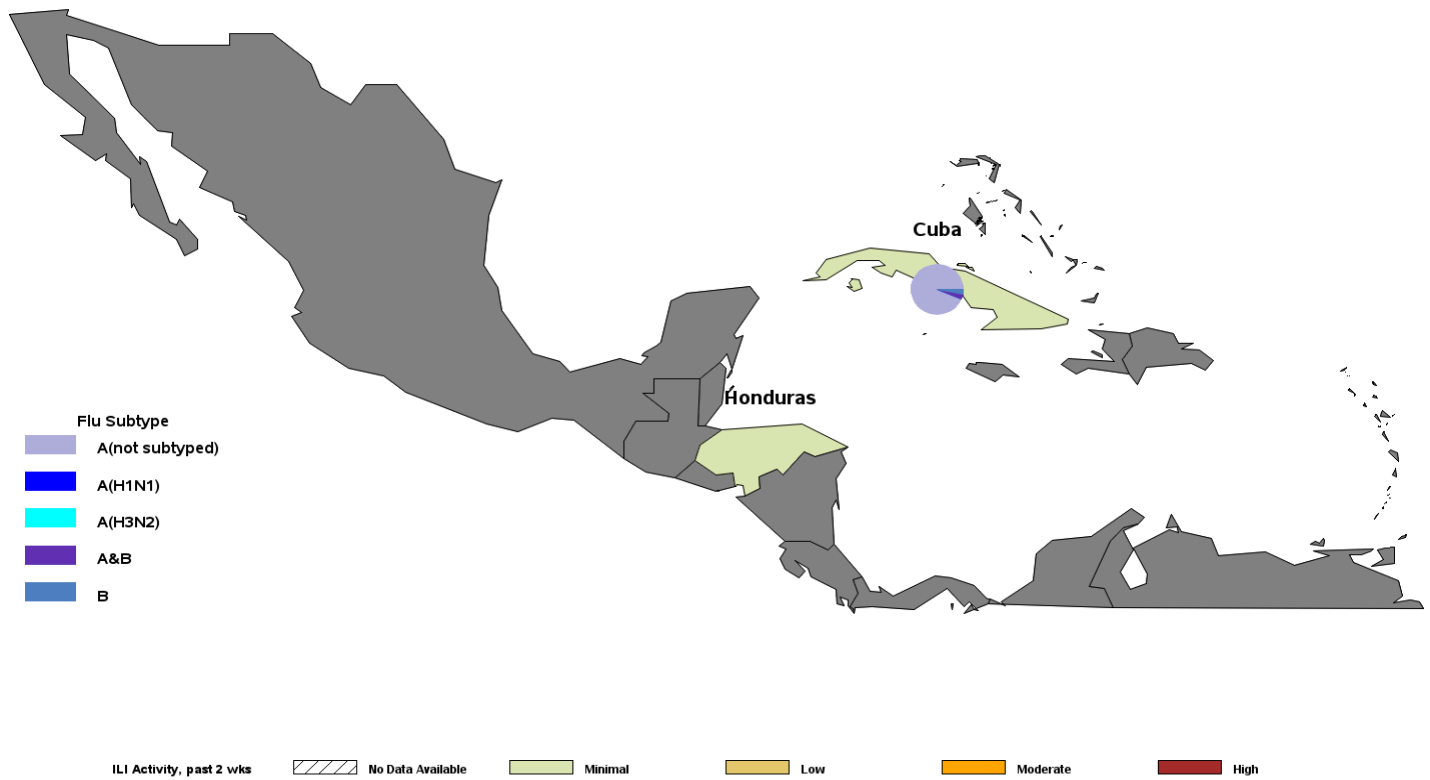
*Locations colored in dark gray have no Service Member medical encounter data.

Country	Location	Service	A (not sub-typed)		A (H1N1)		A (H3N2)		A & B		B		Total positive 2 wks	Total tested 2 wks	% Positive 2 wks	Change from last report
			2 wks	Season	2 wks	Season	2 wks	Season	2 wks	Season	2 wks	Season				
Guam	JB Andersen	J	12	103	0	20	0	2	0	0	1	11	13	58	22	↓
Japan	CFA Okinawa	N	0	21	0	0	0	0	0	0	1	10	1	21	5	↑
Japan	CFA Yokosuka	N	9	55	0	0	0	0	0	2	1	2	10	55	18	↓
Japan	Camp Foster	N	0	2	0	0	0	0	0	0	0	0	0	5	0	↔
Japan	Camp Fuji	N	0	0	0	0	0	0	0	0	0	0	0	0	0	↔
Japan	Camp Zama	A	4	18	0	0	0	0	2	3	7	12	13	32	41	↑
Japan	Kadena AB	F	1	4	1	5	0	1	0	0	0	2	2	13	15	↓
Japan	MCAS Futenma	N	0	3	0	0	0	0	0	0	0	0	0	2	0	↔
Japan	MCAS Iwakuni	N	0	24	0	0	0	0	0	1	0	2	0	3	0	↔
Japan	Misawa AB	F	7	16	0	0	0	0	0	1	0	3	7	23	30	↑
Japan	NAF Atsugi	N	3	8	0	0	0	0	0	0	3	4	6	17	35	↓
Japan	NB Okinawa	N	2	41	0	0	0	0	0	0	0	3	2	54	4	↑
Japan	USFA Sasebo	N	0	2	0	0	0	0	0	0	0	0	0	3	0	↔
Japan	Yokota AB	F	0	18	0	42	0	0	0	1	0	3	0	8	0	↔
Korea, Republic of	CFA Chinhae	N	0	0	0	0	0	0	0	0	0	0	0	0	0	↔
Korea, Republic of	Camp Casey	A	1	4	0	0	0	0	0	0	0	0	1	7	14	↓
Korea, Republic of	Camp Humphreys	A	10	61	0	0	0	0	0	0	0	1	10	72	14	↓
Korea, Republic of	Camp Walker	A	0	17	0	0	0	0	0	0	0	2	0	7	0	↔
Korea, Republic of	Kunsan AB	F	1	1	0	2	0	1	0	0	0	0	1	4	25	↓
Korea, Republic of	Osan AB	F	9	29	0	51	0	6	0	0	2	7	11	45	24	↓
Korea, Republic of	Yongsan Garrison	A	18	107	0	1	0	0	0	0	1	18	19	110	17	↓
United States	Camp H M Smith	N	0	0	0	0	0	0	0	0	0	0	0	0	0	↔
United States	Ft Shafter	A	60	183	1	22	0	4	1	8	11	49	73	196	37	↓
United States	JB Pearl Harbor-Hickam	J	21	65	0	1	0	0	2	2	5	15	28	55	51	↑
United States	MCB Hawaii	N	8	17	0	1	0	0	0	0	1	5	9	21	43	↑
United States	Schofield Barracks	A	14	53	0	0	0	0	0	1	4	19	18	62	29	↓

Influenza Activity: SOUTHCOM (2019-2020 Season: Week 06)

- ILI activity remained minimal in Cuba and Honduras.
- The majority of positive specimens continued to be Influenza A.

ILI Activity (Service Members) and Laboratory-Confirmed Influenza (All Beneficiaries)

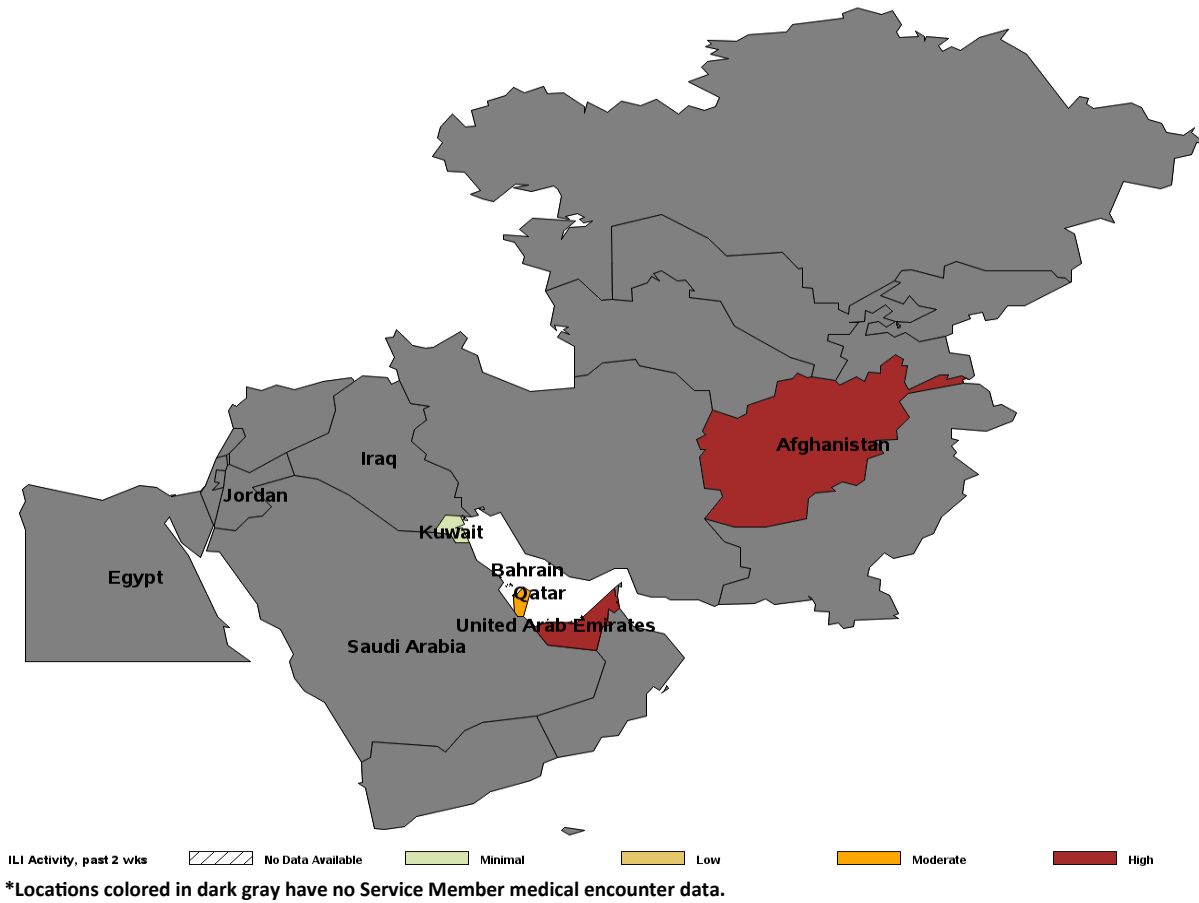


Country	Location	Service	A (not sub-typed)		A (H1N1)		A (H3N2)		A & B		B		Total positive	Total tested	% Positive	Change from last report
			2 wks	Season	2 wks	Season	2 wks	Season	2 wks	Season	2 wks	Season				
Cuba	Guantanamo Bay	N	0	31	0	0	0	0	0	1	0	1	1	6	17	↑

Influenza Activity: CENTCOM (2019-2020 Season: Week 06)

- ILI activity was high in Afghanistan and the United Arab Emirates, moderate in Qatar, and minimal in Kuwait and Bahrain.

ILI Activity (Service Members)



NORTHCOM Laboratory-Confirmed Influenza

(2019-2020 Season: Week 06)

Laboratory-Confirmed Influenza (All Beneficiaries) by Installation Alaska through Georgia

State	Location	Service	A (not subtyped)		A (H1N1)		A (H3N2)		A & B		B		Total positive	Total tested	% Positive	Change from last report
			2 wks	Season	2 wks	Season	2 wks	Season	2 wks	Season	2 wks	Season	2 wks	Season	2 wks	
AK	Eielson AFB	F	0	0	0	0	0	0	0	0	5	15	5	17	29	↓
AK	Ft Greely	A	0	0	0	0	0	0	0	0	4	4	4	11	36	↑
AK	Ft Wainwright	A	21	66	5	14	0	0	0	0	28	124	54	177	31	↓
AK	JB Elmendorf-Richardson	J	22	49	0	7	0	3	0	0	30	154	52	160	33	↓
AL	Ft Rucker	A	17	35	0	0	0	0	0	0	2	63	19	96	20	↑
AL	Maxwell AFB	F	26	44	4	13	0	0	0	2	6	32	36	119	30	↑
AL	Redstone Arsenal	A	15	28	0	0	0	0	0	0	12	45	27	91	30	↑
AR	Little Rock AFB	F	2	3	7	20	0	0	0	0	9	24	18	56	32	↓
AZ	Davis-Monthan AFB	F	4	4	9	14	0	0	0	0	6	19	19	42	45	↓
AZ	Ft Huachuca	A	34	47	2	4	0	0	0	0	23	41	59	147	40	↓
AZ	Luke AFB	F	10	22	3	9	0	1	0	2	6	45	19	62	31	↔
AZ	MCAS Yuma	N	0	0	1	2	0	0	0	0	0	7	1	1	100	↓
CA	Beale AFB	F	15	26	0	0	0	0	0	0	4	14	19	63	30	↓
CA	Camp Pendleton	N	22	122	26	93	2	18	0	3	23	239	73	210	35	↑
CA	Edwards AFB	F	6	10	0	0	0	0	0	0	1	6	7	27	26	↓
CA	Ft Irwin	A	52	96	0	0	0	0	0	0	9	83	61	233	26	↑
CA	Los Angeles AFB	F	0	1	0	0	0	0	0	0	0	3	0	3	0	↔
CA	MBHC Eastlake	N	0	0	1	9	0	0	0	0	0	4	1	3	33	↓
CA	NAF El Centro	N	0	0	0	3	0	0	0	0	0	0	0	2	0	↔
CA	NB Coronado	N	0	0	2	3	0	0	0	0	1	3	3	8	38	↓
CA	NB San Diego	N	5	18	80	254	3	20	0	9	27	206	115	438	26	↓
CA	NV Ventura County	N	0	0	0	0	0	0	0	0	0	2	0	0	0	↔
CA	Twentynine Palms	N	25	78	0	1	0	0	0	0	7	161	32	181	18	↓
CA	Vandenberg AFB	F	2	14	0	0	0	0	0	1	1	3	3	11	27	↓
CO	Buckley AFB	F	2	15	0	0	0	0	0	0	5	20	7	30	23	↑
CO	Ft Carson	A	131	265	0	0	0	0	0	3	60	419	191	605	32	↑
CO	Peterson AFB	F	13	19	6	18	0	2	0	0	6	42	25	51	49	↓
CO	Schriever AFB	F	1	1	1	4	0	0	0	0	1	8	3	10	30	↑
CO	USAF Academy	F	11	31	3	7	0	1	0	1	12	56	26	84	31	↑
CT	NSB New London	N	4	9	0	0	0	0	0	1	15	28	19	61	31	↓
DC	JB Anacostia-Bolling	F	0	1	0	1	0	0	0	0	0	6	0	5	0	↔
DC	Pentagon	J	23	32	0	0	0	0	0	0	2	7	25	58	43	↓
DC	Washington Navy Yard	N	3	3	0	0	0	0	0	0	4	6	7	18	39	↓
DE	Dover AFB	F	5	6	6	13	0	0	1	1	9	25	21	60	35	↑
FL	Eglin AFB	J	43	126	19	36	0	1	0	1	12	67	74	183	40	↓
FL	Hurlburt Field	F	10	15	0	0	0	0	1	1	0	10	11	41	27	↑
FL	Macdill AFB	F	56	97	0	2	1	2	0	0	12	96	69	180	38	↓
FL	NAS Jacksonville	J	67	270	1	1	0	0	0	1	33	196	101	313	32	↓
FL	NAS Key West	J	0	8	0	0	0	0	0	0	1	2	1	3	33	↑
FL	NAS Pensacola	N	48	164	0	0	0	0	0	2	20	209	68	293	23	↓
FL	NAS Whiting Field	N	2	7	0	0	0	0	0	0	3	11	5	15	33	↓
FL	NS Mayport	J	7	37	0	0	0	0	1	1	3	32	11	42	26	↓
FL	Patrick AFB	F	9	32	0	0	0	0	0	1	3	34	12	61	20	↓
FL	Tyndall AFB	F	1	3	0	0	0	0	0	1	0	7	1	8	13	↑
GA	Ft Benning	A	126	394	0	0	2	1	6	63	296	190	640	30	↓	
GA	Ft Gordon	A	102	192	1	1	0	0	0	2	11	109	114	373	31	↑
GA	Ft Stewart	A	93	182	0	0	0	0	2	4	20	127	115	325	35	↓
GA	Hunter Army Airfield	A	6	13	0	0	0	0	0	0	2	23	8	40	20	↓
GA	Moody AFB	F	4	8	6	17	0	0	0	0	2	9	12	33	36	↓
GA	NAS Albany	J	0	7	0	0	0	0	0	0	0	14	0	12	0	↔
GA	NSB Kings Bay	J	10	21	0	0	0	0	0	1	7	14	17	41	41	↓
GA	Robins AFB	F	0	2	2	19	0	0	0	0	0	9	2	6	33	↓

Disclaimer: Due to the transition to MHS GENESIS, data are not available from NH Oak Harbor, NH Bremerton, AFMS Fairchild, Madigan AMC, Travis AFB, Presidio of Monterey AB, NAS Lemoore, or Mountain Home AFB. Therefore, these sites are not included in this report.

NORTHCOM Laboratory-Confirmed Influenza

(2019-2020 Season: Week 06)

Laboratory-Confirmed Influenza (All Beneficiaries) by Installation Illinois through New York

State	Location	Service	A (not subtyped)		A (H1N1)		A (H3N2)		A & B		B		Total posi- tive	Total tested	% Positive	Change from last report
			2 wks	Season	2 wks	Season	2 wks	Season	2 wks	Season	2 wks	Season	2 wks	Season	2 wks	
IL	NS Great Lakes	N	104	177	2	4	0	1	0	2	41	297	147	357	41	↓
IL	Scott AFB	F	8	8	8	20	0	0	0	1	15	25	31	81	38	↓
KS	Ft Leavenworth	A	21	54	0	0	0	0	0	0	37	58	58	134	43	↓
KS	Ft Riley	A	32	95	0	2	0	0	1	1	62	189	95	331	29	↑
KS	Mcconnell AFB	F	0	1	2	5	0	0	0	0	2	8	4	13	31	↓
KY	Ft Campbell	A	105	233	3	4	0	0	0	0	42	216	150	502	30	↔
KY	Ft Knox	A	7	19	0	0	0	0	0	0	2	5	9	13	69	↓
LA	Barksdale AFB	F	11	21	0	0	0	0	0	0	3	10	14	52	27	↓
LA	Ft Polk	A	17	71	0	0	0	0	0	2	27	109	44	166	27	↑
LA	NAS Belle Chase	N	1	4	0	0	0	0	0	0	1	3	2	5	40	↑
MA	Hanscom AFB	F	1	1	3	5	0	0	1	1	2	6	7	17	41	↓
MD	Aberdeen Proving Ground	A	10	21	0	0	0	0	0	0	8	21	18	48	38	↑
MD	Ft Detrick	A	7	17	0	0	0	0	0	0	12	35	19	67	28	↓
MD	Ft Meade	A	8	20	0	0	0	0	0	0	11	33	19	64	30	↑
MD	JB Andrews	F	44	113	0	0	0	1	1	5	25	151	70	207	34	↓
MD	NAS Patuxent River	N	16	27	0	0	0	0	0	2	20	38	36	114	32	↑
MD	NBHC Bancroft Hall	N	17	56	1	2	0	0	1	2	14	36	33	103	32	↓
MD	NHC Annapolis	N	19	42	0	0	0	0	1	2	9	17	29	62	47	↑
MD	NSF Indian Head	N	0	1	0	0	0	0	0	0	2	10	2	8	25	↑
MD	WRNMMC	J	85	193	3	9	0	1	0	2	57	286	145	398	36	↑
MO	Ft Leonard Wood	A	13	44	0	2	0	2	0	0	72	164	85	291	29	↑
MO	Whiteman AFB	F	14	18	0	0	0	0	0	0	13	22	27	69	39	↓
MS	Columbus AFB	F	3	5	0	0	0	0	0	0	1	7	4	14	29	↑
MS	Keesler AFB	J	57	121	0	2	0	0	0	0	14	173	71	219	32	↓
MS	NAS Meridian	N	9	15	0	0	0	0	0	0	1	6	10	17	59	↑
MS	NBHC Gulfport	N	10	16	0	0	0	0	0	0	3	24	13	33	39	↑
MT	Malmstrom AFB	F	1	2	0	0	0	0	0	0	0	2	1	8	13	↑
NC	Camp Lejeune	N	83	305	3	5	0	1	0	0	44	145	130	351	37	↑
NC	Ft Bragg	J	3	10	0	2	0	0	0	2	2	9	5	1029	0	↓
NC	MCAS Cherry Point	N	21	34	0	0	0	0	0	0	9	35	30	68	44	↓
NC	Pope Army Airfield	J	0	0	0	0	0	0	5	5	0	0	5	162	3	↑
NC	Seymour Johnson AFB	J	1	2	5	8	0	1	1	1	2	7	9	27	33	↓
ND	Grand Forks AFB	F	0	0	0	0	0	0	0	0	1	7	1	2	50	↓
ND	Minot AFB	F	1	2	0	2	0	0	0	0	7	24	8	25	32	↓
NE	Offutt AFB	F	0	4	2	21	0	0	0	0	2	7	4	8	50	↑
NH	Portsmouth	N	6	9	0	0	0	0	0	0	4	8	10	33	30	↑
NJ	JB McGuire-Dix-Lakehurst	F	3	5	3	6	0	1	0	0	10	21	16	37	43	↓
NM	Cannon AFB	F	0	1	0	2	0	0	0	0	1	3	1	1	100	↓
NM	Holloman AFB	F	5	10	0	0	0	0	1	5	15	10	36	28	↓	
NM	Kirtland AFB	F	3	10	0	5	0	2	0	0	1	13	4	31	13	↑
NM	White Sands Missile Range	A	5	8	0	0	0	0	0	0	1	4	6	20	30	↑
NV	Nellis AFB	F	45	146	4	34	1	5	0	0	6	195	56	139	40	↑
NY	Ft Drum	A	23	24	0	6	0	5	0	0	27	75	50	142	35	↓
NY	West Point	A	16	25	56	81	1	6	1	1	101	154	175	355	49	↓

Disclaimer: Due to the transition to MHS GENESIS, data are not available from NH Oak Harbor, NH Bremerton, AFMS Fairchild, Madigan AMC, Travis AFB, Presidio of Monterey AB, NAS Lemoore, or Mountain Home AFB. Therefore, these sites are not included in this report.

NORTHCOM Laboratory-Confirmed Influenza

(2019-2020 Season: Week 06)

Laboratory-Confirmed Influenza (All Beneficiaries) by Installation Ohio through Wyoming

State	Location	Service	A (not subtyped)		A (H1N1)		A (H3N2)		A & B		B		Total positive	Total tested	% Positive	Change from last report
			2 wks	Season	2 wks	Season	2 wks	Season	2 wks	Season	2 wks	Season	2 wks	2 wks	2 wks	
OH	Wright-Patterson AFB	F	9	15	59	127	0	3	0	2	65	165	133	321	41	↑
OK	Altus AFB	F	0	0	5	9	0	0	0	0	10	22	15	48	31	↓
OK	Ft Sill	A	30	103	1	2	0	0	1	3	55	169	87	261	33	↓
OK	Tinker AFB	F	6	7	11	29	0	0	0	1	8	44	25	62	40	↓
OK	Vance AFB	F	2	4	3	7	0	0	0	1	0	6	5	16	31	↓
PA	Carlisle Barracks	A	4	8	0	0	0	0	0	0	12	25	16	44	36	↓
PR	Ft Buchanan	A	6	12	0	0	0	0	0	0	1	13	7	23	30	↓
PR	NS Roosevelt Roads	N	0	2	0	0	0	0	0	0	0	0	0	0	0	↔
RI	NHC New England	N	12	17	0	3	0	0	0	0	4	6	16	39	41	↑
SC	Ft Jackson	A	59	130	0	0	0	0	0	0	48	151	107	309	35	↑
SC	JB Charleston	J	16	46	2	4	0	0	1	1	12	52	31	112	28	↓
SC	MCAS Beaufort	N	1	8	1	4	0	1	0	0	4	12	6	48	13	↓
SC	Parris Island	N	17	27	1	1	0	0	1	1	2	50	21	97	22	↓
SC	Shaw AFB	F	17	21	1	15	1	3	0	1	11	40	30	73	41	↓
SD	Ellsworth AFB	F	3	4	3	9	0	0	0	0	8	29	14	56	25	↓
TN	Ft Campbell	A	27	61	0	2	0	1	0	0	19	64	46	141	33	↓
TN	NSA Mid-South	N	5	14	0	0	0	0	0	0	3	5	8	37	22	↓
TX	Dyess AFB	F	19	27	0	0	0	0	0	2	4	18	23	54	43	↓
TX	Ft Bliss	A	126	419	3	79	0	6	0	4	120	755	249	827	30	↓
TX	Ft Hood	A	250	504	6	16	0	0	1	4	16	1150	273	898	30	↑
TX	Goodfellow AFB	F	12	17	0	0	0	0	0	1	1	22	13	67	19	↓
TX	JB San Antonio	J	370	1030	34	173	3	8	3	18	145	902	555	1379	40	↓
TX	Laughlin AFB	F	4	8	0	2	0	0	1	1	5	12	10	20	50	↓
TX	NAS Corpus Christi	N	2	5	0	0	0	0	0	0	1	3	3	3	100	↓
TX	NAS JRB Fort Worth	N	0	0	0	0	0	0	0	0	1	1	1	1	100	↓
TX	NAS Kingsville	N	0	0	0	0	0	0	0	0	1	1	1	1	100	↓
TX	Sheppard AFB	F	11	17	5	16	0	0	0	1	5	30	21	73	29	↑
UT	Hill AFB	F	6	8	10	18	0	0	0	0	5	17	21	42	50	↓
VA	Ft Belvoir	J	187	357	0	0	0	0	1	5	97	464	285	692	41	↑
VA	Ft Lee	A	16	38	0	0	0	0	2	4	33	82	51	185	28	↑
VA	JB Langley-Eustis	J	31	65	8	18	1	3	0	1	34	112	74	183	40	↓
VA	JB Little Creek-Ft Story	J	1	2	0	0	0	0	0	0	0	0	1	7	14	↑
VA	JB Myer-Henderson Hall	A	8	14	0	0	0	0	1	1	6	20	15	33	45	↓
VA	MCB Quantico	N	30	45	0	0	0	0	1	1	25	71	56	150	37	↓
VA	NAS Oceana	N	3	6	0	0	0	0	0	0	1	10	4	19	21	↑
VA	NB Dam Neck	N	1	2	0	0	0	0	0	1	1	2	8	25	25	↓
VA	NS Norfolk	N	5	6	0	0	0	0	0	0	2	6	7	23	30	↑
VA	NWS Dahlgren	N	0	0	0	0	0	0	0	0	0	0	0	6	0	↔
VA	NWS Yorktown	N	1	2	0	0	0	0	0	0	0	3	1	9	11	↑
VA	Portsmouth	N	20	34	30	71	0	4	0	0	9	148	59	149	40	↓
VA	TPC Suffolk	N	0	0	0	0	0	0	0	0	0	2	0	5	0	↔
WY	FE Warren AFB	F	7	15	0	2	0	0	0	0	10	26	17	81	21	↑

Disclaimer: Due to the transition to MHS GENESIS, data are not available from NH Oak Harbor, NH Bremerton, AFMS Fairchild, Madigan AMC, Travis AFB, Presidio of Monterey AB, NAS Lemoore, or Mountain Home AFB. Therefore, these sites are not included in this report.

Surveillance Programs and Data Sources

Defense Health Agency / Armed Forces Health Surveillance Branch (AFHSB):

The Armed Forces Health Surveillance Branch (AFHSB) is the central epidemiologic resource for the U.S. Armed Forces, conducting medical surveillance to protect those who serve our nation in uniform and allies who are critical to our national security interests. The Epidemiology and Analysis Section of AFHSB, the Epi Data Center of the Navy and Marine Corps Public Health Center, and the Air Force Satellite Office in Dayton, Ohio (Wright-Patterson AFB) have compiled data for this report from the following sources below.

Influenza-like Illness Activity:

Medical encounter and demographic data from the AFHSB's Defense Medical Surveillance System (DMSS) are used to generate portions of this report. ICD-10 codes from outpatient encounters are used to identify influenza-like illness (ILI). ILI is defined using the following codes: B97.89, H66.9, H66.90, H66.91, H66.92, H66.93, J00, J01.9, J01.90, J06.9, J09, J09.X, J09.X1, J09.X2, J09.X3, J09.X9, J10, J10.0, J10.00, J10.01, J10.08, J10.1, J10.2, J10.8, J10.81, J10.82, J10.83, J10.89, J11, J11.0, J11.00, J11.08, J11.1, J11.2, J11.8, J11.81, J11.82, J11.83, J11.89, J12.89, J12.9, J18, J18.1, J18.8, J18.9, J20.9, J40, R05, R50.9.

The percentage of all outpatient visits that have an ILI code is calculated each week for all service members, regardless of component. These data are presented weekly for the current season and compared to the four prior seasons among service members. Influenza activity levels are calculated by comparing the mean reported percent of visits due to ILI for the previous two weeks to the mean reported percent of visits due to ILI during baseline weeks (defined as non-influenza weeks (weeks 22-39) over the past 3 years). There are four influenza activity levels, minimal, low, moderate, and high. The activity level corresponds to the number of standard deviations (SD) below, at or above the mean for the current 2 week period compared to the mean of the baseline weeks. Minimal activity corresponds to an influenza percentage that is less than 2 SD above the mean. Low activity corresponds to an influenza percentage that is equal to or greater than 2 SD above the mean, but less than 4 SD above the mean. Moderate activity corresponds to an influenza percentage that is equal to or greater than 4 SD above the mean, but less than 6 SD above the mean. High activity corresponds to an influenza percentage that is equal to or greater than 6 SD above the mean.

Influenza activity levels are presented in the Combatant Command (CCMD) maps, either by Installation, state, or country.

Influenza Positive Specimens:

Influenza lab results (HL-7 formatted data) are compiled and transmitted from the Navy and Marine Corps Public Health Center to AFHSB. Results obtained via PCR, viral culture, and rapid influenza assays are reported. Although the inclusion of rapid tests may underestimate the weekly and cumulative percent positive estimates due to false negatives, visibility of the positive rapid results provides valuable information for this surveillance report. Influenza types/subtypes are categorized as influenza A/not subtyped, influenza A(H1N1), influenza A(H3N2), influenza A and B co-infection, and influenza B. Additionally, laboratory-confirmed positive results are used to identify influenza-related hospitalization cases across the DoD.

The percent positivity is calculated by dividing the number of influenza positive specimens by the total number of specimens (positive and negative only; inconclusive results are excluded). The distributions of percent positive specimens by subtype are presented on a weekly basis for the entire influenza season. For each CCMD state, the distribution of subtypes for the previous 2 weeks are presented as pie graphs for states and countries. For installations, data are presented in tables with counts and percent positive by subtype for the past 2 weeks and for the entire season. The "change from last report" column reports the absolute difference in the percent positive from the prior week's report to the current week's report.

Surveillance Programs and Data Sources

Pharmacy Transactions for Dispensed Antiviral Prescriptions:

HL7-formatted pharmacy transactions are used to assess the number of dispensed influenza antiviral (AV) prescriptions. Four influenza AV medications approved by the Food and Drug Administration (FDA) are recommended by the CDC for use in the United States (US) for the 2019-2020 influenza season: oral oseltamivir (Tamiflu® or generic), inhaled zanamivir (Relenza®), and intravenous peramivir (Rapivab®), and baloxavir marboxil (Xofluza®). These prescriptions are included in this surveillance. The overall count of dispensed AV prescriptions by week is presented graphically for the influenza season. A seasonal baseline is displayed with dispensed AV prescriptions. Surveillance thresholds are displayed with the count of inpatient dispensed AV prescriptions. Additionally, counts of inpatient dispensed influenza AV prescriptions are presented weekly for the influenza season.

Baselines, Thresholds, and Trends:

Weekly baselines used a three-year average to compare results with those from the same week during the previous three seasons. Bands for one and two standard deviations above seasonal baseline estimates are displayed to indicate when trends diverge with respect to timing or volume from those of recent seasons. The ILI, lab, and dispensed AV prescription data thresholds are calculated by adding two standard deviations to the off-season average.

Inpatient thresholds (lab and dispensed AV prescription data) are calculated by adding one standard deviation to the overall weighted average for in-season weeks. Weeks that represent at least 2% of the total season's laboratory-positive influenza cases for at least two consecutive weeks was considered to be "in-season" or influenza weeks; all other weeks are considered to be "off-season" or non-influenza weeks.

Links to Service-Specific Influenza Reports:

Select the following links to see service-specific influenza surveillance weekly reports:

- Navy and Marine Corps Public Health Center (NMCPHC):
<https://www.med.navy.mil/sites/nmcphc/epi-data-center/influenza/Pages/default.aspx>
- United States Air Force School of Aerospace Medicine (USAFSAM)/Defense Health Agency (DHA):
<https://hpws.af.mil/epi-consult/influenza/ActivityUpdates.cfm>