



42nd Medical Group Maxwell Volume II

Table of Contents

Part	Page
A. Data Call	3
B. Relevant Section 703 Report Detail	7
C. DHA TRICARE Health Plan Network Review	8
D. Network Insight Assessment Summary (Independent Government Assessment)	13
E. P4I Measures	29
F. JOES-C 12-month Rolling Data	46
G. Base Mission Brief	42
H. MTF Mission Brief	61
I. Air University Brief	98
J. MTF Portfolio (Full)	110

Part A: 42nd MEDGRP Data Call (1 of 4)

Installation

Installation Name	MTF DMIS ID	Affiliated Location Name	Affiliated Location DMIS ID	Installation Mission	Medical Units assigned to mission
Maxwell	0004	42 MDG	N/A	Installation occ/env health prgm	42 AMDS
Maxwell	0004	42 MDG	N/A	Biomedical Support	42 AMDS
Maxwell	0004	42 MDG	N/A	food safety	42 AMDS
Maxwell	0004	42 MDG	N/A	inflight emergency response	42 AMDS
Maxwell	0004	908 AW	N/A	Airlift	908 ASTS/AES, 42 MDG provides backup Medical Support, Public Health, Optometry, Logistics Support
Maxwell	0004	Ft. Benning Vet Clinic	N/A	Pharmacy, BMET, Logistics	42 MDSS, Controlled Meds Management, Medical Equipment Maintenance, Facility Support
Maxwell	0004	AU	N/A	Officer Professional Develop	42 MDG, Patient care, Special Events Medical Support
Maxwell	0004	HQ AFROTC	N/A	Officer Accessions	42 MDG, Staffing Backfill, Credentialing, Ambulance,
Maxwell	0004	TFOT	N/A	Officer Accessions	42 MDG, Immuizations, Lab, BMET
Maxwell	0004	CAVHS	N/A	VA Podiatry	42 MDG, Credentialing, Medical Logistics
Maxwell	0004	Maxwell Federal Prison Camp	N/A	Inmate rehabilitation	42 MDG, Contract Ambulance

Part A: 42nd MEDGRP Data Call (2 of 4)

Line Mission Elements

Line Units Served	Unit Mission	Personnel Assigned				Personnel Assigned			
		Officer	Enlisted	RC	CIV	Officer	Enlisted	RC	CIV
42 nd Air Base Wing	Installation Support	83	464	36	1,148	55	113		82
Air University	Officer Development (AWC, ACSC, SOS, OTS, SNCOA)	599	389	56	863	1	4		
Air University	Must See Non-Empaneled Students (SNCOA, OTS, ROTC, SOS)	10,000	1,200	--	--				
HQ AFROTC	Officer Accessions	--	--	--	--			12	
908 th AW (Res)	C-130/Airlift	0	1,000	996	198			219	11
187 th FW (Guard)	F-16/RC-26	0	200	1,068	268	14	26		7
99 ARW (Birmingham)	KC-135/Refueling	18	107	0	1	1			
LCMC	Lifecycle Management Center/Network ops	79	343	3	677				
331 Recruiting Sq	Officer & Enlisted recruitment	5	20	0	2				
26 NOS	Network Ops	14	91	4	66				
23 TRS	Helo Ops/CSAR	30	24	0	13				
OTHER	AFOSI, AFAA, CAP, AF Legal Ops Agency, AF His Res Agency	32	34	20	108				
Total		860	1,672	1,115	2,196	71	143	231	100

Part A: 42nd MEDGRP Data Call (3 of 4)

Medical Education and Training

Name of Program	Certified DOD New Starts	Number in Program	Program Length	Non-Military Users	Associated locations	Comments
Supporting VA Hospital Podiatry Residency	0	2	3 months	2	CAVHS Hospital, Montgomery, AL	Program on Hold
Training Affiliation Agreement	N/A	3	Varies	3	Troy, Ternholm, Simmons, UAB, AUM	
SABC	Varies	200/yr	1 day	0	Maxwell Gunter	
American Red Cross Life Support	Varies	200/yr	1 day	75	Maxwell Gunter	

Medical Hold

# Medical hold beds	Line or medical funded?	How do you execute medical hold?	What is your definition of medical hold?
N/A	N/A	N/A	N/A

Part A: 42nd MEDGRP Data Call (4 of 4)

Exceptional Family Member Program Summary Report

Specialties Summary

MTF Specialties Supporting EMF
Family Practice
Pediatrics
Nutrition
Adult Mental Health
EDIS

Network Specialties Lacking for EMF

Network Specialties Lacking for EMF
Pediatric Addiction Specialist
Limited ABA
Pediatric Psych Inpatient
Transplant Teams
Developmental Pediatrics

EFMP Total

Total EFMP:	550
--------------------	------------

Mission Readiness

MTF Name	MTF DMIS ID	Assigned Deployable Capability	Officer	Enlisted	ARC	Civ
Maxwell AFB	0004	FFAAT	2	4	N/A	N/A
Maxwell AFB	0004	FFBH5	0	2	N/A	N/A
Maxwell AFB	0004	FFPS	8	19	N/A	N/A
Maxwell AFB	0004	9AFS2	0	1	N/A	N/A
Maxwell AFB	0004	TFRR8	0	1	N/A	N/A
Maxwell AFB	0004	RFPF8	0	1	N/A	N/A

Part B: Relevant Section 703 Report Detail

Facility	Clinic Specialty	Encounters	Evaluated Visits	RVU	Estimated Network Ability to Absorb Workload
AF-C-412th MED GRP-EDWARDS	PEDIATRIC CLINIC	7,422	5,466	13,591	Yellow
AF-C-412th MED GRP-EDWARDS	OB/GYN CLINIC	3,326	2,197	5,482	Yellow
AF-C-412th MED GRP-EDWARDS	BEHAVIORAL HEALTH CLINIC	10,028	1,370	10,413	Yellow
AF-C-412th MED GRP-EDWARDS	PT/OT	3,793	1,439	10,603	Green
AF-C-42nd MED GRP-MAXWELL	PEDIATRIC CLINIC	19,922	12,337	28,158	Green
AF-C-42nd MED GRP-MAXWELL	PT/OT	11,969	3,134	24,175	Green
AF-C-42nd MED GRP-MAXWELL	OB/GYN CLINIC	3,500	3,042	9,111	Green
AF-C-42nd MED GRP-MAXWELL	BEHAVIORAL HEALTH CLINIC	6,857	2,592	12,619	Red
AF-C-436th MED GRP-DOVER	OB/GYN CLINIC	3,357	1,613	5,892	Green

Information Briefing Network Capabilities Alabama Prime Service Areas

19 February 2019



“Medically Ready Force...Ready Medical Force”

Problem Statement



Request by NDAA 703 Workgroup to provide an assessment of the capability of the purchased care network to absorb clinic workload and enrollment currently being provided at **AHC Lyster-Rucker, AL; AHC Fox-Redstone, AL; 42nd MedGrp-Maxwell, AL**

“Medically Ready Force...Ready Medical Force”

Methodology Overview



- Using M2/MDR workload data, THP quantifies MTF capabilities/capacity/enrollment projected to shift to Purchased Sector Care (PSC) Market
 - Market is defined as a 60-minute drive time from MTF
- Utilizing workload data provided by THP, MCSC identifies/quantifies current PSC capabilities/capacity to absorb MTF workload
- THP summarizes ability of PSC to meet the new demand for services projected to shift from the MTF to PSC

LEGEND:

- **Green:** No anticipated problems meeting workload with ATC standards.
- **Yellow:** Current or Potential for increased appointment wait time and/or drive time.
- **Red:** Anticipate exceeding appointment wait time and/or drive time standards.

“Medically Ready Force...Ready Medical Force”

PSC Assessment Maxwell AFB PSA

Civilian Inpatient Network Capabilities



MCSC ASSESSMENT OF CIVILIAN NETWORK CAPABILITIES

- **Primary Care:** Current capabilities: (**green**). Capabilities with absorbed workload: (**green**)
- **Mental Health:** Current capabilities: (**green**). Capabilities with absorbed workload: (**green**)
- **OB/GYN:** Current capabilities: (**green**). Capabilities with absorbed workload: (**yellow**)
- **Optometry:** Current capabilities: (**green**). Capabilities with absorbed workload: (**green**)
- **Physical Therapy:** Current capabilities: (**green**). Capabilities with absorbed workload: (**green**)

Considerations:

- After a review of Network Primary Care Managers (PCMs) within a 30 minute drive time, 39 PCMs are currently accepting and have capacity for new patients.
- There are six network facilities within drive time of Maxwell AFB that offer like services currently provided by the MTF with more than adequate access to care.
- When shifting non-primary care workload to the network, a phased approach should be developed.
- There are 53 OB/GYN providers contracted; however, OB/GYN is currently just over access standards, 33 avg days to care. Adding more OB/GYN to the network could possibly increase days to care.
- Case managed enrollees should have a warm hand-off to the MCSC.

“Medically Ready Force...Ready Medical Force”

42nd Med Grp - Maxwell AFB TRICARE Non-AD MTF Enrollees

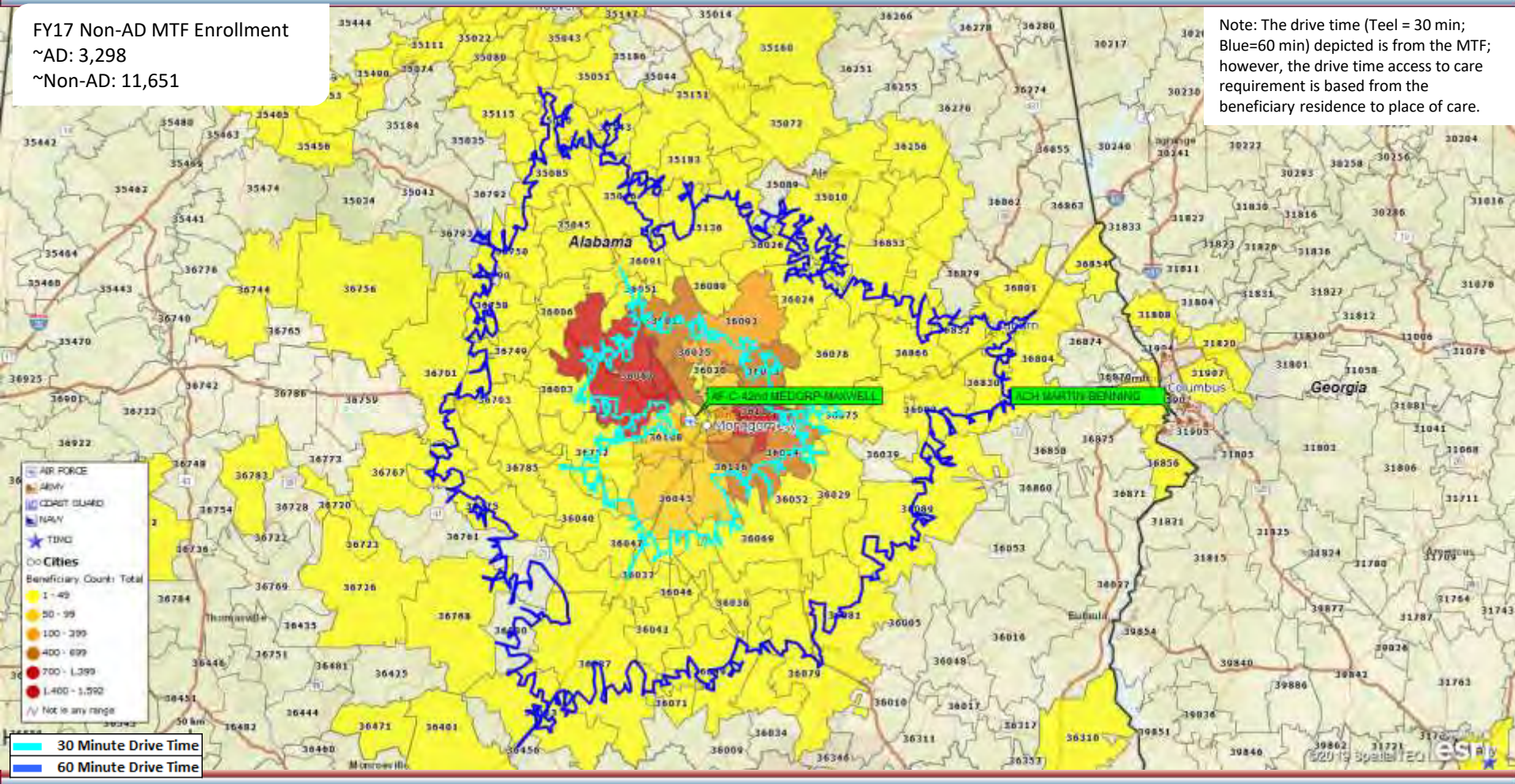


FY17 Non-AD MTF Enrollment

~AD: 3,298

~Non-AD: 11,651

Note: The drive time (Teel = 30 min; Blue=60 min) depicted is from the MTF; however, the drive time access to care requirement is based from the beneficiary residence to place of care.



Part D: Network Insight Assessment Summary (Independent Government Assessment)

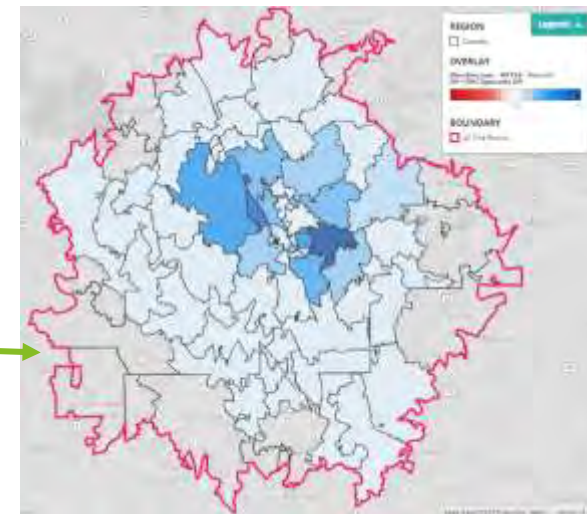
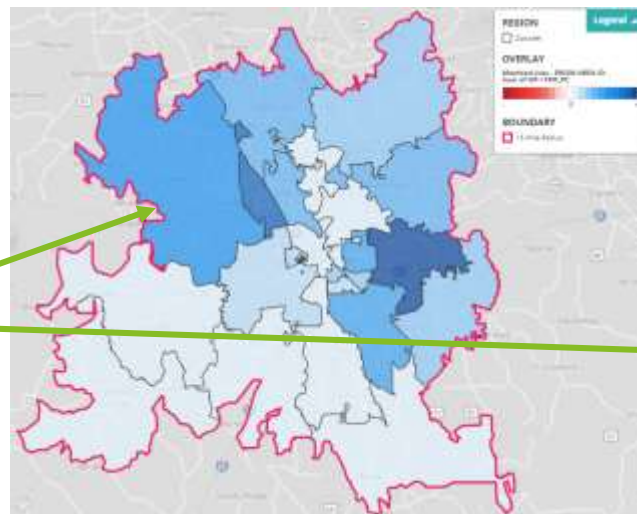
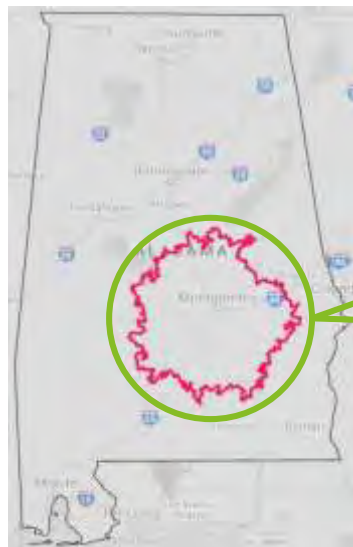


MHS Section 703 Workgroup Maxwell Network Assessment Discussion

24 April 2019

Network Assessment: Maxwell (1 of 2)

Scenario: AF-C-42nd MEDGRP-MAXWELL is an outpatient facility being evaluated for conversion to a Service Member and Occupational Health Clinic



Shading is based on population within the zip code and map scale

- 100% of non-AD MTF Prime & Plus beneficiaries are living within the 30-minute drive-time boundary for Primary Care, concentrated around the MTF location

- 100% of MTF Prime, Reliant & Medicare Eligible beneficiaries are living within the 60-minute drive-time boundary for Specialty Care, concentrated around the MTF location

Primary Care Beneficiary Category	Within 30-min	Within 60-min	Outside 60-min*
Non-AD MTF Prime ¹	10,620	0	0
Plus	54	0	0
Total	10,674	0	0

1: Includes 226 Medicare Eligible MTF Prime beneficiaries

Impacted Beneficiaries:

Specialty OP (if applicable): MTF Prime + Reliant + Medicare Eligible (OP Workload) (MTF Service Area ID)

PC: Non-AD MTF Prime + Plus (PRISM Area ID)

Specialty OP Beneficiary Category	Within 30-min	Within 60-min	Outside 60-min*
MTF Prime ²	13,935	369	0
Reliant	843	11	0
Medicare Eligible	6,532	1,208	0
Total	21,310	1,588	0

2: Includes 208 Medicare Eligible MTF Prime beneficiaries

Note: To estimate the geographic market within a 30-minute drive time of the MTF, an average driving speed of 30 MPH was assumed, and thus a 15-mile radius around the zip code of the MTF was determined as the geographic market

* The 7 member lives outside the 30-minute drive time are attributed to zip code 36100 in the MHS Beneficiary Data, which does not exist, and were thus removed from the analysis

Network Assessment: Maxwell (2 of 2)

The potential impact of new MHS Beneficiaries on the total population is well below the 10% threshold for both population groups and thus will not materially impact supply and demand of services in the market

Age Group	MHS Impacted Population	% of Total MHS Impacted Population	Population Total	% of Population Total	Impacted Population Introduced
0 to 4	1,056	9.9%	21,960	6.4%	4.8%
5 to 14	2,265	21.2%	44,764	13.0%	5.1%
15 to 17	658	6.2%	13,241	3.8%	5.0%
18 to 24	986	9.2%	35,218	10.2%	2.8%
25 to 34	720	6.7%	51,555	14.9%	1.4%
35 to 44	1,012	9.5%	44,072	12.8%	2.3%
45 to 64	3,931	36.8%	86,352	25.0%	4.6%
65 and over	46	0.4%	48,149	13.9%	0.1%
Total	10,674	100.0%	345,311	100.0%	3.1%

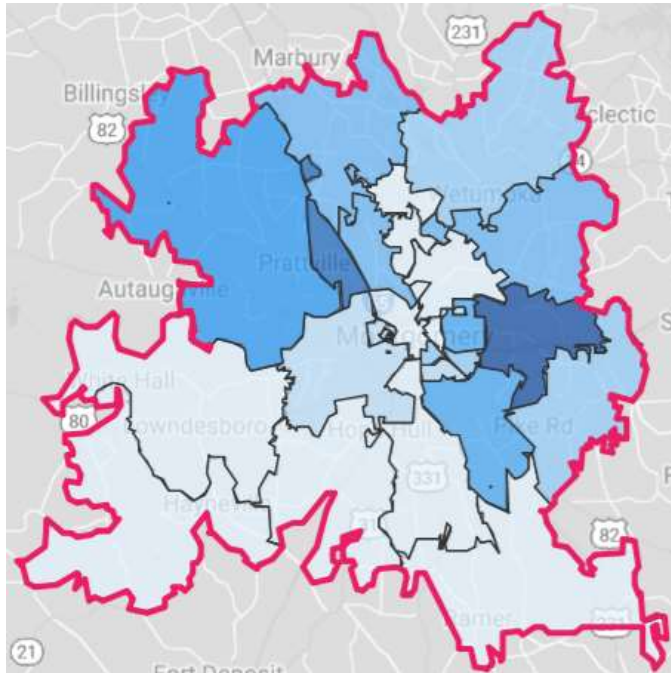
Primary Care:
Non-AD MTF
Prime, and Plus
Population

Age Group	MHS Impacted Population	% of Total MHS Impacted Population	Population Total	% of Population Total	Impacted Population Introduced
0 to 4	1,072	4.7%	35,003	6.1%	3.1%
5 to 14	2,313	10.1%	71,396	12.5%	3.2%
15 to 17	694	3.0%	21,650	3.8%	3.2%
18 to 24	1,779	7.8%	59,061	10.4%	3.0%
25 to 34	2,288	10.0%	78,959	13.9%	2.9%
35 to 44	2,422	10.6%	68,960	12.1%	3.5%
45 to 64	4,975	21.7%	147,078	25.8%	3.4%
65 and over	7,355	32.1%	87,573	15.4%	8.4%
Total	22,898	100.0%	569,680	100.0%	4.0%



Specialty OP:
MTF Prime,
Reliant, and
Medicare Eligible
Population

Maxwell: Network Adequacy Analysis (1 of 4)

Primary Care



Key

-  = 15-mile (30-minute) boundary
-  = Density of beneficiaries by zip code

- The above geography represents a 15-mile radius, which was used due to this geography being an **urban area**
- The identified drive time **includes 51 zip codes and five partial counties** (*Montgomery, Autauga, Lowndes, Elmore, and Pike*)
- **Of the 10,674 impacted primary care beneficiaries** attributed to Maxwell, **100% are represented within the 15-mile radius boundary around the MTF**

Specialty	Number of Practice Sites	Number of Physicians
Family Practice	50	50
General Practice	1	1
General Preventative Medicine	1	1
Internal Medicine	35	42
Pediatrics	12	29
Grand Total	99	123

Maxwell: Network Adequacy Analysis (2 of 4)

The **commercial primary care network** within the 30-minute drive-time standard **may not be capable of accepting** the specific demand from the **10,674** impacted beneficiaries

Supply
Low High

Specialty Rollup	Specialty	Total	Autauga	Elmore	Lowndes	Montgomery*
Primary Care	General/Family Practice	143	17	17	1	108
Primary Care	Internal Medicine	99	10	6	0	83
Primary Care	Pediatrics	47	1	2	0	44

Current Supply (Not Limited to TRICARE)

- The majority of primary care providers are located in Montgomery County, where ~51% of impacted beneficiaries reside and the MTF is located

Demand
Low High

Specialty Rollup	Specialty	Total	Autauga	Elmore	Lowndes	Montgomery*
Primary Care	General/Family Practice	165	27	40	4	94
Primary Care	Internal Medicine	116	19	29	3	65
Primary Care	Pediatrics	59	9	14	1	35

Forecasted Demand

- Population growth has been low over the last five years (2014 to 2018) averaging 0.1%, but it is projected to grow 2.1% over the next five years
- Impacted beneficiaries account for 3.1% of the population

Shortage High Low Surplus Low High

Specialty Rollup	Specialty	Total	Autauga	Elmore	Lowndes	Montgomery*
Primary Care	General/Family Practice	(22)	(10)	(23)	(3)	14
Primary Care	Internal Medicine	(17)	(9)	(23)	(3)	18
Primary Care	Pediatrics	(12)	(8)	(12)	(1)	9

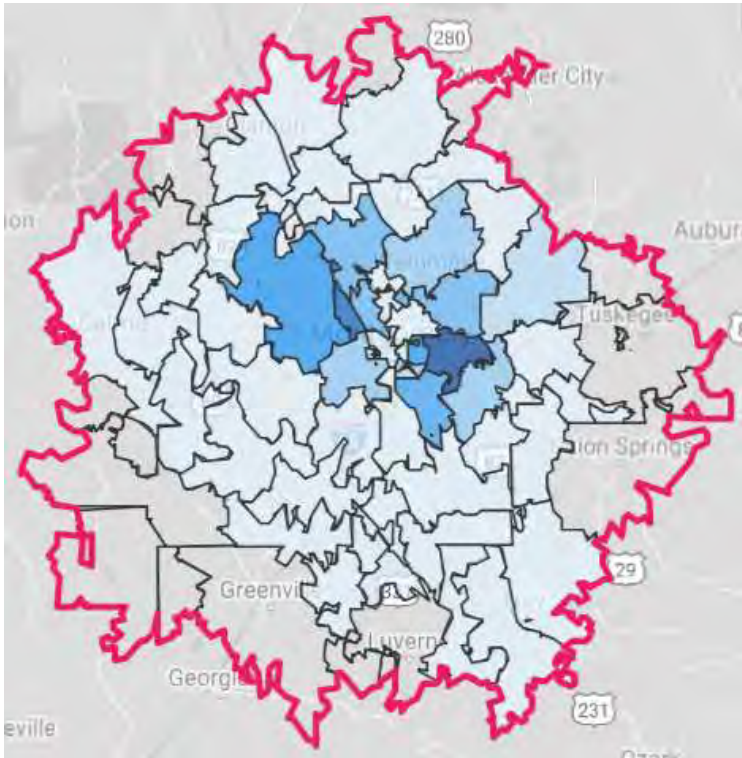
Resulting Shortage/Surplus

- There is a strong surplus of PCPs in Montgomery county, but it is not enough to cover the shortages incurred in the other counties of the geographic market
- As a result of market shortages, **the market may not be capable of accepting the incremental demand from impacted beneficiaries**

*County in which MTF is located

Maxwell: Network Adequacy Analysis (3 of 4)

Specialty Care



Key

- = 40-mile (60-minute) boundary
- = Density of beneficiaries by zip code

- The above geography represents a 40-mile radius, which was used due to this geography being an **urban area**
- The identified drive time **includes 110 zip codes, 4 complete counties** (*Autauga, Elmore, Montgomery, Lowndes*), **and 18 partial counties** (*Bibb, Perry, Dallas, Wilcox, Monroe, Butler, Chilton, Coosa, Crenshaw, Tallapoosa, Lee, Macon, Bullock, Pike, Coffee*)
- **Of the 22,898 impacted Specialty care beneficiaries** attributed to Maxwell, **100% are represented within the 40-mile radius boundary around the MTF**

Specialty	Number of Practice Sites	Number of Physicians
Obstetrics/Gynecology	24	64
Psychiatric	23	40
Grand Total	47	104

Maxwell: Network Adequacy Analysis (4 of 4)

The **commercial specialty care network** within the 60-minute drive-time standard **may not be capable of accepting** the specific demand from the **22,898** impacted beneficiaries

Current Supply (Not Limited to TRICARE)



- The majority of primary care providers are located in Montgomery County, where ~59% of impacted beneficiaries reside and the MTF is located

Forecasted Demand



- The population had decreased over last five years (2014 to 2018) averaging -1.2%, but it is projected to grow 1.4% over the next five years
- Impacted beneficiaries account for 4.0% of the population

Resulting Shortage/Surplus



- There is a minor surplus of OB/GYN physicians in Montgomery county, but it is not enough to cover the shortages incurred in the other counties of the geographic market
- Due to market shortages and a lack of population growth that warrants new entrants, **the market may not be capable of accepting incremental demand from impacted beneficiaries**

*County in which MTF is located

Maxwell: Targeted Practice Profiles (1 of 5)

Based on the number of primary care practices accepting TRICARE or other government-sponsored insurance and offering extended hours of care, a large number of providers should meet MHS access standards

Primary Care Practice Profiles

Practice Site Size	Number of Practice Sites	Average Physicians per Site
Small (1-4)	96	1.4
Medium (5-9)	2	6.0
Large (10+)	1	11.0
Grand Total	99	1.6

Practice Name	Monthly Extended Hours
Jackson Hospitalist Group	105.0
American Family Care	42.0
Gateway Family Health	18.0
Eastside Urgent Care	16.0
Baptist Convenient Care Millbrook	15.0
Calin G Braicu MD	5.0
Mulberry Medical Associates PC	5.0
The Jackson Clinic Family Medicine	5.0
Prattville Medical Clinic	5.0
Internal Medicine Associates	5.0
Montgomery Primary Medicine Associates	5.0
Grand Total	226.0

Health System Alignment	Number of Practice Sites	Number of Physicians
Other	5	9
(Aligned to Multiple Health Systems)	94	114
Grand Total	99	123

Hospital Alignment	Number of Practice Sites	Number of Physicians
(Aligned to Multiple Hospitals)	34	44
Baptist Medical Center East	22	32
Jackson Hospital & Clinic Inc	14	26
Baptist Medical Center South	10	9
Elmore Community Hospital	5	6
Prattville Baptist Hospital	5	2
Noland Hospital Montgomery	1	1
Healthsouth Rehabilitation Hospital Of Montgomery	1	1
Tombigbee Healthcare Authority	1	1
Vaughan Regional Medical Center	1	1
Florida Hospital New Smyrna	1	
Northeast Georgia Medical Center, Inc	1	
Cullman Regional Medical Center	1	
Moses Taylor Hospital	1	
Midtown Medical Center	1	
Grand Total	99	123

1. List includes top 13 hospitals by aligned physicians

Practices without a physician count have either opted to not participate in data.medicare.gov or have declined not to answer survey questions

Maxwell: Targeted Practice Profiles (2 of 5)

Based on the number of Obstetrics/Gynecology Practice accepting TRICARE or other government-sponsored insurance, a few providers should meet MHS access standards

Obstetrics/Gynecology Practice Profiles

Practice Site Size	Number of Practice Sites	Average Physicians per Site
Small (1-4)	19	1.8
Medium (5-9)	4	6.3
Large (10+)	1	11.0
Grand Total	24	3.0

Practice Name	Monthly Extended Hours
Central Alabama Womens Care	2.0
Glenn J Saucer MD	2.0
Katharine R Cooper MD	2.0
Grand Total	6.0

Health System Alignment	Number of Practice Sites	Number of Physicians
Other	2	8
(Aligned to Multiple Health Systems)	22	56
Grand Total	24	64

Hospital Alignment	Number of Practice Sites	Number of Physicians
Baptist Medical Center East	8	39
Shelby Baptist Medical Center	1	6
Jackson Hospital & Clinic Inc	3	5
Russell Medical	2	4
(Aligned to Multiple Hospitals)	4	3
Brookwood Medical Center	1	3
Baptist Medical Center South	2	2
Vaughan Regional Medical Center	1	1
Troy Regional Medical Center	1	1
Vaughan Regional Medical Center Parkway Campus	1	
Grand Total	24	64

Practices without a physician count have either opted to not participate in data.medicare.gov or have declined not to answer survey questions

Maxwell: Targeted Practice Profiles (3 of 5)

Based on the number of Psychiatry practices accepting TRICARE or other government-sponsored insurance and offering extended hours of care, some providers should meet MHS access standards

Psychiatry Practice Profiles

Practice Site Size	Number of Practice Sites	Average Physicians per Site
Small (1-4)	22	1.8
Medium (5-9)	1	8.0
Grand Total	23	2.1

Practice Name	Monthly Extended Hours
Senior Care	105.0
Montgomery Area Psychiatric Services	8.0
Grace Point Behavioral	1.0
Grand Total	114.0

Health System Alignment	Number of Practices	Number of Physicians
Other	2	3
(Aligned to Multiple Health Systems)	21	37
Grand Total	23	40

Hospital Alignment	Number of Practice Sites	Number of Physicians
(Aligned to Multiple Hospitals)	13	17
Baptist Medical Center South	2	8
Baptist Medical Center East	2	5
Community Hospital	1	4
Bullock County Hospital	2	2
L V Stabler Memorial Hospital	1	2
Crenshaw Community Hospital	1	1
Grand Total	23	40

1. List includes top 7 hospitals by aligned physicians

Practices without a physician count have either opted to not participate in data.medicare.gov or have declined not to answer survey questions

Maxwell: Targeted Practice Profiles (4 of 5)

While ability and willingness to accept TRICARE patients must be confirmed, the vast majority of providers in the Maxwell market are accepting government-sponsored insurance, and many are already contracted to provide services to TRICARE beneficiaries

Primary Care Providers

Likelihood of offering services to TRICARE members	Number of Sites	Number of Physicians
Contracted with TRICARE	37	47
High Likelihood*	12	23
Medium Likelihood	34	44
Low Likelihood	16	9
Grand Total	99	123

Contracted Practice Sample	Specialty
Jackson Hospitalist Group	Internal Medicine
Partners In Pediatrics	Pediatrics
Primary Care Internists Of Montgomery PC	Internal Medicine
Mulberry Medical Associates PC	Internal Medicine
American Family Care	Family Practice
All About Kids	Pediatrics
Family Care Associates	Family Practice
William O Sargeant DO	Family Practice
Adams Family Practice PC	Family Practice
East Montgomery Christian Family Medicine	Family Practice
Montgomery Internists	Internal Medicine
Geriatric Associates Of Montgomery	Internal Medicine

Currently Contracted - The provider organization has a history of submitting In-Network claims to TRICARE

High Likelihood* - The provider organization has a history of submitting Out-of-Network claims to TRICARE

Medium Likelihood - Providers are accepting Medicare and/or Medicaid

Low Likelihood - The provider organization has a history of not accepting Government Sponsored Health Plan patients

***Note:** The current TPA providing claims processing services for the TRICARE FOR LIFE beneficiary designation do not provide an "In-Network" designation during the claims process. These provider claims are marked as Out-of-Network by default

Maxwell: Targeted Practice Profiles (5 of 5)

While ability and willingness to accept TRICARE patients must be confirmed, the vast majority of providers in the Maxwell market are accepting government-sponsored insurance, and many are already contracted to provide services to TRICARE beneficiaries

Obstetrics/Gynecology Care Providers

Likelihood of offering services to TRICARE members	Number of Sites	Number of Physicians
Contracted with TRICARE	7	13
High Likelihood*	1	1
Medium Likelihood	15	50
Low Likelihood	1	
Grand Total	24	64

Psychiatric Care Providers

Likelihood of offering services to TRICARE members	Number of Sites	Number of Physicians
Contracted with TRICARE	7	6
High Likelihood*	2	4
Medium Likelihood	11	18
Low Likelihood	3	12
Grand Total	23	40

Contracted Practice Sample	Specialty
Physicians For Women	Obstetrics/Gynecology
Montgomery Psychiatry & Associates	Psychiatric
Central Alabama Women's Care	Obstetrics/Gynecology
Alabama Department Of Public Health	Obstetrics/Gynecology
Jackson Obstetrics & Gynecology	Obstetrics/Gynecology
Grace Point Behavioral	Psychiatric
Reproductive Health Services	Obstetrics/Gynecology
Montgomery Area Psychiatric Services	Psychiatric
River Region Psychiatry Associates, LLC	Psychiatric

Currently Contracted - The provider organization has a history of submitting In-Network claims to TRICARE

High Likelihood* - The provider organization has a history of submitting Out-of-Network claims to TRICARE

Medium Likelihood - Providers are accepting Medicare and/or Medicaid

Low Likelihood - The provider organization has a history of not accepting Government Sponsored Health Plan patients

***Note:** The current TPA providing claims processing services for the TRICARE FOR LIFE beneficiary designation do not provide an "In-Network" designation during the claims process. These provider claims are marked as Out-of-Network by default

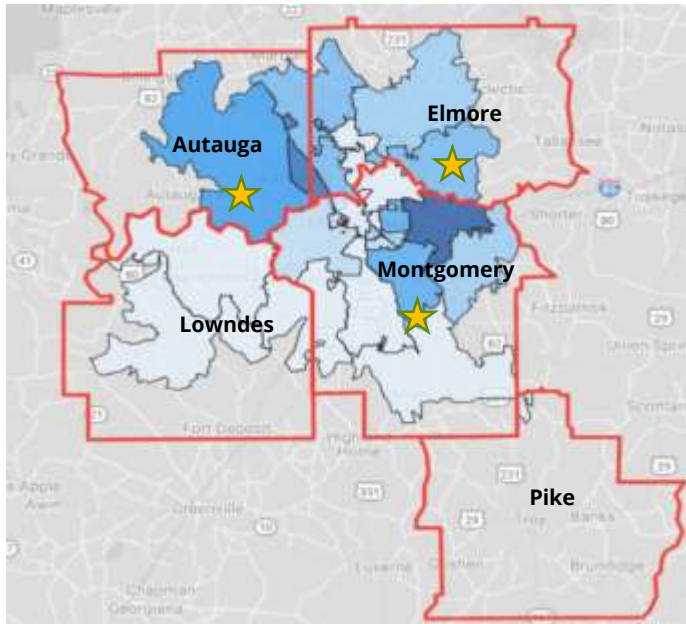
Appendix A

1. Alternate Slides

Network Assessment: Maxwell

The table below breaks out the potentially impacted TRICARE beneficiaries by county of residence that could potentially be impacted by facility closure

County	Alabama										
	Autauga	Bullock	Chilton	Coosa	Crenshaw	Dallas	Elmore	Lowndes	Macon	Montgomery	Pike
Primary Care (Non-AD MTF Prime, Plus)	2,990	0	0	0	0	0	2,189	20	0	5,474	0
	28%	0%	0%	0%	0%	0%	21%	0%	0%	51%	0%
Specialty OP (MTF Prime, Reliant, Medicare Eligible)	4,288	17	257	60	72	300	4,184	150	87	13,456	27
	19%	0%	1%	0%	0%	1%	18%	1%	0%	59%	0%



Primary Geography for Evaluation:

Primary Care Services:

- Autauga, Elmore, Montgomery

Specialty Care Services:

- N/A

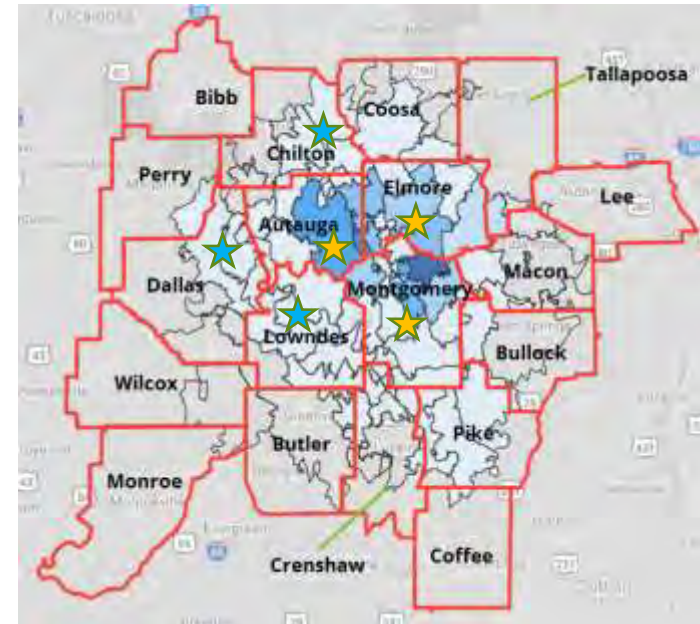
Secondary Geography for Evaluation:

Primary Care Services:

- Autauga, Elmore, Montgomery

Specialty Care Services:

- Chilton, Dallas, Lowndes



Drive time boundary is the county that encompasses zip codes within drive time radius from MTF



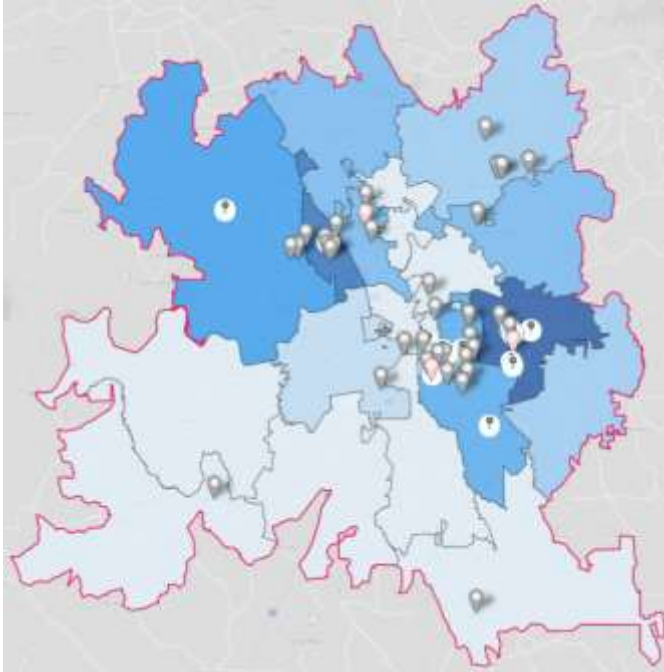
Primary Network Adequacy Evaluation



Secondary Network Adequacy Evaluation

Maxwell: Network Adequacy Analysis (1 of 4)

Primary Care (Option 2)



Key

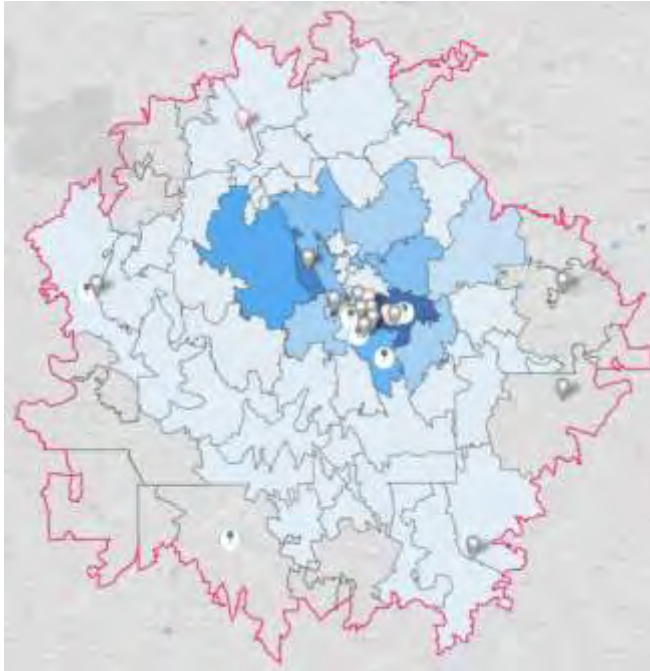
- = 15-mile (30-minute) boundary
- = Density of beneficiaries by zip code

- The above geography represents a 15-mile radius, which was used due to this geography being an **urban area**
- The identified drive time **includes 51 zip codes and five partial counties** (*Montgomery, Autauga, Lowndes, Elmore, and Pike*)
- **Of the 10,674 impacted primary care beneficiaries** attributed to Maxwell, **100% are represented within the 15-mile radius boundary around the MTF**

Specialty	Number of Practice Sites	Number of Physicians
Family Practice	50	50
General Practice	1	1
General Preventative Medicine	1	1
Internal Medicine	35	42
Pediatrics	12	29
Grand Total	99	123

Maxwell: Network Adequacy Analysis (3 of 4)

Specialty Care (Option 2)



Key

- = 40-mile (60-minute) boundary
- = Density of beneficiaries by zip code

- The above geography represents a 40-mile radius, which was used due to this geography being an **urban area**
- The identified drive time **includes 110 zip codes, four complete counties** (*Autauga, Elmore, Montgomery, Lowndes*), and **18 partial counties** (*Bibb, Perry, Dallas, Wilcox, Monroe, Butler, Chilton, Coosa, Crenshaw, Tallapoosa, Lee, Macon, Bullock, Pike, Coffee*)
- **Of the 22,898 impacted Specialty care beneficiaries** attributed to Maxwell, **100% are represented within the 40-mile radius boundary around the MTF**

Specialty	Number of Practice Sites	Number of Physicians
Obstetrics/Gynecology	24	64
Psychiatric	23	40
Grand Total	47	104

Part E: P4I Measures (1 of 17)

MHS Dashboard - AF-C-42nd MEDGRP-MAXWELL

Filter

All  RMG  My 

Export

View as of

Apply

Clear

Layout

Go back to: [MHS](#) > [AETC](#)

Readiness- **Medically** Ready Force

Individual Medical Readiness
(IMR)

Current Data Date

Freq of Update

Quarterly



Deployment Limiting Med/Dent Condition to fit

Click documentation icon for measure details



Percent of Providers Meeting KSAs for General Surgery

Click documentation icon for measure details



Percent of Providers Meeting KSAs for Orthopedic Surgery

Click documentation icon for measure details



Part E: P4I Measures (2 of 17)

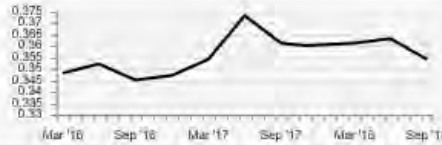
Better Health- **Improve** Well-Being

Health Related
Quality of Life

Current Data Date

Freq of Update
Annually

Obesity Prevalence in Adults
35.4 %

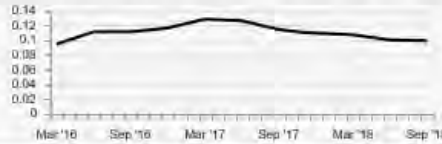


Current Data Date
Sep '18

Freq of Update
Quarterly

Lower is better

Obesity Prevalence in Children
9.9 %



Current Data Date
Sep '18

Freq of Update
Quarterly

Lower is better

Overweight Prevalence in Adults
40.5 %

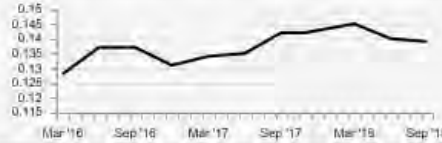


Current Data Date
Sep '18

Freq of Update
Quarterly

Lower is better

Overweight Prevalence in Children
13.9 %

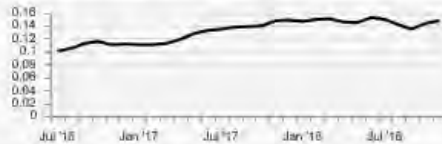


Current Data Date
Sep '18

Freq of Update
Quarterly

Lower is better

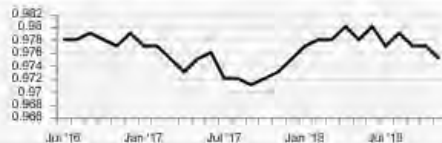
Cessation Counseling Amongst Tobacco Users
14.7 %



Current Data Date
Nov '18

Freq of Update
Monthly

Tobacco Use Assessment
97.5 %



Current Data Date
Nov '18

Freq of Update
Monthly

Part E: P4I Measures (3 of 17)

Better Care- **Improve** Clinical Outcomes

Risk Adjusted Mortality
(All Cause)

Current Data Date

Freq of Update

Quarterly



Lower is better

Inpatient: Recommend
Hospital (Satisfaction)

Current Data Date

Freq of Update

Quarterly



Outpatient Provider
Communication

81.17 %



Current Data Date

Jun '18

Freq of Update

Quarterly

Part E: P4I Measures (4 of 17)

Better Care- **Improve** Safety

Catheter-Associated

Urinary Tract Infections - SIR



Current Data Date

Freq of Update

Quarterly

Lower is better

Central Line--Associated

Bloodstream Infections - SIR



Current Data Date

Freq of Update

Quarterly

Lower is better

WSS (Wrong Site Surgery)



Current Data Date

Freq of Update

Quarterly

Lower is better

URFO (Unintended

Retained Foreign Objects)



Current Data Date

Freq of Update

Quarterly

Lower is better

NSQIP (30 Day) All Case

Morbidity Index

[Click to view the report](#)

NSQIP (30 Day) All Case

Mortality Index

[Click to view the report](#)

Part E: P4I Measures (5 of 17)

Better Care- **Improve** Condition-based Quality Care

Diabetes A1c Testing

93.50 %



Current Data Date

Oct '18

Freq of Update

Monthly

Low Back Pain Imaging Studies

75.13 %



Current Data Date

Oct '18

Freq of Update

Monthly

Children with Pharyngitis

Appropriate Testing

81.00 %



Current Data Date

Oct '18

Freq of Update

Monthly

HEDIS Breast Cancer
Screening

63.09 %



Current Data Date

Oct '18

Freq of Update

Monthly

HEDIS Cervical Cancer
Screening

76.84 %



Current Data Date

Oct '18

Freq of Update

Monthly

HEDIS Colon Cancer
Screening

69.15 %



Current Data Date

Oct '18

Freq of Update

Monthly

Part E: P4I Measures (6 of 17)

7-Day Mental Health Follow-Up

51.85 %



Current Data Date
Oct '18

Freq of Update
Monthly

HEDIS All Cause Readmissions



Current Data Date

Freq of Update
Monthly

Lower is better

Well Child 84.51 %



Current Data Date
Oct '18

Freq of Update
Monthly

IQI #33 Primary Cesarean Section



Current Data Date

Freq of Update
Quarterly

Lower is better

Postpartum Hemorrhage



Current Data Date

Freq of Update
Quarterly

Lower is better

Unexpected Newborn Complication #716



Current Data Date

Freq of Update
Quarterly

Lower is better

Part E: P4I Measures (7 of 17)

Better Care- **Improve** Comprehensive Primary Care

Days to Third Next Available
24 Hour Appointment

1.54



Current Data Date

Dec '18

Freq of Update

Monthly

Lower is better

Days to Third Next Available
Future Appointment

9.09



Current Data Date

Dec '18

Freq of Update

Monthly

Lower is better

Potentially Recapturable
PC Leakage to the Network

24.95 %



Current Data Date

Sep '18

Freq of Update

Monthly

Lower is better

PCM Continuity

60.42 %



Current Data Date

Dec '18

Freq of Update

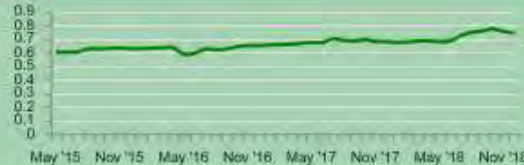
Monthly

Part E: P4I Measures (8 of 17)

Better Care- **Optimize & Standardize** Access

Percent of Direct Care Enrollees
with Secure Messaging

74.02 %



Current Data Date
Dec '18

Freq of Update
Monthly

SM Response Time
One Business Day

81.50 %



Current Data Date
Dec '18

Freq of Update
Monthly

Satisfaction with
Getting Care When Needed

80.67 %



Current Data Date
Sep '18

Freq of Update
Quarterly

Specialty Care:
Referral Order to Book

8.45



Current Data Date
Oct '18

Freq of Update
Monthly

Lower is better

Specialty Care:
Booked to Actual Appt

13.57



Current Data Date
Oct '18

Freq of Update
Monthly

Lower is better

Part E: P4I Measures (9 of 17)

Ambulatory Specialty Care

Leakage

5.3 %



Current Data Date

Oct '18

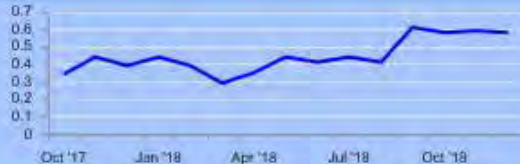
Freq of Update

Monthly

Lower is better

Active Duty Days to Primary Care Appointments

0.58



Current Data Date

Dec '18

Freq of Update

Monthly

Lower is better

Active Duty Days to Specialty Care Appointments

8.27



Current Data Date

Dec '18

Freq of Update

Monthly

Lower is better

MEB Stage Timeliness

Click documentation icon for measure details



Part E: P4I Measures (10 of 17)

Better Care - **Improve** Regulatory Compliance

American Council for Graduate Medical Education (ACGME) Accreditation Status

Click documentation icon for measure details



Accreditation for DoD Clinical Laboratories

Click documentation icon for measure details



Joint Commission Accreditation

Click documentation icon for measure details

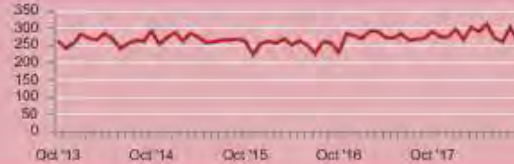


Part E: P4I Measures (11 of 17)

Lower Cost - **Improve** Stewardship

Per Member Per Month

3.96 %



Current Data Date

Sep '18

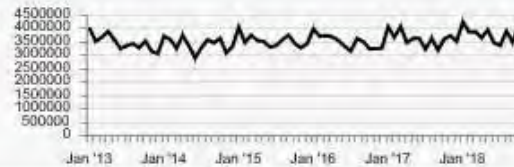
Freq of Update

Monthly

Lower is better

Total Purchased Care Cost

N/A



Current Data Date

Oct '18

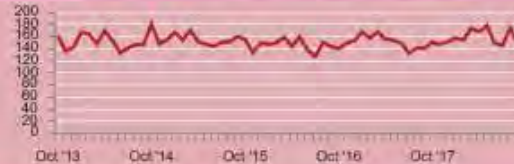
Freq of Update

Monthly

Lower is better

Private Sector Care Cost
per Prime Enrollee

5.03 %



Current Data Date

Sep '18

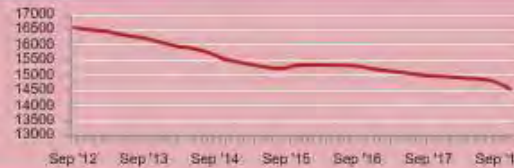
Freq of Update

Monthly

Lower is better

Total Empanelment

-1.4 %



Current Data Date

Nov '18

Freq of Update

Monthly

Pharmacy Percent Retail Spend

28.2 %



Current Data Date

Nov '18

Freq of Update

Monthly

Lower is better

Part E: P4I Measures (12 of 17)

Active Duty Specialty Care
Provider Efficiency

0 %



Current Data Date
Sep '18

Freq of Update
Quarterly

Overall Occupancy Rate (US) No data is currently available

ICU Occupancy Rate (US) No data is currently available

Enterprise Support Activity (ESA) Net Benefit

Click documentation icon for measure details



Part E: P4I Measures (13 of 17)

MHS Dashboard - AF-C-42nd MEDGRP-MAXWELL

Filter

All CI PMG TRM My

Export

PDF PNG XLS Grid

View as of

Layout

Go back to: [MHS](#) > [AETC](#)

Apply Clear

	= decrease in current value from prior
	= increase in current value from prior
	= no change in current value from prior
Trend – the number of data periods corresponding to the performance trend direction	

Readiness- **Medically** Ready Force

Measure	Data As Of	Next Refresh	Red	Yellow	Green	Blue	AF-C-42nd MEDGRP-MAXWELL	
							Current	Prior
IMR	-	4/2019	-	-	-	-	-	-
							Performance	Trend
							-	-
							Current	Prior
Deployment Limiting Med/Dent Condition	-	4/2019	-	-	-	-	-	-
							Performance	Trend
							-	-
							Current	Prior
Percent Meeting KSAs General Surgery	-	2/2019	-	-	-	-	-	-
							Performance	Trend
							-	-
							Current	Prior
Percent Meeting KSAs Orthopedic Surgery	-	2/2019	-	-	-	-	-	-
							Performance	Trend
							-	-

Part E: P4I Measures (14 of 17)

Better Health- Improve Well-Being

Measure	Data As Of	Next Refresh	Red	Yellow	Green	Blue	AF-C-42nd MEDGRP- MAXWELL	Current	Prior	Performance	Trend
HRQOL	-	9/2019	-	-	-	-	-	-	-	-	-
Obesity in Adults <i>Lower is better</i>	9/2018	3/2019	-	-	-	-	-	35.4 %	36.3 %	1	↓
Obesity in Children <i>Lower is better</i>	9/2018	3/2019	-	-	-	-	-	9.9 %	10.0 %	6	↓
Overweight in Adults <i>Lower is better</i>	9/2018	3/2019	-	-	-	-	-	40.5 %	39.5 %	1	↑
Overweight in Children <i>Lower is better</i>	9/2018	3/2019	-	-	-	-	-	13.9 %	14.0 %	2	↓
Tobacco Counseling	11/2018	2/2019	-	-	-	-	-	14.7 %	14.3 %	2	↑
Tobacco Use Assessment	11/2018	2/2019	-	-	-	-	-	97.5 %	97.7 %	1	↓

Better Care- Improve Clinical Outcomes

Measure	Data As Of	Next Refresh	Red	Yellow	Green	Blue	AF-C-42nd MEDGRP- MAXWELL	Current	Prior	Performance	Trend
Risk Adjusted Mortality <i>Lower is better</i>	-	2/2019	-	-	-	-	-	-	-	-	-
Recommend Hospital	-	2/2019	-	-	-	-	-	-	-	-	-
Provider Communication	6/2018	2/2019	< 85%	>= 85%	>= 88%	>= 91%	-	81.17 %	78.70 %	1	↑

Better Care- Improve Safety

Measure	Data As Of	Next Refresh	Red	Yellow	Green	Blue	AF-C-42nd MEDGRP- MAXWELL	Current	Prior	Performance	Trend
CAUTI - SIR <i>Lower is better</i>	-	4/2019	-	-	-	-	-	-	-	-	-
CLABSI - SIR <i>Lower is better</i>	-	4/2019	-	-	-	-	-	-	-	-	-
WSS <i>Lower is better</i>	-	4/2019	-	-	-	-	-	-	-	-	-
URFO <i>Lower is better</i>	-	4/2019	-	-	-	-	-	-	-	-	-

Part E: P4I Measures (15 of 17)

Better Care - Improve Condition-based Quality Care

Measure	Data As Of	Next Refresh	Red	Yellow	Green	Blue	AF-C-42nd MEDGRP- MAXWELL
Diabetes A1c Testing	10/2018	2/2019	< 90.54%	≥ 90.54%	≥ 93.37%	≥ 94.89%	Current: 93.50% Prior: 93.38% Performance: Trend 5
Low Back Pain	10/2018	2/2019	< 73.91%	≥ 73.91%	≥ 78.57%	≥ 82.98%	Current: 75.12% Prior: 74.12% Performance: Trend 1
Children w/Pharyngitis	10/2018	2/2019	< 86.86%	≥ 86.86%	≥ 90.61%	≥ 94.12%	Current: 81.00% Prior: 82.52% Performance: Trend 3
Breast Cancer Screening	10/2018	2/2019	< 73.55%	≥ 73.55%	≥ 77.49%	≥ 81.04%	Current: 63.09% Prior: 62.57% Performance: Trend 2
Cervical Cancer Screening	10/2018	2/2019	< 75.91%	≥ 75.91%	≥ 79.02%	≥ 82.48%	Current: 76.84% Prior: 77.00% Performance: Trend 1
Colon Cancer Screening	10/2018	2/2019	< 63.34%	≥ 63.34%	≥ 70.21%	≥ 74.7%	Current: 69.15% Prior: 68.57% Performance: Trend 1

7-Day Mental Health	10/2018	2/2019	< 51.72%	≥ 51.72%	≥ 62.9%	≥ 69.68%	Current: 51.85% Prior: 51.06% Performance: Trend 1
All Cause Readmissions Lower is better	-	2/2019	-	-	-	-	Performance: Trend -
Well Child	10/2018	2/2019	< 81.9%	≥ 81.9%	≥ 86.59%	≥ 89.81%	Current: 84.51% Prior: 85.30% Performance: Trend 2
IQI #33 Primary Cesarean Section Lower is better	-	4/2019	-	-	-	-	Performance: Trend -
Postpartum Hemorrhage Lower is better	-	4/2019	-	-	-	-	Performance: Trend -
Unexpected Newborn Complication #716 Lower is better	-	4/2019	-	-	-	-	Performance: Trend -

Part E: P4I Measures (16 of 17)

Better Care-Improve Comprehensive Primary Care

Measure	Data As Of	Next Refresh	Red	Yellow	Green	Blue	AF-C-42nd MEDGRP-MAXWELL
24 Hour Appts <i>Lower is better</i>	12/2018	2/2019	>1.50 Days	<=1.5 Days	<=1 Days	<=0.83 Days	Current: 1.54, Prior: 1.49, Performance: 2
Future Appts <i>Lower is better</i>	12/2018	2/2019	>8 Days	<=6 Days	<=7 Days	<=2.3 Days	Current: 9.09, Prior: 7.08, Performance: 2
PC Leakage (Recap) <i>Lower is better</i>	9/2018	2/2019	>= 12.00%	< 12.00%	<= 8.00%	<= 3.00%	Current: 24.95%, Prior: 19.98%, Performance: 1
PCM Continuity	12/2018	2/2019	< 55%	>= 55%	>= 65%	>= 75%	Current: 60.42%, Prior: 66.96%, Performance: 1

Better Care-Optimize & Standardize Access

Measure	Data As Of	Next Refresh	Red	Yellow	Green	Blue	AF-C-42nd MEDGRP-MAXWELL
SM Enrollment	12/2018	2/2019	<37%	>=37%	>=50%	>=75%	Current: 74.02%, Prior: 74.99%, Performance: 2
SM Response Time 1 Day	12/2018	2/2019	<70%	>=70%	>=80%	>=87%	Current: 81.50%, Prior: 86.46%, Performance: 1

Getting Care When Needed	9/2018	2/2019	<81.20%	>=81.20%	>=84.40%	>=87.20%	Current: 80.67%, Prior: 85.72%, Performance: 2
Specialty: Referral to Book <i>Lower is better</i>	10/2018	2/2019	>4 Days	<=4 Days	<=3 Days	<=1 Day	Current: 8.45, Prior: 12.32, Performance: 1
Specialty: Booked to Appt <i>Lower is better</i>	10/2018	2/2019	>24 Days	<=24 Days	<=15 Days	<=7.5 Days	Current: 13.57, Prior: 13.92, Performance: 2
Amb Specialty Care Leakage <i>Lower is better</i>	10/2018	2/2019	> 23.7%	<= 23.7%	<= 10.7%	<= 2.0%	Current: 5.3%, Prior: 56.3%, Performance: 1
AD: Days To Primary Care <i>Lower is better</i>	12/2018	2/2019	>1.5 Days	<=1.5 Days	<=1 Days	<=0.83 Days	Current: 0.58, Prior: 0.59, Performance: 1
AD: Days To Specialty Care <i>Lower is better</i>	12/2018	2/2019	>24 Days	<=24 Days	<=15 Days	<=7.5 Days	Current: 8.27, Prior: 8.84, Performance: 1
MEB Stage Timeliness	-	2/2019	-	-	-	-	Current: -, Prior: -, Performance: -

Part E: P4I Measures (17 of 17)

Better Care - Improve Regulatory Compliance

Measure	Data As Of	Next Refresh	Red	Yellow	Green	Blue	AF-C-42nd MEDGRP- MAXWELL	Current	Prior
ACGME Accreditation Status	-	9/2019	-	-	-	-	-	-	-
Accreditation for DoD Clinical Laboratories	-	1/2019	-	-	-	-	-	-	-
Joint Commission Accreditation	-	1/2019	-	-	-	-	-	-	-

Lower Cost - Improve Stewardship

Measure	Data As Of	Next Refresh	Red	Yellow	Green	Blue	AF-C-42nd MEDGRP- MAXWELL	Current	Prior
PMPM <i>Lower is better</i>	9/2018	5/2019	> 3.20%	-	<= 3.20%	<= 0.00%	-	3.96%	4.55%
Total Purchased Care Cost <i>Lower is better</i>	10/2018	3/2019	> FY Target	-	<= FY Target	<= Next FY Target	-	\$4.11M	\$3.43M
Private Sector Care Cost <i>Lower is better</i>	9/2018	5/2019	> 3.20%	-	<= 3.20%	<= 0.00%	-	5.03%	4.95%

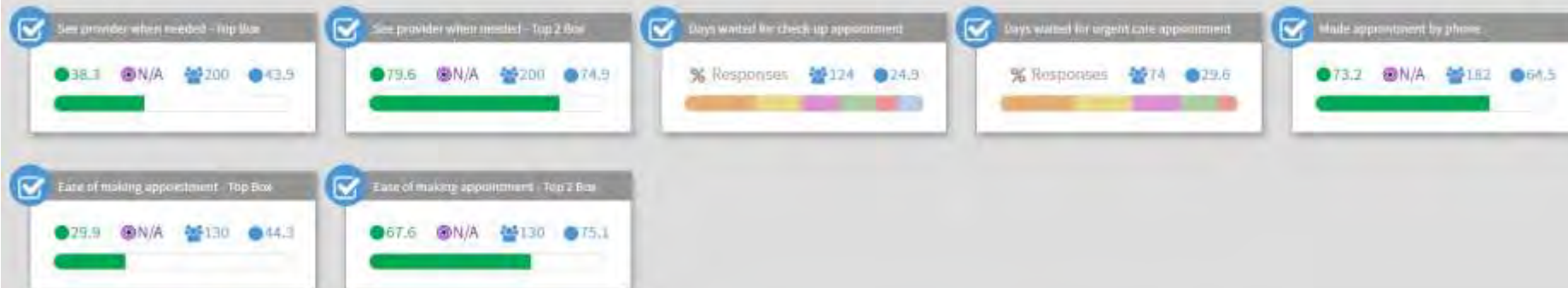
Total Empanelment	11/2018	2/2019	<	< but >=	>=	-	-	-1.4%	-0.7%
Pharmacy Percent Retail <i>Lower is better</i>	11/2018	2/2019	> 30%	<= 30%	<= 25%	-	-	28.2%	28.2%
AD: Spec Prov Efficiency	9/2018	4/2019	< 61%	>= 61%	< 79%	>= 79%	-	0	0
Overall Occ Rate (US)	-	2/2019	-	-	-	-	-	-	-
ICU Occ Rate (US)	-	2/2019	-	-	-	-	-	-	-
ESA Benefit	-	3/2019	-	-	-	-	-	-	-

Part F: JOES-C

JOES-C 12-months Rolling Data (1 of 2)

AF-C-42nd MEDGRP-Maxwell Direct Care

Access to Provider



Appointment



Contact Office



JOES-C 12-months Rolling Data (2 of 2)

AF-C-42nd MEDGRP-Maxwell Market Purchased Care

Select Care Type: Direct Care Purchased Care DC/PC Combined [View My MTE \(QAS\)](#)

Aggregation: Patient Encounter Date:

Region: PSA:

Report Options:

Select Benchmark: 50% Percentile CAHPS NIS-Adjusted Benchmark

Collapse Filters

Purchased Care | PSA: MAXWELL AFB (Pre-Jan 2018) | 12 Month - January 2019 | 50% Percentile CAHPS

There were no results matching your search criteria.

Part G: Base Mission Brief



42d Air Base Wing Mission Brief



Colonel Patrick J. Carley



Overview



- Mission – Vision – Priorities
- By the Numbers
- Wing organization
- Mission partners
- Wing Highlights
- Questions



42 Air Base Wing



Mission

The foundation of Air University and our mission partners ... enabling mission success

Vision

Provide a world-class installation for Airmen and families ... developing the next generation of leaders

Priorities

Provide world-class support to Air University and mission partners

Develop Airmen and care for Airmen and their families

Support Combatant Commanders with mission-ready Airmen





Team Maxwell

Maxwell AFB and Gunter Annex By the Numbers

Base Personnel

22,484

Active Duty Military	3,298
AF Reserve/Air National Guard	1,235
DOD Civilians (including Non-Appropriated)	3,255
Contract Employees	1,316
Average Daily Number of Students on Base	2,880
Active Duty Family Members	10,500

Other Personnel

38,915

Retirees and Families	38,000
Federal Inmates	915

Total Population

61,399

Indirect Jobs Created 3,352

Annual Payroll	\$637.5 Million
Annual Contracts	\$281.2 Million
Total FY18 Economic Impact	\$10.08 Billion



42d Air Base Wing

Organization





42 ABW Highlights





Questions?

Part H: MTF Mission Brief



42d Medical Group, Maxwell AFB



42d Medical Group

***Col Jeanette L. Frantal
Commander***



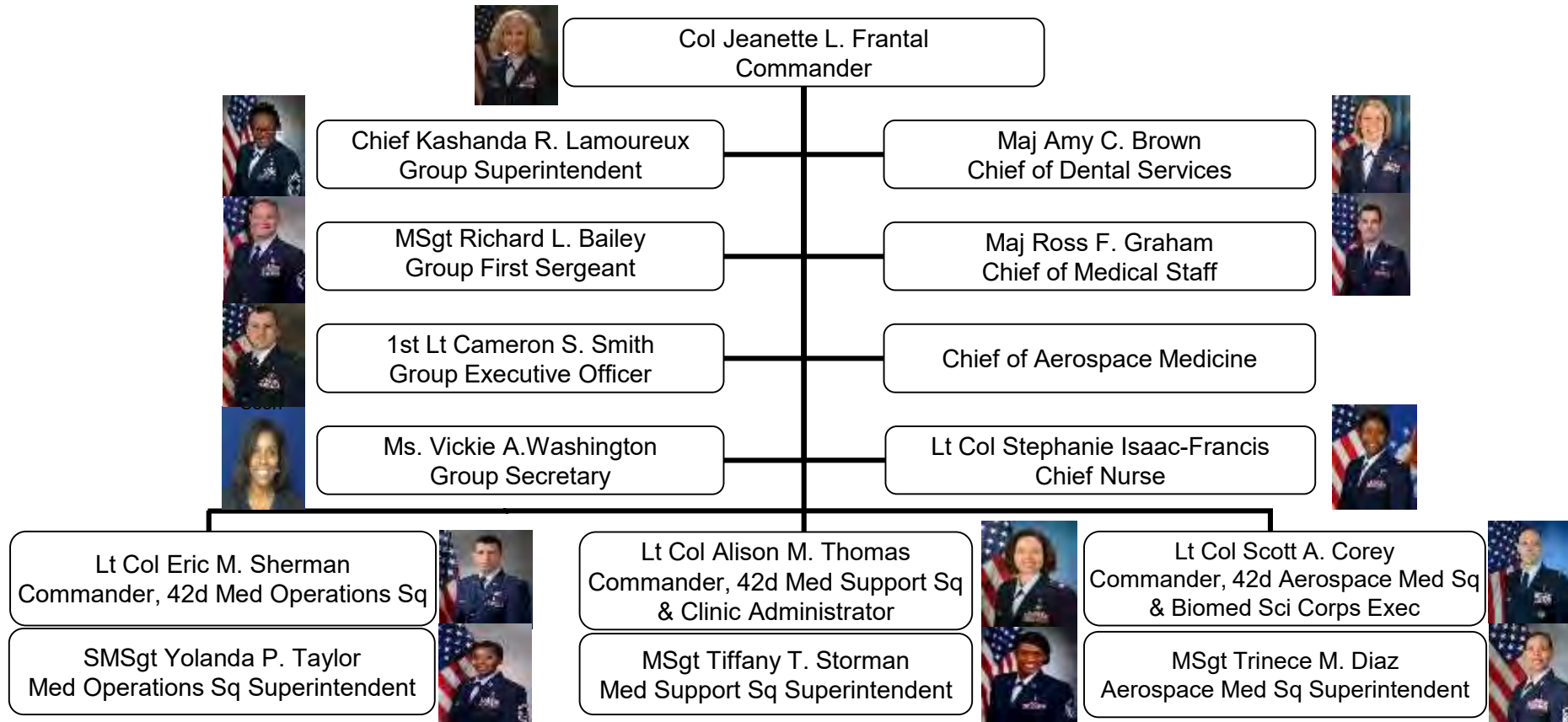
42d Medical Group Mission and Vision

- **Mission:** Provide Trusted Care to Support Training and Education while Enhancing Human Performance for all we Serve
 - **Vision:** Inspired Staff...Safe and Healthy Culture...Trained and Ready Force
- We are the “Trusted Care Guardians”!





42 MDG Leadership





42d Medical Group Scope of Services

▪ Enrollment:

- MTF Enrollees: 14,604
 - Active Duty: 3,268
 - Active Duty Family Members: 4,754
 - Retirees: 2,622
 - Retiree Family Members: 3,960
- Max Capacity: 15,265
- Percentage: 95%

- *Must See Population: ~10,000* (*SOS, OTS, SNCOA, JAG, ROTC)

Manpower:

	ASGN
Officers	47
Enlisted	110
Civilians	80
Contractors	53
Total	290

▪ Defense Health Program Budget:

- In-House Budget: \$26M
- TRICARE Billed/Paid: \$42M/\$9M

▪ Medical Facility:

- 200,000 square feet, built in 2000

Average Monthly Workload:

Measure	Volume
Patient Visits	6,207
Appt Line Calls	6,121
Prescriptions	27,656
Radiology studies	540
Lab Test	16,282
Referrals	2,500



Community Partners

- Baptist Network
- Jackson Hospital
- HUMANA HSSC
- TRICARE
- Central AL Veterans Healthcare System
- Over 5,000 Network Providers





42d Medical Group Strategic Plan

- Goal #1 – Sustain Combat Ready Airmen (Executing the Mission – Culture of Safety)**
- Achieve IMR rates at 80% or above for all AU, 42 ABW and mission partner personnel
 - Maintain annual RILO currency at 85% and overdue not greater than 3 months
- Goal #3 – Train, educate and mentor to inspire individual and organizational excellence (Leading people/Improving Unit Leadership Engagement/CPI)**
- Offer 6 professional development opportunities held annually, with at least 2 targeting enlisted, 2 targeting officers and 2 targeting civilian employees
 - MDG will host one quarterly morale event
 - Develop standardized RN/4N/LPN clinical orientation by 30 June 2018
- Goal #2 – Foster Trusted Care and Patient Safety built on mutual respect, transparency and Continuous Process Improvement (Executing the Mission/Improving Unit – Culture of Safety/CPI)**
- Two full CPI events annually
 - Ensure monthly squadron leadership involvement in Causal Analysis review
 - Weekly rounding to influence by Executive Team
- Goal #4 – Cultivate patient ownership through Air Force Medical Home focus (Executing the Mission - Culture of Safety)**
- Maintain 100 percent training in AFMH principles for all AFMH team members
 - Maintain AFMH team and provider continuity IAW AF directive (90/70 percent)
 - 80% of patient encounters and T-Cons closed within 72 hours and 100% within 30 days
 - 80% of profiles closed within 3 days and 100% within 5 days



42d Medical Group, Maxwell AFB



42d Medical Support Squadron

***Lt Col Alison M. Thomas
Commander***

***MSgt Tiffany T. Storman
Superintendent***



Services Offered

- Readiness/Commander's Support Staff
 - Deployments, Exercise planning, Personnel processing
- Logistics
 - Med Supplies, Equipment and Facility Management, AFROTC Support
- Pharmacy
 - 6,000 Rx Weekly -- 14th largest in AFMS, Red Cross Vol Program
- Diagnostic & Therapeutics (Rad & Lab)
 - 110K Lab Test/yr; 8,736 X-ray, CT, Ultrasounds/yr, OTS Support
- Information Systems
 - 4A Staffed, Largest Inventory on Maxwell
- Resource Management
 - \$24M O&M, Manpower, Man Day Program, TPC Program, Data Quality
- TRICARE Operations and Patient Administration
 - Patient Focal Point; Benefit Counseling, Patient Travel, MEB, Referrals



Accomplishments

- 17 Deployed Personnel over last year (5 currently; 2 pending for P1)
- Customer Pharmacy Operations Center, Brand 2 Generic use Top 10% in AF!
- Simultaneously completed Windows 10 Migration and DEE migration --#1 in AETC
- Updated Atrium Patient Seating – 3 year project
- #2 AETC/ #5 AF for Outpatient TPC FY18
- Air University Airmen of the Year – SrA Andrew Hendrix
- 42 ABW SNCO and Systems Team of the Year
- AETC Cat III Non-Supervisor Civ of the Year – Ms. Sharon Lewis



Opportunities



- OTS Lab draw-additional clinic assistance required for OTS draws
- Civilian hiring program
 - Special pay
- HQ AFROTC support
- Managed Care support contractor
 - Claims processing
- Capturing workload from must sees



Readiness Training Update

By Exception – Only AFSC not 100% Listed

CMRP Stats a/o 10 Apr 2019

AFSC	PSNL	CAT 1	CAT 2
42G	3	78.57%	-----
46N	5	96.43%	0.00%
48G/R	2 / 1	100.00%	20.00%
4A1	1	-----	75.00%
4C0	6	84.06%	100.00%
4E0	8	-----	87.50%
4J0	2	50.00%	-----
4N0	27 / 8	37.16%	31.81%
4P0	11 / 1	100%	50.00%
4Y0	11	90.91%	-----



Readiness Training Update

AFSCs with Gap Analysis

AFSC	AFSC GAP - Solution
42G	CAT I - Advanced Clinical Practice: Urgent/Emergent and Inpatient Care – CSTARS CAT II – Deployed Care Concepts: Inpatient Care – CSTARS CAT II – Deployed Care Concepts: Initial Management of Acute Musculoskeletal Trauma – CSTARS CAT II – Trauma Management and Life Support: Advanced Field Stabilization - CSTARS
43P	CAT I - Inpatient Pharmacy Services - TDY
43T	CAT II – Blood Services – Thawing – TDY CAT II – Microbiology Services – Exams – TDY CAT II – Microbiology Services – Cultures – TDY CAT II – Biological Warfare (BW) Tasks - TDY
44F	CAT II – Deployed Care concepts: Inpatient Setting – TDY or CSTARS
46Y3H	CAT II – Evaluate and Treat Traumatic Brain Injury - TDY
4T0X1	CAT II – Blood Services – Thawing – TDY CAT II – Microbiology Services – Exams – TDY CAT II – Microbiology Services – Cultures – TDY CAT II – Biological Warfare (BW) Tasks - TDY



42d Medical Group, Maxwell AFB



42d Aerospace Medicine Squadron

***Lt Col Scott A. Corey
Commander***

***MSgt Trinece M. Diaz
Superintendent***



Services Offered

- Bioenvironmental Engineering
 - HAZMAT, Occ/Environmental Health, RP, H₂O Testing, Emergency Response
- Dental
 - General Dentistry, Oral Surgery, Periodontics, Endodontics, Prosthodontics, Dental Investigations
- Aerospace & Operational Medicine
 - Active/Inactive flying status; Trainee Health; BOMC; Field Response Tm
- Optometry Flight
 - Primarily AD - Dependent/Retiree Space A; Refractive Surgery Pre/Post-Op
- Public Health
 - IMR Rate; FVA; Health Promotion/Dietician; Tobacco Cessation; Deployment Clearance



Accomplishments

- #1/11 AETC Respiratory Protection metrics
- AWC RCS trip prep – cleared 242 students/948 IMR deficiencies/22 nations
- First ever OTS Tuberculosis Screening Program
- Inter-Fly Agreements w/ 23 FTS & CAP USAF
- BOMC = 2 Day TAT on PHAs; DHRAs up 35%
- 8 Gp, 2 Wg, 1 NAF, 1 AETC, 1 AFMS, 2 BTZ winners



Opportunities

- Guard/Reserve Members Seeking Dental Treatment
- SGP Position Vacant Since May '18
- ROTC Medical Support
- Complex Mission Partner/Sister Service/International Empanelment
- CIPC Process Improvement/Upgrades
- Transform Active Duty Care - Operational Medicine Squadron



42d Medical Group, Maxwell AFB



42d Medical Operations Squadron

***Lt Col Eric M. Sherman
Commander***

***SMSgt Yolanda P. Taylor
Superintendent***



Services Offered

- Mental Health Flight
 - Mental Health Clinic
 - Alcohol and Drug Abuse Prevention and Treatment (ADAPT) Clinic
 - Family Advocacy Program (FAP)
 - Educational and Developmental Intervention Services (EDIS)

- Pediatric Flight
 - Pediatric Clinic
 - Immunizations Clinic

- Physical Therapy Flight
 - Physical Therapy Clinic
 - Chiropractic Clinic

- Family Health Flight
 - Three Family Health Teams: Hercules, Eagle & Raptor
 - Women's Health Team
 - Behavioral Health Optimization (BHOP) Team



Accomplishments

- Family Health scribes
- PT Integrated in Leadership Development Course
- Chiropractor saves \$270K in network referrals
- Intensive Outpatient Program in Mental Health
- MH Outreach



Opportunities

- Operational Medicine clinic
 - Maximizing community resources (AD only clinic)
- Supporting ROTC mission
- Maximizing RESET



42d Medical Group, Maxwell AFB



42d Medical Group

***Lt Col Eric M. Sherman
Chief of Medical Staff***



Services Offered

- Patient Safety
- Quality
- Credentialing
- Group Practice Management
- Medical Management (2 Healthcare Integrators, 3 Case Managers, 3 Disease Managers, Utilization Manager, EFMP RN/4A)



Open Encounters

% Encounters Closed in 72 business hrs (as of 8 Feb 19)

Number of Encounters Open Beyond 30 Days (as of 8 Feb 19)

Clinic / Team		Jan-18	Feb-18	Mar-18	Apr-18	May-18	Jun-18	Jul-18	Aug-18	Sep-18	Oct-18	Nov-18	Dec-18	Jan-19
Guardian's Overall		95	95	95	96	95	93	91	96	97	95	96	91	95
Family Health / Peds	Eagle	95	94	90	94	81	93	89	96	97	97	97	92	93
	Hercules	84	84	91	94	93	95	95	94	95	91	89	89	94
	Raptor	98	98	97	93	94	78	81	94	90	99	99	94	93
	BHOP	99	100	99	98	99	100	99	100	98	99	97	87	100
	Pediatrics	98	99	94	99	99	99	80	92	97	97	95	93	97
Specialties	Women's Health	100	100	100	100	100	100	100	100	100	99	100	100	100
	Chiropractic	96	100	100	99	100	100	99	100	98	100	100	99	100
	Mental Health	98	96	98	97	99	99	97	98	97	80	83	80	87
	ADAPT	100	100	100	98	99	100	100	98	100	100	100	92	100
	Optometry	100	99	98	99	96	99	100	100	100	100	100	99	100
	PT	98	93	97	95	89	96	94	95	96	96	95	97	100
Nutritional Medicine	100	100	100	100	100	99	100	100	100	100	100	97	100	
Fit Med	Flight Medicine	95	98	94	96	91	94	94	99	100	99	97	92	99
	Trainee Health	94	83	91	97	95	88	86	99	98	85	98	84	93
	Hearing Conservation	68	100	100	90	98	90	99	97	99	99	100	92	100
	BOMC	88	89	95	81	98	100	100	100	97	100	100	91	100

Clinic/Team		Dec-17	Jan-18	Feb-18	Mar-18	Apr-18	May-18	Jun-18	Jul-18	Aug-18	Sep-18	Oct-18	Nov-18	Dec-18
Guardian's Overall		0	0	0	0	0	0	0	0	0	0	0	0	0
Family Health / Peds	Eagle	0	0	0	0	0	0	0	0	0	0	0	0	0
	Hercules	0	0	0	0	0	0	0	0	0	0	0	0	0
	Raptor	0	0	0	0	0	0	0	0	0	0	0	0	0
	BHOP	0	0	0	0	0	0	0	0	0	0	0	0	0
	Pediatrics	0	0	0	0	0	0	0	0	0	0	0	0	0
Specialties	Women's Health	0	0	0	0	0	0	0	0	0	0	0	0	0
	Chiropractic	0	0	0	0	0	0	0	0	0	0	0	0	0
	Mental Health	0	0	0	0	0	0	0	0	0	0	0	0	0
	ADAPT	0	0	0	0	0	0	0	0	0	0	0	0	0
	Optometry	0	0	0	0	0	0	0	0	0	0	0	0	0
	Nutritional Medicine	0	0	0	0	0	0	0	0	0	0	0	0	0
PT	0	0	0	0	0	0	0	0	0	0	0	0	0	
Fit Med	Flight Medicine	0	0	0	0	0	0	0	0	0	0	0	0	0
	Trainee Health	0	0	0	0	0	0	0	0	0	0	0	0	0
	BOMC	0	0	0	0	0	0	0	0	0	0	0	0	0
	Hearing Conservation	0	0	0	0	0	0	0	0	0	0	0	0	0

Red = Below 80% (Standard is 80% closed w/in 72 busine

Yellow = Below 90% (Approaching below standard)

Red = Greater than 0 (Standard is no open encounters beyond 30 days)



Accomplishments

- Led RM / PS CIPC breach response
- **Right Sized PCM empanelments**
- Multiple clinical CPIs (**BOMC, Open Tcons**, Mammogram, CLR management, Open Encounters)
- Asplenia tracking sustainment in Carepoint, AF level improvement
- EFMP office
 - No command select reassignments or delays
 - AU EFMP digital system and OTS screening



GPM: Enrollment

- 42 Medical Group: Eligible vs Assigned Beneficiaries
 - Eligible population include Tricare Select, Reserve Select & TriCare for life. There are 37K eligible in this Prime Service Area (PSA).
 - Assigned: As of 10 January 2019 there are 13,775 assigned beneficiaries, a decrease of 1039 since January 2018.

- **MTF Capacity** 15,238 **Percent Fill** 90%
- **Family Health** 10,138 97%
- **Pediatrics** 3,250 88%
- **Flight Medicine** 1,100 53%
- **Trainee Health** 750 61%



Right Sizing Initiative

- DHA goal: PCM enrollment between 1100 and 1300 w/decrements
- Phase I: May – Aug 2018
 - Submitted Service Change Request to AFMOA
 - Moved Pediatric patients (≥ 16 y/o) from Peds to Family Health (FH)
 - Closed Peds to new enrollments
 - Closed FH to new Retiree/RFM new enrollments
 - Allowed retirees ≥ 63 y/o to move to civ PCM
 - Allowed retired FMs to move to civ PCM
 - Targeted offer to non-AD pts w/Rub 0/1/5 to move to civ PCM



Right Sizing Initiative

- Phase II: Sep – Dec 2018
 - Allowed non-AD Peds & FH pts to move to civ PCM
 - Reopened Peds to new enrollments
 - Reopened Retiree/RFM new enrollments for FH
- Conclusion
 - DHAPI PCM enrollment targets met
 - Poised to shift to AD unit enrollments in new OMRS w/AD empanelment of approx. 700 pts/PCM.



Compliance Program Schedules

- Unit Effectiveness Inspection – September 2019
- The Joint Commission
 - Replaced Accreditation Association for Ambulatory Health Care (AAAHC)
 - Initial Survey July 2016
 - Survey expected Spring 2019



CPI Event – Tackling Telephone Consults

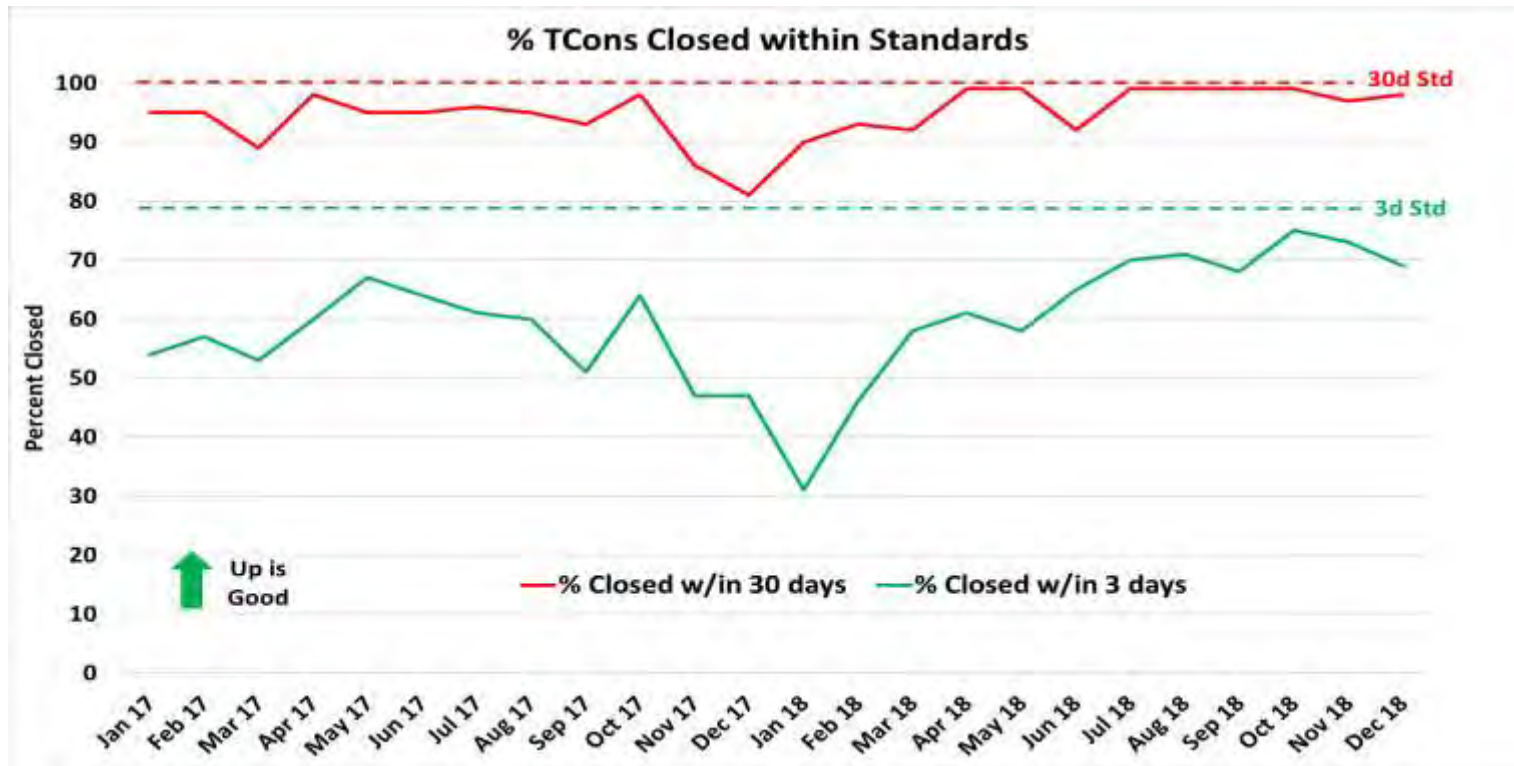
- **Problem Statement:**
 - MDG not meeting Tcon closure 3 day standard
 - As of July 2017, approx. 1K Tcons open over a time frame stretching back >1 year, recurring cyclical problem

- **Solution:**
 - Implemented wkly open Tcon report to clinics & exec staff
 - Safety down day to address Tcon backlog
 - CPI team for Tcons/CLRs addressed inefficiency issues ranging in variety of ways such as
 - Implementing standardized questionnaires for common Tcon calls
 - Implementing RN medication refill guide
 - Implementing new CLR management system
 - Used MPA man days to augment RN staffing during busy season (winter/spring)

- **Results:**
 - Steady state snapshot of open Tcons each week shows reduction of open Tcons by 51%
 - Tcons open >30 days rare



CPI Event – Tackling Telephone Consults

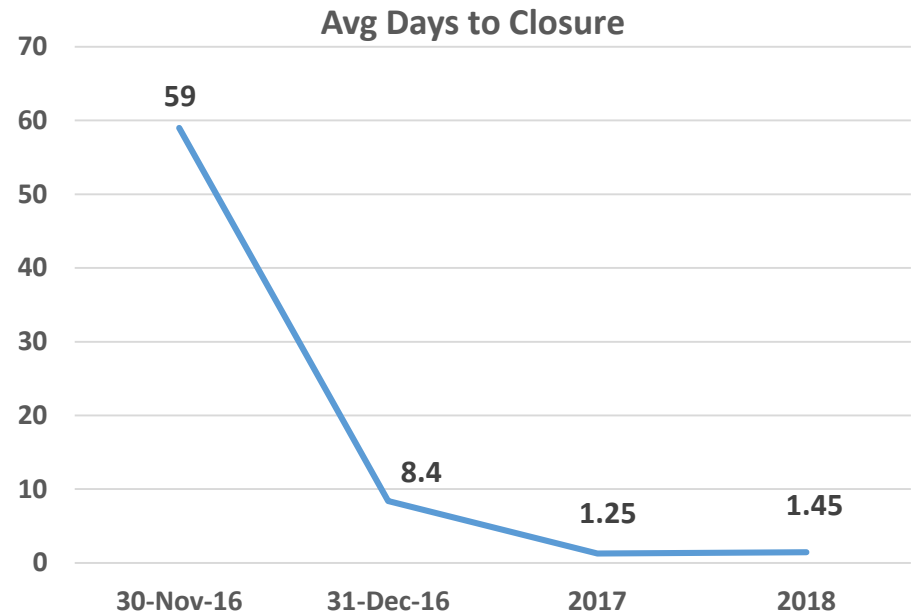


CPI implemented (Jul 17 – Jan 18)



CPI Event – Base Operational Medicine Clinic

- In November 2016, BOMC at the 42d Medical Group workflow identified a delay in Primary Care Manager completion of the patient Preventative Health Assessment with the accompanying Mental Health Assessment, averaging 59 days to close. In December 2016, BOMC performed all PHAs and MHAs, reducing the closure rate to 8.4 days and in December 2018 reduced to 1.45 days.





Opportunities

- Spring EFMP surge
- Civilian GS hiring delays
- MTF re-organization of squadrons



42d Medical Group, Maxwell AFB



42d Medical Group

Lt Col Stephanie Isaac-Francis
Chief Nurse



Education and Training Accomplishments



- Transition from AHA to ARC Healthcare Provider/Basic CPR/AED
 - 11 Sites supported

- Self Aid Buddy Care Instructor Training

- Improved training/simulation equipment room

- Training Affiliation Program active (4/1 pending)

- Shadow Program

- SharePoint initiated for course sign-up



Education and Training Opportunities



- Stretched Resources: 1 MDOS 4N; 1 UTM; Nurse Educator Hired
- Establishing civilian partnership to meet readiness requirements



Questions



POC: CCE

Part H: MTF Portfolio (Full)

42ND MEDICAL GROUP – MAXWELL

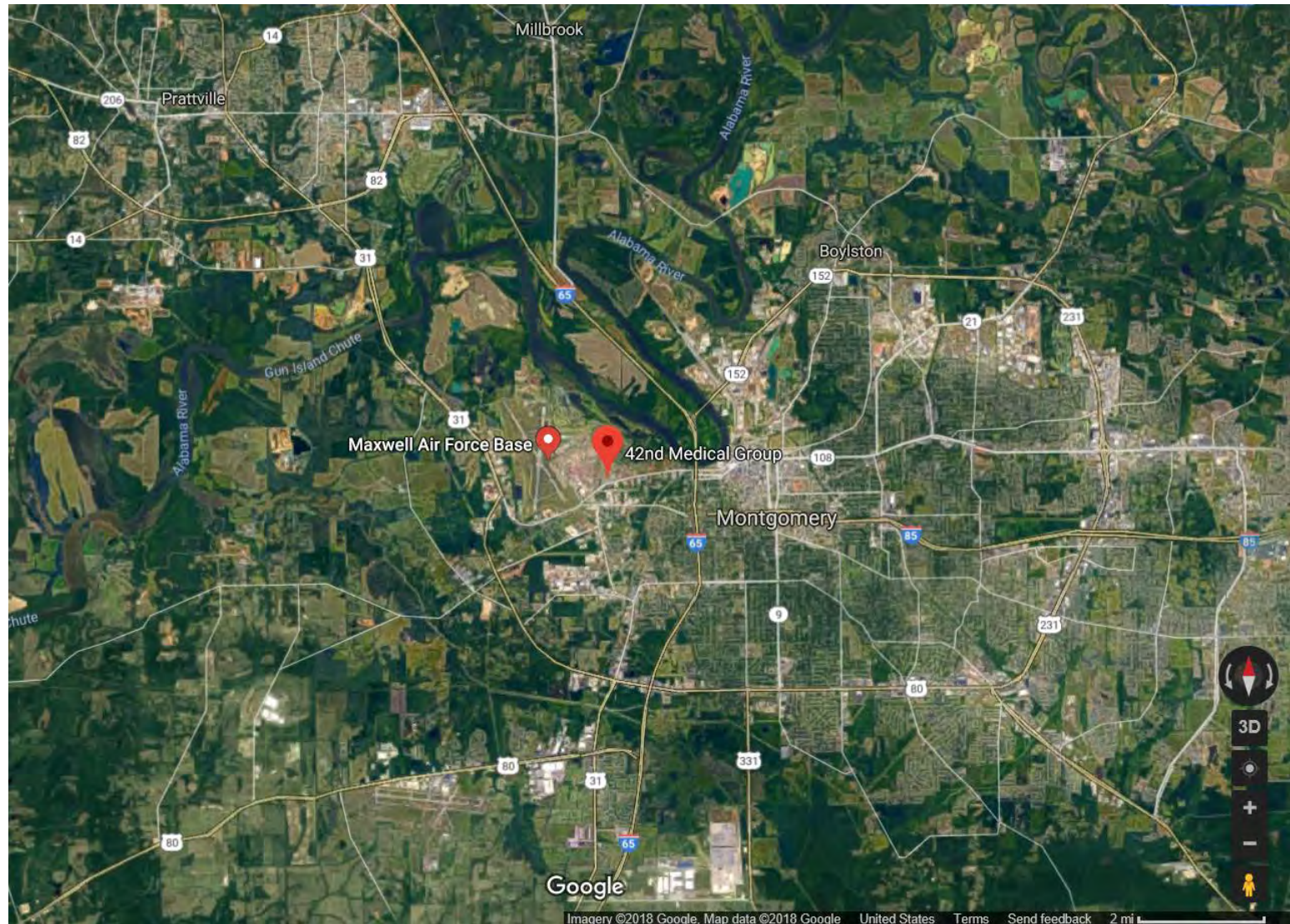


Table of Contents

<u>Section</u>	<u>Slide #</u>
Overview.....	<u>3</u>
Inpatient Care.....	<u>4</u>
Ambulatory Care.....	<u>7</u>
Pharmacy.....	<u>21</u>
Radiology.....	<u>28</u>
Laboratory.....	<u>33</u>
Staffing.....	<u>38</u>
Eligible Population and Enrollment.....	<u>43</u>

Maxwell – Overview

❑ # of Buildings and Min/Max Age¹: 1, 19

❑ Avg # of Encounters per day²:

Tmt DMIS ID	Tmt DMIS ID Name	2014	2015	2016	2017	2018
0004	AF-C-42nd MEDGRP-MAXWELL	462	506	510	488	422

❑ ER or Immediate Care³: No

¹ Source: DHA / Facilities Management Division

² Source: M2 CAPER, MEPRS B only, ER (BIA) and Immediate Care (BHI) omitted, Monday-Friday only

³ Source: M2 CAPER, ER (BIA) or Immediate Care (BHI) coded

Inpatient Care

Maxwell – Prime/Plus Enrollment Inpatient Care¹

0004 AF-C-42nd MEDGRP-MAXWELL Prime/Plus Enrollees Treated in Direct Care										
Product Line	Tmt DMIS ID Name	FY 2016			FY 2017			FY 2018		
		DC Disps	DC CMI	DC Cost per RWP ³	DC Disps	DC CMI	DC Cost per RWP ³	DC Disps	DC CMI	DC Cost per RWP ³
MED	AMC BAMC-FSH				3	1.1900	\$ 10,795			
SURG	ACH MARTIN-BENNING	3	1.7446	\$ 8,104						
	AMC BAMC-FSH				2	1.5291	\$ 14,504			
OB	ACH MARTIN-BENNING	2	0.5571	\$ 13,886				1	0.5200	\$ 15,901
NEWBORN	ACH MARTIN-BENNING	2	0.2041	\$ 22,325						
MH	ACH MARTIN-BENNING				7	0.4179	\$ 20,871	9	0.5408	\$ 14,644
Total/Overall		11	0.7671	\$ 9,898	15	0.8186	\$ 14,548	18	0.7357	\$ 13,107

0004 AF-C-42nd MEDGRP-MAXWELL Prime/Plus Enrollees Treated in Purchased Care									
Product Line	FY 2016			FY 2017			FY 2018		
	PC Adms	PC CMI	PC Paid per RWP ²	PC Adms	PC CMI	PC Paid per RWP ²	PC Adms	PC CMI	PC Paid per RWP ²
MED	252	0.8157	\$ 7,839	210	0.9217	\$ 7,522	236	0.8350	\$ 7,944
SURG	196	2.0654	\$ 7,370	191	2.3306	\$ 7,719	138	2.4580	\$ 7,705
OB	214	0.5677	\$ 7,664	200	0.5619	\$ 7,906	218	0.5600	\$ 8,253
NEWBORN	203	0.4549	\$ 8,249	183	0.3060	\$ 7,834	175	0.6586	\$ 8,760
MH	9	0.5773	\$ 7,087	5	0.6214	\$ 6,989	12	0.5075	\$ 7,634
Total/Overall	874	0.9490	\$ 7,625	789	1.0268	\$ 7,703	779	1.0009	\$ 8,007

¹ Source: Direct Care: MDR SIDR (Detail truncated for low volume; Total/Overall includes truncated volume); Purchased Care: MDR TED-Institutional. Prime/Plus enrolled to the Parent Site. Includes "fix" to newborn enrollment information.

² Purchased Care includes 13% increase for overhead burdening.

³ FY16-17 Direct Care costs based on respective FY MEPRS expenses; FY18 based on FY17 costs, adjusted for inflation.

Maxwell – Prime/Plus Enrollment Inpatient Care¹ – AD Only

0004 AF-C-42nd MEDGRP-MAXWELL Prime/Plus Enrollees Treated in Direct Care - AD ONLY										
Product Line	Tmt DMIS ID Name	FY 2016			FY 2017			FY 2018		
		DC Disps	DC CMI	DC Cost per RWP ³	DC Disps	DC CMI	DC Cost per RWP ³	DC Disps	DC CMI	DC Cost per RWP ³
MED	AMC BAMC-FSH				2	1.5216	\$ 10,980			
SURG	ACH MARTIN-BENNING	3	1.7446	\$ 8,104						
MH	ACH MARTIN-BENNING				7	0.4179	\$ 20,871	8	0.5466	\$ 15,107
Total/Overall		5	1.2617	\$ 8,953	13	0.7684	\$ 14,415	14	0.7776	\$ 14,034

0004 AF-C-42nd MEDGRP-MAXWELL Prime/Plus Enrollees Treated in Purchased Care - AD ONLY									
Product Line	FY 2016			FY 2017			FY 2018		
	PC Adms	PC CMI	PC Paid per RWP ²	PC Adms	PC CMI	PC Paid per RWP ²	PC Adms	PC CMI	PC Paid per RWP ²
MED	28	0.7610	\$ 6,351	19	0.7605	\$ 7,209	28	0.7641	\$ 8,289
SURG	50	1.9352	\$ 6,854	41	2.2790	\$ 6,576	19	2.5126	\$ 7,299
OB	49	0.6150	\$ 7,763	51	0.5511	\$ 8,127	49	0.6009	\$ 8,130
MH	0	0.0000	\$ 0	0	0.0000	\$ 0	2	0.3804	\$ 8,557
Total/Overall	127	1.1669	\$ 6,967	111	1.2252	\$ 6,964	98	1.0136	\$ 7,768

¹ Source: Direct Care: MDR SIDR (Detail truncated for low volume; Total/Overall includes truncated volume); Purchased Care: MDR TED-Institutional. Prime/Plus enrolled to the Parent Site. Includes "fix" to newborn enrollment information.

² Purchased Care includes 13% increase for overhead burdening.

³ FY16-17 Direct Care costs based on respective FY MEPRS expenses; FY18 based on FY17 costs, adjusted for inflation.

Ambulatory Care

Maxwell – Direct Care Appointments by Appointment Status¹

Appointment Status	0004 - AF-C-42nd MEDGRP-MAXWELL					
	2016 - # Appts	2016 - % Total	2017 - # Appts	2017 - % Total	2018 - # Appts	2018 - % Total
1 Pending					1	0%
2 Kept	62,925	41%	60,964	41%	59,992	45%
3 Canceled	19,144	12%	17,588	12%	17,118	13%
4 No Show	4,481	3%	4,720	3%	4,883	4%
5 Walk In	6,062	4%	7,828	5%	10,664	8%
6 Sick Call	160	0%	1	0%	370	0%
7 Telcon	60,886	40%	55,946	37%	40,469	30%
8 LWOBS	139	0%	99	0%	103	0%
9 Admin	30	0%	17	0%	29	0%
10 Occ-Svc	113	0%	2,211	1%	277	0%
Grand Total	153,940		149,374		133,906	

¹ Source: M2 Appointment, includes MEPRS Codes B**, FBI, and FBN.

Maxwell – Direct Care Appointments by Appointment Type¹

Appt Type Group	0004 - AF-C-42nd MEDGRP-MAXWELL					
	2016 - # Appts	2016 - % Total	2017 - # Appts	2017 - % Total	2018 - # Appts	2018 - % Total
24HR	21,521	14%	20,377	14%	24,954	19%
ACUTE	333	0%	4	0%	5	0%
FTR	49,495	32%	48,873	33%	45,865	34%
GRP	704	0%	1,233	1%	937	1%
PROC	6,545	4%	7,028	5%	4,592	3%
ROUT	741	0%	2,660	2%	2,614	2%
SPEC	3,402	2%	3,805	3%	8,993	7%
T-CON*	65,131	42%	60,504	41%	42,129	31%
WELL	6,068	4%	4,890	3%	3,817	3%
Grand Total	153,940		149,374		133,906	

¹ Source: M2 Appointment, includes MEPRS Codes B**, FBI, and FBN.

Maxwell – FY18 Direct Care Ambulatory Encounters¹

PRODUCT LINE	0004 - AF-C-42nd MEDGRP-MAXWELL			
	Seen	Telcon	Total	% of Total
IMSUB	674	25	699	0.63%
MH	6,273	2,604	8,877	7.95%
OBGYN	2,370	1,746	4,116	3.68%
OPTOM	3,491	71	3,562	3.19%
ORTHO	8,384	14	8,398	7.52%
OTHER	2,559	0	2,559	2.29%
PC	47,251	36,255	83,506	74.75%
TOTAL	71,002	40,715	111,717	

¹ Source: M2 CAPER, includes MEPRS Codes B**, FBI, and FBN.

Maxwell – Direct Care Ambulatory Surgery¹

This facility did not report any workload coded Same Day Surgery.

¹ Source: M2 CAPER, based on the Same Day Surgery Flag. Based on Parent Tmt DMIS ID.

² Based on the Optum grouping (e.g., CPT codes 20000-29999 are for the Musculoskeletal System). Only the 1st procedural CPT investigated.

Maxwell – FY18 Direct Care Ambulatory Surgery¹

Top 20 Procedure Codes

This facility did not report any workload coded Same Day Surgery.

¹ Source: M2 CAPER, based on the Same Day Surgery Flag. Based on Parent Tmt DMIS ID. Only Procedure 1 analyzed. Prov Agg Total RVU is for the entire encounter.

Maxwell – Ambulatory Workload and Cost¹

DC = work performed in the MTF; PC = work performed by a provider within the site's PRISM (parent)

	Product Line	Encounters/Services		Average RVU		Cost/Paid per RVU	
		DC	PC	DC	PC	DC	PC ²
		Encounters	Services	RVU / Encounters	RVU / Services	Full Cost / RVU	Amount Paid / RVU
FY 2018 ³	PC	83,506	108,691	1.34	0.98	\$ 156	\$ 55
	OBGYN	4,116	10,054	1.99	1.63	\$ 128	\$ 61
	MH	8,877	37,773	2.16	0.73	\$ 139	\$ 108
	OTHER	15,218	206,558	2.74	1.15	\$ 52	\$ 59
	TOTAL	111,717	363,076	1.62	1.07	\$ 129	\$ 61
FY 2017 ³	PC	95,846	108,810	1.16	0.92	\$ 150	\$ 57
	OBGYN	3,625	13,012	2.48	1.53	\$ 122	\$ 62
	MH	9,096	28,616	1.84	0.90	\$ 134	\$ 110
	OTHER	17,878	181,625	2.43	1.08	\$ 50	\$ 61
	TOTAL	126,445	332,063	1.42	1.03	\$ 123	\$ 64
FY 2016 ³	PC	103,466	105,830	1.16	0.89	\$ 139	\$ 69
	OBGYN	3,468	10,951	2.72	1.59	\$ 91	\$ 71
	MH	6,296	14,200	2.00	1.80	\$ 144	\$ 88
	OTHER	16,881	195,265	2.69	1.06	\$ 45	\$ 73
	TOTAL	130,111	326,246	1.44	1.06	\$ 114	\$ 73

¹ Source: DC = M2 CAPER; PC = MDR TED Non-Institutional (using “ambulatory” defined by eMSM workgroup; drug costs included; OHI omitted). Includes all beneficiaries. Use caution when making comparisons between DC and PC. Encounters and Services are not comparable. They are provided to give a sense of volume.

² Purchased Care includes 13% increase for overhead burdening.

³ FY16-17 Direct Care costs based on respective FY MEPRS expenses; FY18 based on FY17 costs, adjusted for inflation.

Maxwell – FY18 Direct and Purchased Care Ambulatory Workload by Enrollment Category¹

Work performed by Maxwell (parent)³:

AF-C-42nd MEDGRP-MAXWELL - FY 2018 DIRECT CARE AMBULATORY WORKLOAD																					
Product Line	Prime-Site			Reliant			Prime-Other			Plus			TFL			Not Enrolled			Total		
	Encs	Avg RVU	Cost/RVU	Encs	Avg RVU	Cost/RVU	Encs	Avg RVU	Cost/RVU	Encs	Avg RVU	Cost/RVU	Encs	Avg RVU	Cost/RVU	Encs	Avg RVU	Cost/RVU	Encs	Avg RVU	Cost/RVU
PC	73,543	1.32	\$ 151	2,358	1.48	\$ 192	3,541	1.66	\$ 196	3	2.07	\$ 166	50	0.69	\$ 135	4,011	1.39	\$ 180	83,506	1.34	\$ 156
OBGYN	3,761	2.03	\$ 128	81	1.77	\$ 130	123	1.39	\$ 138	0	0.00	\$ 0	1	0.00	\$ 0	150	1.54	\$ 134	4,116	1.99	\$ 128
MH	7,869	2.17	\$ 138	122	1.93	\$ 137	463	1.65	\$ 142	0	0.00	\$ 0	30	3.16	\$ 128	393	2.53	\$ 162	8,877	2.16	\$ 139
OTHER	11,740	3.02	\$ 54	887	1.83	\$ 43	1,613	1.62	\$ 32	3	5.08	\$ 60	41	4.30	\$ 60	934	1.91	\$ 41	15,218	2.74	\$ 52
TOTAL	96,913	1.62	\$ 127	3,448	1.60	\$ 144	5,740	1.64	\$ 145	6	3.58	\$ 91	122	2.51	\$ 90	5,488	1.56	\$ 148	111,717	1.62	\$ 129

↑
24% MCSC

Work performed by a provider within Maxwell's PRISM (parent)²:

AF-C-42nd MEDGRP-MAXWELL - FY 2018 PURCHASED CARE AMBULATORY WORKLOAD																					
Product Line	Prime-Site			Reliant			Prime-Other			Plus			TFL			Not Enrolled			Total		
	Svcs	Avg RVU	Paid/RVU	Svcs	Avg RVU	Paid/RVU	Svcs	Avg RVU	Paid/RVU	Svcs	Avg RVU	Paid/RVU	Svcs	Avg RVU	Paid/RVU	Svcs	Avg RVU	Paid/RVU	Svcs	Avg RVU	Paid/RVU
PC	38,895	0.97	\$ 50	1,297	0.54	\$ 143	19,303	1.03	\$ 70	11	0.98	\$ 26	10,608	0.97	\$ 62	38,577	0.99	\$ 47	108,691	0.98	\$ 55
OBGYN	4,554	2.20	\$ 60	53	2.93	\$ 80	1,124	1.14	\$ 65	0	0.00	\$ 0	315	1.14	\$ 46	4,008	1.14	\$ 61	10,054	1.63	\$ 61
MH	32,206	0.57	\$ 134	20	3.19	\$ 39	1,453	2.22	\$ 49	0	0.00	\$ 0	123	3.14	\$ 41	3,971	1.39	\$ 60	37,773	0.73	\$ 108
OTHER	142,458	1.13	\$ 60	1,180	1.28	\$ 56	23,169	1.17	\$ 60	0	0.00	\$ 0	8,569	1.32	\$ 59	31,182	1.16	\$ 52	206,558	1.15	\$ 59
TOTAL	218,113	1.04	\$ 64	2,550	0.95	\$ 82	45,049	1.14	\$ 63	11	0.98	\$ 26	19,615	1.14	\$ 60	77,738	1.09	\$ 51	363,076	1.07	\$ 61

↑
83% MCSC

¹ Source: DC = M2 CAPER; PC = MDR TED Non-Institutional (using "ambulatory" defined by eMSM workgroup; drug costs included; OHI omitted). Includes all beneficiaries. Use caution when making comparisons between DC and PC. Encounters and Services are not comparable. They are provided to give a sense of volume.

² Purchased Care includes 13% increase for overhead burdening.

³ Direct Care costs based on FY17 MEPRS expenses, adjusted for inflation.

Maxwell – FY17 Direct and Purchased Care Ambulatory Workload by Enrollment Category¹

Work performed by Maxwell (parent)³:

AF-C-42nd MEDGRP-MAXWELL - FY 2017 DIRECT CARE AMBULATORY WORKLOAD																						
Product Line	Prime-Site			Reliant			Prime-Other			Plus			TFL			Not Enrolled			Total			
	Encs	Avg RVU	Cost/RVU	Encs	Avg RVU	Cost/RVU	Encs	Avg RVU	Cost/RVU	Encs	Avg RVU	Cost/RVU	Encs	Avg RVU	Cost/RVU	Encs	Avg RVU	Cost/RVU	Encs	Avg RVU	Cost/RVU	
PC	87,651	1.13	\$ 147	2,250	1.51	\$ 177	2,704	1.49	\$ 188	1	0.55	\$ 282	75	0.45	\$ 154	3,165	1.48	\$ 157	95,846	1.16	\$ 150	
OBGYN	3,348	2.54	\$ 121	48	1.89	\$ 115	74	1.35	\$ 135	0	0.00	\$ 0	3	4.21	\$ 93	152	1.83	\$ 135	3,625	2.48	\$ 122	
MH	7,605	1.87	\$ 132	400	1.65	\$ 148	543	1.36	\$ 143	0	0.00	\$ 0	28	2.62	\$ 121	520	1.92	\$ 143	9,096	1.84	\$ 134	
OTHER	14,644	2.51	\$ 53	875	1.74	\$ 38	1,411	2.17	\$ 22	1	1.67	\$ 0	47	3.15	\$ 57	900	2.06	\$ 46	17,878	2.43	\$ 50	
TOTAL	113,248	1.40	\$ 122	3,573	1.59	\$ 135	4,732	1.67	\$ 119	2	1.11	\$ 70	153	1.75	\$ 88	4,737	1.65	\$ 128	126,445	1.42	\$ 123	

↑
26% MCSC

Work performed by a provider within Maxwell's PRISM (parent)²:

AF-C-42nd MEDGRP-MAXWELL - FY 2017 PURCHASED CARE AMBULATORY WORKLOAD																						
Product Line	Prime-Site			Reliant			Prime-Other			Plus			TFL			Not Enrolled			Total			
	Svcs	Avg RVU	Paid/RVU	Svcs	Avg RVU	Paid/RVU	Svcs	Avg RVU	Paid/RVU	Svcs	Avg RVU	Paid/RVU	Svcs	Avg RVU	Paid/RVU	Svcs	Avg RVU	Paid/RVU	Svcs	Avg RVU	Paid/RVU	
PC	40,318	0.94	\$ 52	579	1.03	\$ 156	13,698	1.10	\$ 81	15	0.78	\$ 7	10,860	1.10	\$ 66	43,340	0.80	\$ 48	108,810	0.92	\$ 57	
OBGYN	6,033	2.06	\$ 63	45	2.45	\$ 60	1,501	1.16	\$ 64	0	0.00	\$ 0	123	2.39	\$ 52	5,310	1.02	\$ 60	13,012	1.53	\$ 62	
MH	24,046	0.75	\$ 128	8	2.81	\$ 59	1,157	2.48	\$ 58	0	0.00	\$ 0	125	2.80	\$ 53	3,280	1.33	\$ 73	28,616	0.90	\$ 110	
OTHER	125,276	1.04	\$ 62	783	1.55	\$ 76	19,567	1.09	\$ 63	7	0.95	\$ 49	8,962	1.23	\$ 59	27,030	1.19	\$ 55	181,625	1.08	\$ 61	
TOTAL	195,673	1.02	\$ 66	1,415	1.37	\$ 99	35,923	1.14	\$ 69	22	0.83	\$ 22	20,070	1.18	\$ 62	78,960	0.97	\$ 53	332,063	1.03	\$ 64	

↑
87% MCSC

¹ Source: DC = M2 CAPER; PC = MDR TED Non-Institutional (using "ambulatory" defined by eMSM workgroup; drug costs included; OHI omitted). Includes all beneficiaries. Use caution when making comparisons between DC and PC. Encounters and Services are not comparable. They are provided to give a sense of volume.

² Purchased Care includes 13% increase for overhead burdening.

³ Direct Care costs based on FY17 MEPRS expenses.

Maxwell – Prime Enrollment Ambulatory Care¹ – DIRECT CARE

Tmt Parent Maxwell?	Product Line	Tmt Parent DMIS ID Name	2017					2018				
			Encounters	Enh Total RVU	Full Cost ²	Avg RVU	Cost ² /RVU	Encounters	Enh Total RVU	Full Cost ²	Avg RVU	Cost ² /RVU
YES	PC	AF-C-42nd MEDGRP-MAXWELL	87,651	98,692.60	\$ 14,531,751	1.13	\$ 147	73,543	97,245.38	\$ 14,683,343	1.32	\$ 151
	OBGYN	AF-C-42nd MEDGRP-MAXWELL	3,348	8,515.27	\$ 1,034,452	2.54	\$ 121	3,761	7,626.32	\$ 976,629	2.03	\$ 128
	MH	AF-C-42nd MEDGRP-MAXWELL	7,605	14,245.54	\$ 1,883,789	1.87	\$ 132	7,869	17,087.68	\$ 2,356,950	2.17	\$ 138
	OTHER	AF-C-42nd MEDGRP-MAXWELL	14,644	36,774.28	\$ 1,931,652	2.51	\$ 53	11,740	35,452.37	\$ 1,919,851	3.02	\$ 54
Yes Total			113,248	158,227.69	\$ 19,381,644	1.40	\$ 122	96,913	157,411.75	\$ 19,936,773	1.62	\$ 127
NO	PC	ACH MARTIN-BENNING	168	146.58	\$ 9,790	0.87	\$ 67	111	177.09	\$ 14,182	1.60	\$ 80
	OTHER	ACH MARTIN-BENNING	132	150.07	\$ 16,872	1.14	\$ 112	195	345.49	\$ 29,653	1.77	\$ 86
	OTHER	AF-MC-81st MEDGRP-KEESLER	95	432.94	\$ 53,588	4.56	\$ 124	143	724.77	\$ 92,437	5.07	\$ 128
No Total			2,471	4,665.39	\$ 534,884	1.89	\$ 115	2,771	5,715.76	\$ 735,026	2.06	\$ 129
Total/Overall			115,719	162,893.08	\$ 19,916,528	1.41	\$ 122	99,684	163,127.51	\$ 20,671,798	1.64	\$ 127

¹ Source: Direct Care: M2 CAPER, Prime Enrolled, MEPRS B, FBI, FBN. Data truncated for small volumes. Use caution when making comparisons between DC and PC. Encounters and Services are not comparable. They are provided to give a sense of volume.

² Direct Care costs based on FY17 MEPRS expenses, with FY18 adjusted for inflation.

Maxwell – Prime Enrollment Ambulatory Care¹ – PURCHASED CARE

Product Line	2017					2018				
	# Svcs	Enh Total RVU	Amt Paid ²	Avg RVU	Paid ² / RVU	# Svcs	Enh Total RVU	Amt Paid ²	Avg RVU	Paid ² / RVU
PC	53,511	44,991.67	\$ 2,434,099	0.84	\$ 54	53,295	47,088.15	\$ 2,403,263	0.88	\$ 51
OBGYN	7,568	14,296.41	\$ 806,966	1.89	\$ 56	6,623	11,769.39	\$ 607,137	1.78	\$ 52
MH	25,568	19,281.05	\$ 2,279,263	0.75	\$ 118	33,846	20,302.35	\$ 2,239,408	0.60	\$ 110
OTHER	143,532	152,627.09	\$ 8,670,535	1.06	\$ 57	172,743	193,649.83	\$ 10,217,007	1.12	\$ 53
TOTAL	230,179	231,196.22	\$ 14,190,864	1.00	\$ 61	266,507	272,809.72	\$ 15,466,815	1.02	\$ 57

¹ Source: Purchased Care: MDR TED Non-institutional, Prime Enrolled to the Parent Site (using “ambulatory” defined by eMSM workgroup; drug costs included; OHI omitted). Use caution when making comparisons between DC and PC. Encounters and Services are not comparable. They are provided to give a sense of volume.

² Purchased Care includes 13% increase for overhead burdening.

Maxwell – Direct Care ER/Immed. Care (MEPRS BIA/BHI)¹

This facility did not report any workload in BIA or BHI.

¹ Source: M2 CAPER. Based on Treatment Parent DMIS ID. BIA=Emergency Room (ER); BHI=Immediate Care (IC).

Maxwell – Direct Care ER/IC Disposition Code²

This facility did not report any workload in BIA or BHI.

¹ Numeric values and R are for outpatient encounters; alphanumeric A-G are for inpatient encounters.

² Source: M2 CAPER. Based on Treatment Parent DMIS ID. BIA=Emergency Room (ER); BHI=Immediate Care (IC).

Maxwell – Direct Care ER/IC Top 15 Diagnosis Codes¹ (Reason for being seen)

This facility did not report any workload in BIA or BHI.

Pharmacy

Maxwell – Direct Care Pharmacy¹ by Enrollment Group

PARENT 0004 AF-C-42nd MEDGRP-MAXWELL										
Enr Group	2017					2018				
	# Scripts	Days Supply	Full Cost	Cost / Script	Cost / Day	# Scripts	Days Supply	Full Cost	Cost / Script	Cost / Day
Prime-MTF	128,819	6,750,597	\$ 6,407,577	\$ 50	\$ 0.95	124,986	6,527,110	\$ 5,632,719	\$ 45	\$ 0.86
Prime-MCSC	13,008	813,300	\$ 681,603	\$ 52	\$ 0.84	12,428	777,688	\$ 617,491	\$ 50	\$ 0.79
Reliant	2,330	64,236	\$ 57,645	\$ 25	\$ 0.90	2,602	69,858	\$ 51,347	\$ 20	\$ 0.74
Plus	973	69,501	\$ 38,511	\$ 40	\$ 0.55	1,094	74,218	\$ 38,301	\$ 35	\$ 0.52
Overseas Prime	20	673	\$ 434	\$ 22	\$ 0.65	8	465	\$ 123	\$ 15	\$ 0.26
Desig Prov	3	160	\$ 63	\$ 21	\$ 0.40	4	120	\$ 142	\$ 35	\$ 1.18
Other	167,797	11,500,516	\$ 7,792,599	\$ 46	\$ 0.68	164,124	11,276,626	\$ 7,093,850	\$ 43	\$ 0.63
Grand Total	312,950	19,198,983	\$ 14,978,432	\$ 48	\$ 0.78	305,246	18,726,085	\$ 13,433,973	\$ 44	\$ 0.72

¹ Source: M2 PDTS, Source System D (Direct Care) and C (Clinician Administered Drug).

Maxwell – Direct Care Pharmacy¹ by Enrollment Group

0004 AF-C-42nd MEDGRP-MAXWELL										
Enr Group	2017					2018				
	# Scripts	Days Supply	Full Cost	Cost / Script	Cost / Day	# Scripts	Days Supply	Full Cost	Cost / Script	Cost / Day
Prime-MTF	128,819	6,750,597	\$ 6,407,577	\$ 50	\$ 0.95	124,986	6,527,110	\$ 5,632,719	\$ 45	\$ 0.86
Prime-MCSC	13,008	813,300	\$ 681,603	\$ 52	\$ 0.84	12,428	777,688	\$ 617,491	\$ 50	\$ 0.79
Reliant	2,330	64,236	\$ 57,645	\$ 25	\$ 0.90	2,602	69,858	\$ 51,347	\$ 20	\$ 0.74
Plus	973	69,501	\$ 38,511	\$ 40	\$ 0.55	1,094	74,218	\$ 38,301	\$ 35	\$ 0.52
Overseas Prime	20	673	\$ 434	\$ 22	\$ 0.65	8	465	\$ 123	\$ 15	\$ 0.26
Desig Prov	3	160	\$ 63	\$ 21	\$ 0.40	4	120	\$ 142	\$ 35	\$ 1.18
Other	167,797	11,500,516	\$ 7,792,599	\$ 46	\$ 0.68	164,124	11,276,626	\$ 7,093,850	\$ 43	\$ 0.63
Grand Total	312,950	19,198,983	\$ 14,978,432	\$ 48	\$ 0.78	305,246	18,726,085	\$ 13,433,973	\$ 44	\$ 0.72

¹ Source: M2 PDTS, Source System D (Direct Care) and C (Clinician Administered Drug).

Maxwell – FY18 Direct Care Pharmacy

Top 20 Products Dispensed¹ by # of Scripts and Cost/Day

0004 AF-C-42nd MEDGRP-MAXWELL					
TOP 20 BASED ON VOLUME					
Product Name	Number of Scripts	Days Supply	Full Cost	Cost / script	Cost / Day
SYNTHROID	7,406	611,679	\$ 131,973	\$ 18	\$ 0.22
CETIRIZINE HCL	6,530	509,717	\$ 87,824	\$ 13	\$ 0.17
FLUTICASONE PROPIONATE	6,215	341,841	\$ 105,471	\$ 17	\$ 0.31
ATORVASTATIN CALCIUM	6,124	524,113	\$ 98,177	\$ 16	\$ 0.19
SIMVASTATIN	6,054	530,036	\$ 87,726	\$ 14	\$ 0.17
OMEPRAZOLE	5,868	487,916	\$ 103,618	\$ 18	\$ 0.21
LISINOPRIL	5,382	455,350	\$ 65,875	\$ 12	\$ 0.14
ASPIRIN EC	4,928	429,179	\$ 54,870	\$ 11	\$ 0.13
AMLODIPINE BESYLATE	4,925	417,561	\$ 74,557	\$ 15	\$ 0.18
IBUPROFEN	4,737	97,143	\$ 59,306	\$ 13	\$ 0.61
MONTELUKAST SODIUM	4,174	345,345	\$ 88,055	\$ 21	\$ 0.25
VITAMIN D2	3,764	306,095	\$ 47,742	\$ 13	\$ 0.16
PANTOPRAZOLE SODIUM	3,698	300,320	\$ 77,899	\$ 21	\$ 0.26
CRESTOR	3,613	311,711	\$ 93,647	\$ 26	\$ 0.30
HYDROCHLOROTHIAZIDE	3,572	307,948	\$ 43,628	\$ 12	\$ 0.14
GABAPENTIN	3,277	206,901	\$ 79,007	\$ 24	\$ 0.38
HYDROCODONE-ACETAMINOPHEN	2,928	48,338	\$ 44,120	\$ 15	\$ 0.91
VIAGRA	2,838	214,557	\$ 221,009	\$ 78	\$ 1.03
METOPROLOL SUCCINATE	2,834	242,503	\$ 68,795	\$ 24	\$ 0.28
METFORMIN HCL	2,662	222,054	\$ 35,669	\$ 13	\$ 0.16

0004 AF-C-42nd MEDGRP-MAXWELL					
TOP 20 BASED ON COST PER DAY					
Product Name	Number of Scripts	Days Supply	Full Cost	Cost / script	Cost / Day
PANCREAZE	8	326	\$ 105,323	\$ 13,165	\$ 323.08
CABOMETYX	4	120	\$ 35,920	\$ 8,980	\$ 299.33
IMBRUVICA	4	112	\$ 31,440	\$ 7,860	\$ 280.71
AFINITOR	7	196	\$ 53,856	\$ 7,694	\$ 274.78
MEKINIST	7	210	\$ 39,878	\$ 5,697	\$ 189.89
SPRYCEL	23	690	\$ 125,685	\$ 5,465	\$ 182.15
TAFINLAR	7	210	\$ 34,345	\$ 4,906	\$ 163.55
TECFIDERA	12	360	\$ 45,553	\$ 3,796	\$ 126.54
AVONEX	13	390	\$ 45,863	\$ 3,528	\$ 117.60
COSENTYX (2 SYRINGES)	1	42	\$ 4,322	\$ 4,322	\$ 102.90
GILENYA	12	360	\$ 34,124	\$ 2,844	\$ 94.79
CLEOCIN	1	7	\$ 563	\$ 563	\$ 80.46
ACTEMRA	10	300	\$ 23,567	\$ 2,357	\$ 78.56
BENLYSTA	4	120	\$ 9,401	\$ 2,350	\$ 78.34
COSENTYX PEN	10	360	\$ 26,237	\$ 2,624	\$ 72.88
STELARA	1	90	\$ 6,503	\$ 6,503	\$ 72.26
ENBREL SURECLICK	65	1,922	\$ 130,842	\$ 2,013	\$ 68.08
ENBREL	57	1,648	\$ 107,335	\$ 1,883	\$ 65.13
IMATINIB MESYLATE	25	990	\$ 63,039	\$ 2,522	\$ 63.68
VALCYTE	1	23	\$ 1,460	\$ 1,460	\$ 63.49

¹ Source: M2 PDTS, Source System D (Direct Care) and C (Clinician Administered Drug).

Maxwell – Purchased Care Pharmacy¹ based on “Parent” PRISM Area ID by Enrollment Group

PARENT PRISM 0004 AF-C-42nd MEDGRP-MAXWELL											
Source System	Enrollment Group	2017					2018				
		# Scripts	Days Supply	Paid by TRICARE	Paid / Script	Paid / Day	# Scripts	Days Supply	Paid by TRICARE	Paid / Script	Paid / Day
MCSC (Retail)	Prime-MTF	40,974	897,162	\$ 2,863,589	\$ 70	\$ 3.19	39,650	875,987	\$ 2,491,623	\$ 63	\$ 2.84
	Prime-MCSC	10,574	292,806	\$ 729,690	\$ 69	\$ 2.49	10,854	310,280	\$ 587,685	\$ 54	\$ 1.89
	Reliant	386	9,162	\$ 8,018	\$ 21	\$ 0.88	613	16,728	\$ 29,424	\$ 48	\$ 1.76
	Plus	441	14,689	\$ 26,110	\$ 59	\$ 1.78	365	10,417	\$ 37,445	\$ 103	\$ 3.59
	Overseas Prime	3	25	\$ 17	\$ 6	\$ 0.67	0	0	\$ 0	\$ 0	\$ 0.00
	Desig Prov	0	0	\$ 0	\$ 0	\$ 0.00	1	20	\$ 7	\$ 7	\$ 0.36
	Other	160,343	5,238,684	\$ 8,163,024	\$ 51	\$ 1.56	153,962	5,147,406	\$ 8,037,105	\$ 52	\$ 1.56
MCSC Total		212,721	6,452,528	\$ 11,790,448	\$ 55	\$ 1.83	205,445	6,360,838	\$ 11,183,290	\$ 54	\$ 1.76
Mail Order	Prime-MTF	5,384	440,100	\$ 1,739,117	\$ 323	\$ 3.95	4,568	376,781	\$ 1,686,795	\$ 369	\$ 4.48
	Prime-MCSC	3,425	283,986	\$ 523,946	\$ 153	\$ 1.84	3,062	253,400	\$ 538,869	\$ 176	\$ 2.13
	Reliant	71	5,829	\$ 4,495	\$ 63	\$ 0.77	52	4,812	\$ 12,134	\$ 233	\$ 2.52
	Plus	213	18,098	\$ 14,573	\$ 68	\$ 0.81	165	14,437	\$ 12,096	\$ 73	\$ 0.84
	Overseas Prime	8	720	\$ 569	\$ 71	\$ 0.79	0	0	\$ 0	\$ 0	\$ 0.00
	Other	58,497	4,973,167	\$ 7,167,115	\$ 123	\$ 1.44	53,882	4,568,295	\$ 7,230,581	\$ 134	\$ 1.58
Mail Order Total		67,598	5,721,900	\$ 9,449,814	\$ 140	\$ 1.65	61,729	5,217,725	\$ 9,480,476	\$ 154	\$ 1.82
Grand Total		280,319	12,174,428	\$ 21,240,263	\$ 76	\$ 1.74	267,174	11,578,563	\$ 20,663,766	\$ 77	\$ 1.78

¹ Source: M2 PDTS, Source System M (MCSC) and T (Mail Order). Parent PRISM is a derived field and includes all children of the Parent DMIS ID.

Maxwell – Purchased Care Pharmacy¹ based on PRISM Area ID by Enrollment Group

0004 AF-C-42nd MEDGRP-MAXWELL											
Source System	Enrollment Group	2017					2018				
		# Scripts	Days Supply	Paid by TRICARE	Paid / Script	Paid / Day	# Scripts	Days Supply	Paid by TRICARE	Paid / Script	Paid / Day
MCSC (Retail)	Prime-MTF	40,974	897,162	\$ 2,863,589	\$ 70	\$ 3.19	39,650	875,987	\$ 2,491,623	\$ 63	\$ 2.84
	Prime-MCSC	10,574	292,806	\$ 729,690	\$ 69	\$ 2.49	10,854	310,280	\$ 587,685	\$ 54	\$ 1.89
	Reliant	386	9,162	\$ 8,018	\$ 21	\$ 0.88	613	16,728	\$ 29,424	\$ 48	\$ 1.76
	Plus	441	14,689	\$ 26,110	\$ 59	\$ 1.78	365	10,417	\$ 37,445	\$ 103	\$ 3.59
	Overseas Prime	3	25	\$ 17	\$ 6	\$ 0.67	0	0	\$ 0	\$ 0	\$ 0.00
	Desig Prov	0	0	\$ 0	\$ 0	\$ 0.00	1	20	\$ 7	\$ 7	\$ 0.36
	Other	160,343	5,238,684	\$ 8,163,024	\$ 51	\$ 1.56	153,962	5,147,406	\$ 8,037,105	\$ 52	\$ 1.56
MCSC Total		212,721	6,452,528	\$ 11,790,448	\$ 55	\$ 1.83	205,445	6,360,838	\$ 11,183,290	\$ 54	\$ 1.76
Mail Order	Prime-MTF	5,384	440,100	\$ 1,739,117	\$ 323	\$ 3.95	4,568	376,781	\$ 1,686,795	\$ 369	\$ 4.48
	Prime-MCSC	3,425	283,986	\$ 523,946	\$ 153	\$ 1.84	3,062	253,400	\$ 538,869	\$ 176	\$ 2.13
	Reliant	71	5,829	\$ 4,495	\$ 63	\$ 0.77	52	4,812	\$ 12,134	\$ 233	\$ 2.52
	Plus	213	18,098	\$ 14,573	\$ 68	\$ 0.81	165	14,437	\$ 12,096	\$ 73	\$ 0.84
	Overseas Prime	8	720	\$ 569	\$ 71	\$ 0.79	0	0	\$ 0	\$ 0	\$ 0.00
	Other	58,497	4,973,167	\$ 7,167,115	\$ 123	\$ 1.44	53,882	4,568,295	\$ 7,230,581	\$ 134	\$ 1.58
Mail Order Total		67,598	5,721,900	\$ 9,449,814	\$ 140	\$ 1.65	61,729	5,217,725	\$ 9,480,476	\$ 154	\$ 1.82
Grand Total		280,319	12,174,428	\$ 21,240,263	\$ 76	\$ 1.74	267,174	11,578,563	\$ 20,663,766	\$ 77	\$ 1.78

¹ Source: M2 PDTS, Source System M (MCSC) and T (Mail Order). Based on PRISM Area ID.

Maxwell – FY18 Purchased Care Pharmacy¹

Top 20 Products Dispensed by # of Scripts and Cost/Day

0004 AF-C-42nd MEDGRP-MAXWELL					
TOP 20 BASED ON VOLUME					
Product Name	Number of Scripts	Days Supply	Paid by TRICARE	Paid / Script	Paid / Day
HYDROCODONE-ACETAMINOPHEN	6,849	95,636	\$ 29,611	\$ 4	\$ 0.31
LEVOTHYROXINE SODIUM	4,466	299,951	\$ 19,503	\$ 4	\$ 0.07
ATORVASTATIN CALCIUM	4,029	294,116	\$ 224,761	\$ 56	\$ 0.76
AZITHROMYCIN	3,827	23,907	\$ 13,917	\$ 4	\$ 0.58
AMLODIPINE BESYLATE	3,666	251,481	\$ 50,033	\$ 14	\$ 0.20
AMOXICILLIN	3,540	29,997	\$ 1,077	\$ 0	\$ 0.04
OMEPRAZOLE	3,466	237,329	\$ 52,558	\$ 15	\$ 0.22
PANTOPRAZOLE SODIUM	3,103	198,263	\$ 254,742	\$ 82	\$ 1.28
ALPRAZOLAM	3,046	94,460	\$ 4,379	\$ 1	\$ 0.05
GABAPENTIN	3,046	146,216	\$ 64,903	\$ 21	\$ 0.44
PREDNISON	3,024	46,340	\$ 3,885	\$ 1	\$ 0.08
VITAMIN D2	2,939	187,755	\$ 1,138	\$ 0	\$ 0.01
OXYCODONE-ACETAMINOPHEN	2,819	45,570	\$ 24,493	\$ 9	\$ 0.54
LOSARTAN POTASSIUM	2,785	198,363	\$ 108,590	\$ 39	\$ 0.55
FLUTICASONE PROPIONATE	2,749	135,434	\$ 6,411	\$ 2	\$ 0.05
MONTELUKAST SODIUM	2,605	166,324	\$ 16,880	\$ 6	\$ 0.10
TRAMADOL HCL	2,525	47,118	\$ 24,602	\$ 10	\$ 0.52
AMOXICILLIN-CLAVULANATE POT	2,374	21,425	\$ 8,548	\$ 4	\$ 0.40
LISINAPRIL	2,343	169,966	\$ 176	\$ 0	\$ 0.00
FUROSEMIDE	2,277	132,915	\$ 16,901	\$ 7	\$ 0.13

0004 AF-C-42nd MEDGRP-MAXWELL					
TOP 20 BASED ON COST PER DAY					
Product Name	Number of Scripts	Days Supply	Paid by TRICARE	Paid / Script	Paid / Day
H.P. ACTHAR	1	10	\$ 77,212	\$ 77,212	\$ 7,721.15
BENEFIX	10	283	\$ 178,946	\$ 17,895	\$ 632.32
KALYDECO	6	540	\$ 313,834	\$ 52,306	\$ 581.17
MAVYRET	2	56	\$ 26,873	\$ 13,436	\$ 479.87
HIZENTRA	8	196	\$ 93,762	\$ 11,720	\$ 478.38
GONAL-F RFF REDI-JECT	15	63	\$ 29,504	\$ 1,967	\$ 468.31
LENVIMA	2	60	\$ 24,724	\$ 12,362	\$ 412.07
SUBSYS	2	33	\$ 13,075	\$ 6,537	\$ 396.21
IBRANCE	10	280	\$ 107,791	\$ 10,779	\$ 384.97
KISQALI	5	140	\$ 53,545	\$ 10,709	\$ 382.46
VECAMYL	10	300	\$ 112,736	\$ 11,274	\$ 375.79
NORTHERA	4	120	\$ 44,425	\$ 11,106	\$ 370.21
POMALYST	21	574	\$ 197,182	\$ 9,390	\$ 343.52
IMBRUVICA	38	1,102	\$ 367,441	\$ 9,669	\$ 333.43
ADEMPAS	7	210	\$ 66,573	\$ 9,510	\$ 317.02
LETAIRIS	12	360	\$ 110,069	\$ 9,172	\$ 305.75
CAYSTON	12	336	\$ 101,502	\$ 8,459	\$ 302.09
OPSUMIT	9	270	\$ 79,786	\$ 8,865	\$ 295.50
REVLIMID	95	2,632	\$ 777,538	\$ 8,185	\$ 295.42
MENOPUR	5	30	\$ 8,656	\$ 1,731	\$ 288.54

¹ Source: M2 PDTS, Source System M (MCSC) and T (Mail Order). Based on PRISM Area ID.

Radiology

Maxwell – Direct Care Radiology¹ Services by Ordering Product Line and Enrollment Category

0004 AF-C-42nd MEDGRP-MAXWELL							
FY 2017 RADIOLOGY SERVICES							
Ordering Product Line	Prime - Site	Reliant	Prime - Other	Plus	TFL	Not Enrolled	Total
Dental	4						4
Special Programs	550	4	18		18	34	624
Mental Health	6						6
OB/GYN	1,026	4	8			36	1,074
Orthopedics	328	6	12			18	364
Primary Care	8,942	364	534		2	394	10,236
Total	10,856	378	572	0	20	482	12,308

0004 AF-C-42nd MEDGRP-MAXWELL							
FY 2018 RADIOLOGY SERVICES							
Ordering Product Line	Prime - Site	Reliant	Prime - Other	Plus	TFL	Not Enrolled	Total
Ancillary	2						2
Special Programs	432	16	12		18	12	490
Mental Health	4						4
OB/GYN	592	12	18			14	636
Orthopedics	238	20	14			18	290
Primary Care	9,525	538	626		4	492	11,185
Total	10,793	586	670	0	22	536	12,607

¹ Source: M2 Radiology Detail, includes both Technical and Professional services. Prime-Site defined as Enrollment Site Parent equal to Tmt Parent. Ordering Product Line based on Ordering MEPRS Code.

Maxwell – FY18 Direct Care Top 20 Radiology Procedures¹ by Number of Services and Cost/Svc

0004 AF-C-42nd MEDGRP-MAXWELL						
TOP 20 RADIOLOGY PROCEDURES BY VOLUME						
Procedure Code	Description	FY 2018				
		# of Svcs	Total RVU	Full Cost	Avg RVU	Cost / Svc
73620	RADIOLOGIC EXAM,FOOT; 2 VIEWS	860	308.37	\$ 19,410	0.36	\$ 22.57
71020	RAD EXM,CHEST,2,FRONTAL & LAT;	840	323.40	\$ 20,353	0.39	\$ 24.23
73030	RAD EXM,SHLDR;COMP,MIN 2 VIEW	728	294.14	\$ 18,513	0.40	\$ 25.43
73564	RAD EXAM, KNEE; COMP, 4+ VIEWS	652	358.60	\$ 22,569	0.55	\$ 34.62
73610	RAD EXAM,ANK;COMP,MIN 3 VIEWS	632	274.92	\$ 17,304	0.44	\$ 27.38
73560	RADIOLOGIC EXAM,KNEE;1/2 VIEWS	630	269.88	\$ 16,987	0.43	\$ 26.96
72110	RAD EXM,SPINE,LUMBO;MIN 4 VIEW	562	379.35	\$ 23,874	0.68	\$ 42.48
72050	RAD EXAM,SPINE,CERV; 4/5 VIEWS	494	308.75	\$ 19,431	0.63	\$ 39.34
76856	US,PELV,REAL TME W IMG DOC;CMP	486	750.87	\$ 47,259	1.55	\$ 97.24
76830	US EXAM, TRANSVAGINAL	464	795.76	\$ 50,084	1.72	\$ 107.94
76700	US,ABDM,REAL TME W IMG DOC;CMP	412	708.18	\$ 44,572	1.72	\$ 108.18
73630	RAD EXM,FOOT;COMP, MIN 3 VIEWS	392	158.32	\$ 9,966	0.40	\$ 25.42
72100	RAD EXM,SPINE,LUMBO; 2/3 VIEWS	390	189.15	\$ 11,905	0.49	\$ 30.53
73130	RAD EXAM, HAND; MIN OF 3 VIEWS	376	163.88	\$ 10,315	0.44	\$ 27.43
76881	ULTSND,COM JT REAL-TIM,IMG DOC	321	478.66	\$ 30,127	1.49	\$ 93.85
76536	US,SOFT TISS HEAD/NCK	292	478.57	\$ 30,121	1.64	\$ 103.15
71270	CT THRAX WO CNTST MAT FUR SEC	288	982.38	\$ 61,831	3.41	\$ 214.69
73110	RAD EXM,WRIST;COMP,MIN 3 VIEWS	272	132.36	\$ 8,332	0.49	\$ 30.63
70450	CT HEAD/BRAIN W/O CONSTT MATRL	224	360.64	\$ 22,699	1.61	\$ 101.34
73590	RAD EXM;TIBIA & FIBULA,2 VIEWS	220	86.90	\$ 5,470	0.40	\$ 24.87

0004 AF-C-42nd MEDGRP-MAXWELL						
TOP 20 RADIOLOGY PROCEDURES BY COST/SVC						
Procedure Code	Description	FY 2018				
		# of Svcs	Total RVU	Full Cost	Avg RVU	Cost / Svc
74178	CT,ABD & PELV;WO CON MAT,1/2 RG	42	207.00	\$ 13,029	4.93	\$ 310.20
74177	CT,ABDOM & PELV;W CONTRAST MAT	220	957.38	\$ 60,258	4.35	\$ 273.90
71275	CT ANGIO,CHEST(NONCORO),W CONT	10	41.85	\$ 2,634	4.19	\$ 263.41
74170	CT ABDOM WO CNTRST MAT FUR SEC	2	7.34	\$ 462	3.67	\$ 230.99
71270	CT THRAX WO CNTST MAT FUR SEC	288	982.38	\$ 61,831	3.41	\$ 214.69
72193	CT PELVIS, W CONTRAST MATERIAL	2	6.31	\$ 397	3.16	\$ 198.58
70491	CT SFT TISE NECK W CNTRST MATL	62	181.76	\$ 11,440	2.93	\$ 184.52
74176	CT,ABDOM & PELV;WO CONTRAS MAT	194	540.29	\$ 34,006	2.79	\$ 175.29
72125	CT CRVICL SPINE WO CNTRST MAT	18	46.35	\$ 2,917	2.58	\$ 162.07
72128	CT THORACIC SPN WO CNTRST MAT	8	20.15	\$ 1,268	2.52	\$ 158.53
72131	CT LUMBAR SPNE, WO CNTRST MAT	10	25.10	\$ 1,580	2.51	\$ 157.98
73700	CT LW EXTRM WO CNTRAST MATERIA	20	50.18	\$ 3,158	2.51	\$ 157.92
73200	CT UP EXTRM WO CNTRAST MATERIA	28	70.13	\$ 4,414	2.50	\$ 157.64
71250	CT THORAX WO CONTRAST MATERIAL	36	84.04	\$ 5,289	2.33	\$ 146.93
74150	CT, ABDOM WO CNTRAST MATERIAL	2	4.16	\$ 262	2.08	\$ 130.92
72192	CT PELVIS, WO CONTRAST MATERIA	4	8.12	\$ 511	2.03	\$ 127.77
70486	CT MAXILLOFACIAL WO CNTRST MAT	162	314.01	\$ 19,764	1.94	\$ 122.00
76700	US,ABDM,REAL TME W IMG DOC;CMP	412	708.18	\$ 44,572	1.72	\$ 108.18
76830	US EXAM, TRANSVAGINAL	464	795.76	\$ 50,084	1.72	\$ 107.94
93971	EXTREMITY STUDY	150	254.01	\$ 15,987	1.69	\$ 106.58

¹Source: M2 Radiology Detail, includes both Technical and Professional services.

Maxwell – Purchased Care Radiology¹ Services by Product Line² and Enrollment Category

0004 AF-C-42nd MEDGRP-MAXWELL PARENT PRISM AREA							
FY 2017 RADIOLOGY SERVICES							
Product Line	Prime - Site	Reliant	Prime - Other	Plus	TFL	Not Enrolled	Total
Inpatient	1,125	5	154		6,035	558	7,877
Anesth	233	2	32		292	41	600
ENT	8		2		59	25	94
ER	4,747	64	765		5,045	1,535	12,156
Facility	2,806	11	502	1	5,340	1,263	9,923
IMSub	351	3	56		1,167	153	1,730
MH	2						2
OBGYN	1,387	4	58		50	506	2,005
Optom	41		9		130	26	206
Ortho	2,002	10	289		2,987	944	6,232
PC	3,009	18	436		8,753	1,539	13,755
Rad	5,438	23	742		4,670	1,886	12,759
Surg	61		12		83	20	176
SurgSub	94		15		123	54	286
Other	26				18	4	48
None	93	1	17		131	27	269
Total	21,423	141	3,089	1	34,883	8,581	68,118

0004 AF-C-42nd MEDGRP-MAXWELL PARENT PRISM AREA							
FY 2018 RADIOLOGY SERVICES							
Product Line	Prime - Site	Reliant	Prime - Other	Plus	TFL	Not Enrolled	Total
Inpatient	1,420	3	235		5,609	377	7,644
Anesth	193	1	38		231	52	515
ENT	10	1	2		36	27	76
ER	4,366	94	706		4,549	1,491	11,206
Facility	3,452	28	646		6,007	1,472	11,605
IMSub	498		73		843	148	1,562
MH	6		1		3	5	15
OBGYN	760	5	43		56	291	1,155
Optom	53		10		120	20	203
Ortho	2,062	5	253		3,109	907	6,336
PC	2,528	23	559	2	8,138	1,453	12,703
Rad	6,309	40	953	1	5,732	1,864	14,899
Surg	79		8		92	34	213
SurgSub	154	1	22		156	19	352
Other	29		7		28	5	69
None	46		13		233	10	302
Total	21,965	201	3,569	3	34,942	8,175	68,855

¹ Source: M2 TED Non-Institutional Detail (Procedure Code = 7****), includes both Technical and Professional services. Based on "Parent" PRISM.

Prime-Site defined based on Enrollment Site Parent.

² Inpatient defined as Service Type = I, otherwise based on standard Product Line (derived from Provider Specialty).

Maxwell – FY18 Purchased Care Top 20 Radiology Procedures¹ by Number of Services and Paid/Svc

0004 AF-C-42nd MEDGRP-MAXWELL PARENT PRISM AREA						
TOP 20 RADIOLOGY PROCEDURES BY VOLUME						
Procedure Code	Description	FY 2018				
		Number of Services	Enhanced Total RVU	Amount Paid ²	Avg RVU	Paid ² / Svc
71046	RADIOLOGIC EXAM,CHEST;2 VIEWS	5,563	2,633.76	\$ 95,924	0.47	\$ 17.24
71045	RADIOLOG EXM,CHEST;SINGLE VIEW	4,399	1,024.21	\$ 36,741	0.23	\$ 8.35
70450	CT HEAD/BRAIN W/O CONTST MATRL	2,522	3,066.30	\$ 100,619	1.22	\$ 39.90
77067	SCRN MAMMOG,BILAT,CAD WHN PERF	2,409	4,344.44	\$ 158,683	1.80	\$ 65.87
71020	RAD EXM,CHEST,2,FRONTAL & LAT;	1,957	858.77	\$ 31,905	0.44	\$ 16.30
73630	RAD EXM,FOOT;COMP, MIN 3 VIEWS	1,943	1,332.91	\$ 26,880	0.69	\$ 13.83
74177	CT,ABDOM & PELV;W CONTRAST MAT	1,737	5,062.24	\$ 177,386	2.91	\$ 102.12
71010	CHEST X-RAY	1,641	402.90	\$ 12,042	0.25	\$ 7.34
74176	CT,ABDOM & PELV;WO CONTRAS MAT	1,432	3,080.80	\$ 115,993	2.15	\$ 81.00
73030	RAD EXM,SHLDR;COMP,MIN 2 VIEW	1,229	794.86	\$ 15,938	0.65	\$ 12.97
72148	MAGNETIC IMAGE, LUMBAR SPINE	1,184	4,245.43	\$ 117,984	3.59	\$ 99.65
73721	MRI,JNT,LOW EXT;WO CNTRST MAT	1,137	4,531.32	\$ 149,372	3.99	\$ 131.37
73560	RADIOLOGIC EXAM,KNEE;1/2 VIEWS	1,082	776.06	\$ 12,340	0.72	\$ 11.40
72100	RAD EXM,SPINE,LUMBO; 2/3 VIEWS	1,068	850.93	\$ 15,482	0.80	\$ 14.50
78452	MYOCARD PERF IMAG,SPECT;MULTI	974	10,781.53	\$ 190,875	11.07	\$ 195.97
76642	ULTRASND,BREAST,UNILAT;LIMITED	939	699.15	\$ 33,918	0.74	\$ 36.12
73564	RAD EXAM, KNEE; COMP, 4+ VIEWS	937	691.72	\$ 17,466	0.74	\$ 18.64
76830	US EXAM, TRANSVAGINAL	930	2,111.64	\$ 73,964	2.27	\$ 79.53
73502	RAD EXAM,HIP,UNILAT;2-3 VIEWS	893	724.19	\$ 11,751	0.81	\$ 13.16
77014	COMP TOM GD,PLC,RAD THERPY FLD	857	2,860.00	\$ 34,894	3.34	\$ 40.72

0004 AF-C-42nd MEDGRP-MAXWELL PARENT PRISM AREA						
TOP 20 RADIOLOGY PROCEDURES BY PAID/SVC						
Procedure Code	Description	FY 2018				
		Number of Services	Enhanced Total RVU	Amount Paid ²	Avg RVU	Paid ² / Svc
77372	SRS,CRN LS,1SESS;LIN ACCEL BSD	5	123.02	\$ 9,761	24.60	\$ 1,952.24
77385	IMRT DELIVERY,GUID&TRAC;SIMPLE	1	9.71	\$ 1,537	9.71	\$ 1,536.80
78459	HEART MUSCLE IMAGING (PET)	1	11.27	\$ 899	11.27	\$ 898.87
77301	RADIOLTHERAPY DOS PLAN, IMRT	48	2,572.48	\$ 30,475	53.59	\$ 634.90
76497	UNLIST COMP TOMOGRAPHY PROC	2	2.30	\$ 1,118	1.15	\$ 559.11
76498	UNLIST MAGNET RESONACE PROC	7	15.18	\$ 3,881	2.17	\$ 554.45
78803	TUMOR IMAGING (3D)	1	0.00	\$ 427	0.00	\$ 427.47
77432	STEREOTACTIC RADIATION TRMT	1	11.38	\$ 422	11.38	\$ 422.15
78492	HEART IMAGE (PET), MULTIPLE	56	836.00	\$ 22,370	14.93	\$ 399.46
78816	PET W CONCUR ACQ CT;WHOLE BODY	79	927.02	\$ 26,777	11.73	\$ 338.95
73219	MAG RES IMG,UP EXT,NO JT;W CM	1	11.31	\$ 335	11.31	\$ 335.15
72142	MAGNETIC IMAGE, NECK SPINE	3	2.45	\$ 994	0.82	\$ 331.46
73722	MAG RES IMG,ANY JT,LW EXT;W CM	22	177.75	\$ 7,067	8.08	\$ 321.23
75557	CARD MRI,MORPH & FUNC WO CONTR	1	9.21	\$ 319	9.21	\$ 318.66
73723	MAG RES IM,ANY JT,LW EXT;WO CM	29	298.39	\$ 9,125	10.29	\$ 314.64
75893	VENOUS SAMPLING BY CATHETER	3	4.08	\$ 906	1.36	\$ 302.04
73220	MRI UPPR EXTREMITY W/O&W DYE	18	134.97	\$ 5,346	7.50	\$ 297.01
77373	STEREOTACTIC RAD TRMT DELIVERY	15	585.45	\$ 4,244	39.03	\$ 282.96
73223	MRI JOINT UP EXTR W/O&W DYE	24	272.42	\$ 6,782	11.35	\$ 282.58
75630	X-RAY AORTA, LEG ARTERIES	16	50.95	\$ 4,403	3.18	\$ 275.18

¹ Source: M2 TED Non-Institutional Detail (Procedure Code = 7****), includes both Technical and Professional services. Based on "Parent" PRISM.

² Purchased Care includes 13% increase for overhead burdening.

Laboratory

Maxwell – Direct Care Laboratory¹ Services by Ordering Product Line and Enrollment Category

0004 AF-C-42nd MEDGRP-MAXWELL							
FY 2017 LABORATORY SERVICES							
Ordering Product Line	Prime - Site	Reliant	Prime - Other	Plus	TFL	Not Enrolled	Total
Dental	27	4	2				33
Special Programs	3,049	23,157	8,357		539	3,706	38,808
Mental Health	566	61	32			9	668
OB/GYN	7,158	83	90		10	229	7,570
Optometry						6	6
Orthopedics	6						6
Primary Care	52,218	1,090	1,287	9	65	3,680	58,349
TOTAL	63,024	24,395	9,768	9	614	7,630	105,440

0004 AF-C-42nd MEDGRP-MAXWELL							
FY 2018 LABORATORY SERVICES							
Ordering Product Line	Prime - Site	Reliant	Prime - Other	Plus	TFL	Not Enrolled	Total
Dental	17	1					18
Ancillary						19	19
Special Programs	3,263	24,862	9,595		578	2,834	41,132
Mental Health	605	20	49			1	675
OB/GYN	7,312	114	188			249	7,863
Optometry	10					1	11
Orthopedics	7					3	10
Primary Care	55,720	1,746	2,408	7	49	3,877	63,807
TOTAL	66,934	26,743	12,240	7	627	6,984	113,535

¹ Source: M2 Laboratory Detail, includes both Technical and Professional services. Prime-Site defined as Enrollment Site Parent equal to Tmt Parent. Ordering Product Line based on Ordering MEPRS Code.

Maxwell – FY18 Direct Care Top 20 Laboratory Procedures¹ by Number of Services and Cost/Svc

0004 AF-C-42nd MEDGRP-MAXWELL						
TOP 20 LABORATORY PROCEDURES BY VOLUME						
Procedure Code	Description	FY 2018				
		# of Svcs	Total RVU	Full Cost	Avg RVU	Cost / Svc
86703	ANTIBDY;HIV-1 & HIV-2,SING RES	7,249	362.45	\$ 21,240	0.05	\$ 2.93
86701	HIV-1	6,284	316.99	\$ 18,576	0.05	\$ 2.96
80053	COMPREHENSIVE METABOLIC PANEL	6,207	10,848.25	\$ 635,516	1.75	\$ 102.39
85025	COMPLETE CBC W/AUTO DIFF WBC	5,628	1,800.96	\$ 105,525	0.32	\$ 18.75
80061	LIPID PANEL	5,615	5,692.51	\$ 333,489	1.01	\$ 59.39
84443	ASSAY THYROID STIM HORMONE	4,433	3,147.43	\$ 184,368	0.71	\$ 41.59
83036	HEMOGLOBIN; GLYCOSYLATED (A1C)	4,376	1,484.76	\$ 86,968	0.34	\$ 19.87
84439	ASSAY OF FREE THYROXINE	4,065	1,287.42	\$ 75,420	0.32	\$ 18.55
81003	URINALYSIS, AUTO, W/O SCOPE	3,759	310.07	\$ 18,172	0.08	\$ 4.83
86735	MUMPS ANTIBODY	3,365	168.25	\$ 9,859	0.05	\$ 2.93
86762	RUBELLA ANTIBODY	3,364	168.20	\$ 9,857	0.05	\$ 2.93
86765	RUBEOLA ANTIBODY	3,362	168.10	\$ 9,851	0.05	\$ 2.93
86787	VARICELLA-ZOSTER ANTIBODY	3,230	161.50	\$ 9,464	0.05	\$ 2.93
86706	HEP B SURFACE ANTIBODY	3,220	161.00	\$ 9,435	0.05	\$ 2.93
86708	HEPATITIS A ANTIBODY (HAAB)	3,202	160.10	\$ 9,382	0.05	\$ 2.93
87491	CHYLM D TRACH, DNA, AMP PROBE	2,141	107.05	\$ 6,273	0.05	\$ 2.93
87591	N.GONORRHOEAE, DNA, AMP PROB	2,141	107.05	\$ 6,273	0.05	\$ 2.93
82306	VITAMIN D, 25 HYDROXY	2,000	100.00	\$ 5,860	0.05	\$ 2.93
86900	BLOOD TYPING, SEROLOGIC; ABO	1,830	256.20	\$ 15,006	0.14	\$ 8.20
86901	BLOOD TYPING,SEROLOGIC; RH (D)	1,830	256.20	\$ 15,006	0.14	\$ 8.20

0004 AF-C-42nd MEDGRP-MAXWELL						
TOP 20 LABORATORY PROCEDURES BY COST/SVC						
Procedure Code	Description	FY 2018				
		# of Svcs	Total RVU	Full Cost	Avg RVU	Cost / Svc
80050	GENERAL HEALTH PANEL	72	200.00	\$ 11,716	2.78	\$ 162.72
80053	COMPREHENSIVE METABOLIC PANEL	6,207	10,848.25	\$ 635,516	1.75	\$ 102.39
80069	RENAL FUNCTION PANEL	62	76.88	\$ 4,504	1.24	\$ 72.64
80061	LIPID PANEL	5,615	5,692.51	\$ 333,489	1.01	\$ 59.39
80048	BASIC METABOL PANEL (CA,TOTAL)	455	450.45	\$ 26,385	0.99	\$ 57.99
80076	HEPATIC FUNCTION PANEL	266	256.84	\$ 15,045	0.97	\$ 56.56
84443	ASSAY THYROID STIM HORMONE	4,433	3,147.43	\$ 184,368	0.71	\$ 41.59
84153	ASSAY OF PSA, TOTAL	1,300	822.59	\$ 48,193	0.63	\$ 37.07
80051	ELECTROLYTE PANEL	4	2.20	\$ 129	0.55	\$ 32.22
84702	CHORIONIC GONADOTROPIN TEST	897	470.76	\$ 27,576	0.52	\$ 30.74
87880	STREP A ASSAY W/OPTIC	1,416	651.36	\$ 38,161	0.46	\$ 26.95
89321	SEMEN ANAL;PRES & MOTIL SPERM	11	4.66	\$ 273	0.42	\$ 24.82
87400	INF ANT DET,IMM; INFLU,A/B,EA	1,081	451.41	\$ 26,446	0.42	\$ 24.46
83036	HEMOGLOBIN; GLYCOSYLATED (A1C)	4,376	1,484.76	\$ 86,968	0.34	\$ 19.87
85025	COMPLETE CBC W/AUTO DIFF WBC	5,628	1,800.96	\$ 105,525	0.32	\$ 18.75
84439	ASSAY OF FREE THYROXINE	4,065	1,287.42	\$ 75,420	0.32	\$ 18.55
87070	CULT,BACT;SOURC EXC URIN/BLD	1,261	387.74	\$ 22,710	0.31	\$ 18.01
84703	CHORIONIC GONADOTROPIN ASSAY	447	117.87	\$ 6,905	0.26	\$ 15.45
81025	URINE PREGNANCY TEST	1,593	382.32	\$ 22,398	0.24	\$ 14.06
82465	CHOLESTEROL,SERUM/WHOLE BLOOD	1	0.24	\$ 14	0.24	\$ 14.06

¹Source: M2 Laboratory Detail, includes both Technical and Professional services.

Maxwell – Purchased Care Laboratory¹ Services by Product Line² and Enrollment Category

0004 AF-C-42nd MEDGRP-MAXWELL PARENT PRISM AREA							
FY 2017 LABORATORY SERVICES							
Product Line	Prime - Site	Reliant	Prime - Other	Plus	TFL	Not Enrolled	Total
Inpatient	295		23		700	90	1,108
Anesth	209		42		71	68	390
Derm	173	1	5		189	54	422
ENT	7		4			1	12
ER	200	14	44		952	72	1,282
Facility	3,769		1,928		2,393	2,681	10,771
IMSub	4,963	10	889		4,948	1,869	12,679
MH	1				2	1	4
OBGYN	1,910	17	98		243	735	3,003
Optom	20				53	5	78
Ortho	7		1		1	3	12
PC	10,485	55	2,315	3	27,143	10,135	50,136
Path	1,809	7	220		2,675	788	5,499
Rad	5		1		2	2	10
Surg	35		6		49	51	141
SurgSub	432	4	51		1,351	146	1,984
Other	9					2	11
None	20,067	112	3,585	1	3,761	13,260	40,786
Total	44,396	220	9,212	4	44,533	29,963	128,328

0004 AF-C-42nd MEDGRP-MAXWELL PARENT PRISM AREA							
FY 2018 LABORATORY SERVICES							
Product Line	Prime - Site	Reliant	Prime - Other	Plus	TFL	Not Enrolled	Total
Inpatient	289	3	36		652	68	1,048
Anesth	197		52		59	76	384
Derm	165		18		368	45	596
ENT	15		1		2	12	30
ER	205	9	42		800	86	1,142
Facility	3,804	22	2,151		2,391	3,037	11,405
IMSub	4,964	19	777		12,253	1,861	19,874
MH	34		7		4	12	57
OBGYN	1,432	7	124		203	702	2,468
Optom	29				61	14	104
Ortho	8				1	4	13
PC	12,304	68	3,078		20,576	11,152	47,178
Path	3,123	5	420		3,205	986	7,739
Rad	3		2		3	3	11
Surg	82	8	25		132	93	340
SurgSub	621	1	54		1,625	134	2,435
Other	2				10	3	15
None	17,939	138	3,464	1	4,254	12,018	37,814
Total	45,216	280	10,251	1	46,599	30,306	132,653

¹ Source: M2 TED Non-Institutional Detail (Procedure Code = 8****), includes both Technical and Professional services. Based on “Parent” PRISM.

Prime-Site defined based on Enrollment Site Parent.

² Inpatient defined as Service Type = I, otherwise based on standard Product Line (derived from Provider Specialty).

Maxwell – FY18 Purchased Care Top 20 Laboratory Procedures¹ by Number of Services and Paid/Svc

0004 AF-C-42nd MEDGRP-MAXWELL PARENT PRISM AREA						
TOP 20 LABORATORY PROCEDURES BY VOLUME						
Procedure Code	Description	FY 2018				
		Number of Services	Enhanced Total RVU	Amount Paid ²	Avg RVU	Paid ² / Svc
85025	COMPLETE CBC W/AUTO DIFF WBC	12,156	3,368.31	\$ 45,018	0.28	\$ 3.70
88305	LEV IV-SRG PATH,GROS&MICRO EXM	8,508	13,154.51	\$ 259,940	1.55	\$ 30.55
80053	COMPREHENSIVE METABOLIC PANEL	8,331	3,076.16	\$ 37,507	0.37	\$ 4.50
87804	INFLUENZA ASSAY W/OPTIC	7,743	3,561.78	\$ 69,188	0.46	\$ 8.94
80061	LIPID PANEL	4,167	2,219.82	\$ 30,126	0.53	\$ 7.23
87880	STREP A ASSAY W/OPTIC	4,160	1,913.60	\$ 40,497	0.46	\$ 9.73
83036	HEMOGLOBIN; GLYCOSYLATED (A1C)	3,813	1,294.97	\$ 16,055	0.34	\$ 4.21
84443	ASSAY THYROID STIM HORMONE	2,927	1,737.08	\$ 30,182	0.59	\$ 10.31
81003	URINALYSIS, AUTO, W/O SCOPE	2,602	215.72	\$ 2,526	0.08	\$ 0.97
82306	VITAMIN D, 25 HYDROXY	2,446	2,555.39	\$ 44,350	1.04	\$ 18.13
81002	URINALYSIS NONAUTO W/O SCOPE	2,445	244.50	\$ 2,805	0.10	\$ 1.15
84439	ASSAY OF FREE THYROXINE	2,071	656.83	\$ 13,396	0.32	\$ 6.47
82607	VITAMIN B-12	2,021	1,082.86	\$ 15,492	0.54	\$ 7.67
82728	ASSAY OF FERRITIN	1,753	843.59	\$ 11,852	0.48	\$ 6.76
86235	NUCLEAR ANTIGEN ANTIBODY	1,629	1,039.80	\$ 16,904	0.64	\$ 10.38
83540	ASSAY OF IRON	1,599	362.81	\$ 4,479	0.23	\$ 2.80
80048	BASIC METABOL PANEL (CA,TOTAL)	1,283	380.63	\$ 4,991	0.30	\$ 3.89
83735	ASSAY OF MAGNESIUM	1,279	302.52	\$ 4,324	0.24	\$ 3.38
81000	URINALYSIS, NONAUTO W/SCOPE	1,207	135.31	\$ 1,541	0.11	\$ 1.28
82962	GLUCOSE BLOOD TEST	1,186	106.74	\$ 1,089	0.09	\$ 0.92

0004 AF-C-42nd MEDGRP-MAXWELL PARENT PRISM AREA						
TOP 20 LABORATORY PROCEDURES BY PAID/SVC						
Procedure Code	Description	FY 2018				
		Number of Services	Enhanced Total RVU	Amount Paid ²	Avg RVU	Paid ² / Svc
81519	ONC(BRST),MRNA,RT-PCR,21 GENES	6	595.90	\$ 24,449	99.32	\$ 4,074.81
81229	CYTO CON MICROAR ANAL;COPY&SNP	2	64.44	\$ 6,520	32.22	\$ 3,260.05
81408	MOLECULAR PATHOLOGY PROC, LV 9	2	111.12	\$ 4,671	55.56	\$ 2,335.39
81228	CYTO CON MICROAR ANAL;COPY NUM	1	0.00	\$ 2,261	0.00	\$ 2,261.40
81162	BRCA1,BRCA2 GEN ANAL;FULL&DUP	4	250.32	\$ 7,340	62.58	\$ 1,835.03
81211	BRCA1,2 GEN ANAL;FUL,COM,BRCA1	17	1,115.21	\$ 27,953	65.60	\$ 1,644.28
81220	CFTR GENE ANAL;COMMON VARIANTS	4	46.38	\$ 4,297	11.60	\$ 1,074.24
81406	MOLECULAR PATHOLOGY PROC,LEV 7	15	110.04	\$ 15,899	7.34	\$ 1,059.96
81405	MOLECULAR PATHOLOGY PROC,LEV 6	4	33.48	\$ 2,937	8.37	\$ 734.33
81420	FET CHR ANEUP GEN SEQ,13,18,21	13	283.00	\$ 8,703	21.77	\$ 669.47
81404	MOLECULAR PATHOLOGY PROC,LEV 5	5	38.15	\$ 3,172	7.63	\$ 634.48
81479	UNLISTED MOLECULAR PATH PROC	13	0.00	\$ 8,126	0.00	\$ 625.11
81201	APC GENE ANAL;FULL GENE SEQ	1	21.67	\$ 622	21.67	\$ 621.50
86834	AB,HLA,SOL PHAS;SEMI-QUANT,I	1	12.26	\$ 601	12.26	\$ 601.07
81321	PTEN GENE ANAL;FULL SEQ ANAL	3	50.01	\$ 1,781	16.67	\$ 593.80
81292	MLH1 GENE ANAL; FULL SEQ ANAL	5	93.15	\$ 2,953	18.63	\$ 590.59
81317	PMS2 GENE ANAL; FULL SEQ ANAL	3	61.17	\$ 1,753	20.39	\$ 584.39
88121	CYTO,IN SIT HYB,URI,3-5,EA;CMP	1	15.40	\$ 560	15.40	\$ 559.80
88120	CYTO,IN SIT HYB,URI,3-5,EA;MAN	1	18.00	\$ 559	18.00	\$ 559.35
81528	ONC(COLOREC),QUANT,10 DNA MARK	11	155.96	\$ 6,021	14.18	\$ 547.33

¹ Source: M2 TED Non-Institutional Detail (Procedure Code = 8****), includes both Technical and Professional services. Based on "Parent" PRISM.

² Purchased Care includes 13% increase for overhead burdening.

Staffing

Maxwell – Staffing¹

All MEPRS Codes, No Limitation on Skill Type

Assigned FTEs

Tmt Parent DMIS ID	Tmt DMIS ID	Tmt DMIS ID Name	2017					2018				
			CIV	CON	MIL	OTH	TOTAL	CIV	CON	MIL	OTH	TOTAL
0004	0004	AF-C-42nd MEDGRP-MAXWELL	75.6		140.1		215.7	74.6		148.8		223.4
	1774	AF-D-42nd DENTAL FLT-MAXWELL	5.9		17.3		23.2	5.5		17.6		23.1
0004 Total			81.5	0.0	157.4	0.0	238.9	80.2	0.0	166.4	0.0	246.5

Available FTEs

Tmt Parent DMIS ID	Tmt DMIS ID	Tmt DMIS ID Name	2017					2018				
			CIV	CON	MIL	OTH	TOTAL	CIV	CON	MIL	OTH	TOTAL
0004	0004	AF-C-42nd MEDGRP-MAXWELL	62.3	65.9	134.6	2.0	264.8	58.6	69.3	138.3	1.9	268.1
	1774	AF-D-42nd DENTAL FLT-MAXWELL	4.7	1.8	12.5	0.3	19.2	4.7	1.8	12.0	0.0	18.5
0004 Total			67.0	67.7	147.1	2.3	284.0	63.3	71.1	150.3	1.9	286.6

¹ Source: M2 MEPRS Personnel Detail. Based on Parent DMIS ID, information listed by Child DMIS ID.

Maxwell – Staffing (Available FTEs)¹

MEPRS B

0004 AF-C-42nd MEDGRP-MAXWELL											
Skill Type	Skill Type and Suffix Desc	2017					2018				
		CIV	CON	MIL	OTH	TOTAL	CIV	CON	MIL	OTH	TOTAL
1D	DENTIST			0.0		0.0					0.0
1P	PHYSICIAN	0.8	1.1	7.6		9.5	0.9	1.9	6.1		8.9
2N	NURSE PRACTITIONER		1.1	4.8		5.9		1.5	4.5		5.9
2P	PHYSICIAN ASSISTANT		1.4	2.7		4.1		1.6	2.5		4.1
2W	STUDENT-NON GME/GDE					0.0			0.1		0.1
2Z	ALL OTHERS IN SKILL TYPE 2	0.9	6.1	4.4		11.4	0.8	7.7	3.4		12.0
3R	REGISTERED NURSE	3.2	1.7	4.2		9.2	2.5	2.2	5.6		10.4
4L	LPN/LVN	6.9				6.9	6.0				6.0
4Z	ALL OTHERS IN SKILL TYPE 4	1.6	0.9	24.7		27.2	1.4	0.9	25.5		27.8
5A	ADMINISTRATORS	0.9		0.0		0.9	1.7				1.7
5C	CLERICAL		1.9	3.3	0.0	5.2		1.9	3.5	0.2	5.6
5Z	ALL OTHERS IN SKILL TYPE 5	3.0		0.0		3.1	2.8	0.4	0.0		3.1
Grand Total		17.4	14.3	51.7	0.0	83.5	16.1	18.1	51.2	0.2	85.6

¹ Source: M2 MEPRS Personnel Detail. Based on Child DMIS ID.

Maxwell – Staffing (Available FTEs)¹

All MEPRS

0004 AF-C-42nd MEDGRP-MAXWELL											
Skill Type	Skill Type and Suffix Desc	2017					2018				
		CIV	CON	MIL	OTH	TOTAL	CIV	CON	MIL	OTH	TOTAL
1D	DENTIST			0.6		0.6			0.4		0.4
1P	PHYSICIAN	0.9	1.1	12.9		14.8	0.9	1.9	10.1		12.9
2N	NURSE PRACTITIONER		1.2	5.5		6.7		1.5	5.4		6.8
2P	PHYSICIAN ASSISTANT		1.4	3.0		4.4		1.7	2.8		4.5
2W	STUDENT-NON GME/GDE					0.0			0.1		0.1
2Z	ALL OTHERS IN SKILL TYPE 2	4.0	10.3	9.7		24.0	4.5	13.5	10.1		28.1
3R	REGISTERED NURSE	5.8	5.4	4.9		16.1	4.2	6.8	8.0		19.0
3Z	ALL OTHERS IN SKILL TYPE 3			2.4		2.4			1.5		1.5
4L	LPN/LVN	6.9				6.9	6.2				6.2
4Z	ALL OTHERS IN SKILL TYPE 4	17.4	9.4	49.8		76.6	16.8	7.9	52.2		77.0
5A	ADMINISTRATORS	8.5		4.7		13.1	8.6		4.9		13.5
5C	CLERICAL	4.3	30.4	17.0	2.0	53.7	3.9	28.4	17.1	1.9	51.3
5L	LOGISTICS	1.4	6.7	6.9		15.0	1.7	7.1	8.4		17.2
5M	MEDICAL RECORD AUDITOR/CODER	1.4				1.4	1.6				1.6
5W	STUDENT-NON GME/GDE					0.0			0.1		0.1
5Z	ALL OTHERS IN SKILL TYPE 5	11.7		17.4		29.1	10.2	0.5	17.2		27.8
Grand Total		62.3	65.9	134.6	2.0	264.8	58.6	69.3	138.3	1.9	268.1

1774 AF-D-42nd DENTAL FLT-MAXWELL											
Skill Type	Skill Type and Suffix Desc	2017					2018				
		CIV	CON	MIL	OTH	TOTAL	CIV	CON	MIL	OTH	TOTAL
1D	DENTIST		0.9	4.0		4.9		1.0	3.5		4.4
4Z	ALL OTHERS IN SKILL TYPE 4	4.7	0.9	8.5		14.1	4.7	0.8	8.5		14.1
5C	CLERICAL				0.3	0.3			0.0		0.0
Grand Total		4.7	1.8	12.5	0.3	19.2	4.7	1.8	12.0	0.0	18.5

¹ Source: M2 MEPRS Personnel Detail. Based on Child DMIS ID.

Maxwell – Skill Type 1P (Physician) by DoD Occupation Code¹ (Available FTEs)

0004 AF-C-42nd MEDGRP-MAXWELL											
DoD Occ Code		2017					2018				
		CIV	CON	MIL	OTH	TOTAL	CIV	CON	MIL	OTH	TOTAL
260105	EXECUTIVE MEDICINE			0.1		0.1			0.0		0.0
260109	GENERAL MEDICINE			0.6		0.6					0.0
260111	FAMILY PRACTICE	0.8	0.2	3.6		4.5	0.9	1.0	3.4		5.3
260121	PEDIATRICS, GENERAL		1.0	1.2		2.2		0.9	0.9		1.8
260125	PSYCHIATRY			0.2		0.2					0.0
260151	AVIATION/AEROSPACE MEDICINE, RESIDENCY TRAINED OTH			0.3		0.3			0.4		0.4
260152	AVIATION/AEROSPACE MEDICINE NON-RESIDENCY TRAINED			1.8		1.8			1.3		1.3
TOTAL		0.8	1.1	7.6	0.0	9.5	0.9	1.9	6.1	0.0	8.9

MEPRS B
Only

¹ Source: M2 MEPRS Personnel Detail. Based on Child DMIS ID.

Eligible Population and Enrollment

Maxwell – Eligibles and Enrollees¹ by PRISM and Enrollment Site (Child)

PRISM (for Elig) / Enrollment Site (for Enr)		FY	Eligibles				Prime and Plus Enrolled					
			ADFM	RET	OTHER ²	AD	TOTAL	ADFM	RET	OTHER ²	AD	TOTAL
0004	AF-C-42nd MEDGRP-MAXWELL	2014	6,729	7,995	12,556	3,955	31,234	5,430	2,672	4,175	3,363	15,640
0004	AF-C-42nd MEDGRP-MAXWELL	2015	6,286	8,067	12,930	3,824	31,106	5,092	2,704	4,203	3,205	15,204
0004	AF-C-42nd MEDGRP-MAXWELL	2016	6,325	8,040	12,720	4,001	31,086	5,072	2,738	4,150	3,315	15,274
0004	AF-C-42nd MEDGRP-MAXWELL	2017	6,078	8,016	12,770	3,929	30,793	4,853	2,720	4,080	3,297	14,950
0004	AF-C-42nd MEDGRP-MAXWELL	2018	6,140	7,935	13,066	4,339	31,480	4,721	2,565	4,065	3,346	14,697

¹ Source: Eligibles = M2 DEERS Person Detail; Enrollees = M2 TRICARE Relationship Detail. Eligibles based on PRISM Area ID. Enrollees based on Enrollment Site and ACV Group = Prime or Plus.

² Includes FM of Retired, Survivors, Other, Unknown, Inactive Guard/Reserve, FM of Inactive Guard/Reserve

Maxwell – Eligibles¹ by PRISM Area ID

0004 AF-C-42nd MEDGRP-MAXWELL										
Gender by Age Group										
Gender	FY	0-4	5-14	15-17	18-24	25-34	35-44	45-64	65+	Total
Female	2014	725	1,709	572	1,241	1,337	1,632	4,344	4,214	15,773
	2015	710	1,690	537	1,193	1,379	1,524	4,301	4,307	15,641
	2016	737	1,664	516	1,161	1,428	1,494	4,221	4,383	15,604
	2017	723	1,640	482	1,148	1,425	1,480	4,098	4,455	15,451
	2018	763	1,636	509	1,171	1,483	1,571	4,010	4,534	15,676
Male	2014	870	1,792	578	1,337	1,448	1,719	4,087	3,630	15,461
	2015	811	1,748	538	1,334	1,582	1,699	4,051	3,703	15,466
	2016	831	1,760	529	1,314	1,644	1,681	3,961	3,763	15,483
	2017	833	1,768	502	1,225	1,685	1,669	3,829	3,830	15,343
	2018	849	1,795	495	1,389	1,802	1,791	3,807	3,875	15,803
Total	2014	1,595	3,501	1,150	2,578	2,785	3,351	8,431	7,844	31,234
	2015	1,521	3,438	1,076	2,527	2,961	3,223	8,352	8,010	31,106
	2016	1,568	3,424	1,045	2,475	3,071	3,175	8,182	8,146	31,086
	2017	1,556	3,409	984	2,373	3,109	3,150	7,927	8,285	30,793
	2018	1,612	3,430	1,003	2,561	3,285	3,362	7,817	8,409	31,480

0004 AF-C-42nd MEDGRP-MAXWELL						
Gender by Ben Cat Common						
Gender	FY	ADFM	RET	OTHER	AD	Total
Female	2014	4,109	823	10,008	834	15,773
	2015	3,848	876	10,099	817	15,641
	2016	3,846	902	10,000	856	15,604
	2017	3,663	942	9,957	889	15,451
	2018	3,723	950	10,004	1,000	15,676
Male	2014	2,620	7,172	2,549	3,121	15,461
	2015	2,438	7,191	2,831	3,007	15,466
	2016	2,479	7,138	2,720	3,145	15,483
	2017	2,416	7,074	2,813	3,040	15,343
	2018	2,417	6,986	3,062	3,339	15,803
Total	2014	6,729	7,995	12,556	3,955	31,234
	2015	6,286	8,067	12,930	3,824	31,106
	2016	6,325	8,040	12,720	4,001	31,086
	2017	6,078	8,016	12,770	3,929	30,793
	2018	6,140	7,935	13,066	4,339	31,480

¹ Source: M2 DEERS Person Detail

Update History

- ❑ Version 1: New portfolio template. Direct Care costs for FY13 are based on FY13 MEPRS expenses; FY14 is based on FY13 MEPRS with inflation factors applied. May 2015.
- ❑ Version 2: Updated FY14 data; added FY15 data; added Pharmacy, Radiology, and Laboratory data; added additional views of eligible data; added Ambulatory Surgery Top 20 Procedures. FY14 Direct Care Costs are based on FY14 MEPRS expenses; FY15 Direct Care Costs are based on FY14 MEPRS with inflation factors applied. March 2016.
- ❑ Version 3: Updated FY15 data; added FY16 data; added Appointment Data. FY15 Direct Care Costs are based on FY15 MEPRS expenses; FY16 Direct Care Costs are based on FY15 MEPRS with inflation factors applied. March 2017.
- ❑ Version 4: Updated FY16 data; added FY17 data. FY16 Direct Care Costs are based on FY16 MEPRS expenses; FY17 Direct Care Costs are based on FY16 MEPRS with inflation factors applied. March 2018.
- ❑ Version 5: Updated FY17 data; added FY18 data. FY17 Direct Care Costs are based on FY17 MEPRS expenses; FY18 Direct Care Costs are based on FY17 MEPRS with inflation factors applied. March 2019.