



436th Medical Group, Dover Air Force Base (AFB) Volume II

Table of Contents

Part	Page
A. Data Call	3
B. Relevant Section 703 Report Detail	7
C. DHA TRICARE Health Plan Network Review	8
D. Network Insight Assessment Summary (Independent Government Assessment)	13
E. P4I Measures	28
F. JOES-C	45
G. Base Mission Brief	56
H. Mission MTF Brief	74
I. MTF Portfolio (Full)	88

Part A: Dover AFB Data Call (1 of 4)

Mission Readiness

MTF Name	MTF DMIS ID	Assigned Deployable Capability	Officer	Enlisted	ARC	Civ
Dover AFB	0036	FFGRL	1	3	0	0
Dover AFB	0036	FFPM1	3	1	0	0
Dover AFB	0036	FFPM2	0	2	0	0
Dover AFB	0036	FFPPS	1	0	0	0
Dover AFB	0036	FFPS3	WRM			
Dover AFB	0036	FFPS4	WRM			
Dover AFB	0036	FFGR1	WRM			
Dover AFB	0036	9AFS2	0	1	0	0
Dover AFB	0036	FFGLE	1	11	0	0
Dover AFB	0036	FFPME	2	6	0	0
Dover AFB	0036	FFLG1	0	2	0	0
Dover AFB	0036	FFZZZ-1	13	28	0	0
Dover AFB	0036	FFZZZ-2	10	34	0	0
Dover AFB	0036	FFZZZ-3	17	30	0	0

Medical Hold

# Medical hold beds	Line or medical funded?	How do you execute medical hold?	What is your definition of medical hold?
NA	NA	NA	NA

Part A: Dover AFB Data Call (2 of 4)

Installation

Installation Name	MTF DMIS ID	Affiliated Location Name	Installation Mission	Medical Units assigned to mission
Dover AFB	0036	436 MDG	AFMES	436 AMDS/SGD, 436 MDSS/SGSA
Dover AFB	0036	436 MDG	Medical equipment (e.g., first aid kits & defibs) accountability and maintenance	436 MDSS/SGSM
Dover AFB	0036	436 MDG	BOMC	436 AMDS/SGPF
Dover AFB	0036	436 MDG	Food and water safety	436 AMDS/SGPM, 436 AMDS/SGPB
Dover AFB	0036	436 MDG	Currency (e.g., SABC & BLS)	436 MDOS/SGOP

Part A: Dover AFB Data Call (3 of 4)

Line Mission Elements

Installation Name	MTF DMIS ID	Line Units Served	Unit Mission	Personnel Assigned				Organic Medical Personnel				MTF Support to line medical staff
				OFF	ENL	RC	CIV	OFF	ENL	RC	CIV	
Dover AFB	0036	436 AW / 512 AW	C-5M, C-17 airlift capabilities	330	3042	1750	1034	49	121	0	42	Pharmacy, lab, primary care, women's health, medical logistics, mental health, patient administration, BOMC, credentialing, food/water safety, ambulance services

Medical Education and Training

Name of Program	Certified DOD New Starts	Number in Program	Program Length	Non-Military Users	Associated locations	Comments
USU FNP Residency phase 2		1	6 weeks	0	women's health/family practice	anticipated 2 FNP students per semester summer start
Dental hygienist TAA				16	dental clinic	Delaware Tech
ARC annual training		varies	2 weeks		host ARC unit for medical readiness training	

Part A: Dover AFB Data Call (4 of 4)

Exceptional Family Member Program Summary Report

MTF Medical Specialties Supporting EMF

Family Practice
Pediatrics
Women's Health

Network Specialties Supporting EMF

Allergy/Immunology (Peds and Adult)	Maternal Fetal Medicine	Reproductive Endocrinology
Audiology	Mental Health	Rheumatology
Behavioral Health	Nephrology	Speech Therapy
Cardiology (Peds and Adult)	Neurology (Peds and Adult)	Surgery (Colon & Rectal)
Case Management	Nuclear Medicine	Surgery (ENT)
Dermatology (Peds and Adult)	Nutrition Consult	Surgery (Neurosurgery)
Developmental Medicine	OB/GYN	Surgery (Oral)
Disease Management	Occupational Therapy	Surgery (Orthopedics)
Endocrinology (Ped and Adult)	Ophthalmology (Peds and Adult)	Surgery (Plastic)
ENT (Peds and Adult)	Orthopedic Surgery	Surgery (Vascular)
Gastroenterology (Peds and Adult)	Physical Therapy	Urgent Primary Care
Genetics	Podiatry	Urology
General Surgery (Peds and Adult)	Primary Care	
Hematology/Oncology	Psychiatry (Peds and Adult)	
Infectious Disease	Pulmonology (Peds and Adult)	
Internal Medicine	Radiation Therapy	
	Radiology	

Number of EFM Supported

Community	#
Q-Coded Cases	366
Family Members with Special Needs Associated with Active Cases	491
Families with 1 Special Needs Family Member	269
Families with 2 Special Needs Family Member	70
Families with 3 or more Special Needs Family Member	25
Family Members with Special Needs Age 0-17	282
Family Members with Special Needs Age 18+	209
Family Members with Educational/EFSP Needs	36
Family Members with Medical Needs	332
Family Members with Both Educational and Medical Needs	51
Family Members with Risk of Developmental Delay	50

Part B: Relevant Section 703 Report Detail

Markets	Inpatient		Ambulatory		Provider Workload Adjustment	
	Reported wRVU	Adjusted w/RVU	Reported wRVU	Adjusted w/RVU	Inpatient only	Combined Amb & Inpt
0001 – AHC FOX-REDSTONE ARSENAL	258	305	77,266	77,266	18%	0.1%
0036 – AF-C-436 th MED GRP-DOVER	513	630	66,258	66,258	23%	0.2%
0043 – Tyndall-Panama City	457	523	81,223	81,223	15%	0.1%
0046 – AF-C-45 th MED GRP-PATRICK	197	248	65,706	65,706	26%	0.1%

Facility	Military Service	Product Line	Direct Care Full Cost	Direct Care SRVU (GPCI)	Direct Care Full Cost / SRVU	Direct Care SRVU Cost Ratio
AF-C-436 th MED GRP-DOVER	F	IMSUB	\$24,647	\$367	\$67	1.9
	F	MH	\$2,930,127	\$15,599	\$188	5.2
	F	OBGYN	\$335,368	\$5,916	\$57	1.6
	F	OPTOM	\$635,304	\$10,551	\$60	1.7
	F	ORTHO	\$704,969	\$11,728	\$60	1.7

Facility	Clinic Specialty	Encounters	Evaluated Visits	RVU	Estimated Network Ability to Absorb Workload
AF-C-436 th MED GRP-DOVER	OB/GYN CLINIC	3,357	1,613	5,892	Green
AF-C-436 th MED GRP-DOVER	PT/OT	4,736	1,420	9,737	Green
AF-C-436 th MED GRP-DOVER	BEHAVIORAL HEALTH CLINIC	10,261	5,464	17,068	Green
AF-C-436 th MED GRP-DOVER	PEDIATRIC CLINIC	12,381	6,635	17,015	Green

Part C: DHA TRICARE Health Plan Network Review



Information Briefing Network Capabilities Delaware/New Jersey Prime Service Areas 20 Mar 2019



“Medically Ready Force...Ready Medical Force”

Part C: DHA TRICARE Health Plan Network Review

Problem Statement



Request by NDAA 703 Workgroup to provide an assessment of the capability of the purchased care network to absorb clinic workload and enrollment currently being provided at **87th Med Grp McGuire, NJ; BMC Lakehurst, NJ; BMC Colts Neck Earle; 436th Med Grp-Dover, DE**

Part C: DHA TRICARE Health Plan Network Review

Methodology Overview



- Using M2/DHA Portfolios workload data, THP quantifies MTF capabilities /capacity/enrollment projected to shift to Purchased Sector Care (PSC) Market
 - Specialty care is defined as a 60-minute drive from physical address to specialist location. Assuming most beneficiaries live on post that are enrolled to the MTF, the network assessments will use 40 miles (urban) and 55 miles (rural) to approximate drive-time.
 - Primary care is defined as a 30-minute drive from physical address to address of PCM location. Assuming most beneficiaries live on post that are enrolled to the MTF, the network assessments will use 15 miles (urban) and 30 miles (rural) to approximate drive-time. PCPs generally have relatively full panels. Assuming the MCSC could contract 50% of the community non-network PCMs within the respective mile radius, an additional empanelment per provider is calculated.
- Utilizing workload data provided by THP, MCSC identifies/quantifies current PSC capabilities/capacity to absorb MTF workload
- THP summarizes ability of PSC to meet the new demand for services projected to shift from the MTF to PSC

Specialty Legend:

- **Green:** No anticipated problems meeting workload with ATC standards.
- **Yellow:** Current or Potential for increased appointment wait time and/or drive time.
- **Red:** Anticipate exceeding appointment wait time and/or drive time standards.

Primary Care Legend:

- **Green:** Up to 2.5% more enrollees (<49) easily
- **Yellow:** 2.5% - 5% (50-99) with moderate difficulty
- **Red:** > 5% (100+) with great difficulty

“Medically Ready Force...Ready Medical Force”

Part C: DHA TRICARE Health Plan Network Review

PSC Assessment 436th Med Grp-Dover PSA *Civilian Network Capabilities*



MCSC ASSESSMENT OF CIVILIAN NETWORK CAPABILITIES

- **Primary Care:** Current capabilities: (green). Capabilities with absorbed workload: (red)
- **Mental Health:** Current capabilities: (green). Capabilities with absorbed workload: (green)
- **OB/GYN:** Current capabilities: (green). Capabilities with absorbed workload: (yellow)
- **Optometry:** Current capabilities: (green). Capabilities with absorbed workload: (green)
- **Physical Therapy:** Current capabilities: (green). Capabilities with absorbed workload: (green)

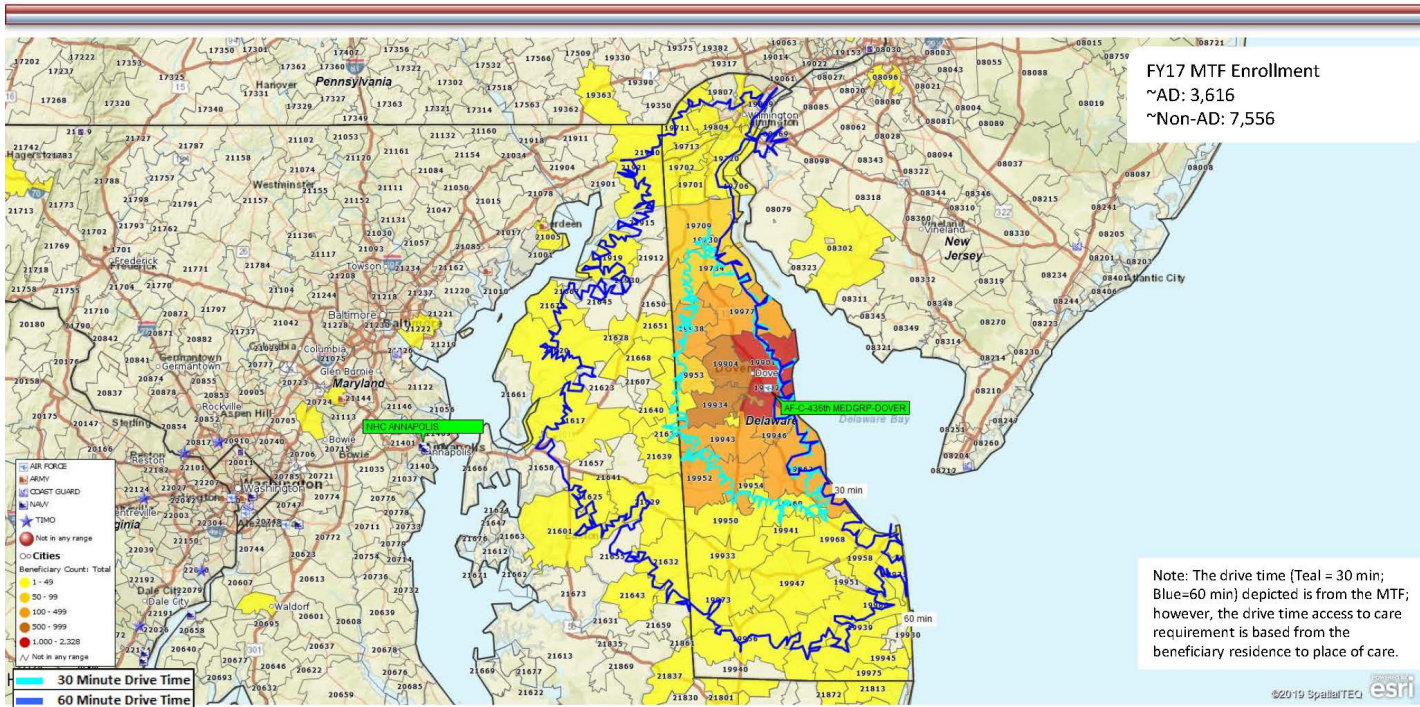
Considerations:

- Within a 15-mile radius of 436th Med Grp, 34 TRICARE Primary Care Managers (PCMs) are currently accepting new patients. Assuming the MCSC could contract 50% of the 24 non-network PCMs within the 15-mile radius, each PCM would have to empanel 164 beneficiaries.
- There are seven network facilities within drive time of 436th Med Grp-Dover that offer like services currently provided by the MTF with more than adequate access to care.
- There are five urgent care centers within 25 miles of 436th Med Grp-Dover .
- When shifting workload to the network, a phased approach should be developed.
- There are 110 OB/GYN providers contracted; however, OB/GYN is currently just over access standards, 29.2 avg days to care. Adding more OB/GYN to the network could possibly increase days to care.
- Case managed enrollees should have a warm hand-off to the MCSC.

“Medically Ready Force...Ready Medical Force”

Part C: DHA TRICARE Health Plan Network Review

436th Med Grp-Dover TRICARE Non-AD MTF Enrollees





MHS Section 703 Workgroup

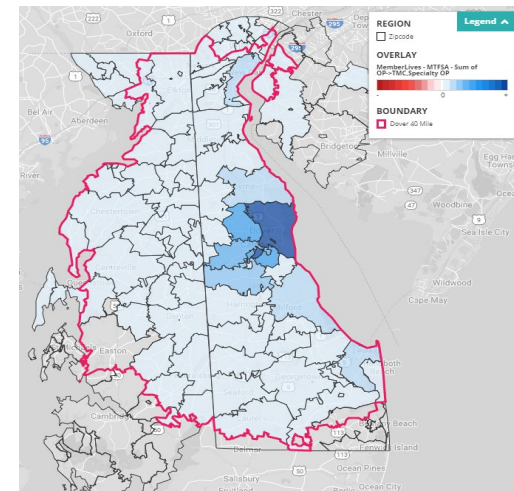
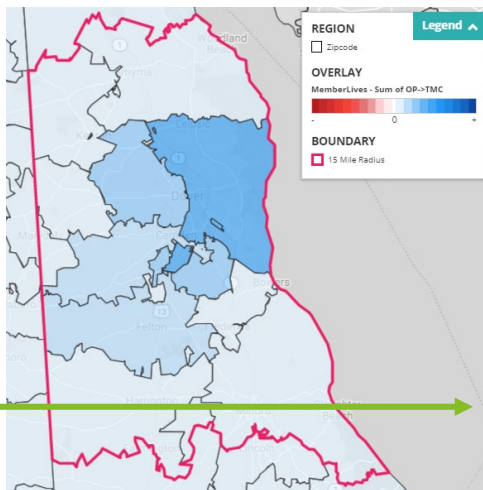
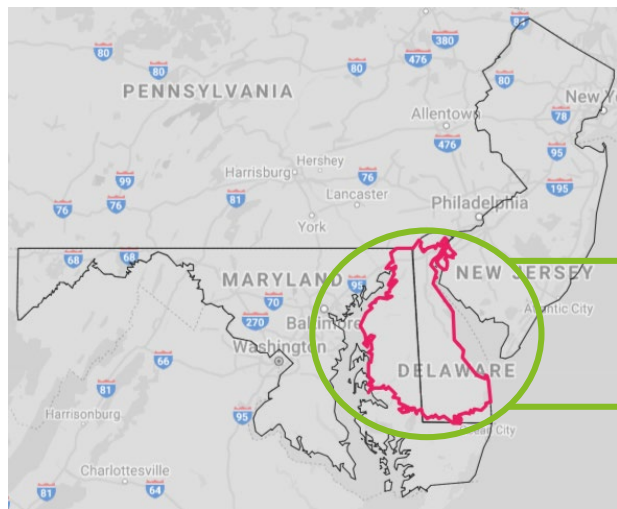
Dover Network Assessment

Discussion

16 April 2019

Network Assessment: Dover (1 of 2)

Scenario: AF-C-436th MEDGRP-Dover is being evaluated for conversion from outpatient / ambulatory clinic to Service Member and Occ Health-only facility



- 99% of non-AD MTF Prime & Plus beneficiaries are living within the 30-minute drive-time boundary for Primary Care, concentrated around the MTF location
- 99% of MTF Prime, Reliant & Medicare Eligible beneficiaries are living within the 60-minute drive-time boundary for Specialty Care, concentrated around the MTF location

Note: Dover radiuses adjusted to account for Delaware river crossings as follows:

- NJ zip codes within 3 miles of I-295 crossing included in 40 mile radius

Primary Care Impacted Beneficiaries	Within 30-min	Within 60-min	Outside 60-min
Non-AD MTF Prime ¹	7,008	69	0
Plus	41	1	0
Total	7,049	70	0

1: Includes 90 Medicare Eligible MTF Prime beneficiaries

Specialty OP Impacted Beneficiaries	Within 30-min	Within 60-min	Outside 60-min
MTF Prime ²	10,437	525	2
Reliant	178	120	0
Medicare Eligible	3,494	1,999	56
Total	14,109	2,645	58

2: Includes 96 Medicare Eligible MTF Prime beneficiaries

Impacted Beneficiaries:

Specialty OP (if applicable): MTF Prime + Reliant + Medicare Eligible (OP Workload) (MTF Service Area ID)

PC: Non-AD MTF Prime + Plus (PRISM Area ID)

Note: To estimate the geographic market within a 30-minute, and 60-minute, drive time of the MTF, we assumed an average driving speed of 30 MPH, and thus a 15 mile radius for the 30-minute standard, and a 40 mile radius for the 60-minute standard, around the Zip code of the MTF was determined as the geographic market

Network Assessment: Dover (2 of 2)

The proportion of MHS Beneficiaries to the total area population is well below the 10% threshold for the 30-minute and 60-minute drive time radii, thus the impact of MHS beneficiaries entering the commercial market will not materially impact the projected demand for services in the Dover Market

Age Group	MHS Impacted Population	% of Total MHS Impacted Population	30-Min Radius Population Total	% of Population Total	Impacted Population Introduced
0 to 4	866	12.2%	12,178	6.3%	7.1%
5 to 14	1,395	19.6%	24,964	12.9%	5.6%
15 to 17	405	5.7%	7,324	3.8%	5.5%
18 to 24	733	10.3%	20,057	10.4%	3.7%
25 to 34	771	10.8%	25,288	13.1%	3.0%
35 to 44	705	9.9%	22,703	11.8%	3.1%
45 to 64	2,204	31.0%	49,036	25.4%	4.5%
65 and over	42	0.6%	31,552	16.3%	0.1%
Total	7,119	100.0%	193,102	100.0%	3.7%

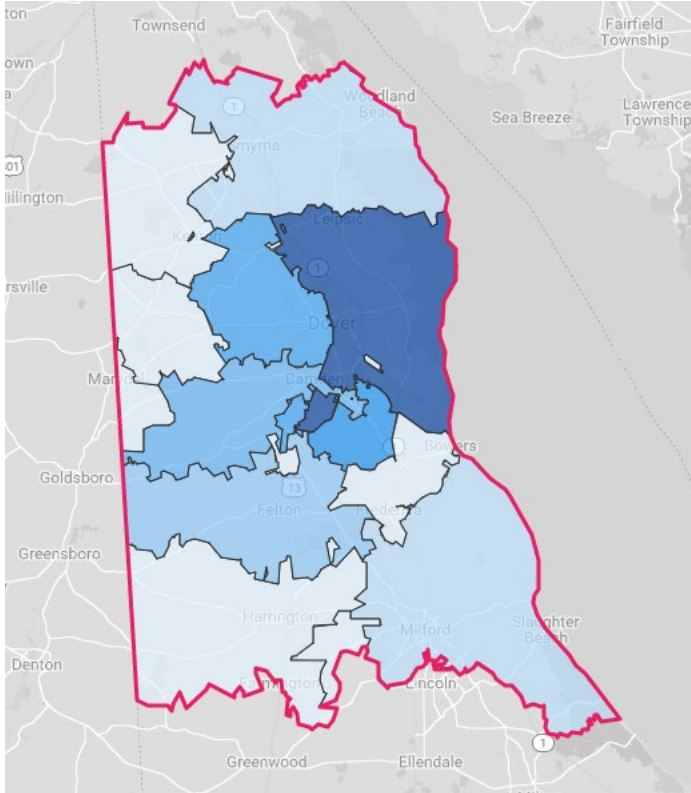
Primary Care:
Non-AD MTF
Prime, and Plus
Population

Age Group	MHS Impacted Population	% of Total MHS Impacted Population	60-Min Radius Population Total	% of Population Total	Impacted Population Introduced
0 to 4	878	5.2%	77,334	6.0%	1.1%
5 to 14	1,448	8.6%	161,613	12.4%	0.9%
15 to 17	420	2.5%	50,142	3.9%	0.8%
18 to 24	2,129	12.7%	124,438	9.6%	1.7%
25 to 34	2,512	14.9%	166,054	12.8%	1.5%
35 to 44	1,380	8.2%	158,196	12.2%	0.9%
45 to 64	2,692	16.0%	346,229	26.7%	0.8%
65 and over	5,354	31.8%	214,736	16.5%	2.5%
Total	16,811	100.0%	1,298,742	100.0%	1.3%

Specialty OP:
MTF Prime,
Reliant, and
Medicare Eligible
Population

Dover: Network Adequacy Analysis (1 of 4)

Primary Care



- The above geography represents a 15-mile radius, which was used due to this geography being an **urban area**
- The identified drive time **includes 22 zip codes and three partial counties** (*Kent, Newcastle, Sussex*)
- **Of the 7,119 impacted primary care beneficiaries** attributed to Dover, **99% are represented within the 15-mile radius boundary**

Key

- = 15-mile (30-minute) boundary
- = Density of beneficiaries by zip code

Specialty	Number of Practice	
	Sites	Number of Physicians
Family Practice	27	38
Internal Medicine	21	24
Pediatrics	15	28
Grand Total	63	90

Dover: Network Adequacy Analysis (2 of 4)

Commercial primary care providers within the 30-minute drive-time standard *may challenged to accept* the specific demand from the **7,119** impacted beneficiaries

Select View: Supply | Display Options: Market Client | Supply Legend: Low to High

Specialty Rollup	Specialty	Total	Kent	New Castle	Sussex
Primary Care	General/Family Practice	418	59	288	71
Primary Care	Internal Medicine	339	36	235	68
Primary Care	Pediatrics	224	21	176	27

Current Supply (Not Limited to TRICARE)

- The supply of primary care physicians is concentrated in New Castle county, which sits adjacent to Kent county where the MTF is located and 96% of beneficiaries reside

Select View: Demand | Display Options: Market Client | Demand Legend: Low to High

Specialty Rollup	Specialty	Total	Kent	New Castle	Sussex
Primary Care	General/Family Practice	527	106	275	146
Primary Care	Internal Medicine	384	74	194	116
Primary Care	Pediatrics	167	36	90	41

Forecasted Demand

- High population growth over the last five years (2014 to 2018) of 9.8% has increased the demand for Pediatric and PC specialties
- Moderate 3.4% growth is forecasted for the next five years (2019 to 2023)

Select View: (Shortage)/Surplus | Display Options: Market Client | Show Values As: Percentages Numbers | Shortage Legend: High to Low | Surplus Legend: Low to High

Specialty Rollup	Specialty	Total	Kent	New Castle	Sussex
Primary Care	General/Family Practice	(109)	(47)	13	(75)
Primary Care	Internal Medicine	(45)	(38)	41	(48)
Primary Care	Pediatrics	57	(15)	86	(14)

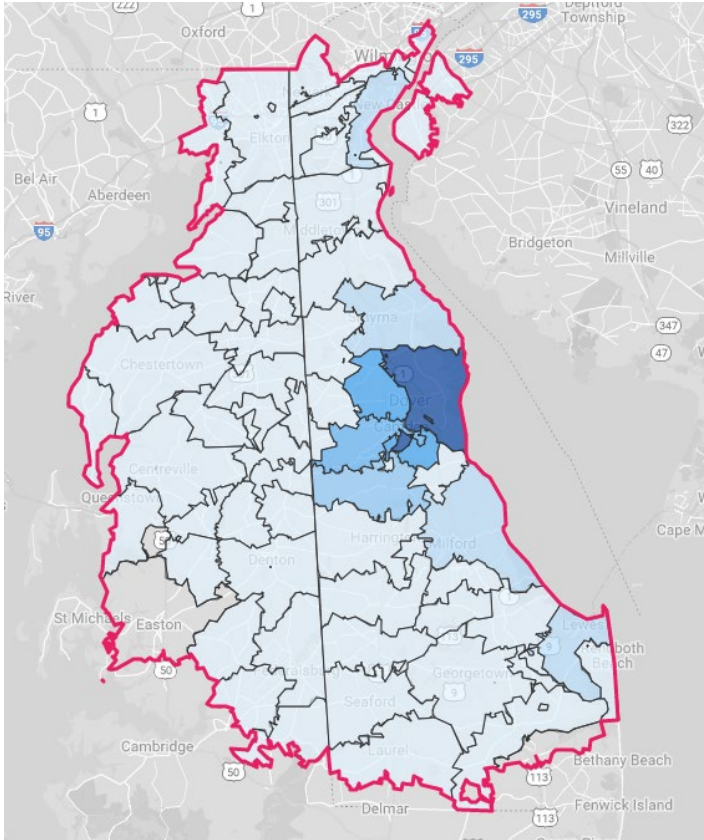
Resulting Shortage/Surplus

- The market is projected to have a shortage of primary care providers over the next five years (2018 to 2023) in Kent County where the MTF is located, but a surplus in nearby New Castle county
- The market may **be challenged to accept the incremental demand of impacted TRICARE beneficiaries**

*County in which MTF is located

Dover: Network Adequacy Analysis (3 of 4)

Specialty Care



Key

- = 40-mile (60-minute) boundary
- = Density of beneficiaries by zip code

- The above geography represents a 40-mile radius, which was used due to this geography being an **urban area**
- The identified drive time **includes 88 zip codes, three complete counties (Caroline, Kent (DE), Kent (MD)), and seven partial counties (Cecil, Dorchester, New Castle, Queen Anne's, Salem, Sussex, Talbot)**
- **Of the 16,811 impacted specialty care beneficiaries attributed to Dover, 99% are represented within the 40-mile radius boundary**

Specialty	Number of Practice Sites	Number of Physicians
Obstetrics / Gynecology	55	110
Psychiatric	54	92
Grand Total	109	202



Dover: Network Adequacy Analysis (4 of 4)

The **Psychiatry providers** within the **60-minute drive-time** standard *may be challenged to* accept the specific demand from the **16,811** impacted beneficiaries

Select View:

Display Options: Market Client

Supply Legend: Low to High (Blue gradient)

Specialty Rollup	Specialty	Total	Kent*	New Castle	Sussex	Caroline	Cecil	Dorchester	Queen Anne's	Talbot	Salem
Medical Specialist	Psychiatry	169	3	99	11	0	5	21	2	7	5
Surgical Specialty	Obstetrics/Gynecology	153	4	86	21	0	11	1	0	10	3

Current Supply (Not Limited to TRICARE)

- The majority of the supply of specialty care providers are located in New Castle county, which sits adjacent to Kent county where the MTF is located and 81% of beneficiaries reside

Select View:

Display Options: Market Client

Demand Legend: Low to High (Green gradient)

Specialty Rollup	Specialty	Total	Kent*	New Castle	Sussex	Caroline	Cecil	Dorchester	Queen Anne's	Talbot	Salem
Medical Specialist	Psychiatry	211	3	85	44	4	17	4	7	4	9
Surgical Specialty	Obstetrics/Gynecology	219	4	91	41	5	18	5	7	6	8

Forecasted Demand

- Population growth over the last five years (2014 to 2018) has been strong at 7.0%, which is projected to level out at 3.1% over the next five years

Select View:

Display Options: Market Client

Show Values As: Percentages Numbers

Shortage Legend: High to Low (Blue gradient)

Surplus Legend: Low to High (Green gradient)

Specialty Rollup	Specialty	Total	Kent*	New Castle	Sussex	Caroline	Cecil	Dorchester	Queen Anne's	Talbot	Salem
Medical Specialist	Psychiatry	(42)	0	14	(33)	(4)	(12)	17	(5)	3	(4)
Surgical Specialty	Obstetrics/Gynecology	(66)	0	(5)	(20)	(5)	(7)	(4)	(7)	4	(5)

Resulting Shortage/Surplus

- We expect an overall **shortage** of select specialty care providers over the next five years (2018 to 2023) in the market area, although there is projected to be an adequate supply in Kent County where the MTF is located
- The market may **be challenged to accept the incremental demand of impacted TRICARE beneficiaries**

*County in which MTF is located

Dover: Targeted Practice Profiles (1 of 4)

Based on the number of primary care practices accepting TRICARE or other government-sponsored insurance and offering after hours care, a number of providers are projected to meet MHS access standards

Primary Care Practice Profiles

Practice Site Size	Number of Practice Sites	Average Number of Physicians per Site
Small (1-4)	62	1.7
Medium (5-9)	1	6.0
Grand Total	63	1.8

Practice Name	Monthly Extended Hours
Bayhealth Medical Center Memorial Hospital	105.0
Nemours duPont Pediatrics	18.0
Walk In Medical Care & Occupational Health	13.0
The Center For Pediatrics & Adolescent Medicine	10.0
Bright Future Pediatrics	7.0
Westside Family Healthcare	4.0
Dover Family Physicians	3.0
Christiana Care Smyrna Family Practice	2.0
Family Medicine Of Smyrna Clayton	2.0
Heal Medical Group	1.0
Jack R Milligan MD	1.0
Grand Total	166.0

HS Alignment	Count of Name	Sum of Site Physician Count
Other	8	17
Unknown	55	73
Grand Total	63	90

Hospital Alignment	Number of Practice Sites	Number of Physicians
Bayhealth Medical Center At Kent General	27	55
(Aligned to Multiple Hospitals)	17	22
Bayhealth Medical Center	7	11
Christiana Hospital	4	2
Bayhealth - Milford Memorial Hospital	1	
Bayhealth Hospital, Kent Campus	5	
West Georgia Medical Center, Inc	1	
Alfred I Dupont Hospital For Children	1	
Grand Total	63	90

Practices without a physician count have either opted to not participate in data.medicare.gov or have declined to answer survey questions

Dover: Targeted Practice Profiles (2 of 4)

Based on the number of Psychiatry practices accepting TRICARE or other government-sponsored insurance and offering after hours care, a number of providers are projected to meet MHS access standards

Psychiatry Practice Profiles

Practice Site Size	Number of Practice Sites	Average Physicians per Site
Small (1-4)	49	1.6
Medium (5-9)	4	5.5
Large (10+)	1	10.0
Grand Total	54	2.2

Practice Name	Monthly Extended Hours
Rockford Center Psychiatry	105.0
Meadowwood Behavioral Health System	89.0
Delaware Guidance Services For Children & Youth	24.0
Connections Community Support Programs	19.0
Kent Sussex Counseling Services	18.0
Healthcare Commons Inc	17.0
Eastern Shore Psychological Services	13.0
Mid Atlantic Behavioral Health	12.0
Center For Mental Wellness	12.0
Norman Broudy MD & Associates	12.0
Delaware Guidance Services	12.0
Mind & Body Consortium	12.0
Grand Total	345.0

HS Alignment	Number of Practices	Number of Physicians
Other	4	14
(Aligned to Multiple Health Systems)	48	75
Christiana care health system	2	3
Grand Total	54	92

Hospital Alignment	Number of Practice Sites	Number of Physicians
(Aligned to Multiple Hospitals)	34	61
Rockford Center	2	9
Meadowwood Behavioral Health	1	6
Memorial Hospital Salem County	1	3
University Of Maryland Shore Medical Cent	1	2
Christiana Hospital	2	2
Nemours Alfred I Dupont Hospital For Chil	1	2
Bayhealth Medical Center At Kent General	1	2
Eastern Shore Hospital Center	1	1
Medstar Union Memorial Hospital	1	1
Wilmington Hospital	1	1
Beebe Healthcare	1	1
Delaware Psychiatric Center	1	1
University Of Md Shore Medical Center At Easton	1	
St Francis Hospital	1	
Bayhealth Hospital, Kent Campus	1	
Beebe Medical Center	1	
Bayhealth - Milford Memorial Hospital	1	
Union Hospital Of Cecil County	1	
Grand Total	54	92

Practices without a physician count have either opted to not participate in data.medicare.gov or have declined to answer survey questions

Dover: Targeted Practice Profiles (3 of 4)

Based on the number of Psychiatry practices accepting TRICARE or other government-sponsored insurance and offering after hours care, a number of providers are projected to meet MHS access standards

Obstetrics / Gynecology Practice Profiles

Practice Site Size	Number of Practice Sites	Average Physicians per Site
Small (1-4)	48	1.8
Medium (5-9)	7	6.1
Grand Total	55	2.4

Practice Name	Monthly Extended Hours
Bayhealth Maternal Fetal Medicine	5.0
Delaware Center For Maternal & Fetal Medicine	5.0
Reproductive Associates Of Delaware	3.0
Nanticoke Gynecology Associates PA	3.0
Delaware Institute Reproductive Medicine	3.0
Planned Parenthood Of Delaware	3.0
Planned Parenthood Of Maryland	2.0
Alpha Health Centers	2.0
Mercy Care For Womens Health	2.0
Delaware Gynecology	1.0
Khan Obstetrics & Gynecology	1.0
Christiana Center-Womens Wellness	1.0
Grand Total	31.0

HS Alignment	Number of Practices	Number of Physicians
Other	3	7
(Aligned to Multiple Health Systems)	46	85
Christiana care health system	5	16
Anne arundel health system	1	2
Grand Total	55	110

Hospital Alignment	Number of Practice Sites	Number of Physicians
Christiana Hospital	20	51
Bayhealth Medical Center At Kent General (Aligned to Multiple Hospitals)	5	15
Beebe Healthcare	8	13
Nanticoke Memorial Hospital	3	11
Union Hospital Of Cecil County	4	5
University Of Maryland Shore Medical Cent	4	5
Bayhealth Medical Center	3	4
Saint Francis Healthcare	2	3
Virtua Memorial Hospital	1	2
Bayhealth - Milford Memorial Hospital	1	1
Beebe Medical Center	2	
Grand Total	55	110

Practices without a physician count have either opted to not participate in data.medicare.gov or have declined to answer survey questions

Targeted Practice Profiles: Dover (4 of 4)

While ability and willingness to accept TRICARE patients must be confirmed, the majority of providers in the Dover market are accepting government-sponsored insurance, and many are already contracted to provide services to TRICARE beneficiaries

Primary Care Providers

Likelihood of offering services to TRICARE members	Number of Sites	Number of Physicians
Contracted with TRICARE	44	76
High Likelihood*	4	3
Medium Likelihood	14	10
Low Likelihood	1	1
Grand Total	63	90

Psychiatric Providers

Likelihood of offering services to TRICARE members	Number of Sites	Number of Physicians
Contracted with TRICARE	9	5
High Likelihood*	1	
Medium Likelihood	36	77
Low Likelihood	8	10
Grand Total	54	92

Obstetrics / Gynecology Providers

Likelihood of offering services to TRICARE members	Number of Sites	Number of Physicians
Contracted with TRICARE	17	44
High Likelihood*	7	8
Medium Likelihood	27	54
Low Likelihood	4	4
Grand Total	55	110

Contracted Practice Sample	Specialty
Apogee Physicians	Internal Medicine
Bayhealth Smyrna Family Practice	Family Practice
Family Medical Centre	Family Practice
Kent Pediatrics	Pediatrics
Kirk Family Practice	Family Practice
Bright Future Pediatrics	Pediatrics
Central Delaware Family Medicine	Family Practice
Dover Family Physicians	Family Practice
Living Great	Obstetrics/Gynecology
Delaware Gynecology	Obstetrics/Gynecology
Delaware Institute Reproductive Medicine	Obstetrics/Gynecology
Womencare PA	Obstetrics/Gynecology
Meera Wells MD	Psychiatric
Sussex Community Mental Health	Psychiatric
University Of Delaware Psychiatry	Psychiatric
Justin G Wade MD	Psychiatric

Currently Contracted - The provider organization has a history of submitting In-Network claims to TRICARE

High Likelihood* - The provider organization has a history of submitting Out-of-Network claims to TRICARE

Medium Likelihood - Providers are accepting Medicare and/or Medicaid

Low Likelihood - The provider organization has a history of not accepting Government Sponsored Health Plan patients

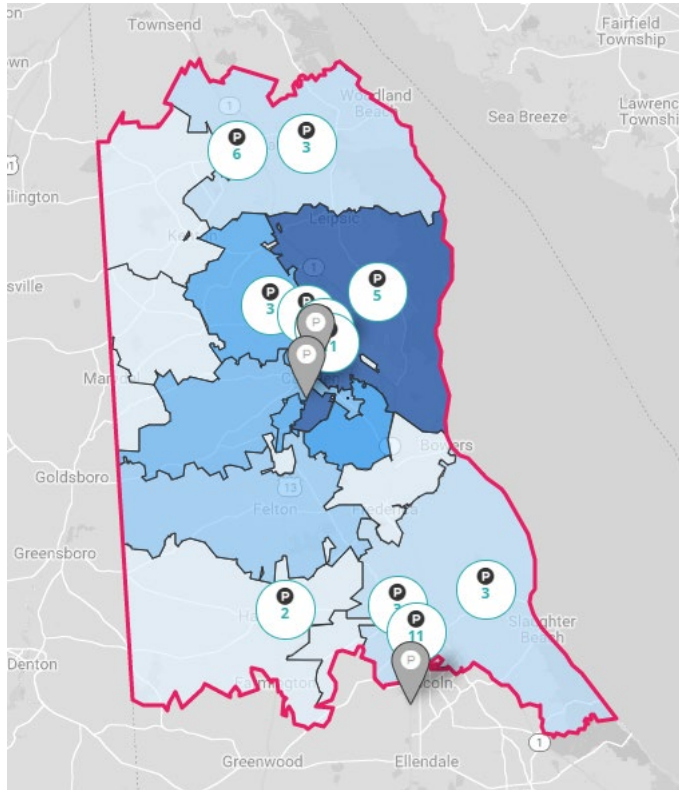
*Note: The current TPA providing claims processing services for the TRICARE FOR LIFE beneficiary designation do not provide an "In-Network" designation during the claims process. These provider claims are marked as Out-of-Network by default

Appendix A

1. Alternate Slides

Dover: Network Adequacy Analysis (1 of 4)

Primary Care



Key

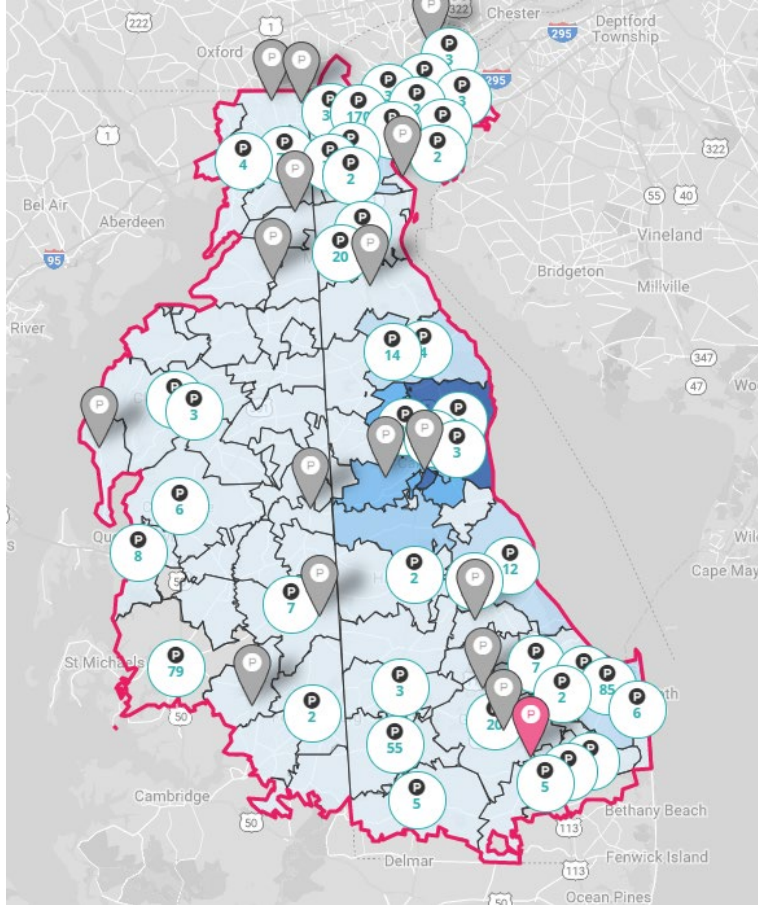
- = 15-mile (30-minute) boundary
- = Density of beneficiaries by zip code

- The above geography represents a 15-mile radius, which was used due to this geography being an **urban area**
- The identified drive time **includes 22 zip codes and three partial counties** (*Kent, Newcastle, Sussex*)
- **Of the 7,119 impacted primary care beneficiaries** attributed to Dover, **99% are represented within the 15-mile radius boundary**

Specialty	Number of Practice Sites	Number of Physicians
Family Practice	27	38
Internal Medicine	21	24
Pediatrics	15	28
Grand Total	63	90

Dover: Network Adequacy Analysis (3 of 4)

Specialty Care



Key

- = 40-mile (60-minute) boundary
- = Density of beneficiaries by zip code

- The above geography represents a 40-mile radius, which was used due to this geography being an **urban area**
- The identified drive time **includes 88 zip codes, three complete counties (Caroline, Kent (DE), Kent (MD)), and seven partial counties (Cecil, Dorchester, New Castle, Queen Anne's, Salem, Sussex, Talbot)**
- **Of the 16,811 impacted specialty care beneficiaries attributed to Dover, 99% are represented within the 40-mile radius boundary**

Specialty	Number of Practice Sites	Number of Physicians
Obstetrics / Gynecology		110
Psychiatric		92
Grand Total	109	202

Network Assessment: Dover

The table below breaks out the potentially impacted TRICARE beneficiaries by county of residence that could potentially be impacted by facility conversion.

County	Delaware			Maryland						New Jersey
	Kent	New Castle	Sussex	Caroline	Cecil	Dorchester	Kent	Queen Anne's	Talbot	Cumberland
Primary Care (Non-AD MTF Prime, Plus)	6,804	0	298	16	0	0	0	0	0	0
	95.6%	0.0%	4.2%	0.2%	0.0%	0.0%	0.0%	0.0%	0.0%	0.0%
Specialty OP (Prime, Reliant, Medicare Eligible)	13,584	574	2,275	214	1	42	16	41	7	58
	80.8%	3.4%	13.5%	1.3%	0.0%	0.2%	0.1%	0.2%	0.0%	0.3%

Primary Geography for Evaluation:

Primary Care Services:

- Kent (DE)

Specialty Care Services:

- Kent (DE), Sussex

Secondary Geography for Evaluation:

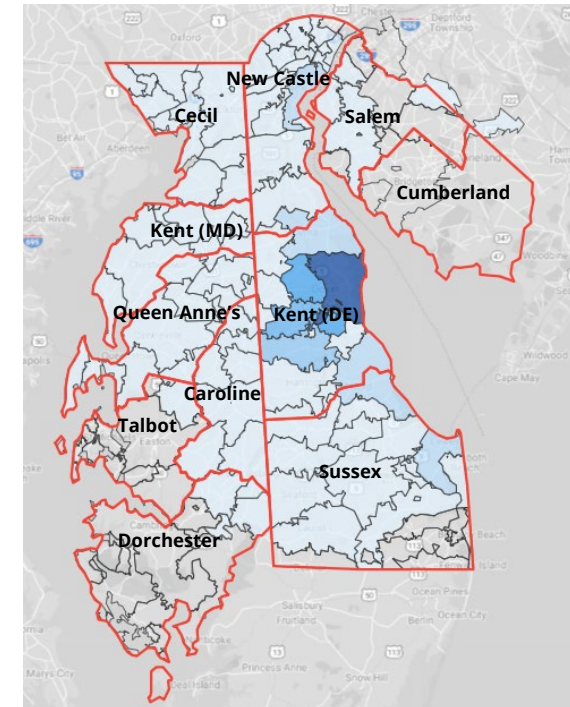
Primary Care Services:

- Sussex, Caroline

Specialty Care Services:

- New Castle, Caroline, Cecil, Dorchester, Kent (MD), Queen Anne's, Talbot, Cumberland

Drive-time boundary is the county that encompasses zip codes within drive time radius from MTF



Primary Network Adequacy Evaluation

Secondary Network Adequacy Evaluation

Part E: P4I Measures (1 of 17)

MHS Dashboard - AF-C-436th MEDGRP-DOVER

All CI RMG TRN My
Filter

Export
   

View as of

Apply Clear

Layout

Go back to: [MHS](#) > [AMC](#)

Readiness- **Medically** Ready Force

Individual Medical Readiness
(IMR)

Current Data Date

Freq of Update

Quarterly



Deployment Limiting Med/Dent Condition to fit

Click documentation icon for measure details



Percent of Providers Meeting KSAs for General Surgery

Click documentation icon for measure details



Percent of Providers Meeting KSAs for Orthopedic Surgery

Click documentation icon for measure details



Part E: P4I Measures (2 of 17)

Better Health- Improve Well-Being

Health Related
Quality of Life

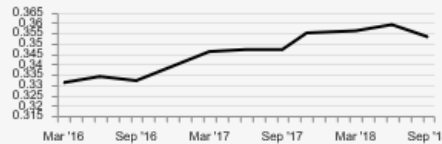
Current Data Date

Freq of Update

Annually

Obesity Prevalence in Adults

35.3 %



Current Data Date

Sep '18

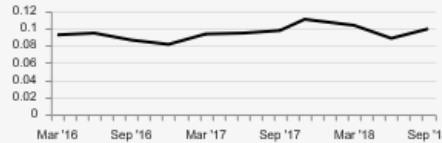
Freq of Update

Quarterly

Lower is better

Obesity Prevalence in Children

9.9 %



Current Data Date

Sep '18

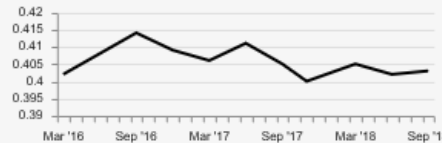
Freq of Update

Quarterly

Lower is better

Overweight Prevalence
in Adults

40.3 %



Current Data Date

Sep '18

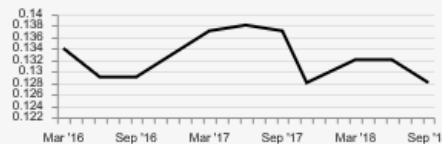
Freq of Update

Quarterly

Lower is better

Overweight Prevalence
in Children

12.8 %



Current Data Date

Sep '18

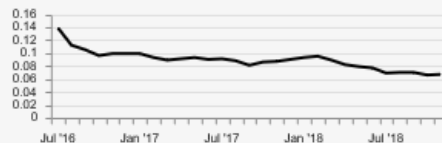
Freq of Update

Quarterly

Lower is better

Cessation Counseling
Amongst Tobacco Users

6.7 %



Current Data Date

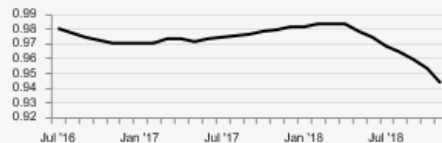
Nov '18

Freq of Update

Monthly

Tobacco Use Assessment

94.3 %



Current Data Date

Nov '18

Freq of Update

Monthly

Part E: P4I Measures (3 of 17)

Better Care- **Improve** Clinical Outcomes

Risk Adjusted Mortality
(All Cause)



Current Data Date

Freq of Update

Quarterly

Lower is better

Inpatient: Recommend
Hospital (Satisfaction)



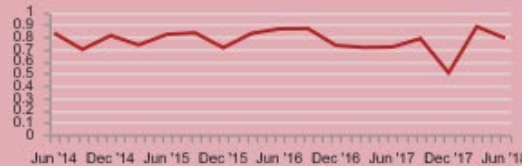
Current Data Date

Freq of Update

Quarterly

Outpatient Provider
Communication

78.83 %



Current Data Date

Jun '18

Freq of Update

Quarterly

Part E: P4I Measures (4 of 17)

Better Care- **Improve** Safety

Catheter-Associated

Urinary Tract Infections - SIR



Current Data Date

Freq of Update

Quarterly

Lower is better

Central Line-Associated
Bloodstream Infections - SIR

No data is currently available

WSS (Wrong Site Surgery)



Current Data Date

Freq of Update

Quarterly

Lower is better

URFO (Unintended
Retained Foreign Objects)



Current Data Date

Freq of Update

Quarterly

Lower is better

NSQIP (30 Day) All Case

Morbidity Index

[Click to view the report](#)

NSQIP (30 Day) All Case

Mortality Index

[Click to view the report](#)

Part E: P4I Measures (5 of 17)

Better Care- **Improve** Condition-based Quality Care

Diabetes A1c Testing
93.97 %



Current Data Date
Oct '18

Freq of Update
Monthly

Low Back Pain Imaging Studies
78.44 %



Current Data Date
Oct '18

Freq of Update
Monthly

Children with Pharyngitis
Appropriate Testing
100.00 %



Current Data Date
Oct '18

Freq of Update
Monthly

HEDIS Breast Cancer
Screening
68.93 %



Current Data Date
Oct '18

Freq of Update
Monthly

HEDIS Cervical Cancer
Screening
76.53 %



Current Data Date
Oct '18

Freq of Update
Monthly

HEDIS Colon Cancer
Screening
70.16 %



Current Data Date
Oct '18

Freq of Update
Monthly

Part E: P4I Measures (6 of 17)

7-Day Mental Health Follow-Up
69.84 %



Current Data Date
Oct '18

Freq of Update
Monthly

HEDIS All Cause Readmissions

No data is currently available

Well Child
86.30 %



Current Data Date
Oct '18

Freq of Update
Monthly

IQI #33 Primary Cesarean Section

No data is currently available

Postpartum Hemorrhage

No data is currently available

Unexpected Newborn Complication #716

No data is currently available

Part E: P4I Measures (7 of 17)

Better Care- **Improve** Comprehensive Primary Care

Days to Third Next Available
24 Hour Appointment

1.45



Current Data Date

Dec '18

Freq of Update

Monthly

Lower is better

Days to Third Next Available
Future Appointment

9.52



Current Data Date

Dec '18

Freq of Update

Monthly

Lower is better

Potentially Recapturable
PC Leakage to the Network

34.10 %



Current Data Date

Sep '18

Freq of Update

Monthly

Lower is better

PCM Continuity

42.22 %



Current Data Date

Dec '18

Freq of Update

Monthly

Part E: P4I Measures (8 of 17)

Better Care- Optimize & Standardize Access

Percent of Direct Care Enrollees
with Secure Messaging

51.38 %



Current Data Date
Dec '18

Freq of Update
Monthly

SM Response Time
One Business Day

71.43 %



Current Data Date
Dec '18

Freq of Update
Monthly

Satisfaction with
Getting Care When Needed

79.30 %



Current Data Date
Sep '18

Freq of Update
Quarterly

Specialty Care:
Referral Order to Book

5.28



Current Data Date
Oct '18

Freq of Update
Monthly

Lower is better

Specialty Care:
Booked to Actual Appt

11.14



Current Data Date
Oct '18

Freq of Update
Monthly

Lower is better

Part E: P4I Measures (9 of 17)

Ambulatory Specialty Care

Leakage
56.2 %



Current Data Date

Oct '18

Lower is better

Freq of Update

Monthly

Active Duty Days to Primary Care Appointments

0.66



Current Data Date

Dec '18

Lower is better

Freq of Update

Monthly

Active Duty Days to Specialty Care Appointments

8.57



Current Data Date

Dec '18

Lower is better

Freq of Update

Monthly

MEB Stage Timeliness

Click documentation icon for measure details



Part E: P4I Measures (10 of 17)

Better Care - **Improve** Regulatory Compliance

American Council for Graduate Medical Education (ACGME) Accreditation Status

Click documentation Icon for measure details



Accreditation for DoD Clinical Laboratories

Click documentation Icon for measure details



Joint Commission Accreditation

Click documentation Icon for measure details



Part E: P4I Measures (11 of 17)

Lower Cost - **Improve** Stewardship

Per Member Per Month
9.52 %

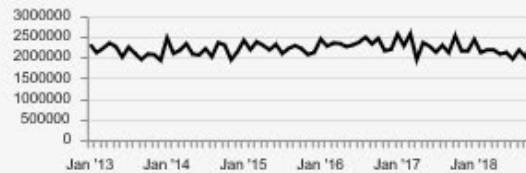


Current Data Date
Sep '18

Lower is better

Freq of Update
Monthly

Total Purchased Care Cost
N/A



Current Data Date
Oct '18

Lower is better

Freq of Update
Monthly

Private Sector Care Cost
per Prime Enrollee
13.37 %



Current Data Date
Sep '18

Lower is better

Freq of Update
Monthly

Total Empanelment
-0.0 %



Current Data Date
Nov '18

Lower is better

Freq of Update
Monthly

Pharmacy Percent Retail Spend
24.9 %



Current Data Date
Nov '18

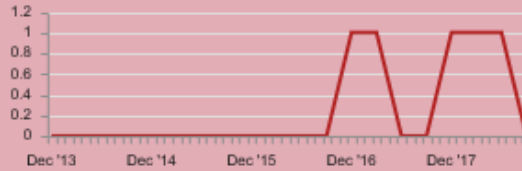
Lower is better

Freq of Update
Monthly

Part E: P4I Measures (12 of 17)

Active Duty Specialty Care
Provider Efficiency

0 %



Current Data Date

Sep '18

Freq of Update

Quarterly

Overall Occupancy Rate (US)

No data is currently available

ICU Occupancy Rate (US)

No data is currently available

Enterprise Support Activity (ESA) Net Benefit

Click documentation icon for measure details



Part E: P4I Measures (13 of 17)

MHS Dashboard - AF-C-436th MEDGRP-DOVER

All CI RMG TRN My
 Filter

Export

View as of

 Apply Clear

Layout

Go back to: [MHS](#) > [AMC](#)

∨	= decrease in current value from prior
∧	= increase in current value from prior
∩	= no change in current value from prior
Trend – the number of data periods corresponding to the performance trend direction	

Readiness- **Medically** Ready Force

Measure	Data As Of	Next Refresh	Red	Yellow	Green	Blue	AF-C-436th MEDGRP-DOVER	
IMR	-	4/2019	-	-	-	-	Current	Prior
							-	-
							Performance	Trend
							-	-
Deployment Limiting Med/Dent Condition	-	4/2019	-	-	-	-	Current	Prior
							-	-
							Performance	Trend
							-	-
Percent Meeting KSAs General Surgery	-	2/2019	-	-	-	-	Current	Prior
							-	-
							Performance	Trend
							-	-
Percent Meeting KSAs Orthopedic Surgery	-	2/2019	-	-	-	-	Current	Prior
							-	-
							Performance	Trend
							-	-

Part E: P4I Measures (14 of 17)

Better Health- **Improve** Well-Being

Measure	Data As Of	Next Refresh	Red	Yellow	Green	Blue	AF-C-436th MEDGRP-DOVER	Current	Prior
HRQOL	-	9/2019	-	-	-	-	Performance	-	-
Obesity in Adults Lower is better	9/2018	3/2019	-	-	-	-	Performance	35.3 %	35.9 %
Obesity in Children Lower is better	9/2018	3/2019	-	-	-	-	Performance	9.9 %	8.8 %
Overweight in Adults Lower is better	9/2018	3/2019	-	-	-	-	Performance	40.3 %	40.2 %
Overweight in Children Lower is better	9/2018	3/2019	-	-	-	-	Performance	12.8 %	13.2 %
Tobacco Counseling	11/2018	2/2019	-	-	-	-	Performance	6.7 %	6.6 %
Tobacco Use Assessment	11/2018	2/2019	-	-	-	-	Performance	94.3 %	95.3 %

Better Care- **Improve** Clinical Outcomes

Measure	Data As Of	Next Refresh	Red	Yellow	Green	Blue	AF-C-436th MEDGRP-DOVER	Current	Prior
Risk Adjusted Mortality Lower is better	-	2/2019	-	-	-	-	Performance	-	-
Recommend Hospital	-	2/2019	-	-	-	-	Performance	-	-
Provider Communication	6/2018	2/2019	< 85%	>= 85%	>= 88%	>= 91%	Performance	78.83 %	88.30 %

Better Care- **Improve** Safety

Measure	Data As Of	Next Refresh	Red	Yellow	Green	Blue	AF-C-436th MEDGRP-DOVER	Current	Prior
CAUTI - SIR Lower is better	-	4/2019	-	-	-	-	Performance	-	-
CLABSI - SIR Lower is better	-	4/2019	-	-	-	-	Performance	-	-
WSS Lower is better	-	4/2019	-	-	-	-	Performance	-	-
URFO Lower is better	-	4/2019	-	-	-	-	Performance	-	-

Part E: P4I Measures (15 of 17)

Better Care- Improve Condition-based Quality Care

Measure	Data As Of	Next Refresh	Red	Yellow	Green	Blue	AF-C-436th MEDGRP-DOVER								
Diabetes A1c Testing	10/2018	2/2019	< 90.54%	>= 90.54%	>= 93.37%	>= 94.89%	<table border="1"> <tr> <td>Current ^a</td> <td>Prior ^b</td> </tr> <tr> <td>93.97 %</td> <td>92.12 %</td> </tr> <tr> <td>Performance</td> <td>Trend</td> </tr> <tr> <td>∧</td> <td>1</td> </tr> </table>	Current ^a	Prior ^b	93.97 %	92.12 %	Performance	Trend	∧	1
Current ^a	Prior ^b														
93.97 %	92.12 %														
Performance	Trend														
∧	1														
Low Back Pain	10/2018	2/2019	< 73.91%	>= 73.91%	>= 78.57%	>= 82.98%	<table border="1"> <tr> <td>Current ^b</td> <td>Prior ^c</td> </tr> <tr> <td>78.44 %</td> <td>73.01 %</td> </tr> <tr> <td>Performance</td> <td>Trend</td> </tr> <tr> <td>∧</td> <td>4</td> </tr> </table>	Current ^b	Prior ^c	78.44 %	73.01 %	Performance	Trend	∧	4
Current ^b	Prior ^c														
78.44 %	73.01 %														
Performance	Trend														
∧	4														
Children w/Pharyngitis	10/2018	2/2019	< 86.86%	>= 86.86%	>= 90.61%	>= 94.12%	<table border="1"> <tr> <td>Current ^b</td> <td>Prior ^d</td> </tr> <tr> <td>100.00 %</td> <td>100.00 %</td> </tr> <tr> <td>Performance</td> <td>Trend</td> </tr> <tr> <td>></td> <td>6</td> </tr> </table>	Current ^b	Prior ^d	100.00 %	100.00 %	Performance	Trend	>	6
Current ^b	Prior ^d														
100.00 %	100.00 %														
Performance	Trend														
>	6														
Breast Cancer Screening	10/2018	2/2019	< 73.55%	>= 73.55%	>= 77.49%	>= 81.04%	<table border="1"> <tr> <td>Current ^a</td> <td>Prior ^e</td> </tr> <tr> <td>68.93 %</td> <td>69.47 %</td> </tr> <tr> <td>Performance</td> <td>Trend</td> </tr> <tr> <td>∨</td> <td>6</td> </tr> </table>	Current ^a	Prior ^e	68.93 %	69.47 %	Performance	Trend	∨	6
Current ^a	Prior ^e														
68.93 %	69.47 %														
Performance	Trend														
∨	6														
Cervical Cancer Screening	10/2018	2/2019	< 75.91%	>= 75.91%	>= 79.02%	>= 82.48%	<table border="1"> <tr> <td>Current ^b</td> <td>Prior ^f</td> </tr> <tr> <td>76.53 %</td> <td>75.72 %</td> </tr> <tr> <td>Performance</td> <td>Trend</td> </tr> <tr> <td>∧</td> <td>1</td> </tr> </table>	Current ^b	Prior ^f	76.53 %	75.72 %	Performance	Trend	∧	1
Current ^b	Prior ^f														
76.53 %	75.72 %														
Performance	Trend														
∧	1														
Colon Cancer Screening	10/2018	2/2019	< 63.34%	>= 63.34%	>= 70.21%	>= 74.7%	<table border="1"> <tr> <td>Current ^b</td> <td>Prior ^g</td> </tr> <tr> <td>70.16 %</td> <td>70.36 %</td> </tr> <tr> <td>Performance</td> <td>Trend</td> </tr> <tr> <td>∨</td> <td>3</td> </tr> </table>	Current ^b	Prior ^g	70.16 %	70.36 %	Performance	Trend	∨	3
Current ^b	Prior ^g														
70.16 %	70.36 %														
Performance	Trend														
∨	3														

7-Day Mental Health	10/2018	2/2019	< 51.72%	>= 51.72%	>= 62.9%	>= 69.68%	<table border="1"> <tr> <td>Current ^a</td> <td>Prior ^h</td> </tr> <tr> <td>69.84 %</td> <td>73.53 %</td> </tr> <tr> <td>Performance</td> <td>Trend</td> </tr> <tr> <td>∨</td> <td>1</td> </tr> </table>	Current ^a	Prior ^h	69.84 %	73.53 %	Performance	Trend	∨	1
Current ^a	Prior ^h														
69.84 %	73.53 %														
Performance	Trend														
∨	1														
All Cause Readmissions Lower is better	-	2/2019	-	-	-	-	<table border="1"> <tr> <td>Current</td> <td>Prior</td> </tr> <tr> <td>-</td> <td>-</td> </tr> <tr> <td>Performance</td> <td>Trend</td> </tr> <tr> <td>-</td> <td>-</td> </tr> </table>	Current	Prior	-	-	Performance	Trend	-	-
Current	Prior														
-	-														
Performance	Trend														
-	-														
Well Child	10/2018	2/2019	< 81.9%	>= 81.9%	>= 86.59%	>= 89.81%	<table border="1"> <tr> <td>Current ^b</td> <td>Prior ⁱ</td> </tr> <tr> <td>86.30 %</td> <td>88.89 %</td> </tr> <tr> <td>Performance</td> <td>Trend</td> </tr> <tr> <td>∨</td> <td>1</td> </tr> </table>	Current ^b	Prior ⁱ	86.30 %	88.89 %	Performance	Trend	∨	1
Current ^b	Prior ⁱ														
86.30 %	88.89 %														
Performance	Trend														
∨	1														
IQI #33 Primary Cesarean Section Lower is better	-	4/2019	-	-	-	-	<table border="1"> <tr> <td>Current</td> <td>Prior</td> </tr> <tr> <td>-</td> <td>-</td> </tr> <tr> <td>Performance</td> <td>Trend</td> </tr> <tr> <td>-</td> <td>-</td> </tr> </table>	Current	Prior	-	-	Performance	Trend	-	-
Current	Prior														
-	-														
Performance	Trend														
-	-														
Postpartum Hemorrhage Lower is better	-	4/2019	-	-	-	-	<table border="1"> <tr> <td>Current</td> <td>Prior</td> </tr> <tr> <td>-</td> <td>-</td> </tr> <tr> <td>Performance</td> <td>Trend</td> </tr> <tr> <td>-</td> <td>-</td> </tr> </table>	Current	Prior	-	-	Performance	Trend	-	-
Current	Prior														
-	-														
Performance	Trend														
-	-														
Unexpected Newborn Complication #716 Lower is better	-	4/2019	-	-	-	-	<table border="1"> <tr> <td>Current</td> <td>Prior</td> </tr> <tr> <td>-</td> <td>-</td> </tr> <tr> <td>Performance</td> <td>Trend</td> </tr> <tr> <td>-</td> <td>-</td> </tr> </table>	Current	Prior	-	-	Performance	Trend	-	-
Current	Prior														
-	-														
Performance	Trend														
-	-														

Part E: P4I Measures (16 of 17)

Better Care- Improve Comprehensive Primary Care

Measure	Data As Of	Next Refresh	Red	Yellow	Green	Blue	AF-C-436th MEDGRP-DOVER
24 Hour Appts Lower is better	12/2018	2/2019	>1.50 Days	<=1.5 Days	<=1 Days	<=0.83 Days	Current ^h 1.45 Prior ^h 1.70 Performance Trend ∇ 1
Future Appts Lower is better	12/2018	2/2019	>8 Days	<=8 Days	<=7 Days	<=2.3 Days	Current ^h 9.52 Prior ^h 11.43 Performance Trend ∇ 1
PC Leakage (Recap) Lower is better	9/2018	2/2019	>= 12.00%	< 12.00%	<= 8.00%	<= 3.00%	Current ^h 34.10 % Prior ^h 31.97 % Performance Trend ∇ 1
PCM Continuity	12/2018	2/2019	< 55%	>= 55%	>= 65%	>= 75%	Current ^h 42.22 % Prior ^h 39.18 % Performance Trend ∇ 1

Better Care- Optimize & Standardize Access

Measure	Data As Of	Next Refresh	Red	Yellow	Green	Blue	AF-C-436th MEDGRP-DOVER
SM Enrollment	12/2018	2/2019	<37%	>=37%	>=50%	>=75%	Current ^g 51.38 % Prior ^g 49.32 % Performance Trend ∇ 1
SM Response Time 1 Day	12/2018	2/2019	<70%	>=70%	>=80%	>=87%	Current ^g 71.43 % Prior ^g 89.91 % Performance Trend ∇ 1

Getting Care When Needed	9/2018	2/2019	<81.20%	>=81.20%	>=84.40%	>=87.20%	Current ^h 79.30 % Prior ^h 76.47 % Performance Trend ∇ 1
Specialty: Referral to Book Lower is better	10/2018	2/2019	>4 Days	<=4 Days	<=3 Days	<=1 Day	Current ^h 5.28 Prior ^h 3.56 Performance Trend ∇ 2
Specialty: Booked to Appt Lower is better	10/2018	2/2019	>24 Days	<=24 Days	<=15 Days	<=7.5 Days	Current ^g 11.14 Prior ^g 12.44 Performance Trend ∇ 1
Amb Specialty Care Leakage Lower is better	10/2018	2/2019	> 23.7%	<= 23.7%	<= 10.7%	<= 2.0%	Current ^h 56.2 % Prior ^h 73.3 % Performance Trend ∇ 1
AD: Days To Primary Care Lower is better	12/2018	2/2019	>1.5 Days	<=1.5 Days	<=1 Days	<=0.83 Days	Current ^h 0.66 Prior ^h 0.64 Performance Trend ∇ 1
AD: Days To Specialty Care Lower is better	12/2018	2/2019	>24 Days	<=24 Days	<=15 Days	<=7.5 Days	Current ^g 8.57 Prior ^g 16.31 Performance Trend ∇ 1
MEB Stage Timeliness	-	2/2019	-	-	-	-	Current ^h - Prior ^h - Performance Trend -

Part E: P4I Measures (17 of 17)

Better Care - Improve Regulatory Compliance

Measure	Data As Of	Next Refresh	Red	Yellow	Green	Blue	AF-C-436th MEDGRP-DOVER	Current ^a	Prior ^b
ACGME Accreditation Status	-	9/2019	-	-	-	-	Performance	-	-
Accreditation for DoD Clinical Laboratories	-	1/2019	-	-	-	-	Performance	-	-
Joint Commission Accreditation	-	1/2019	-	-	-	-	Performance	-	-

Lower Cost - Improve Stewardship

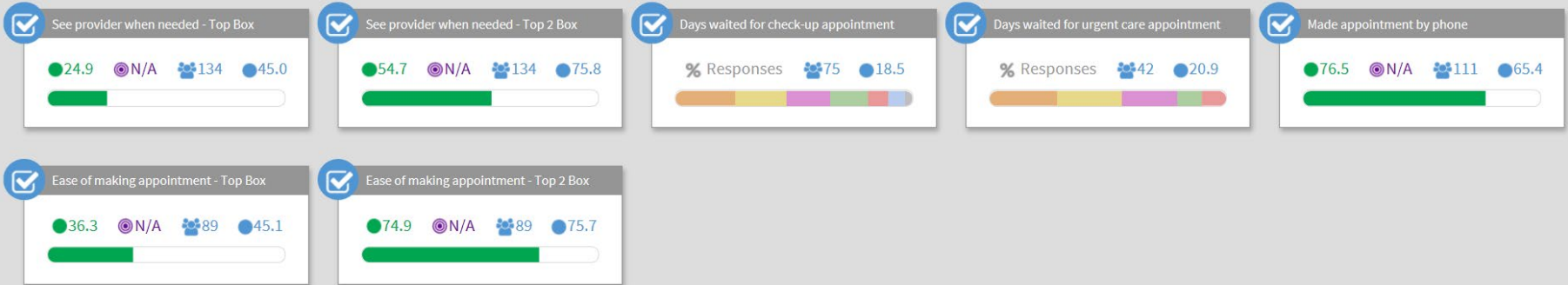
Measure	Data As Of	Next Refresh	Red	Yellow	Green	Blue	AF-C-436th MEDGRP-DOVER	Current ^a	Prior ^b
PMPM Lower is better	9/2018	5/2019	> 3.20%	-	<= 3.20%	<= 0.00%	Performance	9.52 %	9.99 %
Total Purchased Care Cost Lower is better	10/2018	3/2019	> FY Target	-	<= FY Target	<= Next FY Target	Performance	\$2.37M	\$1.99M
Private Sector Care Cost Lower is better	9/2018	5/2019	> 3.20%	-	<= 3.20%	<= 0.00%	Performance	13.37 %	14.27 %

Total Empanelment	11/2018	2/2019	< 0.00%	-	< 5.00% but >= 0.00%	>= 5.00%	Performance	-0.0 %	0.0 %
Pharmacy Percent Retail Lower is better	11/2018	2/2019	> 30%	-	<= 30%	<=25%	Performance	24.9 %	24.9 %
AD: Spec Prov Efficiency	9/2018	4/2019	<61%	>=61%	<79%	>=79%	Performance	0	100 %
Overall Occ Rate (US)	-	2/2019	-	-	-	-	Performance	-	-
ICU Occ Rate (US)	-	2/2019	-	-	-	-	Performance	-	-
ESA Benefit	-	3/2019	-	-	-	-	Performance	-	-

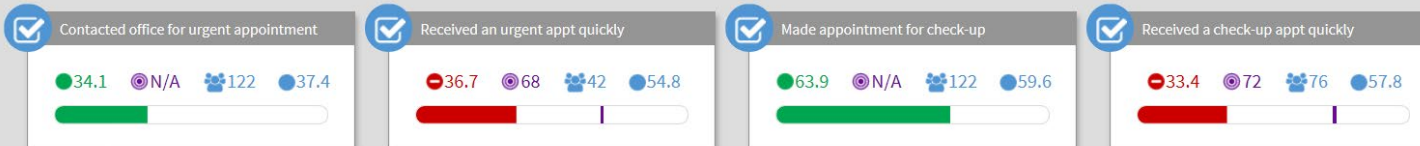
Part F: JOES-C

AF-C-436 MEDGROUP Dover Direct Care

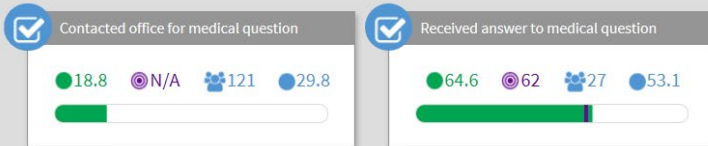
Access to Provider



Appointment



Contact Office



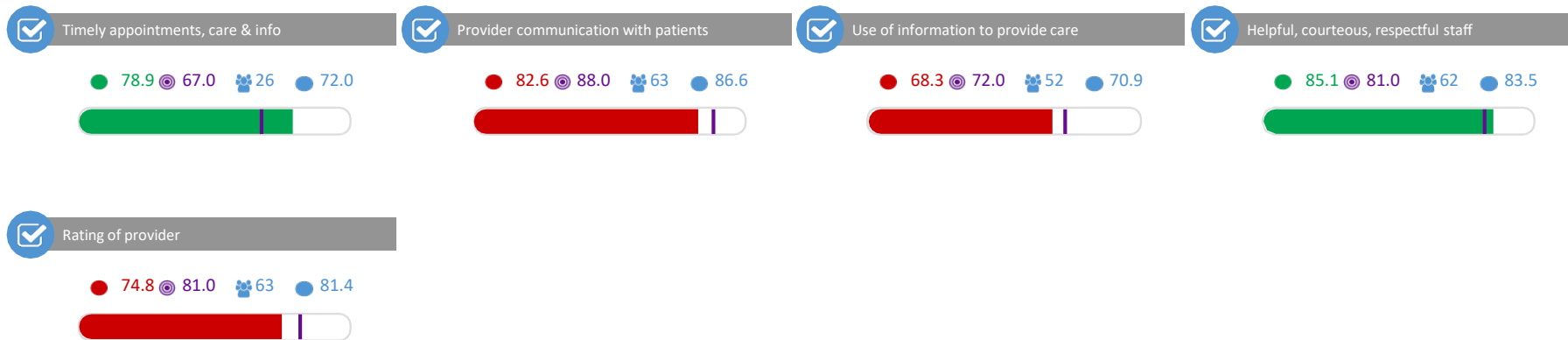
Survey Results Report

5/6/2019

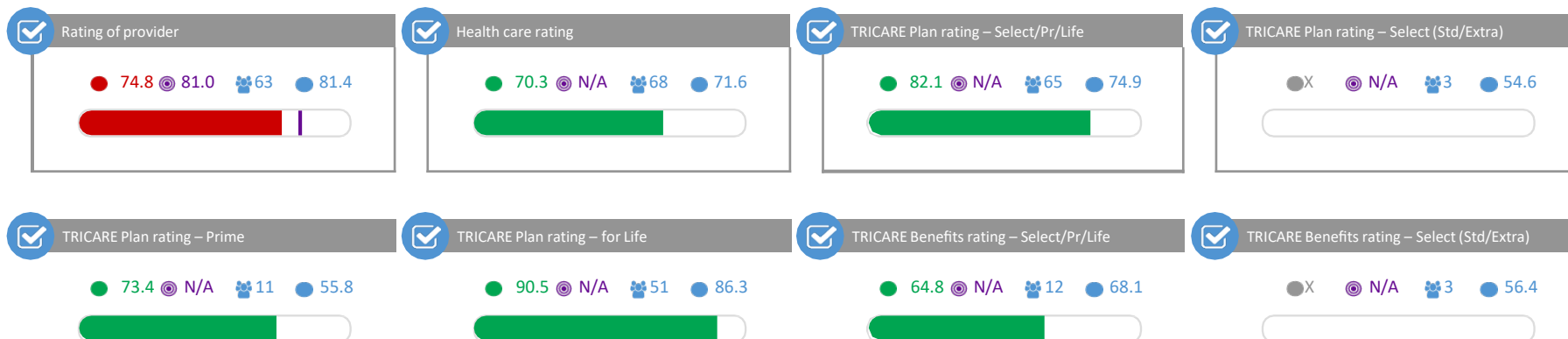
Purchased Care
PSA: DOVER AFB
3 Month - December 2018
50% Percentile CAHPS

● : Score ● : Benchmark 🗲 : # Respondents

CAHPS Composites: Composites

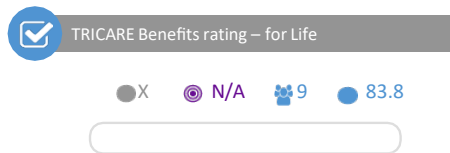


Overall Ratings: Overall Ratings

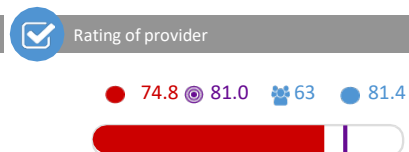
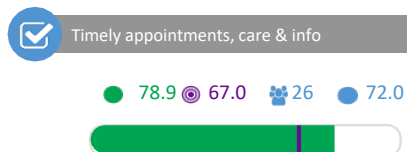


● : Score ● : Benchmark 🗲 : # Respondents

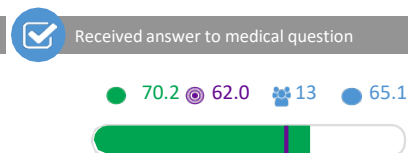
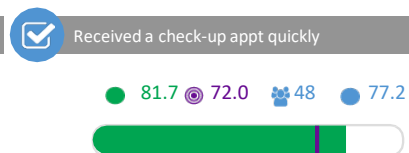
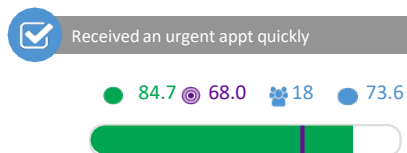
Overall Ratings: Overall Ratings (cont)



Appointments, Care and Information: Composite

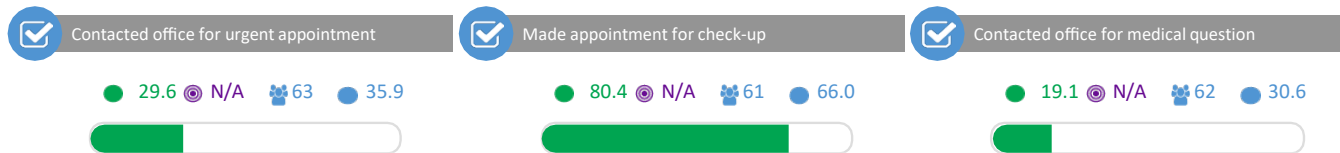


Appointments, Care and Information: Composite Criteria

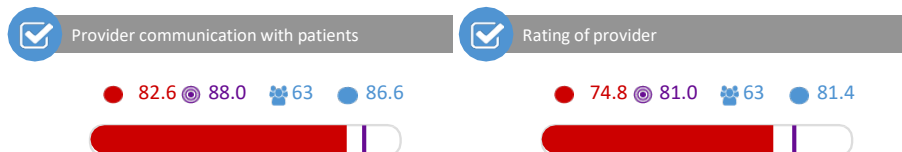


● : Score ● : Benchmark 🗨️ : # Respondents

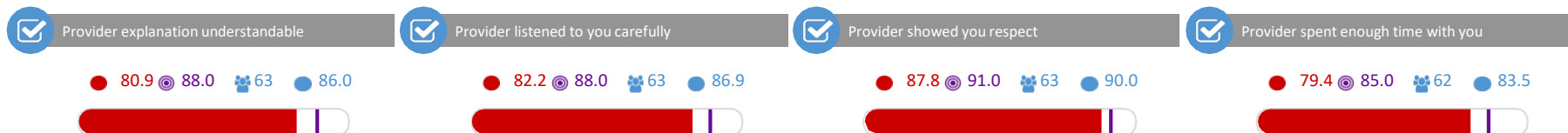
Appointments, Care and Information: Composite Filters



Communication: Composite

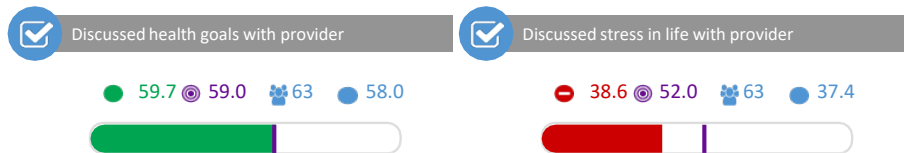


Communication: Composite Criteria

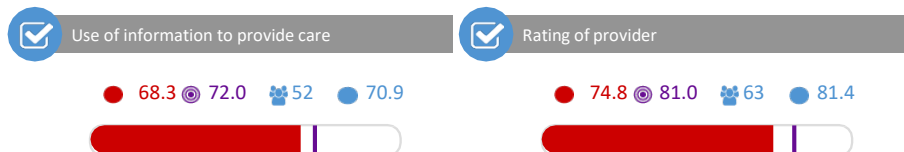


● : Score ● : Benchmark 🗲 : # Respondents

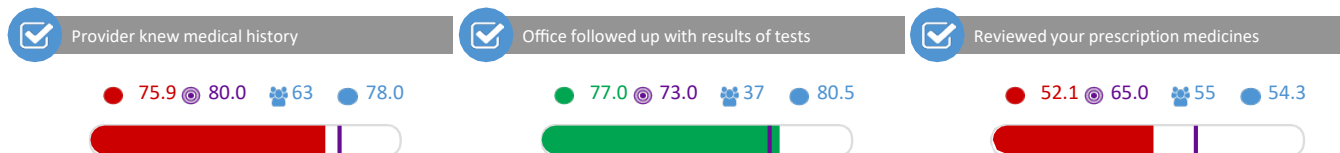
Communication: Comprehensiveness of Care



Use of Information: Composite

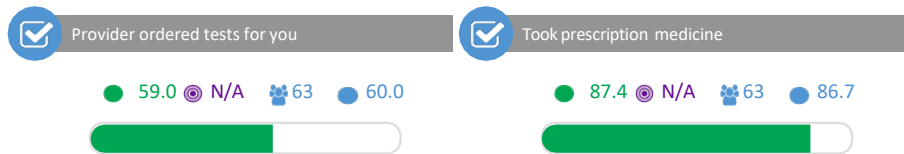


Use of Information: Composite Criteria

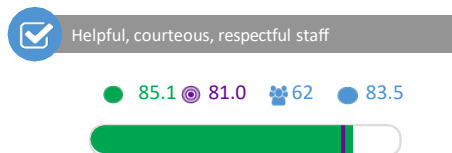


● : Score ● : Benchmark 🗲 : # Respondents

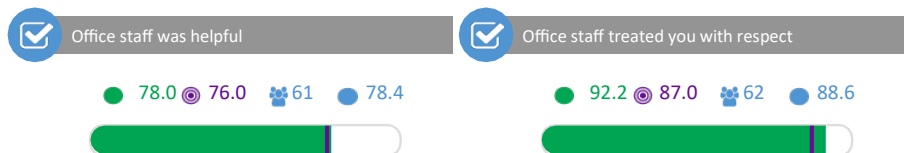
Use of Information: Composite Filters



Staff: Composite

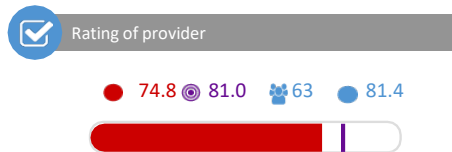


Staff: Composite Criteria

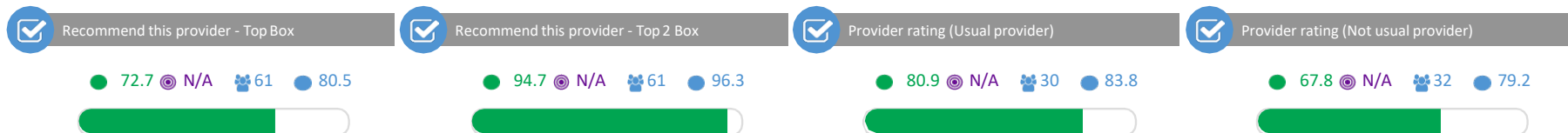


● : Score ● : Benchmark 🗲 : # Respondents

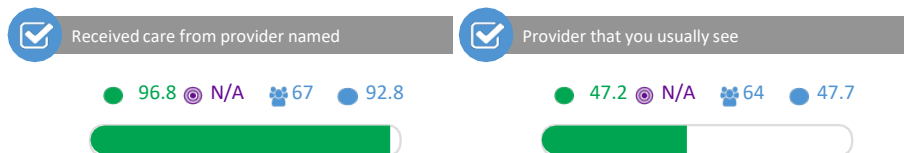
Rating of Provider: Composite



Rating of Provider: Recommend Provider

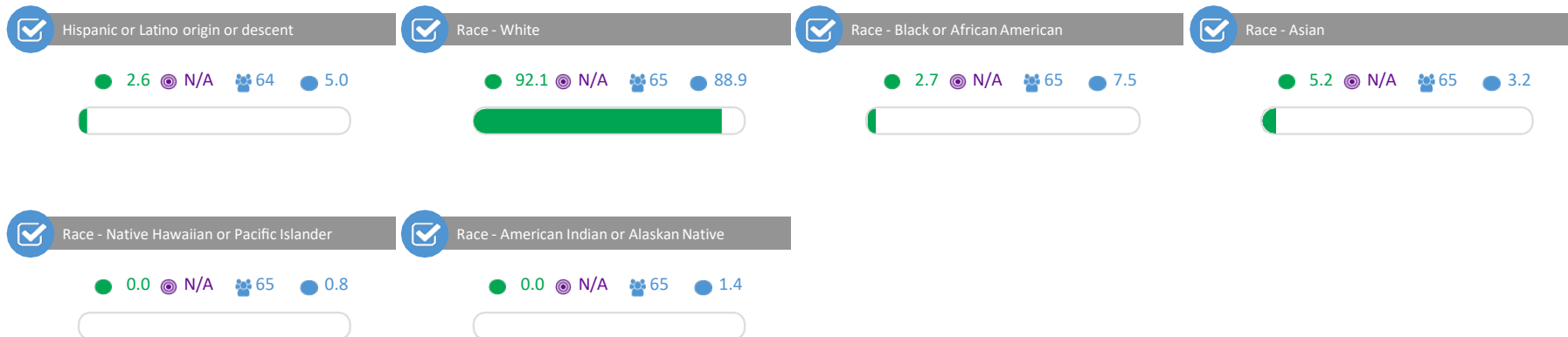


Demographic: Care From Provider

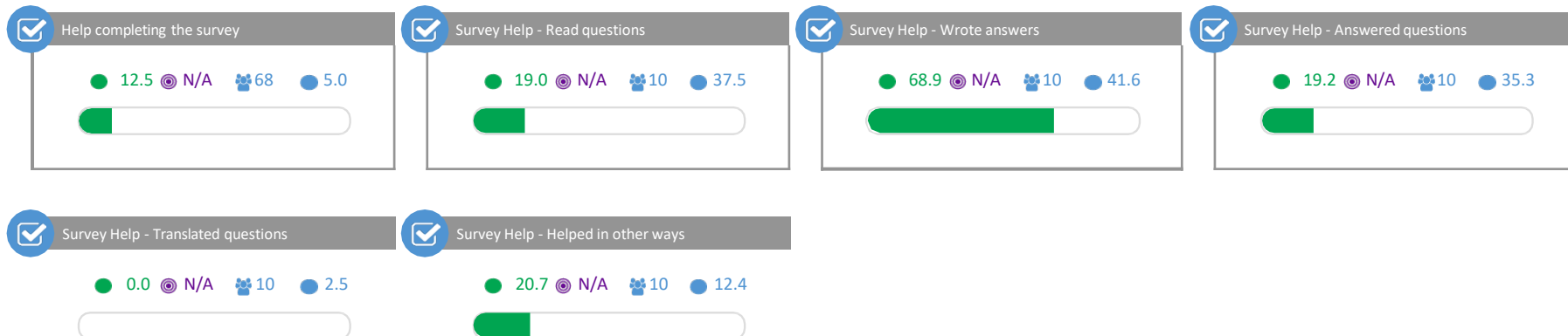


● : Score ● : Benchmark 🗨️ : # Respondents

Demographic: Patient Information

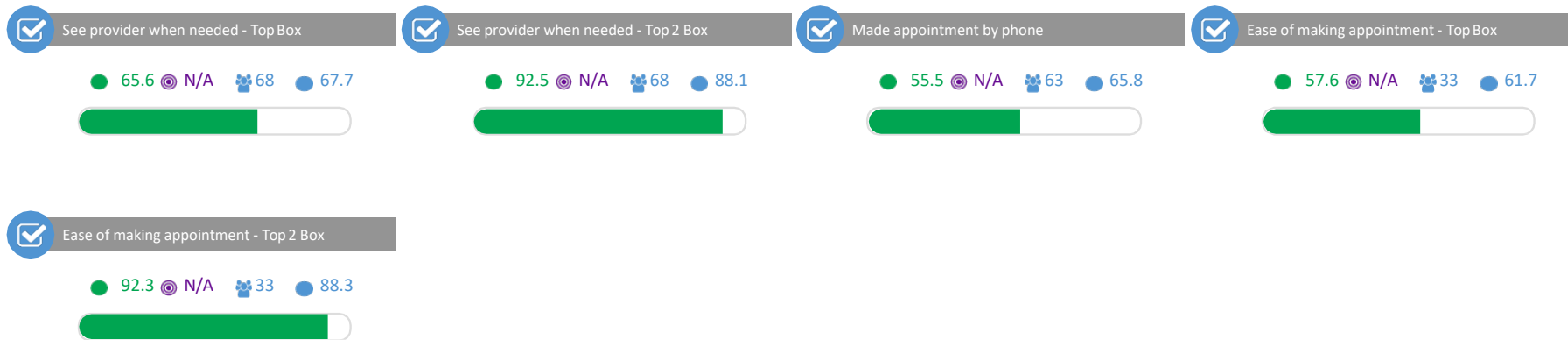


Demographic: Survey Help

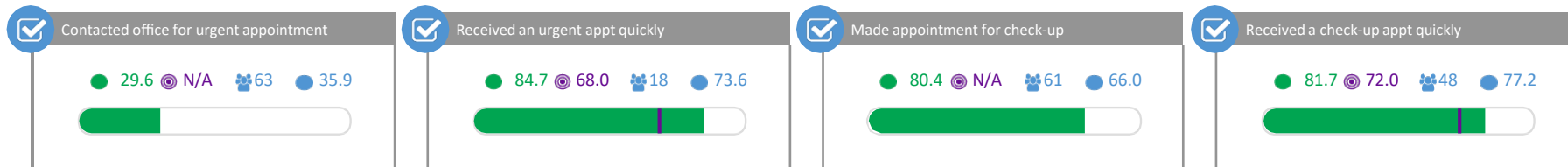


● : Score ● : Benchmark 🗨️ : # Respondents

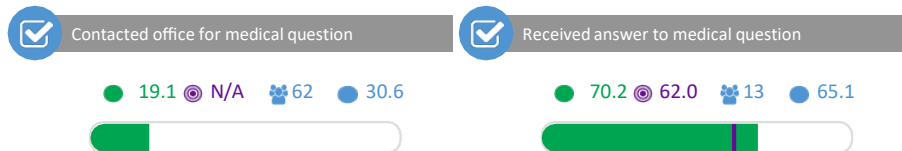
Access: Access to Provider



Access: Appointment



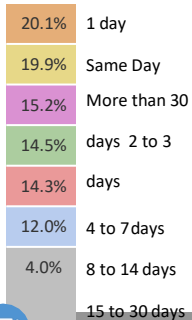
Access: Contact Office



Survey Demographics

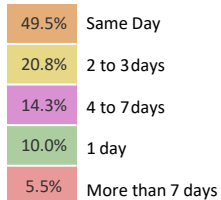
Days waited for check-up appointment

45



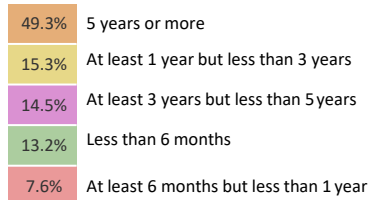
Days waited for urgent care appointment

17



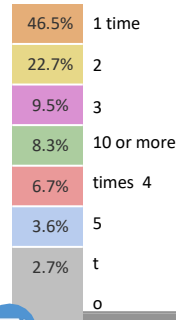
Length of time seeing provider

63



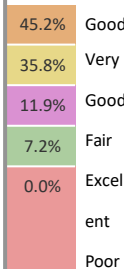
How many times did you visit provider

65



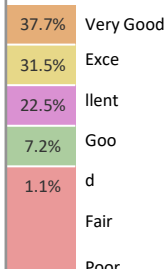
Overall health rating

68



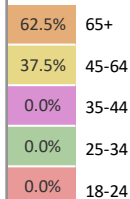
Mental or emotional health rating

67



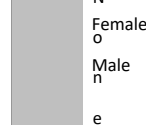
Age

68



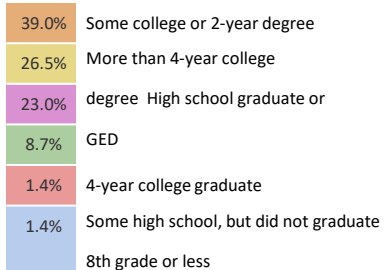
Gender

68



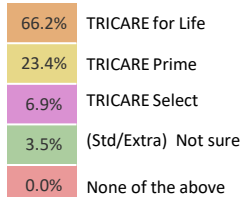
Highest grade or level of school

64



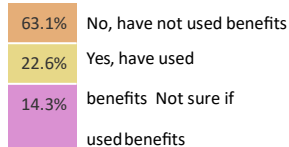
Enrolled in TRICARE

68



Used TRICARE Select (Std/Extra) benefits

64



Part G: Base Mission Brief

Col Joel Safranek
Commander, 436th Airlift Wing

CMSgt Anthony Green
Command Chief, 436th Airlift Wing

Wing Mission Brief



Part G: Base Mission Brief



DOVER AFB HISTORY

- March, 1941 - Municipal Airport, Dover Airdrome
- December, 1941 - U.S. Army Air Corps Airfield
- Observation (Anti-sub), Bombers, Fighter Training
- 1952 - Air Transport Wing
- 1971 - C-5As arrive
- 2007 - C-17s arrive



Part G: Base Mission Brief



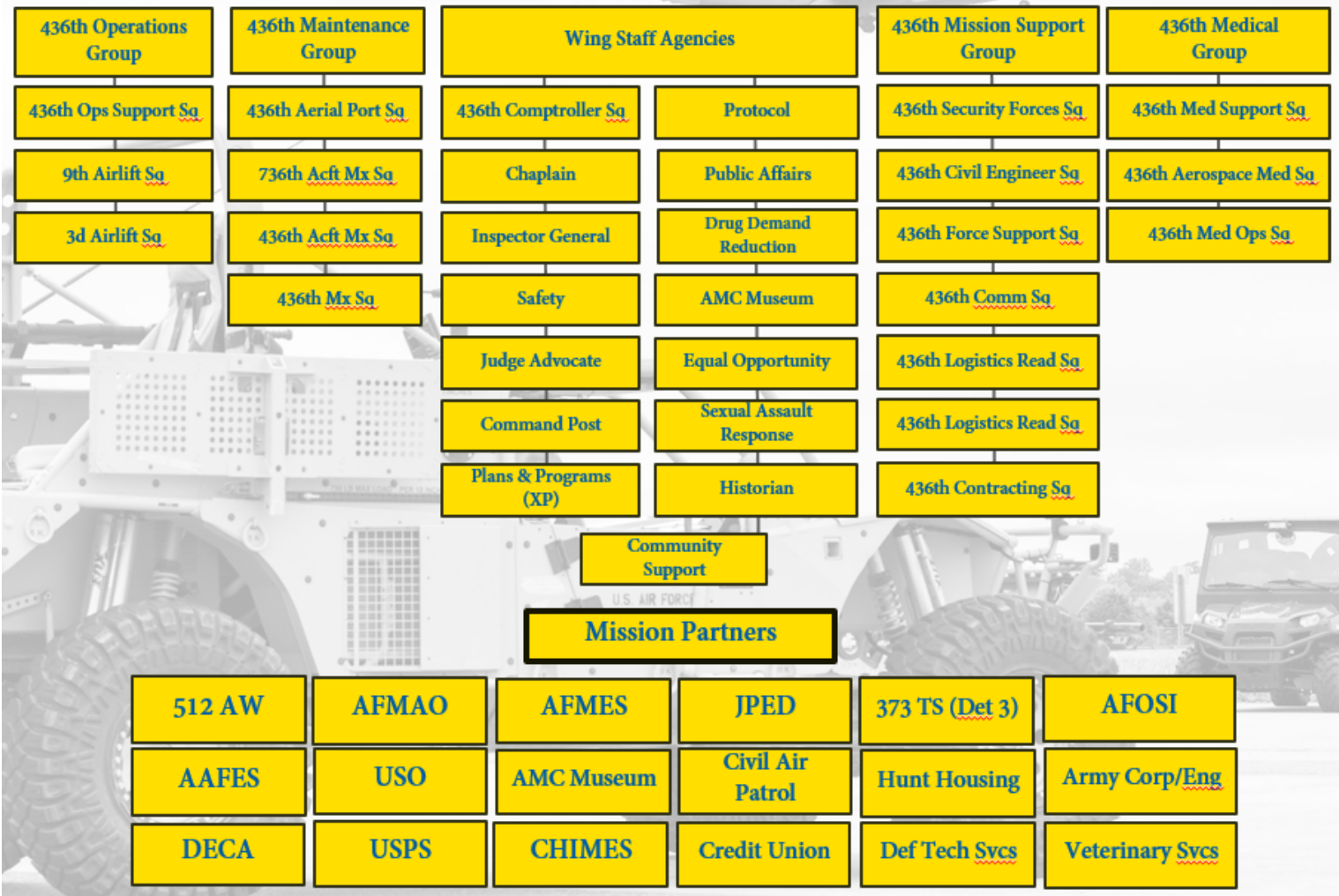
436TH AIRLIFT WING



Part G: Base Mission Brief



436th Airlift Wing



Part G: Base Mission Brief



MISSION:

*Provide Rapid Global Airlift,
Combat-Ready Airmen,
and Unrivaled Installation Support*

VISION:

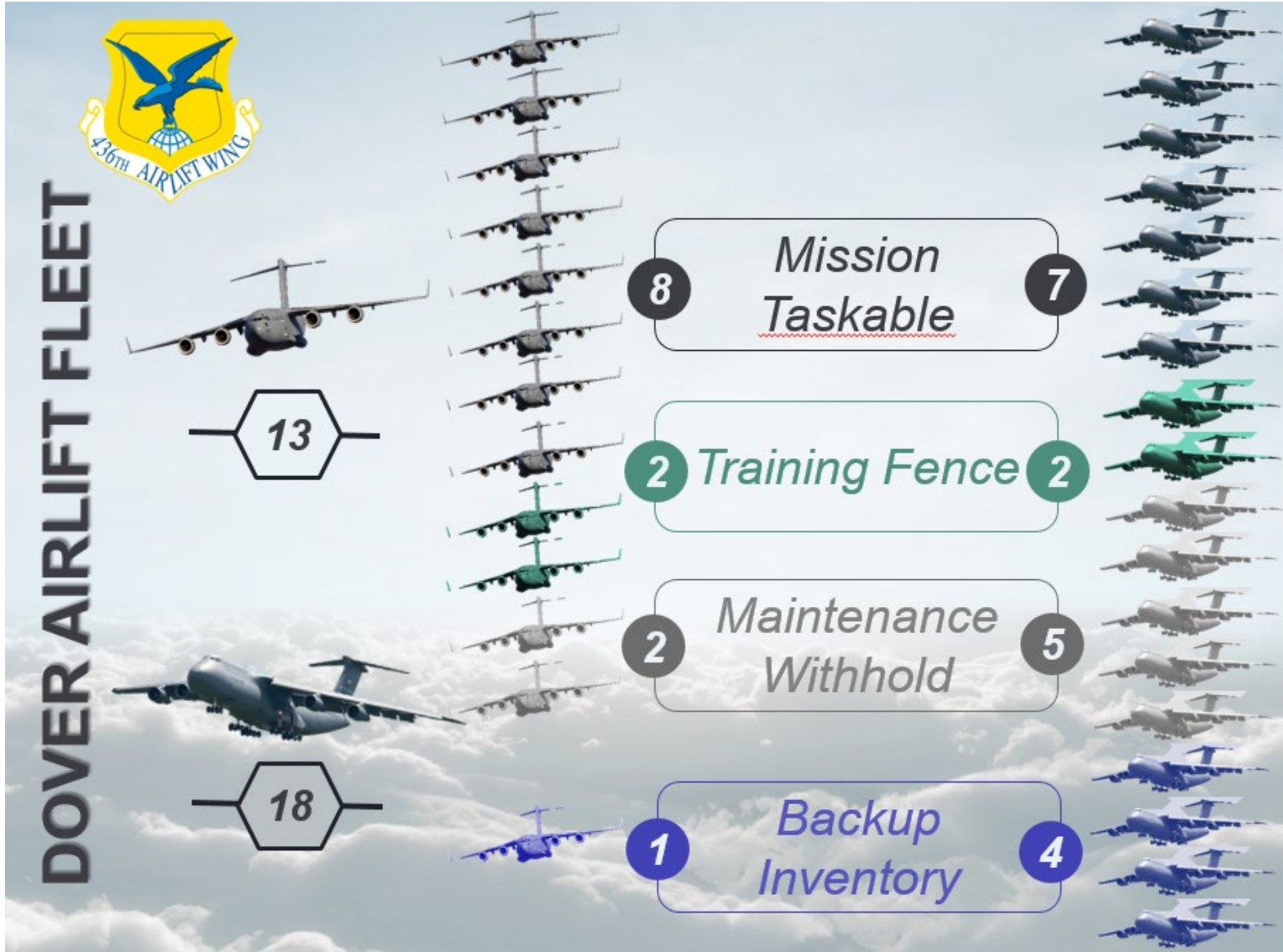
World's Premier Airlift Wing

PRIORITIES:

*Execute Wing's Global Airlift Mission
Prepare Airmen for Contested Environments
Provide World-Class Installation Support
Develop Airmen and Care for Families
Enhance Partnerships Through Trust*

D e l i v e r E x c e l l e n c e !

Part G: Base Mission Brief



Part G: Base Mission Brief



DOVER UNIQUE

- Home of The AMC Museum
- POTUS Airlift Base of Choice
- Only Active Duty Base in DE
- Military Working Dog APOD
- Volunteers (USO, Pharmacy, Museum)
- AF's Only C-5M Major Isochronal Insp. Base
- DoD's Largest Aerial Port – 85% CRAF
- DoD's Largest FMS Port
- Fisher House – Families Attending DTs
- Port Mortuary



Part G: Base Mission Brief

FORCE STRENGTH

Active Duty	Reserves	Civilians
-------------	----------	-----------

3,382	1,523	1,063
-------	-------	-------

Total Force

5,968

Dependents

4,114

All Dover AFB

10,082



Part G: Base Mission Brief



BASE FACTS

- \$11B in Assets
- 3,172 Acres
- 550 Facilities
- 543 Dorm Rooms
- 982 Privatized Homes

Part G: Base Mission Brief

STATUS OF CARE

- Robust Outpatient Clinic
- Family Practice
- Pediatrics
- Pharmacy
- Flight Medicine



Part G: Base Mission Brief



Hydrant Fuel
ECD Summer 2019
75% < Servicing Time

On Base School
Solicitation Phase
Est. Mar '19 Contr Awd

Hangar
Authority to Advertise
30 Lost Mx Days/Year

Dormitory
Target FY21-25 MILCON
AMC's #5 MILCON

Part G: Base Mission Brief

MISSION PARTNERS



Part G: Base Mission Brief



512 AIRLIFT WING

The Liberty Wing consists of operations, maintenance and support groups, a medical squadron, and 14 units

- 600 Delawareans
- 1,050 travel from 33 states
- 640 hotel rooms used per UTA



Part G: Base Mission Brief

ARMED FORCES MEDICAL EXAMINER SYSTEM (AFMES)

Investigate deaths, Identify the fallen, Improve readiness

- Only Federal Medical Examiners
- Division of Forensic Toxicology
- Department of Defense DNA Registry



Part G: Base Mission Brief

AIR FORCE MORTUARY AFFAIRS OPERATION (AFMAO)

- Returns & Prepares the Nation's Fallen
- Includes Media & Family Support
- 60 Military, 32 Civilians



Part G: Base Mission Brief

JOINT PERSONAL EFFECTS DEPOT (JPED)

Receives, safeguards, inventories, and processes the personal effects of deceased and missing DoD personnel for final disposition to the person eligible to receive effects

Part G: Base Mission Brief



Part G: Base Mission Brief

**WELCOME
TO DOVER...**



Part H: MTF Mission Brief



436th Medical Group Welcomes



Col Mullins, Col Merchant & the 703 Working Group Team



Col Patricia D. Fowler
Commander, 436th Medical Group

CMSgt Erica M. Hammond
Superintendent, 436th Medical Group



DOVER





300
436 Medical Group



436th Medical Group "Eagle Medics"



*Photo
unavailable*

**MSgt Mary Robey
First Sergeant**



**Col Patricia Fowler
Group Commander**



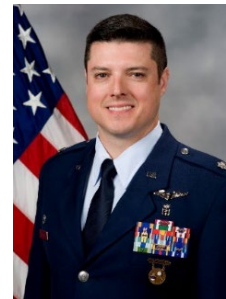
**CMSgt Erica Hammond
Group Superintendent**



**Lt Col Lisa Palmer
MDOS Commander**



**Lt Col Christopher Gonzales
MDSS Commander**



**Lt Col Paul Deflorio
AMDS Commander**



**Lt Col Christopher Segura
Chief of Medical Staff**



DOVER





436th Medical Group



Mission:

Provide Expeditionary medics and deliver Trusted Care to advance Rapid Global Mobility

Vision:

Premier Medical Experience – earning trust, every patient, everyday, everywhere



DOVER





Annual Snapshot

241 Personnel Assigned (as of 04 Mar 19)

Military	128
Civilians	43
Contractors	30

Annual Budget \$13.2 Million

Training Programs 3 Civilian TAA

Annual Workload	CY17	CY18
Outpatient Visits	47,665	49,826
Dental DERT Support	103 exams	12 exams
Prescriptions Filled	175,503	177,347
Laboratory Tests	108,463	115,792
Radiologic Procedures	2300	2,079
Radiology AFMES Support	700 hrs	537 hrs
Immunizations	15,459	15,546





Weekly Snapshot



Primary Care Appointments: 423 avg
Primary Care Walk-Ins: 46 avg
Primary Care Telephone Consults: 953 avg
Primary Care Referrals: 15 avg

Specialty Care Appointments: 356 avg
Specialty Care Walk-Ins: 38 avg
Specialty Care Telephone Consults: 109 avg
Specialty Care Referrals: 341 avg

Prescriptions Filled: 3,800

Telephone Calls (appt line): 1,173 avg

Enrollees: 11,230

Eligible: 33,056



DOVER





Air Force Medical Home



- **2 Family Health Teams**
- **1 Pediatric Team**
- **1 Flight Medicine Team**
- **Dover RESET**
 - **Team Hercules: 13 February 2019**
 - **Team Phoenix: April 2019**



DOVER





AFMH Neighborhood Partners



1. Bayhealth Medical Center, Dover
2. Bayhealth Medical Center, Milford
3. Dover Behavioral Health
4. Eden Hill and MedExpress Acute Care Clinics
5. Beebe Medical Center
6. Children's Hospital of Philadelphia
7. Christiana Care Health Services
8. Nemours/Al Dupont
9. VAMC – Wilmington
10. Wilmington Hospital
11. Peninsula Regional Medical Center
12. National Capital Region



DOVER





Challenges



- **DHA Guidance Implementation**
- **Readiness Skills/Capabilities**
- **Manning Gaps/Skill Mismatches (AD/GS)**
- **Civilian Personnel Hiring Process**
- **Specialty Care within the State of Delaware**
- **Referral Report Timeliness (Downtown)**
- **IT Reliability/Stability**
- **BOMC Sustainment**





Successes (Mission)



- Support to AFMAO/AFMES
- Trusted Care Journey
- Strong Mission Partners
- Community Support
- Patient Satisfaction





Successes (People)



- **2018 GEICO Military Service Award for Drug and Alcohol Abuse Prevention**
 - SSgt Meagan Hosack
- **AMC 2018 Medical Services Company Grade Officer Physician**
 - Capt Fahad Pervez
- **AMC 2018 Medical Services Health Services Management Airmen**
 - SrA Jameelah Adams
- **AMC 2018 Medical Services Public Health Airmen**
 - SrA Karie Thomas
- **The Joint Commission Accreditation 2018**





Patient Experience Surveys: 0036 AF-C-436th MEDGRP-DOVER

Joint Outpatient Experience Survey

Joint Outpatient Experience Survey-CAHPS

85.9%

of patients were somewhat or strongly satisfied with the healthcare they received during their visit.

MHS Dashboard Measures

"In general, I am able to see my provider when needed"

60.7%

Target: 84.4%
of patients Somewhat or Strongly Agree

Provider Communication Composite

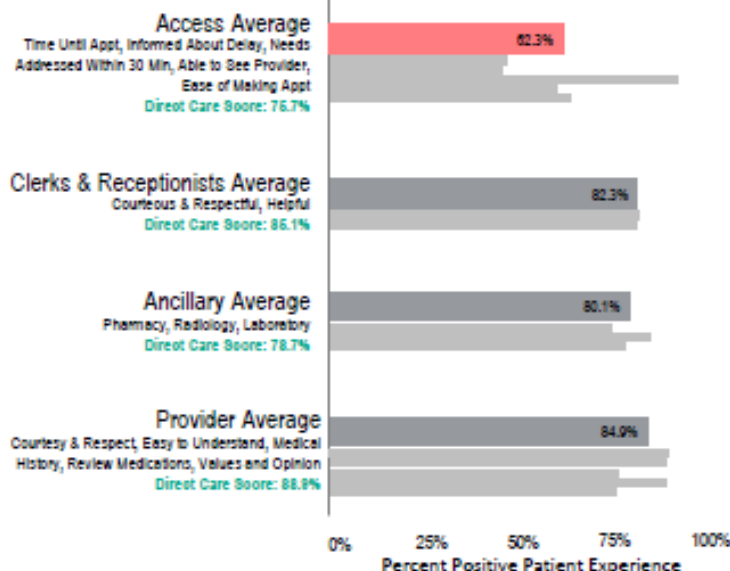
82.8%

Target: 88.0%
of patients indicated their provider Always was respectful, listened, explained clearly, and spent enough time

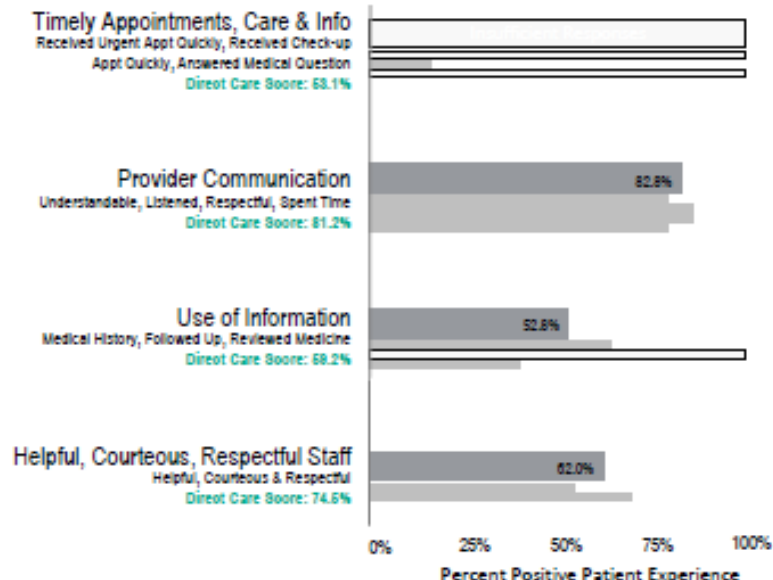
55.3%

of patients gave their provider a rating of 9 or 10 with 10 being the best provider possible

Oct-Dec 2018
Most Recent Data Available

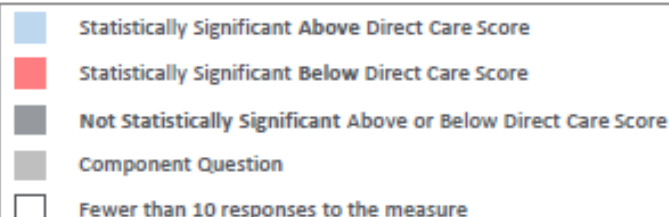


Jul-Sep 2018
Most Recent Data Available



Access
needs improvement, compared to other MTFs

Helpful & Respectful Staff
needs improvement, compared to other MTFs



Part I: MTF Portfolio (Full)

436TH MEDICAL GROUP – DOVER

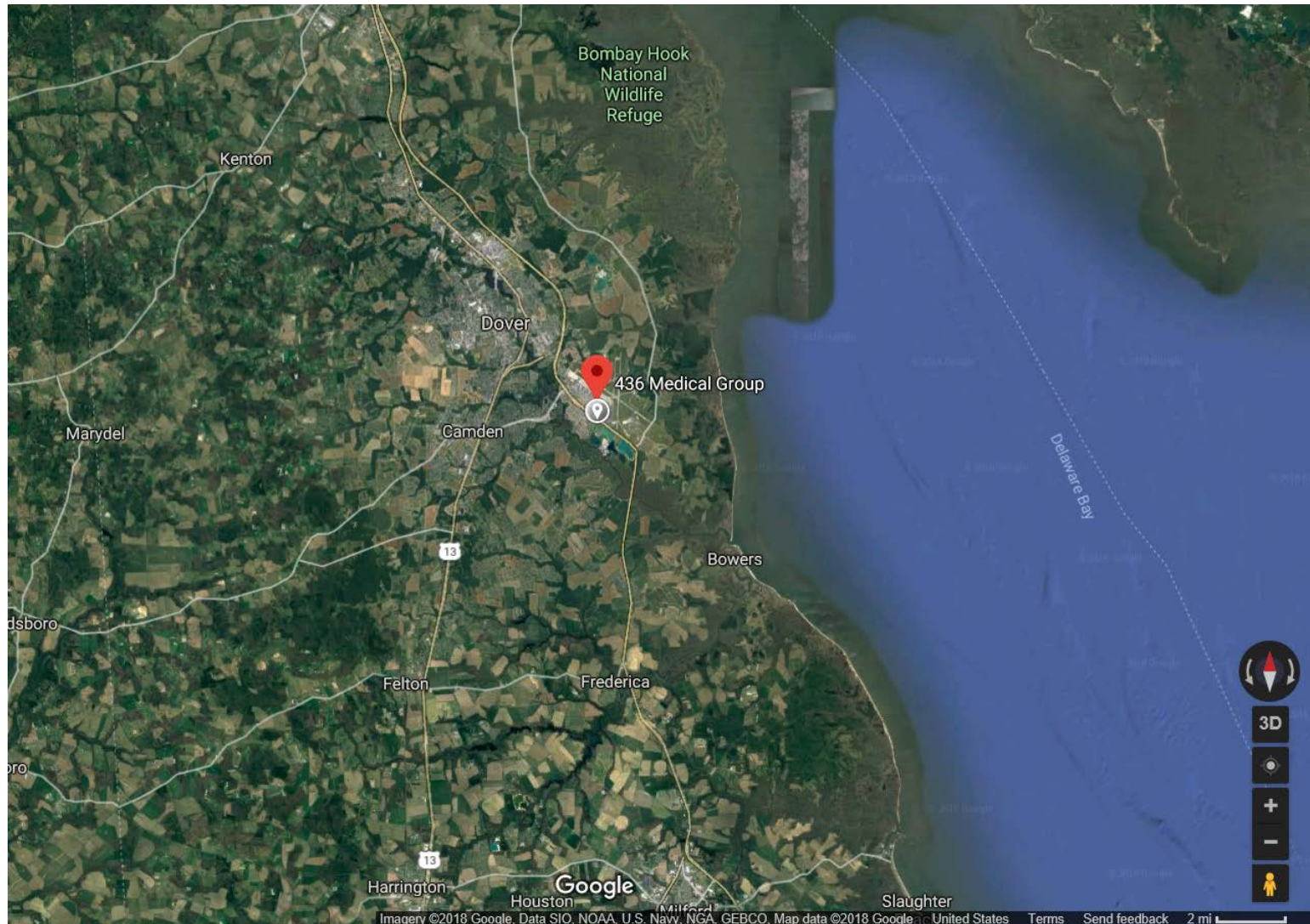


Table of Contents

<u>Section</u>	<u>Slide #</u>
Overview.....	<u>3</u>
Inpatient Care.....	<u>4</u>
Ambulatory Care.....	<u>7</u>
Pharmacy.....	<u>21</u>
Radiology.....	<u>28</u>
Laboratory.....	<u>33</u>
Staffing.....	<u>38</u>
Eligible Population and Enrollment.....	<u>43</u>

Dover – Overview

❑ # of Buildings and Min/Max Age¹: 2, 8 / 61

❑ Avg # of Encounters per day²:

Tmt DMIS ID	Tmt DMIS ID Name	2014	2015	2016	2017	2018
0036	AF-C-436th MEDGRP-DOVER	401	390	396	401	414

❑ ER or Immediate Care³: No

¹ Source: DHA / Facilities Management Division

² Source: M2 CAPER, MEPRS B only, ER (BIA) and Immediate Care (BHI) omitted, Monday-Friday only

³ Source: M2 CAPER, ER (BIA) or Immediate Care (BHI) coded

Inpatient Care

Dover – Prime/Plus Enrollment Inpatient Care¹

0036 AF-C-436th MEDGRP-DOVER Prime/Plus Enrollees Treated in Direct Care										
Product Line	Tmt DMIS ID Name	FY 2016			FY 2017			FY 2018		
		DC Disps	DC CMI	DC Cost per RWP ³	DC Disps	DC CMI	DC Cost per RWP ³	DC Disps	DC CMI	DC Cost per RWP ³
MED	LANDSTUHL REGIONAL MEDCEN	2	0.8507	\$ 7,209				1	0.8648	\$ 9,161
	WALTER REED NATL MIL MED CNTR	3	0.6662	\$ 12,308	3	0.6124	\$ 9,268	5	1.2469	\$ 9,189
SURG	AMC BAMC-FSH							2	1.5917	\$ 15,743
	WALTER REED NATL MIL MED CNTR	8	1.7316	\$ 12,293	11	2.5739	\$ 13,793	4	1.7497	\$ 14,016
MH	FT BELVOIR COMMUNITY HOSP-FBCH	1	0.6197	\$ 44,955	2	0.7488	\$ 59,230			
	LANDSTUHL REGIONAL MEDCEN							2	0.5625	\$ 12,993
	WALTER REED NATL MIL MED CNTR	2	0.6409	\$ 23,414	5	0.5116	\$ 53,160	4	0.6059	\$ 85,288
Total/Overall		18	1.1769	\$ 13,531	25	1.5050	\$ 17,892	26	1.0049	\$ 20,715

0036 AF-C-436th MEDGRP-DOVER Prime/Plus Enrollees Treated in Purchased Care									
Product Line	FY 2016			FY 2017			FY 2018		
	PC Adms	PC CMI	PC Paid per RWP ²	PC Adms	PC CMI	PC Paid per RWP ²	PC Adms	PC CMI	PC Paid per RWP ²
MED	191	0.9306	\$ 8,475	168	0.9470	\$ 9,231	143	0.9604	\$ 14,326
SURG	111	2.3932	\$ 9,445	118	2.5137	\$ 9,535	103	3.3310	\$ 11,380
OB	209	0.5416	\$ 9,096	206	0.5281	\$ 10,028	208	0.5721	\$ 9,909
NEWBORN	204	0.3157	\$ 8,244	200	0.4841	\$ 8,744	184	0.3930	\$ 8,907
MH	5	0.6634	\$ 8,050	9	0.6008	\$ 9,410	3	0.5564	\$ 11,507
Total/Overall	720	0.8671	\$ 8,974	701	0.9511	\$ 9,427	641	1.0506	\$ 11,456

¹ Source: Direct Care: MDR SIDR (Detail truncated for low volume; Total/Overall includes truncated volume); Purchased Care: MDR TED-Institutional. Prime/Plus enrolled to the Parent Site. Includes "fix" to newborn enrollment information.

² Purchased Care includes 13% increase for overhead burdening.

³ FY16-17 Direct Care costs based on respective FY MEPRS expenses; FY18 based on FY17 costs, adjusted for inflation.

Dover – Prime/Plus Enrollment Inpatient Care¹ – AD Only

0036 AF-C-436th MEDGRP-DOVER Prime/Plus Enrollees Treated in Direct Care - AD ONLY										
Product Line	Tmt DMIS ID Name	FY 2016			FY 2017			FY 2018		
		DC Disps	DC CMI	DC Cost per RWP ³	DC Disps	DC CMI	DC Cost per RWP ³	DC Disps	DC CMI	DC Cost per RWP ³
MED	LANDSTUHL REGIONAL MEDCEN	2	0.8507	\$ 7,209				1	0.8648	\$ 9,161
	WALTER REED NATL MIL MED CNTR	1	0.7586	\$ 16,074	1	0.6560	\$ 6,968	4	1.2668	\$ 9,506
SURG	AMC BAMC-FSH							2	1.5917	\$ 15,743
	WALTER REED NATL MIL MED CNTR	1	1.4687	\$ 15,682	3	3.1708	\$ 12,100	2	1.9488	\$ 13,162
MH	LANDSTUHL REGIONAL MEDCEN							2	0.5625	\$ 12,993
	WALTER REED NATL MIL MED CNTR	2	0.6409	\$ 23,414	4	0.5317	\$ 58,092	4	0.6059	\$ 85,288
Total/Overall		7	0.8329	\$ 18,072	12	1.3310	\$ 20,422	19	1.0180	\$ 23,470

0036 AF-C-436th MEDGRP-DOVER Prime/Plus Enrollees Treated in Purchased Care - AD ONLY									
Product Line	FY 2016			FY 2017			FY 2018		
	PC Adms	PC CMI	PC Paid per RWP ²	PC Adms	PC CMI	PC Paid per RWP ²	PC Adms	PC CMI	PC Paid per RWP ²
MED	15	1.0556	\$ 7,666	27	0.8249	\$ 7,697	18	0.7334	\$ 38,067
SURG	18	2.1224	\$ 9,318	19	2.7655	\$ 12,295	21	2.4393	\$ 10,157
OB	35	0.6344	\$ 9,039	39	0.5289	\$ 9,769	51	0.5588	\$ 10,290
MH	0	0.0000	\$ 0	2	0.3438	\$ 8,712	3	0.5564	\$ 11,507
Total/Overall	68	1.1212	\$ 8,894	87	1.1050	\$ 10,662	93	1.0171	\$ 14,116

¹ Source: Direct Care: MDR SIDR (Detail truncated for low volume; Total/Overall includes truncated volume); Purchased Care: MDR TED-Institutional. Prime/Plus enrolled to the Parent Site. Includes "fix" to newborn enrollment information.

² Purchased Care includes 13% increase for overhead burdening.

³ FY16-17 Direct Care costs based on respective FY MEPRS expenses; FY18 based on FY17 costs, adjusted for inflation.

Ambulatory Care

Dover – Direct Care Appointments by Appointment Status¹

Appointment Status	0036 - AF-C-436th MEDGRP-DOVER					
	2016 - # Appts	2016 - % Total	2017 - # Appts	2017 - % Total	2018 - # Appts	2018 - % Total
2 Kept	40,973	35%	37,297	31%	41,493	33%
3 Canceled	13,569	11%	13,077	11%	14,462	12%
4 No Show	2,246	2%	2,492	2%	2,932	2%
5 Walk In	4,054	3%	5,009	4%	6,285	5%
6 Sick Call	745	1%	845	1%	1,004	1%
7 Telcon	56,568	48%	60,293	51%	56,954	46%
8 LWOBS	349	0%	177	0%	129	0%
9 Admin	1	0%	9	0%	5	0%
10 Occ-Svc	5	0%			683	1%
Grand Total	118,510		119,199		123,947	

¹ Source: M2 Appointment, includes MEPRS Codes B**, FBI, and FBN.

Dover – Direct Care Appointments by Appointment Type¹

Appt Type Group	0036 - AF-C-436th MEDGRP-DOVER					
	2016 - # Appts	2016 - % Total	2017 - # Appts	2017 - % Total	2018 - # Appts	2018 - % Total
24HR	14,751	12%	12,553	11%	11,264	9%
ACUTE	227	0%	148	0%	285	0%
FTR	34,090	29%	35,045	29%	36,674	30%
GRP	1,000	1%	913	1%	1,142	1%
PROC	5,365	5%	4,333	4%	6,744	5%
ROUT	424	0%	372	0%	384	0%
SPEC	1,874	2%	1,589	1%	5,042	4%
T-CON*	58,159	49%	62,247	52%	60,043	48%
WELL	2,620	2%	1,999	2%	2,369	2%
Grand Total	118,510		119,199		123,947	

¹ Source: M2 Appointment, includes MEPRS Codes B**, FBI, and FBN.

Dover – FY18 Direct Care Ambulatory Encounters¹

PRODUCT LINE	0036 - AF-C-436th MEDGRP-DOVER			
	Seen	Telcon	Total	% of Total
IMSUB	86	0	86	0.08%
MH	6,721	4,076	10,797	10.15%
OBGYN	1,697	868	2,565	2.41%
OPTOM	2,356	37	2,393	2.25%
ORTHO	4,540	145	4,685	4.40%
OTHER	865	1	866	0.81%
PC	32,518	52,509	85,027	79.90%
TOTAL	48,783	57,636	106,419	

¹ Source: M2 CAPER, includes MEPRS Codes B**, FBI, and FBN.

Dover – Direct Care Ambulatory Surgery¹

This facility did not report any workload coded Same Day Surgery.

¹ Source: M2 CAPER, based on the Same Day Surgery Flag. Based on Parent Tmt DMIS ID.

² Based on the Optum grouping (e.g., CPT codes 20000-29999 are for the Musculoskeletal System). Only the 1st procedural CPT investigated.

Dover – FY18 Direct Care Ambulatory Surgery¹

Top 20 Procedure Codes

This facility did not report any workload coded Same Day Surgery.

¹ Source: M2 CAPER, based on the Same Day Surgery Flag. Based on Parent Tmt DMIS ID. Only Procedure 1 analyzed. Prov Agg Total RVU is for the entire encounter.

Dover – Ambulatory Workload and Cost¹

DC = work performed in the MTF; PC = work performed by a provider within the site's PRISM (parent)

	Product Line	Encounters/Services		Average RVU		Cost/Paid per RVU	
		DC	PC	DC	PC	DC	PC ²
		Encounters	Services	RVU / Encounters	RVU / Services	Full Cost / RVU	Amount Paid / RVU
FY 2018 ³	PC	85,027	86,022	0.77	0.92	\$ 149	\$ 53
	OBGYN	2,565	14,197	2.07	0.80	\$ 100	\$ 55
	MH	10,797	13,133	1.84	1.66	\$ 173	\$ 47
	OTHER	8,030	110,575	2.99	1.13	\$ 66	\$ 47
	TOTAL	106,419	223,927	1.08	1.06	\$ 134	\$ 49
FY 2017 ³	PC	82,501	103,940	0.87	0.99	\$ 152	\$ 51
	OBGYN	3,081	14,109	1.57	1.15	\$ 97	\$ 53
	MH	10,668	11,017	1.61	1.97	\$ 168	\$ 45
	OTHER	7,187	100,989	2.76	1.13	\$ 60	\$ 51
	TOTAL	103,437	230,055	1.10	1.11	\$ 136	\$ 50
FY 2016 ³	PC	81,471	114,333	1.00	0.83	\$ 137	\$ 54
	OBGYN	3,197	16,066	1.82	1.12	\$ 76	\$ 56
	MH	9,501	6,929	1.67	2.68	\$ 191	\$ 39
	OTHER	8,169	102,662	2.80	1.14	\$ 61	\$ 56
	TOTAL	102,338	239,990	1.23	1.04	\$ 127	\$ 54

¹ Source: DC = M2 CAPER; PC = MDR TED Non-Institutional (using “ambulatory” defined by eMSM workgroup; drug costs included; OHI omitted). Includes all beneficiaries. Use caution when making comparisons between DC and PC. Encounters and Services are not comparable. They are provided to give a sense of volume.

² Purchased Care includes 13% increase for overhead burdening.

³ FY16-17 Direct Care costs based on respective FY MEPRS expenses; FY18 based on FY17 costs, adjusted for inflation.

Dover – FY18 Direct and Purchased Care Ambulatory Workload by Enrollment Category¹

Work performed by Dover (parent)³:

AF-C-436th MEDGRP-DOVER - FY 2018 DIRECT CARE AMBULATORY WORKLOAD																					
Product Line	Prime-Site			Reliant			Prime-Other			Plus			TFL			Not Enrolled			Total		
	Encs	Avg RVU	Cost/RVU	Encs	Avg RVU	Cost/RVU	Encs	Avg RVU	Cost/RVU	Encs	Avg RVU	Cost/RVU	Encs	Avg RVU	Cost/RVU	Encs	Avg RVU	Cost/RVU	Encs	Avg RVU	Cost/RVU
PC	82,058	0.76	\$ 148	648	1.05	\$ 168	1,076	0.91	\$ 153	0	0.00	\$ 0	129	0.08	\$ 160	1,116	1.43	\$ 180	85,027	0.77	\$ 149
OBGYN	2,462	2.08	\$ 100	36	2.06	\$ 101	45	1.76	\$ 100	0	0.00	\$ 0	0	0.00	\$ 0	22	1.52	\$ 98	2,565	2.07	\$ 100
MH	10,075	1.87	\$ 172	124	1.30	\$ 193	190	1.14	\$ 165	0	0.00	\$ 0	6	0.97	\$ 169	402	1.53	\$ 185	10,797	1.84	\$ 173
OTHER	7,526	2.94	\$ 66	147	4.58	\$ 67	198	4.11	\$ 63	0	0.00	\$ 0	17	2.07	\$ 52	142	2.65	\$ 61	8,030	2.99	\$ 66
TOTAL	102,121	1.06	\$ 133	955	1.67	\$ 125	1,509	1.39	\$ 117	0	0.00	\$ 0	152	0.33	\$ 86	1,682	1.56	\$ 163	106,419	1.08	\$ 134

↑
29% MCSC; 15% AF-C-82nd MEDGRP-SHEPPARD

Work performed by a provider within Dover’s PRISM (parent)²:

AF-C-436th MEDGRP-DOVER - FY 2018 PURCHASED CARE AMBULATORY WORKLOAD																					
Product Line	Prime-Site			Reliant			Prime-Other			Plus			TFL			Not Enrolled			Total		
	Svcs	Avg RVU	Paid/RVU	Svcs	Avg RVU	Paid/RVU	Svcs	Avg RVU	Paid/RVU	Svcs	Avg RVU	Paid/RVU	Svcs	Avg RVU	Paid/RVU	Svcs	Avg RVU	Paid/RVU	Svcs	Avg RVU	Paid/RVU
PC	59,008	0.75	\$ 58	132	1.54	\$ 56	8,806	1.28	\$ 53	2	2.01	\$ 31	1,963	2.01	\$ 52	16,111	1.18	\$ 43	86,022	0.92	\$ 53
OBGYN	9,446	0.76	\$ 57	11	1.93	\$ 59	1,898	0.72	\$ 55	0	0.00	\$ 0	158	2.56	\$ 12	2,684	0.92	\$ 55	14,197	0.80	\$ 55
MH	9,882	1.54	\$ 50	11	3.66	\$ 35	1,001	1.77	\$ 50	0	0.00	\$ 0	53	2.94	\$ 39	2,186	2.11	\$ 35	13,133	1.66	\$ 47
OTHER	77,211	1.16	\$ 48	335	1.29	\$ 47	14,591	0.94	\$ 49	9	1.46	\$ 9	3,947	1.27	\$ 44	14,482	1.14	\$ 39	110,575	1.13	\$ 47
TOTAL	155,547	1.00	\$ 51	489	1.43	\$ 49	26,296	1.07	\$ 51	11	1.56	\$ 14	6,121	1.56	\$ 46	35,463	1.20	\$ 41	223,927	1.06	\$ 49

↑
94% MCSC

¹ Source: DC = M2 CAPER; PC = MDR TED Non-Institutional (using “ambulatory” defined by eMSM workgroup; drug costs included; OHI omitted). Includes all beneficiaries. Use caution when making comparisons between DC and PC. Encounters and Services are not comparable. They are provided to give a sense of volume.

² Purchased Care includes 13% increase for overhead burdening.

³ Direct Care costs based on FY17 MEPRS expenses, adjusted for inflation.

Dover – FY17 Direct and Purchased Care Ambulatory Workload by Enrollment Category¹

Work performed by Dover (parent)³:

AF-C-436th MEDGRP-DOVER - FY 2017 DIRECT CARE AMBULATORY WORKLOAD																					
Product Line	Prime-Site			Reliant			Prime-Other			Plus			TFL			Not Enrolled			Total		
	Encs	Avg RVU	Cost/RVU	Encs	Avg RVU	Cost/RVU	Encs	Avg RVU	Cost/RVU	Encs	Avg RVU	Cost/RVU	Encs	Avg RVU	Cost/RVU	Encs	Avg RVU	Cost/RVU	Encs	Avg RVU	Cost/RVU
PC	79,663	0.85	\$ 151	590	1.17	\$ 185	497	1.16	\$ 176	2	2.67	\$ 197	82	0.53	\$ 182	1,667	1.47	\$ 182	82,501	0.87	\$ 152
OBGYN	2,934	1.59	\$ 97	51	1.53	\$ 99	34	1.36	\$ 98	0	0.00	\$ 0	0	0.00	\$ 0	62	0.71	\$ 95	3,081	1.57	\$ 97
MH	9,995	1.62	\$ 167	168	1.52	\$ 179	145	1.38	\$ 175	0	0.00	\$ 0	2	0.67	\$ 161	358	1.38	\$ 178	10,668	1.61	\$ 168
OTHER	6,743	2.77	\$ 60	128	3.83	\$ 60	88	3.71	\$ 56	0	0.00	\$ 0	84	1.11	\$ 18	144	1.96	\$ 55	7,187	2.76	\$ 60
TOTAL	99,335	1.08	\$ 135	937	1.62	\$ 139	764	1.51	\$ 139	2	2.67	\$ 197	168	0.82	\$ 72	2,231	1.46	\$ 169	103,437	1.10	\$ 136

↑
29% MCSC; 13% AF-MC-81st MEDGRP-KEESLER

Work performed by a provider within Dover’s PRISM (parent)²:

AF-C-436th MEDGRP-DOVER - FY 2017 PURCHASED CARE AMBULATORY WORKLOAD																					
Product Line	Prime-Site			Reliant			Prime-Other			Plus			TFL			Not Enrolled			Total		
	Svcs	Avg RVU	Paid/RVU	Svcs	Avg RVU	Paid/RVU	Svcs	Avg RVU	Paid/RVU	Svcs	Avg RVU	Paid/RVU	Svcs	Avg RVU	Paid/RVU	Svcs	Avg RVU	Paid/RVU	Svcs	Avg RVU	Paid/RVU
PC	66,552	0.90	\$ 53	422	1.09	\$ 48	12,595	1.14	\$ 53	6	2.07	\$ 34	2,508	1.97	\$ 54	21,857	1.08	\$ 43	103,940	0.99	\$ 51
OBGYN	9,552	1.16	\$ 55	37	2.67	\$ 53	1,273	1.10	\$ 55	0	0.00	\$ 0	121	3.29	\$ 11	3,126	1.04	\$ 53	14,109	1.15	\$ 53
MH	8,674	1.77	\$ 48	0	0.00	\$ 0	907	2.38	\$ 45	0	0.00	\$ 0	37	2.99	\$ 32	1,399	2.87	\$ 33	11,017	1.97	\$ 45
OTHER	73,231	1.10	\$ 53	229	1.55	\$ 56	13,602	1.04	\$ 51	8	1.97	\$ 28	3,575	1.24	\$ 46	10,344	1.42	\$ 41	100,989	1.13	\$ 51
TOTAL	158,009	1.06	\$ 53	688	1.33	\$ 52	28,377	1.13	\$ 52	14	2.01	\$ 31	6,241	1.58	\$ 48	36,726	1.24	\$ 42	230,055	1.11	\$ 51

↑
97% MCSC

¹ Source: DC = M2 CAPER; PC = MDR TED Non-Institutional (using “ambulatory” defined by eMSM workgroup; drug costs included; OHI omitted). Includes all beneficiaries. Use caution when making comparisons between DC and PC. Encounters and Services are not comparable. They are provided to give a sense of volume.

² Purchased Care includes 13% increase for overhead burdening.

³ Direct Care costs based on FY17 MEPRS expenses.

Dover – Prime Enrollment Ambulatory Care¹ – DIRECT CARE

Tmt Parent Dover?	Product Line	Tmt Parent DMIS ID Name	2017					2018				
			Encounters	Enh Total RVU	Full Cost ²	Avg RVU	Cost ² /RVU	Encounters	Enh Total RVU	Full Cost ²	Avg RVU	Cost ² /RVU
YES	PC	AF-C-436th MEDGRP-DOVER	79,663	67,738.81	\$ 10,218,522	0.85	\$ 151	82,058	62,034.14	\$ 9,200,671	0.76	\$ 148
	OBGYN	AF-C-436th MEDGRP-DOVER	2,934	4,675.13	\$ 453,945	1.59	\$ 97	2,462	5,116.34	\$ 511,865	2.08	\$ 100
	MH	AF-C-436th MEDGRP-DOVER	9,995	16,239.23	\$ 2,713,023	1.62	\$ 167	10,075	18,837.81	\$ 3,246,570	1.87	\$ 172
	OTHER	AF-C-436th MEDGRP-DOVER	6,743	18,664.49	\$ 1,122,304	2.77	\$ 60	7,526	22,149.43	\$ 1,469,066	2.94	\$ 66
Yes Total			99,335	107,317.66	\$ 14,507,794	1.08	\$ 135	102,121	108,137.72	\$ 14,428,172	1.06	\$ 133
NO	MH	FT BELVOIR COMMUNITY HOSP-FBCH	124	328.68	\$ 35,597	2.65	\$ 108	302	858.35	\$ 118,583	2.84	\$ 138
	OTHER	WALTER REED NATL MIL MED CNTR	414	1,191.17	\$ 337,879	2.88	\$ 284	401	1,193.42	\$ 285,667	2.98	\$ 239
	OTHER	AF-ASU-11th MEDGRP-ANDREWS	213	1,201.18	\$ 148,060	5.64	\$ 123	233	1,331.90	\$ 167,346	5.72	\$ 126
No Total			2,135	5,809.42	\$ 981,593	2.72	\$ 169	2,505	6,954.03	\$ 1,103,438	2.78	\$ 159
Total/Overall			101,470	113,127.08	\$ 15,489,386	1.11	\$ 137	104,626	115,091.75	\$ 15,531,610	1.10	\$ 135

¹ Source: Direct Care: M2 CAPER, Prime Enrolled, MEPRS B, FBI, FBN. Data truncated for small volumes. Use caution when making comparisons between DC and PC. Encounters and Services are not comparable. They are provided to give a sense of volume.

² Direct Care costs based on FY17 MEPRS expenses, with FY18 adjusted for inflation.

Dover – Prime Enrollment Ambulatory Care¹ – PURCHASED CARE

Product Line	2017					2018				
	# Svcs	Enh Total RVU	Amt Paid ²	Avg RVU	Paid ² / RVU	# Svcs	Enh Total RVU	Amt Paid ²	Avg RVU	Paid ² / RVU
PC	80,553	74,026.92	\$ 4,448,104	0.92	\$ 60	79,687	64,631.27	\$ 4,260,799	0.81	\$ 66
OBGYN	11,126	14,346.09	\$ 914,893	1.29	\$ 64	10,248	8,845.21	\$ 588,639	0.86	\$ 67
MH	12,071	18,039.30	\$ 1,187,905	1.49	\$ 66	13,915	18,494.12	\$ 1,290,065	1.33	\$ 70
OTHER	86,339	100,356.55	\$ 6,226,954	1.16	\$ 62	100,577	123,535.98	\$ 7,656,296	1.23	\$ 62
TOTAL	190,089	206,768.86	\$ 12,777,856	1.09	\$ 62	204,427	215,506.58	\$ 13,795,799	1.05	\$ 64

¹ Source: Purchased Care: MDR TED Non-institutional, Prime Enrolled to the Parent Site (using “ambulatory” defined by eMSM workgroup; drug costs included; OHI omitted). Use caution when making comparisons between DC and PC. Encounters and Services are not comparable. They are provided to give a sense of volume.

² Purchased Care includes 13% increase for overhead burdening.

Dover – Direct Care ER/Immed. Care (MEPRS BIA/BHI)¹

This facility did not report any workload in BIA or BHI.

Dover – Direct Care ER/IC Disposition Code²

This facility did not report any workload in BIA or BHI.

¹ Numeric values and R are for outpatient encounters; alphanumeric A-G are for inpatient encounters.

² Source: M2 CAPER. Based on Treatment Parent DMIS ID. BIA=Emergency Room (ER); BHI=Immediate Care (IC).

Dover – Direct Care ER/IC Top 15 Diagnosis Codes¹ (Reason for being seen)

This facility did not report any workload in BIA or BHI.

Pharmacy

Dover – Direct Care Pharmacy¹ by Enrollment Group

PARENT 0036 AF-C-436th MEDGRP-DOVER										
Enr Group	2017					2018				
	# Scripts	Days Supply	Full Cost	Cost / Script	Cost / Day	# Scripts	Days Supply	Full Cost	Cost / Script	Cost / Day
Prime-MTF	64,690	3,232,278	\$ 2,711,531	\$ 42	\$ 0.84	66,420	3,371,824	\$ 2,864,440	\$ 43	\$ 0.85
Prime-MCSC	7,648	492,899	\$ 348,799	\$ 46	\$ 0.71	7,433	490,130	\$ 328,262	\$ 44	\$ 0.67
Reliant	380	11,835	\$ 11,338	\$ 30	\$ 0.96	569	22,282	\$ 14,918	\$ 26	\$ 0.67
Plus	1,211	89,619	\$ 47,432	\$ 39	\$ 0.53	1,384	103,066	\$ 50,269	\$ 36	\$ 0.49
Overseas Prime	1	10	\$ 21	\$ 21	\$ 2.12	0	0	\$ 0	\$ 0	\$ 0.00
Desig Prov	122	8,502	\$ 5,615	\$ 46	\$ 0.66	204	13,763	\$ 7,241	\$ 35	\$ 0.53
Other	91,235	6,645,075	\$ 4,094,466	\$ 45	\$ 0.62	91,763	6,776,578	\$ 3,970,057	\$ 43	\$ 0.59
Grand Total	165,287	10,480,218	\$ 7,219,203	\$ 44	\$ 0.69	167,773	10,777,643	\$ 7,235,187	\$ 43	\$ 0.67

¹ Source: M2 PDTS, Source System D (Direct Care) and C (Clinician Administered Drug).

Dover – Direct Care Pharmacy¹ by Enrollment Group

0036 AF-C-436th MEDGRP-DOVER										
Enr Group	2017					2018				
	# Scripts	Days Supply	Full Cost	Cost / Script	Cost / Day	# Scripts	Days Supply	Full Cost	Cost / Script	Cost / Day
Prime-MTF	64,690	3,232,278	\$ 2,711,531	\$ 42	\$ 0.84	66,420	3,371,824	\$ 2,864,440	\$ 43	\$ 0.85
Prime-MCSC	7,648	492,899	\$ 348,799	\$ 46	\$ 0.71	7,433	490,130	\$ 328,262	\$ 44	\$ 0.67
Reliant	380	11,835	\$ 11,338	\$ 30	\$ 0.96	569	22,282	\$ 14,918	\$ 26	\$ 0.67
Plus	1,211	89,619	\$ 47,432	\$ 39	\$ 0.53	1,384	103,066	\$ 50,269	\$ 36	\$ 0.49
Overseas Prime	1	10	\$ 21	\$ 21	\$ 2.12	0	0	\$ 0	\$ 0	\$ 0.00
Desig Prov	122	8,502	\$ 5,615	\$ 46	\$ 0.66	204	13,763	\$ 7,241	\$ 35	\$ 0.53
Other	91,235	6,645,075	\$ 4,094,466	\$ 45	\$ 0.62	91,763	6,776,578	\$ 3,970,057	\$ 43	\$ 0.59
Grand Total	165,287	10,480,218	\$ 7,219,203	\$ 44	\$ 0.69	167,773	10,777,643	\$ 7,235,187	\$ 43	\$ 0.67

¹ Source: M2 PDTS, Source System D (Direct Care) and C (Clinician Administered Drug).

Dover – FY18 Direct Care Pharmacy

Top 20 Products Dispensed¹ by # of Scripts and Cost/Day

0036 AF-C-436th MEDGRP-DOVER					
TOP 20 BASED ON VOLUME					
Product Name	Number of Scripts	Days Supply	Full Cost	Cost / script	Cost / Day
ATORVASTATIN CALCIUM	5,145	453,774	\$ 80,975	\$ 16	\$ 0.18
LISINOPRIL	4,191	364,842	\$ 50,099	\$ 12	\$ 0.14
SYNTHROID	4,028	345,454	\$ 71,173	\$ 18	\$ 0.21
CETIRIZINE HCL	3,417	258,870	\$ 44,203	\$ 13	\$ 0.17
SIMVASTATIN	3,124	277,982	\$ 43,979	\$ 14	\$ 0.16
OMEPRAZOLE	2,988	246,189	\$ 50,764	\$ 17	\$ 0.21
AMLODIPINE BESYLATE	2,767	236,702	\$ 40,785	\$ 15	\$ 0.17
FLUTICASONE PROPIONATE	2,639	178,393	\$ 47,175	\$ 18	\$ 0.26
HYDROCHLOROTHIAZIDE	2,477	216,749	\$ 29,513	\$ 12	\$ 0.14
TOPROL XL	2,424	211,120	\$ 60,478	\$ 25	\$ 0.29
IBUPROFEN	2,260	40,828	\$ 27,512	\$ 12	\$ 0.67
PROAIR HFA	2,142	113,420	\$ 56,511	\$ 26	\$ 0.50
MONTELUKAST SODIUM	2,095	174,660	\$ 44,361	\$ 21	\$ 0.25
METFORMIN HCL	2,052	176,430	\$ 27,495	\$ 13	\$ 0.16
ASPIR-LOW	1,928	169,215	\$ 20,769	\$ 11	\$ 0.12
PANTOPRAZOLE SODIUM	1,693	138,218	\$ 35,393	\$ 21	\$ 0.26
GABAPENTIN	1,655	98,184	\$ 41,805	\$ 25	\$ 0.43
VIAGRA	1,605	101,701	\$ 115,915	\$ 72	\$ 1.14
AMOXICILLIN	1,543	16,879	\$ 20,030	\$ 13	\$ 1.19
PREDNISON	1,529	28,640	\$ 21,714	\$ 14	\$ 0.76

0036 AF-C-436th MEDGRP-DOVER					
TOP 20 BASED ON COST PER DAY					
Product Name	Number of Scripts	Days Supply	Full Cost	Cost / script	Cost / Day
PICATO	1	2	\$ 526	\$ 526	\$ 263.24
SPRYCEL	4	360	\$ 65,183	\$ 16,296	\$ 181.06
TECFIDERA	11	930	\$ 117,413	\$ 10,674	\$ 126.25
ENBREL	39	1,308	\$ 143,864	\$ 3,689	\$ 109.99
GILENYA	9	510	\$ 48,142	\$ 5,349	\$ 94.40
BANZEL	12	360	\$ 29,877	\$ 2,490	\$ 82.99
ORENCIA	3	264	\$ 19,224	\$ 6,408	\$ 72.82
ENBREL SURECLICK	25	724	\$ 47,083	\$ 1,883	\$ 65.03
SULFACETAMIDE SODIUM	7	107	\$ 6,425	\$ 918	\$ 60.05
SYNAGIS	4	120	\$ 7,016	\$ 1,754	\$ 58.47
LEUPROLIDE ACETATE	1	28	\$ 1,530	\$ 1,530	\$ 54.65
EMEND	1	1	\$ 54	\$ 54	\$ 53.90
MONUROL	1	1	\$ 49	\$ 49	\$ 49.11
ATRIPLA	12	780	\$ 36,857	\$ 3,071	\$ 47.25
VANCOMYCIN HCL	3	23	\$ 1,058	\$ 353	\$ 45.98
GENVOYA	11	630	\$ 28,743	\$ 2,613	\$ 45.62
STELARA	1	84	\$ 3,323	\$ 3,323	\$ 39.56
PENNSAID	2	60	\$ 2,007	\$ 1,004	\$ 33.46
FORTEO	3	270	\$ 8,937	\$ 2,979	\$ 33.10
GLATIRAMER ACETATE	2	168	\$ 5,523	\$ 2,761	\$ 32.87

¹ Source: M2 PDTS, Source System D (Direct Care) and C (Clinician Administered Drug).

Dover – Purchased Care Pharmacy¹

based on “Parent” PRISM Area ID by Enrollment Group

PARENT PRISM 0036 AF-C-436th MEDGRP-DOVER											
Source System	Enrollment Group	2017					2018				
		# Scripts	Days Supply	Paid by TRICARE	Paid / Script	Paid / Day	# Scripts	Days Supply	Paid by TRICARE	Paid / Script	Paid / Day
MCSC (Retail)	Prime-MTF	19,017	465,853	\$ 2,490,012	\$ 131	\$ 5.35	19,555	470,837	\$ 2,669,888	\$ 137	\$ 5.67
	Prime-MCSC	6,800	208,946	\$ 1,006,738	\$ 148	\$ 4.82	6,299	188,663	\$ 776,642	\$ 123	\$ 4.12
	Reliant	89	1,247	\$ 2,178	\$ 24	\$ 1.75	156	2,575	\$ 4,327	\$ 28	\$ 1.68
	Plus	157	5,635	\$ 3,791	\$ 24	\$ 0.67	184	7,295	\$ 3,379	\$ 18	\$ 0.46
	Overseas Prime	1	10	\$ 5	\$ 5	\$ 0.53	0	0	\$ 0	\$ 0	\$ 0.00
	Desig Prov	0	0	\$ 0	\$ 0	\$ 0.00	3	39	\$ 0	\$ 0	\$ 0.00
	Other	58,045	2,297,096	\$ 2,959,831	\$ 51	\$ 1.29	57,225	2,212,815	\$ 3,123,109	\$ 55	\$ 1.41
MCSC Total		84,109	2,978,787	\$ 6,462,555	\$ 77	\$ 2.17	83,422	2,882,224	\$ 6,577,345	\$ 79	\$ 2.28
Mail Order	Prime-MTF	3,556	293,562	\$ 1,018,431	\$ 286	\$ 3.47	3,077	254,038	\$ 1,031,160	\$ 335	\$ 4.06
	Prime-MCSC	2,785	234,711	\$ 420,365	\$ 151	\$ 1.79	2,463	204,602	\$ 427,997	\$ 174	\$ 2.09
	Reliant	8	804	\$ 546	\$ 68	\$ 0.68	5	410	\$ 9,929	\$ 1,986	\$ 24.22
	Plus	185	14,430	\$ 18,651	\$ 101	\$ 1.29	150	11,803	\$ 12,047	\$ 80	\$ 1.02
	Other	25,102	2,146,430	\$ 3,149,135	\$ 125	\$ 1.47	23,234	1,984,464	\$ 3,293,636	\$ 142	\$ 1.66
Mail Order Total		31,636	2,689,937	\$ 4,607,129	\$ 146	\$ 1.71	28,929	2,455,317	\$ 4,774,770	\$ 165	\$ 1.94
Grand Total		115,745	5,668,724	\$ 11,069,684	\$ 96	\$ 1.95	112,351	5,337,541	\$ 11,352,114	\$ 101	\$ 2.13

¹ Source: M2 PDTS, Source System M (MCSC) and T (Mail Order). Parent PRISM is a derived field and includes all children of the Parent DMIS ID.

Dover – Purchased Care Pharmacy¹ based on PRISM Area ID by Enrollment Group

0036 AF-C-436th MEDGRP-DOVER											
Source System	Enrollment Group	2017					2018				
		# Scripts	Days Supply	Paid by TRICARE	Paid / Script	Paid / Day	# Scripts	Days Supply	Paid by TRICARE	Paid / Script	Paid / Day
MCSC (Retail)	Prime-MTF	19,017	465,853	\$ 2,490,012	\$ 131	\$ 5.35	19,555	470,837	\$ 2,669,888	\$ 137	\$ 5.67
	Prime-MCSC	6,800	208,946	\$ 1,006,738	\$ 148	\$ 4.82	6,299	188,663	\$ 776,642	\$ 123	\$ 4.12
	Reliant	89	1,247	\$ 2,178	\$ 24	\$ 1.75	156	2,575	\$ 4,327	\$ 28	\$ 1.68
	Plus	157	5,635	\$ 3,791	\$ 24	\$ 0.67	184	7,295	\$ 3,379	\$ 18	\$ 0.46
	Overseas Prime	1	10	\$ 5	\$ 5	\$ 0.53	0	0	\$ 0	\$ 0	\$ 0.00
	Desig Prov	0	0	\$ 0	\$ 0	\$ 0.00	3	39	\$ 0	\$ 0	\$ 0.00
	Other	58,045	2,297,096	\$ 2,959,831	\$ 51	\$ 1.29	57,225	2,212,815	\$ 3,123,109	\$ 55	\$ 1.41
MCSC Total		84,109	2,978,787	\$ 6,462,555	\$ 77	\$ 2.17	83,422	2,882,224	\$ 6,577,345	\$ 79	\$ 2.28
Mail Order	Prime-MTF	3,556	293,562	\$ 1,018,431	\$ 286	\$ 3.47	3,077	254,038	\$ 1,031,160	\$ 335	\$ 4.06
	Prime-MCSC	2,785	234,711	\$ 420,365	\$ 151	\$ 1.79	2,463	204,602	\$ 427,997	\$ 174	\$ 2.09
	Reliant	8	804	\$ 546	\$ 68	\$ 0.68	5	410	\$ 9,929	\$ 1,986	\$ 24.22
	Plus	185	14,430	\$ 18,651	\$ 101	\$ 1.29	150	11,803	\$ 12,047	\$ 80	\$ 1.02
	Other	25,102	2,146,430	\$ 3,149,135	\$ 125	\$ 1.47	23,234	1,984,464	\$ 3,293,636	\$ 142	\$ 1.66
Mail Order Total		31,636	2,689,937	\$ 4,607,129	\$ 146	\$ 1.71	28,929	2,455,317	\$ 4,774,770	\$ 165	\$ 1.94
Grand Total		115,745	5,668,724	\$ 11,069,684	\$ 96	\$ 1.95	112,351	5,337,541	\$ 11,352,114	\$ 101	\$ 2.13

¹ Source: M2 PDTS, Source System M (MCSC) and T (Mail Order). Based on PRISM Area ID.

Dover – FY18 Purchased Care Pharmacy¹

Top 20 Products Dispensed by # of Scripts and Cost/Day

0036 AF-C-436th MEDGRP-DOVER					
TOP 20 BASED ON VOLUME					
Product Name	Number of Scripts	Days Supply	Paid by TRICARE	Paid / Script	Paid / Day
ATORVASTATIN CALCIUM	2,664	200,658	\$ 148,464	\$ 56	\$ 0.74
AMOXICILLIN	2,202	19,687	\$ 1,606	\$ 1	\$ 0.08
LEVOTHYROXINE SODIUM	1,994	145,866	\$ 9,975	\$ 5	\$ 0.07
PREDNISON	1,880	28,704	\$ 2,144	\$ 1	\$ 0.07
LISINAPRIL	1,804	135,359	\$ 2,691	\$ 1	\$ 0.02
AMLODIPINE BESYLATE	1,688	120,450	\$ 19,119	\$ 11	\$ 0.16
OMEPRAZOLE	1,607	110,318	\$ 22,820	\$ 14	\$ 0.21
AZITHROMYCIN	1,490	9,642	\$ 6,205	\$ 4	\$ 0.64
FLUTICASONE PROPIONATE	1,484	73,755	\$ 4,344	\$ 3	\$ 0.06
GABAPENTIN	1,323	68,496	\$ 37,385	\$ 28	\$ 0.55
OXYCODONE-ACETAMINOPHEN	1,240	18,615	\$ 8,245	\$ 7	\$ 0.44
TRAMADOL HCL	1,187	26,185	\$ 14,661	\$ 12	\$ 0.56
HYDROCHLOROTHIAZIDE	1,176	92,710	- \$ 33	\$ 0	\$ 0.00
IBUPROFEN	1,095	18,160	\$ 1,142	\$ 1	\$ 0.06
FUROSEMIDE	1,066	70,132	\$ 10,630	\$ 10	\$ 0.15
AMOXICILLIN-CLAVULANATE POT	1,038	9,548	\$ 3,307	\$ 3	\$ 0.35
ROSUVASTATIN CALCIUM	1,033	80,314	\$ 109,172	\$ 106	\$ 1.36
PROAIR HFA	1,019	37,230	\$ 29,590	\$ 29	\$ 0.79
HYDROCODONE-ACETAMINOPHEN	1,002	11,006	\$ 5,745	\$ 6	\$ 0.52
SIMVASTATIN	1,002	81,525	\$ 59,410	\$ 59	\$ 0.73

0036 AF-C-436th MEDGRP-DOVER					
TOP 20 BASED ON COST PER DAY					
Product Name	Number of Scripts	Days Supply	Paid by TRICARE	Paid / Script	Paid / Day
FIRAZYR	3	3	\$ 95,108	\$ 31,703	\$ 31,702.72
MYALEPT	5	150	\$ 297,009	\$ 59,402	\$ 1,980.06
KOGENATE FS	15	376	\$ 455,110	\$ 30,341	\$ 1,210.40
HARVONI	1	28	\$ 31,350	\$ 31,350	\$ 1,119.65
NEUPOGEN	1	20	\$ 20,430	\$ 20,430	\$ 1,021.49
APOKYN	7	210	\$ 160,084	\$ 22,869	\$ 762.30
ZEJULA	1	30	\$ 19,882	\$ 19,882	\$ 662.73
POMALYST	12	336	\$ 185,947	\$ 15,496	\$ 553.41
CABOMETYX	10	300	\$ 162,606	\$ 16,261	\$ 542.02
SABRIL	10	300	\$ 154,091	\$ 15,409	\$ 513.64
LENVIMA	2	60	\$ 30,728	\$ 15,364	\$ 512.14
KUVAN	11	330	\$ 165,467	\$ 15,042	\$ 501.41
REVLIMID	45	1,218	\$ 588,563	\$ 13,079	\$ 483.22
LYNPARZA	3	90	\$ 41,284	\$ 13,761	\$ 458.71
VIGABATRIN	2	60	\$ 25,947	\$ 12,973	\$ 432.45
XYREM	15	445	\$ 188,317	\$ 12,554	\$ 423.18
IMBRUVICA	12	348	\$ 138,727	\$ 11,561	\$ 398.64
IBRANCE	2	49	\$ 17,539	\$ 8,770	\$ 357.94
TRACLEER	11	330	\$ 116,852	\$ 10,623	\$ 354.10
DIFICID	1	10	\$ 3,464	\$ 3,464	\$ 346.41

¹ Source: M2 PDTS, Source System M (MCSC) and T (Mail Order). Based on PRISM Area ID.

Radiology

Dover – Direct Care Radiology¹ Services by Ordering Product Line and Enrollment Category

0036 AF-C-436th MEDGRP-DOVER							
FY 2017 RADIOLOGY SERVICES							
Ordering Product Line	Prime - Site	Reliant	Prime - Other	Plus	TFL	Not Enrolled	Total
Special Programs	282	2	18		102	72	476
Mental Health	4						4
Optometry						2	2
Orthopedics	2						2
Primary Care	3,468	46	36			92	3,642
Total	3,756	48	54	0	102	166	4,126

0036 AF-C-436th MEDGRP-DOVER							
FY 2018 RADIOLOGY SERVICES							
Ordering Product Line	Prime - Site	Reliant	Prime - Other	Plus	TFL	Not Enrolled	Total
Special Programs	360		38		86	50	534
Mental Health	2						2
OB/GYN	2						2
Orthopedics	4						4
Primary Care	2,824	16	46			34	2,920
Total	3,192	16	84	0	86	84	3,462

¹ Source: M2 Radiology Detail, includes both Technical and Professional services. Prime-Site defined as Enrollment Site Parent equal to Tmt Parent. Ordering Product Line based on Ordering MEPRS Code.

Dover – FY18 Direct Care Top 20 Radiology Procedures¹ by Number of Services and Cost/Svc

0036 AF-C-436th MEDGRP-DOVER						
TOP 20 RADIOLOGY PROCEDURES BY VOLUME						
Procedure Code	Description	FY 2018				
		# of Svcs	Total RVU	Full Cost	Avg RVU	Cost / Svc
73560	RADIOLOGIC EXAM,KNEE;1/2 VIEWS	490	209.86	\$ 38,430	0.43	\$ 78.43
71020	RAD EXM,CHEST,2,FRONTAL & LAT;	450	173.25	\$ 31,727	0.39	\$ 70.51
72100	RAD EXM,SPINE,LUMBO; 2/3 VIEWS	398	193.03	\$ 35,348	0.49	\$ 88.82
73030	RAD EXM,SHLDR;COMP,MIN 2 VIEW	298	120.14	\$ 22,000	0.40	\$ 73.83
73630	RAD EXM,FOOT;COMP, MIN 3 VIEWS	246	99.31	\$ 18,186	0.40	\$ 73.93
73130	RAD EXAM, HAND; MIN OF 3 VIEWS	194	84.52	\$ 15,478	0.44	\$ 79.78
73610	RAD EXAM,ANK;COMP,MIN 3 VIEWS	178	77.43	\$ 14,179	0.44	\$ 79.66
72050	RAD EXAM,SPINE,CERV; 4/5 VIEWS	158	98.75	\$ 18,083	0.63	\$ 114.45
73590	RAD EXM;TIBIA & FIBULA,2 VIEWS	140	55.30	\$ 10,127	0.40	\$ 72.34
73110	RAD EXM,WRIST;COMP,MIN 3 VIEWS	118	57.39	\$ 10,509	0.49	\$ 89.06
71010	CHEST X-RAY	116	35.96	\$ 6,585	0.31	\$ 56.77
73660	RAD EXM;TOE(S),MIN OF 2 VIEWS	74	28.79	\$ 5,272	0.39	\$ 71.24
72200	RAD EXM,SACROILIAC JT;< 3 VIEW	70	27.30	\$ 4,999	0.39	\$ 71.42
74000	X-RAY EXAM OF ABDOMEN	68	22.10	\$ 4,047	0.33	\$ 59.52
72070	RAD EXM,SPINE;THORACIC,2 VIEWS	66	31.02	\$ 5,681	0.47	\$ 86.07
73070	RADIOLOGIC EXAM,ELBOW; 2 VIEWS	56	21.00	\$ 3,846	0.38	\$ 68.67
73140	RAD EXAM,FINGER(S),MIN 2 VIEWS	46	20.31	\$ 3,719	0.44	\$ 80.85
74022	RADIO EXAM ABDM,SNGL VIEW CHST	46	28.29	\$ 5,180	0.62	\$ 112.62
72072	RAD EXM,SPINE;THORACIC,3 VIEWS	38	18.10	\$ 3,315	0.48	\$ 87.23
73650	RAD EXM;CALCANEUS, MIN 2 VIEWS	30	11.17	\$ 2,045	0.37	\$ 68.18

0036 AF-C-436th MEDGRP-DOVER						
TOP 20 RADIOLOGY PROCEDURES BY COST/SVC						
Procedure Code	Description	FY 2018				
		# of Svcs	Total RVU	Full Cost	Avg RVU	Cost / Svc
72052	RAD EXM,SPINE,CERV;6/MOR VIEWS	10	7.75	\$ 1,419	0.78	\$ 141.92
72110	RAD EXM,SPINE,LUMBO;MIN 4 VIEW	14	9.45	\$ 1,730	0.68	\$ 123.61
70260	RAD EXM,SKULL;COMP,MIN 4 VIEWS	2	1.26	\$ 231	0.63	\$ 115.37
72050	RAD EXAM,SPINE,CERV; 4/5 VIEWS	158	98.75	\$ 18,083	0.63	\$ 114.45
74022	RADIO EXAM ABDM,SNGL VIEW CHST	46	28.29	\$ 5,180	0.62	\$ 112.62
73564	RAD EXAM, KNEE; COMP, 4+ VIEWS	4	2.20	\$ 403	0.55	\$ 100.72
71110	RAD EXM,RIBS,BILATERAL;3 VIEWS	26	14.29	\$ 2,617	0.55	\$ 100.64
70220	RAD EXM,SIN,PARANAS,COMP,MIN 3	6	3.12	\$ 571	0.52	\$ 95.22
71130	RAD EXM;STERNOCLAVICULAR,MIN 3	2	1.00	\$ 183	0.50	\$ 91.56
73050	X-RAY EXAM OF SHOULDERS	6	2.97	\$ 544	0.50	\$ 90.64
73110	RAD EXM,WRIST;COMP,MIN 3 VIEWS	118	57.39	\$ 10,509	0.49	\$ 89.06
72100	RAD EXM,SPINE,LUMBO; 2/3 VIEWS	398	193.03	\$ 35,348	0.49	\$ 88.82
72072	RAD EXM,SPINE;THORACIC,3 VIEWS	38	18.10	\$ 3,315	0.48	\$ 87.23
72070	RAD EXM,SPINE;THORACIC,2 VIEWS	66	31.02	\$ 5,681	0.47	\$ 86.07
72040	RADLOG EXM,SPIN,CERV;2/3 VIEWS	2	0.92	\$ 168	0.46	\$ 84.24
70160	RAD EXM,NAS BNE,COM,MIN,3 VIEW	8	3.61	\$ 661	0.45	\$ 82.63
73140	RAD EXAM,FINGER(S),MIN 2 VIEWS	46	20.31	\$ 3,719	0.44	\$ 80.85
72170	RAD EXAM, PELVIS; 1 OR 2 VIEWS	10	4.40	\$ 806	0.44	\$ 80.58
73130	RAD EXAM, HAND; MIN OF 3 VIEWS	194	84.52	\$ 15,478	0.44	\$ 79.78
73610	RAD EXAM,ANK;COMP,MIN 3 VIEWS	178	77.43	\$ 14,179	0.44	\$ 79.66

¹ Source: M2 Radiology Detail, includes both Technical and Professional services.

Dover – Purchased Care Radiology¹ Services by Product Line² and Enrollment Category

0036 AF-C-436th MEDGRP-DOVER PARENT PRISM AREA							
FY 2017 RADIOLOGY SERVICES							
Product Line	Prime - Site	Reliant	Prime - Other	Plus	TFL	Not Enrolled	Total
Inpatient	455	45	99		2,084	161	2,844
Anesth	28		2		16	3	49
ENT					1	1	2
ER	1,742	21	291		3,290	799	6,143
Facility	4,560	23	843	1	4,678	1,298	11,403
IMSub	315	1	69		304	81	770
MH	1				32	3	36
OBGYN	1,550	14	44		1	209	1,818
Optom	49		10		145	23	227
Ortho	615		138		414	195	1,362
PC	2,463	10	412	1	3,208	633	6,727
Path	4				1		5
Rad	5,634	36	984		3,827	1,300	11,781
Surg	23		5		15	4	47
SurgSub	56		10		43	12	121
Other	12		3		11	6	32
None	2				6		8
Total	17,509	150	2,910	2	18,076	4,728	43,375

0036 AF-C-436th MEDGRP-DOVER PARENT PRISM AREA							
FY 2018 RADIOLOGY SERVICES							
Product Line	Prime - Site	Reliant	Prime - Other	Plus	TFL	Not Enrolled	Total
Inpatient	664		106		1,981	195	2,946
Anesth	84		4		24	6	118
ENT	2				4	2	8
ER	3,318	31	481	6	3,467	743	8,046
Facility	4,201	2	769	4	4,907	1,317	11,200
IMSub	402	1	70		370	124	967
MH	3		1		21	6	31
OBGYN	734		38		2	120	894
Optom	36		12		116	20	184
Ortho	629		124		1,113	228	2,094
PC	1,473	10	198		1,013	330	3,024
Path	11		6		8	5	30
Rad	4,943	3	987	5	5,544	1,310	12,792
Surg	25		4		30	6	65
SurgSub	84		19		185	16	304
Other	33		5		18	9	65
None	3				15	2	20
Total	16,645	47	2,824	15	18,818	4,439	42,788

¹ Source: M2 TED Non-Institutional Detail (Procedure Code = 7****), includes both Technical and Professional services. Based on "Parent" PRISM.

Prime-Site defined based on Enrollment Site Parent.

² Inpatient defined as Service Type = I, otherwise based on standard Product Line (derived from Provider Specialty).

Dover – FY18 Purchased Care Top 20 Radiology Procedures¹ by Number of Services and Paid/Svc

0036 AF-C-436th MEDGRP-DOVER PARENT PRISM AREA						
TOP 20 RADIOLOGY PROCEDURES BY VOLUME						
Procedure Code	Description	FY 2018				
		Number of Services	Enhanced Total RVU	Amount Paid ²	Avg RVU	Paid ² / Svc
71046	RADIOLOGIC EXAM,CHEST;2 VIEWS	2,522	807.30	\$ 57,721	0.32	\$ 22.89
71045	RADIOLOG EXM,CHEST;SINGLE VIEW	2,307	519.74	\$ 29,976	0.23	\$ 12.99
70450	CT HEAD/BRAIN W/O CONTRST MATRL	1,661	1,926.86	\$ 87,464	1.16	\$ 52.66
74177	CT,ABDOM & PELV;W CONTRAST MAT	1,592	4,230.45	\$ 208,819	2.66	\$ 131.17
77067	SCRN MAMMOG,BILAT,CAD WHN PERF	1,285	2,507.40	\$ 90,181	1.95	\$ 70.18
73030	RAD EXM,SHLDR;COMP,MIN 2 VIEW	894	451.92	\$ 16,234	0.51	\$ 18.16
76770	US,RETROPRT,R TME W IMG DC;CMP	894	1,290.09	\$ 38,492	1.44	\$ 43.06
73630	RAD EXM,FOOT;COMP, MIN 3 VIEWS	874	450.85	\$ 18,593	0.52	\$ 21.27
74176	CT,ABDOM & PELV;WO CONTRAS MAT	814	1,732.31	\$ 76,502	2.13	\$ 93.98
71020	RAD EXM,CHEST,2,FRONTAL & LAT;	785	226.81	\$ 17,780	0.29	\$ 22.65
71010	CHEST X-RAY	780	182.35	\$ 9,692	0.23	\$ 12.43
73564	RAD EXAM, KNEE; COMP, 4+ VIEWS	733	495.37	\$ 19,140	0.68	\$ 26.11
71250	CT THORAX WO CONTRAST MATERIAL	689	1,450.66	\$ 32,441	2.11	\$ 47.08
76642	ULTRASND,BREAST,UNILAT;LIMITED	681	500.58	\$ 27,119	0.74	\$ 39.82
73562	RADIOLOGIC EXAM, KNEE; 3 VIEWS	669	504.81	\$ 11,860	0.75	\$ 17.73
76830	US EXAM, TRANSVAGINAL	658	727.71	\$ 59,187	1.11	\$ 89.95
76856	US,PELV,REAL TME W IMG DOC;CMP	658	520.42	\$ 54,916	0.79	\$ 83.46
73130	RAD EXAM, HAND; MIN OF 3 VIEWS	639	256.80	\$ 13,296	0.40	\$ 20.81
72148	MAGNETIC IMAGE, LUMBAR SPINE	638	2,530.31	\$ 87,013	3.97	\$ 136.38
73502	RAD EXAM,HIP,UNILAT;2-3 VIEWS	638	421.15	\$ 9,295	0.66	\$ 14.57

0036 AF-C-436th MEDGRP-DOVER PARENT PRISM AREA						
TOP 20 RADIOLOGY PROCEDURES BY PAID/SVC						
Procedure Code	Description	FY 2018				
		Number of Services	Enhanced Total RVU	Amount Paid ²	Avg RVU	Paid ² / Svc
77372	SRS,CRN LS,1SESS;LIN ACCEL BSD	2	30.91	\$ 10,092	15.46	\$ 5,045.81
77523	PROTON TX DEL;INTERMEDIATE	44	261.90	\$ 84,056	5.95	\$ 1,910.37
78266	GAS EMP IMG;SM BOWEL&COLN,MULT	2	15.18	\$ 2,013	7.59	\$ 1,006.71
78451	MYOCARD PERF IMAG,SPECT;SINGLE	8	19.76	\$ 6,745	2.47	\$ 843.15
77373	STEREOTACTIC RAD TRMT DELIVERY	18	589.80	\$ 14,447	32.77	\$ 802.60
78608	BRAIN IMAGING (PET)	4	18.15	\$ 2,937	4.54	\$ 734.21
77301	RADIOTHERAPY DOS PLAN, IMRT	39	903.22	\$ 23,103	23.16	\$ 592.39
73085	CONTRAST X-RAY OF ELBOW	1	0.00	\$ 552	0.00	\$ 552.01
78804	TUMOR IMAGING, WHOLE BODY	7	48.07	\$ 3,631	6.87	\$ 518.75
77295	3-D RADIOTHER PLN,DOS-VOL HIST	38	215.88	\$ 19,426	5.68	\$ 511.21
77432	STEREOTACTIC RADIATION TRMT	1	11.29	\$ 466	11.29	\$ 465.87
78258	ESOPHAGEAL MOTILITY STUDY	2	7.52	\$ 916	3.76	\$ 458.04
73222	MRI JOINT UPR EXTREM W/ DYE	44	255.90	\$ 18,433	5.82	\$ 418.93
73722	MAG RES IMG,ANY JT,LW EXT;W CM	16	94.48	\$ 6,685	5.91	\$ 417.83
78806	RADIOPHARM LOCALZTN,WHOLE BODY	3	2.30	\$ 1,253	0.77	\$ 417.74
75561	CARD MRI WO CONT,FOL CONT& SEQ	15	79.36	\$ 6,065	5.29	\$ 404.34
73723	MAG RES IM,ANY JT,LW EXT;WO CM	15	117.00	\$ 5,912	7.80	\$ 394.13
77385	IMRT DELIVERY,GUID&TRAC;SIMPLE	261	2,174.63	\$ 94,701	8.33	\$ 362.84
72147	MAGNETIC IMAGE, CHEST SPINE	3	27.12	\$ 1,063	9.04	\$ 354.28
73220	MRI UPRR EXTREMITY W/O&W DYE	15	106.92	\$ 5,243	7.13	\$ 349.56

¹ Source: M2 TED Non-Institutional Detail (Procedure Code = 7****), includes both Technical and Professional services. Based on "Parent" PRISM.

² Purchased Care includes 13% increase for overhead burdening.

Laboratory

Dover – Direct Care Laboratory¹ Services by Ordering Product Line and Enrollment Category

0036 AF-C-436th MEDGRP-DOVER							
FY 2017 LABORATORY SERVICES							
Ordering Product Line	Prime - Site	Reliant	Prime - Other	Plus	TFL	Not Enrolled	Total
Dental	3		1				4
Ancillary						605	605
Special Programs	6,589	129	897	14	3,434	3,157	14,220
Mental Health	931	17				30	978
OB/GYN	2,744	70	17			14	2,845
Optometry	7	6					13
Orthopedics	81						81
Primary Care	27,682	300	205	3	34	1,281	29,505
TOTAL	38,037	522	1,120	17	3,468	5,087	48,251

0036 AF-C-436th MEDGRP-DOVER							
FY 2018 LABORATORY SERVICES							
Ordering Product Line	Prime - Site	Reliant	Prime - Other	Plus	TFL	Not Enrolled	Total
Dental	4	1					5
Ancillary						853	853
Special Programs	6,794	256	978	8	3,397	2,968	14,401
Mental Health	1,383	29	12				1,451
OB/GYN	3,107	55	34				3,217
Optometry	13						13
Orthopedics	50						50
Primary Care	24,807	230	323		34	584	25,978
TOTAL	36,158	571	1,347	8	3,431	4,453	45,968

¹ Source: M2 Laboratory Detail, includes both Technical and Professional services. Prime-Site defined as Enrollment Site Parent equal to Tmt Parent. Ordering Product Line based on Ordering MEPRS Code.

Dover – FY18 Direct Care Top 20 Laboratory Procedures¹ by Number of Services and Cost/Svc

0036 AF-C-436th MEDGRP-DOVER						
TOP 20 LABORATORY PROCEDURES BY VOLUME						
Procedure Code	Description	FY 2018				
		# of Svcs	Total RVU	Full Cost	Avg RVU	Cost / Svc
86701	HIV-1	3,818	190.90	\$ 11,110	0.05	\$ 2.91
80053	COMPREHENSIVE METABOLIC PANEL	3,600	6,290.26	\$ 366,275	1.75	\$ 101.74
85025	COMPLETE CBC W/AUTO DIFF WBC	3,056	977.92	\$ 56,933	0.32	\$ 18.63
80061	LIPID PANEL	3,034	3,073.78	\$ 178,984	1.01	\$ 58.99
99001	HANDL,SPECIM,TRANSF,PAT TO LAB	2,711	0.00	\$ 0	0.00	\$ 0.00
83036	HEMOGLOBIN; GLYCOSYLATED (A1C)	2,146	699.62	\$ 40,748	0.33	\$ 18.99
84443	ASSAY THYROID STIM HORMONE	2,113	1,500.23	\$ 87,351	0.71	\$ 41.34
82044	ALBUM;URIN(MICROALB),SEMIQUANT	1,179	200.43	\$ 11,672	0.17	\$ 9.90
87485	CHYLMD PNEUM, DNA, DIR PROBE	1,095	54.75	\$ 3,186	0.05	\$ 2.91
84703	CHORIONIC GONADOTROPIN ASSAY	1,013	271.03	\$ 15,783	0.27	\$ 15.58
84439	ASSAY OF FREE THYROXINE	1,008	319.65	\$ 18,613	0.32	\$ 18.46
82306	VITAMIN D, 25 HYDROXY	958	47.90	\$ 2,788	0.05	\$ 2.91
81003	URINALYSIS, AUTO, W/O SCOPE	930	77.11	\$ 4,491	0.08	\$ 4.83
80048	BASIC METABOL PANEL (CA,TOTAL)	907	897.93	\$ 52,289	0.99	\$ 57.65
86803	HEPATITIS C AB TEST	614	30.70	\$ 1,787	0.05	\$ 2.91
87430	INF ANT DET; STREPTOCOCC,GRP A	559	261.29	\$ 15,216	0.47	\$ 27.22
84153	ASSAY OF PSA, TOTAL	492	318.85	\$ 18,565	0.65	\$ 37.73
86592	SYPHILIS TEST NON-TREP QUAL	476	89.74	\$ 5,224	0.19	\$ 10.97
81015	MICROSCOPIC EXAM OF URINE	468	49.56	\$ 2,885	0.11	\$ 6.17
88141	CYTP,CX/VAGNL,REQ INTERP PHYS	467	23.35	\$ 1,359	0.05	\$ 2.91

0036 AF-C-436th MEDGRP-DOVER						
TOP 20 LABORATORY PROCEDURES BY COST/SVC						
Procedure Code	Description	FY 2018				
		# of Svcs	Total RVU	Full Cost	Avg RVU	Cost / Svc
80053	COMPREHENSIVE METABOLIC PANEL	3,600	6,290.26	\$ 366,275	1.75	\$ 101.74
80069	RENAL FUNCTION PANEL	174	215.76	\$ 12,565	1.24	\$ 72.21
80061	LIPID PANEL	3,034	3,073.78	\$ 178,984	1.01	\$ 58.99
80048	BASIC METABOL PANEL (CA,TOTAL)	907	897.93	\$ 52,289	0.99	\$ 57.65
80076	HEPATIC FUNCTION PANEL	431	415.99	\$ 24,222	0.97	\$ 56.20
84443	ASSAY THYROID STIM HORMONE	2,113	1,500.23	\$ 87,351	0.71	\$ 41.34
80320	ALCOHOLS	204	137.60	\$ 8,012	0.67	\$ 39.27
83631	LACTOFERRIN, FECAL; QUAN	2	1.34	\$ 78	0.67	\$ 39.01
84154	ASSAY OF PSA, FREE	80	51.94	\$ 3,024	0.65	\$ 37.80
84153	ASSAY OF PSA, TOTAL	492	318.85	\$ 18,565	0.65	\$ 37.73
80051	ELECTROLYTE PANEL	2	1.09	\$ 63	0.55	\$ 31.74
84702	CHORIONIC GONADOTROPIN TEST	83	44.84	\$ 2,611	0.54	\$ 31.46
80156	CARBAMAZEPINE; TOTAL	25	13.16	\$ 766	0.53	\$ 30.66
80162	DIGOXIN; TOTAL	22	10.67	\$ 621	0.49	\$ 28.25
80164	VALPROIC ACID; TOTAL	28	13.54	\$ 789	0.48	\$ 28.16
80185	ASSAY OF PHENYTOIN, TOTAL	22	10.56	\$ 615	0.48	\$ 27.95
87430	INF ANT DET; STREPTOCOCC,GRP A	559	261.29	\$ 15,216	0.47	\$ 27.22
87279	INF AG AN,IMMU;PARAINFLUEN VIR	278	127.88	\$ 7,448	0.46	\$ 26.79
82951	GLUCOSE TOLERANCE TEST (GTT)	4	1.81	\$ 105	0.45	\$ 26.35
89321	SEMEN ANAL;PRES & MOTIL SPERM	5	2.15	\$ 125	0.43	\$ 25.04

¹ Source: M2 Laboratory Detail, includes both Technical and Professional services.

Dover – Purchased Care Laboratory¹ Services by Product Line² and Enrollment Category

0036 AF-C-436th MEDGRP-DOVER PARENT PRISM AREA							
FY 2017 LABORATORY SERVICES							
Product Line	Prime - Site	Reliant	Prime - Other	Plus	TFL	Not Enrolled	Total
Inpatient	307	1	51		429	46	834
Anesth	3		1		8	3	15
Derm	150	1	45		179	46	421
ER	604	22	80		323	166	1,195
Facility	3,241	5	1,520		1,027	2,445	8,238
IMSub	425		59	2	981	182	1,649
OBGYN	1,675	1	90		23	252	2,041
Optom					11	2	13
Ortho	3				1	8	12
PC	1,859	22	521		2,674	1,108	6,184
Path	2,356		327		1,117	453	4,253
Rad	2				2	6	10
Surg	3		1		6		10
SurgSub	1,147		163		435	244	1,989
Other					6		6
None	13,893	69	3,973	4	1,478	8,242	27,659
Total	25,668	121	6,831	6	8,700	13,203	54,529

0036 AF-C-436th MEDGRP-DOVER PARENT PRISM AREA							
FY 2018 LABORATORY SERVICES							
Product Line	Prime - Site	Reliant	Prime - Other	Plus	TFL	Not Enrolled	Total
Inpatient	440		91		538	56	1,125
Anesth	2		3		3	5	13
Derm	141	6	22		216	40	425
ER	481		86		346	125	1,038
Facility	4,109	3	1,824		1,100	2,375	9,411
IMSub	655		153	2	1,249	107	2,166
MH					1		1
OBGYN	685	3	47		31	203	969
Optom	24		12		20	6	62
Ortho	3		1			9	13
PC	2,505	17	421		2,270	1,031	6,244
Path	2,653	5	407		1,894	513	5,472
Rad	1				9	9	19
Surg	31				49		80
SurgSub	951	3	176		857	173	2,160
Other			1		5		6
None	12,518	43	3,475	1	1,530	7,745	25,312
Total	25,199	80	6,719	3	10,118	12,397	54,516

¹ Source: M2 TED Non-Institutional Detail (Procedure Code = 8****), includes both Technical and Professional services. Based on "Parent" PRISM.

Prime-Site defined based on Enrollment Site Parent.

² Inpatient defined as Service Type = I, otherwise based on standard Product Line (derived from Provider Specialty).

Dover – FY18 Purchased Care Top 20 Laboratory Procedures¹ by Number of Services and Paid/Svc

0036 AF-C-436th MEDGRP-DOVER PARENT PRISM AREA						
TOP 20 LABORATORY PROCEDURES BY VOLUME						
Procedure Code	Description	FY 2018				
		Number of Services	Enhanced Total RVU	Amount Paid ²	Avg RVU	Paid ² / Svc
88305	LEV IV-SRG PATH,GROS&MICRO EXM	5,492	9,082.14	\$ 217,871	1.65	\$ 39.67
80053	COMPREHENSIVE METABOLIC PANEL	2,114	782.88	\$ 22,034	0.37	\$ 10.42
85025	COMPLETE CBC W/AUTO DIFF WBC	1,991	552.78	\$ 16,619	0.28	\$ 8.35
85610	PROTHROMBIN TIME	1,862	251.18	\$ 2,234	0.13	\$ 1.20
81003	URINALYSIS, AUTO, W/O SCOPE	1,741	143.45	\$ 4,692	0.08	\$ 2.70
80061	LIPID PANEL	1,711	908.26	\$ 19,109	0.53	\$ 11.17
87798	INFECT AGT;AMPLFD PRB TECH,EA	1,664	2,043.28	\$ 72,429	1.23	\$ 43.53
86003	ALLERG SPEC IGE;QUANT/SEMI,EA	1,503	274.94	\$ 7,160	0.18	\$ 4.76
82570	ASSAY OF URINE CREATININE	1,079	199.18	\$ 6,515	0.18	\$ 6.04
87880	STREP A ASSAY W/OPTIC	1,054	484.84	\$ 16,333	0.46	\$ 15.50
84443	ASSAY THYROID STIM HORMONE	989	589.28	\$ 17,146	0.60	\$ 17.34
87086	CULT,BACT;QUANTIT COLONY COUNT	951	273.66	\$ 9,087	0.29	\$ 9.55
83036	HEMOGLOBIN; GLYCOSYLATED (A1C)	926	313.94	\$ 7,812	0.34	\$ 8.44
88341	IMMUNOHIS/CYTOCH;EA ADD AB STN	901	1,320.08	\$ 26,308	1.47	\$ 29.20
88342	IMMUNOHIST/CYT;INIT SNG AB STN	892	1,857.46	\$ 42,951	2.08	\$ 48.15
88313	SPEC STN,INT&RPT;GRP II,ALL OTH	882	1,039.74	\$ 21,966	1.18	\$ 24.90
87591	N.GONORRHOEAE, DNA, AMP PROB	821	1,015.86	\$ 35,879	1.24	\$ 43.70
87491	CHYLM D TRACH, DNA, AMP PROBE	818	1,012.12	\$ 35,781	1.24	\$ 43.74
88312	SPEC STN,INT&RPT;GRP I,MICROOR	780	1,984.58	\$ 50,831	2.54	\$ 65.17
81002	URINALYSIS NONAUTO W/O SCOPE	710	71.00	\$ 1,273	0.10	\$ 1.79

0036 AF-C-436th MEDGRP-DOVER PARENT PRISM AREA						
TOP 20 LABORATORY PROCEDURES BY PAID/SVC						
Procedure Code	Description	FY 2018				
		Number of Services	Enhanced Total RVU	Amount Paid ²	Avg RVU	Paid ² / Svc
81415	EXOME; SEQUENCE ANALYSIS	2	199.98	\$ 13,773	99.99	\$ 6,886.58
81416	EXOME;SEQ ANAL,EA COMPARAT EXO	2	199.98	\$ 11,300	99.99	\$ 5,650.00
81519	ONC(BRST),MRNA,RT-PCR,21 GENES	1	99.99	\$ 4,247	99.99	\$ 4,247.47
81229	CYTO CON MICROAR ANAL;COPY&SNP	6	96.66	\$ 13,846	16.11	\$ 2,307.75
81408	MOLECULAR PATHOLOGY PROC, LV 9	23	1,277.88	\$ 51,320	55.56	\$ 2,231.31
81211	BRCA1,2 GEN ANAL;FUL,COM,BRCA1	4	266.20	\$ 7,598	66.55	\$ 1,899.61
81228	CYTO CON MICROAR ANAL;COPY NUM	2	25.00	\$ 2,826	12.50	\$ 1,412.80
81162	BRCA1,BRCA2 GEN ANAL;FULL&DUP	2	125.16	\$ 2,547	62.58	\$ 1,273.70
81201	APC GENE ANAL;FULL GENE SEQ	1	21.67	\$ 1,017	21.67	\$ 1,017.00
81220	CFTR GENE ANAL;COMMON VARIANTS	48	401.96	\$ 44,038	8.37	\$ 917.46
81405	MOLECULAR PATHOLOGY PROC,LEV 6	15	83.70	\$ 13,433	5.58	\$ 895.55
81479	UNLISTED MOLECULAR PATH PROC	19	0.00	\$ 11,953	0.00	\$ 629.11
81406	MOLECULAR PATHOLOGY PROC,LEV 7	37	259.38	\$ 21,979	7.01	\$ 594.02
81420	FET CHR ANEUP GEN SEQ,13,18,21	27	574.28	\$ 15,917	21.27	\$ 589.51
81528	ONC(COLOREC),QUANT,10 DNA MARK	14	198.38	\$ 7,944	14.17	\$ 567.45
87507	INF AGNT,DNA/RNA;GI,12-25 TARG	12	176.40	\$ 6,649	14.70	\$ 554.04
81292	MLH1 GENE ANAL; FULL SEQ ANAL	1	18.76	\$ 509	18.76	\$ 509.12
81238	F9, FULL GENE SEQUENCE	1	16.67	\$ 503	16.67	\$ 503.21
81213	BRCA1,2 GEN ANAL;UNCOM DUP/DEL	4	61.44	\$ 1,754	15.36	\$ 438.46
87633	INF AGNT DET,NA;RESP,12-25 TAR	14	203.34	\$ 5,803	14.52	\$ 414.53

¹ Source: M2 TED Non-Institutional Detail (Procedure Code = 8****), includes both Technical and Professional services. Based on "Parent" PRISM.

² Purchased Care includes 13% increase for overhead burdening.

Staffing

Dover – Staffing¹

All MEPRS Codes, No Limitation on Skill Type

Assigned FTEs

Tmt Parent DMIS ID	Tmt DMIS ID	Tmt DMIS ID Name	2017					2018						
			CIV	CON	MIL	OTH	TOTAL	CIV	CON	MIL	OTH	TOTAL		
0036	0036	AF-C-436th MEDGRP-DOVER	39.6		167.2			206.8	39.8		159.6			199.4
	1785	AF-D-436th DENTAL SQ-DOVER	2.5		24.6			27.0	2.0		26.6			28.6
0036 Total			42.1	0.0	191.8	0.0	233.9	41.8	0.0	186.3	0.0	0.0	228.0	

Available FTEs

Tmt Parent DMIS ID	Tmt DMIS ID	Tmt DMIS ID Name	2017					2018				
			CIV	CON	MIL	OTH	TOTAL	CIV	CON	MIL	OTH	TOTAL
0036	0036	AF-C-436th MEDGRP-DOVER	32.1	48.7	159.2	2.8	242.7	32.3	45.8	149.1	2.5	229.7
	1785	AF-D-436th DENTAL SQ-DOVER	1.7	4.9	14.7	3.7	25.1	1.5	4.5	16.0	3.3	25.4
0036 Total			33.8	53.5	173.9	6.5	267.8	33.8	50.3	165.1	5.8	255.0

¹ Source: M2 MEPRS Personnel Detail. Based on Parent DMIS ID, information listed by Child DMIS ID.

Dover – Staffing (Available FTEs)¹

MEPRS B

0036 AF-C-436th MEDGRP-DOVER											
Skill Type	Skill Type and Suffix Desc	2017					2018				
		CIV	CON	MIL	OTH	TOTAL	CIV	CON	MIL	OTH	TOTAL
1P	PHYSICIAN		0.4	6.7		7.1		0.9	5.8		6.8
2N	NURSE PRACTITIONER			2.6		2.6			2.3		2.3
2P	PHYSICIAN ASSISTANT		0.8	2.9		3.8		1.1	3.4		4.6
2Z	ALL OTHERS IN SKILL TYPE 2	0.3	2.0	4.1		6.4	0.0	1.8	5.7	0.1	7.7
3R	REGISTERED NURSE	1.6	4.4	2.2		8.2	1.8	5.3	1.7		8.9
3Z	ALL OTHERS IN SKILL TYPE 3			0.0		0.0					0.0
4Z	ALL OTHERS IN SKILL TYPE 4	1.0	1.8	28.2	0.6	31.6	1.6	1.7	25.2	0.4	29.0
5A	ADMINISTRATORS	0.5				0.5	0.1				0.1
5C	CLERICAL		0.1	0.5		0.6			0.6		0.6
5Z	ALL OTHERS IN SKILL TYPE 5	3.3				3.3	2.7		0.9		3.5
Grand Total		6.7	9.6	47.2	0.6	64.1	6.2	11.0	45.7	0.6	63.4

¹ Source: M2 MEPRS Personnel Detail. Based on Child DMIS ID.

Dover – Staffing (Available FTEs)¹

All MEPRS

0036 AF-C-436th MEDGRP-DOVER											
Skill Type	Skill Type and Suffix Desc	2017					2018				
		CIV	CON	MIL	OTH	TOTAL	CIV	CON	MIL	OTH	TOTAL
1D	DENTIST			1.5		1.5			1.6		1.6
1P	PHYSICIAN		0.5	11.0		11.5		1.0	10.3		11.3
2A	NURSE ANESTHETIST			0.8		0.8					0.0
2N	NURSE PRACTITIONER			3.3		3.3			2.8		2.8
2P	PHYSICIAN ASSISTANT		1.0	3.8		4.8		1.2	4.1		5.3
2Z	ALL OTHERS IN SKILL TYPE 2	2.7	6.2	8.3		17.2	2.2	5.3	10.2	0.1	17.8
3R	REGISTERED NURSE	3.8	9.1	4.3		17.1	4.4	8.3	3.4		16.1
3Z	ALL OTHERS IN SKILL TYPE 3			1.9		1.9			1.3		1.3
4Z	ALL OTHERS IN SKILL TYPE 4	4.3	5.1	71.7	2.8	83.9	5.0	3.5	67.4	2.3	78.2
5A	ADMINISTRATORS	2.3	0.2	8.5		10.9	3.5		8.8		12.3
5C	CLERICAL	4.2	24.4	13.6		42.2	4.8	24.8	12.9		42.6
5L	LOGISTICS	1.2	0.3	3.8		5.3	1.1		4.2		5.3
5W	STUDENT-NON GME/GDE			0.4		0.4			0.4		0.4
5Z	ALL OTHERS IN SKILL TYPE 5	13.6	1.9	26.4		42.0	11.4	1.7	21.6		34.7
Grand Total		32.1	48.7	159.2	2.8	242.7	32.3	45.8	149.1	2.5	229.7

1785 AF-D-436th DENTAL SQ-DOVER											
Skill Type	Skill Type and Suffix Desc	2017					2018				
		CIV	CON	MIL	OTH	TOTAL	CIV	CON	MIL	OTH	TOTAL
1D	DENTIST			3.5		3.5			4.0		4.0
4Z	ALL OTHERS IN SKILL TYPE 4	1.6	4.9	11.3	3.7	21.5	1.5	4.5	12.0	3.3	21.4
5C	CLERICAL					0.0			0.0		0.0
5Z	ALL OTHERS IN SKILL TYPE 5	0.1				0.1					0.0
Grand Total		1.7	4.9	14.7	3.7	25.1	1.5	4.5	16.0	3.3	25.4

¹ Source: M2 MEPRS Personnel Detail. Based on Child DMIS ID.

Dover – Skill Type 1P (Physician) by DoD Occupation Code¹ (Available FTEs)

0036 AF-C-436th MEDGRP-DOVER											
DoD Occ Code		2017					2018				
		CIV	CON	MIL	OTH	TOTAL	CIV	CON	MIL	OTH	TOTAL
260101	AVIATION/AEROSPACE MEDICINE, RESIDENCY TRAINED AER			0.3		0.3			0.0		0.0
260102	ALLERGY/IMMUNOLOGY					0.0			0.0		0.0
260109	GENERAL MEDICINE					0.0					0.0
260111	FAMILY PRACTICE		0.4	2.5		2.9		0.8	2.2		2.9
260121	PEDIATRICS, GENERAL			1.6		1.6			1.5		1.5
260125	PSYCHIATRY			0.8		0.8			0.8		0.8
260132	ORTHOPEDIC SURGERY			0.0		0.0					0.0
260151	AVIATION/AEROSPACE MEDICINE, RESIDENCY TRAINED OTH			0.2		0.2		0.2	0.4		0.5
260152	AVIATION/AEROSPACE MEDICINE NON-RESIDENCY TRAINED			1.4		1.4			0.9		0.9
TOTAL		0.0	0.4	6.7	0.0	7.1	0.0	0.9	5.8	0.0	6.8

MEPRS B
Only

¹ Source: M2 MEPRS Personnel Detail. Based on Child DMIS ID.

Eligible Population and Enrollment

Dover – Eligibles and Enrollees¹ by PRISM and Enrollment Site (Child)

PRISM (for Elig) / Enrollment Site (for Enr)		FY	Eligibles					Prime and Plus Enrolled				
			ADFM	RET	OTHER ²	AD	TOTAL	ADFM	RET	OTHER ²	AD	TOTAL
0036	AF-C-436th MEDGRP-DOVER	2014	4,977	4,883	7,604	3,840	21,303	3,987	1,422	2,114	3,916	11,439
0036	AF-C-436th MEDGRP-DOVER	2015	4,521	4,931	7,776	3,571	20,799	3,633	1,456	2,194	3,611	10,894
0036	AF-C-436th MEDGRP-DOVER	2016	4,518	4,935	7,672	3,507	20,632	3,630	1,530	2,216	3,572	10,948
0036	AF-C-436th MEDGRP-DOVER	2017	4,504	4,936	7,566	3,589	20,596	3,626	1,617	2,313	3,616	11,173
0036	AF-C-436th MEDGRP-DOVER	2018	4,524	4,884	7,576	3,633	20,617	3,657	1,551	2,400	3,596	11,204

¹ Source: Eligibles = M2 DEERS Person Detail; Enrollees = M2 TRICARE Relationship Detail. Eligibles based on PRISM Area ID. Enrollees based on Enrollment Site and ACV Group = Prime or Plus.

² Includes FM of Retired, Survivors, Other, Unknown, Inactive Guard/Reserve, FM of Inactive Guard/Reserve

Dover – Eligibles¹ by PRISM Area ID

0036 AF-C-436th MEDGRP-DOVER										
Gender by Age Group										
Gender	FY	0-4	5-14	15-17	18-24	25-34	35-44	45-64	65+	Total
Female	2014	671	1,099	358	1,149	1,302	859	2,566	2,233	10,238
	2015	630	1,077	339	1,088	1,247	844	2,488	2,304	10,016
	2016	645	1,074	335	1,021	1,256	835	2,451	2,350	9,966
	2017	637	1,066	325	1,004	1,251	858	2,381	2,398	9,921
	2018	639	1,070	323	1,013	1,276	842	2,364	2,434	9,960
Male	2014	690	1,123	372	1,724	1,717	880	2,470	2,089	11,065
	2015	654	1,070	362	1,622	1,644	877	2,400	2,154	10,782
	2016	650	1,080	337	1,523	1,659	861	2,357	2,201	10,666
	2017	650	1,079	323	1,525	1,685	871	2,329	2,213	10,674
	2018	641	1,073	311	1,550	1,692	873	2,277	2,240	10,657
Total	2014	1,361	2,223	730	2,873	3,020	1,739	5,036	4,322	21,303
	2015	1,283	2,146	702	2,709	2,891	1,722	4,888	4,458	20,799
	2016	1,295	2,154	671	2,544	2,915	1,696	4,807	4,551	20,632
	2017	1,288	2,145	648	2,529	2,936	1,729	4,710	4,611	20,596
	2018	1,280	2,142	634	2,563	2,967	1,715	4,642	4,674	20,617

0036 AF-C-436th MEDGRP-DOVER						
Gender by Ben Cat Common						
Gender	FY	ADFM	RET	OTHER	AD	Total
Female	2014	3,248	347	6,030	613	10,238
	2015	2,950	370	6,121	575	10,016
	2016	2,957	390	6,063	556	9,966
	2017	2,933	422	5,995	572	9,921
	2018	2,958	430	5,957	615	9,960
Male	2014	1,729	4,537	1,573	3,227	11,065
	2015	1,571	4,561	1,655	2,995	10,782
	2016	1,561	4,545	1,609	2,951	10,666
	2017	1,571	4,515	1,572	3,017	10,674
	2018	1,565	4,454	1,619	3,019	10,657
Total	2014	4,977	4,883	7,604	3,840	21,303
	2015	4,521	4,931	7,776	3,571	20,799
	2016	4,518	4,935	7,672	3,507	20,632
	2017	4,504	4,936	7,566	3,589	20,596
	2018	4,524	4,884	7,576	3,633	20,617

¹ Source: M2 DEERS Person Detail

Update History

- ❑ Version 1: New portfolio template. Direct Care costs for FY13 are based on FY13 MEPRS expenses; FY14 is based on FY13 MEPRS with inflation factors applied. May 2015.
- ❑ Version 2: Updated FY14 data; added FY15 data; added Pharmacy, Radiology, and Laboratory data; added additional views of eligible data; added Ambulatory Surgery Top 20 Procedures. FY14 Direct Care Costs are based on FY14 MEPRS expenses; FY15 Direct Care Costs are based on FY14 MEPRS with inflation factors applied. March 2016.
- ❑ Version 3: Updated FY15 data; added FY16 data; added Appointment Data. FY15 Direct Care Costs are based on FY15 MEPRS expenses; FY16 Direct Care Costs are based on FY15 MEPRS with inflation factors applied. March 2017.
- ❑ Version 4: Updated FY16 data; added FY17 data. FY16 Direct Care Costs are based on FY16 MEPRS expenses; FY17 Direct Care Costs are based on FY16 MEPRS with inflation factors applied. March 2018.
- ❑ Version 5: Updated FY17 data; added FY18 data. FY17 Direct Care Costs are based on FY17 MEPRS expenses; FY18 Direct Care Costs are based on FY17 MEPRS with inflation factors applied. March 2019.