



45th MEDGRP-PATRICK Use Case Volume II

Table of Contents

Parts	Page
A. Data Call	3
B. Relevant Section 703 Report Detail	9
C. DHA TRICARE Health Plan Assessment	11
D. Independent Government Assessment (Network Insight)	16
E. P4I Measures	31
F. JOES-C 12-month Rolling Data	48
G. MTF Mission Brief	49
H. MTF Portfolio (Full)	64

Part A: Patrick AFB Data Call (1 of 6)

Installation

Installation Name	MTF DMIS ID	Affiliated Location Name	Installation Mission	Medical Units assigned to mission
Patrick AFB FL	0046	45 MDG	In flight emergency support	45 AMDS - Flight Med
			Bioenvironmental launch support	45 AMDS - Bioenvironmental
			Human Space Msn	45 MSS - Lab, Pharmacy, Logistics, BMET
			Dental readiness	45 AMDS - Dental clinic
			Public Health Emergency	45 AMDS - Public Health Emergency Officer, Public Health, Pharmacy
			Optometry readiness	45 AMDS - Optometry
			Vulnerability Assessments	45 AMDS - Public Health, Bioenv
			Health Promotions	45 AMDS - Public Health
			Emergency Management	45 AMDS - Flight Med, Bioenv
			Water Safety	45 AMDS - Bioenvironmental
			Occupational Health	45 AMDS - Public Health, Bio, Flight Med, SGP
			Ind'l/deployment Medical Readiness	45 MDG - Readiness, Lab, Pharmacy, Public Health, Immunizations, DHRA
			Food safety	45 AMDS - Public Health
			Drug Demand Reduction	45 MDSS - Lab Support
			Vaccination/Allergy	45 MDOS - Immunization/Allergy
			Behavioral/Mental Health	45 MDOS - Mental Health
Family Advocacy	45 MDOS - Family Advocacy			

Part A: Patrick AFB Data Call (2 of 6)

Installation

Installation Name	MTF DMIS ID	Affiliated Location Name	Installation Mission	Medical Units assigned to mission
Patrick AFB	0046	45 MDG	Physical Therapy	45 MDOS - Physical Therapy
	0046	45 MDG	Wing PAD (AED) Program	45 MDG - SGH/Logistics/BMET
	0046	45 MDG	45 OG/Det 3, Home Station Medical Response, Human Space Flight Support	45 MDSS - Logistics/BMET/Pharmacy/Lab
	0046	45 MDG	AFTAC	45 AMDS- Bio/Occ Health
	0046	45 MDG	Ascension Island Support	45 MDSS - Logistics/BMET
	0046	45 MDG	DDR, Aircraft Mishap, IMR, Human Space Flight Support	45 MDSS - Lab
	0046	45 MDG	Record accountability, PEBLO/MEB, Separation, Retirement, Patient Referral	45 MDSS - TOPA
	0046	45 MDG	Medical Manpower and Budget	45 MDSS - Resource Mgmt Office
	8750	45 MDG	Military Working Dogs	45 MDG - Veterinary Clinic
	0046	45 MDG	Medical Consultant	45 MDG/SGH
	0046	45 MDG	Special Needs/EFMP	45 MDG/EFMP
	0046	45 MDG	CPR / BLS Training	45 MDG/Education & Training
0046	45 MDG	Vet Clinic	45 MDSS - Logistics, Pharmacy, BMET	

Mission Readiness

MTF Name	MTF DMIS ID	Assigned Deployable Capability	Officer	Enlisted	ARC	Civ
45 MDG/Patrick AFB	0046	No medical specific UTCs*; does posture 9AFS2/First Sgt deployable UTC	46	119		68

Part A: Patrick AFB Data Call (4 of 6)

Medical Education and Training

Name of Program	Certified DOD New Starts	Number in Program	Program Length	Non-Military Users	Associated locations	Comments
Officer Education						N/A
Enlisted Medical Training						N/A
46N3 Sustainment Training	0	0	5-10 days	0	OVAMC, Viera, FL	2 students per week/month, 10 students max
46Y3A Initial Training	0	0	1-2 weeks	0	Naval Med Ctr, Portsmouth, VA	specifically 1 student by name only for colposcopy procedure training only
Eastern Florida State College Phlebotomist Training Program	0	0	qtrly	6-Apr	Eastern Florida State College	1-2 students perform hands-on skills in the MTF lab quarterly (6 weeks)

Medical Hold

# Medical hold beds	Line or medical funded?	How do you execute medical hold?	What is your definition of medical hold?
N/A	N/A	N/A	N/A

Part A: Patrick AFB Data Call (5 of 6)

Exceptional Family Member Program Summary Report

MTF Medical Specialties Supporting EFM

Type
ALLERGIST/IMMUNOLOGIST
RADIOLOGIST
PHARMACY
GYNECOLOGY
FAMILY PRACTICE
PEDIATRICS

Network Specialties Supporting EFM

Type	
AUDIOLOGIST	HEMATOLOGIST/ONCOLOGIST ADULT
BEHAVIOR ANALYST	HEMATOLOGIST/ONCOLOGIST PEDS
CARDIAC/THORACIC SURG	INFECTIOUS DISEASE
CARDIOLOGIST ADULT	INTERNIST
CARDIOLOGIST PEDS	NEPHROLOGIST ADULT
CLEFT PALETTE TEAM PEDS	NEPHROLOGIST PEDS
DERMATOLOGIST	NEUROLOGIST ADULT
DEVELOPMENTAL PEDS	NEUROLOGIST PEDS
DIETARY/NUTRITION SPEC	NEUROSURGEON
ENDOCRINOLOGIST ADULT	OCCUPATIONAL THERAPIST ADULT
FAMILY PRACTITIONER	OCCUPATIONAL THERAPIST PEDS
GASTROENTEROLOGIST ADULT	OPHTHALMOLOGIST ADULT
GASTROENTEROLOGIST PEDS	OPHTHALMOLOGIST PEDS
GENERAL SURGEON	OPHTHALMOLOGIST/ONCOLOGIST
GENETICS	ORAL SURGEON
GYNOCOLOGIST	ORTHOPEDIC SURGEON ADULT
GYNOCOLOGIST/ONCOLOGIST	ORTHOPDIC SURGEON PEDS

Part A: Patrick AFB Data Call (6 of 6)

Exceptional Family Member Program Summary Report

Network Specialties Supporting EFM

Number of EFM Supported

Type	
PAIN CLINIC	RADIATION ONCOLOGIST
PEDIATRICIAN	RESPIRATORY THERAPIST
PEDATRIC SURGEON	RHEUMATOLOGIST ADULT
PLASTIC SURGEON ADULT	RHEUMATOLOGIST PEDS
PLASTIC SURGEON PEDS	SOCIAL WORKERS
PSYCHIATRIST ADULT	SPEECH AND LANGUAGE PATHOLOGIST
PSYCHIATRIST PEDS	TRANSPLANT TEAM
PSYCHOLOGIST ADULT	UROLOGIST
PSYCHOLOGIST PEDS	UROLOGIST ONCOLOGIST
PULMONOLOGIST ADULT	VASCULAR SURGEON
PULMONOLOGIST PEDS	

246

Part B: Relevant Section 703 Report Detail (1 of 2)

Facility	Military Service	Product Line	Direct Care Full Cost	Direct Care SRVU (GPCI)	Direct Care Full Cost / SRVU	Direct Care SRVU Cost Ratio
AF-C-45th MED GRP-PATRICK	F	IMSUB	\$14,533	\$231	\$63	1.8
	F	MH	\$2,081,335	\$17,948	\$116	3.2
	F	OBGYN	\$458,776	\$4,609	\$100	2.8
	F	OPTOM	\$351,093	\$6,162	\$57	1.6
	F	ORTHO	\$603,195	\$9,550	\$63	1.8

Facility	Clinic Specialty	Encounters	Evaluated Visits	RVU	Estimated Network Ability to Absorb Workload
AF-C-45th MED GRP-PATRICK	PEDIATRIC CLINIC	13,338	7,647	17,164	Green
AF-C-45th MED GRP-PATRICK	BEHAVIORAL HEALTH CLINIC	9,308	3,472	17,788	Green
AF-C-45th MED GRP-PATRICK	PT/OT	4,509	1,779	8,881	Green
AF-C-45th MED GRP-PATRICK	OB/GYN CLINIC	2,130	1,339	3,744	Green

Part B: Relevant Section 703 Report Detail (2 of 2)

Markets	Inpatient		Ambulatory		Provider Workload Adjustment	
	Reported wRVU	Adjusted w/RVU	Reported wRVU	Adjusted w/RVU	Inpatient only	Combined Amb & Inpt
0001 – AHC FOX-REDSTONE ARSENAL	258	305	77,266	77,266	18%	0.1%
0003 – AHC LYSTER-RUCKER	344	395	135,471	135,471	15%	0.0%
0004 – AF-C-42 nd MED GRP-MAXWELL	207	233	83,520	83,520	13%	0.0%
0008 – AHC R W BLISS-HUACHUCA	506	572	101,421	101,421	13%	0.1%
0009 – AF-C-56 th MED GRP-LUKE	915	1,057	148,261	148,261	16%	0.1%
0010 – AF-C-355 th MED GRP-DM	598	688	122,605	122,605	15%	0.1%
0013 – AF-C-19 th MED GRP-LITTLE ROCK	556	637	72,066	72,066	15%	0.1%
0015 – AF-C-9 th MED GRP-BEALE	1,051	1,195	50,413	50,413	14%	0.3%
0018 – AF-C-30 th MED GRP-VANDENBERG	154	185	38,052	38,052	21%	0.1%
0019 – AF-C-412 th MED GRP-EDWARDS	85	101	21,343	21,343	18%	0.1%
0036 – AF-C-436 th MED GRP-DOVER	513	630	66,258	66,258	23%	0.2%
0043 – Tyndall-Panama City	457	523	81,223	81,223	15%	0.1%
0046 – AF-C-45 th MED GRP-PATRICK	197	248	65,706	65,706	26%	0.1%
0050 – AF-C-23 rd MED GRP-MOODY	230	265	67,090	67,090	16%	0.1%
0051 – AF-C-78 th MED GRP-ROBINS	542	618	67,875	67,875	14%	0.1%

Part C: DHA TRICARE Health Plan Assessment



Information Briefing Network Capabilities 45th Med Grp - Patrick

10 April 2019



“Medically Ready Force...Ready Medical Force”

Part C: DHA TRICARE Health Plan Assessment

Problem Statement



Request by NDAA 703 Workgroup to provide an assessment of the capability of the purchased care network to absorb clinic workload and enrollment currently being provided at **45th Med Grp - Patrick, FL.**

Part C: DHA TRICARE Health Plan Assessment

Methodology Overview



- Using M2/DHA Portfolios workload data, THP quantifies MTF capabilities /capacity/enrollment projected to shift to Purchased Sector Care (PSC) Market
 - Specialty care is defined as a 60-minute drive from physical address to specialist location. Assuming most beneficiaries live on post that are enrolled to the MTF, the network assessments will use 40 miles (urban) and 55 miles (rural) to approximate drive-time.
 - Primary care is defined as a 30-minute drive from physical address to address of PCM location. Assuming most beneficiaries live on post that are enrolled to the MTF, the network assessments will use 15 miles (urban) and 30 miles (rural) to approximate drive-time. PCPs generally have relatively full panels. Assuming the MCSC could contract 50% of the community non-network PCMs within the respective mile radius, an additional empanelment per provider is calculated.
- Utilizing workload data provided by THP, MCSC identifies/quantifies current PSC capabilities/capacity to absorb MTF workload
- THP summarizes ability of PSC to meet the new demand for services projected to shift from the MTF to PSC

Specialty Legend:

- **Green:** No anticipated problems meeting workload with ATC standards.
- **Yellow:** Current or Potential for increased appointment wait time and/or drive time.
- **Red:** Anticipate exceeding appointment wait time and/or drive time standards.

Primary Care Legend:

- **Green:** Up to 2.5% more enrollees (<49) easily
- **Yellow:** 2.5% - 5% (50-99) with moderate difficulty
- **Red:** > 5% (100+) with great difficulty

Part C: DHA TRICARE Health Plan Assessment

PSC Assessment 45th Med Grp – Patrick PSA *Civilian Network Capabilities*



MCSC ASSESSMENT OF CIVILIAN NETWORK CAPABILITIES

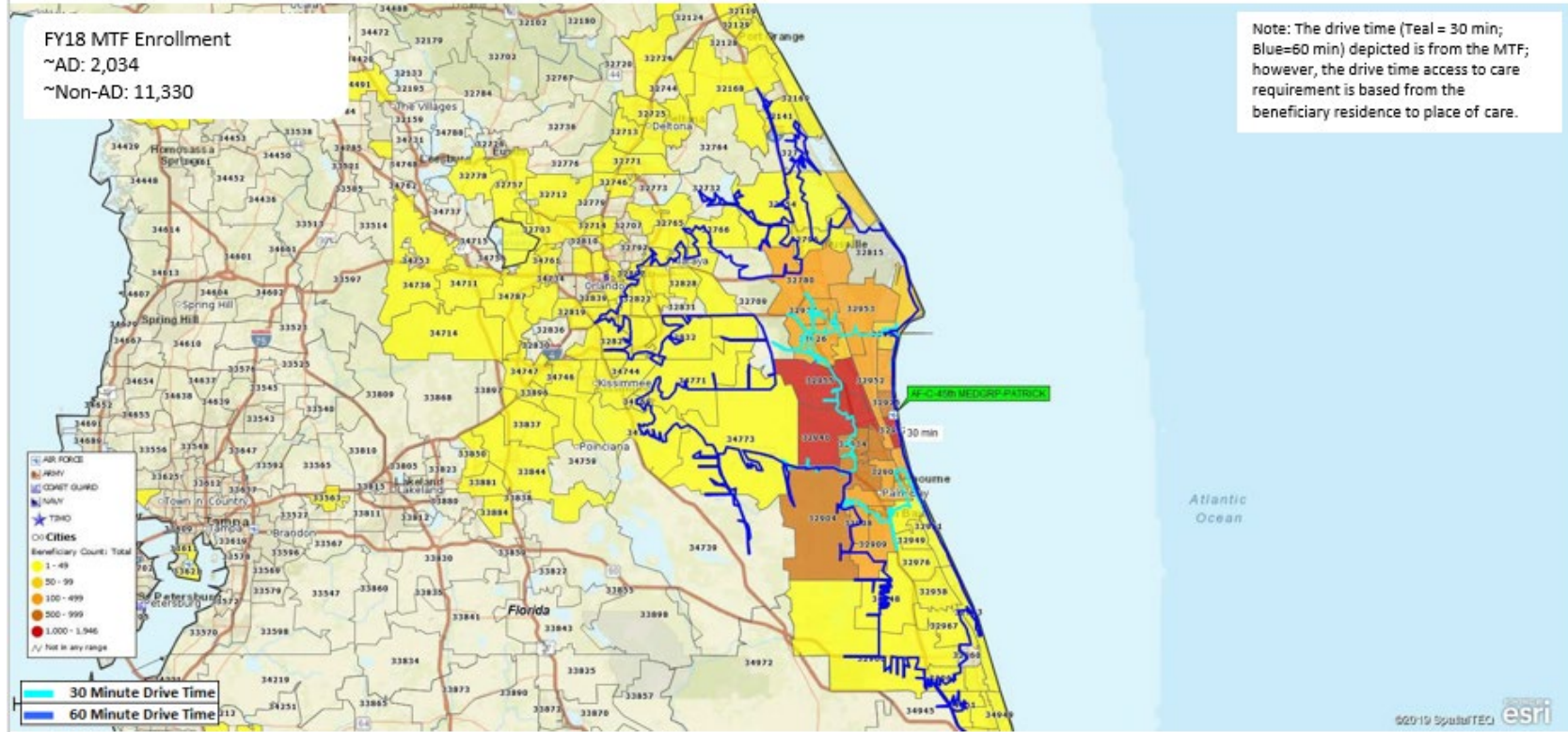
- **Primary Care:** Current capabilities: (**green**). Capabilities with absorbed workload: (**red**)
- **Mental Health:** Current capabilities: (**green**). Capabilities with absorbed workload: (**green**)
- **Gynecology:** Current capabilities: (**green**). Capabilities with absorbed workload: (**green**)
- **Optometry:** Current capabilities: (**green**). Capabilities with absorbed workload: (**green**)

Considerations:

- Within a 15-mile radius of 45th Med Grp – Patrick, 98 TRICARE Primary Care Managers (PCMs) are currently accepting new patients. Assuming the MCSC could contract 50% of the 24 non-network PCMs within the 15-mile radius, each PCM would have to empanel 103 beneficiaries.
- There are six network facilities within drive time of 45th Med Grp – Patrick that offer like services currently provided by the MTF with more than adequate access to care.
- There are 22 urgent care centers within 25 miles of the 45th Med Grp – Patrick.
- When shifting workload to the network, a phased approach should be developed.
- Case managed enrollees should have a warm hand-off to the MCSC.

Part C: DHA TRICARE Health Plan Assessment

45th Med Grp - Patrick TRICARE Non-ADSM MTF Enrollees



Part D: Independent Government Assessment (Network Insight)

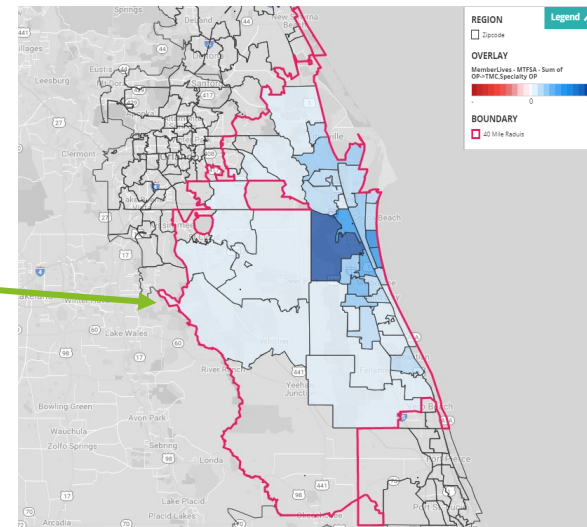
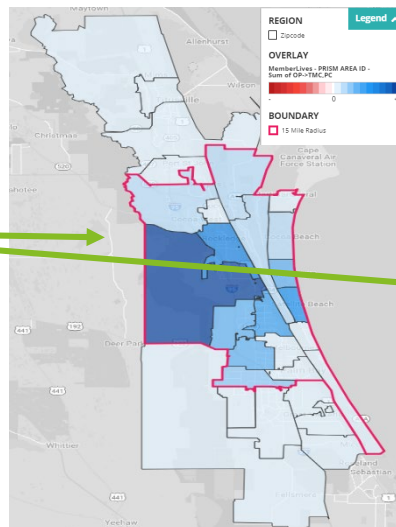
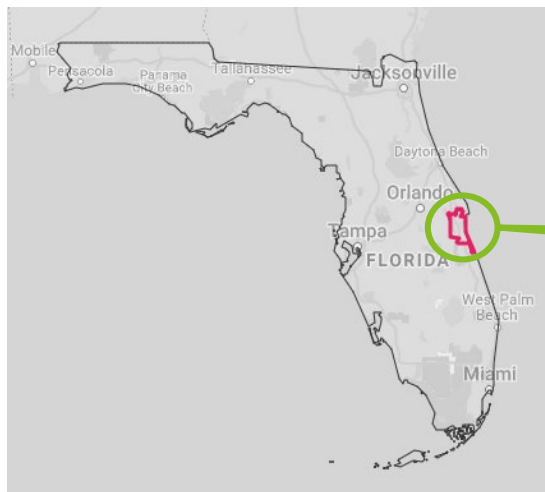


MHS Section 703 Workgroup Patrick Network Assessment Discussion

10 April 2019

Network Assessment: Patrick (1 of 2)

Scenario: AF-C-45th MEDGRP-Patrick is an outpatient facility being evaluated for conversion to a Service Member and Occupational Health Clinic



Shading is based on population within the zip code and map scale

- 99% of non-AD MTF Prime & Plus beneficiaries are living within the 30-minute drive-time boundary for Primary Care, concentrated around the MTF location
- 99% of MTF Prime, Reliant & Medicare Eligible beneficiaries are living within the 60-minute drive-time boundary for Specialty Care, concentrated around the MTF location

Beneficiary Category	Within 30 min	Within 60 min	Outside 60 min
Non-AD MTF Prime ¹	9,542	117	0
Plus	535	5	0
Total	10,077	122	0

1: Includes 184 Medicare Eligible MTF Prime beneficiaries

Beneficiary Category	Within 30 min	Within 60 min	Outside 60 min
MTF Prime ²	11,487	933	0
Reliant	178	2	0
Medicare Eligible	9,920	3,645	5
Total	21,585	4,580	5

2: Includes 206 Medicare Eligible MTF Prime beneficiaries

Impacted Beneficiaries:

Specialty OP (if applicable): MTF Prime + Reliant + Medicare Eligible (MTF Service Area ID)

PC: Non-AD MTF Prime + Plus (PRISM Area ID)

Note: To estimate the geographic market within a 30-minute drive time of the MTF, we assumed an average driving speed of 30 MPH, and thus a 15-mile radius around the Zip code of the MTF was determined as the geographic market

Network Assessment: Patrick (2 of 2)

The potential impact of new MHS Beneficiaries on the total population is well below the 10% threshold for both population groups and thus will not materially impact supply and demand of services in the market

Age Group	MHS Target Population	% of Total MHS Target Population	Population Total	% of Population Total	Target Population Introduced
0 to 4	555	5.4%	18,992	4.4%	2.9%
5 to 14	1,630	16.0%	43,330	10.1%	3.8%
15 to 17	568	5.6%	14,574	3.4%	3.9%
18 to 24	816	8.0%	31,226	7.3%	2.6%
25 to 34	631	6.2%	44,202	10.3%	1.4%
35 to 44	809	7.9%	44,359	10.4%	1.8%
45 to 64	4,651	45.6%	126,545	29.5%	3.7%
65 and over	538	5.3%	105,075	24.5%	0.5%
Total	10,199	100.0%	428,303	100.0%	2.4%

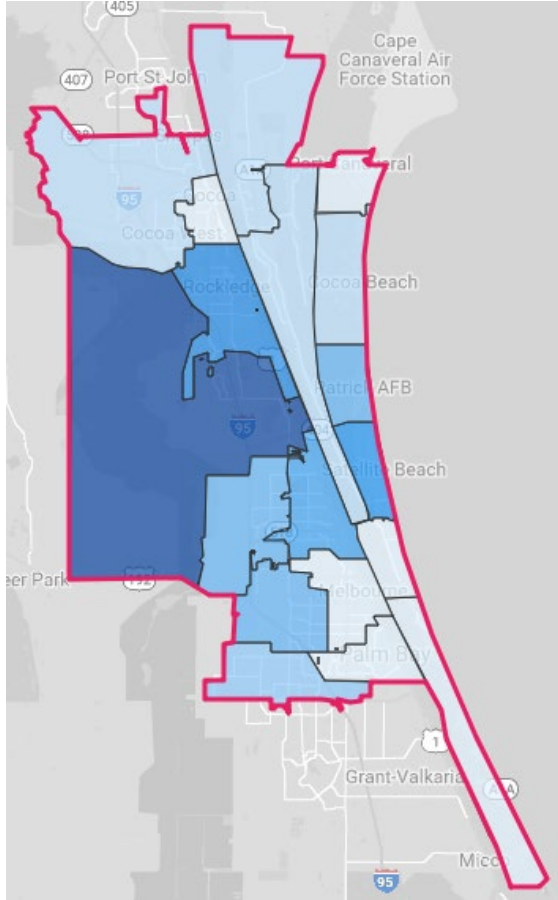
Primary Care:
Non-AD MTF
Prime, and Plus
Population

Age Group	MHS Target Population	% of Total MHS Target Population	Population Total	% of Population Total	Target Population Introduced
0 to 4	589	2.2%	52,075	5.0%	1.1%
5 to 14	1,725	6.6%	118,054	11.2%	1.5%
15 to 17	610	2.3%	39,192	3.7%	1.6%
18 to 24	1,307	5.0%	97,630	9.3%	1.3%
25 to 34	1,708	6.5%	121,293	11.5%	1.4%
35 to 44	1,488	5.7%	120,206	11.4%	1.2%
45 to 64	5,593	21.4%	286,142	27.2%	2.0%
65 and over	13,150	50.2%	216,865	20.6%	6.1%
Total	26,169	100.0%	1,051,457	100.0%	2.5%

Specialty OP:
MTF Prime,
Reliant, and
Medicare Eligible
Population

Patrick: Network Adequacy Analysis (1 of 4)

Primary Care



Key

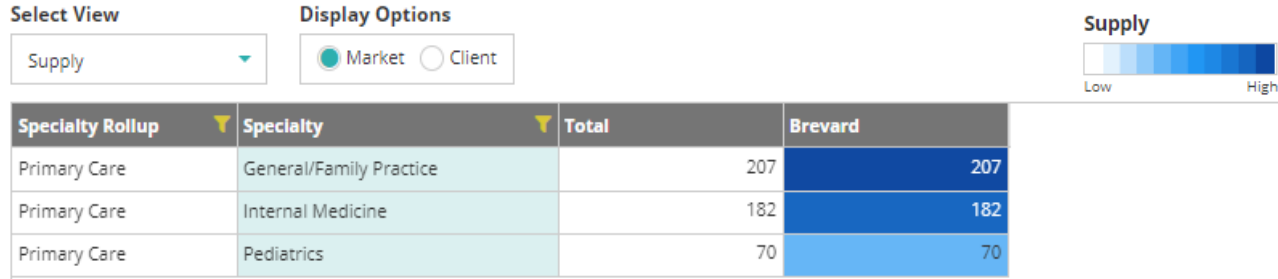
- = 15-mile (30-minute) boundary
- = Density of beneficiaries by zip code

- The above geography represents a 15-mile radius, which was used due to this geography being an **urban area**
- The identified drive time **includes 29 zip codes and one partial county (Brevard)**
- **Of the 10,199 impacted primary care beneficiaries** attributed to Patrick, **99% are represented within the 15-mile radius boundary**

Specialty	Number of Practice Sites	Number of Physicians
Adolescent Medicine	1	1
Family Practice	62	59
General Practice	8	5
Internal Medicine	60	54
Internal Medicine/Pediatrics	1	1
Pediatrics	23	35
Grand Total	155	155

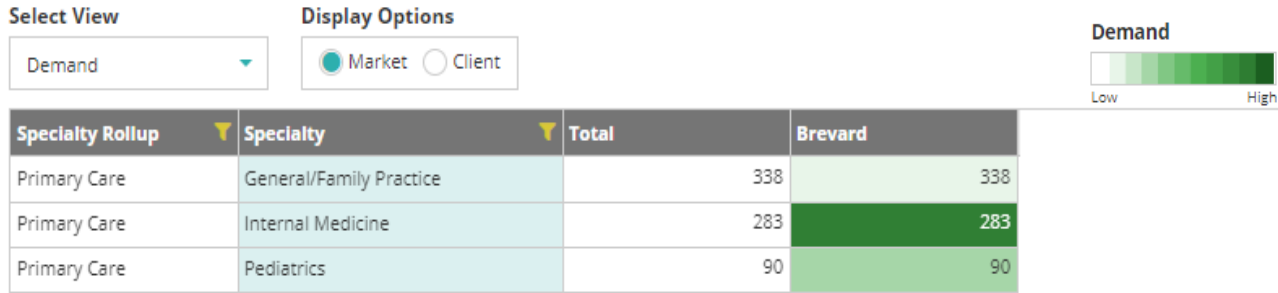
Patrick: Network Adequacy Analysis (2 of 4)

The **commercial primary care providers** within the 30-minute drive-time standard **are not capable** of accepting the specific demand from the **10,199** impacted beneficiaries



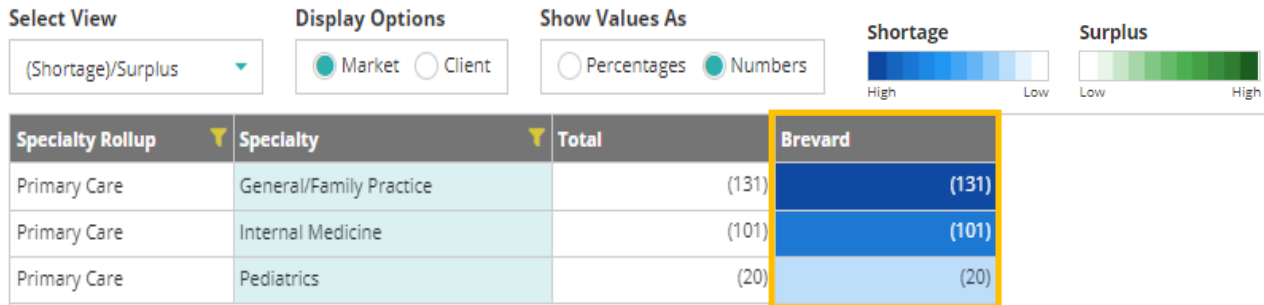
Current Supply (Not Limited to TRICARE)

- The supply of primary care physicians in Brevard county are concentrated in General / Family practice and Internal Medicine, which is aligned with the aging population (54% aged 45+)



Forecasted Demand

- Population growth over the last five years (2014 to 2018) has been considerable at 9.6%, and is projected to level out to 3.9% over the next five years (2019 to 2023)
- This growth will result in increased demands for primary care providers in the market area

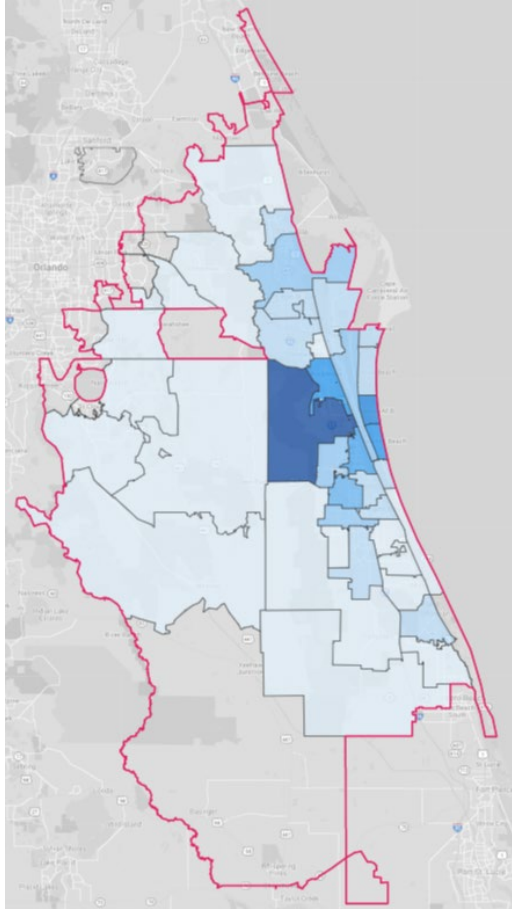


Resulting Shortage/Surplus

- Major shortages are projected across primary care providers across subspecialties in Brevard county
- The market may **be incapable of accepting increased demand due to population growth and the incremental demand of impacted TRICARE beneficiaries**

Patrick: Network Adequacy Analysis (3 of 4)

Specialty Care



Key

- = 40-mile (60-minute) boundary
- = Density of beneficiaries by zip code

- The above geography represents a 40-mile radius, which was used due to this geography being an **urban area**
- The identified drive time **includes 76 zip codes, one complete county (Brevard), and seven partial counties (Indian River, Okeechobee, Orange, Osceola, Seminole, St. Lucie, Volusia)**
- **Of the 26,169 impacted specialty care beneficiaries** attributed to Patrick, **99% are represented within the 40-mile radius boundary**

Specialty	Number of Practice Sites	Number of Physicians
Obstetrics/Gynecology	38	56
Psychiatric	32	65
Grand Total	70	121

Patrick: Network Adequacy Analysis (4 of 4)

The **commercial specialty care providers** within the 60-minute drive-time standard **are not capable** of accepting the specific demand from the **26,169** impacted beneficiaries

Select View: Supply | Display Options: Market Client | Supply Legend: Low to High

Specialty Rollup	Specialty	Total	Brevard*	Indian River	Okeechobee	Orange	Osceola	St. Lucie	Seminole	Volusia
Medical Specialist	Psychiatry	285	60	10	1	100	14	26	27	47
Surgical Specialist	Obstetrics/Gynecology	400	64	21	2	190	37	13	38	35

Current Supply (Not Limited to TRICARE)

- The majority of Psychiatry providers in the market are concentrated in Orange county, which sits on the edge of the drive-time boundary, and Brevard county, where the MTF is located

Select View: Demand | Display Options: Market Client | Demand Legend: Low to High

Specialty Rollup	Specialty	Total	Brevard	Indian River	Okeechobee	Orange	Osceola	St. Lucie	Seminole	Volusia
Medical Specialist	Psychiatry	678	106	25	6	258	64	54	75	90
Surgical Specialist	Obstetrics/Gynecology	595	91	22	6	233	49	44	79	71

Forecasted Demand

- Population growth over the last five years (2014 to 2018) has been very high at 15.3%, and is projected to level out to 6.1% over the next five years (2019 to 2023)
- This high level of growth has resulted in increased demand for specialty services

Select View: (Shortage)/Surplus | Display Options: Market Client | Show Values As: Percentages Numbers | Shortage Legend: High to Low | Surplus Legend: Low to High

Specialty Rollup	Specialty	Total	Brevard	Indian River	Okeechobee	Orange	Osceola	St. Lucie	Seminole	Volusia
Medical Specialist	Psychiatry	(393)	(46)	(15)	(5)	(158)	(50)	(28)	(48)	(43)
Surgical Specialist	Obstetrics/Gynecology	(195)	(27)	(1)	(4)	(43)	(12)	(31)	(41)	(36)

Resulting Shortage/Surplus

- Large shortages are projected in the market amongst specialty providers across the market area, particularly with Psychiatry providers
- The market may **be incapable of accepting increased demand due to population growth and the incremental demand of impacted TRICARE beneficiaries**

*County in which MTF is located

Patrick: Targeted Practice Profiles (1 of 4)

Based on the number of primary care practices accepting TRICARE or other government-sponsored insurance and offering after hours care, we expect a large number of providers to meet MHS access standards

Primary Care Practice Profiles

Practice Site Size	Number of Practice Sites	Average Number of Physicians per Site
Small (1-4)	154	1.2
Medium (5-9)	1	5.0
Grand Total	155	1.2

Practice Name	Monthly Extended Hours
Consulate Health Care	105.0
Pediatrics Medical Group	105.0
Baba Healthcare Inc	15.0
Med Fast Urgent Care	14.0
Brevard Family Walk-In Clinic	10.0
Lizzy R Thomas MD	5.0
Atlantic Medical Group	5.0
Arnold Primary Care	4.0
Ricardo A Henriques MD	3.0
Live Longer Medical	3.0
Melbourne Associates Of Brevard	3.0
Brevard Internal Medicine	3.0
Medical Associates Of Brevard	2.0
Arcand Family Practice	2.0
OMNI Healthcare	2.0
Grand Total	281.0

Hospital Alignment ^{1,2}	Number of Practice Sites	Number of Physicians
(Aligned to Multiple Hospitals)	50	50
Holmes Regional Medical Center	34	43
Wuesthoff Medical Center - Rockledge	26	29
Wuesthoff Medical Center Melbourne	9	12
Cape Canaveral Hospital	10	10
Viera Hospital	6	6
Palm Bay Hospital	2	2
Orlando Va Medical Center	1	2
(Practices without a Physician Count)	13	1
Grand Total	155	155

Health System Alignment	Number of Practice Sites	Number of Physicians
Other	155	155
Grand Total	155	155

- List includes top 9 hospitals by aligned physicians
 - Physician practices may be aligned with hospitals outside of the catchment area
- Practices without a physician count have either opted to not participate in data.medicare.gov or have declined not to answer survey questions

Patrick: Targeted Practice Profiles (2 of 4)

Based on the number of Psychiatry practices accepting TRICARE or other government-sponsored insurance and offering after hours care, we expect some providers to meet MHS access standards

Psychiatry Practice Profiles

Practice Site Size	Number of Practice Sites	Average Number of Physicians per Site
Small (1-4)	29	1.7
Medium (5-9)	1	5.0
Large (10+)	2	10.5
Grand Total	32	2.5

Practice Name	Monthly Extended Hours
Circles Of Care Inc	113.0
Advanced Behavioral Care	5.0
Parwati C Maddali MD	4.0
Indialantic Psychiatry	4.0
Atlantic Psychiatric Centers	2.0
Grand Total	128.0

Health System Alignment	Number of Practice Sites	Number of Physicians
Other	32	65
Grand Total	32	65

Hospital Alignment ¹	Number of Practice Sites	Number of Physicians
(Aligned to Multiple Hospitals)	25	46
Wuesthoff Medical Center - Rockledge	2	14
D'Albora Children'S Crisis Stabilization	1	4
Holmes Regional Medical Center	2	1
Wuesthoff Medical Center Rockledge	1	
Parrish Medical Center	1	
Grand Total	32	65

- Physician practices may be aligned with hospitals outside of the catchment area. Practices without a physician count have either opted to not participate in data.medicare.gov or have declined to answer survey questions.

Patrick: Targeted Practice Profiles (3 of 4)

Based on the number of Obstetrics / Gynecology practices accepting TRICARE or other government-sponsored insurance and offering after hours care, we do not expect a large number of providers to meet MHS access standards

Obstetrics / Gynecology Practice Profiles

Practice Site Size	Number of Practice Sites	Average Number of Physicians per Site
Small (1-4)	37	1.5
Medium (5-9)	1	8.0
Grand Total	38	1.7

Practice Name	Monthly Extended Hours
Orlando Center For Womens Health	3.0
Island Weight Clinic Of Melbourne	2.0
Alex Rojas MD	2.0
Grand Total	7.0

Health System Alignment	Number of Practice Sites	Number of Physicians
Other	38	56
Grand Total	38	56

Hospital Alignment ¹	Number of Practice Sites	Number of Physicians
Holmes Regional Medical Center	13	16
(Aligned to Multiple Hospitals)	8	11
Wuesthoff Medical Center - Rockledge	3	8
Winter Park Memorial Hospital	1	8
Florida Hospital Celebration Health	1	3
Parrish Medical Center	2	3
Cape Canaveral Hospital	2	2
Wuesthoff Medical Center Melbourne	1	1
Florida Hospital New Smyrna	1	1
St Cloud Regional Medical Center	1	1
Osceola Regional Medical Center	1	1
Sebastian River Medical Center	1	1
Univ. Of Vermont - Fletcher Allen Health Care	1	
Viera Hospital	1	
Wuesthoff Medical Center Rockledge	1	
Grand Total	38	56

1. Physician practices may be aligned with hospitals outside of the catchment area

Practices without a physician count have either opted to not participate in data.medicare.gov or have declined not to answer survey questions

Patrick: Targeted Practice Profiles (4 of 4)

While ability and willingness to accept TRICARE patients must be confirmed, the majority of providers in the Patrick market are accepting government-sponsored insurance and many are already contracted to provide services to TRICARE beneficiaries, with the exception of Obstetrics / Gynecology providers

Primary Care Providers

Likelihood of offering services to TRICARE members	Number of Sites	Number of Physicians
Contracted with TRICARE	52	44
High Likelihood*	22	25
Medium Likelihood	65	70
Low Likelihood	16	16
Grand Total	155	155

Psychiatry Providers

Likelihood of offering services to TRICARE members	Number of Sites	Number of Physicians
Contracted with TRICARE	9	21
High Likelihood*	5	23
Medium Likelihood	11	14
Low Likelihood	7	7
Grand Total	32	65

Obstetrics / Gynecology Providers

Likelihood of offering services to TRICARE members	Number of Sites	Number of Physicians
Contracted with TRICARE	4	
High Likelihood*	1	1
Medium Likelihood	28	46
Low Likelihood	5	9
Grand Total	38	56

Contracted Practice Sample	Specialty
Arcand Family Practice	Family Practice
Armando O Martinez MD	Family Practice
Atlantic Coast Pediatrics	Pediatrics
Atlantic Medical Group	Internal Medicine
Bobby Abraham MD	Internal Medicine
Brevard Health Center	Internal Medicine
Eric L Lang DO	General Practice
Florida Pediatric Group	Pediatrics
Health First Medical Group	Family Practice
Healthy Journeys Inc	Internal Medicine
Healthy Living Clinic	Family Practice
Healthy Partners Primary Care	Internal Medicine
Internal Medicine Of Brevard PLLC	Internal Medicine
Atlantic Psychiatric Centers	Psychiatric
ATLANTIC PSYCHIATRIC CENTERS, INC.	Psychiatric
Behavioral Medicine & Psychotherapy LLC	Psychiatric
HEALTH FIRST MEDICAL GROUP, LLC	Psychiatric
MEDICAL TECHNOLOGY TRANSFER CORPORATION	Psychiatric
HEALTH FIRST MEDICAL GROUP, LLC	Obstetrics/Gynecology
PEDIATRIX MEDICAL GROUP OF FLORIDA INC	Obstetrics/Gynecology
STEWART MEDICAL GROUP INC	Obstetrics/Gynecology

Currently Contracted - The provider organization has a history of submitting In-Network claims to TRICARE

High Likelihood* - The provider organization has a history of submitting Out-of-Network claims to TRICARE

Medium Likelihood - Providers are accepting Medicare and/or Medicaid

Low Likelihood - The provider organization has a history of not accepting Government Sponsored Health Plan patients

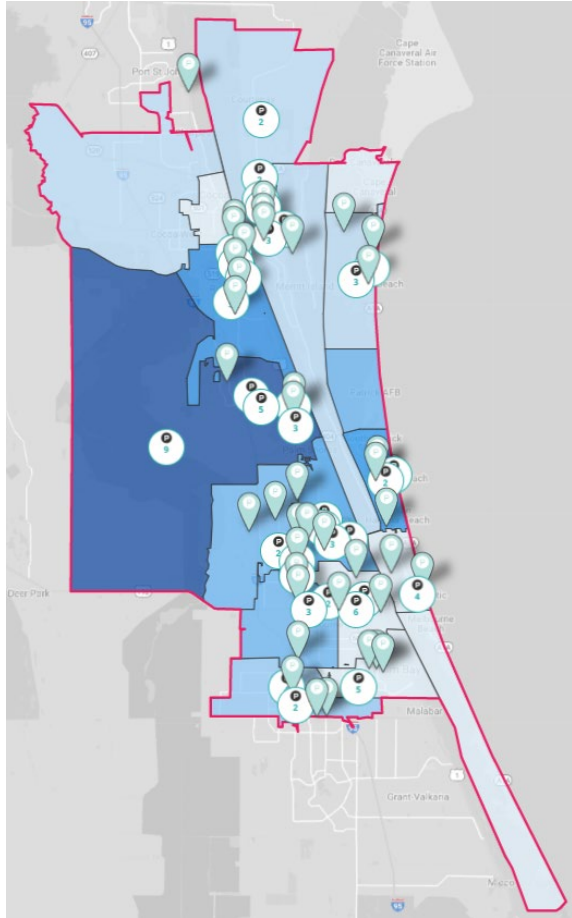
***Note:** The current TPA providing claims processing services for the TRICARE FOR LIFE beneficiary designation do not provide an "In-Network" designation during the claims process. These provider claims are marked as Out-of-Network by default

Appendix A

1. Alternate Slides

Patrick: Network Adequacy Analysis (1 of 4)

Primary Care



Key

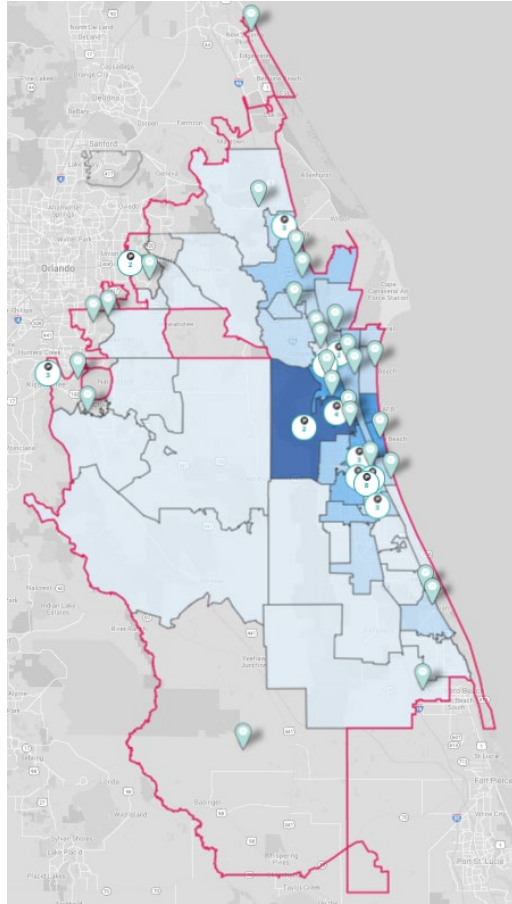
- = 15-mile (30-minute) boundary
- = Density of beneficiaries by zip code

- The above geography represents a 15-mile radius, which was used due to this geography being an **urban area**
- The identified drive time **includes 29 zip codes and one partial county (Brevard)**
- **Of the 10,199 impacted primary care beneficiaries** attributed to Patrick, **99% are represented within the 15-mile radius boundary**

Specialty	Number of Practice Sites	Number of Physicians
Adolescent Medicine		1
Family Practice		62
General Practice		8
Internal Medicine		60
Internal Medicine/Pediatrics		1
Pediatrics		23
Grand Total		155

Patrick: Network Adequacy Analysis (3 of 4)

Specialty Care



Key

- = 40-mile (60-minute) boundary
- = Density of beneficiaries by zip code

- The above geography represents a 40-mile radius, which was used due to this geography being an **urban area**
- The identified drive time **includes 76 zip codes, one complete county (Brevard), and seven partial counties (Indian River, Okeechobee, Orange, Osceola, Seminole, St. Lucie, Volusia)**
- **Of the 26,169 impacted specialty care beneficiaries attributed to Patrick, 99% are represented within the 40-mile radius boundary**

Specialty	Number of Practice Sites	Number of Physicians
Obstetrics/Gynecology	38	56
Psychiatric	32	65
Grand Total	70	121

Network Assessment: Patrick

The table below breaks out the potentially impacted TRICARE beneficiaries by county of residence that could potentially be impacted by facility closure / conversion.

County	Florida			
	Brevard	Indian River	Orange	Osceola
Primary Care (Non-AD MTF Prime, Plus)	10,199 100.0%	0 0.0%	0 0.0%	0 0.0%
Specialty OP (MTF Prime, Reliant, Medicare Eligible)	24,697 94.4%	825 3.2%	271 1.0%	377 1.4%

Primary Geography for Evaluation:

Primary Care Services:

- Brevard

Specialty Care Services:

- Brevard

Secondary Geography for Evaluation:

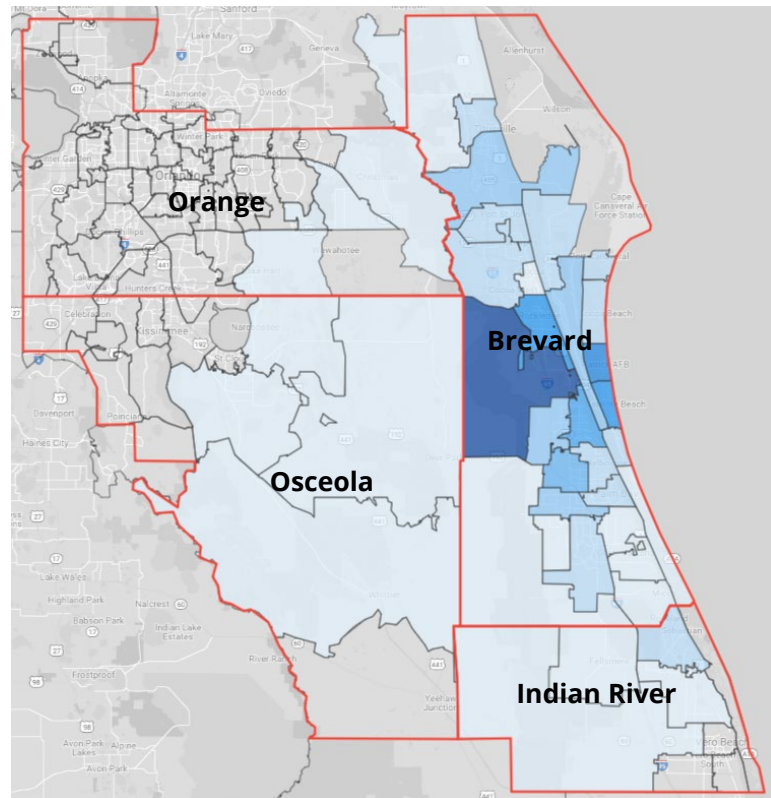
Primary Care Services:

- N/A

Specialty Care Services:

- Indian River, Orange, Osceola

Drive-time boundary is the county that encompasses zip codes within drive time radius from MTF



Primary Network Adequacy Evaluation

Secondary Network Adequacy Evaluation

Part E: P4I Measures (1 of 17)

MHS Dashboard - AF-C-45th MEDGRP-PATRICK



All CI RMG TRN My
Filter

Export

View as of

Apply Clear

Layout



Go back to: [MHS](#) > [AFSPC](#)

Readiness- **Medically** Ready Force

Individual Medical Readiness (IMR)

No data is currently available

Deployment Limiting Med/Dent Condition to fit

Click documentation icon for measure details



Percent of Providers Meeting KSAs for General Surgery

Click documentation icon for measure details



Percent of Providers Meeting KSAs for Orthopedic Surgery

Click documentation icon for measure details



Part E: P4I Measures (2 of 17)

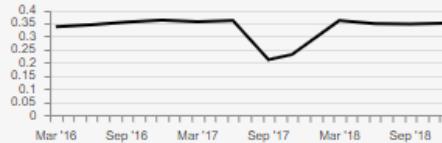
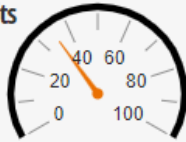
Better Health- **Improve** Well-Being

Health Related
Quality of Life

No data is currently available

Obesity Prevalence in Adults

34.9 %



Current Data Date

Dec '18

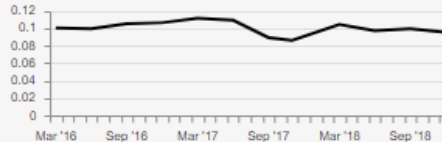
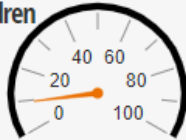
Freq of Update

Quarterly

Lower is better

Obesity Prevalence in Children

9.5 %



Current Data Date

Dec '18

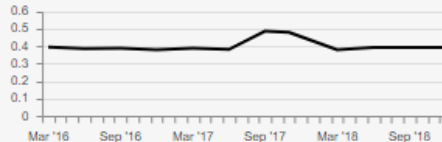
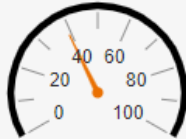
Freq of Update

Quarterly

Lower is better

Overweight Prevalence
in Adults

39.1 %



Current Data Date

Dec '18

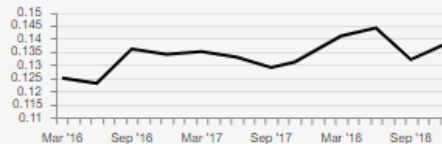
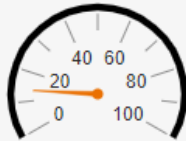
Freq of Update

Quarterly

Lower is better

Overweight Prevalence
in Children

13.8 %



Current Data Date

Dec '18

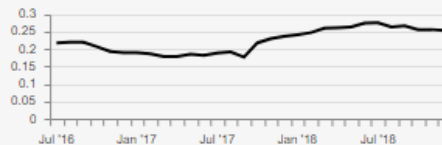
Freq of Update

Quarterly

Lower is better

Cessation Counseling
Amongst Tobacco Users

25.2 %



Current Data Date

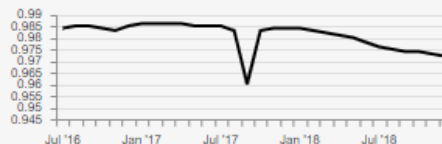
Dec '18

Freq of Update

Monthly

Tobacco Use Assessment

97.2 %



Current Data Date

Dec '18

Freq of Update

Monthly

Part E: P4I Measures (3 of 17)

Better Care- **Improve** Clinical Outcomes


Risk Adjusted Mortality
(All Cause)

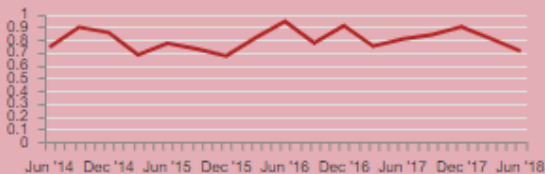
No data is currently available

Inpatient: Recommend
Hospital (Satisfaction)

No data is currently available

Outpatient Provider
Communication

70.96 % 



Current Data Date

Jun '18

Freq of Update

Quarterly

Part E: P4I Measures (4 of 17)

Better Care- **Improve** Safety

Catheter-Associated
Urinary Tract Infections - SIR

No data is currently available

Central Line-Associated
Bloodstream Infections - SIR

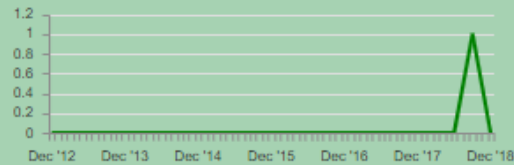
No data is currently available

WSS (Wrong Site Surgery)

No data is currently available

URFO (Unintended
Retained Foreign Objects)

0



Current Data Date

Dec '18

Freq of Update

Quarterly

Lower is better

NSQIP (30 Day) All Case

Morbidity Index [Click to view the report](#)

NSQIP (30 Day) All Case

Mortality Index [Click to view the report](#)

Part E: P4I Measures (5 of 17)

Better Care- **Improve** Condition-based Quality Care

Diabetes A1c Testing
96.06 %



Current Data Date
Dec '18

Freq of Update
Monthly

Low Back Pain Imaging Studies
80.47 %



Current Data Date
Dec '18

Freq of Update
Monthly

Children with Pharyngitis
Appropriate Testing
74.19 %



Current Data Date
Dec '18

Freq of Update
Monthly

HEDIS Breast Cancer
Screening
78.74 %



Current Data Date
Dec '18

Freq of Update
Monthly

HEDIS Cervical Cancer
Screening
76.75 %



Current Data Date
Dec '18

Freq of Update
Monthly

HEDIS Colon Cancer
Screening
76.66 %



Current Data Date
Dec '18

Freq of Update
Monthly

Part E: P4I Measures (6 of 17)

7-Day Mental
Health Follow-Up
51.85 %



Current Data Date
Dec '18

Freq of Update
Monthly

HEDIS All Cause
Readmissions

No data is currently available

Well Child
90.20 %



Current Data Date
Dec '18

Freq of Update
Monthly

IQI #33 Primary Cesarean Section

No data is currently available

Postpartum Hemorrhage

No data is currently available

Unexpected Newborn
Complication #716

No data is currently available

Part E: P4I Measures (7 of 17)

Better Care- **Improve** Comprehensive Primary Care

Days to Third Next Available
24 Hour Appointment
0.87



Current Data Date

Feb '19

Lower is better

Freq of Update

Monthly

Days to Third Next Available
Future Appointment
4.89



Current Data Date

Feb '19

Lower is better

Freq of Update

Monthly

Potentially Recapturable
PC Leakage to the Network
21.25 %



Current Data Date

Dec '18

Lower is better

Freq of Update

Monthly

PCM Continuity
74.01 %



Current Data Date

Feb '19

Lower is better

Freq of Update

Monthly

Part E: P4I Measures (8 of 17)

Better Care- Optimize & Standardize Access

Percent of Direct Care Enrollees
with Secure Messaging

51.64 %



Current Data Date
Feb '19

Freq of Update
Monthly

SM Response Time
One Business Day

82.55 %



Current Data Date
Feb '19

Freq of Update
Monthly

Satisfaction with
Getting Care When Needed

75.98 %



Current Data Date
Sep '18

Freq of Update
Quarterly

Specialty Care:
Referral Order to Book

3.86



Current Data Date
Dec '18

Freq of Update
Monthly

Lower is better

Specialty Care:
Booked to Actual Appt

13.99



Current Data Date
Dec '18

Freq of Update
Monthly

Lower is better

Part E: P4I Measures (9 of 17)

Ambulatory Specialty Care
Leakage
51.2 %



Current Data Date

Dec '18

Freq of Update

Monthly

Lower is better

Active Duty Days to Primary
Care Appointments
0.52



Current Data Date

Dec '18

Freq of Update

Monthly

Lower is better

Active Duty Days to Specialty
Care Appointments
10.77



Current Data Date

Dec '18

Freq of Update

Monthly

Lower is better

MEB Stage Timeliness

Click documentation icon for measure details



Part E: P4I Measures (10 of 17)

Better Care - **Improve** Regulatory Compliance

American Council for Graduate Medical Education (ACGME) Accreditation Status

Click documentation icon for measure details



Accreditation for DoD Clinical Laboratories

Click documentation icon for measure details



Joint Commission Accreditation

Click documentation icon for measure details

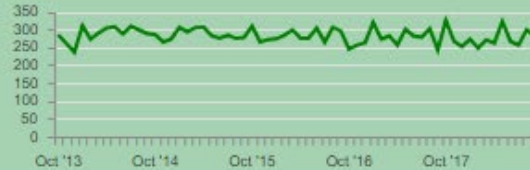


Part E: P4I Measures (11 of 17)

Lower Cost - **Improve** Stewardship

Per Member Per Month

0.59 %



Current Data Date

Sep '18

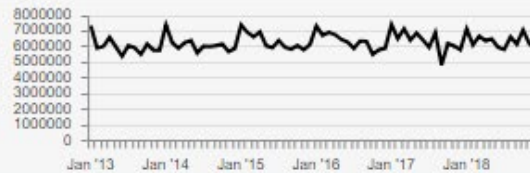
Lower is better

Freq of Update

Monthly

Total Purchased Care Cost

\$5,769,004.75



Current Data Date

Dec '18

Lower is better

Freq of Update

Monthly

Private Sector Care Cost
per Prime Enrollee

-2.16 %



Current Data Date

Sep '18

Lower is better

Freq of Update

Monthly

Total Empanelment

-1.6 %



Current Data Date

Feb '19

Lower is better

Freq of Update

Monthly

Pharmacy Percent Retail Spend

30.0 %



Current Data Date

Dec '18

Lower is better

Freq of Update

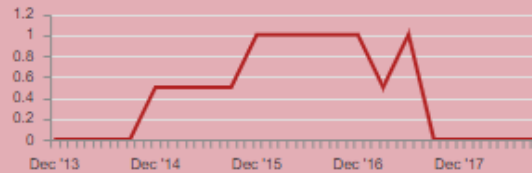
Monthly

Part E: P4I Measures (12 of 17)

Active Duty Specialty Care

Provider Efficiency

0 %



Current Data Date

Sep '18

Freq of Update

Quarterly

Overall Occupancy Rate (US)

No data is currently available

ICU Occupancy Rate (US)

No data is currently available

Enterprise Support Activity (ESA) Net Benefit

Click documentation icon for measure details



Part E: P4I Measures (14 of 17)

Better Care- Improve Clinical Outcomes

Measure	Data As Of	Next Refresh	Red	Yellow	Green	Blue	AF-C-45th MEDGRP-PATRICK
Risk Adjusted Mortality Lower is better	-	5/2019	-	-	-	-	Current - Prior - Performance - Trend -
Recommend Hospital	-	3/2019	-	-	-	-	Current - Prior - Performance - Trend -
Provider Communication	6/2018	3/2019	< 85%	>= 85%	>= 88%	>= 91%	Current ^A 70.96 % Prior ^A 80.64 % Performance - Trend 2

Better Care- Improve Safety

Measure	Data As Of	Next Refresh	Red	Yellow	Green	Blue	AF-C-45th MEDGRP-PATRICK
CAUTI - SIR Lower is better	-	4/2019	-	-	-	-	Current - Prior - Performance - Trend -
CLABSI - SIR Lower is better	-	4/2019	-	-	-	-	Current - Prior - Performance - Trend -
WSS Lower is better	-	4/2019	-	-	-	-	Current - Prior - Performance - Trend -
URFO Lower is better	12/2018	4/2019	Current qtr >= 3 qtr avg	current qtr < 3 qtr avg.	0 events in current qtr	0 events for 3 qtrs	Current ^G 0 Prior ^A 1 Performance - Trend 1

Better Health- Improve Well-Being

Measure	Data As Of	Next Refresh	Red	Yellow	Green	Blue	AF-C-45th MEDGRP-PATRICK
HRQOL	-	9/2019	-	-	-	-	Current - Prior - Performance - Trend -
Obesity in Adults Lower is better	12/2018	5/2019	-	-	-	-	Current 34.9 % Prior 34.6 % Performance - Trend 1
Obesity in Children Lower is better	12/2018	5/2019	-	-	-	-	Current 9.5 % Prior 9.9 % Performance - Trend 1
Overweight in Adults Lower is better	12/2018	5/2019	-	-	-	-	Current 39.1 % Prior 39.1 % Performance - Trend 2
Overweight in Children Lower is better	12/2018	5/2019	-	-	-	-	Current 13.8 % Prior 13.2 % Performance - Trend 1
Tobacco Counseling	12/2018	4/2019	-	-	-	-	Current 25.2 % Prior 25.5 % Performance - Trend 1
Tobacco Use Assessment	12/2018	4/2019	-	-	-	-	Current 97.2 % Prior 97.3 % Performance - Trend 2

Part E: P4I Measures (15 of 17)

Better Care-Improve Condition-based Quality Care

Measure	Data As Of	Next Refresh	Red	Yellow	Green	Blue	AF-C-45th MEDGRP-PATRICK								
Diabetes A1c Testing	12/2018	4/2019	< 90.54%	>= 90.54%	>= 93.37%	>= 94.89%	<table border="1"> <tr><td>Current</td><td>Prior</td></tr> <tr><td>96.06 %</td><td>96.10 %</td></tr> <tr><td>Performance</td><td>Trend</td></tr> <tr><td>∨</td><td>1</td></tr> </table>	Current	Prior	96.06 %	96.10 %	Performance	Trend	∨	1
Current	Prior														
96.06 %	96.10 %														
Performance	Trend														
∨	1														
Low Back Pain	12/2018	4/2019	< 73.91%	>= 73.91%	>= 78.57%	>= 82.98%	<table border="1"> <tr><td>Current</td><td>Prior</td></tr> <tr><td>80.47 %</td><td>79.39 %</td></tr> <tr><td>Performance</td><td>Trend</td></tr> <tr><td>∧</td><td>1</td></tr> </table>	Current	Prior	80.47 %	79.39 %	Performance	Trend	∧	1
Current	Prior														
80.47 %	79.39 %														
Performance	Trend														
∧	1														
Children w/Pharyngitis	12/2018	4/2019	< 86.86%	>= 86.86%	>= 90.61%	>= 94.12%	<table border="1"> <tr><td>Current</td><td>Prior</td></tr> <tr><td>74.19 %</td><td>72.73 %</td></tr> <tr><td>Performance</td><td>Trend</td></tr> <tr><td>∧</td><td>1</td></tr> </table>	Current	Prior	74.19 %	72.73 %	Performance	Trend	∧	1
Current	Prior														
74.19 %	72.73 %														
Performance	Trend														
∧	1														
Breast Cancer Screening	12/2018	4/2019	< 73.55%	>= 73.55%	>= 77.49%	>= 81.04%	<table border="1"> <tr><td>Current</td><td>Prior</td></tr> <tr><td>78.74 %</td><td>79.20 %</td></tr> <tr><td>Performance</td><td>Trend</td></tr> <tr><td>∨</td><td>3</td></tr> </table>	Current	Prior	78.74 %	79.20 %	Performance	Trend	∨	3
Current	Prior														
78.74 %	79.20 %														
Performance	Trend														
∨	3														
Cervical Cancer Screening	12/2018	4/2019	< 75.91%	>= 75.91%	>= 79.02%	>= 82.48%	<table border="1"> <tr><td>Current</td><td>Prior</td></tr> <tr><td>76.75 %</td><td>76.62 %</td></tr> <tr><td>Performance</td><td>Trend</td></tr> <tr><td>∧</td><td>4</td></tr> </table>	Current	Prior	76.75 %	76.62 %	Performance	Trend	∧	4
Current	Prior														
76.75 %	76.62 %														
Performance	Trend														
∧	4														
Colon Cancer Screening	12/2018	4/2019	< 63.34%	>= 63.34%	>= 70.21%	>= 74.7%	<table border="1"> <tr><td>Current</td><td>Prior</td></tr> <tr><td>76.66 %</td><td>76.80 %</td></tr> <tr><td>Performance</td><td>Trend</td></tr> <tr><td>∨</td><td>1</td></tr> </table>	Current	Prior	76.66 %	76.80 %	Performance	Trend	∨	1
Current	Prior														
76.66 %	76.80 %														
Performance	Trend														
∨	1														

7-Day Mental Health	12/2018	4/2019	< 51.72%	>= 51.72%	>= 62.9%	>= 69.68%	<table border="1"> <tr><td>Current</td><td>Prior</td></tr> <tr><td>51.85 %</td><td>44.90 %</td></tr> <tr><td>Performance</td><td>Trend</td></tr> <tr><td>∧</td><td>1</td></tr> </table>	Current	Prior	51.85 %	44.90 %	Performance	Trend	∧	1
Current	Prior														
51.85 %	44.90 %														
Performance	Trend														
∧	1														
All Cause Readmissions Lower is better	-	3/2019	-	-	-	-	<table border="1"> <tr><td>Current</td><td>Prior</td></tr> <tr><td>-</td><td>-</td></tr> <tr><td>Performance</td><td>Trend</td></tr> <tr><td>-</td><td>-</td></tr> </table>	Current	Prior	-	-	Performance	Trend	-	-
Current	Prior														
-	-														
Performance	Trend														
-	-														
Well Child	12/2018	4/2019	< 81.9%	>= 81.9%	>= 86.59%	>= 89.81%	<table border="1"> <tr><td>Current</td><td>Prior</td></tr> <tr><td>90.20 %</td><td>89.36 %</td></tr> <tr><td>Performance</td><td>Trend</td></tr> <tr><td>∧</td><td>2</td></tr> </table>	Current	Prior	90.20 %	89.36 %	Performance	Trend	∧	2
Current	Prior														
90.20 %	89.36 %														
Performance	Trend														
∧	2														
IQI #33 Primary Cesarean Section Lower is better	-	4/2019	-	-	-	-	<table border="1"> <tr><td>Current</td><td>Prior</td></tr> <tr><td>-</td><td>-</td></tr> <tr><td>Performance</td><td>Trend</td></tr> <tr><td>-</td><td>-</td></tr> </table>	Current	Prior	-	-	Performance	Trend	-	-
Current	Prior														
-	-														
Performance	Trend														
-	-														
Postpartum Hemorrhage Lower is better	-	4/2019	-	-	-	-	<table border="1"> <tr><td>Current</td><td>Prior</td></tr> <tr><td>-</td><td>-</td></tr> <tr><td>Performance</td><td>Trend</td></tr> <tr><td>-</td><td>-</td></tr> </table>	Current	Prior	-	-	Performance	Trend	-	-
Current	Prior														
-	-														
Performance	Trend														
-	-														
Unexpected Newborn Complication #716 Lower is better	-	4/2019	-	-	-	-	<table border="1"> <tr><td>Current</td><td>Prior</td></tr> <tr><td>-</td><td>-</td></tr> <tr><td>Performance</td><td>Trend</td></tr> <tr><td>-</td><td>-</td></tr> </table>	Current	Prior	-	-	Performance	Trend	-	-
Current	Prior														
-	-														
Performance	Trend														
-	-														

Part E: P4I Measures (16 of 17)

Better Care- Improve Comprehensive Primary Care

Measure	Data As Of	Next Refresh	Red	Yellow	Green	Blue	AF-C-45th MEDGRP-PATRICK
24 Hour Appts Lower is better	2/2019	4/2019	>1.50 Days	<=1.5 Days	<=1 Days	<=0.83 Days	Current ^A 0.87 Prior ^B 0.76 Performance Trend 1
Future Appts Lower is better	2/2019	4/2019	>8 Days	<=8 Days	<=7 Days	<=2.3 Days	Current ^A 4.89 Prior ^B 5.45 Performance Trend 1
PC Leakage (Recap) Lower is better	12/2018	5/2019	>= 12.00%	< 12.00%	<= 8.00%	<= 3.00%	Current ^A 21.25 % Prior ^B 19.95 % Performance Trend 2
PCM Continuity	2/2019	4/2019	< 55%	>= 55%	>= 65%	>= 75%	Current ^A 74.01 % Prior ^B 79.87 % Performance Trend 2

Better Care- Optimize & Standardize Access

Measure	Data As Of	Next Refresh	Red	Yellow	Green	Blue	AF-C-45th MEDGRP-PATRICK
SM Enrollment	2/2019	4/2019	<37%	>=37%	>=50%	>=75%	Current ^A 51.64 % Prior ^B 51.17 % Performance Trend 9
SM Response Time 1 Day	2/2019	4/2019	<70%	>=70%	>=80%	>=87%	Current ^A 82.55 % Prior ^B 80.10 % Performance Trend 2

Getting Care When Needed	9/2018	3/2019	<81.20%	>=81.20%	>=84.40%	>=87.20%	Current ^A 75.98 % Prior ^B 81.12 % Performance Trend 2
Specialty: Referral to Book Lower is better	12/2018	4/2019	>4 Days	<=4 Days	<=3 Days	<=1 Day	Current ^A 3.86 Prior ^B 4.10 Performance Trend 1
Specialty: Booked to Appt Lower is better	12/2018	4/2019	>24 Days	<=24 Days	<=15 Days	<=7.5 Days	Current ^A 13.99 Prior ^B 14.23 Performance Trend 1
Amb Specialty Care Leakage Lower is better	12/2018	4/2019	> 23.7%	<= 23.7%	<= 10.7%	<= 2.0%	Current ^A 51.2 % Prior ^B 51.6 % Performance Trend 6
AD: Days To Primary Care Lower is better	12/2018	3/2019	>1.5 Days	<=1.5 Days	<=1 Days	<=0.83 Days	Current ^A 0.52 Prior ^B 0.31 Performance Trend 1
AD: Days To Specialty Care Lower is better	12/2018	3/2019	>24 Days	<=24 Days	<=15 Days	<=7.5 Days	Current ^A 10.77 Prior ^B 14.74 Performance Trend 1
MEB Stage Timeliness	-	4/2019	-	-	-	-	Current ^A - Prior ^B - Performance Trend -

Part E: P4I Measures (17 of 17)

Better Care - Improve Regulatory Compliance

Measure	Data As Of	Next Refresh	Red	Yellow	Green	Blue	AF-C-45th MEDGRP-PATRICK	Current	Prior
ACGME Accreditation Status	-	9/2019	-	-	-	-	-	-	-
Accreditation for DoD Clinical Laboratories	-	3/2019	-	-	-	-	-	-	-
Joint Commission Accreditation	-	3/2019	-	-	-	-	-	-	-

Lower Cost - Improve Stewardship

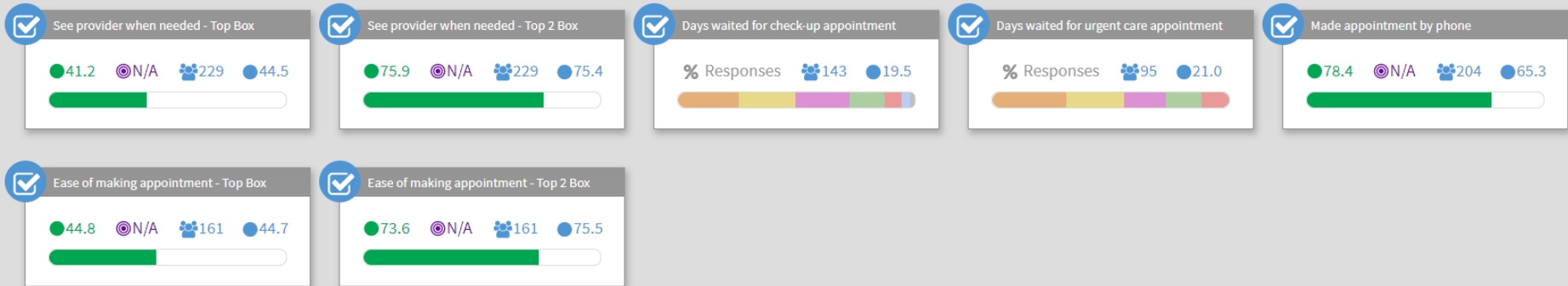
Measure	Data As Of	Next Refresh	Red	Yellow	Green	Blue	AF-C-45th MEDGRP-PATRICK	Current	Prior
PMPM Lower is better	9/2018	5/2019	> 3.20%	-	<= 3.20%	<= 0.00%	0.59 %	-0.63 %	1
Total Purchased Care Cost Lower is better	12/2018	4/2019	> FY Target	-	<= FY Target	<= Next FY Target	\$5.77M	\$6.15M	2

Private Sector Care Cost Lower is better	9/2018	5/2019	> 3.20%	-	<= 3.20%	<= 0.00%	-2.16 %	-3.55 %	1
Total Empanelment	2/2019	4/2019	< 0.00%	-	< 5.00% but >= 0.00%	>= 5.00%	-1.6 %	-1.0 %	4
Pharmacy Percent Retail Lower is better	12/2018	4/2019	> 30%	-	<= 30%	<=25%	30.0 %	30.0 %	2
AD: Spec Prov Efficiency	9/2018	4/2019	<61%	>=61%	<79%	>=79%	0	0	4
Overall Occ Rate (US)	-	4/2019	-	-	-	-	-	-	-
ICU Occ Rate (US)	-	4/2019	-	-	-	-	-	-	-
ESA Benefit	-	6/2019	-	-	-	-	-	-	-

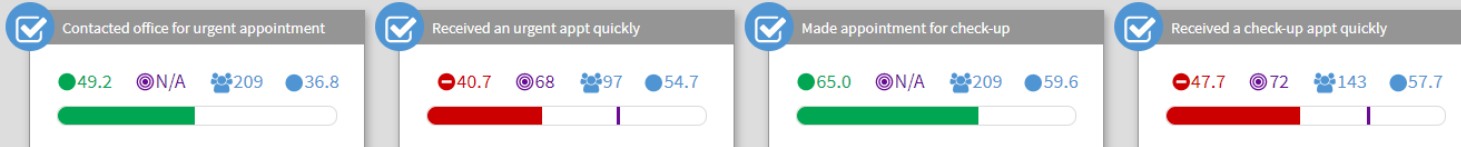
Part F: JOES-C 12-months Rolling Data (1 of 2)

AF-C-45th MEDGRP- Patrick Direct Care

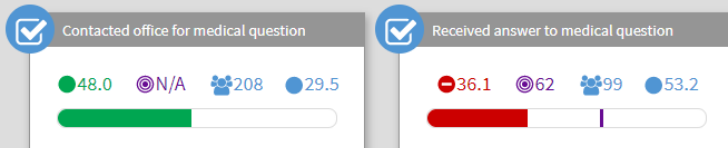
Access to Provider



Appointment



Contact Office



Part G: MTF Mission Brief

45th Medical Group



Integrity - Service - Excellence

Mission Brief





Priorities & Commitments



PRIORITIES & COMMITMENTS



100% MISSION SUCCESS

- Disciplined and Safe Execution
- Full Spectrum Support

SHAPE THE FUTURE

- Drive to Forty-Eight
- Be Bold, Be Flexible, Be Creative
- Embrace Change

INVEST IN PEOPLE

- Foster a Culture of Respect
- Deliberately Develop Our Personnel
- Take Care of Our Families

Breaking Barriers ... Since 1947



45th Medical Group



Focus

Base our daily decisions and actions on mission, respect and accountability.

Mission

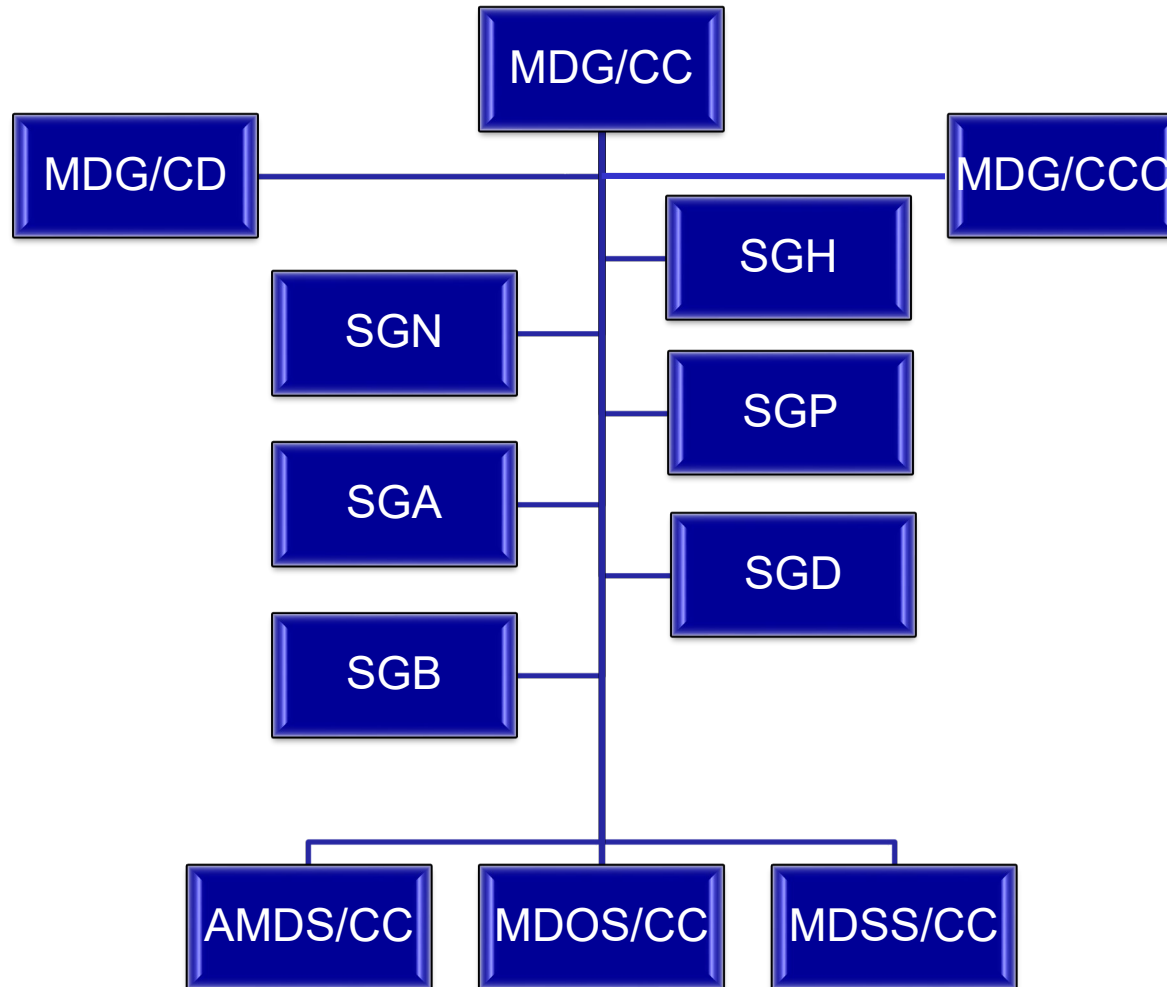
*Ensure a medically ready force and a ready medical force.
Deploying is our primary job. Home station healthcare increases our competency.*

Chant

“Prepare to Shock...Medics Rock!”



Organization





Medical Group Leadership



45 MDG Commander
Col Gigi Simko



MDG Superintendent
CMSgt Mario Aceves-Fonseca



First Sergeant
SMSgt Kristopher Kiger

Breaking Barriers ... Since 1947



Medical Operations Squadron



**Medical Operations
Squadron Commander**
Lt Col Cang Bui



**Medical Operations
Squadron Superintendent**
SMSgt Denisse Portunato

Breaking Barriers ... Since 1947



Medical Support Squadron



**Medical Support
Squadron Commander**
Lt Col Tara E. Lovell



**Medical Support
Squadron Superintendent**
SMSgt Bonnie Selman

Breaking Barriers ... Since 1947



Aerospace Medicine Squadron



**Aerospace Medicine
Squadron Commander**
(Deputy Commander)
Lt Col Ian C. Rybczynski



**Aerospace Medicine
Squadron Superintendent**
SMSgt Leonel Gonzalez

Breaking Barriers ... Since 1947



45 MDG “3-Letters”



Chief of Medical Staff
SGH
Maj David Dy



Chief Nurse
SGN
Lt Col Jimmy Scott



Administrator
SGA
Lt Col Tara Lovell



**Biomedical Sciences
Corps Executive**
SGB
Lt Col Clarence Gagni



Chief of Aerospace Medicine
SGP
LTC Paul Newbold



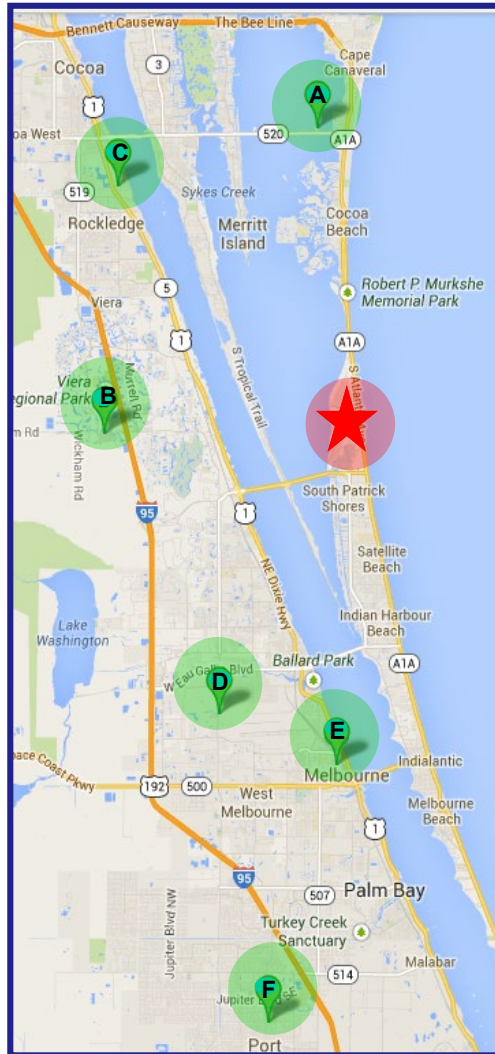
Dental Corps Chief
SGD
Maj Tanya Berg



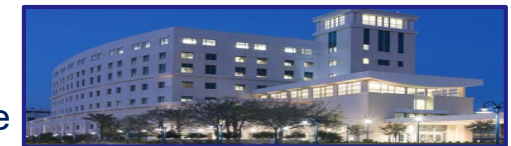
Chief of Quality
SGHQ
Mr. Randy Wehrung



Strategic Partners Inpatient & After-Hours Care



- A. Cape Canaveral Hospital
 - 12 miles/23 minutes from East Gate
- B. Viera Hospital
 - 12.7 miles/18 minutes from South Gate
- C. Rockledge Regional Medical Center
Rockledge
 - 16 miles/21 minutes from South Gate
- D. Melbourne Regional Medical Center
Melbourne
 - 13.5 miles/26 minutes from South Gate
- E. Holmes Regional Medical Center
 - Level II Trauma Center
 - 16 miles/25 Minutes from South Gate
- F. Palm Bay Emergency
 - 27 miles/29 Minutes from South Gate





Wing and Mission Partners



Breaking Barriers ... Since 1947



Medical Support



-
- **Air Force Technical Applications Center (AFTAC)**
 - **2nd Space Operations Squadron (2 SOPS), Detachment 1**
 - **17th Test Squadron, Detachment 3 (17 TS, Det 3)**
 - **114th Range Operations Squadron (114 ROPS), Florida Air National Guard**
 - **333rd Recruiting Squadron (333 RCS)**
 - **605th Test & Evaluations Squadron, Detachment 2 (Det. 2, 605 TS)**
 - **920th Rescue Wing, Air Force Reserve Command**
 - **Defense Equal Opportunity Management Institute (DEOMI)**



Medical Support



- **Department of State**
- **Joint STARS Test Force**
- **Military Sealift Command**
- **National Aeronautics and Space Administration (NASA)**
- **Naval Ordnance Test Unit (NOTU)**
- **National Geospatial-Intelligence Agency (NGA-ERNST)**
- **U.S. Coast Guard Armory, Cape Canaveral**



Areas of Responsibility

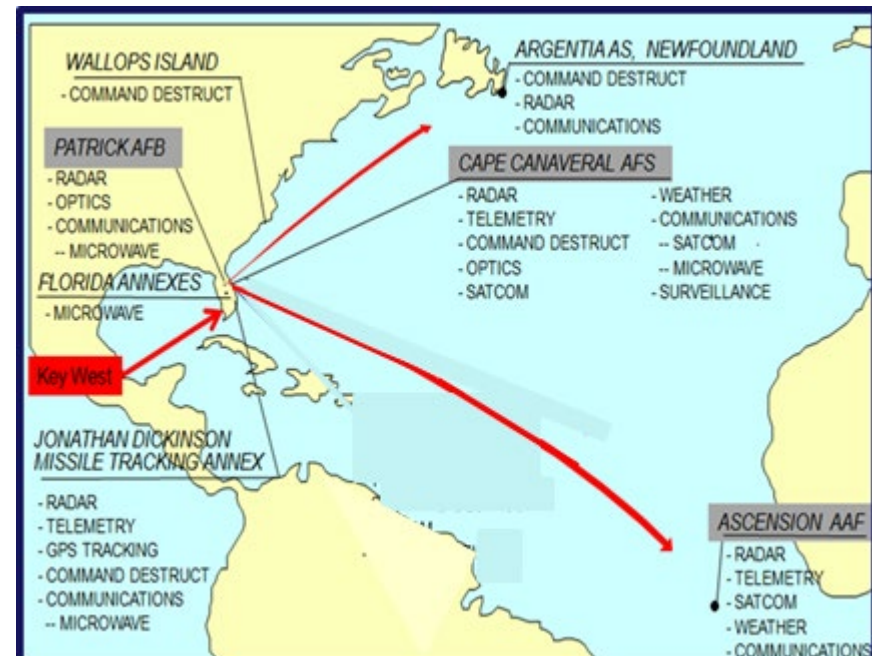


■ Ascension Air Station

- Provides Staff Assistance Visits on anything clinical, Public Health, Occupational Health, and Bioenvironmental Engineering
- Provides support in logistics and Bio Medical equipment

■ 200+ Geographically Separated Units – 1,100 personnel

- Public Health Assessments
- Member Profiles
- Special Needs Identification & Assignment Coordinator (SNIAC) and EFMP
- Medical Travel Orders
- Medical Aero-evacuations
- Medical Evaluation Board





Questions?



"TRUSTED CARE ANYWHERE"

Breaking Barriers ... Since 1947

Part H: MTF Portfolio (Full)

45TH MEDICAL GROUP – PATRICK

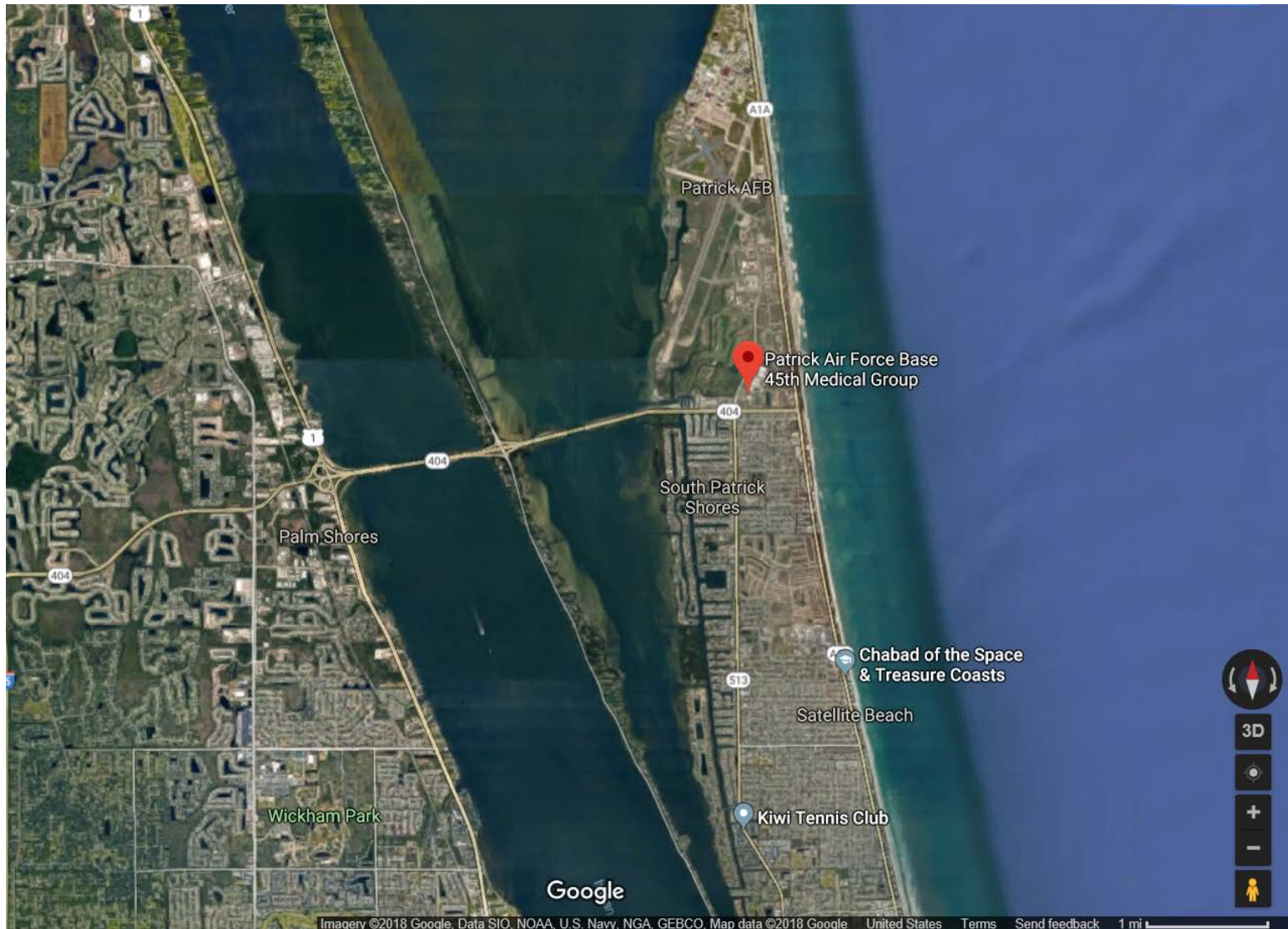


Table of Contents

<u>Section</u>	<u>Slide #</u>
Overview.....	<u>3</u>
Inpatient Care.....	<u>4</u>
Ambulatory Care.....	<u>7</u>
Pharmacy.....	<u>21</u>
Radiology.....	<u>28</u>
Laboratory.....	<u>33</u>
Staffing.....	<u>38</u>
Eligible Population and Enrollment.....	<u>43</u>

Patrick – Overview

❑ # of Buildings and Min/Max Age¹: 5, 10 / 53

❑ Avg # of Encounters per day²:

Tmt DMIS ID	Tmt DMIS ID Name	2014	2015	2016	2017	2018
0046	AF-C-45th MEDGRP-PATRICK	483	498	497	467	441

❑ ER or Immediate Care³: No

¹ Source: DHA / Facilities Management Division

² Source: M2 CAPER, MEPRS B only, ER (BIA) and Immediate Care (BHI) omitted, Monday-Friday only

³ Source: M2 CAPER, ER (BIA) or Immediate Care (BHI) coded

Inpatient Care

Patrick – Prime/Plus Enrollment Inpatient Care¹

0046 AF-C-45th MEDGRP-PATRICK Prime/Plus Enrollees Treated in Direct Care										
Product Line	Tmt DMIS ID Name	FY 2016			FY 2017			FY 2018		
		DC Disps	DC CMI	DC Cost per RWP ³	DC Disps	DC CMI	DC Cost per RWP ³	DC Disps	DC CMI	DC Cost per RWP ³
MED	AF-H-96th MEDGRP-EGLIN	2	0.3768	\$ 7,911				1	0.6922	\$ 6,693
NEWBORN	AF-MC-88th MEDGRP-WRIGHT-PAT	1	0.1193	\$ 12,275				2	0.2203	\$ 17,538
Total/Overall		9	0.4639	\$ 22,540	4	1.9850	\$ 11,642	11	0.5779	\$ 11,965

0046 AF-C-45th MEDGRP-PATRICK Prime/Plus Enrollees Treated in Purchased Care									
Product Line	FY 2016			FY 2017			FY 2018		
	PC Adms	PC CMI	PC Paid per RWP ²	PC Adms	PC CMI	PC Paid per RWP ²	PC Adms	PC CMI	PC Paid per RWP ²
MED	275	0.9272	\$ 8,257	259	0.9333	\$ 7,833	208	0.8792	\$ 9,603
SURG	246	2.5728	\$ 9,099	182	2.4839	\$ 9,571	130	2.6946	\$ 9,741
OB	138	0.5425	\$ 8,882	116	0.5678	\$ 8,826	110	0.5900	\$ 9,230
NEWBORN	121	0.3127	\$ 8,084	99	0.2361	\$ 8,682	88	0.2921	\$ 8,601
MH	7	0.5266	\$ 7,077	4	0.5035	\$ 6,560	5	0.6954	\$ 6,674
Total/Overall	787	1.2761	\$ 8,823	660	1.1895	\$ 8,939	541	1.1594	\$ 9,584

¹ Source: Direct Care: MDR SIDR (Detail truncated for low volume; Total/Overall includes truncated volume); Purchased Care: MDR TED-Institutional. Prime/Plus enrolled to the Parent Site. Includes "fix" to newborn enrollment information.

² Purchased Care includes 13% increase for overhead burdening.

³ FY16-17 Direct Care costs based on respective FY MEPRS expenses; FY18 based on FY17 costs, adjusted for inflation.

Patrick – Prime/Plus Enrollment Inpatient Care¹ – AD Only

0046 AF-C-45th MEDGRP-PATRICK Prime/Plus Enrollees Treated in Direct Care - AD ONLY										
Product Line	Tmt DMIS ID Name	FY 2016			FY 2017			FY 2018		
		DC Disps	DC CMI	DC Cost per RWP ³	DC Disps	DC CMI	DC Cost per RWP ³	DC Disps	DC CMI	DC Cost per RWP ³
MED	LANDSTUHL REGIONAL MEDCEN	1	0.9219	\$ 22,334						
	NH GUANTANAMO BAY	1	0.3768	\$ 35,637						
	NMC PORTSMOUTH							1	0.6090	\$ 15,912
	WALTER REED NATL MIL MED CNTR	1	0.9219	\$ 34,372	1	1.8095	\$ 26,947			
SURG	NH JACKSONVILLE				1	1.7151	\$ 7,007			
	NMC PORTSMOUTH				1	3.8375	\$ 7,350			
OB	AF-MC-88th MEDGRP-WRIGHT-PAT	1	0.4163	\$ 31,147				1	0.4235	\$ 24,342
MH	NMC CAMP LEJEUNE	1	0.1788	\$ 10,755						
Total/Overall		5	0.5631	\$ 28,623	3	2.4540	\$ 12,087	2	0.5163	\$ 19,370

0046 AF-C-45th MEDGRP-PATRICK Prime/Plus Enrollees Treated in Purchased Care - AD ONLY									
Product Line	FY 2016			FY 2017			FY 2018		
	PC Adms	PC CMI	PC Paid per RWP ²	PC Adms	PC CMI	PC Paid per RWP ²	PC Adms	PC CMI	PC Paid per RWP ²
MED	18	0.7839	\$ 7,412	18	0.6792	\$ 7,779	24	0.8906	\$ 7,878
SURG	24	2.5153	\$ 10,247	14	2.2131	\$ 9,843	10	1.9966	\$ 8,697
OB	13	0.4858	\$ 9,661	22	0.4905	\$ 9,287	16	0.5746	\$ 9,510
MH	1	0.6643	\$ 8,252	0	0.0000	\$ 0	0	0.0000	\$ 0
Total/Overall	56	1.4546	\$ 9,694	54	1.0000	\$ 9,265	50	1.0107	\$ 8,498

¹ Source: Direct Care: MDR SIDR (Detail truncated for low volume; Total/Overall includes truncated volume); Purchased Care: MDR TED-Institutional. Prime/Plus enrolled to the Parent Site. Includes "fix" to newborn enrollment information.

² Purchased Care includes 13% increase for overhead burdening.

³ FY16-17 Direct Care costs based on respective FY MEPRS expenses; FY18 based on FY17 costs, adjusted for inflation.

Ambulatory Care

Patrick – Direct Care Appointments by Appointment Status¹

Appointment Status	0046 - AF-C-45th MEDGRP-PATRICK					
	2016 - # Appts	2016 - % Total	2017 - # Appts	2017 - % Total	2018 - # Appts	2018 - % Total
1 Pending			33	0%	5	0%
2 Kept	48,405	33%	43,016	31%	47,928	36%
3 Canceled	13,419	9%	14,721	11%	15,481	12%
4 No Show	4,219	3%	3,871	3%	4,303	3%
5 Walk In	5,730	4%	5,293	4%	4,932	4%
6 Sick Call	2	0%	1	0%	5	0%
7 Telcon	74,262	51%	69,122	51%	60,713	45%
8 LWOBS	250	0%	196	0%	213	0%
9 Admin	45	0%	12	0%	60	0%
10 Occ-Svc	143	0%	585	0%	258	0%
Grand Total	146,475		136,850		133,898	

¹ Source: M2 Appointment, includes MEPRS Codes B**, FBI, and FBN.

Patrick – Direct Care Appointments by Appointment Type¹

Appt Type Group	0046 - AF-C-45th MEDGRP-PATRICK					
	2016 - # Appts	2016 - % Total	2017 - # Appts	2017 - % Total	2018 - # Appts	2018 - % Total
24HR	14,566	10%	14,264	10%	11,371	8%
ACUTE	653	0%	199	0%	71	0%
FTR	47,261	32%	41,624	30%	40,614	30%
GRP	438	0%	203	0%	319	0%
N-MTF			1	0%	5	0%
PCM	16	0%	2	0%		
PROC	3,571	2%	2,934	2%	4,195	3%
ROUT	291	0%	392	0%	254	0%
SPEC	1,716	1%	3,989	3%	12,612	9%
T-CON*	76,511	52%	71,664	52%	62,821	47%
UNK			1	0%		
WELL	1,452	1%	1,577	1%	1,636	1%
Grand Total	146,475		136,850		133,898	

¹ Source: M2 Appointment, includes MEPRS Codes B**, FBI, and FBN.

Patrick – FY18 Direct Care Ambulatory Encounters¹

PRODUCT LINE	0046 - AF-C-45th MEDGRP-PATRICK			
	Seen	Telcon	Total	% of Total
IMSUB	69	1	70	0.06%
MH	4,822	2,109	6,931	6.10%
OBGYN	1,612	1,095	2,707	2.38%
OPTOM	1,546	10	1,556	1.37%
ORTHO	4,959	11	4,970	4.38%
OTHER	337	6	343	0.30%
PC	39,423	57,571	96,994	85.40%
TOTAL	52,768	60,803	113,571	

¹ Source: M2 CAPER, includes MEPRS Codes B**, FBI, and FBN.

Patrick – Direct Care Ambulatory Surgery¹

This facility did not report any workload coded Same Day Surgery.

¹ Source: M2 CAPER, based on the Same Day Surgery Flag. Based on Parent Tmt DMIS ID.

² Based on the Optum grouping (e.g., CPT codes 20000-29999 are for the Musculoskeletal System). Only the 1st procedural CPT investigated.

Patrick – FY18 Direct Care Ambulatory Surgery¹

Top 20 Procedure Codes

This facility did not report any workload coded Same Day Surgery.

¹ Source: M2 CAPER, based on the Same Day Surgery Flag. Based on Parent Tmt DMIS ID. Only Procedure 1 analyzed. Prov Agg Total RVU is for the entire encounter.

Patrick – Ambulatory Workload and Cost¹

DC = work performed in the MTF; PC = work performed by a provider within the site's PRISM (parent)

	Product Line	Encounters/Services		Average RVU		Cost/Paid per RVU	
		DC	PC	DC	PC	DC	PC ²
		Encounters	Services	RVU / Encounters	RVU / Services	Full Cost / RVU	Amount Paid / RVU
FY 2018 ³	PC	96,994	172,380	0.94	0.97	\$ 161	\$ 50
	OBGYN	2,707	10,280	1.75	1.89	\$ 161	\$ 56
	MH	6,931	69,205	1.96	0.96	\$ 154	\$ 81
	OTHER	6,939	368,071	2.71	1.05	\$ 57	\$ 55
	TOTAL	113,571	619,936	1.13	1.03	\$ 145	\$ 56
FY 2017 ³	PC	101,367	195,182	0.93	0.95	\$ 160	\$ 51
	OBGYN	2,075	11,885	1.94	1.93	\$ 162	\$ 53
	MH	8,510	63,901	1.93	0.97	\$ 128	\$ 89
	OTHER	5,979	380,021	2.85	0.99	\$ 55	\$ 56
	TOTAL	117,931	650,989	1.12	0.99	\$ 142	\$ 58
FY 2016 ³	PC	109,659	186,295	0.94	0.91	\$ 160	\$ 58
	OBGYN	2,529	14,779	1.90	1.73	\$ 149	\$ 60
	MH	9,519	51,135	1.91	1.14	\$ 119	\$ 92
	OTHER	6,791	385,163	2.44	0.97	\$ 60	\$ 60
	TOTAL	128,498	637,372	1.11	0.98	\$ 143	\$ 63

¹ Source: DC = M2 CAPER; PC = MDR TED Non-Institutional (using "ambulatory" defined by eMSM workgroup; drug costs included; OHI omitted). Includes all beneficiaries. Use caution when making comparisons between DC and PC. Encounters and Services are not comparable. They are provided to give a sense of volume.

² Purchased Care includes 13% increase for overhead burdening.

³ FY16-17 Direct Care costs based on respective FY MEPRS expenses; FY18 based on FY17 costs, adjusted for inflation.

Patrick – FY18 Direct and Purchased Care Ambulatory Workload by Enrollment Category¹

Work performed by Patrick (parent)³:

AF-C-45th MEDGRP-PATRICK - FY 2018 DIRECT CARE AMBULATORY WORKLOAD																					
Product Line	Prime-Site			Reliant			Prime-Other			Plus			TFL			Not Enrolled			Total		
	Encs	Avg RVU	Cost/RVU	Encs	Avg RVU	Cost/RVU	Encs	Avg RVU	Cost/RVU	Encs	Avg RVU	Cost/RVU	Encs	Avg RVU	Cost/RVU	Encs	Avg RVU	Cost/RVU	Encs	Avg RVU	Cost/RVU
PC	89,017	0.90	\$ 160	530	1.18	\$ 169	1,753	1.19	\$ 164	21	1.18	\$ 150	3,879	1.47	\$ 170	1,794	1.66	\$ 161	96,994	0.94	\$ 161
OBGYN	2,534	1.77	\$ 161	23	1.68	\$ 166	54	1.27	\$ 148	4	1.96	\$ 164	17	1.73	\$ 162	75	1.27	\$ 167	2,707	1.75	\$ 161
MH	5,735	2.01	\$ 149	208	1.18	\$ 329	719	1.65	\$ 159	1	0.39	\$ 1,069	2	0.87	\$ 131	266	2.35	\$ 157	6,931	1.96	\$ 154
OTHER	6,354	2.63	\$ 57	142	3.30	\$ 57	184	3.97	\$ 48	0	0.00	\$ 0	86	1.65	\$ 59	173	4.38	\$ 53	6,939	2.71	\$ 57
TOTAL	103,640	1.09	\$ 144	903	1.52	\$ 159	2,710	1.50	\$ 142	26	1.27	\$ 164	3,984	1.47	\$ 167	2,308	1.93	\$ 142	113,571	1.13	\$ 145

↑
52% MCSC

Work performed by a provider within Patrick's PRISM (parent)²:

AF-C-45th MEDGRP-PATRICK - FY 2018 PURCHASED CARE AMBULATORY WORKLOAD																					
Product Line	Prime-Site			Reliant			Prime-Other			Plus			TFL			Not Enrolled			Total		
	Svcs	Avg RVU	Paid/RVU	Svcs	Avg RVU	Paid/RVU	Svcs	Avg RVU	Paid/RVU	Svcs	Avg RVU	Paid/RVU	Svcs	Avg RVU	Paid/RVU	Svcs	Avg RVU	Paid/RVU	Svcs	Avg RVU	Paid/RVU
PC	61,076	0.82	\$ 56	137	2.00	\$ 57	52,193	1.07	\$ 49	9	2.12	\$ 37	8,377	1.51	\$ 49	50,588	0.95	\$ 44	172,380	0.97	\$ 50
OBGYN	5,797	1.60	\$ 56	10	2.23	\$ 58	1,977	2.39	\$ 57	0	0.00	\$ 0	388	0.51	\$ 49	2,108	2.49	\$ 54	10,280	1.89	\$ 56
MH	27,801	1.23	\$ 68	21	2.73	\$ 49	22,067	0.75	\$ 92	3	3.46	\$ 23	308	2.73	\$ 37	19,005	0.76	\$ 104	69,205	0.96	\$ 81
OTHER	208,815	1.02	\$ 57	420	1.95	\$ 67	78,147	1.14	\$ 55	16	1.33	\$ 43	11,762	1.24	\$ 47	68,911	0.99	\$ 50	368,071	1.05	\$ 55
TOTAL	303,489	1.01	\$ 58	588	1.99	\$ 64	154,384	1.08	\$ 57	28	1.81	\$ 37	20,835	1.36	\$ 48	140,612	0.97	\$ 54	619,936	1.03	\$ 56

↑
97% MCSC

¹ Source: DC = M2 CAPER; PC = MDR TED Non-Institutional (using "ambulatory" defined by eMSM workgroup; drug costs included; OHI omitted). Includes all beneficiaries. Use caution when making comparisons between DC and PC. Encounters and Services are not comparable. They are provided to give a sense of volume.

² Purchased Care includes 13% increase for overhead burdening.

³ Direct Care costs based on FY17 MEPRS expenses, adjusted for inflation.

Patrick – FY17 Direct and Purchased Care Ambulatory Workload by Enrollment Category¹

Work performed by Patrick (parent)³:

AF-C-45th MEDGRP-PATRICK - FY 2017 DIRECT CARE AMBULATORY WORKLOAD																					
Product Line	Prime-Site			Reliant			Prime-Other			Plus			TFL			Not Enrolled			Total		
	Encs	Avg RVU	Cost/RVU	Encs	Avg RVU	Cost/RVU	Encs	Avg RVU	Cost/RVU	Encs	Avg RVU	Cost/RVU	Encs	Avg RVU	Cost/RVU	Encs	Avg RVU	Cost/RVU	Encs	Avg RVU	Cost/RVU
PC	93,386	0.88	\$ 159	509	1.31	\$ 166	1,365	1.30	\$ 161	15	0.78	\$ 179	4,025	1.45	\$ 162	2,067	1.75	\$ 154	101,367	0.93	\$ 160
OBGYN	1,914	1.97	\$ 162	15	1.92	\$ 168	67	1.72	\$ 157	0	0.00	\$ 0	17	1.53	\$ 146	62	1.42	\$ 173	2,075	1.94	\$ 162
MH	6,936	1.98	\$ 123	225	2.09	\$ 139	900	1.52	\$ 167	6	2.63	\$ 172	6	1.77	\$ 165	437	2.02	\$ 150	8,510	1.93	\$ 128
OTHER	5,423	2.79	\$ 55	162	2.80	\$ 58	160	4.30	\$ 48	1	7.54	\$ 48	94	1.28	\$ 49	139	4.52	\$ 51	5,979	2.85	\$ 55
TOTAL	107,659	1.07	\$ 141	911	1.78	\$ 128	2,492	1.58	\$ 143	22	1.59	\$ 148	4,142	1.45	\$ 160	2,705	1.93	\$ 141	117,931	1.12	\$ 142

↑
61% MCSC

Work performed by a provider within Patrick's PRISM (parent)²:

AF-C-45th MEDGRP-PATRICK - FY 2017 PURCHASED CARE AMBULATORY WORKLOAD																					
Product Line	Prime-Site			Reliant			Prime-Other			Plus			TFL			Not Enrolled			Total		
	Svcs	Avg RVU	Paid/RVU	Svcs	Avg RVU	Paid/RVU	Svcs	Avg RVU	Paid/RVU	Svcs	Avg RVU	Paid/RVU	Svcs	Avg RVU	Paid/RVU	Svcs	Avg RVU	Paid/RVU	Svcs	Avg RVU	Paid/RVU
PC	84,895	0.71	\$ 56	404	1.01	\$ 55	50,943	1.05	\$ 51	23	1.91	\$ 41	14,120	1.71	\$ 51	44,797	1.06	\$ 46	195,182	0.95	\$ 51
OBGYN	5,325	2.18	\$ 55	4	3.17	\$ 56	3,027	1.71	\$ 55	1	3.44	\$ 58	510	0.87	\$ 37	3,018	1.91	\$ 50	11,885	1.93	\$ 53
MH	32,821	0.96	\$ 93	0	0.00	\$ 0	15,212	1.05	\$ 81	0	0.00	\$ 0	372	2.60	\$ 43	15,496	0.87	\$ 91	63,901	0.97	\$ 89
OTHER	228,968	0.92	\$ 58	380	1.62	\$ 54	73,197	1.12	\$ 56	6	2.11	\$ 32	16,263	1.29	\$ 50	61,207	1.02	\$ 52	380,021	0.99	\$ 56
TOTAL	352,009	0.89	\$ 61	788	1.32	\$ 54	142,379	1.10	\$ 57	30	2.00	\$ 40	31,265	1.49	\$ 50	124,518	1.04	\$ 54	650,989	0.99	\$ 58

↑
98% MCSC

¹ Source: DC = M2 CAPER; PC = MDR TED Non-Institutional (using "ambulatory" defined by eMSM workgroup; drug costs included; OHI omitted). Includes all beneficiaries. Use caution when making comparisons between DC and PC. Encounters and Services are not comparable. They are provided to give a sense of volume.

² Purchased Care includes 13% increase for overhead burdening.

³ Direct Care costs based on FY17 MEPRS expenses.

Patrick – Prime Enrollment Ambulatory Care¹ – DIRECT CARE

Tmt Parent Patrick?	Product Line	Tmt Parent DMIS ID Name	2017					2018				
			Encounters	Enh Total RVU	Full Cost ²	Avg RVU	Cost ² /RVU	Encounters	Enh Total RVU	Full Cost ²	Avg RVU	Cost ² /RVU
YES	PC	AF-C-45th MEDGRP-PATRICK	93,386	82,259.11	\$ 13,119,443	0.88	\$ 159	89,017	79,806.11	\$ 12,806,531	0.90	\$ 160
	OBGYN	AF-C-45th MEDGRP-PATRICK	1,914	3,769.20	\$ 610,080	1.97	\$ 162	2,534	4,485.16	\$ 722,563	1.77	\$ 161
	MH	AF-C-45th MEDGRP-PATRICK	6,936	13,708.52	\$ 1,682,818	1.98	\$ 123	5,735	11,500.66	\$ 1,713,288	2.01	\$ 149
	OTHER	AF-C-45th MEDGRP-PATRICK	5,423	15,125.62	\$ 832,761	2.79	\$ 55	6,354	16,684.55	\$ 959,117	2.63	\$ 57
Yes Total			107,659	114,862.45	\$ 16,245,102	1.07	\$ 141	103,640	112,476.48	\$ 16,201,499	1.09	\$ 144
NO	OTHER	NH JACKSONVILLE	75	197.29	\$ 28,694	2.63	\$ 145	113	292.23	\$ 27,569	2.59	\$ 94
No Total			1,313	2,746.71	\$ 403,068	2.09	\$ 147	1,278	2,928.32	\$ 435,734	2.29	\$ 149
Total/Overall			108,972	117,609.16	\$ 16,648,170	1.08	\$ 142	104,918	115,404.80	\$ 16,637,233	1.10	\$ 144

¹ Source: Direct Care: M2 CAPER, Prime Enrolled, MEPRS B, FBI, FBN. Data truncated for small volumes. Use caution when making comparisons between DC and PC. Encounters and Services are not comparable. They are provided to give a sense of volume.

² Direct Care costs based on FY17 MEPRS expenses, with FY18 adjusted for inflation.

Patrick – Prime Enrollment Ambulatory Care¹ – PURCHASED CARE

Product Line	2017					2018				
	# Svcs	Enh Total RVU	Amt Paid ²	Avg RVU	Paid ² / RVU	# Svcs	Enh Total RVU	Amt Paid ²	Avg RVU	Paid ² / RVU
PC	90,460	67,850.64	\$ 3,939,073	0.75	\$ 58	66,011	58,751.98	\$ 3,311,060	0.89	\$ 56
OBGYN	6,312	14,053.39	\$ 803,846	2.23	\$ 57	6,201	10,686.11	\$ 618,661	1.72	\$ 58
MH	35,238	34,343.48	\$ 3,311,280	0.97	\$ 96	29,757	37,368.59	\$ 2,608,440	1.26	\$ 70
OTHER	247,126	241,107.72	\$ 14,378,196	0.98	\$ 60	230,991	241,460.45	\$ 14,325,987	1.05	\$ 59
TOTAL	379,136	357,355.23	\$ 22,432,394	0.94	\$ 63	332,960	348,267.13	\$ 20,864,148	1.05	\$ 60

¹ Source: Purchased Care: MDR TED Non-institutional, Prime Enrolled to the Parent Site (using “ambulatory” defined by eMSM workgroup; drug costs included; OHI omitted). Use caution when making comparisons between DC and PC. Encounters and Services are not comparable. They are provided to give a sense of volume.

² Purchased Care includes 13% increase for overhead burdening.

Patrick – Direct Care ER/Immed. Care (MEPRS BIA/BHI)¹

This facility did not report any workload in BIA or BHI.

¹ Source: M2 CAPER. Based on Treatment Parent DMIS ID. BIA=Emergency Room (ER); BHI=Immediate Care (IC).

Patrick – Direct Care ER/IC Disposition Code²

This facility did not report any workload in BIA or BHI.

¹ Numeric values and R are for outpatient encounters; alphanumeric A-G are for inpatient encounters.

² Source: M2 CAPER. Based on Treatment Parent DMIS ID. BIA=Emergency Room (ER); BHI=Immediate Care (IC).

Patrick – Direct Care ER/IC Top 15 Diagnosis Codes¹ (Reason for being seen)

This facility did not report any workload in BIA or BHI.

Pharmacy

Patrick – Direct Care Pharmacy¹ by Enrollment Group

PARENT 0046 AF-C-45th MEDGRP-PATRICK										
Enr Group	2017					2018				
	# Scripts	Days Supply	Full Cost	Cost / Script	Cost / Day	# Scripts	Days Supply	Full Cost	Cost / Script	Cost / Day
Prime-MTF	78,111	4,364,954	\$ 3,585,976	\$ 46	\$ 0.82	77,280	4,274,909	\$ 3,592,158	\$ 46	\$ 0.84
Prime-MCSC	21,890	1,539,447	\$ 1,266,674	\$ 58	\$ 0.82	22,460	1,545,602	\$ 1,199,831	\$ 53	\$ 0.78
Reliant	426	16,873	\$ 21,201	\$ 50	\$ 1.26	374	13,213	\$ 11,027	\$ 29	\$ 0.83
Plus	10,085	727,164	\$ 436,104	\$ 43	\$ 0.60	9,673	707,786	\$ 414,864	\$ 43	\$ 0.59
Overseas Prime	10	662	\$ 373	\$ 37	\$ 0.56	3	240	\$ 51	\$ 17	\$ 0.21
Desig Prov	0	0	\$ 0	\$ 0	\$ 0.00	18	1,110	\$ 1,088	\$ 60	\$ 0.98
Other	225,613	17,275,410	\$ 11,572,443	\$ 51	\$ 0.67	224,013	17,103,999	\$ 11,130,710	\$ 50	\$ 0.65
Grand Total	336,135	23,924,510	\$ 16,882,771	\$ 50	\$ 0.71	333,821	23,646,859	\$ 16,349,729	\$ 49	\$ 0.69

¹ Source: M2 PDTS, Source System D (Direct Care) and C (Clinician Administered Drug).

Patrick – Direct Care Pharmacy¹ by Enrollment Group

0046 AF-C-45th MEDGRP-PATRICK										
Enr Group	2017					2018				
	# Scripts	Days Supply	Full Cost	Cost / Script	Cost / Day	# Scripts	Days Supply	Full Cost	Cost / Script	Cost / Day
Prime-MTF	78,111	4,364,954	\$ 3,585,976	\$ 46	\$ 0.82	77,280	4,274,909	\$ 3,592,158	\$ 46	\$ 0.84
Prime-MCSC	21,890	1,539,447	\$ 1,266,674	\$ 58	\$ 0.82	22,460	1,545,602	\$ 1,199,831	\$ 53	\$ 0.78
Reliant	426	16,873	\$ 21,201	\$ 50	\$ 1.26	374	13,213	\$ 11,027	\$ 29	\$ 0.83
Plus	10,085	727,164	\$ 436,104	\$ 43	\$ 0.60	9,673	707,786	\$ 414,864	\$ 43	\$ 0.59
Overseas Prime	10	662	\$ 373	\$ 37	\$ 0.56	3	240	\$ 51	\$ 17	\$ 0.21
Desig Prov	0	0	\$ 0	\$ 0	\$ 0.00	18	1,110	\$ 1,088	\$ 60	\$ 0.98
Other	225,613	17,275,410	\$ 11,572,443	\$ 51	\$ 0.67	224,013	17,103,999	\$ 11,130,710	\$ 50	\$ 0.65
Grand Total	336,135	23,924,510	\$ 16,882,771	\$ 50	\$ 0.71	333,821	23,646,859	\$ 16,349,729	\$ 49	\$ 0.69

¹ Source: M2 PDTS, Source System D (Direct Care) and C (Clinician Administered Drug).

Patrick – FY18 Direct Care Pharmacy

Top 20 Products Dispensed¹ by # of Scripts and Cost/Day

0046 AF-C-45th MEDGRP-PATRICK					
TOP 20 BASED ON VOLUME					
Product Name	Number of Scripts	Days Supply	Full Cost	Cost / script	Cost / Day
ATORVASTATIN CALCIUM	8,911	777,140	\$ 163,247	\$ 18	\$ 0.21
LEVOTHYROXINE SODIUM	7,668	669,473	\$ 159,209	\$ 21	\$ 0.24
SIMVASTATIN	7,568	666,245	\$ 128,048	\$ 17	\$ 0.19
ASPIRIN EC	7,103	623,774	\$ 97,987	\$ 14	\$ 0.16
LISINAPRIL	6,859	594,039	\$ 102,327	\$ 15	\$ 0.17
OMEPRAZOLE	6,619	551,414	\$ 134,931	\$ 20	\$ 0.24
AMLODIPINE BESYLATE	6,538	560,667	\$ 115,298	\$ 18	\$ 0.21
CRESTOR	5,270	463,592	\$ 138,013	\$ 26	\$ 0.30
FLUTICASON PROPIONATE	5,155	334,327	\$ 101,730	\$ 20	\$ 0.30
CETIRIZINE HCL	4,958	399,550	\$ 79,184	\$ 16	\$ 0.20
PANTOPRAZOLE SODIUM	4,780	404,134	\$ 118,205	\$ 25	\$ 0.29
TOPROL XL	4,001	343,582	\$ 105,363	\$ 26	\$ 0.31
SYNTHROID	3,871	335,697	\$ 79,661	\$ 21	\$ 0.24
HYDROCHLOROTHIAZIDE	3,607	308,137	\$ 54,099	\$ 15	\$ 0.18
FREESTYLE LITE TEST STRIPS	3,556	275,304	\$ 134,872	\$ 38	\$ 0.49
MONTELUKAST SODIUM	3,441	286,277	\$ 83,538	\$ 24	\$ 0.29
GABAPENTIN	3,163	222,592	\$ 89,288	\$ 28	\$ 0.40
ZETIA	3,113	276,678	\$ 336,993	\$ 108	\$ 1.22
CERTAVITE SENIOR-ANTIOXIDAN	3,020	270,215	\$ 47,140	\$ 16	\$ 0.17
PROAIR HFA	2,936	129,220	\$ 86,638	\$ 30	\$ 0.67

0046 AF-C-45th MEDGRP-PATRICK					
TOP 20 BASED ON COST PER DAY					
Product Name	Number of Scripts	Days Supply	Full Cost	Cost / script	Cost / Day
EMVERM	1	3	\$ 2,258	\$ 2,258	\$ 752.77
SPRYCEL	13	360	\$ 71,092	\$ 5,469	\$ 197.48
TECFIDERA	21	630	\$ 80,243	\$ 3,821	\$ 127.37
AVONEX PEN	9	270	\$ 30,395	\$ 3,377	\$ 112.57
GILENYA	31	930	\$ 88,304	\$ 2,849	\$ 94.95
NEUPOGEN	6	156	\$ 14,021	\$ 2,337	\$ 89.88
ORENCIA	10	292	\$ 21,356	\$ 2,136	\$ 73.14
REBIF	14	392	\$ 28,242	\$ 2,017	\$ 72.05
IMATINIB MESYLATE	10	300	\$ 18,624	\$ 1,862	\$ 62.08
HUMIRA PEN CROHN-UC-HS STAR	1	30	\$ 1,768	\$ 1,768	\$ 58.92
VANCOMYCIN HCL	13	157	\$ 8,134	\$ 626	\$ 51.81
TRIUMEQ	25	750	\$ 35,153	\$ 1,406	\$ 46.87
GENVOYA	12	420	\$ 19,244	\$ 1,604	\$ 45.82
AUBAGIO	8	392	\$ 17,926	\$ 2,241	\$ 45.73
XELJANZ	2	60	\$ 2,625	\$ 1,312	\$ 43.74
OTEZLA	32	1,170	\$ 49,204	\$ 1,538	\$ 42.06
XGEVA	11	330	\$ 13,439	\$ 1,222	\$ 40.72
ENBREL	24	698	\$ 27,978	\$ 1,166	\$ 40.08
DIASTAT ACUDIAL	1	5	\$ 195	\$ 195	\$ 38.93
UCERIS	2	180	\$ 6,605	\$ 3,302	\$ 36.69

¹ Source: M2 PDTS, Source System D (Direct Care) and C (Clinician Administered Drug).

Patrick – Purchased Care Pharmacy¹ based on “Parent” PRISM Area ID by Enrollment Group

PARENT PRISM 0046 AF-C-45th MEDGRP-PATRICK											
Source System	Enrollment Group	2017					2018				
		# Scripts	Days Supply	Paid by TRICARE	Paid / Script	Paid / Day	# Scripts	Days Supply	Paid by TRICARE	Paid / Script	Paid / Day
MCSC (Retail)	Prime-MTF	30,894	718,960	\$ 3,343,206	\$ 108	\$ 4.65	30,804	718,175	\$ 3,046,207	\$ 99	\$ 4.24
	Prime-MCSC	23,725	677,943	\$ 1,946,223	\$ 82	\$ 2.87	24,241	725,852	\$ 1,737,032	\$ 72	\$ 2.39
	Reliant	184	4,005	\$ 7,741	\$ 42	\$ 1.93	133	2,555	\$ 3,454	\$ 26	\$ 1.35
	Plus	2,375	61,595	\$ 98,194	\$ 41	\$ 1.59	2,208	56,629	\$ 68,106	\$ 31	\$ 1.20
	Overseas Prime	1	16	\$ 6	\$ 6	\$ 0.37	0	0	\$ 0	\$ 0	\$ 0.00
	Desig Prov	0	0	\$ 0	\$ 0	\$ 0.00	1	10	\$ 59	\$ 59	\$ 5.86
	Other	153,895	4,624,618	\$ 10,900,069	\$ 71	\$ 2.36	154,997	4,747,250	\$ 12,228,215	\$ 79	\$ 2.58
MCSC Total		211,074	6,087,137	\$ 16,295,439	\$ 77	\$ 2.68	212,384	6,250,471	\$ 17,083,072	\$ 80	\$ 2.73
Mail Order	Prime-MTF	6,225	516,348	\$ 2,151,030	\$ 346	\$ 4.17	5,261	430,176	\$ 1,942,207	\$ 369	\$ 4.51
	Prime-MCSC	11,953	1,005,776	\$ 1,922,295	\$ 161	\$ 1.91	11,302	952,352	\$ 2,105,468	\$ 186	\$ 2.21
	Reliant	15	1,350	\$ 1,954	\$ 130	\$ 1.45	23	1,985	\$ 8,907	\$ 387	\$ 4.49
	Plus	1,033	88,883	\$ 162,817	\$ 158	\$ 1.83	963	82,882	\$ 177,464	\$ 184	\$ 2.14
	Overseas Prime	1	84	\$ 7	\$ 7	\$ 0.09	2	180	\$ 41	\$ 21	\$ 0.23
	Other	109,912	9,438,713	\$ 13,953,734	\$ 127	\$ 1.48	102,426	8,746,921	\$ 13,870,189	\$ 135	\$ 1.59
Mail Order Total		129,139	11,051,154	\$ 18,191,837	\$ 141	\$ 1.65	119,977	10,214,496	\$ 18,104,277	\$ 151	\$ 1.77
Grand Total		340,213	17,138,291	\$ 34,487,276	\$ 101	\$ 2.01	332,361	16,464,967	\$ 35,187,349	\$ 106	\$ 2.14

¹ Source: M2 PDTS, Source System M (MCSC) and T (Mail Order). Parent PRISM is a derived field and includes all children of the Parent DMIS ID.

Patrick – Purchased Care Pharmacy¹ based on PRISM Area ID by Enrollment Group

0046 AF-C-45th MEDGRP-PATRICK											
Source System	Enrollment Group	2017					2018				
		# Scripts	Days Supply	Paid by TRICARE	Paid / Script	Paid / Day	# Scripts	Days Supply	Paid by TRICARE	Paid / Script	Paid / Day
MCSC (Retail)	Prime-MTF	30,894	718,960	\$ 3,343,206	\$ 108	\$ 4.65	30,804	718,175	\$ 3,046,207	\$ 99	\$ 4.24
	Prime-MCSC	23,725	677,943	\$ 1,946,223	\$ 82	\$ 2.87	24,241	725,852	\$ 1,737,032	\$ 72	\$ 2.39
	Reliant	184	4,005	\$ 7,741	\$ 42	\$ 1.93	133	2,555	\$ 3,454	\$ 26	\$ 1.35
	Plus	2,375	61,595	\$ 98,194	\$ 41	\$ 1.59	2,208	56,629	\$ 68,106	\$ 31	\$ 1.20
	Overseas Prime	1	16	\$ 6	\$ 6	\$ 0.37	0	0	\$ 0	\$ 0	\$ 0.00
	Desig Prov	0	0	\$ 0	\$ 0	\$ 0.00	1	10	\$ 59	\$ 59	\$ 5.86
	Other	153,895	4,624,618	\$ 10,900,069	\$ 71	\$ 2.36	154,997	4,747,250	\$ 12,228,215	\$ 79	\$ 2.58
MCSC Total		211,074	6,087,137	\$ 16,295,439	\$ 77	\$ 2.68	212,384	6,250,471	\$ 17,083,072	\$ 80	\$ 2.73
Mail Order	Prime-MTF	6,225	516,348	\$ 2,151,030	\$ 346	\$ 4.17	5,261	430,176	\$ 1,942,207	\$ 369	\$ 4.51
	Prime-MCSC	11,953	1,005,776	\$ 1,922,295	\$ 161	\$ 1.91	11,302	952,352	\$ 2,105,468	\$ 186	\$ 2.21
	Reliant	15	1,350	\$ 1,954	\$ 130	\$ 1.45	23	1,985	\$ 8,907	\$ 387	\$ 4.49
	Plus	1,033	88,883	\$ 162,817	\$ 158	\$ 1.83	963	82,882	\$ 177,464	\$ 184	\$ 2.14
	Overseas Prime	1	84	\$ 7	\$ 7	\$ 0.09	2	180	\$ 41	\$ 21	\$ 0.23
	Other	109,912	9,438,713	\$ 13,953,734	\$ 127	\$ 1.48	102,426	8,746,921	\$ 13,870,189	\$ 135	\$ 1.59
Mail Order Total		129,139	11,051,154	\$ 18,191,837	\$ 141	\$ 1.65	119,977	10,214,496	\$ 18,104,277	\$ 151	\$ 1.77
Grand Total		340,213	17,138,291	\$ 34,487,276	\$ 101	\$ 2.01	332,361	16,464,967	\$ 35,187,349	\$ 106	\$ 2.14

¹ Source: M2 PDTS, Source System M (MCSC) and T (Mail Order). Based on PRISM Area ID.

Patrick – FY18 Purchased Care Pharmacy¹

Top 20 Products Dispensed by # of Scripts and Cost/Day

0046 AF-C-45th MEDGRP-PATRICK					
TOP 20 BASED ON VOLUME					
Product Name	Number of Scripts	Days Supply	Paid by TRICARE	Paid / Script	Paid / Day
LEVOTHYROXINE SODIUM	7,133	529,648	\$ 27,687	\$ 4	\$ 0.05
HYDROCODONE-ACETAMINOPHEN	6,912	115,812	\$ 50,115	\$ 7	\$ 0.43
ATORVASTATIN CALCIUM	5,885	468,630	\$ 341,494	\$ 58	\$ 0.73
AMLODIPINE BESYLATE	5,021	374,913	\$ 105,924	\$ 21	\$ 0.28
LISINAPRIL	5,009	381,625	- \$ 28	\$ 0	\$ 0.00
PREDNISONE	4,814	85,496	\$ 6,745	\$ 1	\$ 0.08
OMEPRAZOLE	4,735	350,485	\$ 94,323	\$ 20	\$ 0.27
OXYCODONE-ACETAMINOPHEN	4,574	83,535	\$ 48,682	\$ 11	\$ 0.58
AMOXICILLIN	4,205	34,272	\$ 604	\$ 0	\$ 0.02
AZITHROMYCIN	4,063	22,719	\$ 9,562	\$ 2	\$ 0.42
GABAPENTIN	3,707	203,291	\$ 141,126	\$ 38	\$ 0.69
LOSARTAN POTASSIUM	3,549	264,358	\$ 188,747	\$ 53	\$ 0.71
ALPRAZOLAM	3,478	120,317	\$ 7,307	\$ 2	\$ 0.06
PANTOPRAZOLE SODIUM	3,410	241,973	\$ 413,993	\$ 121	\$ 1.71
TRAMADOL HCL	3,328	86,740	\$ 68,199	\$ 20	\$ 0.79
SIMVASTATIN	3,271	269,669	\$ 231,521	\$ 71	\$ 0.86
FUROSEMIDE	3,094	193,454	\$ 24,431	\$ 8	\$ 0.13
CIPROFLOXACIN HCL	2,927	23,932	\$ 6,701	\$ 2	\$ 0.28
AMOXICILLIN-CLAVULANATE POT	2,755	26,721	\$ 11,062	\$ 4	\$ 0.41
FLUTICASONE PROPIONATE	2,743	159,436	\$ 8,302	\$ 3	\$ 0.05

0046 AF-C-45th MEDGRP-PATRICK					
TOP 20 BASED ON COST PER DAY					
Product Name	Number of Scripts	Days Supply	Paid by TRICARE	Paid / Script	Paid / Day
H.P. ACTHAR	4	91	\$ 151,883	\$ 37,971	\$ 1,669.04
CERDELGA	2	56	\$ 47,862	\$ 23,931	\$ 854.68
KORLYM	11	330	\$ 260,604	\$ 23,691	\$ 789.71
ADVATE	1	2	\$ 1,569	\$ 1,569	\$ 784.71
ORKAMBI	13	364	\$ 269,824	\$ 20,756	\$ 741.27
UPTRAVI	28	820	\$ 532,314	\$ 19,011	\$ 649.16
VOSEVI	3	84	\$ 50,067	\$ 16,689	\$ 596.04
COMETRIQ	1	28	\$ 16,027	\$ 16,027	\$ 572.38
POMALYST	14	385	\$ 214,431	\$ 15,317	\$ 556.96
CABOMETYX	1	30	\$ 16,612	\$ 16,612	\$ 553.72
TALTZ AUTOINJECTOR (3 PACK)	1	28	\$ 15,017	\$ 15,017	\$ 536.32
RYDAPT	2	28	\$ 14,979	\$ 7,489	\$ 534.96
REVLIMID	104	2,877	\$ 1,439,482	\$ 13,841	\$ 500.34
LENVIMA	1	30	\$ 14,399	\$ 14,399	\$ 479.98
ALECENSA	7	210	\$ 100,732	\$ 14,390	\$ 479.68
TAGRISSO	7	210	\$ 97,632	\$ 13,947	\$ 464.92
LYNPARZA	1	28	\$ 12,471	\$ 12,471	\$ 445.40
AMICAR	2	5	\$ 2,113	\$ 1,057	\$ 422.68
JAKAFI	27	810	\$ 321,235	\$ 11,898	\$ 396.59
VERZENIO	1	28	\$ 10,951	\$ 10,951	\$ 391.11

¹ Source: M2 PDTS, Source System M (MCSC) and T (Mail Order). Based on PRISM Area ID.

Radiology

Patrick – Direct Care Radiology¹ Services by Ordering Product Line and Enrollment Category

0046 AF-C-45th MEDGRP-PATRICK							
FY 2017 RADIOLOGY SERVICES							
Ordering Product Line	Prime - Site	Reliant	Prime - Other	Plus	TFL	Not Enrolled	Total
Special Programs	664	12	110		224	60	1,070
Mental Health	2					2	4
OB/GYN	448		10		4	20	482
Optometry	2						2
Orthopedics	80	2				4	86
Primary Care	10,490	100	108	2	300	216	11,216
Total	11,686	114	228	2	528	302	12,860

0046 AF-C-45th MEDGRP-PATRICK							
FY 2018 RADIOLOGY SERVICES							
Ordering Product Line	Prime - Site	Reliant	Prime - Other	Plus	TFL	Not Enrolled	Total
Ancillary	4		2		4		10
Special Programs	704	6	132		176	34	1,052
OB/GYN	648	12				14	674
Orthopedics	52						52
Primary Care	8,912	80	144	2	162	202	9,502
Total	10,320	98	278	2	342	250	11,290

¹ Source: M2 Radiology Detail, includes both Technical and Professional services. Prime-Site defined as Enrollment Site Parent equal to Tmt Parent. Ordering Product Line based on Ordering MEPRS Code.

Patrick – FY18 Direct Care Top 20 Radiology Procedures¹ by Number of Services and Cost/Svc

0046 AF-C-45th MEDGRP-PATRICK						
TOP 20 RADIOLOGY PROCEDURES BY VOLUME						
Procedure Code	Description	FY 2018				
		# of Svcs	Total RVU	Full Cost	Avg RVU	Cost / Svc
71020	RAD EXM,CHEST,2,FRONTAL & LAT;	1,384	532.84	\$ 31,991	0.39	\$ 23.12
76856	US,PELV,REAL TME W IMG DOC;CMP	738	1,140.21	\$ 68,461	1.55	\$ 92.77
73620	RADIOLOGIC EXAM,FOOT; 2 VIEWS	726	260.37	\$ 15,633	0.36	\$ 21.53
76830	US EXAM, TRANSVAGINAL	698	1,197.07	\$ 71,873	1.72	\$ 102.97
73030	RAD EXM,SHLDR;COMP,MIN 2 VIEW	648	261.56	\$ 15,703	0.40	\$ 24.23
76536	US,SOFT TISS HEAD/NCK	564	924.14	\$ 55,485	1.64	\$ 98.38
73564	RAD EXAM, KNEE; COMP, 4+ VIEWS	528	290.40	\$ 17,435	0.55	\$ 33.02
72100	RAD EXM,SPINE,LUMBO; 2/3 VIEWS	450	218.25	\$ 13,104	0.49	\$ 29.12
73130	RAD EXAM, HAND; MIN OF 3 VIEWS	450	196.26	\$ 11,784	0.44	\$ 26.19
76770	US,RETROPRT,R TME W IMG DC;CMP	342	543.17	\$ 32,612	1.59	\$ 95.36
73100	RADIOLOGIC EXAM,WRIST; 2 VIEWS	326	139.08	\$ 8,351	0.43	\$ 25.62
72040	RADLOG EXM,SPIN,CERV;2/3 VIEWS	314	144.06	\$ 8,648	0.46	\$ 27.54
73562	RADIOLOGIC EXAM, KNEE; 3 VIEWS	276	136.62	\$ 8,203	0.50	\$ 29.72
76700	US,ABDM,REAL TME W IMG DOC;CMP	262	450.27	\$ 27,033	1.72	\$ 103.18
73502	RAD EXAM,HIP,UNILAT;2-3 VIEWS	256	147.20	\$ 8,837	0.58	\$ 34.52
76999	UNLISTED ULTRASOUND PROC	226	0.00	\$ 0	0.00	\$ 0.00
73600	RADIOLOGIC EXAM,ANKLE;2 VIEWS	222	91.02	\$ 5,465	0.41	\$ 24.62
73610	RAD EXAM,ANK;COMP,MIN 3 VIEWS	220	95.70	\$ 5,746	0.44	\$ 26.12
74000	X-RAY EXAM OF ABDOMEN	218	70.85	\$ 4,254	0.33	\$ 19.52
71046	RADIOLOGIC EXAM,CHEST;2 VIEWS	198	83.16	\$ 4,993	0.42	\$ 25.22

0046 AF-C-45th MEDGRP-PATRICK						
TOP 20 RADIOLOGY PROCEDURES BY COST/SVC						
Procedure Code	Description	FY 2018				
		# of Svcs	Total RVU	Full Cost	Avg RVU	Cost / Svc
76700	US,ABDM,REAL TME W IMG DOC;CMP	262	450.27	\$ 27,033	1.72	\$ 103.18
76830	US EXAM, TRANSVAGINAL	698	1,197.07	\$ 71,873	1.72	\$ 102.97
76536	US,SOFT TISS HEAD/NCK	564	924.14	\$ 55,485	1.64	\$ 98.38
76770	US,RETROPRT,R TME W IMG DC;CMP	342	543.17	\$ 32,612	1.59	\$ 95.36
76856	US,PELV,REAL TME W IMG DOC;CMP	738	1,140.21	\$ 68,461	1.55	\$ 92.77
76705	US,ABDM,REAL TME W IMG DOC;LTD	196	251.56	\$ 15,103	1.28	\$ 77.06
76870	US EXAM, SCROTUM	102	96.04	\$ 5,766	0.94	\$ 56.53
76775	US,RETROPRT,R TME W IMG DC;LTD	4	3.22	\$ 193	0.81	\$ 48.33
73523	RAD EXM,HIPS,BILAT;MIN,5 VIEWS	68	53.38	\$ 3,205	0.79	\$ 47.14
70330	X-RAY EXAM OF JAW JOINTS	8	5.24	\$ 315	0.66	\$ 39.33
71111	RAD EXM,RIB,BILAT;POSTER,MIN 4	66	43.14	\$ 2,590	0.65	\$ 39.24
70260	RAD EXM,SKULL;COMP,MIN 4 VIEWS	20	12.60	\$ 757	0.63	\$ 37.83
74022	RADIO EXAM ABDM,SNGL VIEW CHST	92	56.58	\$ 3,397	0.62	\$ 36.93
70200	RAD EXM;ORBITS,COMP,MIN 4 VIEW	8	4.71	\$ 283	0.59	\$ 35.35
71022	RAD EXM,CHEST,FRON&LAT;OBLIQUE	4	2.30	\$ 138	0.58	\$ 34.53
70150	RAD EXM,FACE BONES;COMP, MIN 3	12	6.90	\$ 414	0.58	\$ 34.52
73502	RAD EXAM,HIP,UNILAT;2-3 VIEWS	256	147.20	\$ 8,837	0.58	\$ 34.52
73564	RAD EXAM, KNEE; COMP, 4+ VIEWS	528	290.40	\$ 17,435	0.55	\$ 33.02
72081	RAD EXM,SP,THOR&LUMB;ONE VIEW	16	8.48	\$ 509	0.53	\$ 31.82
70110	RAD EXM,MANDIB;COMP,MIN 4 VIEW	2	1.05	\$ 63	0.53	\$ 31.52

¹ Source: M2 Radiology Detail, includes both Technical and Professional services.

Patrick – Purchased Care Radiology¹ Services by Product Line² and Enrollment Category

0046 AF-C-45th MEDGRP-PATRICK PARENT PRISM AREA							
FY 2017 RADIOLOGY SERVICES							
Product Line	Prime - Site	Reliant	Prime - Other	Plus	TFL	Not Enrolled	Total
Inpatient	1,074	12	763		10,987	753	13,589
Anesth	105	1	27		83	25	241
Derm	21				262	21	304
ENT	14		3		36	5	58
ER	4,188	39	1,573		8,672	1,541	16,013
Facility	1,217	1	706		5,632	886	8,442
IMSub	353		274		1,773	224	2,624
MH					1	4	5
OBGYN	767	2	171		167	477	1,584
Optom	45		27		284	32	388
Ortho	2,026	9	643	1	3,589	717	6,985
PC	4,206	19	1,390	4	12,055	1,103	18,777
Path					2		2
Rad	4,427	17	2,978		16,078	2,776	26,276
Surg	141		30		221	25	417
SurgSub	272		72		900	77	1,321
Other	70	1	43		33	38	185
None	11		65		690	29	795
Total	18,937	101	8,765	5	61,465	8,733	98,006

0046 AF-C-45th MEDGRP-PATRICK PARENT PRISM AREA							
FY 2018 RADIOLOGY SERVICES							
Product Line	Prime - Site	Reliant	Prime - Other	Plus	TFL	Not Enrolled	Total
Inpatient	976	3	612		11,735	531	13,857
Anesth	95		52		128	31	306
Derm			51		404	153	608
ENT	1		1		33	4	39
ER	4,034	28	1,602		8,405	1,446	15,515
Facility	1,218	7	931		6,648	922	9,726
Home	1						1
IMSub	301	1	235		1,894	207	2,638
MH			1		2		3
OBGYN	411	3	161		138	293	1,006
Optom	45		22		330	31	428
Ortho	2,189	5	777	3	4,512	747	8,233
PC	1,845	19	737		9,208	639	12,448
Path	10		14		1,236	2	1,262
Rad	6,983	19	3,892		18,494	3,487	32,875
Surg	99		31		144	20	294
SurgSub	214		92		386	72	764
Other	60		38		92	30	220
None	10		95		816	23	944
Total	18,492	85	9,344	3	64,605	8,638	101,167

¹ Source: M2 TED Non-Institutional Detail (Procedure Code = 7****), includes both Technical and Professional services. Based on "Parent" PRISM.

Prime-Site defined based on Enrollment Site Parent.

² Inpatient defined as Service Type = I, otherwise based on standard Product Line (derived from Provider Specialty).

Patrick – FY18 Purchased Care Top 20 Radiology Procedures¹ by Number of Services and Paid/Svc

0046 AF-C-45th MEDGRP-PATRICK PARENT PRISM AREA						
TOP 20 RADIOLOGY PROCEDURES BY VOLUME						
Procedure Code	Description	FY 2018				
		Number of Services	Enhanced Total RVU	Amount Paid ²	Avg RVU	Paid ² / Svc
71045	RADIOLOG EXM,CHEST;SINGLE VIEW	8,361	1,916.89	\$ 88,635	0.23	\$ 10.60
70450	CT HEAD/BRAIN W/O CONTST MATRL	5,085	7,079.74	\$ 196,845	1.39	\$ 38.71
71046	RADIOLOGIC EXAM,CHEST;2 VIEWS	4,688	2,300.82	\$ 67,713	0.49	\$ 14.44
71010	CHEST X-RAY	2,528	601.12	\$ 24,335	0.24	\$ 9.63
74177	CT,ABDOM & PELV;W CONTRAST MAT	2,497	8,576.95	\$ 256,781	3.43	\$ 102.84
71250	CT THORAX WO CONTRAST MATERIAL	2,468	7,263.74	\$ 109,595	2.94	\$ 44.41
77067	SCRN MAMMOG,BILAT,CAD WHN PERF	2,410	7,816.96	\$ 255,330	3.24	\$ 105.95
74176	CT,ABDOM & PELV;WO CONTRAS MAT	2,407	6,754.88	\$ 186,816	2.81	\$ 77.61
73630	RAD EXM,FOOT;COMP, MIN 3 VIEWS	2,180	1,511.76	\$ 32,542	0.69	\$ 14.93
73030	RAD EXM,SHLDR;COMP,MIN 2 VIEW	2,003	1,250.60	\$ 23,606	0.62	\$ 11.79
72100	RAD EXM,SPINE,LUMBO; 2/3 VIEWS	1,986	1,552.15	\$ 30,350	0.78	\$ 15.28
78452	MYOCARD PERF IMAG,SPECT;MULTI	1,853	16,158.62	\$ 385,608	8.72	\$ 208.10
73502	RAD EXAM,HIP,UNILAT;2-3 VIEWS	1,837	1,430.32	\$ 22,078	0.78	\$ 12.02
73560	RADIOLOGIC EXAM,KNEE;1/2 VIEWS	1,735	1,194.58	\$ 21,308	0.69	\$ 12.28
71020	RAD EXM,CHEST,2,FRONTAL & LAT;	1,555	705.05	\$ 19,895	0.45	\$ 12.79
72148	MAGNETIC IMAGE, LUMBAR SPINE	1,532	8,141.04	\$ 159,758	5.31	\$ 104.28
73721	MRI,JNT,LOW EXT;WO CNTRST MAT	1,434	8,458.28	\$ 192,825	5.90	\$ 134.47
73562	RADIOLOGIC EXAM, KNEE; 3 VIEWS	1,420	1,063.58	\$ 19,934	0.75	\$ 14.04
76700	US,ABDM,REAL TME W IMG DOC;CMP	1,354	3,331.85	\$ 65,125	2.46	\$ 48.10
76641	ULTRASD,BREAST,UNILAT,IMG;COMP	1,322	2,802.26	\$ 81,535	2.12	\$ 61.68

0046 AF-C-45th MEDGRP-PATRICK PARENT PRISM AREA						
TOP 20 RADIOLOGY PROCEDURES BY PAID/SVC						
Procedure Code	Description	FY 2018				
		Number of Services	Enhanced Total RVU	Amount Paid ²	Avg RVU	Paid ² / Svc
77522	PROTON TREAT DEL;SIMPLE,COMPEN	14	0.00	\$ 66,280	0.00	\$ 4,734.26
77371	SRS,CRN LS,1SESS;MLT CBLT 60BS	2	68.78	\$ 3,001	34.39	\$ 1,500.64
78814	PET W CONCUR ACQ CT;LIM AREA	1	24.19	\$ 1,204	24.19	\$ 1,204.27
75842	VEIN X-RAY, ADRENAL GLANDS	1	2.88	\$ 906	2.88	\$ 905.83
77386	IMRT DELIVER,GUID&TRAC;COMPLEX	70	305.42	\$ 56,678	4.36	\$ 809.69
78804	TUMOR IMAGING, WHOLE BODY	2	15.10	\$ 1,520	7.55	\$ 759.91
77301	RADIOTHERAPY DOS PLAN, IMRT	87	4,320.02	\$ 56,125	49.66	\$ 645.11
74182	MAG RES IMG,ABDOMEN;W CONT MAT	1	0.00	\$ 470	0.00	\$ 470.09
70015	CONTRAST X-RAY OF BRAIN	2	4.25	\$ 837	2.13	\$ 418.61
78815	PET W CON CT;SKL BASE- MID-THI	509	9,217.74	\$ 193,172	18.11	\$ 379.51
78816	PET W CONCUR ACQ CT;WHOLE BODY	90	1,466.78	\$ 32,436	16.30	\$ 360.39
73722	MAG RES IMG,ANY JT,LW EXT;W CM	20	190.55	\$ 7,037	9.53	\$ 351.85
77605	HYPERThERThIA TREATMENT	3	46.04	\$ 1,044	15.35	\$ 348.15
77373	STEREOTACTIC RAD TRMT DELIVERY	34	1,332.53	\$ 11,442	39.19	\$ 336.53
75557	CARD MRI,MORPH & FUNC WO CONTR	4	12.40	\$ 1,293	3.10	\$ 323.23
76825	ECHO EXAM OF FETAL HEART	1	7.81	\$ 312	7.81	\$ 312.35
78608	BRAIN IMAGING (PET)	2	32.36	\$ 604	16.18	\$ 302.11
78492	HEART IMAGE (PET), MULTIPLE	17	187.36	\$ 5,006	11.02	\$ 294.44
71555	MAGNETIC IMAGE, CHEST (MRA)	3	13.67	\$ 818	4.56	\$ 272.77
77059	MRI,BREAST,WWO CONTRST; BILAT	108	1,330.69	\$ 27,984	12.32	\$ 259.11

¹ Source: M2 TED Non-Institutional Detail (Procedure Code = 7****), includes both Technical and Professional services. Based on "Parent" PRISM.

² Purchased Care includes 13% increase for overhead burdening.

Laboratory

Patrick – Direct Care Laboratory¹ Services by Ordering Product Line and Enrollment Category

0046 AF-C-45th MEDGRP-PATRICK							
FY 2017 LABORATORY SERVICES							
Ordering Product Line	Prime - Site	Reliant	Prime - Other	Plus	TFL	Not Enrolled	Total
Dental	1	1					2
Ancillary	22	1	1		2	398	424
Special Programs	14,413	113	3,462		12,380	2,810	33,178
IM Subspecialty	1						1
Mental Health	238	13	20			19	290
OB/GYN	2,023	23	85		6	67	2,204
Optometry	2		5				7
Orthopedics	16						16
Primary Care	56,231	634	812	22	3,471	2,236	63,406
Other	10				9	40	59
TOTAL	72,957	785	4,385	22	15,868	5,570	99,587

0046 AF-C-45th MEDGRP-PATRICK							
FY 2018 LABORATORY SERVICES							
Ordering Product Line	Prime - Site	Reliant	Prime - Other	Plus	TFL	Not Enrolled	Total
Dental	9		1			1	11
Ancillary	20	15	2		1	588	626
Special Programs	14,962	191	3,802		14,008	2,205	35,168
IM Subspecialty	1						1
Mental Health	154	16	3			25	198
OB/GYN	3,010	45	25	2	13	68	3,163
Orthopedics	64	2					66
Primary Care	55,812	465	988	26	3,239	2,671	63,201
Other	3				2	12	17
TOTAL	74,035	734	4,821	28	17,263	5,570	102,451

¹ Source: M2 Laboratory Detail, includes both Technical and Professional services. Prime-Site defined as Enrollment Site Parent equal to Tmt Parent. Ordering Product Line based on Ordering MEPRS Code.

Patrick – FY18 Direct Care Top 20 Laboratory Procedures¹ by Number of Services and Cost/Svc

0046 AF-C-45th MEDGRP-PATRICK						
TOP 20 LABORATORY PROCEDURES BY VOLUME						
Procedure Code	Description	FY 2018				
		# of Svcs	Total RVU	Full Cost	Avg RVU	Cost / Svc
80053	COMPREHENSIVE METABOLIC PANEL	11,337	19,811.56	\$ 939,646	1.75	\$ 82.88
80061	LIPID PANEL	9,116	9,250.70	\$ 438,725	1.01	\$ 48.13
85025	COMPLETE CBC W/AUTO DIFF WBC	7,770	2,486.40	\$ 117,949	0.32	\$ 15.18
84443	ASSAY THYROID STIM HORMONE	6,535	4,639.85	\$ 220,099	0.71	\$ 33.68
81003	URINALYSIS, AUTO, W/O SCOPE	5,615	462.90	\$ 21,939	0.08	\$ 3.91
82306	VITAMIN D, 25 HYDROXY	4,140	207.00	\$ 9,812	0.05	\$ 2.37
83036	HEMOGLOBIN; GLYCOSYLATED (A1C)	3,810	1,296.82	\$ 61,504	0.34	\$ 16.14
84439	ASSAY OF FREE THYROXINE	3,624	1,151.64	\$ 54,617	0.32	\$ 15.07
84153	ASSAY OF PSA, TOTAL	2,715	1,693.53	\$ 80,322	0.62	\$ 29.58
86701	HIV-1	2,264	118.19	\$ 5,602	0.05	\$ 2.47
82043	ALBUMIN;URINE(MICROALB),QUANT	2,111	430.81	\$ 20,438	0.20	\$ 9.68
81015	MICROSCOPIC EXAM OF URINE	1,862	195.58	\$ 9,271	0.11	\$ 4.98
86703	ANTIBDY;HIV-1 & HIV-2,SING RES	1,834	91.70	\$ 4,347	0.05	\$ 2.37
82608	B-12 BINDING CAPACITY	1,629	81.45	\$ 3,861	0.05	\$ 2.37
82746	BLOOD FOLIC ACID SERUM	1,629	81.45	\$ 3,861	0.05	\$ 2.37
84703	CHORIONIC GONADOTROPIN ASSAY	1,210	324.77	\$ 15,401	0.27	\$ 12.73
84403	ASSAY OF TOTAL TESTOSTERONE	981	49.05	\$ 2,325	0.05	\$ 2.37
83550	IRON BINDING TEST	909	45.45	\$ 2,154	0.05	\$ 2.37
87086	CULT,BACT;QUANTIT COLONY COUNT	880	253.06	\$ 12,002	0.29	\$ 13.64
84481	FREE ASSAY (FT-3)	856	42.80	\$ 2,029	0.05	\$ 2.37

0046 AF-C-45th MEDGRP-PATRICK						
TOP 20 LABORATORY PROCEDURES BY COST/SVC						
Procedure Code	Description	FY 2018				
		# of Svcs	Total RVU	Full Cost	Avg RVU	Cost / Svc
80053	COMPREHENSIVE METABOLIC PANEL	11,337	19,811.56	\$ 939,646	1.75	\$ 82.88
84588	ASSAY OF VASOPRESSIN	5	6.22	\$ 295	1.24	\$ 59.00
80069	RENAL FUNCTION PANEL	382	473.68	\$ 22,465	1.24	\$ 58.81
80061	LIPID PANEL	9,116	9,250.70	\$ 438,725	1.01	\$ 48.13
80048	BASIC METABOL PANEL (CA,TOTAL)	705	697.95	\$ 33,107	0.99	\$ 46.96
80076	HEPATIC FUNCTION PANEL	742	715.12	\$ 33,920	0.96	\$ 45.71
83018	HVY METAL;QUANTITATIVE,EA,NES	1	0.84	\$ 40	0.84	\$ 39.84
84443	ASSAY THYROID STIM HORMONE	6,535	4,639.85	\$ 220,099	0.71	\$ 33.68
80320	ALCOHOLS	89	60.09	\$ 2,850	0.68	\$ 32.03
80335	ANTIDEP,TRICYCL & OTH CYC; 1/2	1	0.67	\$ 32	0.67	\$ 31.78
82261	ASSAY OF BIOTINIDASE	1	0.64	\$ 30	0.64	\$ 30.36
84153	ASSAY OF PSA, TOTAL	2,715	1,693.53	\$ 80,322	0.62	\$ 29.58
85260	BLOOD CLOT FACTOR X TEST	2	1.22	\$ 58	0.61	\$ 28.93
86606	ASPERGILLUS ANTIBODY	3	1.74	\$ 83	0.58	\$ 27.51
82274	ASSAY TEST FOR BLOOD, FECAL	317	179.57	\$ 8,518	0.57	\$ 26.87
80051	ELECTROLYTE PANEL	2	1.10	\$ 52	0.55	\$ 26.09
86612	BLASTOMYCES ANTIBODY	1	0.49	\$ 23	0.49	\$ 23.24
86698	HISTOPLASMA	1	0.48	\$ 23	0.48	\$ 22.77
87880	STREP A ASSAY W/OPTIC	18	8.28	\$ 393	0.46	\$ 21.82
83718	ASSAY OF LIPOPROTEIN	4	1.82	\$ 86	0.46	\$ 21.58

¹Source: M2 Laboratory Detail, includes both Technical and Professional services.

Patrick – Purchased Care Laboratory¹ Services by Product Line² and Enrollment Category

0046 AF-C-45th MEDGRP-PATRICK PARENT PRISM AREA							
FY 2017 LABORATORY SERVICES							
Product Line	Prime - Site	Reliant	Prime - Other	Plus	TFL	Not Enrolled	Total
Inpatient	609	21	288		2,142	172	3,232
Anesth	57	1	12		14	20	104
Derm	278		56		1,499	126	1,959
ENT			2		14	5	21
ER	484	2	213		757	172	1,628
Facility	4,899	15	5,305		5,585	4,246	20,050
IMSub	2,835	4	2,047		2,081	1,792	8,759
MH	20		2		3	18	43
OBGYN	544		187		71	319	1,121
Optom	64		40		793	29	926
Ortho	74		57		215	30	376
PC	2,044	17	2,634	6	19,061	2,945	26,707
Path	2,719	18	1,075		4,251	1,075	9,138
Rad	37		27		138	12	214
Surg	11		5		103	8	127
SurgSub	680	1	181		1,573	141	2,576
Other	19		5		12	1	37
None	17,616	52	18,730	17	9,984	21,149	67,548
Total	32,990	131	30,866	23	48,296	32,260	144,566

0046 AF-C-45th MEDGRP-PATRICK PARENT PRISM AREA							
FY 2018 LABORATORY SERVICES							
Product Line	Prime - Site	Reliant	Prime - Other	Plus	TFL	Not Enrolled	Total
Inpatient	1,265		786		2,666	443	5,160
Anesth	74		27		72	20	193
Derm	368		174		1,608	143	2,293
ENT	26		14		15	27	82
ER	898	15	322		584	276	2,095
Facility	3,737	5	5,462		5,093	4,873	19,170
IMSub	2,643		1,813		2,509	1,955	8,920
MH	41		28		1	26	96
OBGYN	374	3	208		47	310	942
Optom	56		33		676	24	789
Ortho	211		149		387	90	837
PC	2,515	14	4,129	2	15,030	4,439	26,129
Path	3,591	14	2,464		6,283	2,383	14,735
Rad	49		22		238	18	327
Surg	8		21		96	46	171
SurgSub	527		163		711	161	1,562
Other	8		2		22	8	40
None	14,222	67	16,310	7	12,452	17,557	60,615
Total	30,613	118	32,127	9	48,490	32,799	144,156

¹ Source: M2 TED Non-Institutional Detail (Procedure Code = 8****), includes both Technical and Professional services. Based on "Parent" PRISM.

Prime-Site defined based on Enrollment Site Parent.

² Inpatient defined as Service Type = I, otherwise based on standard Product Line (derived from Provider Specialty).

Patrick – FY18 Purchased Care Top 20 Laboratory Procedures¹ by Number of Services and Paid/Svc

0046 AF-C-45th MEDGRP-PATRICK PARENT PRISM AREA						
TOP 20 LABORATORY PROCEDURES BY VOLUME						
Procedure Code	Description	FY 2018				
		Number of Services	Enhanced Total RVU	Amount Paid ²	Avg RVU	Paid ² / Svc
88305	LEV IV-SRG PATH,GROS&MICRO EXM	19,402	28,834.15	\$ 492,207	1.49	\$ 25.37
85025	COMPLETE CBC W/AUTO DIFF WBC	6,835	1,887.75	\$ 41,873	0.28	\$ 6.13
80053	COMPREHENSIVE METABOLIC PANEL	5,876	2,160.32	\$ 59,954	0.37	\$ 10.20
80061	LIPID PANEL	5,723	3,020.20	\$ 67,720	0.53	\$ 11.83
86003	ALLERG SPEC IGE;QUANT/SEMI,EA	4,905	904.78	\$ 28,163	0.18	\$ 5.74
83036	HEMOGLOBIN; GLYCOSYLATED (A1C)	3,750	1,270.05	\$ 27,137	0.34	\$ 7.24
81003	URINALYSIS, AUTO, W/O SCOPE	3,627	298.81	\$ 5,025	0.08	\$ 1.39
87804	INFLUENZA ASSAY W/OPTIC	2,729	1,255.34	\$ 31,169	0.46	\$ 11.42
84443	ASSAY THYROID STIM HORMONE	2,638	1,568.74	\$ 40,803	0.59	\$ 15.47
82947	GLUCOSE; QUANTITATIVE, BLOOD	2,494	335.60	\$ 3,632	0.13	\$ 1.46
85610	PROTHROMBIN TIME	2,331	313.42	\$ 3,451	0.13	\$ 1.48
88341	IMMUNOHIS/CYTOCH;EA ADD AB STN	2,224	3,304.90	\$ 47,961	1.49	\$ 21.57
81001	URINALYSIS, AUTO W/SCOPE	2,218	249.66	\$ 5,809	0.11	\$ 2.62
88342	IMMUNOHIST/CYT;INIT SNG AB STN	2,174	4,827.83	\$ 97,998	2.22	\$ 45.08
88185	FLOW CYTOMETRY,CELL SURFACE	2,124	1,912.05	\$ 39,370	0.90	\$ 18.54
84439	ASSAY OF FREE THYROXINE	2,085	659.90	\$ 19,206	0.32	\$ 9.21
80050	GENERAL HEALTH PANEL	2,056	2,704.02	\$ 82,866	1.32	\$ 40.30
82306	VITAMIN D, 25 HYDROXY	1,979	2,066.06	\$ 60,340	1.04	\$ 30.49
88313	SPEC STN,INT&RP;GRP II,ALL OTH	1,811	2,644.52	\$ 49,384	1.46	\$ 27.27
81002	URINALYSIS NONAUTO W/O SCOPE	1,648	164.80	\$ 2,145	0.10	\$ 1.30

0046 AF-C-45th MEDGRP-PATRICK PARENT PRISM AREA						
TOP 20 LABORATORY PROCEDURES BY PAID/SVC						
Procedure Code	Description	FY 2018				
		Number of Services	Enhanced Total RVU	Amount Paid ²	Avg RVU	Paid ² / Svc
81545	ONC(THY),GEN EXPR ANAL,142 GEN	1	99.99	\$ 4,757	99.99	\$ 4,756.71
81519	ONC(BRST),MRNA,RT-PCR,21 GENES	6	599.94	\$ 24,104	99.99	\$ 4,017.26
81223	CFTR GENE ANAL; FULL GENE SEQ	1	13.86	\$ 3,790	13.86	\$ 3,790.40
81229	CYTO CON MICROAR ANAL;COPY&SNP	5	96.66	\$ 18,488	19.33	\$ 3,697.63
81211	BRCA1,2 GEN ANAL;FUL,COM,BRCA1	23	1,514.51	\$ 38,902	65.85	\$ 1,691.39
81408	MOLECULAR PATHOLOGY PROC, LV 9	7	333.36	\$ 9,305	47.62	\$ 1,329.29
81220	CFTR GENE ANAL;COMMON VARIANTS	31	170.06	\$ 35,005	5.49	\$ 1,129.19
81490	AUTOIMM,ANAL,12 BIOMARK,IMMUNO	2	46.70	\$ 2,222	23.35	\$ 1,110.76
81406	MOLECULAR PATHOLOGY PROC,LEV 7	24	157.20	\$ 24,488	6.55	\$ 1,020.35
81450	TARG GEN SEQ,HEMATOLY NEO,5-50	1	21.10	\$ 905	21.10	\$ 904.70
81321	PTEN GENE ANAL;FULL SEQ ANAL	1	16.67	\$ 825	16.67	\$ 824.67
81405	MOLECULAR PATHOLOGY PROC,LEV 6	17	92.07	\$ 10,675	5.42	\$ 627.92
81292	MLH1 GENE ANAL; FULL SEQ ANAL	3	55.63	\$ 1,829	18.54	\$ 609.62
81528	ONC(COLOREC),QUANT,10 DNA MARK	30	424.76	\$ 17,834	14.16	\$ 594.47
81317	PMS2 GENE ANAL; FULL SEQ ANAL	4	80.81	\$ 2,112	20.20	\$ 527.96
81420	FET CHR ANEUP GEN SEQ,13,18,21	15	326.44	\$ 7,913	21.76	\$ 527.53
81404	MOLECULAR PATHOLOGY PROC,LEV 5	18	91.56	\$ 8,058	5.09	\$ 447.69
81213	BRCA1,2 GEN ANAL;UNCOM DUP/DEL	17	263.06	\$ 7,465	15.47	\$ 439.12
87507	INF AGNT,DNA/RNA;GI,12-25 TARG	15	220.91	\$ 6,057	14.73	\$ 403.79
87633	INF AGNT DET,NA;RESP,12-25 TAR	21	305.01	\$ 8,163	14.52	\$ 388.73

¹ Source: M2 TED Non-Institutional Detail (Procedure Code = 8****), includes both Technical and Professional services. Based on "Parent" PRISM.

² Purchased Care includes 13% increase for overhead burdening.

Staffing

Patrick – Staffing¹

All MEPRS Codes, No Limitation on Skill Type

Assigned FTEs

Tmt Parent DMIS ID	Tmt DMIS ID	Tmt DMIS ID Name	2017					2018				
			CIV	CON	MIL	OTH	TOTAL	CIV	CON	MIL	OTH	TOTAL
0046	0046	AF-C-45th MEDGRP-PATRICK	71.4		160.2		231.6	68.2		162.2		230.5
	1776	AF-D-45th DENTAL FLT-PATRICK	5.8		8.9		14.7	6.0		9.0		15.0
0046 Total			77.2	0.0	169.1	0.0	246.4	74.2	0.0	171.2	0.0	245.4

Available FTEs

Tmt Parent DMIS ID	Tmt DMIS ID	Tmt DMIS ID Name	2017					2018				
			CIV	CON	MIL	OTH	TOTAL	CIV	CON	MIL	OTH	TOTAL
0046	0046	AF-C-45th MEDGRP-PATRICK	57.5	46.6	146.6	5.7	256.4	55.9	46.0	149.5	8.4	259.8
	1776	AF-D-45th DENTAL FLT-PATRICK	4.1	2.8	5.9		12.8	4.2	2.3	7.1		13.6
0046 Total			61.6	49.4	152.5	5.7	269.2	60.1	48.3	156.7	8.4	273.4

¹ Source: M2 MEPRS Personnel Detail. Based on Parent DMIS ID, information listed by Child DMIS ID.

Patrick – Staffing (Available FTEs)¹

MEPRS B

0046 AF-C-45th MEDGRP-PATRICK											
Skill Type	Skill Type and Suffix Desc	2017					2018				
		CIV	CON	MIL	OTH	TOTAL	CIV	CON	MIL	OTH	TOTAL
1P	PHYSICIAN	1.3	0.8	5.9		8.1	0.8	0.9	5.7		7.4
2N	NURSE PRACTITIONER		0.4	1.3		1.7		0.3	1.7		2.0
2P	PHYSICIAN ASSISTANT			3.8		3.8		1.0	3.6		4.6
2Z	ALL OTHERS IN SKILL TYPE 2	2.0	3.7	1.7		7.4	1.2	3.9	1.1		6.2
3R	REGISTERED NURSE	4.5	4.9	0.9		10.4	4.3	3.4	1.2		8.9
3Z	ALL OTHERS IN SKILL TYPE 3			0.0		0.0		0.0	0.0		0.0
4L	LPN/LVN	6.2				6.2	4.8				4.8
4Z	ALL OTHERS IN SKILL TYPE 4	1.2	0.5	19.7		21.3	1.7	0.9	23.5		26.0
5A	ADMINISTRATORS					0.0	0.4				0.4
5C	CLERICAL			1.6		1.6			1.7		1.7
5Z	ALL OTHERS IN SKILL TYPE 5	3.1	0.3	0.1		3.5	3.5	0.8	0.9		5.3
Grand Total		18.4	10.7	35.1	0.0	64.1	16.6	11.2	39.4	0.0	67.2

¹ Source: M2 MEPRS Personnel Detail. Based on Child DMIS ID.

Patrick – Staffing (Available FTEs)¹

All MEPRS

0046 AF-C-45th MEDGRP-PATRICK											
Skill Type	Skill Type and Suffix Desc	2017					2018				
		CIV	CON	MIL	OTH	TOTAL	CIV	CON	MIL	OTH	TOTAL
1D	DENTIST			1.1		1.1			0.7		0.7
1P	PHYSICIAN	1.4	0.9	8.5		10.7	0.8	0.9	8.5		10.2
2N	NURSE PRACTITIONER		0.5	2.4		2.9		0.3	2.2		2.5
2P	PHYSICIAN ASSISTANT			4.1		4.1		1.1	3.9		5.0
2Z	ALL OTHERS IN SKILL TYPE 2	4.7	11.2	7.6		23.5	4.1	11.0	7.0		22.1
3E	NURSE CASE MANAGER					0.0	0.8				0.8
3R	REGISTERED NURSE	8.1	5.9	3.2		17.2	7.5	4.0	2.7		14.1
3Z	ALL OTHERS IN SKILL TYPE 3		0.8	2.2		3.0		1.3	1.4		2.6
4L	LPN/LVN	6.4				6.4	4.9				4.9
4Z	ALL OTHERS IN SKILL TYPE 4	10.1	2.6	67.1		79.9	9.8	3.6	66.3		79.6
5A	ADMINISTRATORS	8.2	1.0	8.0		17.2	8.5	1.0	8.0		17.5
5C	CLERICAL	5.8	13.3	9.7	5.7	34.6	5.9	11.9	9.6	8.4	35.7
5L	LOGISTICS	1.8	6.5	6.6		14.9	2.5	6.5	7.8		16.8
5Z	ALL OTHERS IN SKILL TYPE 5	11.1	3.9	26.0		41.0	11.3	4.5	31.5		47.3
Grand Total		57.5	46.6	146.6	5.7	256.4	55.9	46.0	149.5	8.4	259.8

1776 AF-D-45th DENTAL FLT-PATRICK											
Skill Type	Skill Type and Suffix Desc	2017					2018				
		CIV	CON	MIL	OTH	TOTAL	CIV	CON	MIL	OTH	TOTAL
1D	DENTIST			1.5		1.5			2.1		2.1
4Z	ALL OTHERS IN SKILL TYPE 4	4.1	2.8	4.4		11.3	4.2	2.3	5.0		11.5
5L	LOGISTICS			0.0		0.0					0.0
Grand Total		4.1	2.8	5.9	0.0	12.8	4.2	2.3	7.1	0.0	13.6

¹ Source: M2 MEPRS Personnel Detail. Based on Child DMIS ID.

Patrick – Skill Type 1P (Physician) by DoD Occupation Code¹ (Available FTEs)

0046 AF-C-45th MEDGRP-PATRICK											
DoD Occ Code		2017					2018				
		CIV	CON	MIL	OTH	TOTAL	CIV	CON	MIL	OTH	TOTAL
260101	AVIATION/AEROSPACE MEDICINE, RESIDENCY TRAINED AER					0.0			0.0		0.0
260105	EXECUTIVE MEDICINE			0.9		0.9			0.6		0.6
260109	GENERAL MEDICINE			0.1		0.1			0.4		0.4
260111	FAMILY PRACTICE	1.3		1.8		3.1	0.8		2.2		2.9
260121	PEDIATRICS, GENERAL		0.8	0.7		1.6		0.9	0.8		1.8
260125	PSYCHIATRY			0.7		0.7			0.5		0.5
260151	AVIATION/AEROSPACE MEDICINE, RESIDENCY TRAINED OTH			0.3		0.3					0.0
260152	AVIATION/AEROSPACE MEDICINE NON-RESIDENCY TRAINED			1.3		1.3			1.2		1.2
TOTAL		1.3	0.8	5.9	0.0	8.1	0.8	0.9	5.7	0.0	7.4

MEPRS B
Only

¹ Source: M2 MEPRS Personnel Detail. Based on Child DMIS ID.

Eligible Population and Enrollment

Patrick – Eligibles and Enrollees¹ by PRISM and Enrollment Site (Child)

PRISM (for Elig) / Enrollment Site (for Enr)		FY	Eligibles					Prime and Plus Enrolled				
			ADFM	RET	OTHER ²	AD	TOTAL	ADFM	RET	OTHER ²	AD	TOTAL
0046	AF-C-45th MEDGRP-PATRICK	2014	3,943	11,235	16,431	2,196	33,804	3,256	3,849	5,500	2,017	14,621
0046	AF-C-45th MEDGRP-PATRICK	2015	3,763	11,334	16,656	2,083	33,836	3,200	4,012	5,762	1,907	14,881
0046	AF-C-45th MEDGRP-PATRICK	2016	3,794	11,405	16,541	2,087	33,827	3,214	3,887	5,454	1,939	14,493
0046	AF-C-45th MEDGRP-PATRICK	2017	3,847	11,480	16,672	2,214	34,213	3,087	3,661	4,965	2,028	13,741
0046	AF-C-45th MEDGRP-PATRICK	2018	3,640	11,476	16,865	2,136	34,117	2,934	3,472	4,924	2,034	13,364

¹ Source: Eligibles = M2 DEERS Person Detail; Enrollees = M2 TRICARE Relationship Detail. Eligibles based on PRISM Area ID. Enrollees based on Enrollment Site and ACV Group = Prime or Plus.

² Includes FM of Retired, Survivors, Other, Unknown, Inactive Guard/Reserve, FM of Inactive Guard/Reserve

Patrick – Eligibles¹ by PRISM Area ID

0046 AF-C-45th MEDGRP-PATRICK										
Gender by Age Group										
Gender	FY	0-4	5-14	15-17	18-24	25-34	35-44	45-64	65+	Total
Female	2014	468	1,212	513	1,099	1,017	1,143	5,097	7,010	17,560
	2015	490	1,207	500	1,120	1,020	1,139	5,040	7,022	17,537
	2016	510	1,244	474	1,059	1,052	1,123	5,011	7,040	17,513
	2017	506	1,329	469	1,038	1,042	1,159	5,041	7,077	17,661
	2018	485	1,369	462	999	1,062	1,152	4,971	7,094	17,593
Male	2014	531	1,296	506	1,166	1,198	972	4,621	5,956	16,245
	2015	561	1,318	471	1,169	1,210	1,012	4,546	6,012	16,298
	2016	575	1,344	463	1,110	1,272	984	4,537	6,031	16,315
	2017	575	1,396	487	1,081	1,330	1,052	4,611	6,019	16,552
	2018	547	1,431	505	1,041	1,291	1,090	4,571	6,049	16,524
Total	2014	999	2,508	1,018	2,265	2,215	2,114	9,718	12,966	33,804
	2015	1,051	2,524	971	2,289	2,230	2,151	9,586	13,034	33,836
	2016	1,084	2,588	937	2,168	2,324	2,107	9,547	13,071	33,827
	2017	1,081	2,725	957	2,119	2,372	2,211	9,652	13,096	34,213
	2018	1,031	2,800	966	2,041	2,353	2,242	9,542	13,142	34,117

0046 AF-C-45th MEDGRP-PATRICK						
Gender by Ben Cat Common						
Gender	FY	ADFM	RET	OTHER	AD	Total
Female	2014	2,530	651	14,000	380	17,560
	2015	2,428	708	14,052	350	17,537
	2016	2,444	757	13,965	346	17,513
	2017	2,481	812	14,013	355	17,661
	2018	2,344	808	14,096	346	17,593
Male	2014	1,413	10,584	2,431	1,816	16,245
	2015	1,335	10,626	2,604	1,733	16,298
	2016	1,350	10,648	2,577	1,740	16,315
	2017	1,365	10,668	2,659	1,859	16,552
	2018	1,295	10,669	2,769	1,791	16,524
Total	2014	3,943	11,235	16,431	2,196	33,804
	2015	3,763	11,334	16,656	2,083	33,836
	2016	3,794	11,405	16,541	2,087	33,827
	2017	3,847	11,480	16,672	2,214	34,213
	2018	3,640	11,476	16,865	2,136	34,117

¹ Source: M2 DEERS Person Detail

Update History

- ❑ Version 1: New portfolio template. Direct Care costs for FY13 are based on FY13 MEPRS expenses; FY14 is based on FY13 MEPRS with inflation factors applied. May 2015.
- ❑ Version 2: Updated FY14 data; added FY15 data; added Pharmacy, Radiology, and Laboratory data; added additional views of eligible data; added Ambulatory Surgery Top 20 Procedures. FY14 Direct Care Costs are based on FY14 MEPRS expenses; FY15 Direct Care Costs are based on FY14 MEPRS with inflation factors applied. March 2016.
- ❑ Version 3: Updated FY15 data; added FY16 data; added Appointment Data. FY15 Direct Care Costs are based on FY15 MEPRS expenses; FY16 Direct Care Costs are based on FY15 MEPRS with inflation factors applied. March 2017.
- ❑ Version 4: Updated FY16 data; added FY17 data. FY16 Direct Care Costs are based on FY16 MEPRS expenses; FY17 Direct Care Costs are based on FY16 MEPRS with inflation factors applied. March 2018.
- ❑ Version 5: Updated FY17 data; added FY18 data. FY17 Direct Care Costs are based on FY17 MEPRS expenses; FY18 Direct Care Costs are based on FY17 MEPRS with inflation factors applied. March 2019.