

DoD Consolidated Influenza Surveillance Report

Week 10 (01 March 2020— 07 March 2020)



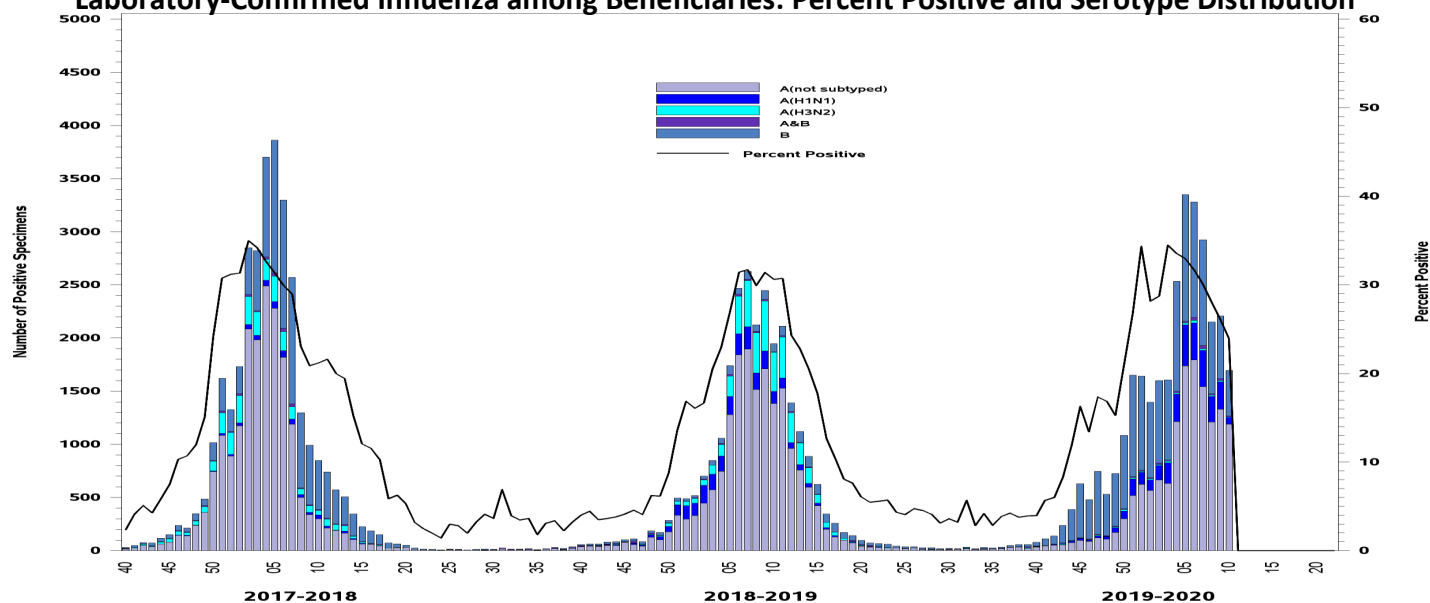
One Page Summary: Weekly Highlights

- Among all beneficiaries, laboratory-confirmed influenza cases and dispensed antiviral prescription counts continued to decrease. Inpatient counts among all beneficiaries decreased and had a low activity level.
- Among active component Service Members, laboratory-confirmed influenza cases and antiviral prescriptions decreased, but the activity level remained elevated for laboratory-confirmed cases and high for ILI outpatient visits.
- Seventeen installations had high ILI activity. (increase)
- Influenza A accounted for over half of the positive specimens in NORTHCOM. Influenza A continued to predominate in all other combatant commands with data; influenza A(H1N1) predominating among subtyped specimens.
- Four new laboratory-confirmed influenza hospitalizations were reported for week 10 (Season total: 206).

Influenza Surveillance Indicators (2019-2020 season)

All Beneficiaries	Total Per Week		Trend	Activity Level
Laboratory Cases	1705		◀▶	Normal
Dispensed Antivirals	2336		◀▶	Normal
Severity				Activity Level
Inpatient Laboratory Cases	4		◀▶	Low
Inpatient Dispensed Antivirals	37		▼	Low
Active Component				Activity Level
Laboratory Cases	463		◀▶	Elevated
Dispensed Antivirals	569		◀▶	Low
ILI Outpatient Visits	3%		◀▶	High

Laboratory-Confirmed Influenza among Beneficiaries: Percent Positive and Serotype Distribution

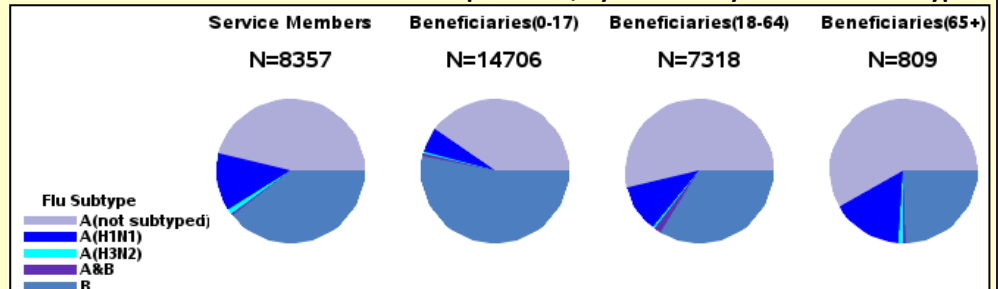


Disclaimer: Due to the transition to MHS GENESIS, data are not available from NH Oak Harbor, NH Bremerton, AFMS Fairchild, Madigan AMC, Travis AFB, Presidio of Monterey AB, NAS Lemoore, or Mountain Home AFB. Therefore, these sites are not included in this report.

Laboratory-Confirmed Influenza (2019-2020 Season: Week 10)

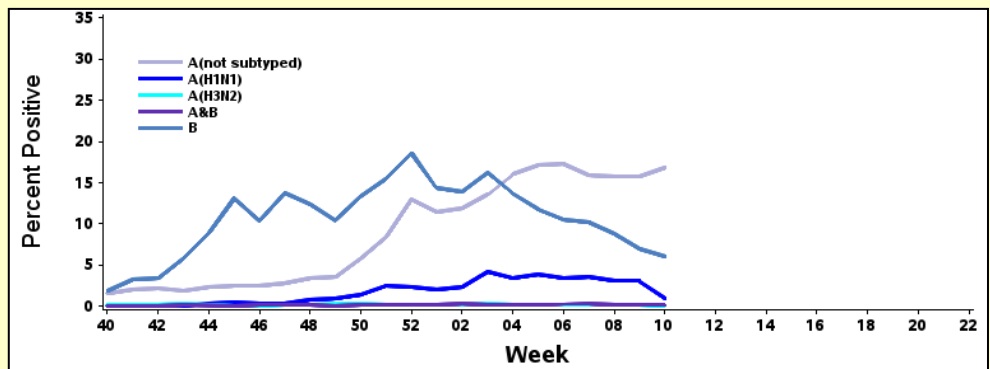
- Children continued to have the highest number of laboratory-confirmed influenza positive specimens at 14,706; Service Members continued to have the second highest count at 8,357.

Number and Distribution of Positive Specimens, by Beneficiary Status and Serotype



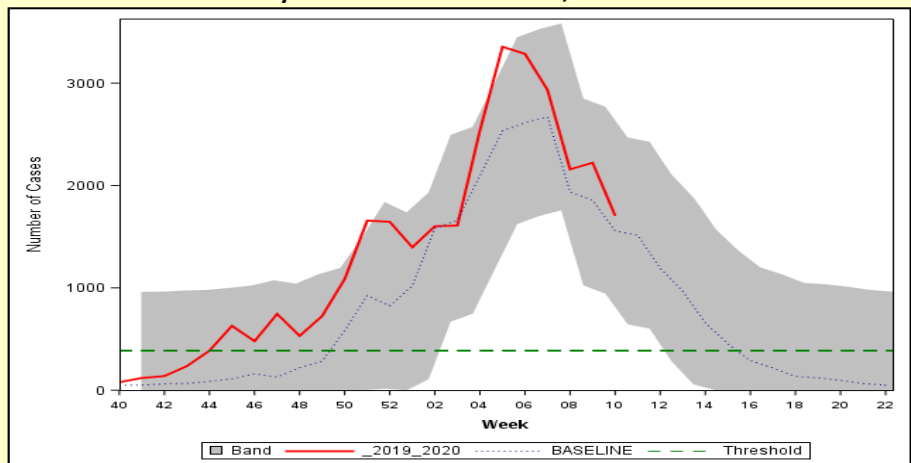
- The largest proportion of positive specimens continued to be Influenza A, with influenza B continued to decline.

Percent of Specimens Positive for Influenza by Serotype



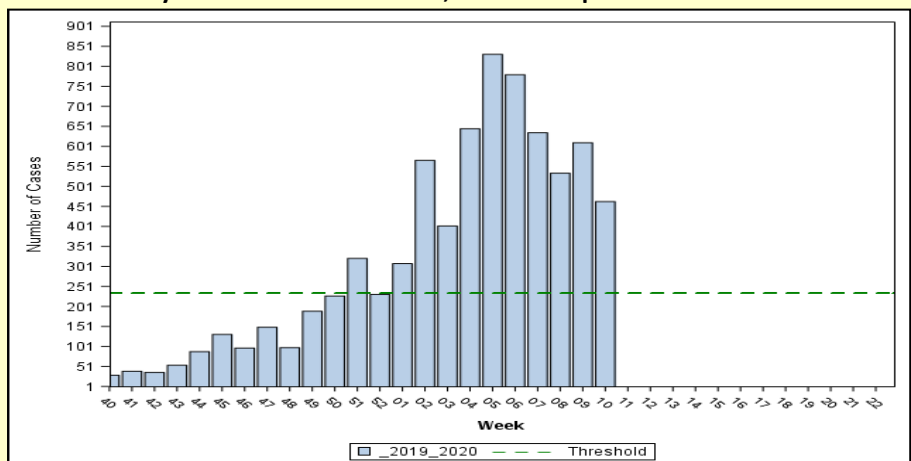
- The number of laboratory-confirmed cases among all beneficiaries continued to decrease, but remained higher than the weekly baseline and was well above the threshold.
- Band indicates one standard deviation above and below seasonal baseline estimates. Threshold indicates two standard deviations above off-season average.

Laboratory-Positive Influenza Cases, All Beneficiaries



- The number of active component Service Member laboratory-confirmed cases decreased, but remained above the threshold.
- Threshold indicates two standard deviations above seasonal baseline estimates.

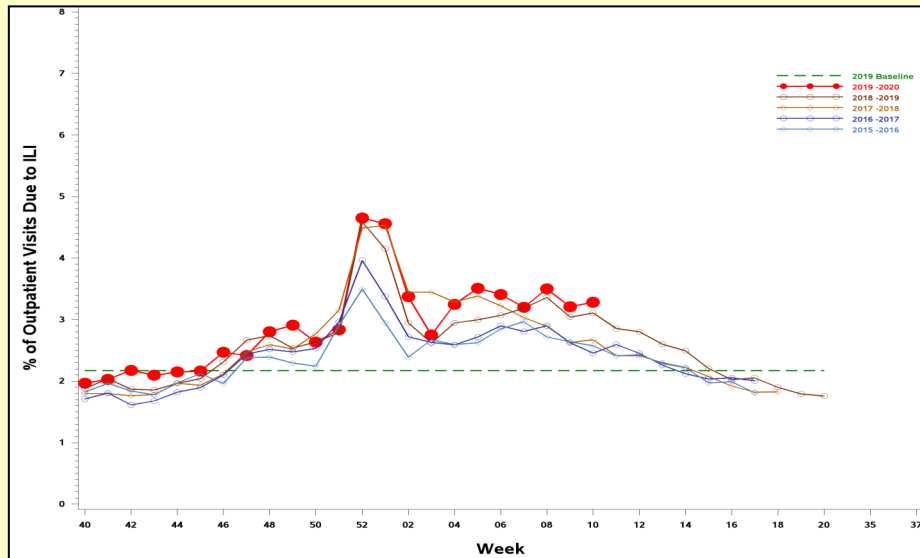
Laboratory-Positive Influenza Cases, Active Component Service Members



Disclaimer: Due to the transition to MHS GENESIS, data are not available from NH Oak Harbor, NH Bremerton, AFMS Fairchild, Madigan AMC, Travis AFB, Presidio of Monterey AB, NAS Lemoore, or Mountain Home AFB. Therefore, these sites are not included in this report.

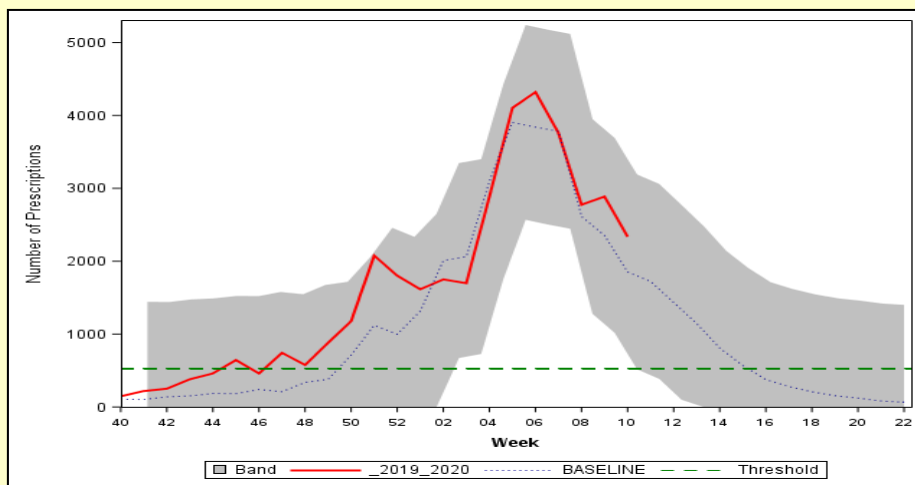
ILI and Dispensed Antiviral Prescriptions (2019-2020 Season: Week 10)

**Percent of Outpatient Visits Due to ILI:
Service Members, 2015-2016 to 2019-2020 Seasons**



- The percent of outpatient visits due to ILI among Service Members increased slightly and remained above baseline and prior seasons.
- The increase in ILIs may be due to co-circulation of COVID-19. AFHSB is investigating how and if COVID-19 encounters can be removed from the ILI counts in order to obtain a more reliable comparison to prior seasons and baselines.

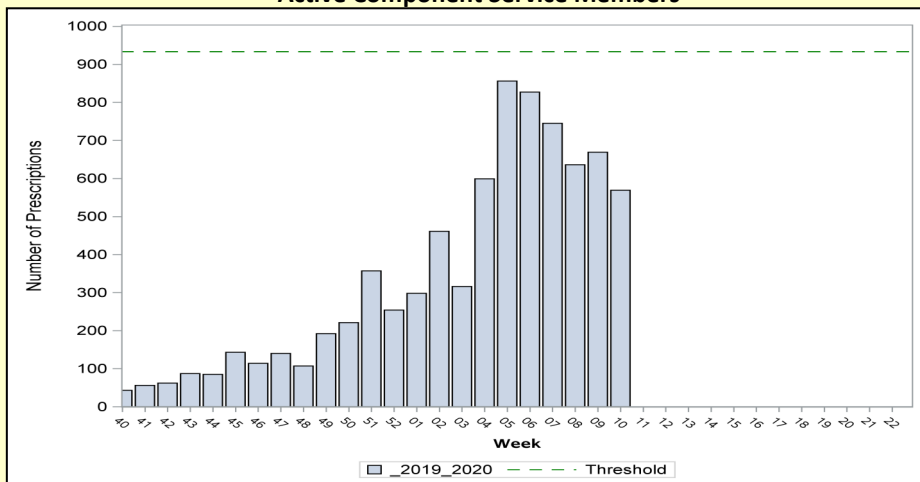
Influenza-Specific Dispensed Antiviral Prescriptions, All Beneficiaries



- Dispensed antiviral prescriptions among all beneficiaries continued to decrease, but remained higher than the weekly baseline and the threshold.
- Band indicates one standard deviation above and below seasonal baseline estimates. Threshold indicates two standard deviations above off-season average.

Influenza-Specific Dispensed Antiviral Prescriptions:

Active Component Service Members



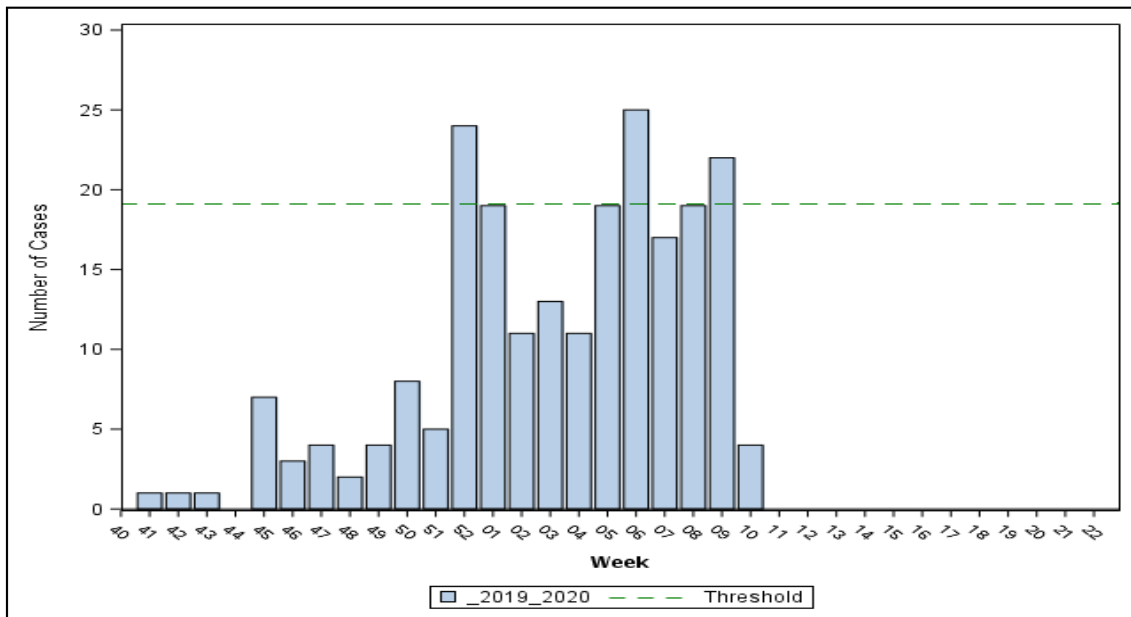
- Dispensed antiviral prescriptions among active component Service Members decreased and remained below the threshold.
- Threshold indicates two standard deviation above the overall weighted average during the season.

Disclaimer: Due to the transition to MHS GENESIS, data are not available from NH Oak Harbor, NH Bremerton, AFMS Fairchild, Madigan AMC, Travis AFB, Presidio of Monterey AB, NAS Lemoore, or Mountain Home AFB. Therefore, these sites are not included in this report.

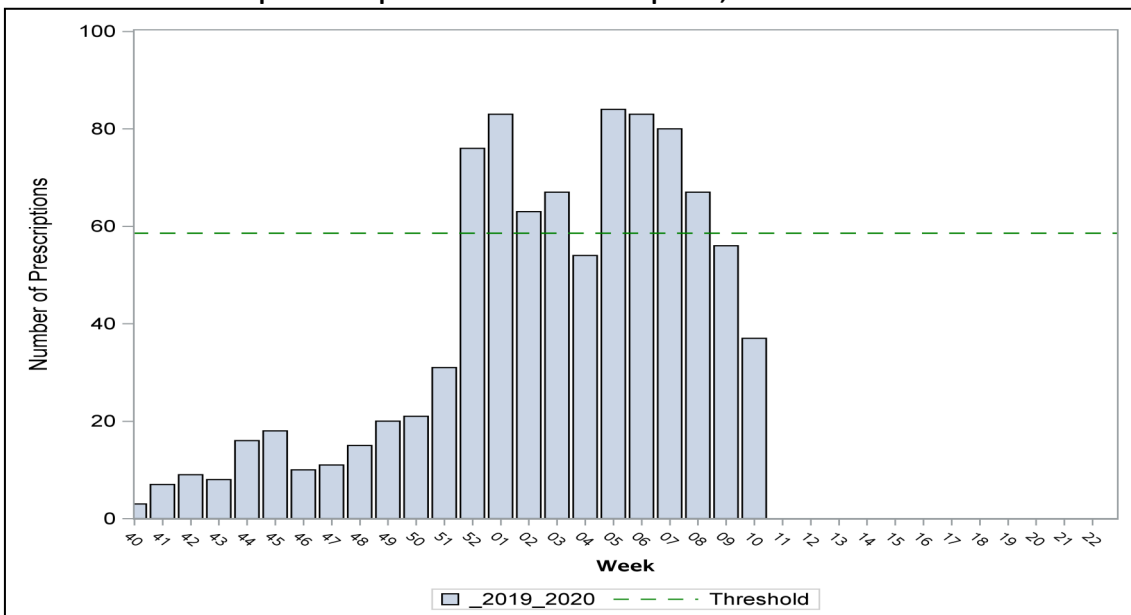
Severity: Hospitalized Influenza Metrics (2019-2020 Season: Week 10)

- Four new laboratory-confirmed influenza hospitalizations were reported for week 10; all among other beneficiaries (BN)
 - Three influenza A (H1N1): NMC San Diego (1) and JB San Antonio (2)
 - One influenza A (not subtyped): Ft. Bliss
- There have been 206 laboratory-confirmed influenza hospitalizations this season (22 Service Members / 184 BN)
- The number of inpatient dispensed antiviral prescriptions decreased and dropped below the threshold.
- Thresholds indicates one standard deviation above the overall weighted average during the season.

Hospitalized Laboratory-Positive Influenza Cases, All Beneficiaries



Inpatient Dispensed Antivirals Prescriptions, All Beneficiaries



Disclaimer: Due to the transition to MHS GENESIS, data are not available from NH Oak Harbor, NH Bremerton, AFMS Fairchild, Madigan AMC, Travis AFB, Presidio of Monterey AB, NAS Lemoore, or Mountain Home AFB. Therefore, these sites are not included in this report.

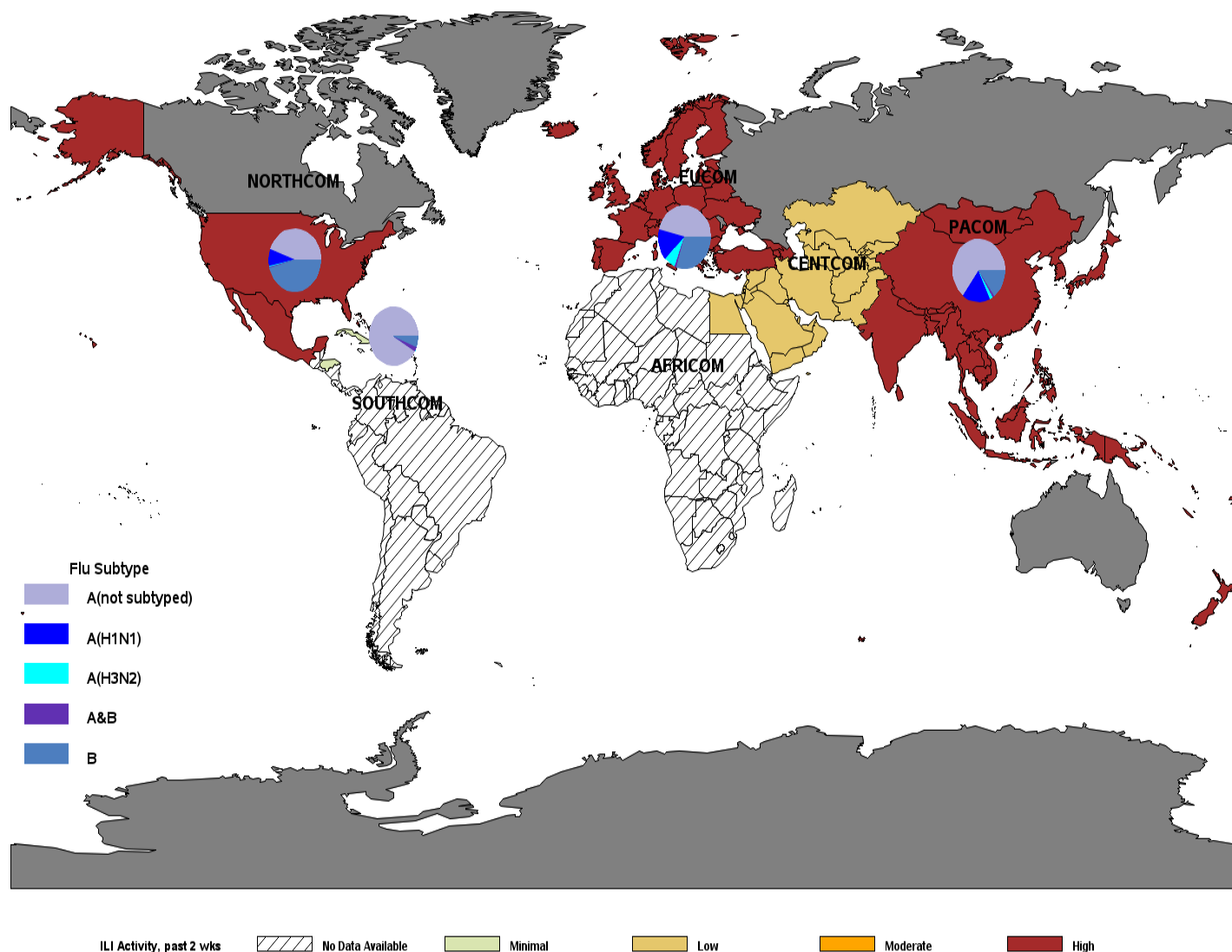
Influenza Activity: Geographic Combatant Command

(2019-2020 Season: Week 10)

- NORTHCOM: ILI activity remained high. Influenza A accounted for over half of the positive specimens. Among subtyped influenza A specimens, A(H1N1) has predominated.
- EUCOM: ILI activity remained high. Among positive specimens, the majority continued to be influenza A.
- INDOPACOM: ILI activity remained high. The majority of positive specimens continued to be influenza A. Among subtyped influenza A specimens, the majority were A(H1N1).
- SOUTHCOM: ILI activity remained minimal. The majority of specimens continued to be influenza A (not subtyped).
- CENTCOM: ILI activity decreased to low.

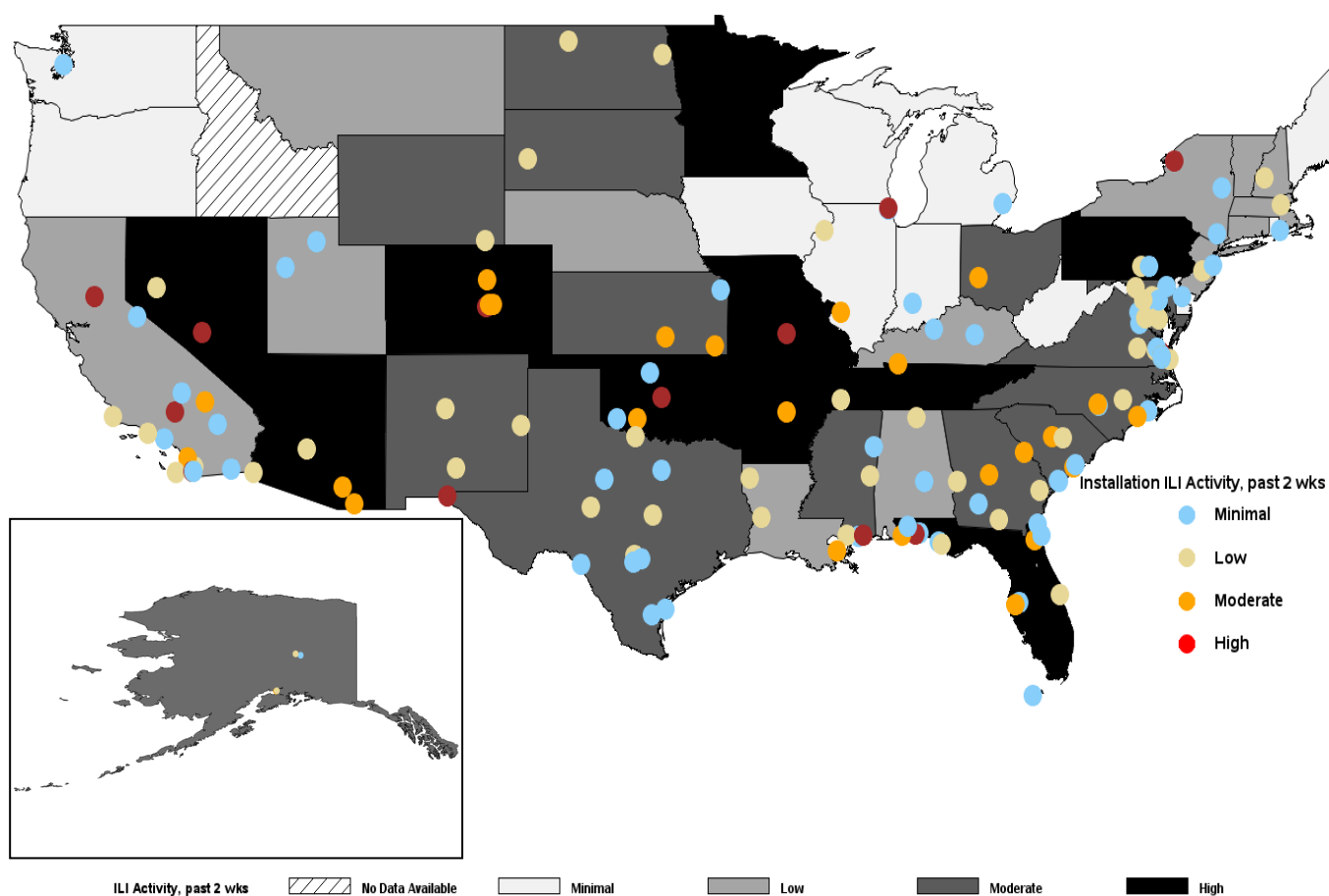
**** High ILI activity may be due to co-circulation of COVID-19. AFHSB is investigating how and if COVID-19 encounters can be removed from the ILI counts in order to obtain more reliable influenza-specific activity levels.**

ILI Activity (Service Members) and Laboratory-Confirmed Influenza (All Beneficiaries)



Influenza Activity: NORTHCOM (2019-2020 Season: Week 10)

- The majority of installations had minimal to low ILI activity. However, 35 installations had moderate ILI activity and 17 installations had high ILI activity.
- At the state level, ILI activity remained similar to last week and was low to moderate for the majority of states. However, 10 states had high activity.
- State level data includes both Military Treatment Facility (MTF) and outsourced care. Therefore, state activity levels may differ from the installation level data.
- Installation-level laboratory data can be found on pages 11-13 of the report.



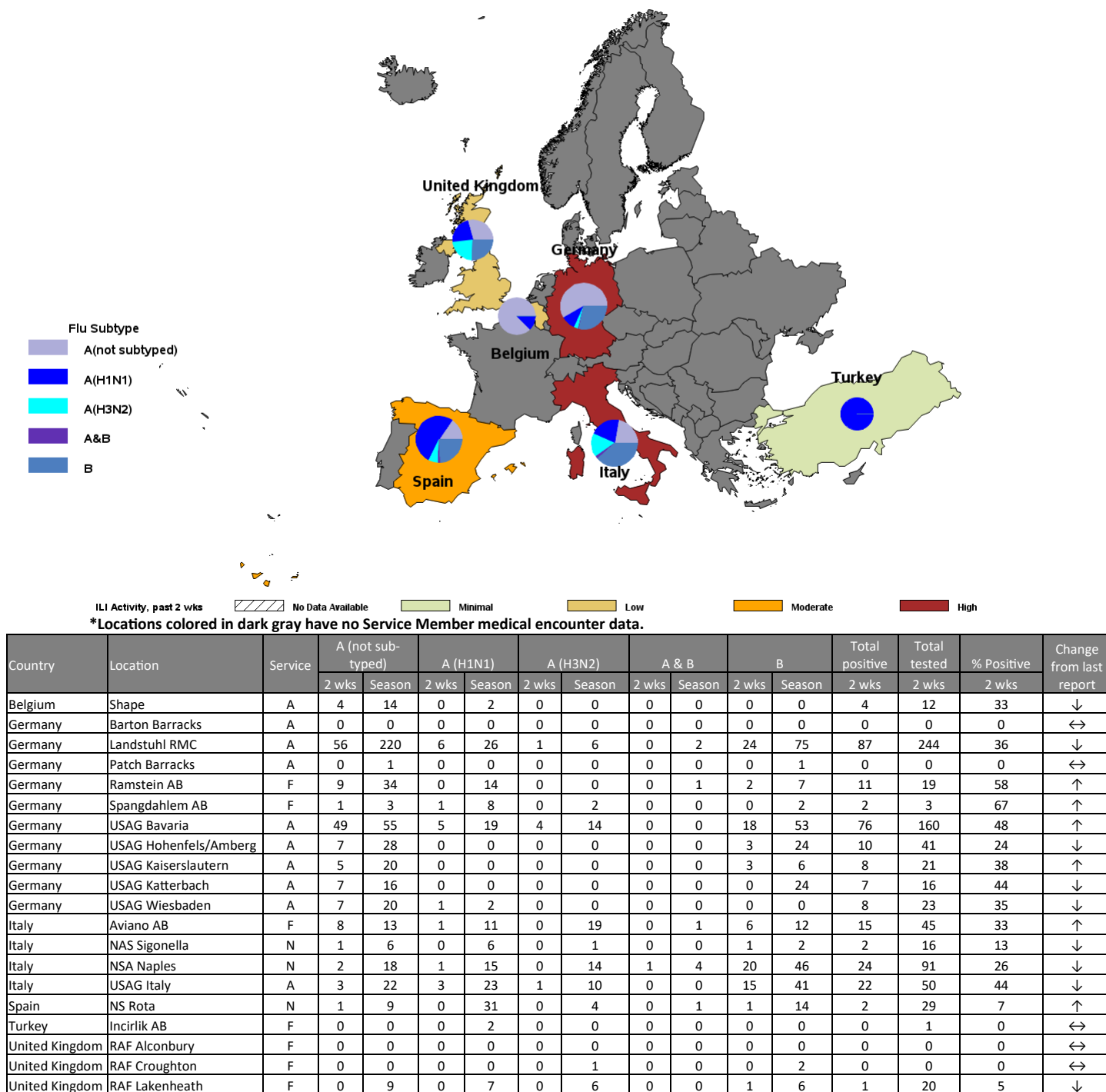
Disclaimer: Due to the transition to MHS GENESIS, data are not available from NH Oak Harbor, NH Bremerton, AFMS Fairchild, Madigan AMC, Travis AFB, Presidio of Monterey AB, NAS Lemoore, or Mountain Home AFB. Therefore, these sites are not included in this report.

Influenza Activity: EUCOM (2019-2020 Season: Week 10)

- ILI activity increased to high in Germany and low in the United Kingdom, and Belgium; ILI activity remained high in Italy, moderate in Spain and minimal in the Turkey.
- The majority of positive specimens in the past 2 weeks were influenza A. Among subtyped influenza A specimens, the majority continued to be A(H1N1).

**** Increases and high ILI activity may be due to co-circulation of COVID-19. AFHSB is investigating how and if COVID-19 encounters can be removed from the ILI counts in order to obtain more reliable influenza-specific activity levels.**

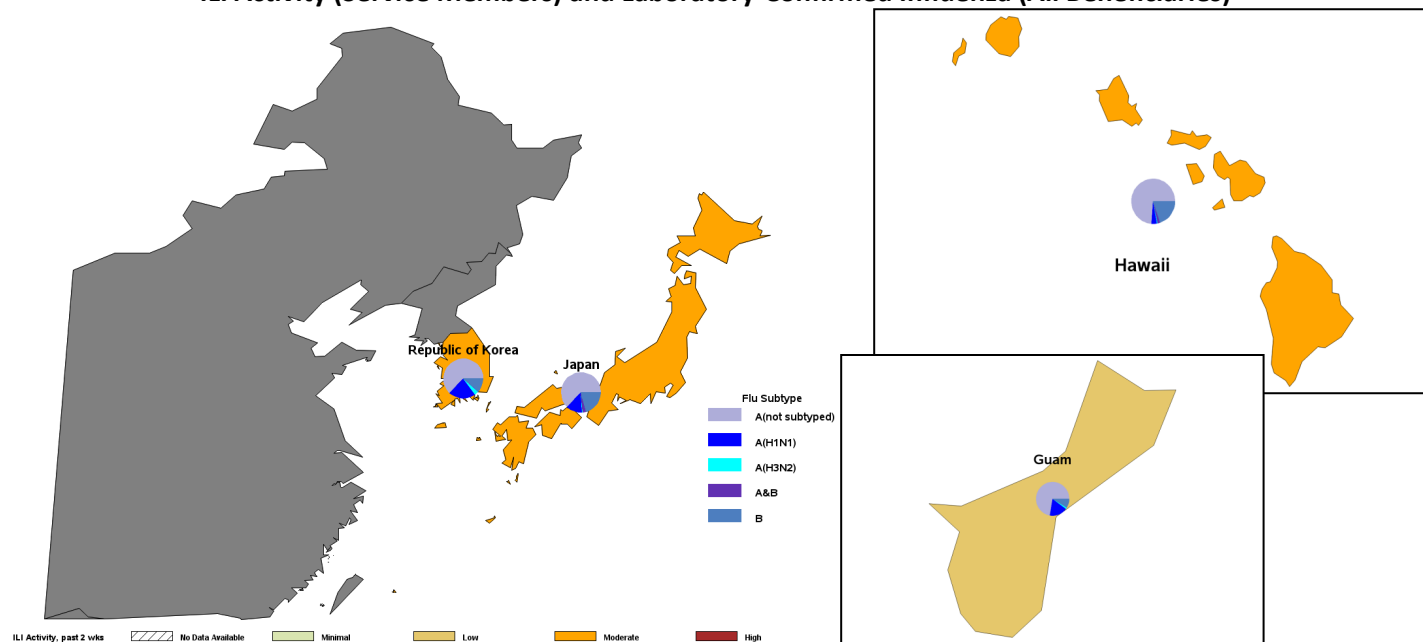
ILI Activity (Service Members) and Laboratory-Confirmed Influenza (All Beneficiaries)



Influenza Activity: INDOPACOM (2019-2020 Season: Week 10)

- ILI activity increased to low in Guam, decreased to moderate in the Republic of Korea, and remained moderate in Japan and Hawaii.
- The majority of positive specimens over the past 2 weeks continued to be influenza A.
- Among subtyped specimens, the majority have been influenza A(H1N1) for the season.

ILI Activity (Service Members) and Laboratory-Confirmed Influenza (All Beneficiaries)



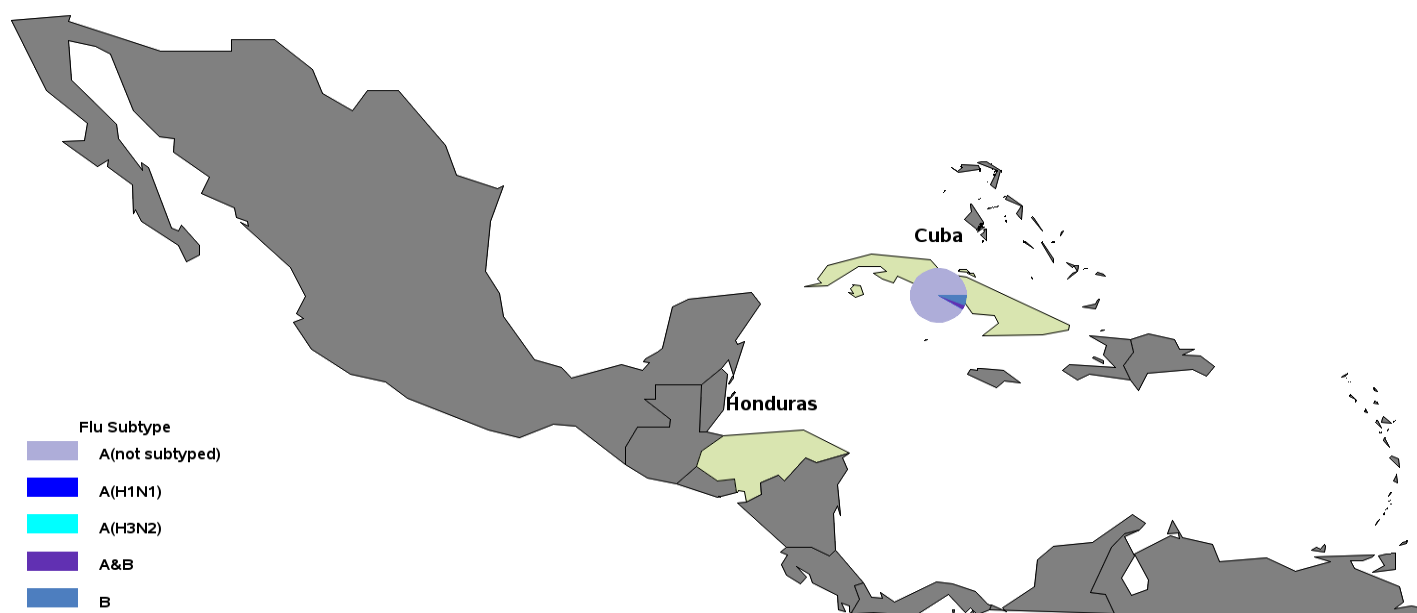
*Locations colored in dark gray have no Service Member medical encounter data.

Country	Location	Service	A (not sub-typed)		A (H1N1)		A (H3N2)		A & B		B		Total positive	Total tested	% Positive	Change from last report
			2 wks	Season	2 wks	Season	2 wks	Season	2 wks	Season	2 wks	Season	2 wks	2 wks	2 wks	
Guam	JB Andersen	J	2	102	0	25	0	2	0	0	1	12	3	51	6	↑
Japan	CFA Okinawa	N	0	21	0	0	0	0	0	0	3	15	3	22	14	↓
Japan	CFA Yokosuka	N	3	59	0	0	0	0	1	3	2	6	6	39	15	↑
Japan	Camp Foster	N	0	3	0	0	0	0	0	0	0	0	0	6	0	↔
Japan	Camp Fuji	N	0	0	0	0	0	0	0	0	0	0	0	0	0	↔
Japan	Camp Zama	A	0	18	0	0	0	0	1	4	0	12	1	11	9	↑
Japan	Kadena AB	F	1	4	1	7	0	1	0	0	0	2	2	10	20	↓
Japan	MCAS Futenma	N	0	3	0	0	0	0	0	0	0	1	0	3	0	↔
Japan	MCAS Iwakuni	N	0	24	0	0	0	0	0	1	0	2	0	7	0	↔
Japan	Misawa AB	F	0	20	0	0	0	0	0	1	15	18	15	45	33	↑
Japan	NAF Atsugi	N	0	8	0	0	0	0	0	0	0	6	0	6	0	↔
Japan	NB Okinawa	N	1	51	0	0	0	0	0	1	1	6	2	63	3	↔
Japan	USFA Sasebo	N	0	2	0	0	0	0	0	0	0	2	0	4	0	↔
Japan	Yokota AB	F	0	18	0	42	0	0	0	1	0	4	0	14	0	↔
Korea, Republic of	CFA Chinhae	N	0	0	0	0	0	0	0	0	0	0	0	0	0	↔
Korea, Republic of	Camp Casey	A	0	4	0	0	0	0	0	0	0	0	0	1	0	↔
Korea, Republic of	Camp Humphreys	A	0	62	0	0	0	0	0	0	1	3	1	22	5	↓
Korea, Republic of	Camp Walker	A	0	17	0	0	0	0	0	0	0	2	0	3	0	↔
Korea, Republic of	Kunsan AB	F	0	1	0	4	0	1	0	0	0	0	0	1	0	↔
Korea, Republic of	Osan AB	F	0	15	1	70	0	12	0	0	1	8	2	15	13	↓
Korea, Republic of	Yongsan Garrison	A	0	108	0	1	0	0	0	0	3	23	3	81	4	↓
United States	Camp H M Smith	N	0	0	0	0	0	0	0	0	0	0	0	0	0	↔
United States	Ft Shafter	A	28	252	2	24	0	4	0	8	7	66	37	135	27	↓
United States	JB Pearl Harbor-Hickam	J	14	94	0	1	0	0	0	2	9	27	23	57	40	↑
United States	MCB Hawaii	N	6	25	0	1	0	0	0	0	1	7	7	19	37	↓
United States	Schofield Barracks	A	26	104	0	0	0	0	0	1	5	27	31	82	38	↓

Influenza Activity: SOUTHCOM (2019-2020 Season: Week 10)

- ILI activity remained minimal in Cuba and Honduras.
- The majority of positive specimens continued to be Influenza A.

ILI Activity (Service Members) and Laboratory-Confirmed Influenza (All Beneficiaries)



ILI Activity, past 2 wks

No Data Available	Minimal	Low	Moderate	High
-------------------	---------	-----	----------	------

*Locations colored in dark gray have no Service Member medical encounter data.

Country	Location	Service	A (not sub-typed)		A (H1N1)		A (H3N2)		A & B		B		Total posi-tive	Total tested	% Positive	Change from last report
			2 wks	Season	2 wks	Season	2 wks	Season	2 wks	Season	2 wks	Season	2 wks	2 wks	2 wks	
Cuba	Guantanamo Bay	N	1	33	0	0	0	0	0	1	0	2	1	7	14	↓

Influenza Activity: CENTCOM (2019-2020 Season: Week 10)

- ILI activity was minimal to low among CENTCOM countries with available data.

ILI Activity (Service Members)



*Locations colored in dark gray have no Service Member medical encounter data.

NORTHCOM Laboratory-Confirmed Influenza

(2019-2020 Season: Week 10)

Laboratory-Confirmed Influenza (All Beneficiaries) by Installation Alaska through Georgia

State	Location	Service	A (not subtyped)		A (H1N1)		A (H3N2)		A & B		B		Total positive	Total tested	% Positive	Change from last report
			2 wks	Season	2 wks	Season	2 wks	Season	2 wks	Season	2 wks	Season	2 wks	2 wks	2 wks	
AK	Eielson AFB	F	0	0	0	0	0	0	0	0	0	16	0	4	0	↔
AK	Ft Greely	A	3	3	0	0	0	0	0	0	1	9	4	9	44	↑
AK	Ft Wainwright	A	28	112	0	16	0	0	0	0	10	181	38	155	25	↑
AK	JB Elmendorf-Richardson	J	18	88	0	16	0	3	0	0	6	169	24	108	22	↓
AL	Ft Rucker	A	2	50	0	0	0	0	0	0	0	65	2	64	3	↑
AL	Maxwell AFB	F	9	78	2	20	0	0	0	3	3	36	14	56	25	↓
AL	Redstone Arsenal	A	12	55	0	0	0	0	0	0	2	56	14	41	34	↑
AR	Little Rock AFB	F	5	8	16	60	0	0	1	1	9	45	31	75	41	↓
AZ	Davis-Monthan AFB	F	2	7	3	21	0	0	0	0	0	25	5	19	26	↓
AZ	Ft Huachuca	A	16	87	2	20	0	0	0	0	10	71	28	115	24	↑
AZ	Luke AFB	F	5	26	4	23	0	2	0	2	1	51	10	33	30	↑
AZ	MCAS Yuma	N	0	1	0	2	0	0	0	0	0	7	0	5	0	↔
CA	Beale AFB	F	7	37	0	0	0	0	0	0	5	22	12	38	32	↑
CA	Camp Pendleton	N	18	200	10	152	1	22	0	3	18	294	47	176	27	↓
CA	Edwards AFB	F	6	20	0	0	0	0	0	0	2	9	8	16	50	↓
CA	Ft Irwin	A	11	132	0	0	0	0	0	0	4	91	15	124	12	↓
CA	Los Angeles AFB	F	0	2	0	0	0	0	0	0	0	4	0	0	0	↔
CA	MBHC Eastlake	N	0	0	0	9	0	0	0	0	0	5	0	7	0	↔
CA	NAF El Centro	N	0	0	0	4	0	0	0	0	0	0	0	4	0	↔
CA	NB Coronado	N	0	0	2	7	0	0	0	0	0	5	2	11	18	↑
CA	NB San Diego	N	3	26	34	367	7	29	0	10	14	250	58	356	16	↑
CA	NV Ventura County	N	0	0	0	0	0	1	0	0	0	2	0	0	0	↔
CA	Twentynine Palms	N	14	114	0	1	0	0	0	0	4	174	18	118	15	↓
CA	Vandenberg AFB	F	1	15	0	0	0	0	2	4	0	6	3	3	100	↔
CO	Buckley AFB	F	4	21	0	0	0	0	0	0	1	21	5	27	19	↓
CO	Ft Carson	A	64	470	0	2	0	0	3	7	23	491	90	419	21	↓
CO	Peterson AFB	F	1	12	1	48	0	2	0	0	0	46	2	13	15	↑
CO	Schriever AFB	F	0	1	1	9	0	1	0	0	0	9	1	5	20	↓
CO	USAF Academy	F	5	37	3	19	0	1	2	4	14	108	24	61	39	↑
CT	NSB New London	N	7	21	0	0	0	0	0	1	2	37	9	36	25	↑
DC	JB Anacostia-Bolling	F	0	3	0	1	0	0	0	0	0	7	0	8	0	↔
DC	Pentagon	J	3	47	0	0	0	0	0	0	1	10	4	30	13	↓
DC	Washington Navy Yard	N	1	4	0	0	0	0	0	0	0	9	1	8	13	↑
DE	Dover AFB	F	5	7	11	40	0	0	0	1	6	40	22	49	45	↓
FL	Eglin AFB	J	15	165	8	64	0	1	0	3	7	92	30	125	24	↔
FL	Hurlburt Field	F	6	27	0	0	0	0	0	1	1	11	7	29	24	↓
FL	MacDill AFB	F	15	143	0	3	0	2	0	0	10	117	25	107	23	↑
FL	NAS Jacksonville	J	40	357	0	1	0	0	1	4	7	211	48	240	20	↓
FL	NAS Key West	J	1	9	0	0	0	0	0	0	0	2	1	3	33	↑
FL	NAS Pensacola	N	34	230	0	0	0	0	0	2	12	227	46	254	18	↑
FL	NAS Whiting Field	N	4	14	0	0	0	0	0	0	0	12	4	17	24	↑
FL	NS Mayport	J	7	53	0	0	0	0	0	1	3	35	10	32	31	↑
FL	Patrick AFB	F	8	43	0	0	0	0	0	1	0	35	8	38	21	↓
FL	Tyndall AFB	F	2	5	0	0	0	0	0	1	0	9	2	6	33	↑
GA	Ft Benning	A	45	518	0	0	0	2	0	9	13	333	58	374	16	↑
GA	Ft Gordon	A	36	281	1	2	0	0	0	2	1	117	38	205	19	↓
GA	Ft Stewart	A	13	252	0	0	0	0	0	4	6	150	19	126	15	↔
GA	Hunter Army Airfield	A	0	20	0	0	0	0	0	0	3	29	3	27	11	↑
GA	Moody AFB	F	2	8	1	33	0	0	0	0	1	12	4	14	29	↑
GA	NAS Albany	J	2	12	0	0	0	0	0	0	0	14	2	12	17	↑
GA	NSB Kings Bay	J	4	43	0	0	0	0	0	1	1	17	5	49	10	↑
GA	Robins AFB	F	0	2	5	47	0	0	0	0	1	19	6	18	33	↓

Disclaimer: Due to the transition to MHS GENESIS, data are not available from NH Oak Harbor, NH Bremerton, AFMS Fairchild, Madigan AMC, Travis AFB, Presidio of Monterey AB, NAS Lemoore, or Mountain Home AFB. Therefore, these sites are not included in this report.

NORTHCOM Laboratory-Confirmed Influenza

(2019-2020 Season: Week 10)

Laboratory-Confirmed Influenza (All Beneficiaries) by Installation Illinois through New York

State	Location	Service	A (not subtyped)		A (H1N1)		A (H3N2)		A & B		B		Total positive	Total tested	% Positive	Change from last report
			2 wks	Season	2 wks	Season	2 wks	Season	2 wks	Season	2 wks	Season	2 wks	2 wks	2 wks	
IL	NS Great Lakes	N	64	330	2	9	0	1	0	2	13	353	79	309	26	↓
IL	Scott AFB	F	9	12	11	55	0	0	0	1	11	58	31	83	37	↓
KS	Ft Leavenworth	A	21	98	0	0	0	0	0	0	12	85	33	92	36	↓
KS	Ft Riley	A	57	227	2	4	0	0	0	1	95	424	154	436	35	↓
KS	McConnell AFB	F	0	1	2	11	0	0	0	0	0	8	2	12	17	↓
KY	Ft Campbell	A	56	388	0	4	0	0	0	3	21	287	77	339	23	↑
KY	Ft Knox	A	1	22	0	0	0	0	0	0	1	9	2	10	20	↓
LA	Barksdale AFB	F	12	43	0	0	0	0	0	0	3	14	15	52	29	↑
LA	Ft Polk	A	57	205	0	0	0	0	0	2	12	143	69	211	33	↓
LA	NAS Belle Chase	N	3	8	0	0	0	0	0	0	1	4	4	18	22	↑
MA	Hanscom AFB	F	2	4	0	11	0	1	0	1	0	15	2	15	13	↓
MD	Aberdeen Proving Ground	A	2	26	0	0	0	0	0	0	3	31	5	24	21	↓
MD	Ft Detrick	A	8	28	0	0	0	0	0	0	10	52	18	63	29	↓
MD	Ft Meade	A	7	35	0	0	0	0	0	0	1	38	8	34	24	↑
MD	JB Andrews	F	47	202	0	0	0	1	2	7	13	190	62	218	28	↓
MD	NAS Patuxent River	N	17	60	0	0	0	0	1	3	3	54	21	74	28	↑
MD	NBHC Bancroft Hall	N	10	98	0	4	0	0	1	3	5	45	16	40	40	↔
MD	NHC Annapolis	N	20	75	0	0	0	0	0	2	0	22	20	43	47	↑
MD	NSF Indian Head	N	1	8	0	0	0	0	0	0	0	11	1	3	33	↓
MD	WRNMMC	J	88	392	5	23	0	1	0	2	26	362	119	413	29	↑
MO	Ft Leonard Wood	A	104	219	0	4	0	2	0	0	70	329	174	456	38	↔
MO	Whiteman AFB	F	19	48	0	0	0	0	0	0	11	40	30	78	38	↓
MS	Columbus AFB	F	1	6	0	0	0	0	0	0	0	8	1	6	17	↓
MS	Keesler AFB	J	36	207	1	3	0	0	0	0	0	183	37	148	25	↓
MS	NAS Meridian	N	2	19	0	0	0	0	0	0	1	8	3	16	19	↓
MS	NBHC Gulfport	N	3	22	0	0	0	0	0	0	2	32	5	22	23	↑
MT	Malmstrom AFB	F	1	5	3	11	0	0	0	1	2	7	6	11	55	↓
NC	Camp Lejeune	N	148	528	2	10	0	1	2	2	36	224	188	441	43	↓
NC	Ft Bragg	J	1	12	0	2	0	0	0	6	0	12	1	704	0	↔
NC	MCAS Cherry Point	N	3	48	0	0	0	0	0	0	13	55	16	69	23	↓
NC	Pope Army Airfield	J	0	0	0	0	0	0	0	6	0	0	0	92	0	↔
NC	Seymour Johnson AFB	J	5	8	6	24	0	3	0	1	4	16	15	30	50	↓
ND	Grand Forks AFB	F	1	2	0	0	0	0	0	0	1	9	2	5	40	↑
ND	Minot AFB	F	1	2	8	17	0	0	1	2	2	57	12	37	32	↓
NE	Offutt AFB	F	0	4	3	29	0	0	0	0	4	13	7	11	64	↑
NH	Portsmouth	N	3	14	0	0	0	0	0	0	3	14	6	20	30	↓
NJ	JB McGuire-Dix-Lakehurst	F	5	10	1	11	2	5	0	1	4	32	12	43	28	↓
NM	Cannon AFB	F	0	1	1	4	0	0	0	0	0	3	1	1	100	↓
NM	Holloman AFB	F	0	11	0	0	0	0	0	1	0	17	0	7	0	↔
NM	Kirtland AFB	F	0	8	1	13	0	2	0	0	1	14	2	19	11	↑
NM	White Sands Missile Range	A	1	11	0	0	0	0	0	0	0	4	1	4	25	↑
NV	Nellis AFB	F	30	215	1	44	0	5	0	0	3	203	34	129	26	↓
NY	Ft Drum	A	10	26	2	21	0	5	0	2	5	119	17	66	26	↑
NY	West Point	A	8	59	0	85	0	7	0	3	14	250	22	117	19	↓

Disclaimer: Due to the transition to MHS GENESIS, data are not available from NH Oak Harbor, NH Bremerton, AFMS Fairchild, Madigan AMC, Travis AFB, Presidio of Monterey AB, NAS Lemoore, or Mountain Home AFB. Therefore, these sites are not included in this report.

NORTHCOM Laboratory-Confirmed Influenza

(2019-2020 Season: Week 10)

Laboratory-Confirmed Influenza (All Beneficiaries) by Installation Ohio through Wyoming

State	Location	Service	A (not subtyped)		A (H1N1)		A (H3N2)		A & B		B		Total positive	Total tested	% Positive	Change from last report
			2 wks	Season	2 wks	Season	2 wks	Season	2 wks	Season	2 wks	Season	2 wks	2 wks	2 wks	
OH	Wright-Patterson AFB	F	9	17	42	242	0	4	1	6	30	254	82	219	37	↓
OK	Altus AFB	F	1	2	8	28	0	0	0	0	9	44	18	67	27	↓
OK	Ft Sill	A	100	247	0	2	0	0	0	3	9	207	109	327	33	↓
OK	Tinker AFB	F	5	7	13	63	0	0	0	1	2	49	20	66	30	↔
OK	Vance AFB	F	7	18	0	7	0	0	0	1	0	7	7	28	25	↑
PA	Carlisle Barracks	A	6	17	0	0	0	0	0	0	4	35	10	30	33	↑
PR	Ft Buchanan	A	2	19	0	0	0	0	0	0	1	16	3	34	9	↑
PR	NS Roosevelt Roads	N	0	2	0	0	0	0	0	0	0	0	0	0	0	↔
RI	NHC New England	N	1	23	0	5	0	0	0	0	7	19	8	39	21	↑
SC	Ft Jackson	A	35	205	0	0	0	0	1	1	16	204	52	242	21	↑
SC	JB Charleston	J	16	75	0	11	0	0	0	2	9	63	25	110	23	↓
SC	MCAS Beaufort	N	4	16	2	8	0	1	0	0	2	15	8	21	38	↑
SC	Parris Island	N	4	45	0	1	0	0	0	1	2	63	6	41	15	↑
SC	Shaw AFB	F	13	22	3	46	0	3	0	1	10	59	26	68	38	↓
SD	Ellsworth AFB	F	9	16	3	24	0	0	1	2	8	45	21	51	41	↓
TN	Ft Campbell	A	17	97	0	2	0	1	0	0	6	81	23	106	22	↑
TN	NSA Mid-South	N	5	23	0	0	0	0	0	0	1	7	6	20	30	↓
TX	Dyess AFB	F	3	33	0	0	0	0	0	2	3	22	6	17	35	↓
TX	Ft Bliss	A	63	609	1	95	0	6	1	5	16	829	81	526	15	↓
TX	Ft Hood	A	141	836	5	32	0	0	1	5	8	1174	155	714	22	↑
TX	Goodfellow AFB	F	14	42	0	0	0	0	0	3	4	31	18	81	22	↑
TX	JB San Antonio	J	147	1315	15	252	0	12	2	22	25	997	189	714	26	↓
TX	Laughlin AFB	F	2	11	0	2	0	0	0	3	0	15	2	10	20	↑
TX	NAS Corpus Christi	N	2	9	0	0	0	0	0	0	1	7	3	4	75	↓
TX	NAS JRB Fort Worth	N	1	1	0	0	0	0	0	0	0	1	1	1	100	↓
TX	NAS Kingsville	N	0	0	0	0	0	0	0	0	0	1	0	1	0	↔
TX	Sheppard AFB	F	15	43	18	55	0	0	0	1	1	37	34	95	36	↓
UT	Hill AFB	F	0	4	1	27	0	0	0	0	0	22	1	22	5	↓
VA	Ft Belvoir	J	142	659	0	0	0	0	0	5	43	566	185	598	31	↓
VA	Ft Lee	A	18	73	0	0	0	0	0	5	4	97	22	136	16	↓
VA	JB Langley-Eustis	J	55	155	8	46	0	3	0	1	14	143	77	213	36	↑
VA	JB Little Creek-Ft Story	J	0	2	1	1	0	0	0	0	0	0	1	2	50	↓
VA	JB Myer-Henderson Hall	A	5	28	0	0	0	0	0	1	1	23	6	26	23	↓
VA	MCB Quantico	N	11	82	0	0	0	0	0	1	15	108	26	115	23	↑
VA	NAS Oceana	N	4	11	0	0	0	0	0	0	0	12	4	15	27	↑
VA	NB Dam Neck	N	0	3	0	0	0	0	0	0	0	1	0	1	0	↔
VA	NS Norfolk	N	7	20	0	0	0	0	0	0	2	11	9	29	31	↓
VA	NWS Dahlgren	N	0	0	0	0	0	0	0	0	0	0	0	5	0	↔
VA	NWS Yorktown	N	0	3	0	0	0	0	0	0	0	3	0	7	0	↔
VA	Portsmouth	N	42	101	20	118	1	5	0	0	1	158	64	185	35	↓
VA	TPC Suffolk	N	2	3	0	0	0	0	0	0	0	2	2	7	29	↓
WY	FE Warren AFB	F	13	37	1	4	0	0	0	0	6	38	20	69	29	↓

Disclaimer: Due to the transition to MHS GENESIS, data are not available from NH Oak Harbor, NH Bremerton, AFMS Fairchild, Madigan AMC, Travis AFB, Presidio of Monterey AB, NAS Lemoore, or Mountain Home AFB. Therefore, these sites are not included in this report.

Surveillance Programs and Data Sources

Defense Health Agency / Armed Forces Health Surveillance Branch (AFHSB):

The Armed Forces Health Surveillance Branch (AFHSB) is the central epidemiologic resource for the U.S. Armed Forces, conducting medical surveillance to protect those who serve our nation in uniform and allies who are critical to our national security interests. The Epidemiology and Analysis Section of AFHSB, the Epi Data Center of the Navy and Marine Corps Public Health Center, and the Air Force Satellite Office in Dayton, Ohio (Wright-Patterson AFB) have compiled data for this report from the following sources below.

Influenza-like Illness Activity:

Medical encounter and demographic data from the AFHSB's Defense Medical Surveillance System (DMSS) are used to generate portions of this report. ICD-10 codes from outpatient encounters are used to identify influenza-like illness (ILI). ILI is defined using the following codes: B97.89, H66.9, H66.90, H66.91, H66.92, H66.93, J00, J01.9, J01.90, J06.9, J09, J09.X, J09.X1, J09.X2, J09.X3, J09.X9, J10, J10.0, J10.00, J10.01, J10.08, J10.1, J10.2, J10.8, J10.81, J10.82, J10.83, J10.89, J11, J11.0, J11.00, J11.08, J11.1, J11.2, J11.8, J11.81, J11.82, J11.83, J11.89, J12.89, J12.9, J18, J18.1, J18.8, J18.9, J20.9, J40, R05, R50.9.

The percentage of all outpatient visits that have an ILI code is calculated each week for all service members, regardless of component. These data are presented weekly for the current season and compared to the four prior seasons among service members. Influenza activity levels are calculated by comparing the mean reported percent of visits due to ILI for the previous two weeks to the mean reported percent of visits due to ILI during baseline weeks (defined as non-influenza weeks (weeks 22-39) over the past 3 years). There are four influenza activity levels, minimal, low, moderate, and high. The activity level corresponds to the number of standard deviations (SD) below, at or above the mean for the current 2 week period compared to the mean of the baseline weeks. Minimal activity corresponds to an influenza percentage that is less than 2 SD above the mean. Low activity corresponds to an influenza percentage that is equal to or greater than 2 SD above the mean, but less than 4 SD above the mean. Moderate activity corresponds to an influenza percentage that is equal to or greater than 4 SD above the mean, but less than 6 SD above the mean. High activity corresponds to an influenza percentage that is equal to or greater than 6 SD above the mean.

Influenza activity levels are presented in the Combatant Command (CCMD) maps, either by Installation, state, or country.

Influenza Positive Specimens:

Influenza lab results (HL-7 formatted data) are compiled and transmitted from the Navy and Marine Corps Public Health Center to AFHSB. Results obtained via PCR, viral culture, and rapid influenza assays are reported. Although the inclusion of rapid tests may underestimate the weekly and cumulative percent positive estimates due to false negatives, visibility of the positive rapid results provides valuable information for this surveillance report. Influenza types/subtypes are categorized as influenza A/not subtyped, influenza A(H1N1), influenza A(H3N2), influenza A and B co-infection, and influenza B. Additionally, laboratory-confirmed positive results are used to identify influenza-related hospitalization cases across the DoD.

The percent positivity is calculated by dividing the number of influenza positive specimens by the total number of specimens (positive and negative only; inconclusive results are excluded). The distributions of percent positive specimens by subtype are presented on a weekly basis for the entire influenza season. For each CCMD state, the distribution of subtypes for the previous 2 weeks are presented as pie graphs for states and countries. For installations, data are presented in tables with counts and percent positive by subtype for the past 2 weeks and for the entire season. The "change from last report" column reports the absolute difference in the percent positive from the prior week's report to the current week's report.

Surveillance Programs and Data Sources

Pharmacy Transactions for Dispensed Antiviral Prescriptions:

HL7-formatted pharmacy transactions are used to assess the number of dispensed influenza antiviral (AV) prescriptions. Four influenza AV medications approved by the Food and Drug Administration (FDA) are recommended by the CDC for use in the United States (US) for the 2019-2020 influenza season: oral oseltamivir (Tamiflu® or generic), inhaled zanamivir (Relenza®), and intravenous peramivir (Rapivab®), and baloxavir marboxil (Xofluza®). These prescriptions are included in this surveillance. The overall count of dispensed AV prescriptions by week is presented graphically for the influenza season. A seasonal baseline is displayed with dispensed AV prescriptions. Surveillance thresholds are displayed with the count of inpatient dispensed AV prescriptions. Additionally, counts of inpatient dispensed influenza AV prescriptions are presented weekly for the influenza season.

Baselines, Thresholds, and Trends:

Weekly baselines used a three-year average to compare results with those from the same week during the previous three seasons. Bands for one and two standard deviations above seasonal baseline estimates are displayed to indicate when trends diverge with respect to timing or volume from those of recent seasons. The ILI, lab, and dispensed AV prescription data thresholds are calculated by adding two standard deviations to the off-season average.

Inpatient thresholds (lab and dispensed AV prescription data) are calculated by adding one standard deviation to the overall weighted average for in-season weeks. Weeks that represent at least 2% of the total season's laboratory-positive influenza cases for at least two consecutive weeks was considered to be "in-season" or influenza weeks; all other weeks are considered to be "off-season" or non-influenza weeks.

Links to Service-Specific Influenza Reports:

Select the following links to see service-specific influenza surveillance weekly reports:

- Navy and Marine Corps Public Health Center (NMCPHC):
<https://www.med.navy.mil/sites/nmcphc/epi-data-center/influenza/Pages/default.aspx>
- United States Air Force School of Aerospace Medicine (USAFSAM)/Defense Health Agency (DHA):
<https://hpws.afrl.af.mil/epi-consult/influenza/ActivityUpdates.cfm>