

DoD Consolidated Influenza Surveillance Report

Week 18 (26 April 2020 — 02 May 2020)



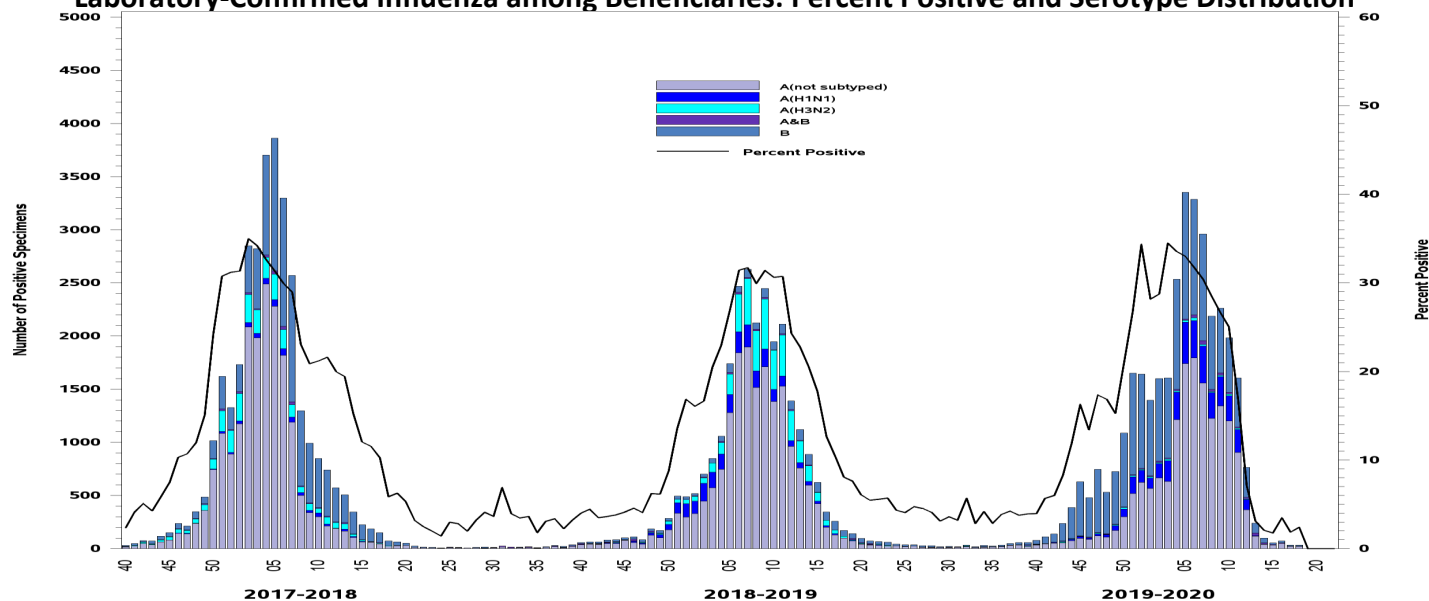
One Page Summary: Weekly Highlights

- Among all beneficiaries, laboratory-confirmed influenza cases, dispensed antiviral prescription counts, and inpatient counts remained stable. All had low activity levels.
- Among active component Service Members, laboratory-confirmed influenza cases and antiviral prescriptions remained low and stable.
- ILI activity continued to decrease and was minimal. One installation, Ft. Bliss, had high activity. However, the COVID-19 outbreak occurring across the world may affect healthcare seeking behavior which in turn will impact ILI activity levels.
- There was one laboratory-confirmed influenza hospitalization reported for week 18 (Season total: 229).

Influenza Surveillance Indicators (2019-2020 season)

All Beneficiaries	Total Per Week		Trend	Activity Level
Laboratory Cases	34		▼	Low
Dispensed Antivirals	22		◀▶	Low
Severity				Activity Level
Inpatient Laboratory Cases	1		◀▶	Low
Inpatient Dispensed Antivirals	1		◀▶	Low
Active Component				Activity Level
Laboratory Cases	16		▼	Low
Dispensed Antivirals	6		◀▶	Low
ILI Outpatient Visits	1%		◀▶	Minimal

Laboratory-Confirmed Influenza among Beneficiaries: Percent Positive and Serotype Distribution

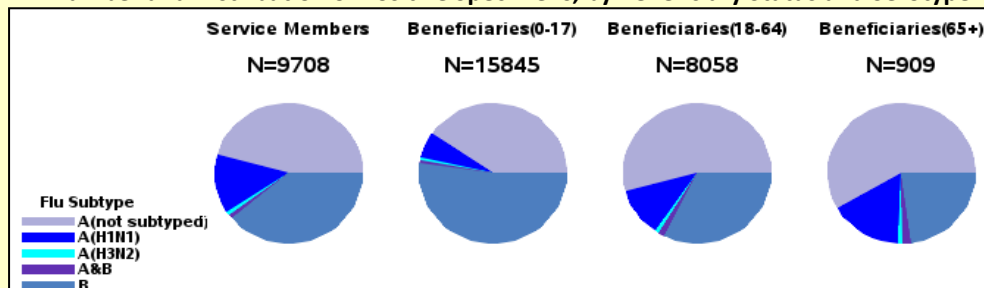


Disclaimer: Due to the transition to MHS GENESIS, data are not available from NH Oak Harbor, NH Bremerton, AFMS Fairchild, Madigan AMC, Travis AFB, Presidio of Monterey AB, NAS Lemoore, or Mountain Home AFB. Therefore, these sites are not included in this report.

Laboratory-Confirmed Influenza (2019-2020 Season: Week 18)

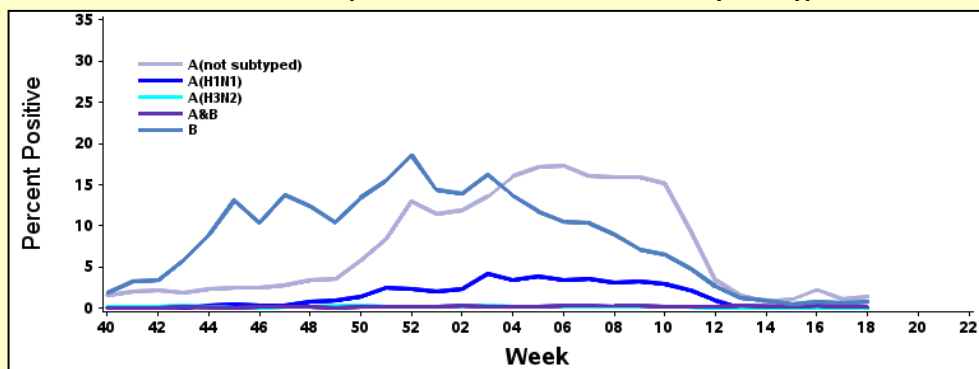
- Children continued to have the highest number of laboratory-confirmed influenza positive specimens at 15,845; Service Members continued to have the second highest count at 9,708.

Number and Distribution of Positive Specimens, by Beneficiary Status and Serotype



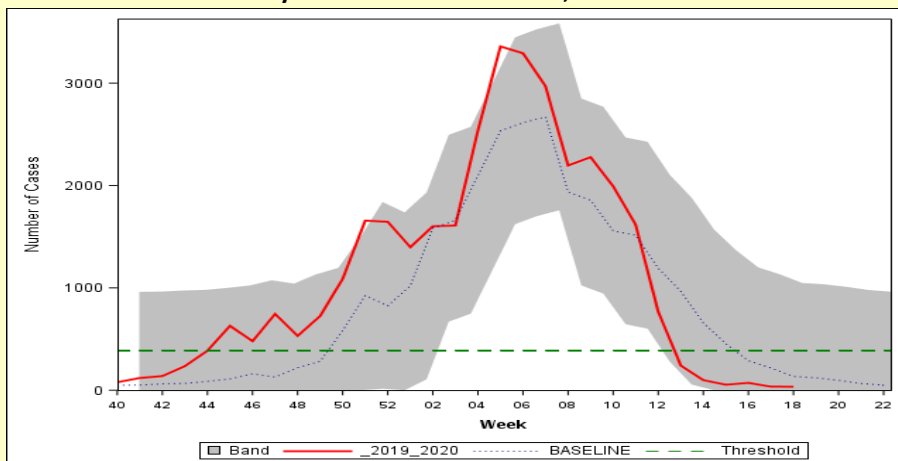
- The percent of specimens positive for influenza remained stable and very low. Influenza B predominated in 2019 and influenza A predominated during 2020 of the season.

Percent of Specimens Positive for Influenza by Serotype



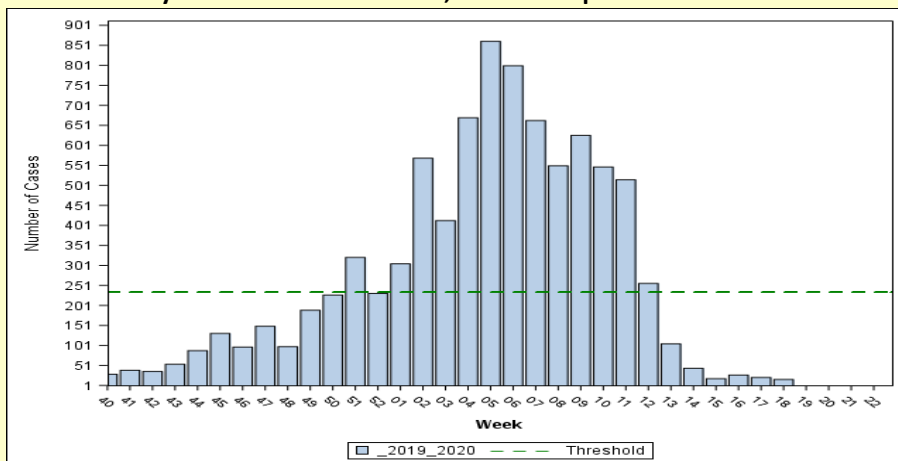
- The number of laboratory-confirmed cases among all beneficiaries remained low and stable and below the weekly baseline and threshold.
- Band indicates one standard deviation above and below seasonal baseline estimates. Threshold indicates two standard deviations above off-season average.

Laboratory-Positive Influenza Cases, All Beneficiaries



- The number of active component Service Member laboratory-confirmed cases remained low and stable and well below the threshold.
- Threshold indicates two standard deviations above seasonal baseline estimates.

Laboratory-Positive Influenza Cases, Active Component Service Members

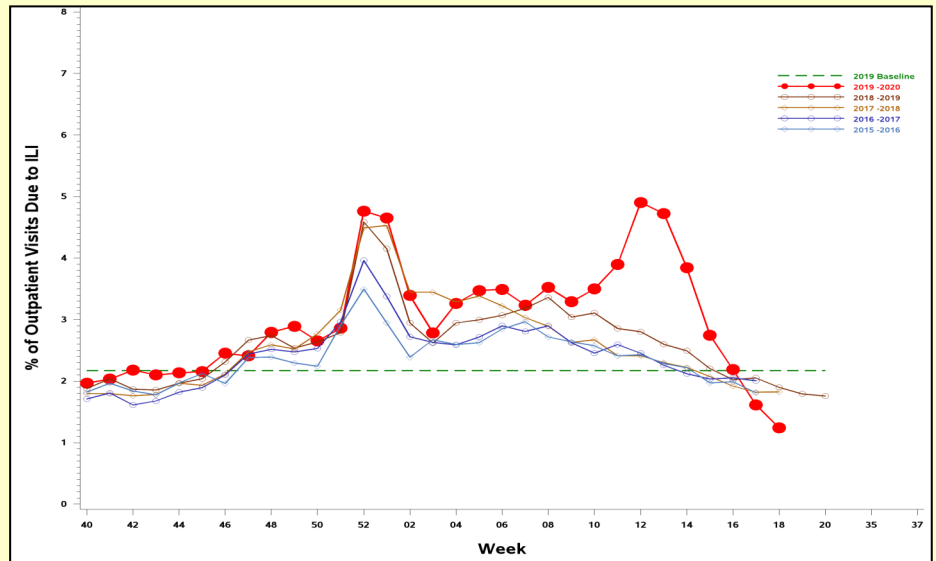


Disclaimer: Due to the transition to MHS GENESIS, data are not available from NH Oak Harbor, NH Bremerton, AFMS Fairchild, Madigan AMC, Travis AFB, Presidio of Monterey AB, NAS Lemoore, or Mountain Home AFB. Therefore, these sites are not included in this report.

ILI and Dispensed Antiviral Prescriptions (2019-2020 Season: Week 18)

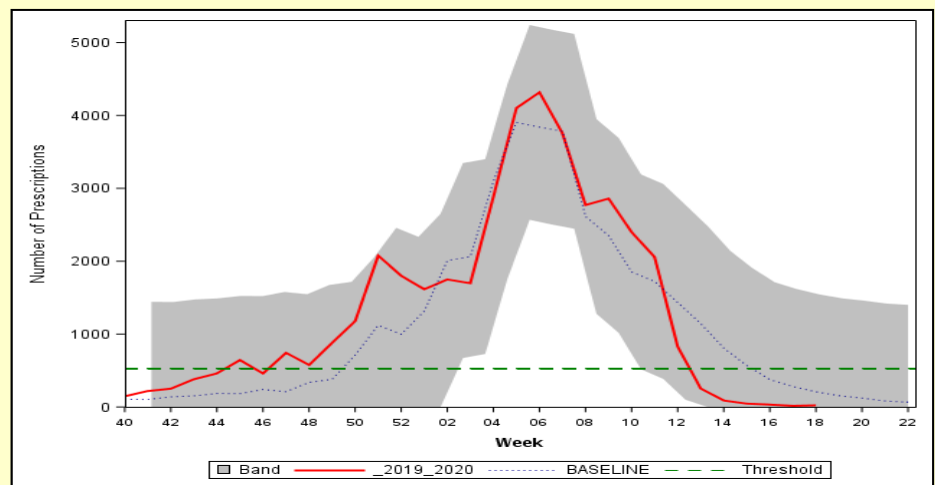
- The percentage of outpatient visits due to ILI continued to decrease and remained far below baseline and prior seasons.
- The percentage of outpatient visits due to ILI continued to be impacted by changes in healthcare seeking behavior due to COVID-19 outbreak.

Percent of Outpatient Visits Due to ILI:
Service Members, 2015-2016 to 2019-2020 Seasons



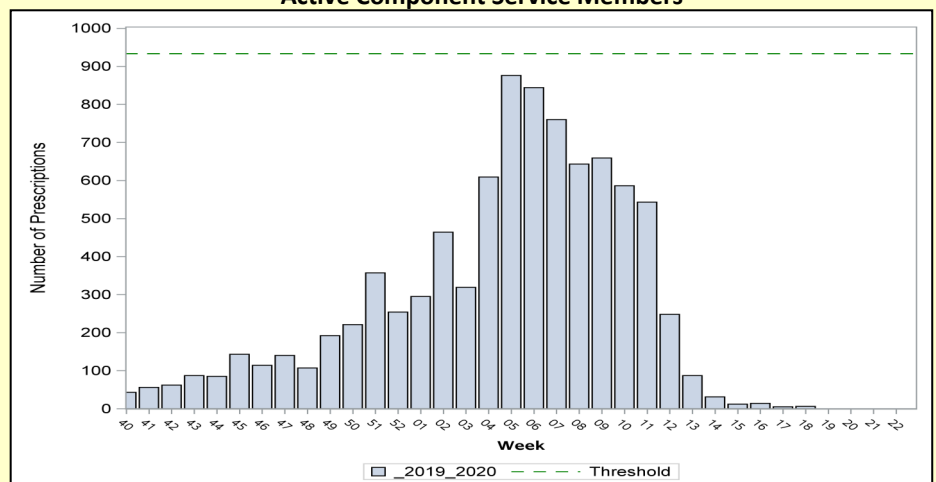
- Dispensed antiviral prescriptions among all beneficiaries remained low and stable below the weekly baseline and threshold.
- Band indicates one standard deviation above and below seasonal baseline estimates. Threshold indicates two standard deviations above off-season average.

Influenza-Specific Dispensed Antiviral Prescriptions, All Beneficiaries



Influenza-Specific Dispensed Antiviral Prescriptions:
Active Component Service Members

- The number of dispensed antiviral prescriptions among active component Service Members remained low and stable and well below the threshold.
- Threshold indicates two standard deviation above the overall weighted average during the season.

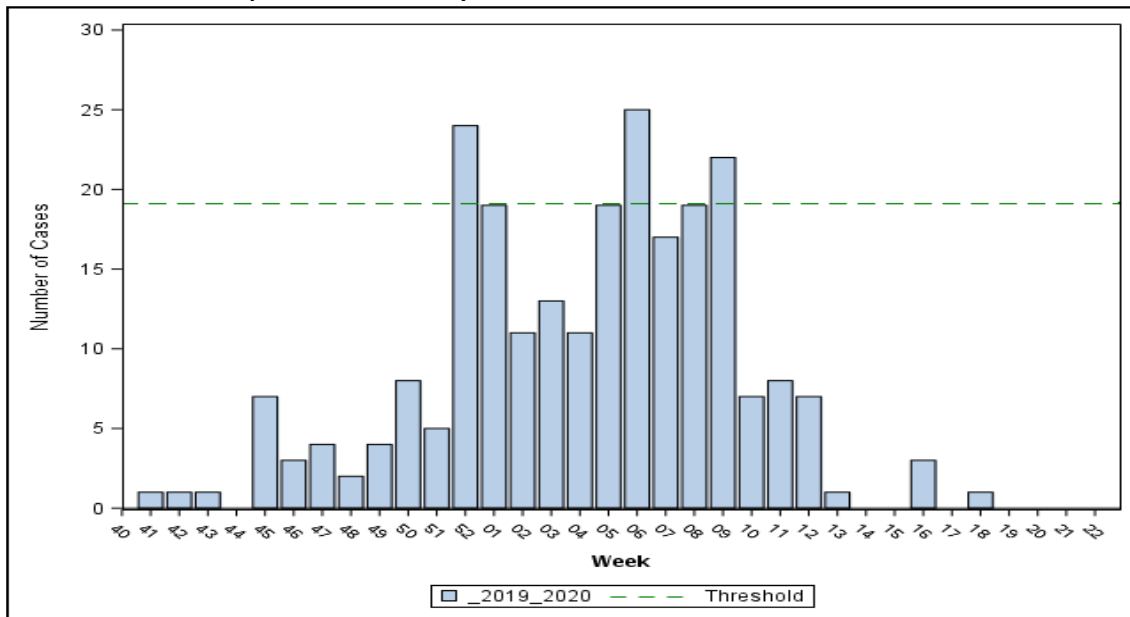


Disclaimer: Due to the transition to MHS GENESIS, data are not available from NH Oak Harbor, NH Bremerton, AFMS Fairchild, Madigan AMC, Travis AFB, Presidio of Monterey AB, NAS Lemoore, or Mountain Home AFB. Therefore, these sites are not included in this report.

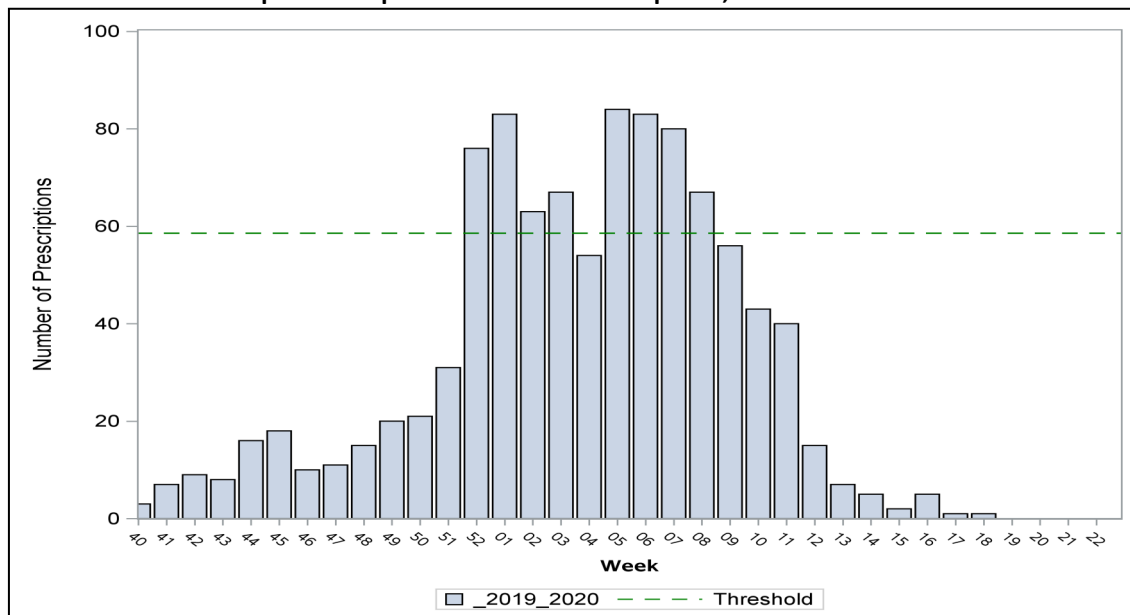
Severity: Hospitalized Influenza Metrics (2019-2020 Season: Week 18)

- There was one new laboratory-confirmed influenza hospitalization (influenza A/H1 among an other beneficiary) during week 18.
- There have been 229 laboratory-confirmed influenza hospitalizations this season (27 Service Members / 202 BN).
- The number of inpatient dispensed antiviral prescriptions remained low and stable and well below the threshold.
- Thresholds indicates one standard deviation above the overall weighted average during the season.

Hospitalized Laboratory-Positive Influenza Cases, All Beneficiaries



Inpatient Dispensed Antivirals Prescriptions, All Beneficiaries



Disclaimer: Due to the transition to MHS GENESIS, data are not available from NH Oak Harbor, NH Bremerton, AFMS Fairchild, Madigan AMC, Travis AFB, Presidio of Monterey AB, NAS Lemoore, or Mountain Home AFB. Therefore, these sites are not included in this report.

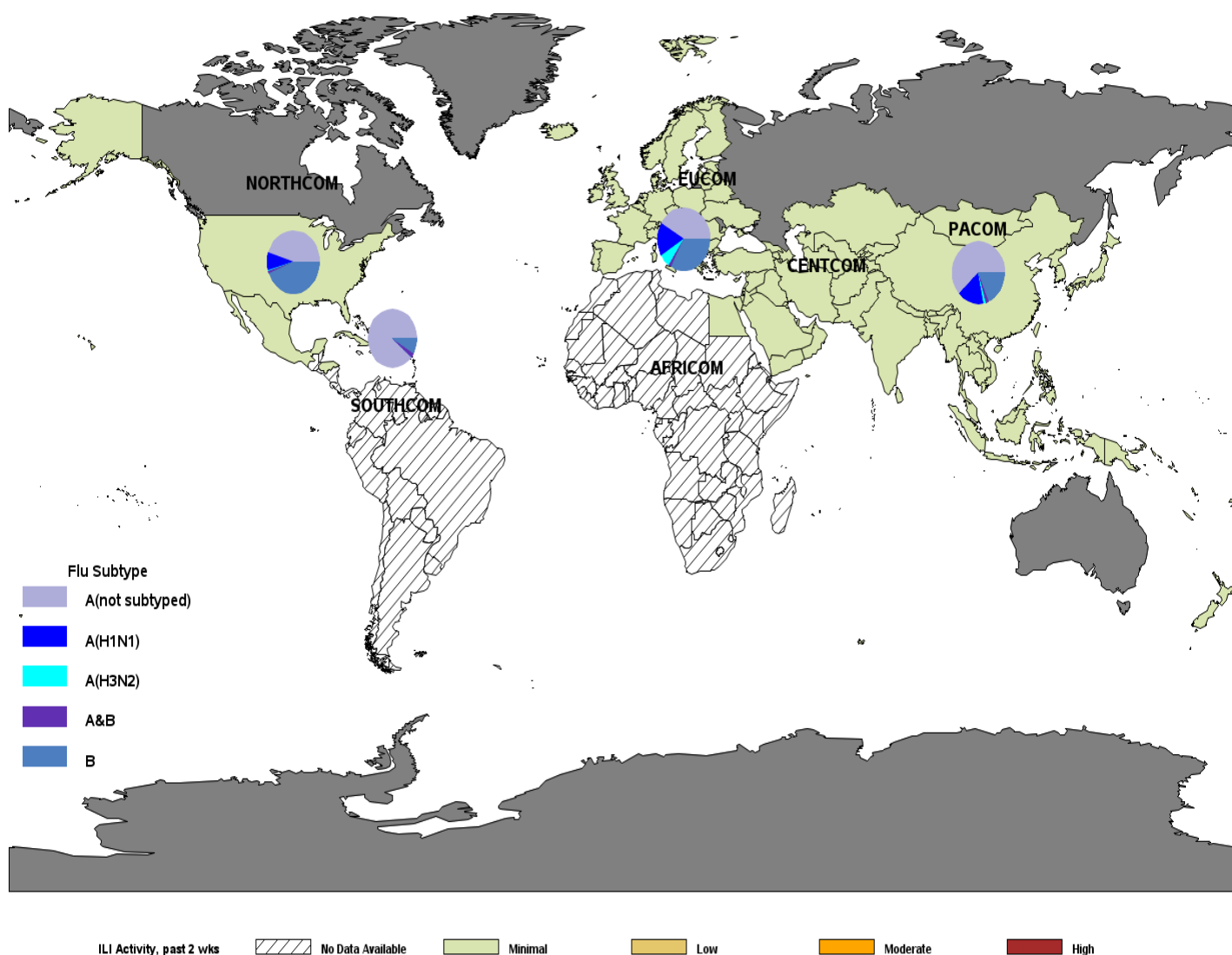
Influenza Activity: Geographic Combatant Command

(2019-2020 Season: Week 18)

**** The COVID-19 outbreak occurring across the world may affect healthcare seeking behavior which in turn will impact ILI activity levels.**

- NORTHCOM: ILI activity remained minimal. Influenza B predominated during the first half of the season and then Influenza A became the predominating strain for the remainder of the season, specifically A(H1N1).
- EUCOM: ILI activity remained minimal. Among positive influenza specimens, the majority have been influenza A this season.
- INDOPACOM: ILI activity remained minimal. The majority of positive influenza specimens have been influenza A this season. Among subtyped influenza A specimens, the majority were A(H1N1).
- SOUTHCOM: ILI activity remained minimal. The majority of influenza specimens have been influenza A this season.
- CENTCOM: ILI activity remained minimal.

ILI Activity (Service Members) and Laboratory-Confirmed Influenza (All Beneficiaries)



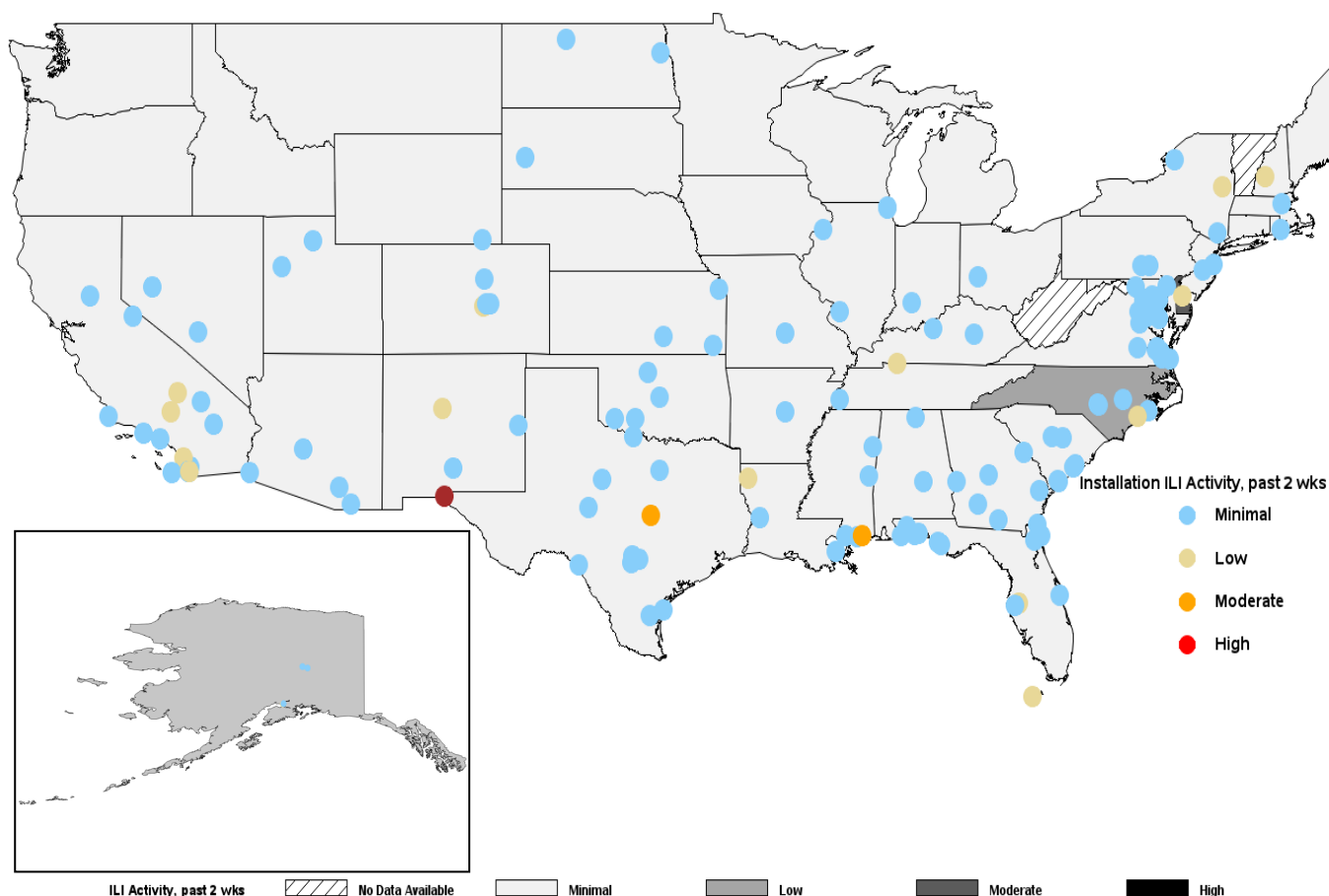
*Locations colored in dark gray have no Service Member medical encounter data.

Influenza Activity: NORTHCOM (2019-2020 Season: Week 18)

**** The COVID-19 outbreak occurring across the world may affect healthcare seeking behavior which in turn will impact ILI activity levels.**

- The majority of installations had minimal ILI activity. However, 4 installations had moderate ILI activity and 1 installation (Ft. Bliss) had high ILI activity.
- All states had minimal ILI activity, except for North Carolina and Alaska.
- State level data includes both Military Treatment Facility (MTF) and outsourced care. Therefore, state activity levels may differ from the installation level data.
- Installation-level laboratory data can be found on pages 11-13 of the report.

ILI Activity (Service Members) by State and Installation



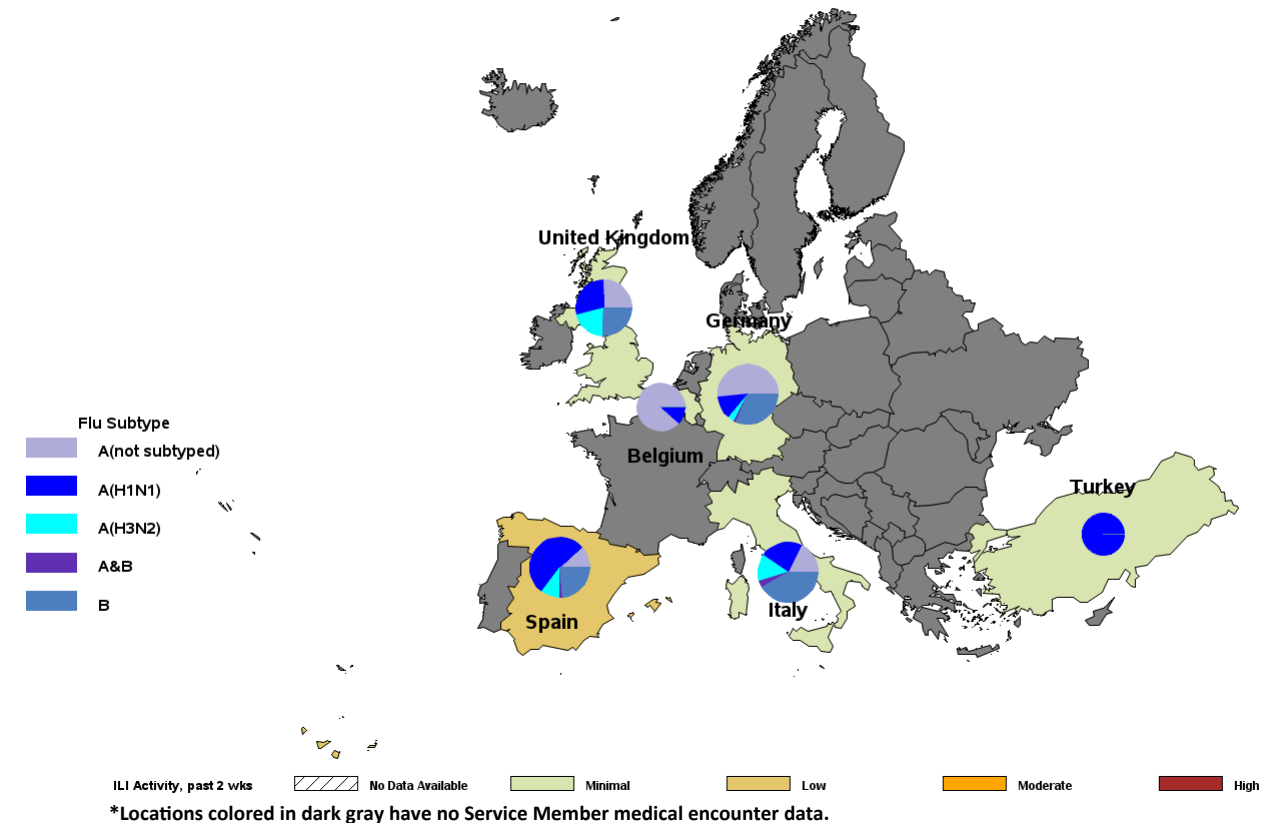
Disclaimer: Due to the transition to MHS GENESIS, data are not available from NH Oak Harbor, NH Bremerton, AFMS Fairchild, Madigan AMC, Travis AFB, Presidio of Monterey AB, NAS Lemoore, or Mountain Home AFB. Therefore, these sites are not included in this report.

Influenza Activity: EUCOM (2019-2020 Season: Week 18)

**** The COVID-19 outbreak occurring across the world may affect healthcare seeking behavior which in turn will impact ILI activity levels.**

- ILI activity remained low in Spain and minimal in all other countries with available data.

ILI Activity (Service Members) and Laboratory-Confirmed Influenza (All Beneficiaries)



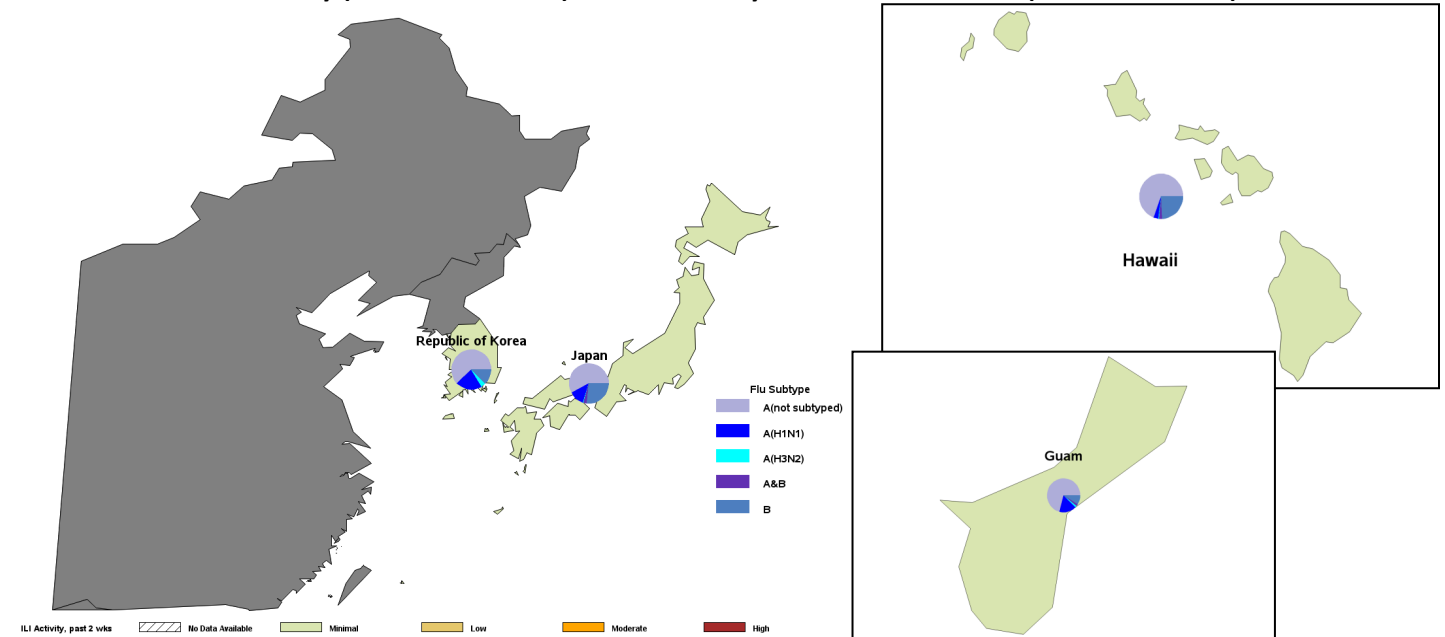
Country	Location	Service	A (not sub-typed)		A (H1N1)		A (H3N2)		A & B		B		Total positive		Total tested		% Positive		Change from last report
			2 wks	Season	2 wks	Season	2 wks	Season	2 wks	Season	2 wks	Season	2 wks	Season	2 wks	Season	2 wks	Season	
Belgium	Shape	A	0	15	0	2	0	0	0	0	0	0	0	0	0	0	0	0	↔
Germany	Barton Barracks	A	0	0	0	0	0	0	0	0	0	0	0	0	0	0	0	0	↔
Germany	Landstuhl RMC	A	0	258	0	32	0	6	0	7	0	106	0	31	0	0	0	0	↔
Germany	Patch Barracks	A	0	1	0	0	0	0	0	0	0	1	0	0	0	0	0	0	↔
Germany	Ramstein AB	F	0	36	0	17	0	0	0	2	0	9	0	1	0	0	0	0	↔
Germany	Spangdahlem AB	F	0	2	0	10	0	2	0	0	0	2	0	4	0	0	0	0	↔
Germany	USAG Bavaria	A	0	53	0	45	0	23	0	1	0	102	0	17	0	0	0	0	↔
Germany	USAG Hohenfels/Amberg	A	0	39	0	0	0	0	0	0	0	24	0	0	0	0	0	0	↔
Germany	USAG Kaiserslautern	A	0	21	0	0	0	0	0	0	0	8	0	3	0	0	0	0	↔
Germany	USAG Katterbach	A	0	21	0	0	0	0	0	0	0	24	0	3	0	0	0	0	↔
Germany	USAG Wiesbaden	A	0	23	0	4	0	0	0	0	0	0	0	2	0	0	0	0	↔
Italy	Aviano AB	F	0	8	0	23	0	19	0	4	0	19	0	3	0	0	0	0	↔
Italy	NAS Sigonella	N	0	7	0	8	0	1	0	1	0	4	0	7	0	0	0	0	↔
Italy	NSA Naples	N	0	17	0	16	0	14	0	5	0	61	0	2	0	0	0	0	↔
Italy	USAG Italy	A	0	22	0	23	0	10	0	0	0	44	0	27	0	0	0	0	↔
Spain	NS Rota	N	0	8	0	36	0	7	0	1	1	16	1	10	10	0	0	0	↑
Turkey	Incirlık AB	F	0	0	0	2	0	0	0	0	0	0	0	0	0	0	0	0	↔
United Kingdom	RAF Alconbury	F	0	0	0	0	0	0	0	0	0	0	0	0	0	0	0	0	↔
United Kingdom	RAF Croughton	F	0	1	0	0	0	1	0	0	0	2	0	0	0	0	0	0	↔
United Kingdom	RAF Lakenheath	F	0	9	0	11	0	7	0	0	0	8	0	3	0	0	0	0	↔

Influenza Activity: INDOPACOM (2019-2020 Season: Week 18)

**** The COVID-19 outbreak occurring across the world may affect healthcare seeking behavior which in turn will impact ILI activity levels.**

- ILI activity decreased to minimal in Guam, Hawaii, and Japan . ILI activity remained minimal in the Republic of Korea.
- The majority of positive influenza specimens for the season were influenza A. Among subtyped specimens, the majority have been influenza A(H1N1) for the season.

ILI Activity (Service Members) and Laboratory-Confirmed Influenza (All Beneficiaries)



*Locations colored in dark gray have no Service Member medical encounter data.

Country	Location	Service	A (not sub-typed)		A (H1N1)		A (H3N2)		A & B		B		Total positive	Total tested	% Positive	Change from last report
			2 wks	Season	2 wks	Season	2 wks	Season	2 wks	Season	2 wks	Season	2 wks	2 wks	2 wks	
Guam	JB Andersen	J	0	105	0	25	0	2	0	3	0	13	0	70	0	↔
Japan	CFA Okinawa	N	0	21	0	0	0	0	0	0	0	19	0	25	0	↔
Japan	CFA Yokosuka	N	0	59	0	0	0	0	0	3	0	6	0	48	0	↔
Japan	Camp Foster	N	0	5	0	0	0	0	0	0	0	0	0	4	0	↔
Japan	Camp Fuji	N	0	0	0	0	0	0	0	0	0	0	0	0	0	↔
Japan	Camp Zama	A	0	18	0	0	0	0	0	5	0	12	0	0	0	↔
Japan	Kadena AB	F	0	3	0	9	0	1	0	0	0	5	0	4	0	↔
Japan	MCAS Futenma	N	0	5	0	0	0	0	0	0	0	1	0	1	0	↔
Japan	MCAS Iwakuni	N	0	25	0	0	0	0	0	1	0	3	0	7	0	↔
Japan	Misawa AB	F	0	20	0	0	0	0	0	1	0	43	0	9	0	↔
Japan	NAF Atsugi	N	0	8	0	0	0	0	0	0	0	6	0	11	0	↔
Japan	NB Okinawa	N	1	55	0	0	0	0	0	1	0	6	1	56	2	↓
Japan	USFA Sasebo	N	0	2	0	0	0	0	0	0	0	2	0	1	0	↔
Japan	Yokota AB	F	0	18	0	42	0	0	0	1	0	6	0	11	0	↔
Korea, Republic of	CFA Chinhae	N	0	0	0	0	0	0	0	0	0	0	0	0	0	↔
Korea, Republic of	Camp Casey	A	0	4	0	0	0	0	0	0	0	1	0	0	0	↔
Korea, Republic of	Camp Humphreys	A	0	62	0	0	0	0	0	0	0	3	0	14	0	↔
Korea, Republic of	Camp Walker	A	0	17	0	0	0	0	0	0	0	2	0	0	0	↔
Korea, Republic of	Kunsan AB	F	0	1	0	4	0	1	0	0	0	0	0	0	0	↔
Korea, Republic of	Osan AB	F	0	15	0	70	0	12	0	0	0	11	0	4	0	↔
Korea, Republic of	Yongsan Garrison	A	0	110	0	1	0	0	0	0	0	24	0	50	0	↔
United States	Camp H M Smith	N	0	0	0	0	0	0	0	0	0	0	0	0	0	↔
United States	Ft Shafter	A	0	263	0	24	0	5	2	13	0	81	2	43	5	↑
United States	JB Pearl Harbor-Hickam	J	0	99	0	1	0	0	0	2	1	43	1	34	3	↑
United States	MCB Hawaii	N	0	30	0	1	0	0	0	0	0	14	0	7	0	↔
United States	Schofield Barracks	A	0	114	0	0	0	0	0	1	0	37	0	29	0	↔

Influenza Activity: SOUTHCOM (2019-2020 Season: Week 18)

**** The COVID-19 outbreak occurring across the world may affect healthcare seeking behavior which in turn will impact ILI activity levels.**

- ILI activity remained minimal in Cuba and Honduras.
- The majority of influenza positive specimens for the season have been Influenza A.

ILI Activity (Service Members) and Laboratory-Confirmed Influenza (All Beneficiaries)



ILI Activity, past 2 wks

No Data Available	Minimal	Low	Moderate	High
-------------------	---------	-----	----------	------

*Locations colored in dark gray have no Service Member medical encounter data.

Country	Location	Service	A (not sub-typed)		A (H1N1)		A (H3N2)		A & B		B		Total positive	Total tested	% Positive	Change from last report
			2 wks	Season	2 wks	Season	2 wks	Season	2 wks	Season	2 wks	Season	2 wks	2 wks	2 wks	
Cuba	Guantanamo Bay	N	0	33	0	0	0	0	0	1	0	3	0	2	0	↔

Influenza Activity: CENTCOM (2019-2020 Season: Week 18)

**** The COVID-19 outbreak occurring across the world may affect healthcare seeking behavior which in turn will impact ILI activity levels.**

- ILI activity increased to high in the United Arab Emirates.
- ILI activity remained minimal in all other countries with available data.

ILI Activity (Service Members)



*Locations colored in dark gray have no Service Member medical encounter data.

NORTHCOM Laboratory-Confirmed Influenza

(2019-2020 Season: Week 18)

Laboratory-Confirmed Influenza (All Beneficiaries) by Installation Alaska through Georgia

State	Location	Service	A (not subtyped)		A (H1N1)		A (H3N2)		A & B		B		Total positive	Total tested	% Positive	Change from last report
			2 wks	Season	2 wks	Season	2 wks	Season	2 wks	Season	2 wks	Season	2 wks	2 wks	2 wks	
AK	Eielson AFB	F	0	0	0	0	0	0	0	0	0	16	0	3	0	↔
AK	Ft Greely	A	0	3	0	0	0	0	0	0	0	11	0	0	0	↔
AK	Ft Wainwright	A	0	122	0	20	0	0	0	0	0	188	0	15	0	↔
AK	JB Elmendorf-Richardson	J	0	99	0	20	0	3	0	0	0	173	0	13	0	↔
AL	Ft Rucker	A	0	72	0	0	0	0	2	0	0	66	0	4	0	↔
AL	Maxwell AFB	F	0	81	0	21	0	0	3	0	0	41	0	6	0	↔
AL	Redstone Arsenal	A	0	64	0	0	0	0	2	0	0	58	0	5	0	↔
AR	Little Rock AFB	F	0	6	0	67	0	0	1	0	0	47	0	19	0	↔
AZ	Davis-Monthan AFB	F	0	9	0	22	0	0	0	0	0	25	0	0	0	↔
AZ	Ft Huachuca	A	0	92	0	21	0	0	0	0	0	82	0	5	0	↔
AZ	Luke AFB	F	0	30	0	27	0	3	0	3	0	52	0	2	0	↔
AZ	MCAS Yuma	N	0	1	0	2	0	0	0	0	0	7	0	5	0	↔
CA	Beale AFB	F	0	38	0	1	0	0	0	0	0	24	0	1	0	↔
CA	Camp Pendleton	N	0	205	0	168	0	23	0	4	0	306	0	28	0	↔
CA	Edwards AFB	F	0	25	0	0	0	0	0	0	0	11	0	0	0	↔
CA	Ft Irwin	A	0	138	0	0	0	0	0	0	0	98	0	8	0	↔
CA	Los Angeles AFB	F	0	2	0	0	0	0	0	0	0	4	0	2	0	↔
CA	MBHC Eastlake	N	0	0	0	10	0	0	0	0	0	5	0	0	0	↔
CA	NAF El Centro	N	0	0	0	4	0	0	0	0	0	0	0	0	0	↔
CA	NB Coronado	N	0	0	0	7	0	0	0	0	0	5	0	7	0	↔
CA	NB San Diego	N	0	27	0	397	0	33	0	11	0	263	0	320	0	↔
CA	NV Ventura County	N	0	0	0	0	0	1	0	0	0	2	0	0	0	↔
CA	Twentynine Palms	N	0	123	0	1	0	0	0	0	0	178	0	13	0	↔
CA	Vandenberg AFB	F	0	15	0	0	0	0	4	0	0	11	0	1	0	↔
CO	Buckley AFB	F	0	21	0	0	0	0	0	0	0	22	0	10	0	↔
CO	Ft Carson	A	1	519	0	2	0	0	18	3	515	4	188	2		↓
CO	Peterson AFB	F	0	12	0	63	0	2	0	1	0	48	0	3	0	↔
CO	Schriever AFB	F	0	2	0	13	0	3	0	0	0	9	0	0	0	↔
CO	USAF Academy	F	0	38	0	21	0	1	1	6	0	118	1	26	4	↑
CT	NSB New London	N	0	25	0	0	0	0	0	1	0	39	0	1	0	↔
DC	JB Anacostia-Bolling	F	0	4	0	2	0	0	0	0	0	7	0	0	0	↔
DC	JB Myer-Henderson Hall	A	0	0	0	0	0	0	0	0	0	0	0	0	0	↔
DC	Pentagon	J	0	49	0	0	0	0	0	0	0	10	0	0	0	↔
DC	Washington Navy Yard	N	0	4	0	0	0	0	0	0	0	9	0	0	0	↔
DE	Dover AFB	F	1	4	0	51	0	4	0	1	0	48	1	10	10	↑
FL	Eglin AFB	J	0	172	0	75	0	1	0	3	0	100	0	100	0	↔
FL	Hurlburt Field	F	0	31	0	0	0	0	1	0	0	14	0	0	0	↔
FL	Macdill AFB	F	0	153	0	3	0	2	0	1	1	127	1	25	4	↓
FL	NAS Jacksonville	J	0	382	0	2	0	0	0	6	0	223	0	11	0	↔
FL	NAS Key West	J	0	12	0	0	0	0	0	0	0	2	0	1	0	↔
FL	NAS Pensacola	N	0	252	0	0	0	0	0	2	0	234	0	36	0	↔
FL	NAS Whiting Field	N	0	14	0	0	0	0	0	0	0	12	0	0	0	↔
FL	NS Mayport	J	0	57	0	0	0	0	0	1	0	36	0	0	0	↔
FL	Patrick AFB	F	0	46	0	0	0	0	0	2	0	41	0	20	0	↔
FL	Tyndall AFB	F	1	7	0	0	0	0	0	1	0	9	1	3	33	↑
GA	Ft Benning	A	0	545	0	0	0	2	0	9	0	352	0	53	0	↔
GA	Ft Gordon	A	0	299	0	6	0	0	0	3	0	120	0	11	0	↔
GA	Ft Stewart	A	0	322	0	0	0	0	0	17	0	191	0	21	0	↔
GA	Hunter Army Airfield	A	0	38	0	0	0	0	0	6	0	44	0	8	0	↔
GA	Moody AFB	F	0	9	0	39	0	0	0	0	0	13	0	6	0	↔
GA	NAS Albany	J	0	15	0	0	0	0	0	0	0	15	0	0	0	↔
GA	NSB Kings Bay	J	0	44	0	0	0	0	0	1	0	18	0	2	0	↔
GA	Robins AFB	F	0	2	0	49	0	0	0	0	0	20	0	9	0	↔

Disclaimer: Due to the transition to MHS GENESIS, data are not available from NH Oak Harbor, NH Bremerton, AFMS Fairchild, Madigan AMC, Travis AFB, Presidio of Monterey AB, NAS Lemoore, or Mountain Home AFB. Therefore, these sites are not included in this report.

NORTHCOM Laboratory-Confirmed Influenza

(2019-2020 Season: Week 18)

Laboratory-Confirmed Influenza (All Beneficiaries) by Installation Illinois through New York

State	Location	Service	A (not subtyped)		A (H1N1)		A (H3N2)		A & B		B		Total positive	Total test- ed	% Positive	Change from last report
			2 wks	Season	2 wks	Season	2 wks	Season	2 wks	Season	2 wks	Season	2 wks	2 wks	2 wks	
IL	NS Great Lakes	N	0	390	0	14	0	1	0	2	0	373	0	82	0	↔
IL	Scott AFB	F	0	13	0	69	0	0	0	2	0	73	0	23	0	↔
KS	Ft Leavenworth	A	1	106	0	0	0	0	0	0	0	88	1	9	11	↑
KS	Ft Riley	A	0	247	0	5	0	0	0	2	0	452	0	37	0	↔
KS	Mcconnell AFB	F	0	2	0	12	0	0	0	0	0	9	0	1	0	↔
KY	Ft Campbell	A	0	434	0	5	0	0	0	3	0	351	0	25	0	↔
KY	Ft Knox	A	0	25	0	0	0	0	0	0	0	11	0	0	0	↔
LA	Barksdale AFB	F	0	46	0	0	0	0	0	0	0	14	0	2	0	↔
LA	Ft Polk	A	0	254	0	0	0	0	0	2	0	168	0	29	0	↔
LA	NAS Belle Chase	N	0	9	0	0	0	0	0	0	0	4	0	1	0	↔
MA	Hanscom AFB	F	0	4	0	13	0	1	0	2	0	18	0	21	0	↔
MD	Aberdeen Proving Ground	A	0	32	0	0	0	0	0	0	0	31	0	17	0	↔
MD	Ft Detrick	A	0	37	0	0	0	0	0	0	0	54	0	0	0	↔
MD	Ft Meade	A	0	39	0	0	0	0	0	0	0	39	0	13	0	↔
MD	JB Andrews	F	0	228	0	2	0	1	0	14	1	202	1	62	2	↓
MD	NAS Patuxent River	N	0	69	0	0	0	0	0	3	2	58	2	7	29	↓
MD	NBHC Bancroft Hall	N	1	102	0	4	0	0	0	4	0	45	1	4	25	↓
MD	NHC Annapolis	N	0	89	0	0	0	0	0	2	0	24	0	17	0	↔
MD	NSF Indian Head	N	0	8	0	0	0	0	0	0	0	11	0	7	0	↔
MD	WRNMMC	J	0	463	0	33	0	1	0	2	0	376	0	79	0	↔
MO	Ft Leonard Wood	A	0	250	0	12	0	2	0	2	0	354	0	11	0	↔
MO	Whiteman AFB	F	0	48	0	0	0	0	0	0	0	40	0	23	0	↔
MS	Columbus AFB	F	0	6	0	0	0	0	0	0	0	9	0	1	0	↔
MS	Keesler AFB	J	0	239	0	3	0	0	0	0	0	184	0	38	0	↔
MS	NAS Meridian	N	0	21	0	0	0	0	0	0	0	10	0	0	0	↔
MS	NBHC Gulfport	N	0	25	0	0	0	0	0	0	0	32	0	9	0	↔
MT	Malmstrom AFB	F	0	6	0	14	0	0	0	1	0	8	0	2	0	↔
NC	Camp Lejeune	N	32	845	0	12	0	1	0	4	2	265	34	161	21	↔
NC	Ft Bragg	J	0	16	0	2	0	0	0	6	0	12	0	88	0	↔
NC	MCAS Cherry Point	N	1	66	0	0	0	0	0	3	79	4	25	16	↓	
NC	Pope Army Airfield	J	0	0	0	0	0	0	0	6	0	0	0	1	0	↔
NC	Seymour Johnson AFB	J	0	7	0	32	0	3	0	1	1	25	1	29	3	↑
ND	Grand Forks AFB	F	0	2	0	0	0	0	0	0	0	9	0	4	0	↔
ND	Minot AFB	F	0	1	0	30	0	0	0	3	0	58	0	7	0	↔
NE	Offutt AFB	F	0	4	0	32	0	0	0	0	0	14	0	1	0	↔
NH	Portsmouth	N	0	18	0	0	0	0	0	0	0	16	0	1	0	↔
NJ	JB McGuire-Dix-Lakehurst	F	0	9	0	17	0	6	0	1	0	42	0	0	0	↔
NM	Cannon AFB	F	0	1	0	4	0	0	0	0	0	3	0	0	0	↔
NM	Holloman AFB	F	0	11	0	0	0	0	0	3	0	17	0	1	0	↔
NM	Kirtland AFB	F	0	8	0	13	0	2	0	0	0	19	0	21	0	↔
NM	White Sands Missile Range	A	0	11	0	0	0	0	0	0	0	4	0	2	0	↔
NV	Nellis AFB	F	0	227	0	47	0	5	0	0	0	204	0	10	0	↔
NY	Ft Drum	A	0	26	0	28	0	5	0	3	0	129	0	17	0	↔
NY	West Point	A	0	64	0	85	0	7	0	3	0	253	0	8	0	↔

Disclaimer: Due to the transition to MHS GENESIS, data are not available from NH Oak Harbor, NH Bremerton, AFMS Fairchild, Madigan AMC, Travis AFB, Presidio of Monterey AB, NAS Lemoore, or Mountain Home AFB. Therefore, these sites are not included in this report.

NORTHCOM Laboratory-Confirmed Influenza

(2019-2020 Season: Week 18)

Laboratory-Confirmed Influenza (All Beneficiaries) by Installation Ohio through Wyoming

State	Location	Service	A (not subtyped)		A (H1N1)		A (H3N2)		A & B		B		Total positive	Total tested	% Positive	Change from last report
			2 wks	Season	2 wks	Season	2 wks	Season	2 wks	Season	2 wks	Season	2 wks	2 wks	2 wks	
OH	Wright-Patterson AFB	F	0	17	0	310	0	5	0	6	0	279	0	56	0	↔
OK	Altus AFB	F	0	7	0	37	0	0	0	0	0	50	0	1	0	↔
OK	Ft Sill	A	0	278	0	2	0	0	1	4	0	221	1	86	1	↓
OK	Tinker AFB	F	0	5	0	86	0	1	0	1	0	54	0	27	0	↔
OK	Vance AFB	F	0	19	0	8	0	0	0	1	0	8	0	1	0	↔
PA	Carlisle Barracks	A	0	19	0	0	0	0	0	0	1	37	1	14	7	↓
PR	Ft Buchanan	A	0	20	0	0	0	0	0	0	0	18	0	0	0	↔
PR	NS Roosevelt Roads	N	0	2	0	0	0	0	0	0	0	0	0	0	0	↔
RI	NHC New England	N	0	27	0	6	0	0	0	0	0	23	0	0	0	↔
SC	Ft Jackson	A	0	238	0	0	0	0	0	2	0	219	0	14	0	↔
SC	JB Charleston	J	0	79	0	20	0	0	0	3	1	74	1	27	4	↓
SC	MCAS Beaufort	N	0	25	0	11	0	1	0	0	3	33	3	27	11	↑
SC	Parris Island	N	0	53	0	1	0	0	0	4	0	90	0	11	0	↔
SC	Shaw AFB	F	0	11	0	68	0	3	0	1	0	64	0	6	0	↔
SD	Ellsworth AFB	F	0	19	0	36	0	0	0	2	0	49	0	10	0	↔
TN	Ft Campbell	A	0	109	0	2	0	1	0	0	0	87	0	2	0	↔
TN	NSA Mid-South	N	0	24	0	0	0	0	0	0	0	8	0	0	0	↔
TX	Dyess AFB	F	0	34	0	0	0	0	0	4	0	23	0	10	0	↔
TX	Ft Bliss	A	0	627	0	99	0	7	1	6	0	835	1	202	0	↓
TX	Ft Hood	A	0	882	0	36	0	0	0	7	0	1177	0	39	0	↔
TX	Goodfellow AFB	F	0	46	0	1	0	0	0	3	0	32	0	9	0	↔
TX	JB San Antonio	J	0	1360	1	281	0	12	0	25	0	1015	1	75	1	↑
TX	Laughlin AFB	F	0	11	0	2	0	0	0	3	0	18	0	5	0	↔
TX	NAS Corpus Christi	N	0	9	0	0	0	0	0	0	0	8	0	1	0	↔
TX	NAS JRB Fort Worth	N	0	1	0	0	0	0	0	0	0	1	0	0	0	↔
TX	NAS Kingsville	N	0	0	0	0	0	0	0	0	0	1	0	1	0	↔
TX	Sheppard AFB	F	0	44	0	65	0	0	0	1	0	40	0	19	0	↔
UT	Hill AFB	F	0	5	0	29	0	0	0	0	0	25	0	1	0	↔
VA	Ft Belvoir	J	0	730	0	4	0	0	0	8	0	588	0	63	0	↔
VA	Ft Lee	A	0	86	0	0	0	0	0	5	0	105	0	2	0	↔
VA	JB Langley-Eustis	J	1	184	0	61	0	3	0	2	2	166	3	22	14	↑
VA	JB Little Creek-Ft Story	J	0	2	0	1	0	0	0	0	0	0	0	3	0	↔
VA	JB Myer-Henderson Hall	A	0	31	0	0	0	0	0	1	0	25	0	2	0	↔
VA	MCB Quantico	N	0	97	0	0	0	0	0	1	0	125	0	4	0	↔
VA	NAS Oceana	N	0	11	0	0	0	0	0	0	0	12	0	0	0	↔
VA	NB Dam Neck	N	0	3	0	0	0	0	0	0	0	1	0	0	0	↔
VA	NBHC Chesapeake	N	0	0	0	0	0	0	0	0	0	0	0	0	0	↔
VA	NS Norfolk	N	0	23	0	0	0	0	0	0	0	12	0	0	0	↔
VA	NWS Dahlgren	N	0	0	0	0	0	0	0	0	0	0	0	1	0	↔
VA	NWS Yorktown	N	0	5	0	0	0	0	0	0	0	4	0	0	0	↔
VA	Portsmouth	N	0	119	0	138	0	5	0	2	0	165	0	9	0	↔
VA	TPC Suffolk	N	0	5	0	0	0	0	0	0	0	2	0	0	0	↔
WY	FE Warren AFB	F	0	39	0	4	0	0	0	2	0	43	0	2	0	↔

Disclaimer: Due to the transition to MHS GENESIS, data are not available from NH Oak Harbor, NH Bremerton, AFMS Fairchild, Madigan AMC, Travis AFB, Presidio of Monterey AB, NAS Lemoore, or Mountain Home AFB. Therefore, these sites are not included in this report.

Surveillance Programs and Data Sources

Defense Health Agency / Armed Forces Health Surveillance Branch (AFHSB):

The Armed Forces Health Surveillance Branch (AFHSB) is the central epidemiologic resource for the U.S. Armed Forces, conducting medical surveillance to protect those who serve our nation in uniform and allies who are critical to our national security interests. The Epidemiology and Analysis Section of AFHSB, the Epi Data Center of the Navy and Marine Corps Public Health Center, and the Air Force Satellite Office in Dayton, Ohio (Wright-Patterson AFB) have compiled data for this report from the following sources below.

Influenza-like Illness Activity:

Medical encounter and demographic data from the AFHSB's Defense Medical Surveillance System (DMSS) are used to generate portions of this report. ICD-10 codes from outpatient encounters are used to identify influenza-like illness (ILI). ILI is defined using the following codes: B97.89, H66.9, H66.90, H66.91, H66.92, H66.93, J00, J01.9, J01.90, J06.9, J09, J09.X, J09.X1, J09.X2, J09.X3, J09.X9, J10, J10.0, J10.00, J10.01, J10.08, J10.1, J10.2, J10.8, J10.81, J10.82, J10.83, J10.89, J11, J11.0, J11.00, J11.08, J11.1, J11.2, J11.8, J11.81, J11.82, J11.83, J11.89, J12.89, J12.9, J18, J18.1, J18.8, J18.9, J20.9, J40, R05, R50.9.

The percentage of all outpatient visits that have an ILI code is calculated each week for all service members, regardless of component. These data are presented weekly for the current season and compared to the four prior seasons among service members. Influenza activity levels are calculated by comparing the mean reported percent of visits due to ILI for the previous two weeks to the mean reported percent of visits due to ILI during baseline weeks (defined as non-influenza weeks (weeks 22-39) over the past 3 years). There are four influenza activity levels, minimal, low, moderate, and high. The activity level corresponds to the number of standard deviations (SD) below, at or above the mean for the current 2 week period compared to the mean of the baseline weeks. Minimal activity corresponds to an influenza percentage that is less than 2 SD above the mean. Low activity corresponds to an influenza percentage that is equal to or greater than 2 SD above the mean, but less than 4 SD above the mean. Moderate activity corresponds to an influenza percentage that is equal to or greater than 4 SD above the mean, but less than 6 SD above the mean. High activity corresponds to an influenza percentage that is equal to or greater than 6 SD above the mean.

Influenza activity levels are presented in the Combatant Command (CCMD) maps, either by Installation, state, or country.

Influenza Positive Specimens:

Influenza lab results (HL-7 formatted data) are compiled and transmitted from the Navy and Marine Corps Public Health Center to AFHSB. Results obtained via PCR, viral culture, and rapid influenza assays are reported. Although the inclusion of rapid tests may underestimate the weekly and cumulative percent positive estimates due to false negatives, visibility of the positive rapid results provides valuable information for this surveillance report. Influenza types/subtypes are categorized as influenza A/not subtyped, influenza A(H1N1), influenza A(H3N2), influenza A and B co-infection, and influenza B. Additionally, laboratory-confirmed positive results are used to identify influenza-related hospitalization cases across the DoD.

The percent positivity is calculated by dividing the number of influenza positive specimens by the total number of specimens (positive and negative only; inconclusive results are excluded). The distributions of percent positive specimens by subtype are presented on a weekly basis for the entire influenza season. For each CCMD state, the distribution of subtypes for the previous 2 weeks are presented as pie graphs for states and countries. For installations, data are presented in tables with counts and percent positive by subtype for the past 2 weeks and for the entire season. The "change from last report" column reports the absolute difference in the percent positive from the prior week's report to the current week's report.

Surveillance Programs and Data Sources

Pharmacy Transactions for Dispensed Antiviral Prescriptions:

HL7-formatted pharmacy transactions are used to assess the number of dispensed influenza antiviral (AV) prescriptions. Four influenza AV medications approved by the Food and Drug Administration (FDA) are recommended by the CDC for use in the United States (US) for the 2019-2020 influenza season: oral oseltamivir (Tamiflu® or generic), inhaled zanamivir (Relenza®), and intravenous peramivir (Rapivab®), and baloxavir marboxil (Xofluza®). These prescriptions are included in this surveillance. The overall count of dispensed AV prescriptions by week is presented graphically for the influenza season. A seasonal baseline is displayed with dispensed AV prescriptions. Surveillance thresholds are displayed with the count of inpatient dispensed AV prescriptions. Additionally, counts of inpatient dispensed influenza AV prescriptions are presented weekly for the influenza season.

Baselines, Thresholds, and Trends:

Weekly baselines used a three-year average to compare results with those from the same week during the previous three seasons. Bands for one and two standard deviations above seasonal baseline estimates are displayed to indicate when trends diverge with respect to timing or volume from those of recent seasons. The ILI, lab, and dispensed AV prescription data thresholds are calculated by adding two standard deviations to the off-season average.

Inpatient thresholds (lab and dispensed AV prescription data) are calculated by adding one standard deviation to the overall weighted average for in-season weeks. Weeks that represent at least 2% of the total season's laboratory-positive influenza cases for at least two consecutive weeks was considered to be "in-season" or influenza weeks; all other weeks are considered to be "off-season" or non-influenza weeks.

Links to Service-Specific Influenza Reports:

Select the following links to see service-specific influenza surveillance weekly reports:

- Navy and Marine Corps Public Health Center (NMCPHC):
<https://www.med.navy.mil/sites/nmcphc/epi-data-center/influenza/Pages/default.aspx>
- United States Air Force School of Aerospace Medicine (USAFSAM)/Defense Health Agency (DHA):
<https://hpws.af.mil/epi-consult/influenza/ActivityUpdates.cfm>