

DoD Consolidated Influenza Surveillance Report

Week 4 (21 January 2024 — 27 January 2024)



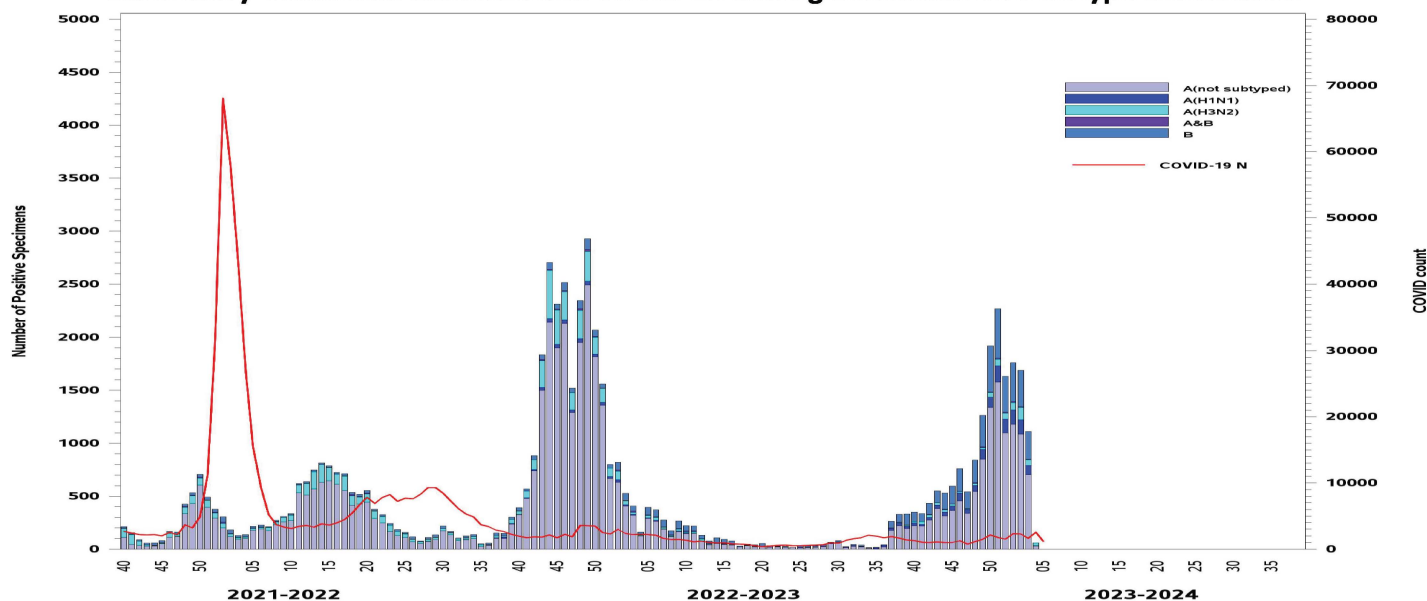
One Page Summary: Weekly Highlights

- Laboratory-confirmed influenza cases were low among all beneficiaries and service members during week 3 of the 2023-2024 influenza season. However, influenza hospitalizations were elevated.
- ILI activity ranged from minimal to high, depending on the installation and state.
- COVID-19 cases accounted for a majority of all influenza and COVID-19 cases combined for all populations except beneficiaries 0-17 year of age, for whom influenza has predominated.
- There were 22 new laboratory-confirmed influenza hospitalizations reported for week 03 (Season totals: 333; 37 service members and 296 other beneficiaries).

Influenza Surveillance Indicators (2023-2024 season)

All Beneficiaries	Total Per Week		Trend	Activity Level
Laboratory Cases	60		▼	Low
Severity				
Inpatient Laboratory Cases	22		▼	Elevated
Active Component				
Laboratory Cases	18		▼	Low
ILI Outpatient Visits	2%		◀▶	Low

Laboratory-Confirmed Influenza and COVID-19 among Beneficiaries: Serotype Distribution

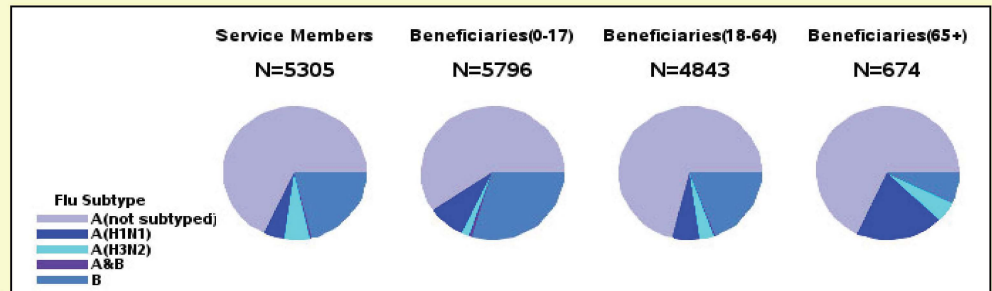


Confirmed Influenza and COVID-19 Cases (2023-2024 Season: Week 4)

*Reporting of laboratory data from MHS GENESIS is typically delayed by 2 weeks

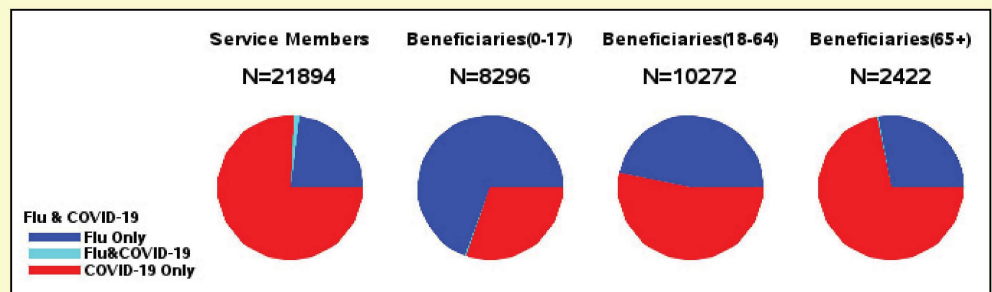
Number and Distribution of Influenza Positive Specimens since week 40, by Beneficiary Status and Serotype

- The number of laboratory-confirmed influenza positive specimens for the season to date was highest among children (5,796), followed closely by service members (5,305).
- Among subtyped specimens, influenza A (H1N1) has predominated.

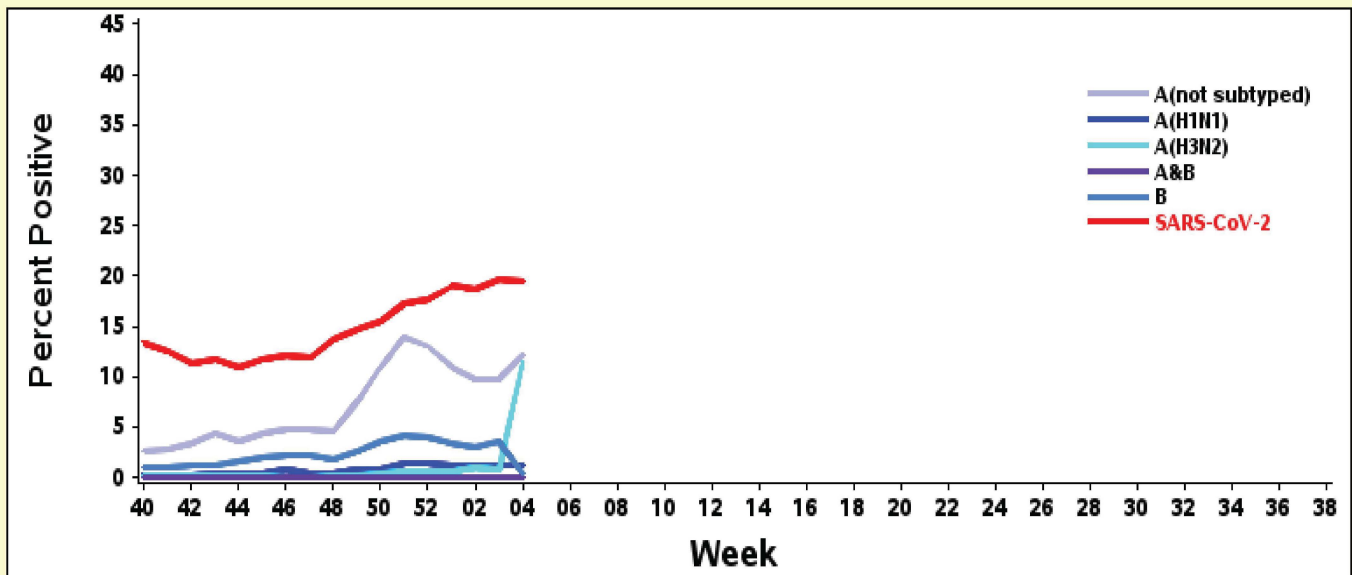


Number and Distribution of Influenza Positive Specimens and COVID-19 Cases since week 40, by Beneficiary Status

- COVID-19 cases predominated among all beneficiary categories, except among children, where influenza has predominated.



Percent of Specimens Positive for Influenza (by Serotype) or SARS-CoV-2



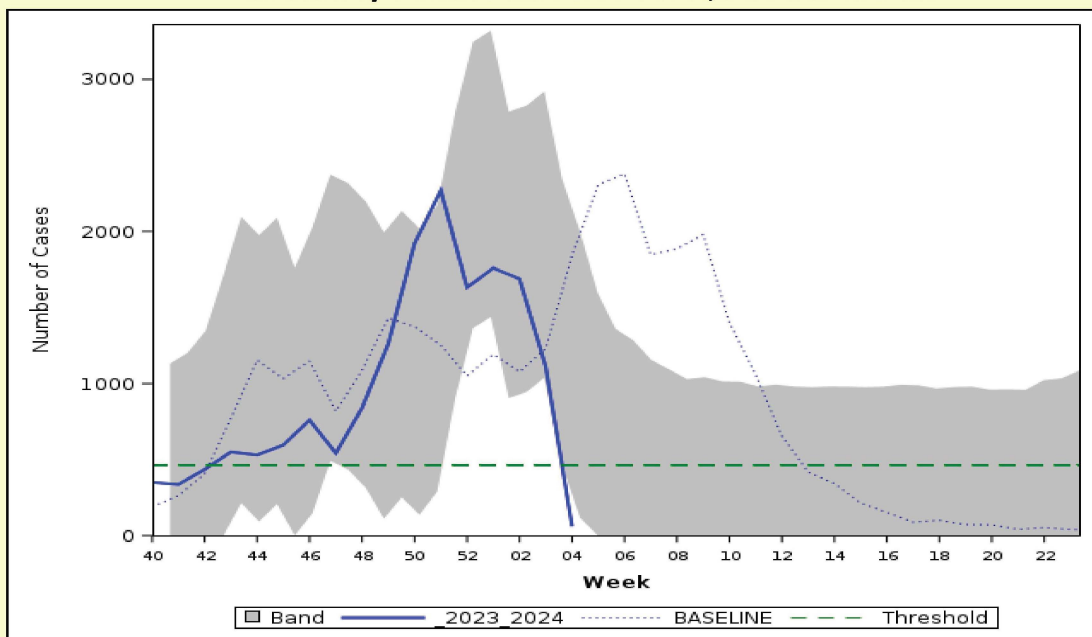
- The percent of specimens positive for SARS-CoV-2 remained stable from last week, but was still higher than the percent positive for influenza. The percent of specimens positive for Influenza A (H3N2) cases increased substantially from week 3.

Laboratory-Confirmed Influenza (2023-2024 Season: Week 4)

*Reporting of laboratory data from MHS GENESIS is typically delayed by 2 weeks

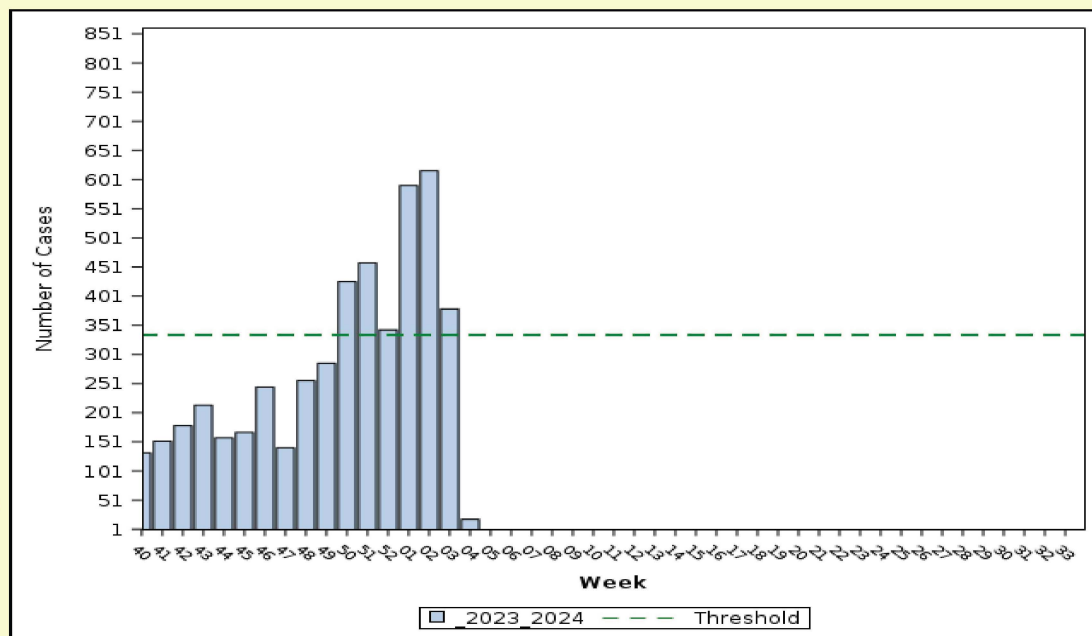
Laboratory-Positive Influenza Cases, All Beneficiaries

- The number of laboratory-confirmed influenza cases among all beneficiaries continued to decrease since week 2. However, this may be due to incomplete data for weeks 3 and 4.
- Band indicates one standard deviation above and below seasonal baseline estimates. Threshold indicates two standard deviations above off-season average.



Laboratory-Positive Influenza Cases, Active Component Service

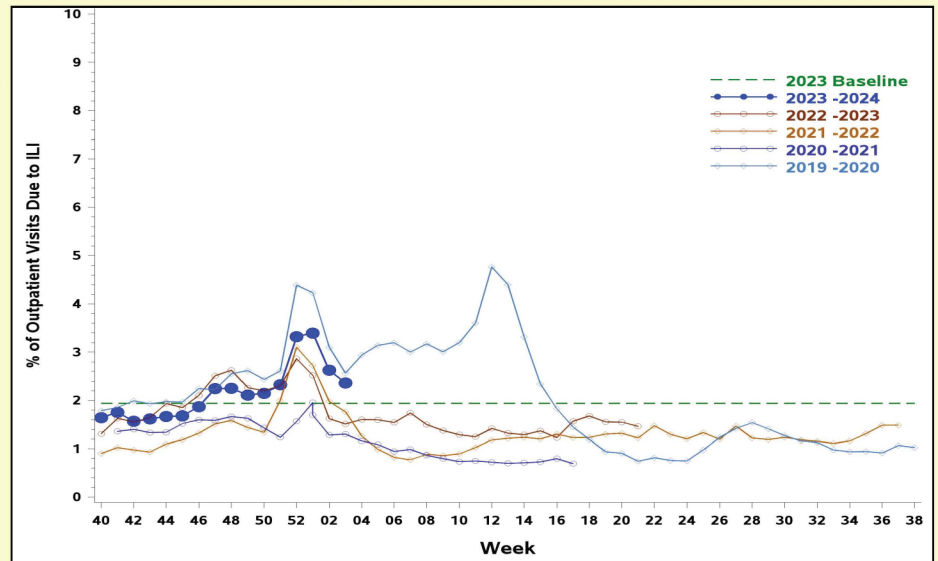
- The number of active component service member laboratory-confirmed influenza cases decrease from a season high during week 2. However, this may be due to incomplete data for weeks 3 and 4.
- Threshold indicates two standard deviations above seasonal baseline estimates.



ILI and Hospitalized Influenza (2023-2024 Season: Week 4)

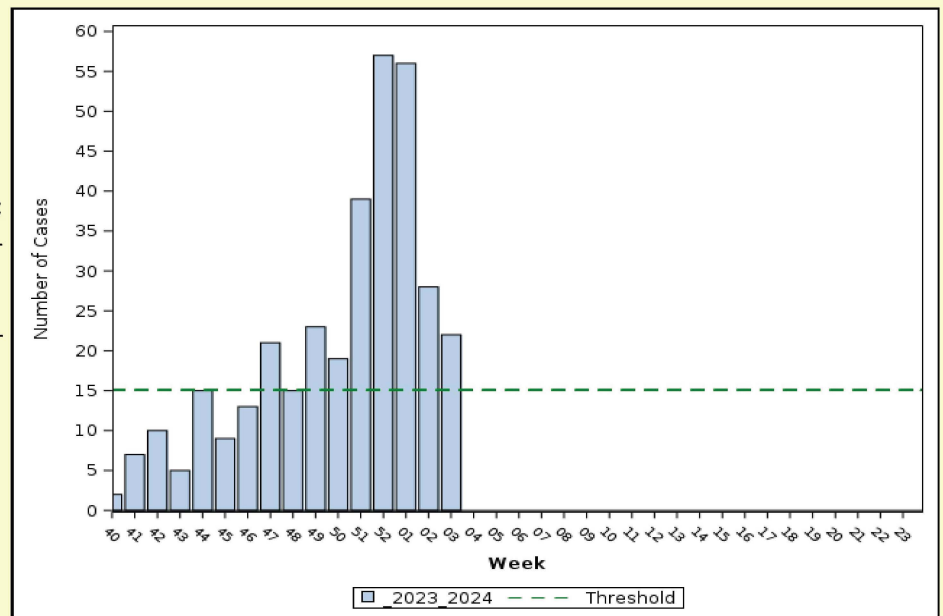
Percent of Outpatient Visits Due to ILI: Service Members, 2019-2020 to 2023-2024 Seasons

- The percentage of outpatient visits due to ILI for week 03 remained above baseline and higher than the previous 3 seasons.



Hospitalized Laboratory-Positive Influenza Cases, All Beneficiaries

- There were 22 new laboratory-confirmed influenza hospitalizations reported for week 03 (the last week with available data) (Season totals: 333; 37 service members and 296 other beneficiaries).
- Thresholds indicate one standard deviation above the overall weighted average during the season. However, there is not enough data for the season to calculate the threshold for the influenza-specific antiviral prescriptions metric.

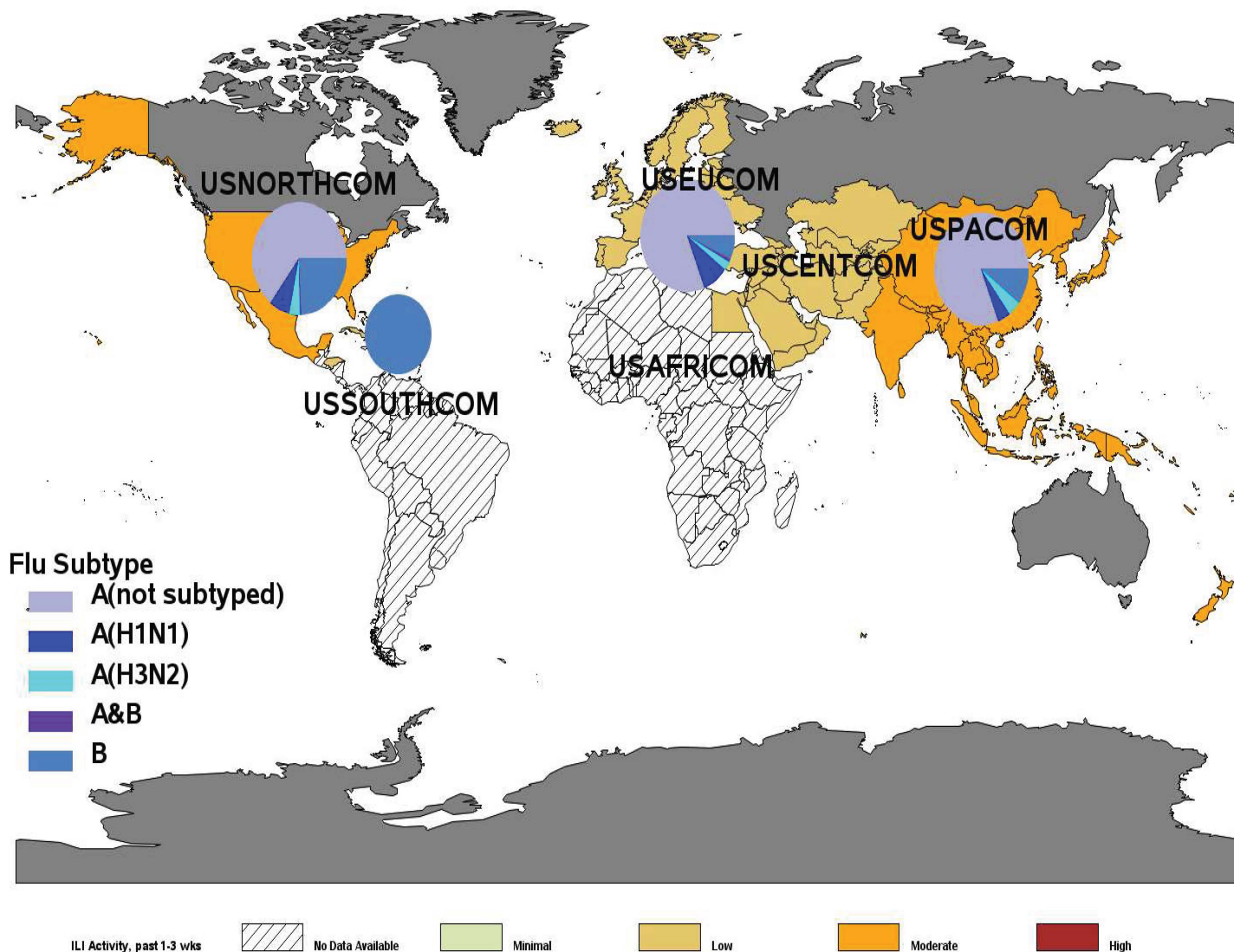


Influenza Activity: Geographic Combatant Command

(2023-2024 Season: Week 4)

- USNORTHCOM: ILI activity was moderate. The majority of laboratory-confirmed influenza cases have been influenza A (not subtyped) and influenza B.
- USEUCOM: ILI activity was low. The majority of laboratory-confirmed influenza cases have been influenza A (not subtyped) and A(H1N1).
- USINDOPACOM: ILI activity was moderate. The majority of laboratory-confirmed influenza cases have been influenza A (not subtyped) and influenza B.
- USSOUTHCOM: ILI activity was low. Two specimens have tested positive for influenza this season and both were influenza B.
- USCENTCOM: ILI activity was low.

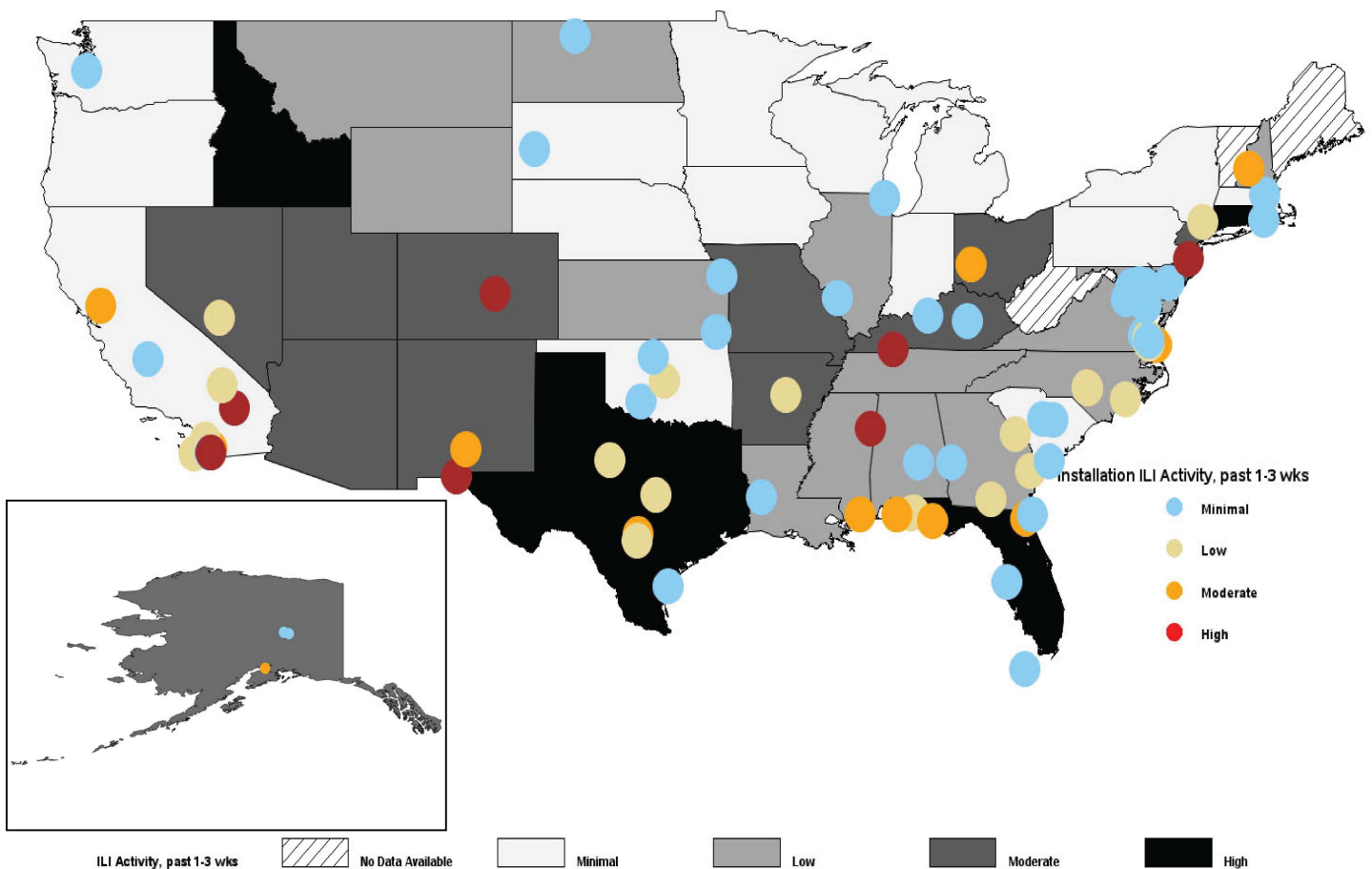
ILI Activity (Service Members) and Laboratory-Confirmed Influenza (All Beneficiaries)



Influenza Activity: USNORTHCOM (2023-2024 Season: Week 4)

- ILI activity, averaged over weeks 1-3, ranged from minimal to high depending on the installation.
- State level ILI activity, averaged over weeks 1-3, also ranged from minimal to high, with Idaho, Texas, Florida and Connecticut experiencing high activity.
- State level data includes both Military Treatment Facility (MTF) and outsourced care. Therefore, state activity levels may differ from the installation level data.
- Installation-level laboratory-confirmed influenza and COVID-19 case data can be found on pages 13-18 of the report.

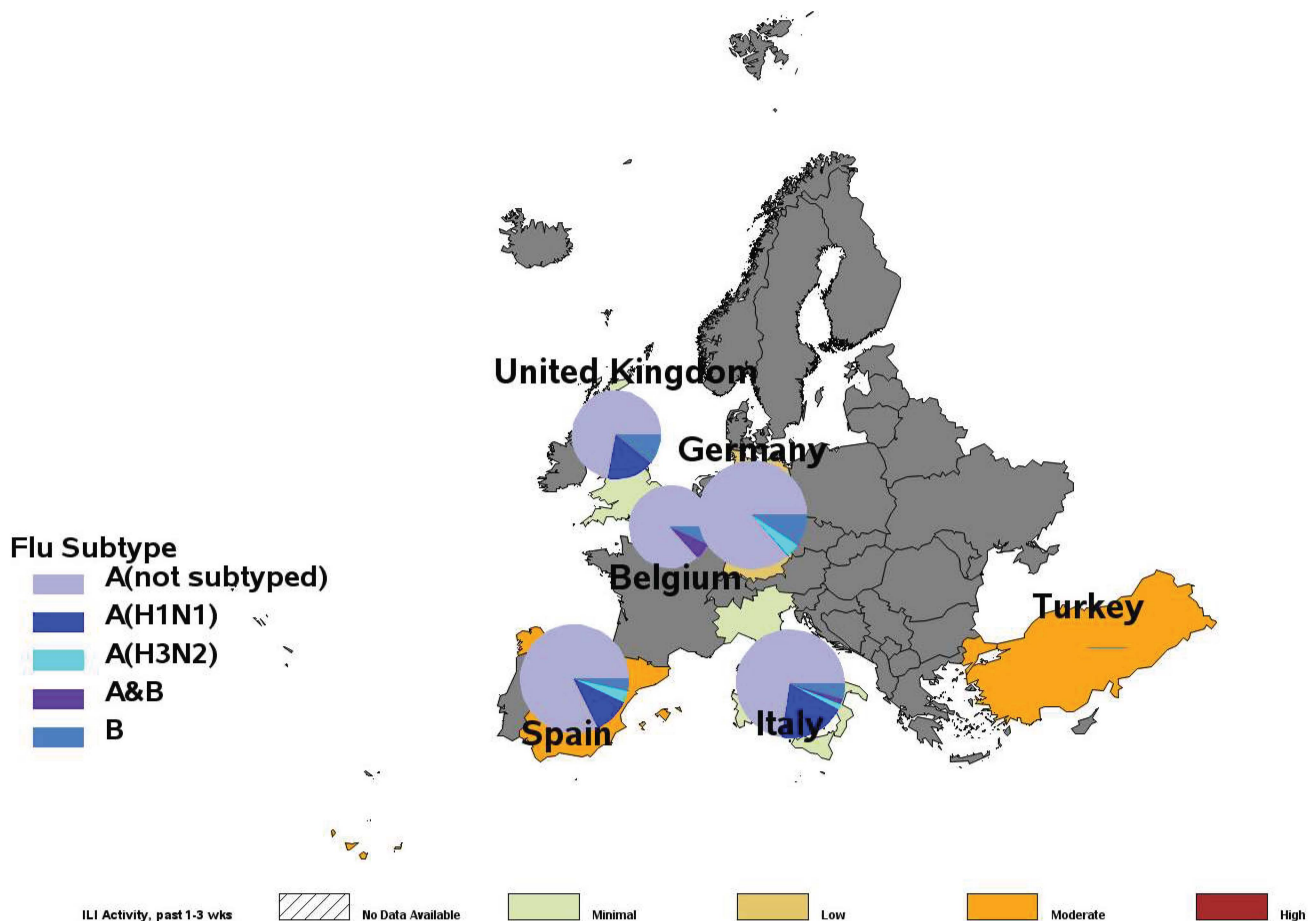
ILI Activity (Service Members) by State and Installation



Influenza and COVID-19 Activity: USEUCOM (2023-2024 Season: Week 4)

- ILI activity, averaged over weeks 1-3, ranged from minimal to moderate in EUCOM.
- The majority of laboratory-confirmed influenza cases for USEUCOM have been Influenza A (not subtyped). Among subtyped specimens, A(H1N1) has predominated.
- Installation-level laboratory-confirmed influenza and COVID-19 case data for USEUCOM can be found on page 8 of the report.

ILI Activity (Service Members) and Laboratory-Confirmed Influenza (All Beneficiaries)



*Locations colored in dark gray have no service member medical encounter data.

Confirmed Influenza and COVID-19: USEUCOM (2023-2024 Season: Week 4)

Laboratory-Confirmed Influenza by Installation (All Beneficiaries)

Country	Location	Service	A (not sub-typed)		A (H1N1)		A (H3N2)		A & B		B		Total positive	Total tested	% Positive	Change from past 2 weeks
			2 wks	Season	2 wks	Season	2 wks	Season	2 wks	Season	2 wks	Season	2 wks	2 wks	2 wks	
Belgium	Shape	A	5	13	0	0	0	0	0	1	0	0	5	13	38	+
Germany	Barton Barracks	A	0	0	0	0	0	0	0	0	0	0	0	0	0	=
Germany	Landstuhl RMC	A	12	51	0	0	0	0	0	0	0	2	12	95	13	+
Germany	Patch Barracks	A	0	0	0	0	0	0	0	0	0	0	0	0	0	=
Germany	Ramstein AB	F	4	4	0	0	0	0	0	0	0	0	4	14	29	+
Germany	Spangdahlem AB	F	0	0	0	0	0	3	0	0	0	0	0	0	0	=
Germany	USAG Bavaria	A	2	15	0	0	0	1	0	0	2	3	4	44	9	+
Germany	USAG Hohenfels/Amberg	A	0	2	0	0	0	0	0	0	0	0	0	2	0	=
Germany	USAG Kaiserslautern	A	1	3	0	0	0	0	0	0	1	1	2	6	33	-
Germany	USAG Katterbach	A	0	0	0	0	0	0	0	0	0	0	0	0	0	=
Germany	USAG Wiesbaden	A	0	0	0	0	0	0	0	0	0	1	0	0	0	=
Italy	Aviano AB	F	0	1	0	1	0	0	0	0	0	0	0	0	0	=
Italy	NAS Sigonella	N	1	4	1	12	0	1	0	0	0	1	2	14	14	+
Italy	NSA Naples	N	8	27	0	0	0	0	1	1	0	0	9	25	36	-
Italy	USAG Italy	A	3	16	0	0	0	0	0	0	1	2	4	52	8	-
Spain	NS Rota	N	18	46	0	6	0	2	0	0	0	2	18	65	28	+
Turkey	Incirlik AB	F	0	0	0	0	0	0	0	0	0	0	0	3	0	=
United Kingdom	RAF Alconbury	F	0	0	0	0	0	0	0	0	0	0	0	0	0	=
United Kingdom	RAF Croughton	F	0	0	0	0	0	0	0	0	0	0	0	0	0	=
United Kingdom	RAF Lakenheath	F	3	13	0	3	0	0	0	0	0	2	3	41	7	-

COVID-19 Cases Since Week 40 by Installation (All Beneficiaries)

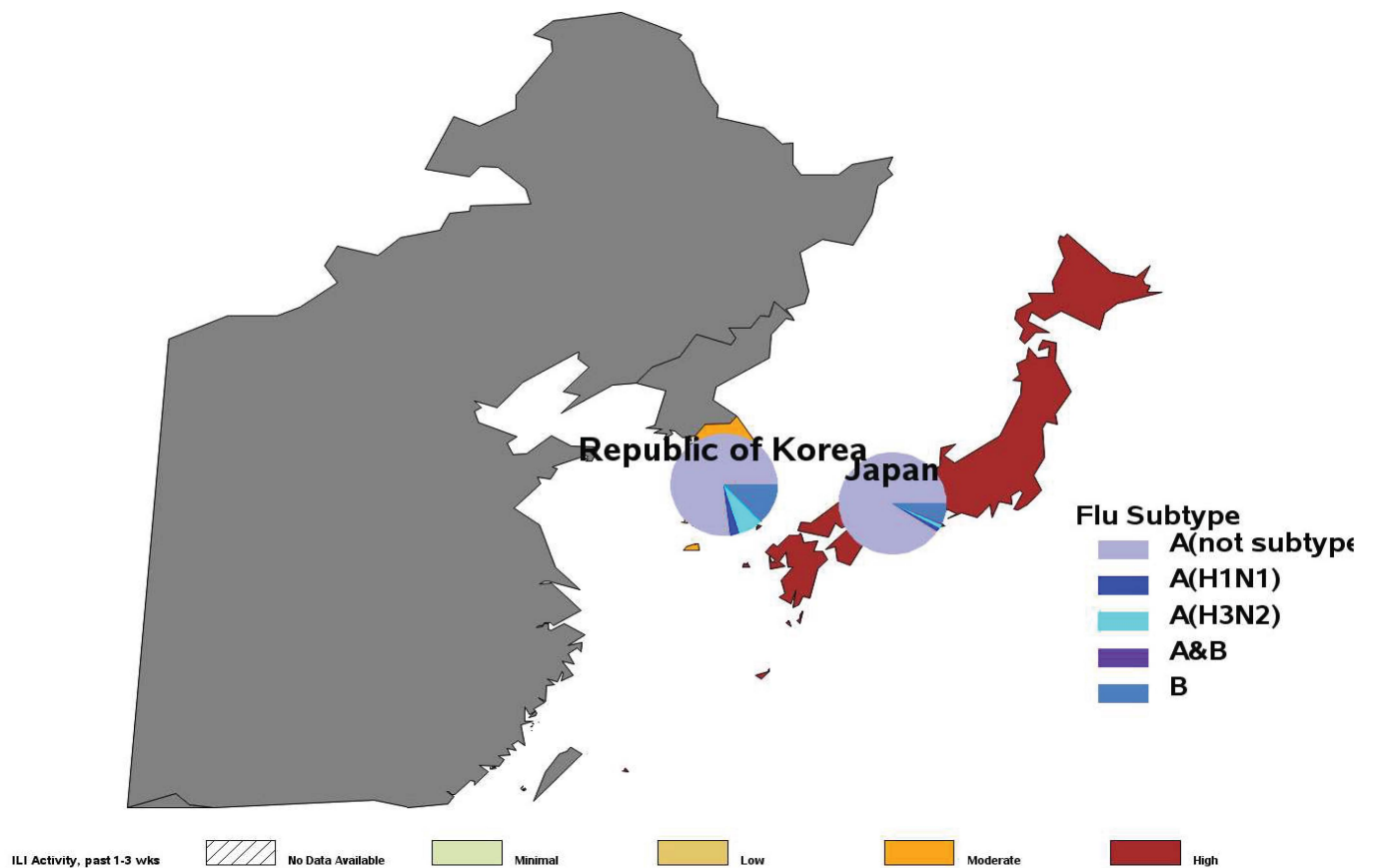
Country	Location	Service	COVID-19		Change from last report
			2 wks	Since week	
Belgium	Shape	A			=
Germany	Barton Barracks	A			=
Germany	Landstuhl RMC	A	26	418	-
Germany	Patch Barracks	A			=
Germany	Ramstein AB	F	2	18	-
Germany	Spangdahlem AB	F	2	25	-
Germany	USAG Bavaria	A	11	172	+
Germany	USAG Hohenfels/Amberg	A			=
Germany	USAG Kaiserslautern	A			=
Germany	USAG Katterbach	A			=
Germany	USAG Wiesbaden	A			=
Italy	Aviano AB	F		4	=
Italy	NAS Sigonella	N	9	141	-
Italy	NSA Naples	N	3	51	-
Italy	USAG Italy	A			=
Spain	NS Rota	N	2	38	-
Turkey	Incirlik AB	F	7	49	-
United Kingdom	RAF Alconbury	F			=
United Kingdom	RAF Croughton	F			=
United Kingdom	RAF Lakenheath	F	12	127	=

“2 wks” in the tables is defined as labs collected 7-21 days prior to the current week of the report. This delay is due to delays in receiving data from MHS GENESIS.

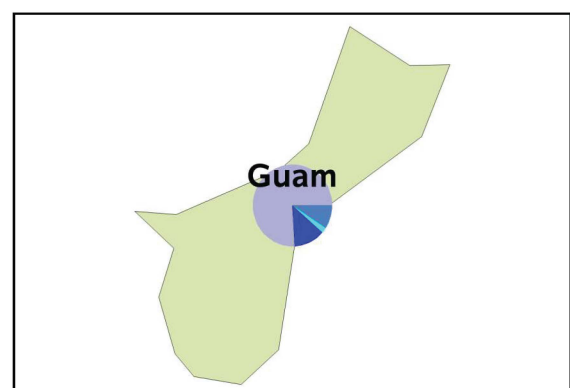
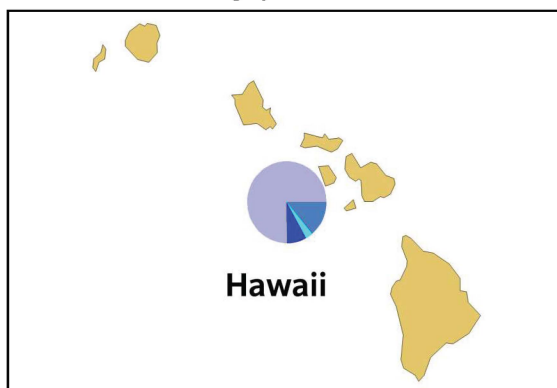
Influenza Activity: USINDOPACOM (2023-2024 Season: Week 4)

- ILI activity, averaged over weeks 1-3, was minimal to high in USINDOPACOM, depending on the country. High activity was seen in Japan.
- The majority of laboratory-confirmed influenza cases for USINDOPACOM have been Influenza A (not subtyped). Among sub-typed specimens, A(H3N2) has predominated.
- Installation-level laboratory-confirmed influenza and COVID-19 case data for USINDOPACOM can be found on page 10 of the report.

ILI Activity (Service Members) and Laboratory-Confirmed Influenza (All Beneficiaries)



*Locations colored in dark gray have no service member medical encounter data.



Influenza Activity: USINDOPACOM (2023-2024 Season: Week 4)

Laboratory-Confirmed Influenza by Installation (All Beneficiaries)

Country	Location	Service	A (not sub-typed)		A (H1N1)		A (H3N2)		A & B		B		Total positive	Total tested	% Positive	Change from last report
			2 wks	Season	2 wks	Season	2 wks	Season	2 wks	Season	2 wks	Season	2 wks	Season	2 wks	2 wks
Guam	JB Andersen	J	4	163	0	26	0	5	0	0	3	19	7	220	3	-
Japan	CFA Okinawa	N	3	19	0	0	0	0	0	0	0	0	3	35	9	-
Japan	CFA Yokosuka	N	5	41	0	1	0	1	0	0	0	1	5	30	17	+
Japan	Camp Foster	N	0	0	0	0	0	0	0	0	0	0	0	0	0	=
Japan	Camp Fuji	N	1	3	0	0	0	0	0	0	1	2	2	6	33	+
Japan	Camp Zama	A	3	7	0	0	0	0	0	0	0	0	3	23	13	-
Japan	Kadena AB	F	1	8	0	1	0	0	0	0	0	3	1	2	50	-
Japan	MCAS Futenma	N	0	0	0	0	0	0	0	0	0	0	0	0	0	=
Japan	MCAS Iwakuni	N	5	31	0	0	0	0	0	0	3	5	8	40	20	+
Japan	Misawa AB	F	3	17	1	2	0	2	0	0	1	1	5	23	22	-
Japan	NAF Atsugi	N	1	12	0	0	0	0	0	0	0	0	1	15	7	-
Japan	NB Okinawa	N	10	84	0	0	0	1	0	0	2	3	12	65	18	-
Japan	USFA Sasebo	N	0	15	0	0	0	0	0	1	0	2	0	7	0	=
Japan	Yokota AB	F	7	53	0	0	0	0	0	0	0	3	7	29	24	+
Korea, Republic of	CFA Chinhae	N	0	0	0	0	0	0	0	0	0	0	0	0	0	=
Korea, Republic of	Camp Casey	A	0	1	0	0	0	0	0	0	1	1	1	4	25	-
Korea, Republic of	Camp Humphreys	A	0	0	0	0	0	0	0	0	0	0	0	0	0	=
Korea, Republic of	Camp Walker	A	2	29	0	2	1	3	0	0	4	6	7	33	21	-
Korea, Republic of	Kunsan AB	F	3	19	0	0	0	0	0	0	2	2	5	29	17	-
Korea, Republic of	Osan AB	F	12	131	0	0	0	0	0	0	14	29	26	164	16	+
Korea, Republic of	Yongsan Garrison	A	9	173	2	12	2	34	0	0	5	12	18	90	20	=
United States	Camp H M Smith	N	1	2	0	0	0	0	0	0	0	0	1	1	100	-
United States	Ft Shafter	A	23	147	4	42	1	15	0	0	3	27	31	441	7	+
United States	JB Pearl Harbor-Hickam	J	3	24	1	1	0	2	0	0	4	10	8	61	13	+
United States	MCB Hawaii	N	2	44	0	0	0	0	0	0	3	6	5	77	6	+
United States	Schofield Barracks	A	44	285	2	10	0	4	0	1	4	48	50	554	9	-

COVID-19 Cases Since Week 40 by Installation (All Beneficiaries)

Country	Location	Service	COVID-19		Change from last report
			2 wks	Since week	
Guam	JB Andersen	J	36	168	-
Japan	CFA Okinawa	N		29	=
Japan	CFA Yokosuka	N	30	142	+
Japan	Camp Foster	N		1	=
Japan	Camp Fuji	N			=
Japan	Camp Zama	A	15	30	+
Japan	Kadena AB	F		7	=
Japan	MCAS Futenma	N			=
Japan	MCAS Iwakuni	N		4	=
Japan	Misawa AB	F	7	38	+
Japan	NAF Atsugi	N		10	=
Japan	NB Okinawa	N	23	116	-
Japan	USFA Sasebo	N		9	=
Japan	Yokota AB	F	4	23	-
Korea, Republic of	CFA Chinhae	N			=
Korea, Republic of	Camp Casey	A		7	=
Korea, Republic of	Camp Humphreys	A		2	=
Korea, Republic of	Camp Walker	A		4	=
Korea, Republic of	Kunsan AB	F	5	54	=
Korea, Republic of	Osan AB	F	42	246	+
Korea, Republic of	Yongsan Garrison	A	59	348	-
United States	Camp H M Smith	N			=
United States	Ft Shafter	A	158	903	-
United States	JB Pearl Harbor-Hickam	J	25	172	=
United States	MCB Hawaii	N			=
United States	Schofield Barracks	A			=

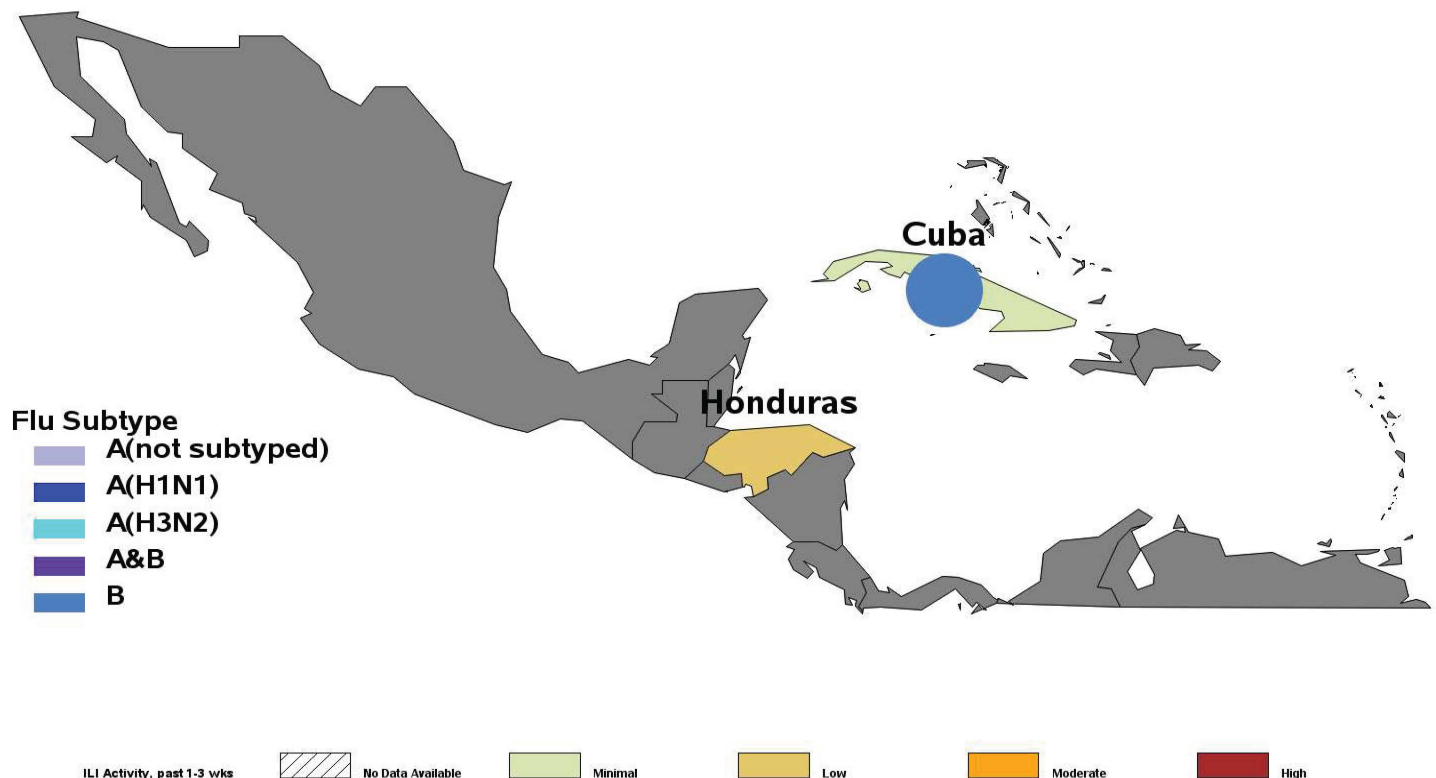
"2 wks" in the tables is defined as labs collected 7-21 days prior to the current week of the report.

This delay is due to delays in receiving data from MHS GENESIS.

Influenza Activity: USSOUTHCOM (2023-2024 Season: Week 4)

- ILI activity was low in Honduras and minimal in Cuba.
- Two laboratory-confirmed influenza cases have been reported in Cuba for the 2023-2024 season, both influenza B.

ILI Activity (Service Members) and Laboratory-Confirmed Influenza (All Beneficiaries)



*Locations colored in dark gray have no service member medical encounter data.

Laboratory-Confirmed Influenza by Installation (All Beneficiaries)

Country	Location	Service	A (not sub-typed)		A (H1N1)		A (H3N2)		A & B		B		Total posi-tive	Total tested	% Positive	Change from last report
			2 wks	Season	2 wks	Season	2 wks	Season	2 wks	Season	2 wks	Season	2 wks	2 wks	2 wks	
Cuba	Guantanamo Bay	N	0	0	0	0	0	0	0	0	0	2	0	1	0	=

COVID-19 Cases Since Week 40 by Installation (All Beneficiaries)

Country	Location	Service	COVID-19		Change from last report
			2 wks	Since week 40	
Cuba	Guantanamo Bay	N		16	=

"2 wks" in the tables is defined as labs collected 7-21 days prior to the current week of the report. This delay is due to delays in receiving data from MHS GENESIS.

Influenza Activity: USCENTCOM (2023-2024 Season: Week 4)

- ILI activity, averaged over week 1-3, was low to moderate, depending on the country.

ILI Activity (Service Members)



*Locations colored in dark gray have no service member medical encounter data.

USNORTHCOM Laboratory-Confirmed Influenza

(2023-2024 Season: Week 4)

Laboratory-Confirmed Influenza (All Beneficiaries) by Installation Alaska through Georgia

*Reporting of laboratory data from MHS GENESIS is typically delayed by 2 weeks

State	Location	Service	A (not subtyped)		A (H1N1)		A (H3N2)		A & B		B		Total positive	Total tested	% Posi-	Change from last report
			2 wks	Season	2 wks	Season	2 wks	Season	2 wks	Season	2 wks	Season	2 wks	2 wks	2 wks	
AK	Eielson AFB	F	6	14	0	0	0	0	0	0	0	0	6	30	20	-
AK	Ft Greely	A	0	1	0	0	0	0	0	0	0	0	0	1	0	=
AK	Ft Wainwright	A	8	289	0	0	0	0	0	1	4	5	12	162	7	=
AK	JB Elmendorf-Richardson	J	4	132	1	30	0	1	0	1	0	6	5	118	4	-
AL	Ft Rucker	A	9	42	0	0	0	0	0	0	0	17	9	46	20	-
AL	Maxwell AFB	F	12	54	0	0	0	0	0	0	2	26	14	65	22	+
AL	Redstone Arsenal	A	2	23	0	0	0	0	0	2	2	35	4	18	22	-
AR	Little Rock AFB	F	6	17	0	0	0	0	1	1	1	9	8	48	17	+
AZ	Davis-Monthan AFB	F	2	10	0	1	0	0	0	0	2	4	4	17	24	+
AZ	Ft Huachuca	A	9	12	0	0	0	0	0	0	1	1	10	37	27	+
AZ	Luke AFB	F	9	69	0	0	0	0	0	0	3	5	12	109	11	-
AZ	MCAS Yuma	N	0	1	0	0	0	0	0	0	2	5	2	15	13	-
CA	Beale AFB	F	0	2	0	0	0	0	0	0	1	1	1	17	6	+
CA	Camp Pendleton	N	66	350	0	2	0	2	0	0	9	38	75	672	11	-
CA	Edwards AFB	F	0	0	0	0	0	0	0	0	0	0	0	3	0	=
CA	Ft Irwin	A	16	114	0	0	0	0	0	0	4	9	20	167	12	-
CA	Los Angeles AFB	F	0	0	0	0	0	0	0	0	0	0	0	2	0	=
CA	NAH Lemoore	N	2	9	0	12	1	2	0	0	0	2	3	45	7	-
CA	NB Coronado	N	0	1	0	3	1	1	0	0	0	1	1	17	6	-
CA	NB San Diego	N	1	49	31	264	22	167	0	0	12	50	66	648	10	+
CA	NV Ventura County	N	1	2	0	0	0	0	0	0	1	1	2	6	33	-
CA	Travis AFB	F	23	93	0	0	0	0	0	0	0	8	23	210	11	+
CA	Twentynine Palms	N	4	37	0	0	0	0	0	0	1	7	5	101	5	-
CA	USAG Presidio of Monterey	A	1	1	0	0	0	0	0	0	0	0	1	6	17	+
CA	Vandenberg AFB	F	5	8	0	0	0	2	0	0	0	1	5	22	23	+
CO	Buckley AFB	F	5	36	0	0	0	0	0	0	2	10	7	48	15	+
CO	Ft Carson	A	94	526	0	0	0	1	3	7	48	196	145	693	21	=
CO	Peterson AFB	F	7	36	2	2	0	1	0	0	2	16	11	50	22	+
CO	Schriever AFB	F	1	3	0	0	0	0	0	0	0	1	1	2	50	-
CO	USAF Academy	F	5	31	0	0	0	1	0	0	5	15	10	47	21	=
CT	NSB New London	N	5	8	0	0	0	0	0	1	4	15	9	55	16	-
DC	JB Anacostia-Bolling	F	8	13	0	0	0	0	0	0	0	0	8	29	28	-
DC	Pentagon	J	17	45	0	0	0	0	0	0	1	2	18	86	21	+
DC	Washington Navy Yard	N	0	2	0	0	0	0	0	0	0	0	0	0	0	=
DE	Dover AFB	F	1	16	0	1	0	2	0	0	1	3	2	27	7	-
FL	Eglin AFB	J	17	108	1	1	0	0	0	0	8	40	26	130	20	=
FL	Hurlburt Field	F	1	27	0	0	0	0	0	0	1	10	2	27	7	-
FL	Macdill AFB	F	2	25	0	3	0	3	0	1	1	21	3	35	9	-
FL	NAS Jacksonville	J	23	136	0	0	0	0	0	5	16	164	39	202	19	+
FL	NAS Key West	J	0	1	0	0	0	0	0	0	1	9	1	2	50	-
FL	NAS Pensacola	N	22	115	0	0	0	0	0	0	10	58	32	289	11	=
FL	NAS Whiting Field	N	2	14	0	0	0	0	0	0	1	18	3	35	9	+
FL	NS Mayport	J	1	11	0	0	0	0	0	2	0	6	1	20	5	+
FL	Patrick AFB	F	7	19	0	0	0	0	0	0	1	16	8	51	16	+
FL	Tyndall AFB	F	4	22	0	0	0	0	0	0	3	27	7	58	12	-
GA	Ft Benning	A	18	86	0	0	0	0	0	2	9	66	27	200	14	+
GA	Ft Gordon	A	30	240	2	6	0	0	0	0	3	138	35	280	13	+
GA	Ft Stewart	A	26	104	0	3	0	0	0	1	3	62	29	140	21	-
GA	Hunter Army Airfield	A	0	14	0	0	0	0	0	0	0	11	0	22	0	=
GA	Moody AFB	F	0	9	0	1	0	1	0	0	0	4	0	8	0	=
GA	NAS Albany	J	0	2	0	0	0	0	0	0	1	4	1	3	33	+
GA	NSB Kings Bay	J	1	11	0	0	0	0	0	0	0	38	1	8	13	+
GA	Robins AFB	F	0	0	6	24	1	2	0	0	3	19	10	83	12	-

"2 wks" in the table is defined as labs collected 7-21 days prior to the current week of the report.
This delay is due to delays in receiving data from MHS GENESIS.

USNORTHCOM COVID-19 Cases

(2023-2024 Season: Week 4)

COVID-19 Cases Since Week 40 (All Beneficiaries) by Installation Alaska through Georgia

*Reporting of laboratory data from MHS GENESIS is typically delayed by 2 weeks

State	Location	Service	COVID-19		Change from last report
			2 wks	Since week 41	
AK	Eielson AFB	F	6	30	-
AK	Ft Wainwright	A	41	190	+
AK	JB Elmendorf-Richardson	J	35	181	=
AL	Ft Rucker	A	11	30	+
AL	Maxwell AFB	F	19	124	+
AL	Redstone Arsenal	A	3	63	-
AR	Little Rock AFB	F	6	50	-
AZ	Davis-Monthan AFB	F	9	121	-
AZ	Ft Huachuca	A	7	32	+
AZ	Luke AFB	F	25	229	-
CA	Beale AFB	F	2	26	+
CA	Camp Pendleton	N	117	784	-
CA	Edwards AFB	F	1	7	=
CA	Ft Irwin	A	35	200	-
CA	NAH Lemoore	N	10	60	=
CA	NB San Diego	N	79	662	-
CA	Travis AFB	F	28	210	-
CA	Twentynine Palms	N	43	212	-
CA	USAG Presidio of Monterey	A	2	3	=
CA	Vandenberg AFB	F	3	33	=
CO	Buckley AFB	F	14	84	+
CO	Ft Carson	A	87	915	-
CO	Peterson AFB	F	4	52	+
CO	USAF Academy	F	17	236	+
CT	NSB New London	N	0	1	=
DE	Dover AFB	F	12	83	+
FL	Eglin AFB	J	27	186	-
FL	Hurlburt Field	F	8	38	+
FL	Macdill AFB	F	8	46	=
FL	NAS Jacksonville	J	68	316	+
FL	NAS Pensacola	N	102	373	+
FL	NS Mayport	J	0	1	=
FL	Patrick AFB	F	6	19	-
FL	Tyndall AFB	F	10	54	=
GA	Ft Benning	A	114	281	+
GA	Ft Gordon	A	71	423	-
GA	Ft Stewart	A	42	178	+
GA	Hunter Army Airfield	A	2	9	+
GA	Moody AFB	F	3	27	=
GA	NSB Kings Bay	J	1	2	=
GA	Robins AFB	F	15	103	-

“2 wks” in the table is defined as labs collected 7-21 days prior to the current week of the report. This delay is due to delays in receiving data from MHS GENESIS.

USNORTHCOM Laboratory-Confirmed Influenza

(2023-2024 Season: Week 4)

Laboratory-Confirmed Influenza (All Beneficiaries) by Installation Idaho through New York

*Reporting of laboratory data from MHS GENESIS is typically delayed by 2 weeks

State	Location	Service	A (not subtyped)		A (H1N1)		A (H3N2)		A & B		B		Total positive	Total tested	% Positive	Change from last report
			2 wks	Season	2 wks	Season	2 wks	Season	2 wks	Season	2 wks	Season	2 wks	2 wks	2 wks	
ID	Mountain Home AFB	F	0	1	0	1	0	0	0	0	0	0	0	0	0	=
IL	NS Great Lakes	N	44	162	9	101	97	211	0	0	1	18	151	589	26	-
IL	Rock Island Arsenal	A	0	3	0	0	0	0	0	0	0	5	0	0	0	=
IL	Scott AFB	F	0	1	2	6	2	3	0	0	1	1	5	41	12	+
KS	Ft Leavenworth	A	0	16	0	0	0	0	0	0	2	6	2	23	9	+
KS	Ft Riley	A	7	58	0	4	0	1	0	1	4	11	11	94	12	-
KS	McConnell AFB	F	3	13	0	2	0	0	0	0	0	2	3	41	7	+
KY	Ft Campbell	A	44	157	0	0	0	0	0	4	37	272	81	305	27	-
KY	Ft Knox	A	10	25	0	0	0	0	2	7	14	69	26	92	28	+
LA	Barksdale AFB	F	2	15	0	2	0	1	0	0	1	28	3	25	12	-
LA	Ft Polk	A	12	70	0	0	0	0	0	0	2	47	14	99	14	-
LA	NAS Belle Chase	N	1	4	0	0	0	0	0	1	2	12	3	11	27	+
MA	Hanscom AFB	F	1	4	0	5	0	0	0	0	1	4	2	9	22	+
MD	Aberdeen Proving Ground	A	2	13	0	0	0	0	0	0	0	2	2	18	11	-
MD	Ft Detrick	A	5	27	0	0	0	0	0	0	1	3	6	23	26	-
MD	Ft Meade	A	8	33	0	0	0	0	0	0	0	3	8	70	11	-
MD	JB Andrews	F	17	92	0	4	0	4	0	0	0	4	17	102	17	+
MD	NAS Patuxent River	N	2	7	0	0	0	0	0	0	0	0	2	31	6	-
MD	NHC Annapolis	N	9	15	0	0	0	1	0	0	1	3	10	41	24	+
MD	NSF Indian Head	N	0	3	0	0	0	0	0	0	0	2	0	3	0	=
MD	WRNMMC	J	14	156	2	34	2	3	0	0	4	18	22	274	8	+
MO	Ft Leonard Wood	A	30	157	0	0	0	0	0	1	7	59	37	258	14	+
MO	Whiteman AFB	F	2	23	2	5	0	4	0	0	2	14	6	57	11	-
MS	Columbus AFB	F	0	4	0	0	0	0	0	0	1	10	1	3	33	-
MS	Keesler AFB	J	6	74	1	10	0	0	0	0	4	33	11	141	8	+
MS	NAS Meridian	N	2	6	0	0	0	0	0	0	1	6	3	17	18	+
MS	NBHC Gulfport	N	0	4	0	0	0	0	0	0	5	13	5	16	31	+
MT	Malmstrom AFB	F	12	77	0	0	0	0	0	0	0	0	12	63	19	-
NC	Camp Lejeune	N	45	190	0	8	0	0	0	0	28	83	73	276	26	+
NC	Ft Bragg	J	57	598	2	27	0	3	1	5	34	375	94	784	12	-
NC	MCAS Cherry Point	N	3	14	0	2	1	1	0	0	2	14	6	41	15	+
NC	Seymour Johnson AFB	J	0	15	0	5	1	1	0	1	2	19	3	33	9	-
ND	Grand Forks AFB	F	8	21	0	0	0	0	0	0	0	0	8	41	20	+
ND	Minot AFB	F	0	5	0	6	0	0	0	0	0	0	0	0	0	=
NE	Offutt AFB	F	0	1	0	1	0	1	0	0	0	0	0	1	0	=
NH	Portsmouth	N	4	6	0	0	0	0	0	0	1	2	5	11	45	-
NJ	JB McGuire-Dix-Lakehurst	F	2	25	0	1	0	0	0	0	2	7	4	57	7	+
NM	Cannon AFB	F	4	13	0	0	0	0	0	0	0	5	4	19	21	+
NM	Holloman AFB	F	7	17	0	0	0	0	0	0	1	1	8	56	14	+
NM	Kirtland AFB	F	6	22	0	0	0	0	0	0	0	1	6	48	13	-
NM	White Sands Missile Range	A	0	6	0	0	0	0	0	0	1	1	1	4	25	-
NV	Nellis AFB	F	24	163	4	58	1	5	0	0	10	45	39	219	18	-
NY	Ft Drum	A	2	7	1	1	0	0	0	0	0	4	3	29	10	-
NY	West Point	A	7	31	0	0	0	0	0	0	1	4	8	34	24	-

“2 wks” in the table is defined as labs collected 7-21 days prior to the current week of the report.
This delay is due to delays in receiving data from MHS GENESIS.

USNORTHCOM COVID-19 Cases

(2023-2024 Season: Week 4)

COVID-19 Cases Since Week 40 (All Beneficiaries) by Installation Idaho through New York

*Reporting of laboratory data from MHS GENESIS is typically delayed by 2 weeks

State	Location	Service	COVID-19		Change from last report
			2 wks	Since week	
ID	Mountain Home AFB	F	0	61	=
IL	NS Great Lakes	N	101	661	+
IL	Scott AFB	F	12	77	+
KS	Ft Leavenworth	A	18	70	+
KS	Ft Riley	A	27	238	+
KS	McConnell AFB	F	12	87	+
KY	Ft Campbell	A	42	327	-
KY	Ft Knox	A	9	87	-
LA	Barksdale AFB	F	1	83	-
LA	Ft Polk	A	28	106	+
MA	Hanscom AFB	F	3	12	+
MD	Ft Meade	A	16	167	-
MD	JB Andrews	F	27	228	+
MD	NAS Patuxent River	N	6	28	=
MD	NHC Annapolis	N	6	31	-
MD	WRNMMC	J	42	425	-
MO	Ft Leonard Wood	A	43	362	-
MO	Whiteman AFB	F	13	93	-
MS	Columbus AFB	F	1	13	=
MS	Keesler AFB	J	56	232	+
MT	Malmstrom AFB	F	8	127	-
NC	Camp Lejeune	N	192	780	+
NC	Ft Bragg	J	250	1164	+
NC	MCAS Cherry Point	N	16	71	+
NC	Seymour Johnson AFB	J	7	51	=
ND	Grand Forks AFB	F	12	79	-
ND	Minot AFB	F	2	117	-
NE	Offutt AFB	F	1	9	=
NJ	JB McGuire-Dix-Lakehurst	F	10	117	-
NM	Cannon AFB	F	3	11	+
NM	Holloman AFB	F	7	39	-
NM	Kirtland AFB	F	5	91	=
NV	Nellis AFB	F	33	347	+
NY	Ft Drum	A	11	62	+
NY	West Point	A	3	25	-

“2 wks” in the table is defined as labs collected 7-21 days prior to the current week of the report. This delay is due to delays in receiving data from MHS GENESIS.

USNORTHCOM Laboratory-Confirmed Influenza

(2023-2024 Season: Week 4)

Laboratory-Confirmed Influenza (All Beneficiaries) by Installation Ohio through Wyoming

*Reporting of laboratory data from MHS GENESIS is typically delayed by 2 weeks

State	Location	Service	A (not subtyped)		A (H1N1)		A (H3N2)		A & B		B		Total positive	Total tested	% Positive	Change from last report
			2 wks	Season	2 wks	Season	2 wks	Season	2 wks	Season	2 wks	Season	2 wks	2 wks	2 wks	
OH	Wright-Patterson AFB	F	15	65	3	4	0	1	0	0	4	11	22	224	10	+
OK	Altus AFB	F	6	13	0	0	0	1	0	0	1	22	7	72	10	-
OK	Ft Sill	A	32	87	0	0	0	0	0	1	6	32	38	129	29	+
OK	Tinker AFB	F	4	9	0	1	0	0	0	0	2	12	6	46	13	+
OK	Vance AFB	F	0	4	0	0	0	0	0	0	2	9	2	14	14	-
PA	Carlisle Barracks	A	0	2	0	0	0	0	0	0	0	0	0	0	0	=
PR	Ft Buchanan	A	0	11	0	0	0	0	0	0	1	11	1	26	4	-
RI	NHC New England	N	3	10	0	1	0	0	0	0	0	2	3	13	23	+
SC	Ft Jackson	A	25	116	0	0	0	0	0	3	5	52	30	139	22	+
SC	JB Charleston	J	8	68	0	3	0	0	0	0	1	18	9	110	8	-
SC	MCAS Beaufort	N	2	20	0	1	0	0	0	0	0	5	2	106	2	-
SC	Parris Island	N	3	84	0	0	0	0	0	2	0	36	3	51	6	=
SC	Shaw AFB	F	9	37	0	0	0	1	0	0	1	16	10	91	11	-
SD	Ellsworth AFB	F	0	12	0	0	0	0	0	0	0	2	0	48	0	=
TN	Ft Campbell	A	2	22	0	0	0	0	0	5	10	71	12	46	26	+
TN	NSA Mid-South	N	3	17	0	0	0	0	0	0	3	20	6	17	35	-
TX	Dyess AFB	F	6	18	0	0	0	0	0	1	0	17	6	60	10	+
TX	Ft Bliss	A	96	696	68	122	16	30	0	2	26	56	206	781	26	-
TX	Ft Hood	A	93	802	2	20	0	1	0	2	20	101	115	795	14	-
TX	Goodfellow AFB	F	1	7	0	0	0	0	0	0	2	6	3	59	5	+
TX	JB San Antonio	J	198	790	21	98	5	13	1	3	49	319	274	1445	19	+
TX	Laughlin AFB	F	1	5	0	0	0	0	0	0	0	2	1	12	8	-
TX	NAS Corpus Christi	N	1	4	0	0	0	0	0	0	2	7	3	30	10	-
TX	NAS JRB Fort Worth	N	0	0	0	0	0	0	0	0	0	0	0	0	0	=
TX	NAS Kingsville	N	0	0	0	0	0	0	0	0	1	1	1	6	17	+
TX	Sheppard AFB	F	2	6	1	1	0	0	0	0	0	5	3	40	8	+
UT	Hill AFB	F	5	13	0	1	0	0	0	0	3	9	8	24	33	=
VA	Ft Belvoir	J	67	570	0	3	0	0	1	11	22	125	90	589	15	+
VA	Ft Lee	A	8	71	0	0	0	0	0	0	9	19	17	111	15	-
VA	JB Langley-Eustis	J	47	173	3	3	1	3	1	2	12	45	64	418	15	-
VA	JB Little Creek-Ft Story	J	0	0	2	7	0	0	0	0	0	1	2	6	33	-
VA	JB Myer-Henderson Hall	A	2	15	0	0	0	0	0	0	0	1	2	17	12	+
VA	MCB Quantico	N	3	24	0	0	0	0	0	0	0	1	3	23	13	-
VA	NAS Oceana	N	0	0	1	3	0	0	0	0	0	0	1	8	13	+
VA	NB Dam Neck	N	0	0	1	2	0	0	0	0	0	0	1	1	100	-
VA	NS Norfolk	N	0	2	0	4	1	2	0	0	0	1	1	10	10	+
VA	NWS Dahlgren	N	0	0	0	0	0	0	0	0	0	0	0	0	0	=
VA	NWS Yorktown	N	0	0	0	0	0	0	0	0	0	0	0	1	0	=
VA	Portsmouth	N	6	53	22	46	7	12	1	3	5	14	41	179	23	+
VA	TPC Suffolk	N	0	1	0	0	0	0	0	0	0	0	0	0	0	=
WY	FE Warren AFB	F	5	25	1	1	0	0	0	0	4	42	10	45	22	+

"2 wks" in the table is defined as labs collected 7-21 days prior to the current week of the report.
This delay is due to delays in receiving data from MHS GENESIS.

USNORTHCOM COVID-19 Cases

(2024-2024 Season: Week 4)

COVID-19 Cases Since Week 40 (All Beneficiaries) by Installation Ohio through Wyoming

*Reporting of laboratory data from MHS GENESIS is typically delayed by 2 weeks

State	Location	Service	COVID-19		Change from last report
			2 wks	Since week 41	
OH	Wright-Patterson AFB	F	26	300	-
OK	Altus AFB	F	6	63	-
OK	Ft Sill	A	63	293	+
OK	Tinker AFB	F	8	61	-
OK	Vance AFB	F	3	18	-
PR	Ft Buchanan	A	4	33	-
RI	NHC New England	N	13	106	-
SC	Ft Jackson	A	75	340	+
SC	JB Charleston	J	26	153	+
SC	MCAS Beaufort	N	65	187	+
SC	Shaw AFB	F	9	71	-
SD	Ellsworth AFB	F	8	125	-
TX	Dyess AFB	F	4	77	-
TX	Ft Bliss	A	131	657	+
TX	Ft Hood	A	195	1055	+
TX	Goodfellow AFB	F	9	43	+
TX	JB San Antonio	J	380	1899	+
TX	Laughlin AFB	F	7	11	+
TX	NAS Corpus Christi	N	8	45	-
TX	Sheppard AFB	F	9	56	=
UT	Hill AFB	F	6	43	=
VA	Ft Belvoir	J	80	664	-
VA	Ft Lee	A	38	128	+
VA	JB Langley-Eustis	J	84	536	-
VA	MCB Quantico	N	19	59	+
VA	Portsmouth	N	49	217	+
WY	FE Warren AFB	F	8	108	-

"2 wks" in the table is defined as labs collected 7-21 days prior to the current week of the report. This delay is due to delays in receiving data from MHS GENESIS.

Surveillance Programs and Data Sources

Defense Health Agency / Armed Forces Health Surveillance Division (AFHSD):

The Armed Forces Health Surveillance Division (AFHSD) is the central epidemiologic resource for the U.S. Armed Forces, conducting medical surveillance to protect those who serve our nation in uniform and allies who are critical to our national security interests. The Epidemiology and Analysis Section of AFHSD, the Epi Data Center of the Defense Centers for Public Health—Portsmouth (DCPH-P), and the Defense Centers of Public Health—Dayton (DCPH-D) have compiled data for this report from the following sources below.

Influenza-like Illness Activity:

Medical encounter and demographic data from the AFHSD's Defense Medical Surveillance System (DMSS) are used to generate portions of this report. ICD-10 codes from outpatient encounters are used to identify influenza-like illness (ILI). ILI is defined using the following codes: B97.89, H66.9, H66.90, H66.91, H66.92, H66.93, J00, J01.9, J01.90, J06.9, J09, J09.X, J09.X1, J09.X2, J09.X3, J09.X9, J10, J10.0, J10.00, J10.01, J10.08, J10.1, J10.2, J10.8, J10.81, J10.82, J10.83, J10.89, J11, J11.0, J11.00, J11.08, J11.1, J11.2, J11.8, J11.81, J11.82, J11.83, J11.89, J12.89, J12.9, J18, J18.1, J18.8, J18.9, J20.9, J40, R05, R50.9.

The percentage of all outpatient visits that have an ILI code is calculated each week for all service members, regardless of component. These data are presented weekly for the current season and compared to the four prior seasons among service members. Due to delays in receiving the MHS GENESIS encounter data, the most recent data that can be presented is the 7-21 days prior to the reporting week. Influenza activity levels are calculated by comparing the mean reported percent of visits due to ILI for the previous 7-21 days to the mean reported percent of visits due to ILI during baseline weeks (defined as non-influenza weeks (weeks 22-39) over the past 3 years). Since the 2020-2021 and 2021-2022 influenza seasons were significantly reduced due to COVID-19 mitigation efforts, these seasons were excluded from the baseline calculations. The baseline weeks for the 2023-2024 report are from the years 2019, 2020, and 2023. There are four influenza activity levels, minimal, low, moderate, and high. The activity level corresponds to the number of standard deviations (SD) below, at or above the mean for the previous 7-21 day period compared to the mean of the baseline weeks. Minimal activity corresponds to an influenza percentage that is less than 2 SD above the mean. Low activity corresponds to an influenza percentage that is equal to or greater than 2 SD above the mean, but less than 4 SD above the mean. Moderate activity corresponds to an influenza percentage that is equal to or greater than 4 SD above the mean, but less than 6 SD above the mean. High activity corresponds to an influenza percentage that is equal to or greater than 6 SD above the mean.

Influenza activity levels are presented in the Geographic Combatant Command (GCC) maps, either by Installation, state, or country.

Influenza Positive Specimens:

Influenza lab results (HL-7 formatted data) are compiled and transmitted from the DCPH-P to AFHSD. Results obtained via PCR, viral culture, and rapid influenza assays are reported. Although the inclusion of rapid tests may underestimate the weekly and cumulative percent positive estimates due to false negatives, visibility of the positive rapid results provides valuable information for this surveillance report. Influenza types/subtypes are categorized as influenza A/not subtyped, influenza A(H1N1), influenza A(H3N2), influenza A and B co-infection, and influenza B. Additionally, laboratory-confirmed positive results are used to identify influenza-related hospitalization cases across the DoD.

The percent positivity is calculated by dividing the number of influenza positive specimens by the total number of specimens (positive and negative only; inconclusive results are excluded). The distributions of percent positive specimens by subtype are presented on a weekly basis for the entire influenza season. Due to delays in receiving the MHS GENESIS laboratory data, the most recent data that can be presented is the 7-21 days prior to reporting week. The distribution of subtypes for the previous 7-21 days are presented as pie graphs for states and countries. For installations, data are presented in tables with counts and percent positive by subtype for the previous 7-21 days and for the entire season. The "change from past 7-21 days" column reports the absolute difference in the percent positive from the prior week's report to the current week's report.

Surveillance Programs and Data Sources

COVID-19 Cases:

COVID-19 case data are compiled from the COVID-19 positive lab results (HL-7 formatted data) and cases reported in the DRSi. Due to delays in receiving the MHS GENESIS lab data, the most recent data that can be presented is the 7-21 days prior to reporting week. The percent positivity calculation is restricted to only COVID-19 cases reported through the lab data so that an accurate denominator can be obtained. The percent positivity is calculated by dividing the number of COVID-19 positive specimens by the total number of specimens tested for COVID-19. For installations, COVID-19 case data are presented in tables with case counts for the previous 7-21 days and for the entire influenza season (Week 40 to current). The “change from past 7-21 days” column reports the absolute difference in the number of COVID-19 case counts from the prior week’s report to the current week’s report.

Pharmacy Transactions for Dispensed Influenza Antiviral Prescriptions:

HL7-formatted pharmacy transactions are used to assess the number of dispensed influenza antiviral (AV) prescriptions. Four influenza AV medications approved by the Food and Drug Administration (FDA) are recommended by the CDC for use in the United States (US) for the 2023-2024 influenza season: oral oseltamivir (Tamiflu® or generic), inhaled zanamivir (Relenza®), and intravenous peramivir (Rapivab®), and baloxavir marboxil (Xofluz®). These prescriptions are included in this surveillance. The overall count of dispensed AV prescriptions by week is presented graphically for the influenza season. A seasonal baseline is displayed with dispensed AV prescriptions. Surveillance thresholds are displayed with the count of inpatient dispensed AV prescriptions. Additionally, counts of inpatient dispensed influenza AV prescriptions are presented weekly for the influenza season.

Influenza Baselines, Thresholds, and Trends:

Weekly baselines used a three-year average to compare results with those from the same week during the previous three seasons. Since the 2020-2021 and 2021-2022 influenza seasons were significantly reduced due to COVID-19 mitigation efforts, these seasons were excluded from the baseline calculations. The baseline calculations used the 2018-2019, 2019-2020, and 2022-2023 season data. Bands for one and two standard deviations above seasonal baseline estimates are displayed to indicate when trends diverge with respect to timing or volume from those of recent seasons. The ILI, lab, and dispensed AV prescription data thresholds are calculated by adding two standard deviations to the off-season average.

Inpatient thresholds (lab and dispensed AV prescription data) are calculated by adding one standard deviation to the overall weighted average for in-season weeks. Weeks that represent at least 2% of the total season’s laboratory-positive influenza cases for at least two consecutive weeks was considered to be “in-season” or influenza weeks; all other weeks are considered to be “off-season” or non-influenza weeks.

Links to Service-Specific Influenza Reports:

Select the following links to see service-specific influenza surveillance weekly reports:

- Defense Centers for Public Health—Portsmouth (DCPH-P):
<https://www.med.navy.mil/Navy-Marine-Corps-Public-Health-Center/Population-Health/Epi-Data-Center/Diseases-Conditions-and-Infections/Influenza/>
- Defense Centers for Public Health—Dayton (DCPH-D):
To access the Air Force weekly influenza reports, an AFNet account is required. Anyone with a CAC can request access to AFNet at: <https://epi.afds.af.mil/nonaf>